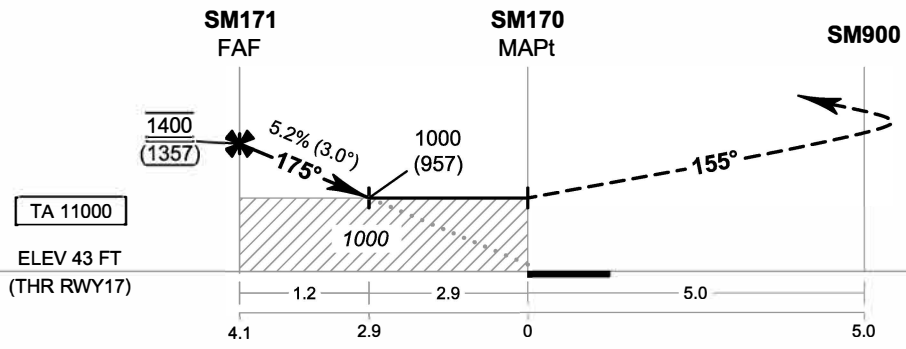
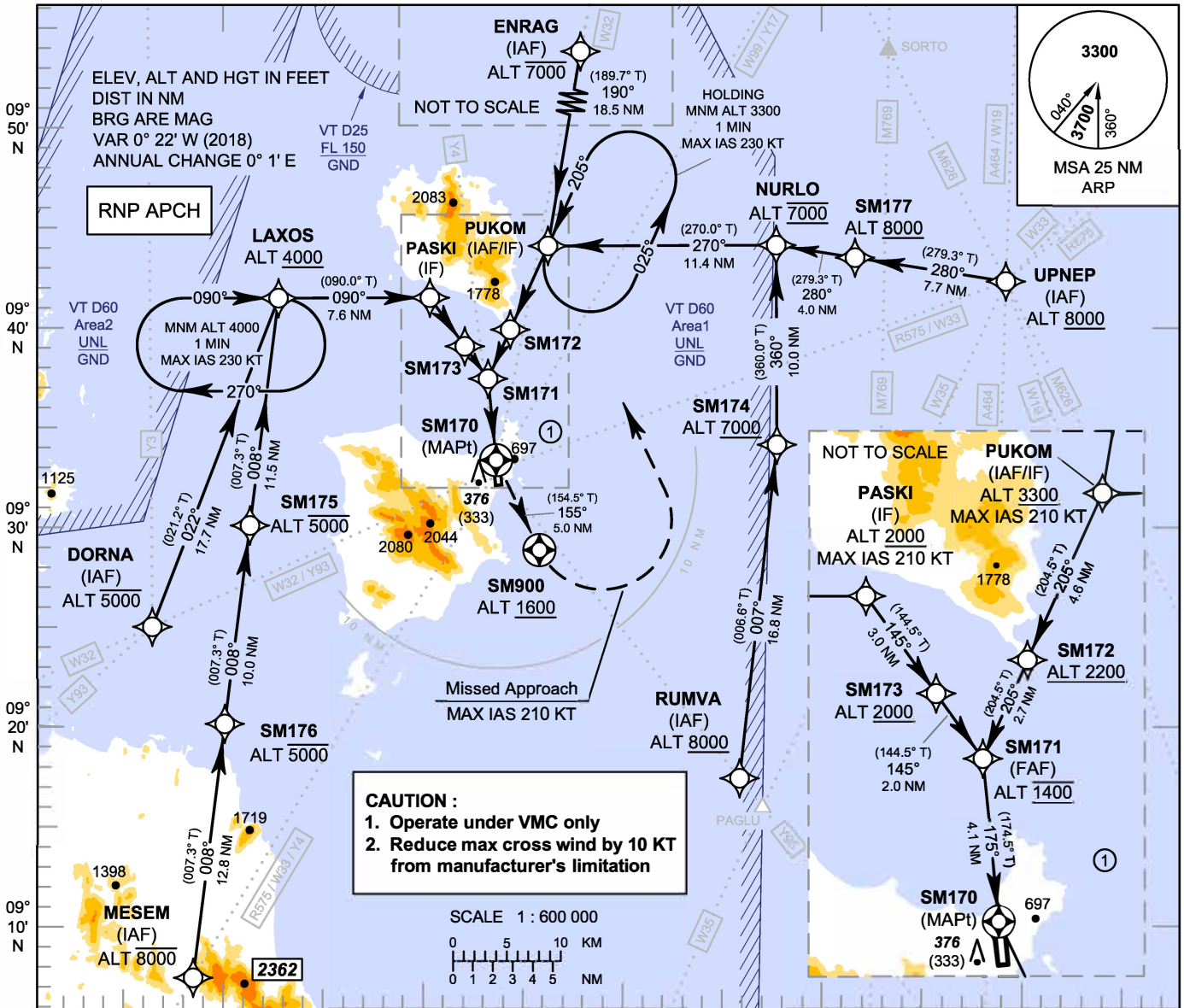


**INSTRUMENT  
APPROACH  
CHART - ICAO**

**AERODROME ELEV 64 FT  
HEIGHTS RELATED TO  
THR RWY17 - ELEV 43 FT**

APP : 129.6  
TWR : 118.9  
GND : 121.9  
ATIS : 128.6

**SURAT THANI / Samui (VTSM)  
RNP RWY17  
CAT C**



**MISSED APPROACH :**  
No turn before MAPt.  
Speed restricted to MAX IAS 210 KT until after turn.  
At MAPt, turn left climb on track 155° to SM900, then turn left direct to PUKOM at minimum 3300 FT and hold or as directed by ATC.

OCA/H	C	NM to NEXT WPT	FAF	4 NM	3 NM	2.9 NM			
LNAV	1000 (957)	Altitude (Height)	1400 (1357)	1355 (1312)	1040 (997)	1000 (957)			
Circling* (OCH AAL)	1400 (1336)	Ground Speed	knot	70	90	100	120	140	160
* FOR CIRCLING RESTRICTIONS SEE VERSO.		Rate of Descent FAF - MAPt 5.2%	ft/min	369	474	527	632	737	843

CHANGE : CHART TITLE.