

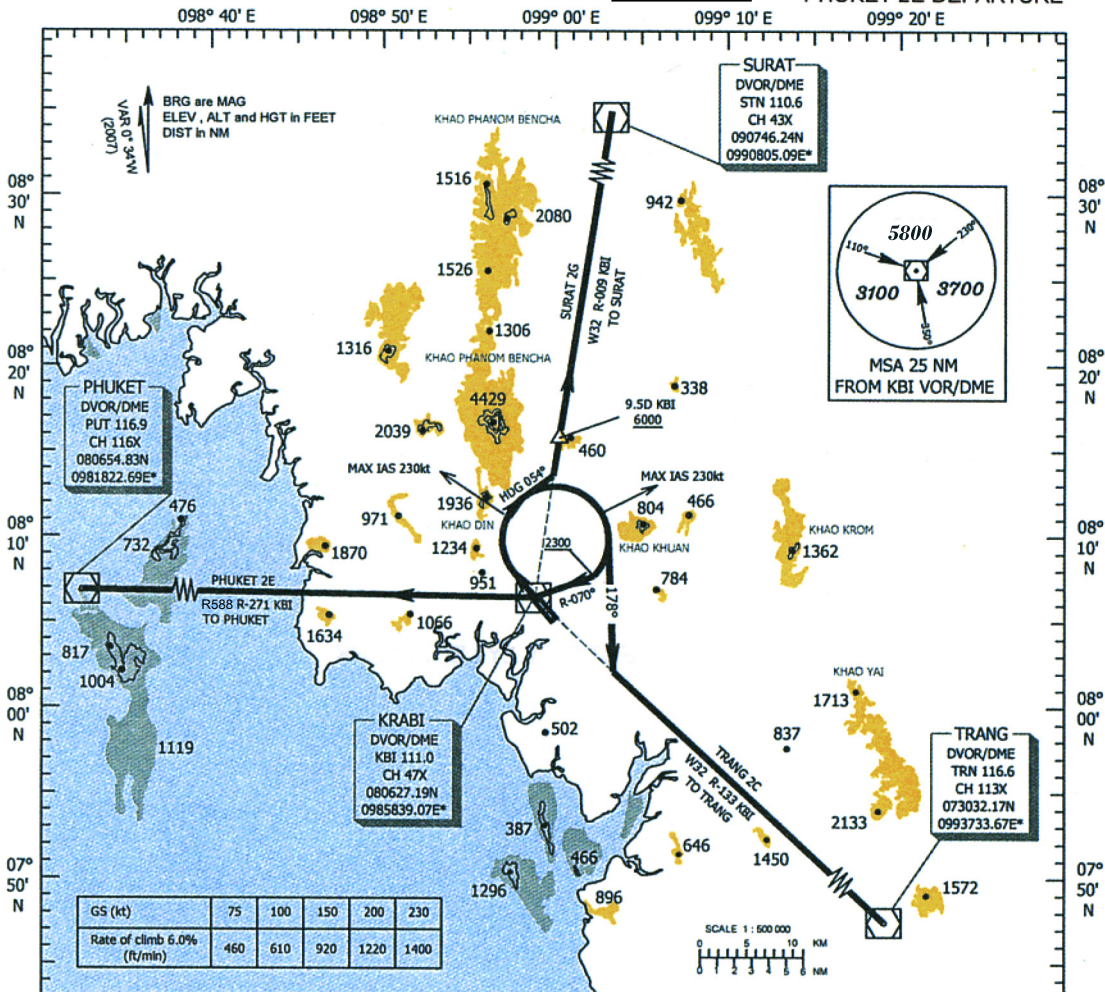
STANDARD INSTRUMENT DEPARTURE (SID)  
CHART - ICAO

KRABI / Krabi (VTSG)  
RWY32

SURAT 2G DEPARTURE  
TRANG 2C DEPARTURE  
PHUKET 2E DEPARTURE

TRANSITION ALTITUDE  
11 000 ft

APP : 120.05  
TWR : 122.5, 236.6  
GND : 121.9  
ATIS : 132.4



**COMMUNICATION FAILURE PROCEDURE**

- Squawk A7600
- Comply with last assigned level until next reporting point then climb to flight plan cruising level.

**WARNING**

- No turn before Departure End of Runway
- Min Procedure Design Gradient = 6.0 %
- Max IAS 230kt for turning after departure

**SURAT TWO GOLF :** (SURAT 2G)  
Climb on runway heading until 800ft , then continue climbing turn right heading 054° to intercept and proceed along KBI R-009 outbound and maintain 6000ft or above at 9.5D KBI to SURAT DVOR/DME

**TRANG TWO CHALIE :** (TRANG 2C)  
Climb on runway heading until 800ft , then continue climbing turn right heading 178° to intercept and proceed along KBI R-133 to TRANG DVOR/DME

**PHUKET TWO ECHO :** (PHUKET 2E)  
Climb on runway heading until 800ft , then continue climbing turn right to intercept KBI R-070 at 2300ft or above to KBI and proceed along KBI R-271 outbound to PHUKET DVOR/DME

CHANGE: TWR FREQUENCY, GND FREQUENCY ADDED.  
ATIS FREQUENCY ADDED, R588 ADDED.  
CANCEL W13.