

**STANDARD DEPARTURE CHART-
INSTRUMENT (SID) - ICAO**

TRANSITION ALTITUDE 11000 FT
SPEED RESTRICTION MAX IAS 250 KT AT OR BELOW ALT 10000 FT UNLESS OTHERWISE AUTHORIZED BY ATC.

APP	: 119.1, 262.5
	: 119.4, 262.5
	: 120.3, 262.5
	: 128.95, 262.5
	: 122.35, 262.5
	: 124.35, 262.5
	: 125.2, 262.5
DAR	: 133.0, 262.5
TWR	: 118.1, 236.6
DEP ATIS	: 118.55

**BANGKOK/Don Mueang Intl (VTBD)
RNAV RWY21R**

DOSBU3A GORSI3A HHN3A
KASNI3A KIGOB3A REGOS3A
RYN3A SABIS3A UKERA3A

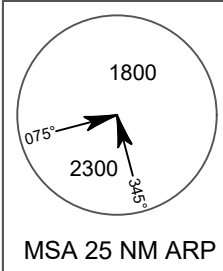
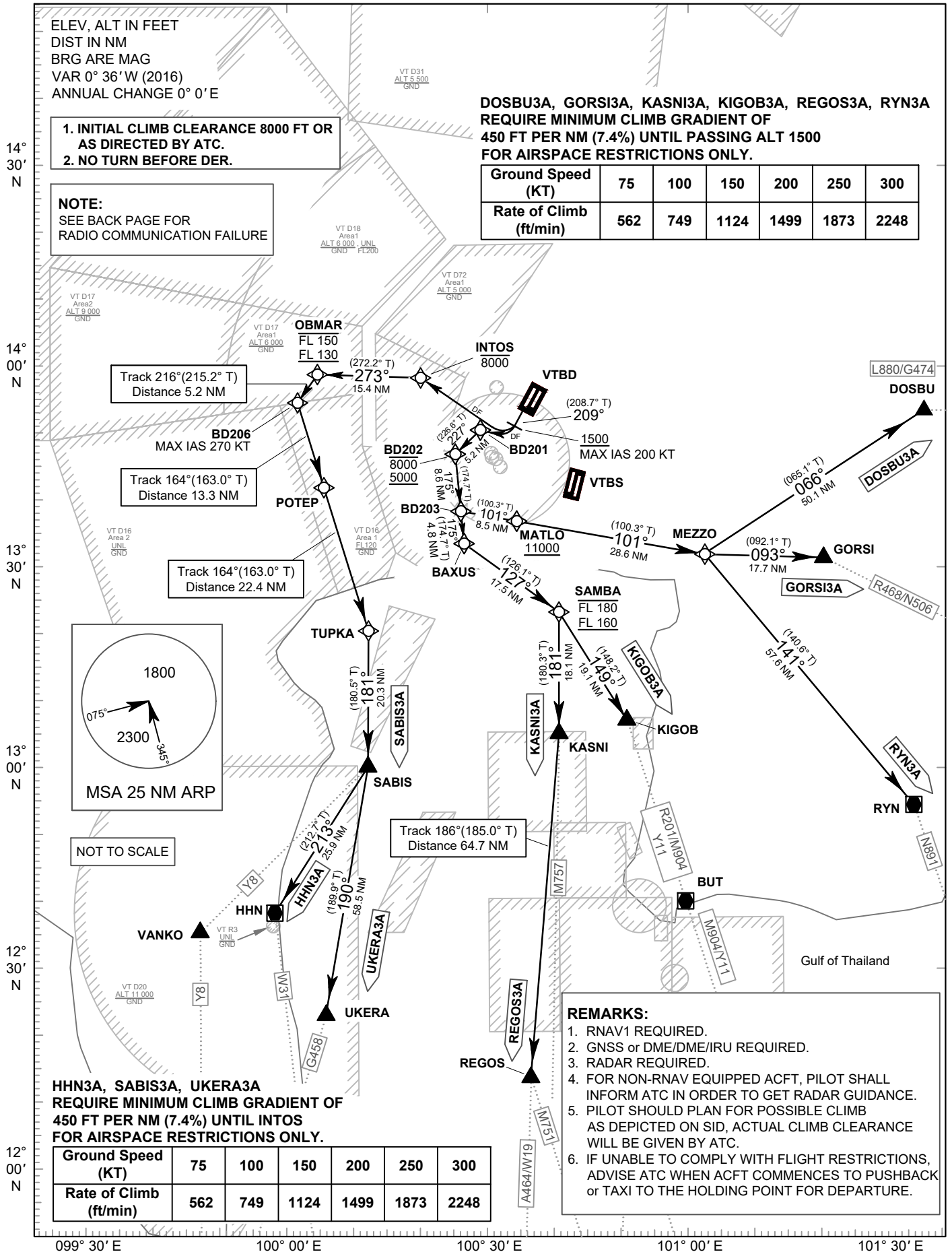
ELEV, ALT IN FEET
DIST IN NM
BRG ARE MAG
VAR 0° 36' W (2016)
ANNUAL CHANGE 0° 0' E

- INITIAL CLIMB CLEARANCE 8000 FT OR AS DIRECTED BY ATC.
- NO TURN BEFORE DER.

NOTE:
SEE BACK PAGE FOR
RADIO COMMUNICATION FAILURE

**DOSBU3A, GORSI3A, KASNI3A, KIGOB3A, REGOS3A, RYN3A
REQUIRE MINIMUM CLIMB GRADIENT OF
450 FT PER NM (7.4%) UNTIL PASSING ALT 1500
FOR AIRSPACE RESTRICTIONS ONLY.**

Ground Speed (KT)	75	100	150	200	250	300
Rate of Climb (ft/min)	562	749	1124	1499	1873	2248



**HHN3A, SABIS3A, UKERA3A
REQUIRE MINIMUM CLIMB GRADIENT OF
450 FT PER NM (7.4%) UNTIL INTOS
FOR AIRSPACE RESTRICTIONS ONLY.**

Ground Speed (KT)	75	100	150	200	250	300
Rate of Climb (ft/min)	562	749	1124	1499	1873	2248

REMARKS:

- RNAV1 REQUIRED.
- GNSS or DME/DME/IRU REQUIRED.
- RADAR REQUIRED.
- FOR NON-RNAV EQUIPPED ACFT, PILOT SHALL INFORM ATC IN ORDER TO GET RADAR GUIDANCE.
- PILOT SHOULD PLAN FOR POSSIBLE CLIMB AS DEPICTED ON SID, ACTUAL CLIMB CLEARANCE WILL BE GIVEN BY ATC.
- IF UNABLE TO COMPLY WITH FLIGHT RESTRICTIONS, ADVISE ATC WHEN ACFT COMMENCES TO PUSHBACK or TAXI TO THE HOLDING POINT FOR DEPARTURE.

CHANGE: APP FREQ. DAR FREQ. DEP ATIS ADDED.