

## VTUK AD 2.1 AERODROME LOCATION INDICATOR AND NAME

## VTUK - KHON KAEN / KHON KAEN AIRPORT

## VTUK AD 2.2 AERODROME GEOGRAPHICAL AND ADMINISTRATIVE DATA

1	ARP coordinates and site at AD	162752.39N 1024656.19E
2	Direction and distance from (city)	APRX 8 KM SE from the city
3	Elevation/Reference temperature	670 FT/37°C
4	Geoid Undulation at AD ELEV PSN	NIL
5	MAG VAR/Annual change	0.80°W(2016)/0.01°W
5	AD Administration, address, telephone, telefax, telex, AFS	Director of Khon Kaen Airport Khon Kaen Airport 68/24 Moo 5, Tambon Banped Amphoe Muang Khon Kaen Province 40000, Thailand Tel: +664 346 8170-5 Fax: +664 346 8186 AFS: VTUKYDYX
6	Types of traffic permitted (IFR/VFR)	IFR/VFR
7	Remarks	Operator: Department of Airports

## VTUK AD 2.3 OPERATIONAL HOURS

1	Aerodrome Operator	2300-1500
2	Customs and immigration	2300-1500 Other than this period on request
3	Health and sanitation	2300-1500 Other than this period on request
4	AIS Briefing Office	NIL
5	ATS Reporting Office (ARO)	2300-1500
6	MET Briefing Office	NIL
7	ATS	2300-1500
8	Fuelling	2400-1300 Other than this period on request
9	Handling	NIL
10	Security	NIL
11	De-icing	NIL
12	Remarks	ATS Reporting Office (ARO): Located at Udon Thani Air Traffic Control Centre (1st floor of tower building) Tel: +664 223 0124 +669 2262 3477 Fax: +664 224 2797

**VTUK AD 2.4 HANDLING SERVICES AND FACILITIES**

1	Cargo-handling facilities	NIL
2	Fuel/oil types	JET A-1
3	Fuelling facilities/capacity	1 JET A-1 Refueller @ 12,000 L 1 JET A-1 Refueller @ 8,000 L 1 AVGAS Refueller @ 3,000 L
4	De-icing facilities	NIL
5	Hangar space for visiting aircraft	NIL
6	Repair facilities for visiting aircraft	NIL
7	Remarks	NIL

**VTUK AD 2.5 PASSENGER FACILITIES**

1	Hotels	In the city
2	Restaurants	Available at the airport and in the city
3	Transportation	Taxi and Car Rental and Bus
4	Medical facilities	NIL
5	Bank and Post Office	Bank: open from 0030-1300 Post office: open from 0330-1330
6	Tourist Office	NIL
7	Remarks	NIL

**VTUK AD 2.6 RESCUE AND FIRE FIGHTING SERVICES**

1	AD category for fire fighting	Category 8
2	Rescue equipment	Yes
3	Capability for removal of disabled aircraft	NIL
4	Remarks	NIL

**VTUK AD 2.7 SEASONAL AVAILABILITY - CLEARING**

1	Types of clearing equipment	NIL
2	Clearance priorities	NIL
3	Remarks	The aerodrome is available all seasons.

**VTUK AD 2.8 APRONS, TAXIWAYS AND CHECK LOCATIONS/POSITIONS DATA**

1	Apron surface and strength	Surface: Concrete Strength: PCN 65/R/C/X/T
2	Taxiway width, surface and strength	Width: 23 M Surface: Concrete and asphalt Strength: PCN 65/F/C/X/T
3	Altimeter checkpoint location and elevation	NIL
4	VOR checkpoints	NIL
5	INS checkpoints	NIL
6	Remarks	NIL

**VTUK AD 2.9 SURFACE MOVEMENT GUIDANCE AND CONTROL SYSTEM AND MARKINGS**

1	Use of aircraft stand ID signs, TWY guide lines and visual docking/parking guidance system of aircraft stands	NIL
2	RWY and TWY markings and LGT	RWY and TWY: Marked and lighted
3	Stop bars	NIL
4	Remarks	NIL

**VTUK AD 2.10 AERODROME OBSTACLES**

In approach/TKOF areas			In circling areas and at AD		Remarks
1			2		3
RWY/Area affected	Obstacle type Elevation Markings/LGT	Coordinates	Obstacle type Elevation Markings/LGT	Coordinates	
a	b	c	a	b	
NIL	NIL	NIL	NIL	NIL	NIL

**VTUK AD 2.11 METEOROLOGICAL INFORMATION PROVIDED**

1	Associated MET Office	Upper Northeastern Meteorological Center, Thai Meteorological Department (TMD)
2	Hours of service MET Office outside hours	H24 NIL
3	Office responsible for TAF preparation Periods of validity	Upper Northeastern Meteorological Center 24 HR
4	Type of landing forecast Interval of issuance	TREND 1 HR
5	Briefing/consultation provided	Personal Consultation Tel: +664 346 8224 Fax: +664 346 8086
6	Flight documentation Language(s) used	Charts, Tabular forms and Abbreviated Plain Language Texts English
7	Charts and other information available for briefing or consultation	S, U85, U70, U50, U40, U30, U25, U20, SWH, SWM, SWL, P85, P70, P50, P40, P30, P25, P20, P15, satellite and radar images
8	Supplementary equipment available for providing information	Automated Weather Observation System (AWOS), Low Level Wind Shear Alert System (LLWAS) and Weather Radar
9	ATS units provided with information	Khon Kaen TWR
10	Additional information (limitation of service, etc.)	NIL

VTUK AD 2.12 RUNWAY PHYSICAL CHARACTERISTICS

Designations RWY NR	TRUE BRG	Dimensions of RWY(M)	Strength (PCN) and surface of RWY and SWY	THR coordinates RWY end coordinates THR geoid undulation	THR elevation and highest elevation of TDZ of precision APP RWY
1	2	3	4	5	6
03	033.94°	3050x45	PCN 65/F/C/X/T Concrete and asphalt	162722.26N 1024636.04E	THR 601 FT TDZ 635 FT
21	213.94°	3050x45	PCN 65/F/C/X/T Concrete and asphalt	162837.46N 1024726.33E	THR 670 FT TDZ 670 FT

Slope of RWY-SWY	SWY dimensions (M)	CWY dimensions (M)	Strip dimensions (M)	OFZ	Remarks
7	8	9	10	11	12
+0.80%	NIL	NIL	3170x300	NIL	NIL
-0.60%	NIL	NIL	3170x300	NIL	NIL

VTUK AD 2.13 DECLARED DISTANCES

RWY Designator	TORA (M)	TODA (M)	ASDA (M)	LDA (M)	Remarks
1	2	3	4	5	6
03	3050	3050	3050	2900	NIL
21	3050	3050	3050	2900	NIL

VTUK AD 2.14 APPROACH AND RUNWAY LIGHTING

RWY Designator	APCH LGT type LEN INTST	THR LGT colour WBAR	VASIS (MEHT) PAPI	TDZ, LGT LEN	RWY Centre Line LGT Length, spacing, colour, INTST	RWY edge LGT LEN, spacing, colour INTST	RWY End LGT colour WBAR	SWY LGT LEN (M) colour	Remarks
1	2	3	4	5	6	7	8	9	10
03	RTIL	Green WBAR	PAPI Left 3°	NIL	NIL	3050 M 60 M White, LIH	Red	NIL	NIL
21	RTIL	Green WBAR	PAPI Left 3°	NIL	NIL	3050 M 60 M White, LIH	Red	NIL	NIL

VTUK AD 2.15 OTHER LIGHTING, SECONDARY POWER SUPPLY

1	ABN/IBN location, characteristics and hours of operation	ABN: At Tower Building, FLG W G EV 7 SEC
2	LDI location and LGT Anemometer location and LGT	NIL
3	TWY edge and centre line lighting	Edge: All taxiway
4	Secondary power supply/switch-over time	Secondary power supply to all lighting at the airport, Switch-over time: 15 SEC
5	Remarks	Flares 2 HR PN



**VTUK AD 2.16 HELICOPTER LANDING AREA**

1	Coordinates TLOF or THR of FATO Geoid undulation	NIL
2	TLOF and/or FATO elevation M/FT	NIL
3	TLOF and FATO area dimensions, surface, strength, marking	NIL
4	True and MAG BRG of FATO	NIL
5	Declared distance available	NIL
6	APP and FATO lighting	NIL
7	Remarks	NIL

**VTUK AD 2.17 ATS AIRSPACE**

1	Designation and lateral limits	A circle of 5 NM radius centred on KKN DVOR/DME (162814.73N1024716.07E)
2	Vertical limits	2000 FT/AGL
3	Airspace classification	C
4	ATS unit call sign Language(s)	KHON KAEN TOWER English, Thai
5	Transition altitude	11000 FT
6	Remarks	NIL

**VTUK AD 2.18 ATS COMMUNICATION FACILITIES**

Service designation	Call sign	Frequency	Hours of operation	Remarks
1	2	3	4	5
APP	Khon Kaen Approach	123.4 MHZ 240.0 MHZ 121.5 MHZ <sup>1)</sup>	As AD OPR HR	<sup>1)</sup> Emergency frequency
TWR	Khon Kaen Tower	122.25 MHZ 236.6 MHZ 121.5 MHZ <sup>1)</sup>	As AD OPR HR	
GND	Khon Kaen Ground	121.9 MHZ	As AD OPR HR	
ATIS	Khon Kaen Airport	126.85 MHZ	As AD OPR HR	

**VTUK AD 2.19 RADIO NAVIGATION AND LANDING AIDS**

Type of aid, MAG VAR CAT of ILS/MLS (For VOR/ILS/MLS, give declination)	ID	Frequency	Hours of operation	Position of transmitting antenna coordinates	Elevation of DME transmitting antenna	Remarks
1	2	3	4	5	6	7
NDB	KN	393 KHZ	H24	162743.41N 1024704.18E	NIL	NIL
DVOR/DME	KKN	114.9 MHZ CH96X	H24	162814.73N 1024716.07E	NIL	DVOR/DME restriction due to terrain surround DVOR/DME station, coverage check does not provide adequate signal 40 NM at required altitude in various areas as follows: <ul style="list-style-type: none"> <li>- Radial 001°-080° altitude should not below 2 500 FT</li> <li>- Radial 081°-220° altitude should not below 2 000 FT</li> <li>- Radial 221°-360° altitude should not below 3 500 FT</li> </ul>

**VTUK AD 2.20 LOCAL AERODROME REGULATIONS**

**1. LOCAL PROCEDURES**

1.1 Landing and Take off

Aircraft intended to landing/take off at Khon Kaen Airport take off RWY03 and land at RWY21 only, except for the safe of aircraft.

**2. 180 DEGREES TURN ON THE RUNWAY**

To prevent runway pavement damage which may result in the closure of the aerodrome if such damage is severe, aircraft code letter C or higher shall make 180 degrees turn at the runway turn pads located on both end of runway. Any breach done by the aircraft operator shall be recorded and reported to The Civil Aviation Authority of Thailand (CAAT)/ The Headquarter of that operator shall be liable for the compensation caused by such violation.

**VTUK AD 2.21 NOISE ABATEMENT PROCEDURES**

NIL

**VTUK AD 2.22 FLIGHT PROCEDURES**

**1. VFR Procedures**

Details of VFR entry and exit procedures, see charts.

**2. Take-off and Landing when VTD65 Active**

During military air exercise taking place on exercise area Nam Phong Range (VTD65), all aircraft departing/arriving VTUK shall comply with the following instructions:

- a) Pilot might be requested to take-off RWY 21 and landing RWY 03.
- b) If unable to comply with RWY restriction, pilot shall inform ATC immediately and expect delay.

**VTUK AD 2.23 ADDITIONAL INFORMATION**

NIL

## VTUK AD 2.24 CHARTS RELATED TO AN AERODROME

Chart name	Page
Aerodrome Chart - ICAO	AD 2-VTUK-2-1
Aircraft Parking/Docking Chart - ICAO	AD 2-VTUK-2-3
Standard Departure Chart - Instrument (SID) - ICAO - RNAV RWY 03 - AKRET1A ALGIT1A EMRUT1A NEMTE1A ONUV11A SEDNO1C	AD 2-VTUK-6-1
Standard Departure Chart - Instrument (SID) - ICAO - RNAV RWY 03 - AKRET1A ALGIT1A EMRUT1A NEMTE1A ONUV11A SEDNO1C (Tabular description)	AD 2-VTUK-6-2
Standard Departure Chart - Instrument (SID) - ICAO - RNAV RWY 03 - AKRET1A ALGIT1A EMRUT1A NEMTE1A ONUV11A SEDNO1C (Waypoint list table)	AD 2-VTUK-6-3
Standard Departure Chart - Instrument (SID) - ICAO - RNAV RWY 21 - AKRET1B ALGIT1B EMRUT1B NEMTE1B ONUV11B SEDNO1D	AD 2-VTUK-6-5
Standard Departure Chart - Instrument (SID) - ICAO - RNAV RWY 21 - AKRET1B ALGIT1B EMRUT1B NEMTE1B ONUV11B SEDNO1D (Tabular description)	AD 2-VTUK-6-6
Standard Departure Chart - Instrument (SID) - ICAO - RNAV RWY 21 - AKRET1B ALGIT1B EMRUT1B NEMTE1B ONUV11B SEDNO1D (Waypoint list table)	AD 2-VTUK-6-7
Instrument Approach Chart - ICAO - NDB z RWY 03	AD 2-VTUK-8-1
Instrument Approach Chart - ICAO - NDB RWY 21	AD 2-VTUK-8-3
Instrument Approach Chart - ICAO - VOR RWY 03	AD 2-VTUK-8-5
Instrument Approach Chart - ICAO - VOR RWY 03 (Fix and point list table)	AD 2-VTUK-8-6
Instrument Approach Chart - ICAO - VOR RWY 21	AD 2-VTUK-8-7
Instrument Approach Chart - ICAO - VOR RWY 21 (Fix and point list table)	AD 2-VTUK-8-8
Instrument Approach Chart - ICAO - RNP RWY 03	AD 2-VTUK-8-9
Instrument Approach Chart - ICAO - RNP RWY 03 (Tabular description)	AD 2-VTUK-8-10
Instrument Approach Chart - ICAO - RNP RWY 03 (Waypoint list table)	AD 2-VTUK-8-11
Instrument Approach Chart - ICAO - RNP RWY 21	AD 2-VTUK-8-13
Instrument Approach Chart - ICAO - RNP RWY 21 (Tabular description)	AD 2-VTUK-8-14
Instrument Approach Chart - ICAO - RNP RWY 21 (Waypoint list table)	AD 2-VTUK-8-15
VFR ENTRY PROCEDURE CHART - RWY 03/21 (NORTH)	AD 2-VTUK-9-1
VFR ENTRY PROCEDURE CHART - RWY 03/21 (NORTH) (Tabular description)	AD 2-VTUK-9-2
VFR ENTRY PROCEDURE CHART - RWY 03/21 (SOUTH)	AD 2-VTUK-9-3
VFR ENTRY PROCEDURE CHART - RWY 03/21 (SOUTH) (Tabular description)	AD 2-VTUK-9-4
VFR EXIT PROCEDURE CHART - RWY 03 (NORTH)	AD 2-VTUK-9-5
VFR EXIT PROCEDURE CHART - RWY 03 (NORTH) (Tabular description)	AD 2-VTUK-9-6
VFR EXIT PROCEDURE CHART - RWY 03 (SOUTH)	AD 2-VTUK-9-7
VFR EXIT PROCEDURE CHART - RWY 03 (SOUTH) (Tabular description)	AD 2-VTUK-9-8
VFR EXIT PROCEDURE CHART - RWY 21 (NORTH)	AD 2-VTUK-9-9
VFR EXIT PROCEDURE CHART - RWY 21 (NORTH) (Tabular description)	AD 2-VTUK-9-10
VFR EXIT PROCEDURE CHART - RWY 21 (SOUTH)	AD 2-VTUK-9-11
VFR EXIT PROCEDURE CHART - RWY 21 (SOUTH) (Tabular description)	AD 2-VTUK-9-12

**INTENTIONALLY BLANK**

AERODROME CHART-ICAO

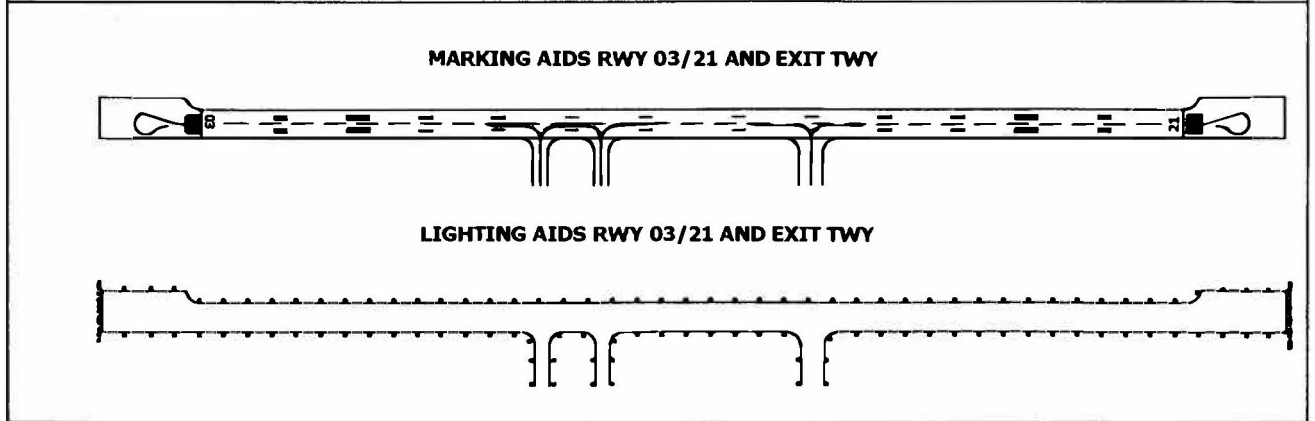
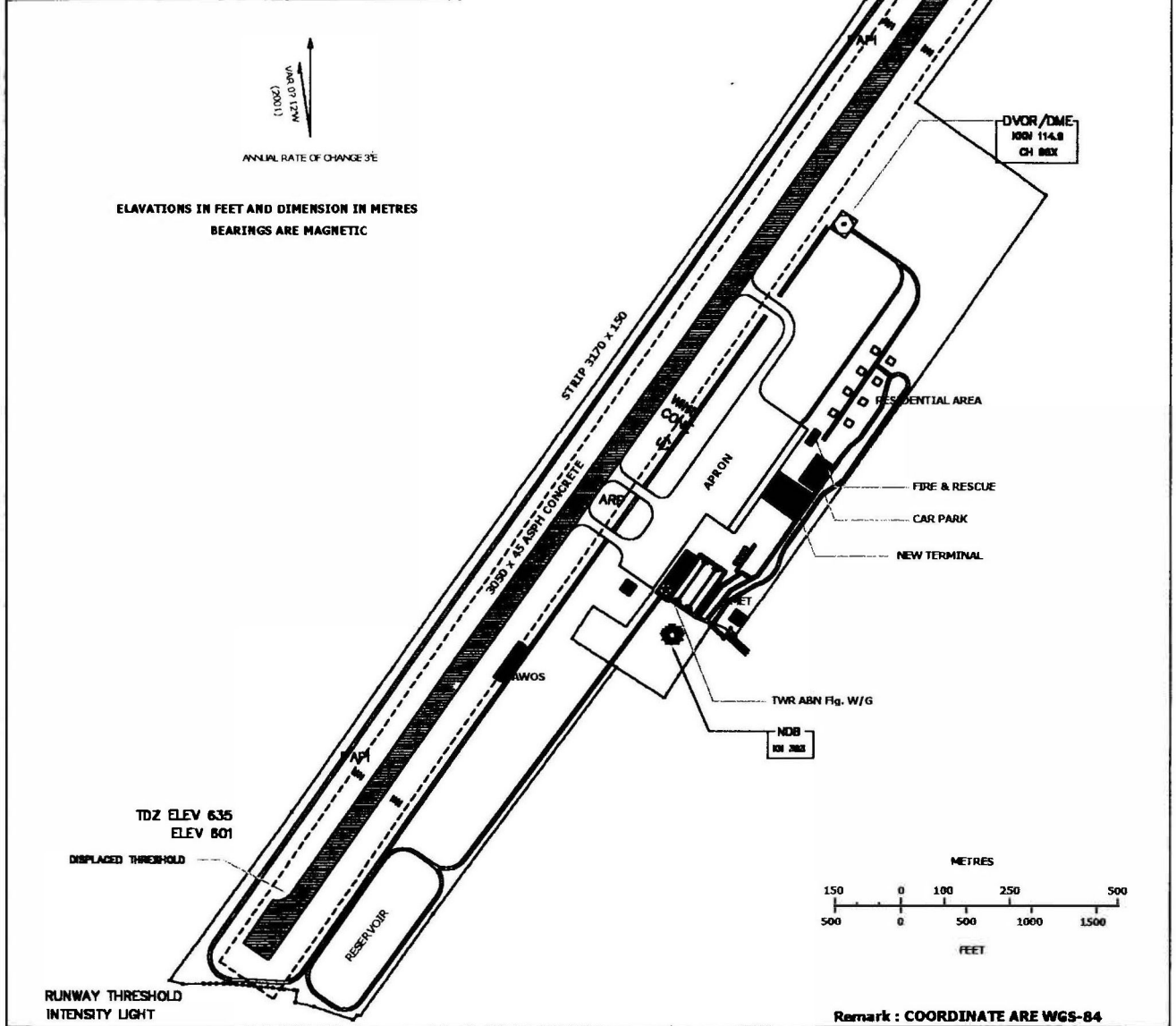
16° 27' 52" N  
102° 46' 56" E

ELEV 670 ft  
204 m

TWR 122.25  
236.6

KHON KAEN/Khon Kaen

RWY	DIRECTION	THR	BEARING STRENGTH
03	34°	16° 27' 22.28" N 102° 46' 36.04" E	PCN 65/F/C/X/T
21	214°	16° 28' 37.66" N 102° 47' 26.33" E	
APRON			PCN 65/R/C/X/T



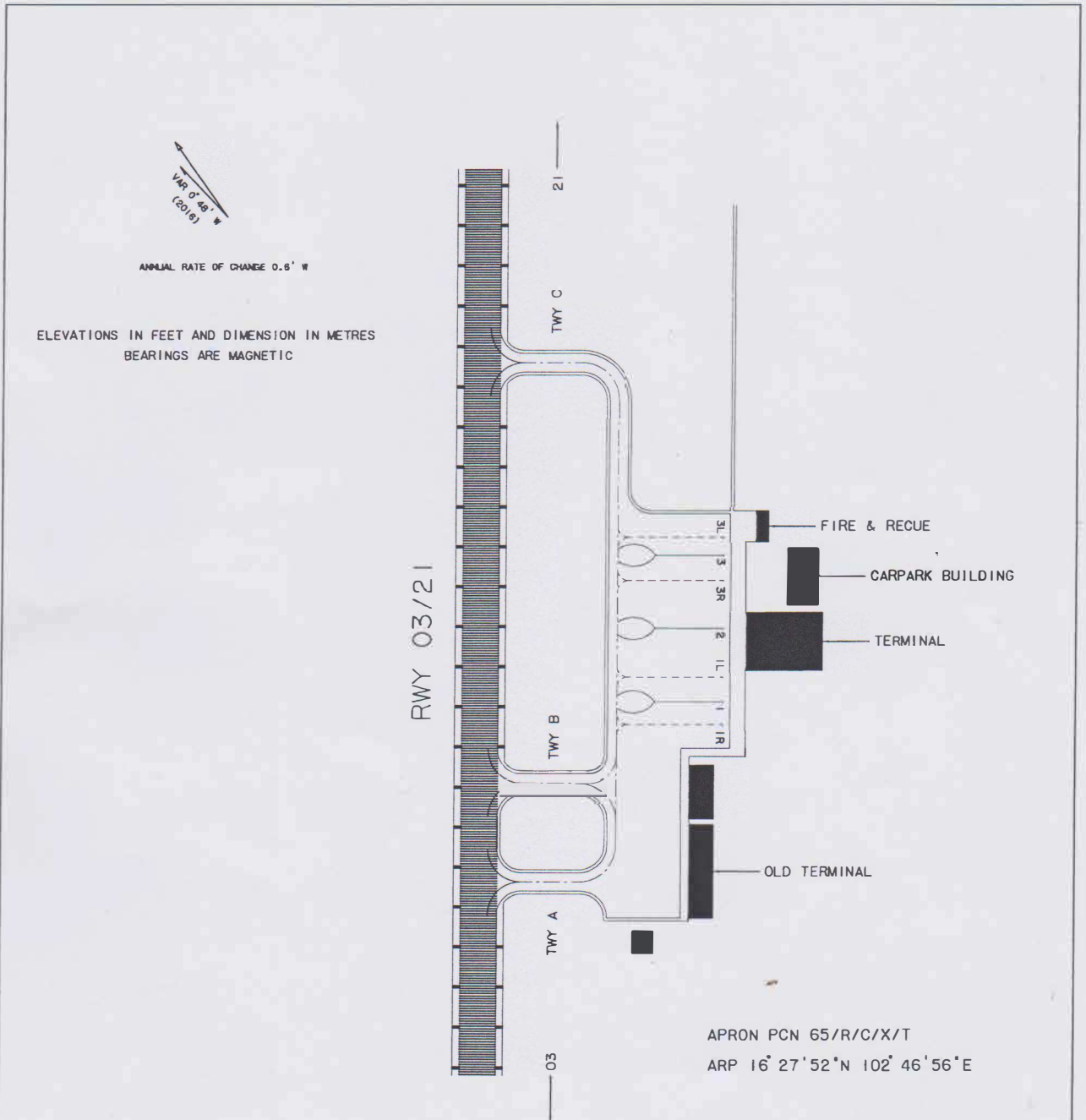
**INTENTIONALLY BLANK**

AIRCRAFT PARKING /  
DOCKING CHART - ICAO

APRON ELEV 633 ft  
193 m

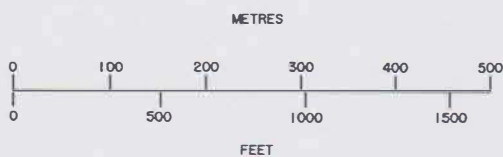
TWR 122.25  
236.60

KHON KAEN /  
Khon Kaen



AIRCRAFT STAND COORDINATES

NR	LAT (N)	LONG (E)	UP TO
1	16° 27' 53.40" N	102° 47' 08.88" E	A 330-300
1L	16° 27' 54.26" N	102° 47' 09.45" E	A 320-200
1R	16° 27' 52.78" N	102° 47' 08.47" E	A 320-200
2	16° 27' 55.90" N	102° 47' 10.55" E	A 330-300
3	16° 27' 58.40" N	102° 47' 12.22" E	A 330-300
3L	16° 27' 59.02" N	102° 47' 12.63" E	A 320-200
3R	16° 27' 57.54" N	102° 47' 11.65" E	A 320-200



Remark : COORDINATES ARE WGS-84

**INTENTIONALLY BLANK**



**STANDARD DEPARTURE CHART -  
INSTRUMENT (SID) - ICAO**

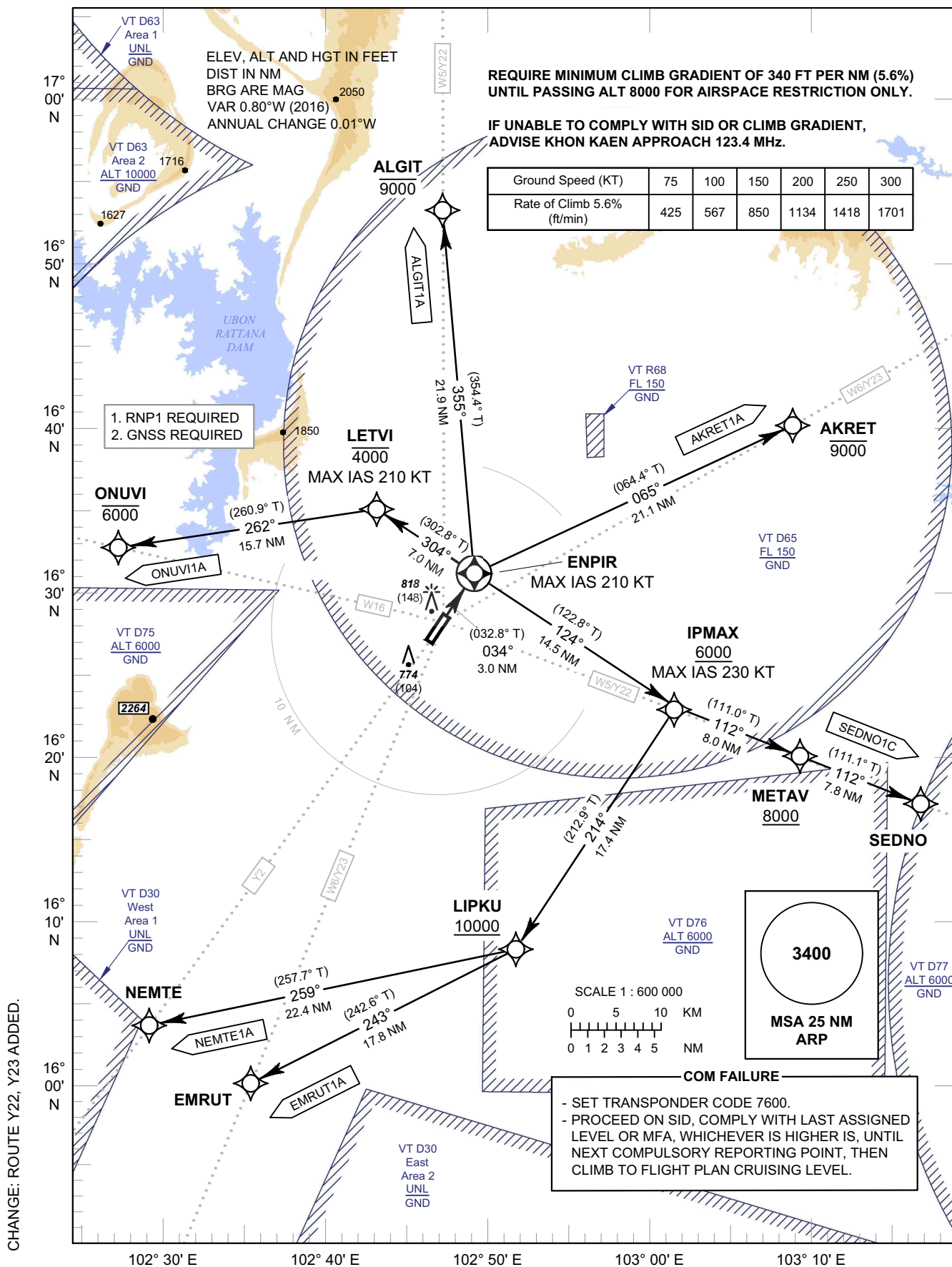
TRANSITION ALTITUDE  
11000 FT

APP : 123.4 , 240.0  
TWR : 122.25 , 236.6  
GND : 121.9  
ATIS : 126.85

**KHON KAEN /  
Khon Kaen (VTUK)**

**RNAV RWY03**

AKRET1A ALGIT1A EMRUT1A  
NEMTE1A ONUVI1A SEDNO1C



STANDARD DEPARTURE CHART -  
INSTRUMENT (SID) - ICAO

KHON KAEN /  
Khon Kaen (VTUK)

RNAV RWY03

AKRET1A ALGIT1A EMRUT1A  
NEMTE1A ONUVI1A SEDNO1C

TABULAR DESCRIPTION

RNAV RWY03											
Serial Number	Path Descriptor	Waypoint Identifier	Flyover	Course ° M (° T)	Magnetic Variation	Distance (NM)	Turn Direction	Altitude (FT)	Speed (KT)	VPA/TCH	Navigation Specification
ALGIT1A											
010	-	DER RWY03	-	-	+0.84	-	-	-	-	-	RNP1
020	CF	ENPIR	Y	034°(032.8°)	+0.84	3.0	-	-	-210	-	RNP1
030	TF	ALGIT	-	355°(354.4°)	+0.84	21.9	-	-9000	-	-	RNP1
AKRET1A											
010	-	DER RWY03	-	-	+0.84	-	-	-	-	-	RNP1
020	CF	ENPIR	Y	034°(032.8°)	+0.84	3.0	-	-	-210	-	RNP1
030	TF	AKRET	-	065°(064.4°)	+0.84	21.1	-	-9000	-	-	RNP1
EMRUT1A											
010	-	DER RWY03	-	-	+0.84	-	-	-	-	-	RNP1
020	CF	ENPIR	Y	034°(032.8°)	+0.84	3.0	R	-	-210	-	RNP1
030	TF	IPMAX	-	124°(122.8°)	+0.84	14.5	R	+6000	-230	-	RNP1
040	TF	LIPKU	-	214°(212.9°)	+0.84	17.4	R	+10000	-	-	RNP1
050	TF	EMRUT	-	243°(242.6°)	+0.84	17.8	-	-	-	-	RNP1
NEMTE1A											
010	-	DER RWY03	-	-	+0.84	-	-	-	-	-	RNP1
020	CF	ENPIR	Y	034°(032.8°)	+0.84	3.0	R	-	-210	-	RNP1
030	TF	IPMAX	-	124°(122.8°)	+0.84	14.5	R	+6000	-230	-	RNP1
040	TF	LIPKU	-	214°(212.9°)	+0.84	17.4	R	+10000	-	-	RNP1
050	TF	NEMTE	-	259°(257.7°)	+0.84	22.4	-	-	-	-	RNP1
SEDNO1C											
010	-	DER RWY03	-	-	+0.84	-	-	-	-	-	RNP1
020	CF	ENPIR	Y	034°(032.8°)	+0.84	3.0	-	-	-210	-	RNP1
030	TF	IPMAX	-	124°(122.8°)	+0.84	14.5	-	+6000	-230	-	RNP1
040	TF	METAV	-	112°(111.0°)	+0.84	8.0	-	+8000	-	-	RNP1
050	TF	SEDNO	-	112°(111.1°)	+0.84	7.8	-	-	-	-	RNP1
ONUVI1A											
010	-	DER RWY03	-	-	+0.84	-	-	-	-	-	RNP1
020	CF	ENPIR	Y	034°(032.8°)	+0.84	3.0	-	-	-210	-	RNP1
030	TF	LETVI	-	304°(302.8°)	+0.84	7.0	-	-4000	-210	-	RNP1
040	TF	ONUVI	-	262°(260.9°)	+0.84	15.7	-	-6000	-	-	RNP1

CHANGE: REVISED CHART.

**STANDARD DEPARTURE CHART -  
INSTRUMENT (SID) - ICAO**

**KHON KAEN /  
Khon Kaen (VTUK)**

**RNAV RWY03**

AKRET1A ALGIT1A EMRUT1A  
NEMTE1A ONUVI1A SEDNO1C

**WAYPOINT LIST**

<b>RNAV RWY03</b>	
Waypoint Identifier	Coordinates
DER RWY03	16° 28' 37.46" N 102° 47' 26.33" E
AKRET	16° 40' 16.00" N 103° 08' 55.51" E
ALGIT	16° 52' 59.94" N 102° 46' 54.83" E
EMRUT	16° 00' 19.64" N 102° 35' 33.26" E
ENPIR	16° 31' 09.32" N 102° 49' 07.92" E
IPMAX	16° 23' 15.12" N 103° 01' 48.22" E
LETVI	16° 34' 57.96" N 102° 43' 00.52" E
LIPKU	16° 08' 34.73" N 102° 51' 59.03" E
METAV	16° 20' 22.00" N 103° 09' 34.14" E
NEMTE	16° 03' 44.79" N 102° 29' 12.78" E
ONUVI	16° 32' 28.21" N 102° 26' 55.02" E
SEDNO	16° 17' 33.31" N 103° 17' 07.18" E

CHANGE: NEW CHART.

**INTENTIONALLY BLANK**

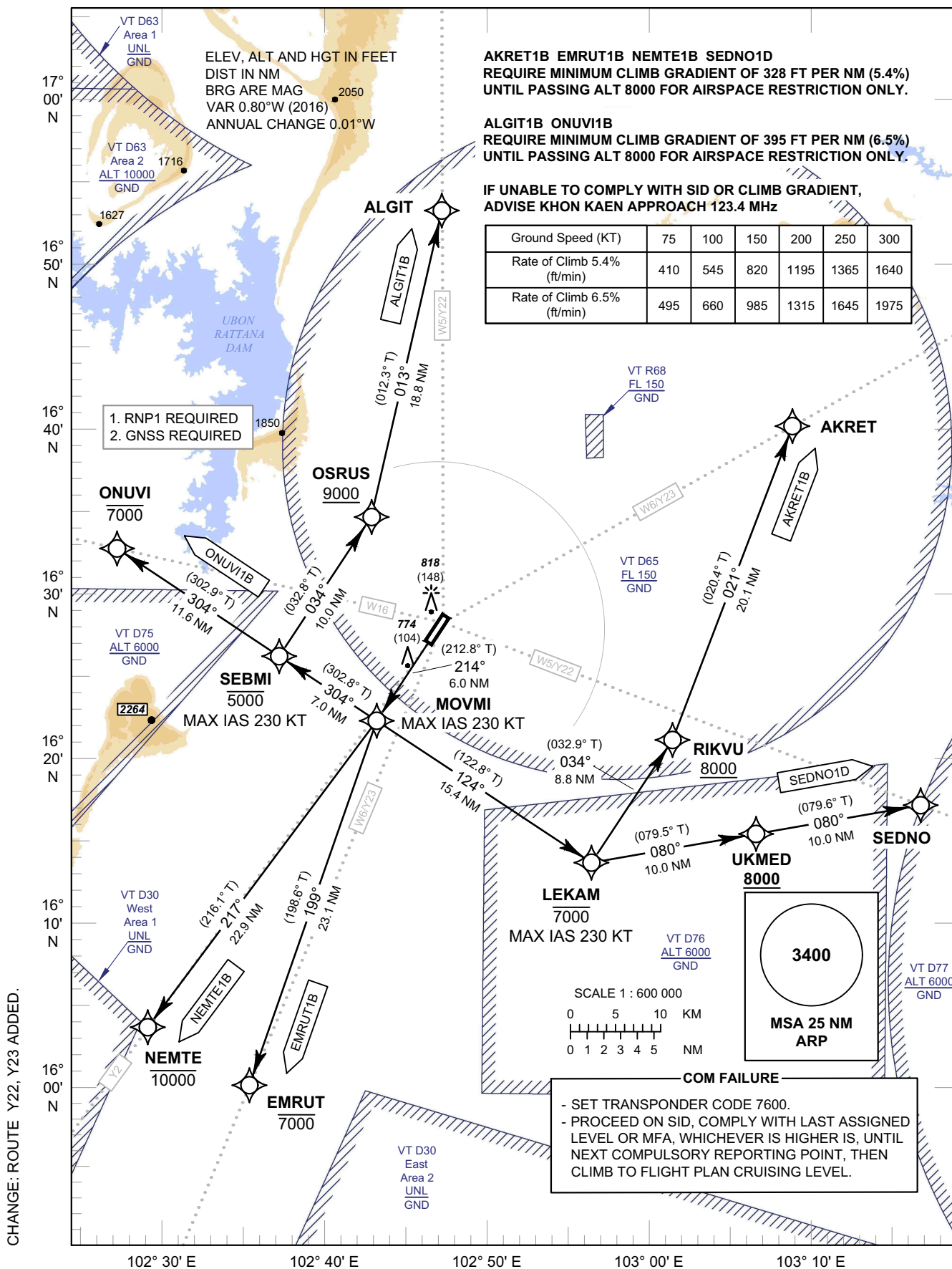
**STANDARD DEPARTURE CHART -  
INSTRUMENT (SID) - ICAO**

TRANSITION ALTITUDE  
11000 FT

APP : 123.4 , 240.0  
TWR : 122.25 , 236.6  
GND : 121.9  
ATIS : 126.85

**KHON KAEN /  
Khon Kaen (VTUK)**  
**RNAV RWY21**

AKRET1B ALGIT1B EMRUT1B  
NEMTE1B ONUVI1B SEDNO1D



STANDARD DEPARTURE CHART -  
INSTRUMENT (SID) - ICAO

KHON KAEN /  
Khon Kaen (VTUK)

RNAV RWY21

AKRET1B ALGIT1B EMRUT1B  
NEMTE1B ONUVI1B SEDNO1D

TABULAR DESCRIPTION

RNAV RWY21											
Serial Number	Path Descriptor	Waypoint Identifier	Flyover	Course ° M (° T)	Magnetic Variation	Distance (NM)	Turn Direction	Altitude (FT)	Speed (KT)	VPA/ TCH	Navigation Specification
AKRET1B											
010	-	DER RWY21	-	-	+ 0.84	-	-	-	-	-	RNP1
020	CF	MOVMI	-	214°(212.8°)	+ 0.84	6.0	-	-	- 230	-	RNP1
030	TF	LEKAM	-	124°(122.8°)	+ 0.84	15.4	-	-7000	- 230	-	RNP1
040	TF	RIKVU	-	034°(032.9°)	+ 0.84	8.8	-	+8000	-	-	RNP1
050	TF	AKRET	-	021°(020.4°)	+ 0.84	20.1	-	-	-	-	RNP1
ALGIT1B											
010	-	DER RWY21	-	-	+ 0.84	-	-	-	-	-	RNP1
020	CF	MOVMI	-	214°(212.8°)	+ 0.84	6.0	-	-	- 230	-	RNP1
030	TF	SEBMI	-	304°(302.8°)	+ 0.84	7.0	-	-5000	- 230	-	RNP1
040	TF	OSRUS	-	034°(032.8°)	+ 0.84	10.0	-	+9000	-	-	RNP1
040	TF	ALGIT	-	013°(012.3°)	+ 0.84	18.8	-	-	-	-	RNP1
EMRUT1B											
010	-	DER RWY21	-	-	+ 0.84	-	-	-	-	-	RNP1
020	CF	MOVMI	-	214°(212.8°)	+ 0.84	6.0	-	-	- 230	-	RNP1
030	TF	EMRUT	-	199°(198.6°)	+ 0.84	23.1	-	-7000	-	-	RNP1
NEMTE1B											
010	-	DER RWY21	-	-	+ 0.84	-	-	-	-	-	RNP1
020	CF	MOVMI	-	214°(212.8°)	+ 0.84	6.0	-	-	- 230	-	RNP1
030	TF	NEMTE	-	217°(216.1°)	+ 0.84	22.9	-	-10000	-	-	RNP1
ONUVI1B											
010	-	DER RWY21	-	-	+ 0.84	-	-	-	-	-	RNP1
020	CF	MOVMI	-	214°(212.8°)	+ 0.84	6.0	-	-	- 230	-	RNP1
030	TF	SEBMI	-	304°(302.8°)	+ 0.84	7.0	-	-5000	- 230	-	RNP1
040	TF	ONUVI	-	304°(302.9°)	+ 0.84	11.6	-	-7000	-	-	RNP1
SEDNO1D											
010	-	DER RWY21	-	-	+ 0.84	-	-	-	-	-	RNP1
020	CF	MOVMI	-	214°(212.8°)	+ 0.84	6.0	-	-	- 230	-	RNP1
030	TF	LEKAM	-	124°(122.8°)	+ 0.84	15.4	-	-7000	- 230	-	RNP1
040	TF	UKMED	-	080°(079.5°)	+ 0.84	10.0	-	+8000	-	-	RNP1
050	TF	SEDNO	-	080°(079.6°)	+ 0.84	10.0	-	-	-	-	RNP1

CHANGE : SEBMI ALT.

STANDARD DEPARTURE CHART -  
INSTRUMENT (SID) - ICAO

**KHON KAEN /  
Khon Kaen (VTUK)**

**RNAV RWY21**

AKRET1B ALGIT1B EMRUT1B  
NEMTE1B ONUVI1B SEDNO1D

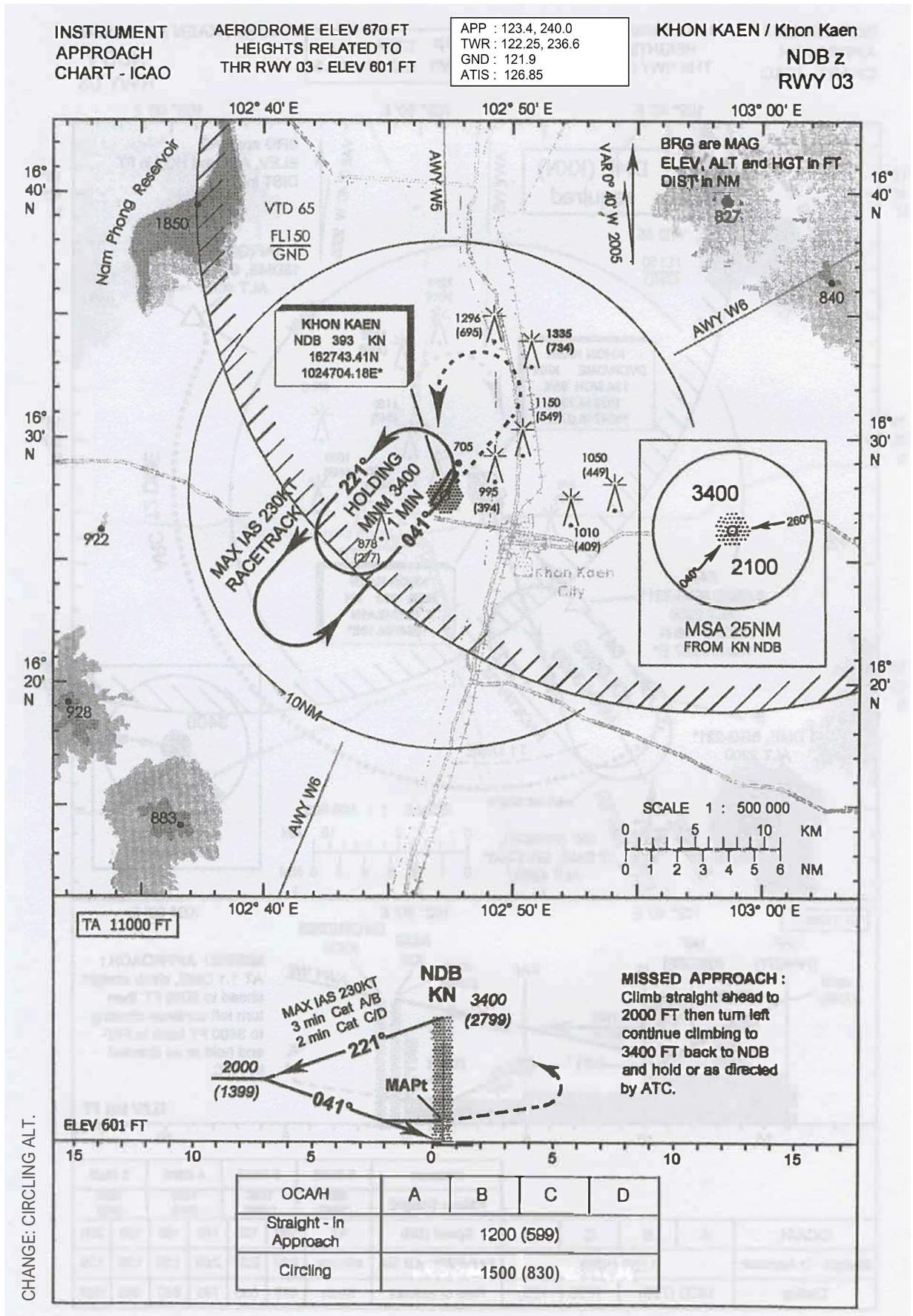
**WAYPOINT LIST**

RNAV RWY21	
Waypoint Identifier	Coordinates
DER RWY21	16° 27' 22.26" N 102° 46' 36.04" E
AKRET	16° 40' 16.00" N 103° 08' 55.51" E
ALGIT	16° 52' 59.94" N 102° 46' 54.83" E
EMRUT	16° 00' 19.64" N 102° 35' 33.26" E
LEKAM	16° 13' 55.19" N 102° 56' 40.12" E
MOVMI	16° 22' 18.49" N 102° 43' 13.03" E
NEMTE	16° 03' 44.79" N 102° 29' 12.78" E
ONUVI	16° 32' 28.21" N 102° 26' 55.02" E
OSRUS	16° 34' 33.39" N 102° 42' 44.08" E
RIKVU	16° 21' 20.39" N 103° 01' 38.23" E
SEBMI	16° 26' 06.97" N 102° 37' 05.78" E
SEDNO	16° 17' 33.31" N 103° 17' 07.18" E
UKMED	16° 15' 44.50" N 103° 06' 53.56" E

CHANGE: NEW CHART.

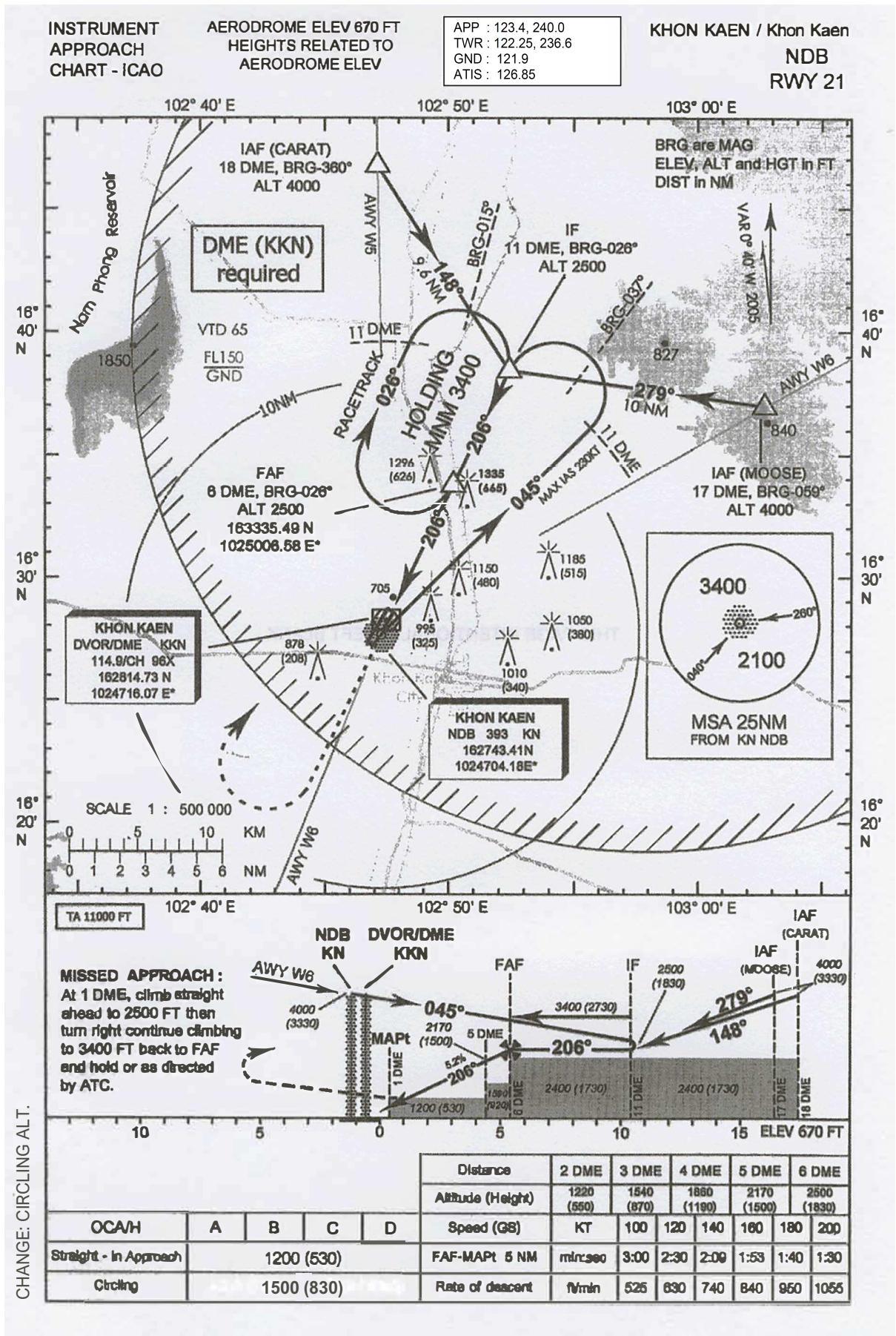
**INTENTIONALLY BLANK**





**INTENTIONALLY BLANK**





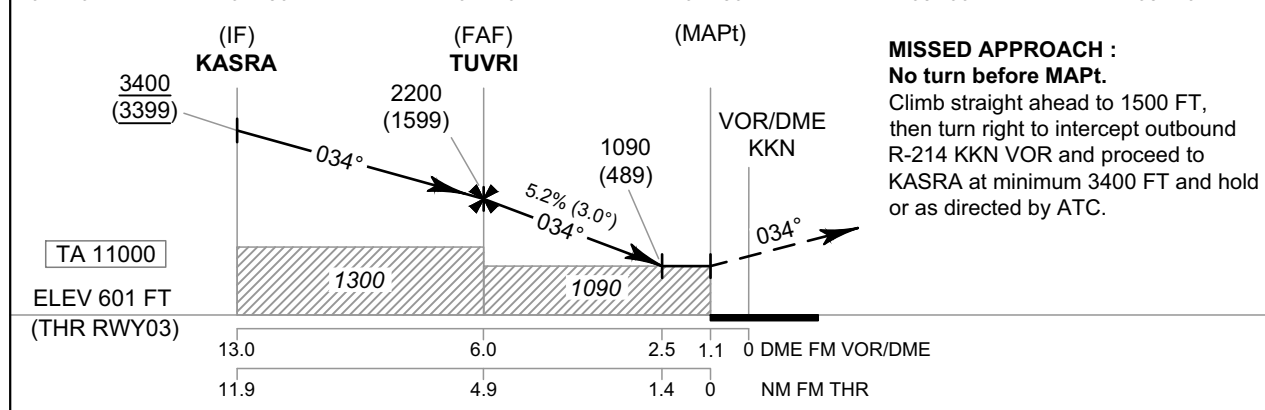
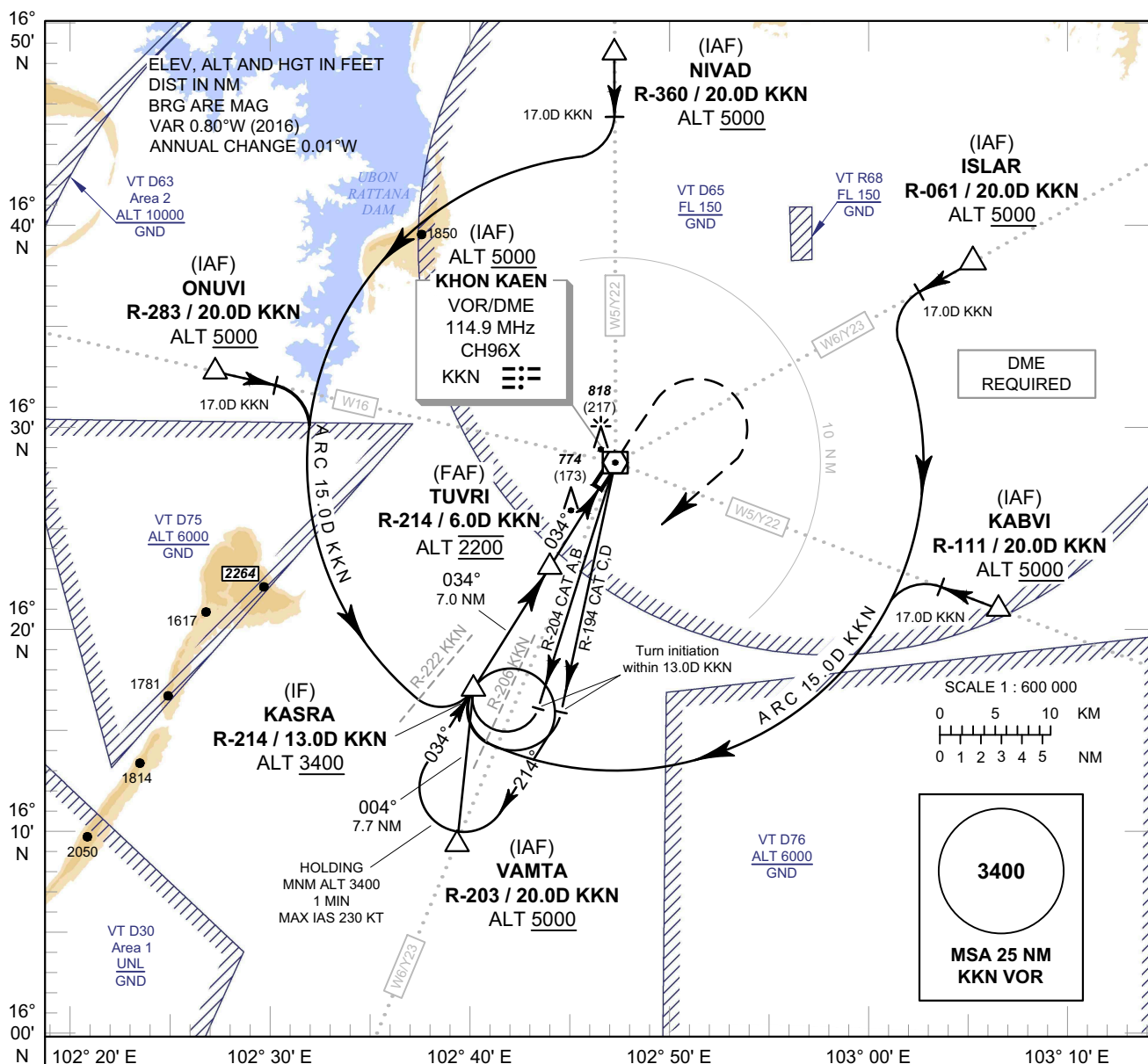
**INTENTIONALLY BLANK**

**INSTRUMENT  
APPROACH  
CHART - ICAO**

**AERODROME ELEV 670 FT  
HEIGHTS RELATED TO  
THR RWY03 - ELEV 601 FT**

APP : 123.4 , 240.0  
TWR : 122.25 , 236.6  
GND : 121.9  
ATIS : 126.85

**KHON KAEN /  
Khon Kaen (VTUK)  
VOR RWY03**



CHANGE: ROUTE Y22, Y23 ADDED.

OCA/H	A	B	C	D	Distance (KKN)	FAF	5 D	4 D	3 D	2.5 D		
Straight-in Approach	1090 (489)				Altitude (Height)	2200 (1599)	1885 (1284)	1565 (964)	1250 (649)	1090 (489)		
					Ground Speed	knot	70	90	100	120	140	160
Circling (OCH AAL)	1500 (830)				Rate of Descent 5.2%	ft/min	369	474	527	632	737	843

**INSTRUMENT  
APPROACH  
CHART - ICAO**

**AERODROME ELEV 670 FT  
HEIGHTS RELATED TO  
THR RWY03 - ELEV 601 FT**

**KHON KAEN /  
Khon Kaen (VTUK)  
VOR RWY03**

Fix / Point		Coordinates	
(IAF) ISLAR	R-061 / 20.0D KKN	16° 38' 15.95" N	103° 05' 18.75" E
(IAF) KABVI	R-111 / 20.0D KKN	16° 21' 16.12" N	103° 06' 46.71" E
(IAF) NIVAD	R-360 / 20.0D KKN	16° 48' 19.55" N	102° 46' 59.27" E
(IAF) ONUVI	R-283 / 20.0D KKN	16° 32' 28.21" N	102° 26' 55.02" E
(IAF) VAMTA	R-203 / 20.0D KKN	16° 09' 38.08" N	102° 39' 27.17" E
(IF) KASRA	R-214 / 13.0D KKN	16° 17' 18.69" N	102° 39' 52.88" E
(FAF) TUVRI	R-214 / 6.0D KKN	16° 23' 11.98" N	102° 43' 51.41" E
(MAPt) UK903	R-214 / 1.1D KKN	16° 27' 20.26" N	102° 46' 39.23" E
(IAF) VOR	KKN	16° 28' 14.73" N	102° 47' 16.07" E

CHANGE: REVISED CHART.

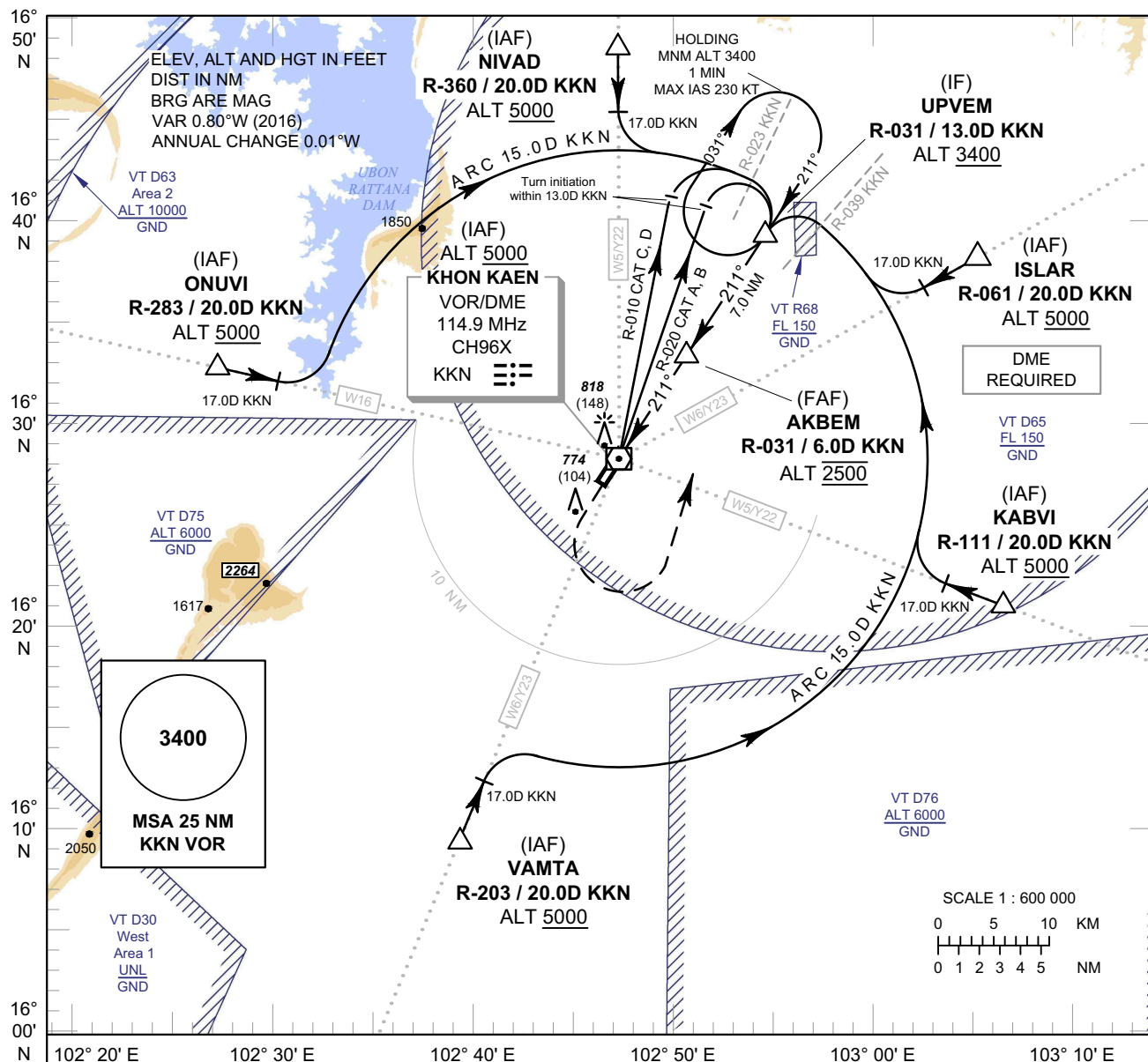


**INSTRUMENT  
APPROACH  
CHART - ICAO**

**AERODROME ELEV 670 FT  
HEIGHTS RELATED TO  
THR RWY21 - ELEV 670 FT**

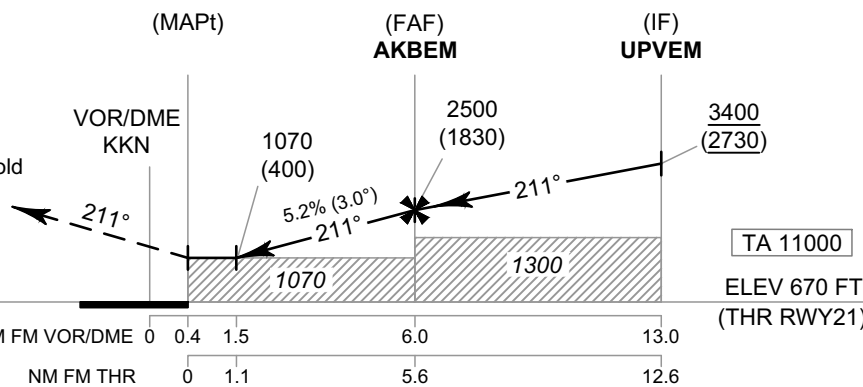
APP : 123.4 , 240.0  
TWR : 122.25 , 236.6  
GND : 121.9  
ATIS : 126.85

**KHON KAEN /  
Khon Kaen (VTUK)  
VOR RWY21**



**MISSED APPROACH :**

**No turn before MAPt.**  
Climb straight ahead to 1500 FT,  
then turn left to intercept outbound  
R-031 KKN VOR and proceed to  
UPVEM at minimum 3400 FT and hold  
or as directed by ATC.



OCA/H	A	B	C	D	Distance (KKN)	1.5 D	2 D	3 D	4 D	5 D	FAF	
Straight-in Approach	1070 (400)				Altitude (Height)	1070 (400)	1225 (555)	1540 (870)	1855 (1185)	2175 (1505)	2500 (1830)	
					Ground Speed	knot	70	90	100	120	140	160
Circling (OCH AAL)	1500 (830)				Rate of Descent 5.2%	ft/min	369	474	527	632	737	843

CHANGE: ROUTE Y22, Y23 ADDED.

**INSTRUMENT  
APPROACH  
CHART - ICAO**

**AERODROME ELEV 670 FT  
HEIGHTS RELATED TO  
THR RWY21 - ELEV 670 FT**

**KHON KAEN /  
Khon Kaen (VTUK)  
VOR RWY21**

FIX/POINT		COORDINATES	
(IAF) ISLAR	R-061 / 20.0D KKN	16° 38' 15.95" N	103° 05' 18.75" E
(IAF) KABVI	R-111 / 20.0D KKN	16° 21' 16.12" N	103° 06' 46.71" E
(IAF) VAMTA	R-203 / 20.0D KKN	16° 09' 38.08" N	102° 39' 27.17" E
(IAF) ONUVI	R-283 / 20.0D KKN	16° 32' 28.21" N	102° 26' 55.02" E
(IAF) NIVAD	R-360 / 20.0D KKN	16° 48' 19.55" N	102° 46' 59.27" E
(IF) UPVEM	R-031 / 13.0D KKN	16° 39' 33.86" N	102° 54' 00.59" E
(FAF) AKBEM	R-031 / 6.0D KKN	16° 33' 28.20" N	102° 50' 22.67" E
(MAPt) UK921	R-031 / 0.4D KKN	16° 28' 35.98" N	102° 47' 28.71" E
(IAF) VOR	KKN	16° 28' 14.73" N	102° 47' 16.07" E

CHANGE: REVISED CHART.

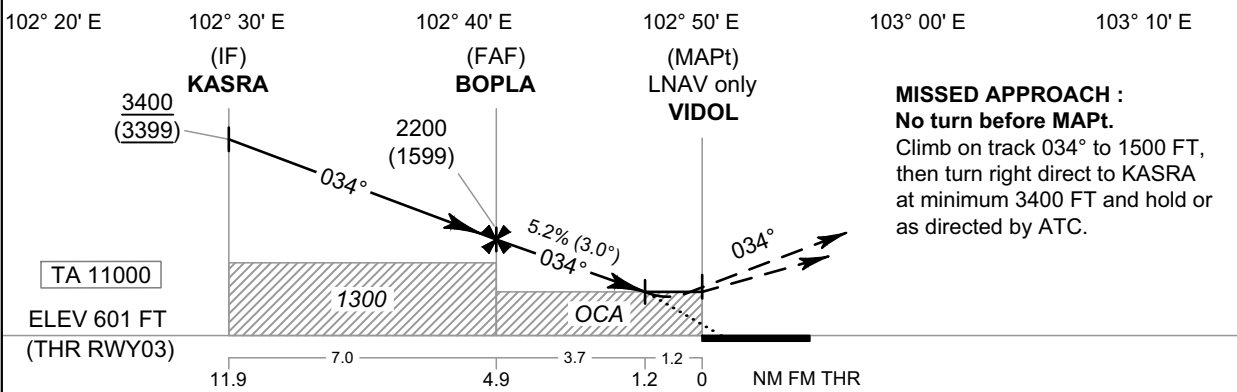
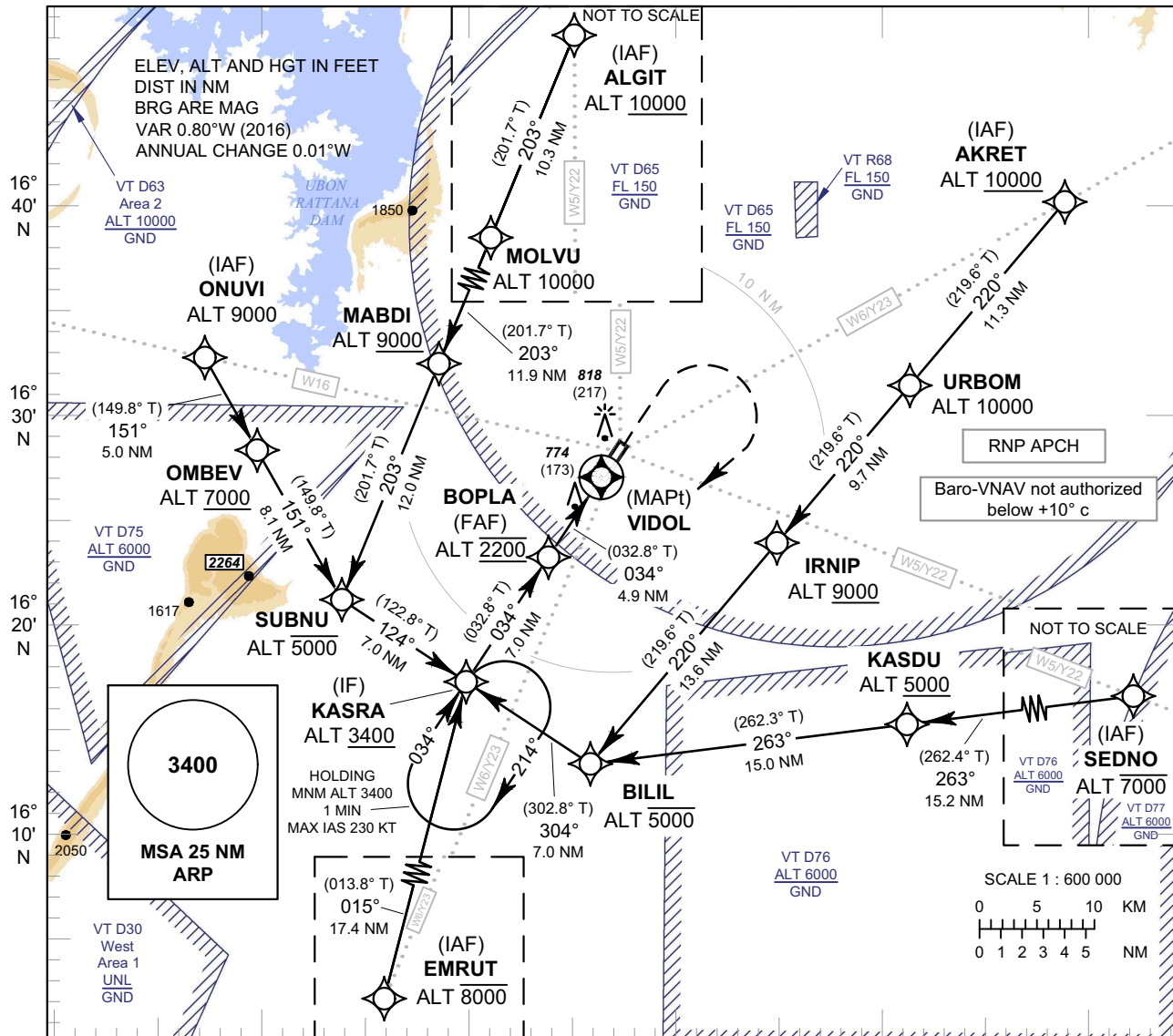


**INSTRUMENT  
APPROACH  
CHART - ICAO**

**AERODROME ELEV 670 FT  
HEIGHTS RELATED TO  
THR RWY03 - ELEV 601 FT**

APP : 123.4 , 240.0  
TWR : 122.25 , 236.6  
GND : 121.9  
ATIS : 126.85

**KHON KAEN /  
Khon Kaen (VTUK)  
RNP RWY03**



CHANGE: ROUTE Y22, Y23 ADDED.

OCA/H	A	B	C	D	NM to NEXT WPT	FAF	4 NM	3 NM	2 NM	1.2NM		
LNAV / VNAV	960 (359)				Altitude (Height)	2200 (1599)	1915 (1314)	1600 (999)	1280 (679)	1030 (429)		
LNAV	1090 (489)				Ground Speed	knot	70	90	100	120	140	160
Circling (OCH AAL)	1500 (830)				Rate of Descent	ft/min	369	474	527	632	737	843

**INSTRUMENT  
APPROACH  
CHART - ICAO**

**AERODROME ELEV 670 FT  
HEIGHTS RELATED TO  
THR RWY03 - ELEV 601 FT**

**KHON KAEN /  
Khon Kaen (VTUK)  
RNP RWY03**

**TABULAR DESCRIPTION**

RNP RWY03											
Serial Number	Path Descriptor	Waypoint Identifier	Flyover	Course ° M (° T)	Magnetic Variation	Distance (NM)	Turn Direction	Altitude (FT)	Speed (KT)	VPA/ TCH	Navigation Specification
010	IF	(IAF) AKRET	-	-	+ 0.84	-	-	+10000	-	-	RNP APCH
020	TF	URBOM	-	220°(219.6°)	+ 0.84	11.3	-	@10000	-	-	RNP APCH
030	TF	IRNIP	-	220°(219.6°)	+ 0.84	9.7	-	+9000	-	-	RNP APCH
040	TF	BILIL	-	220°(219.6°)	+ 0.84	13.6	-	-5000	-	-	RNP APCH
050	TF	(IF) KASRA	-	304°(302.8°)	+ 0.84	7.0	-	+3400	-	-	RNP APCH
010	IF	(IAF) SEDNO	-	-	+ 0.84	-	-	-7000	-	-	RNP APCH
020	TF	KASDU	-	263°(262.4°)	+ 0.84	15.2	-	+5000	-	-	RNP APCH
030	TF	BILIL	-	263°(262.3°)	+ 0.84	15.0	-	-5000	-	-	RNP APCH
040	TF	(IF) KASRA	-	304°(302.8°)	+ 0.84	7.0	-	+3400	-	-	RNP APCH
010	IF	(IAF) EMRUT	-	-	+ 0.84	-	-	-8000	-	-	RNP APCH
020	TF	(IF) KASRA	-	015°(013.8°)	+ 0.84	17.4	-	+3400	-	-	RNP APCH
010	IF	(IAF) ONUVI	-	-	+ 0.84	-	-	@9000	-	-	RNP APCH
020	TF	OMBEV	-	151°(149.8°)	+ 0.84	5	-	+ 7000	-	-	RNP APCH
030	TF	SUBNU	-	151°(149.8°)	+ 0.84	8.1	-	-5000	-	-	RNP APCH
040	TF	(IF) KASRA	-	124°(122.8°)	+ 0.84	7.0	-	+3400	-	-	RNP APCH
010	IF	(IAF) ALGIT	-	-	+ 0.84	-	-	+10000	-	-	RNP APCH
020	TF	MOLVU	-	203°(201.7°)	+ 0.84	10.3	-	@10000	-	-	RNP APCH
030	TF	MABDI	-	203°(201.7°)	+ 0.84	11.9	-	+ 9000	-	-	RNP APCH
040	TF	SUBNU	-	203°(201.7°)	+ 0.84	12.0	-	-5000	-	-	RNP APCH
050	TF	(IF) KASRA	-	124°(122.8°)	+ 0.84	7.0	-	+3400	-	-	RNP APCH
010	IF	(IF) KASRA	-	-	+ 0.84	-	-	+3400	-	-	RNP APCH
020	TF	(FAF) BOPLA	-	034°(032.8°)	+ 0.84	7.0	-	@2200	-	-	RNP APCH
030	TF	(MAPt @ THR03) VIDOL	Y	034°(032.8°)	+ 0.84	4.9	-	@651	-	-3.0/50	RNP APCH
040	CA	-	-	-	+ 0.84	-	-	+1500	-	-	RNP APCH
050	DF	(IF) KASRA	-	034°(032.8°)	+ 0.84	-	R	+3400	-	-	RNP APCH
060	HM	(IF) KASRA	Y	034°(032.8°)	+ 0.84	1 minute	R	+3400	-	-	RNP APCH

CHANGE : KASRA ALT.

**INSTRUMENT  
APPROACH  
CHART - ICAO**

**AERODROME ELEV 670 FT  
HEIGHTS RELATED TO  
THR RWY03 - ELEV 601 FT**

**KHON KAEN /  
Khon Kaen (VTUK)  
RNP RWY03**

**WAYPOINT LIST**

<b>RNP RWY03</b>	
Waypoint Identifier	Coordinates
AKRET	16° 40' 16.00" N 103° 08' 55.51" E
ALGIT	16° 52' 59.94" N 102° 46' 54.83" E
BILIL	16° 13' 30.10" N 102° 45' 59.70" E
BOPLA	16° 23' 14.18" N 102° 43' 50.23" E
EMRUT	16° 00' 19.64" N 102° 35' 33.26" E
IRNIP	16° 24' 01.90" N 102° 55' 00.02" E
KASDU	16° 15' 31.42" N 103° 01' 26.79" E
KASRA	16° 17' 18.69" N 102° 39' 52.88" E
MABDI	16° 32' 18.99" N 102° 38' 22.37" E
MOLVU	16° 43' 23.43" N 102° 42' 56.51" E
OMBEV	16° 28' 07.88" N 102° 29' 32.12" E
ONUVI	16° 32' 28.21" N 102° 26' 55.02" E
SEDNO	16° 17' 33.31" N 103° 17' 07.18" E
SUBNU	16° 21' 07.11" N 102° 33' 45.75" E
URBOM	16° 31' 31.58" N 103° 01' 25.31" E
VIDOL	16° 27' 22.26" N 102° 46' 36.04" E

CHANGE: NEW CHART.

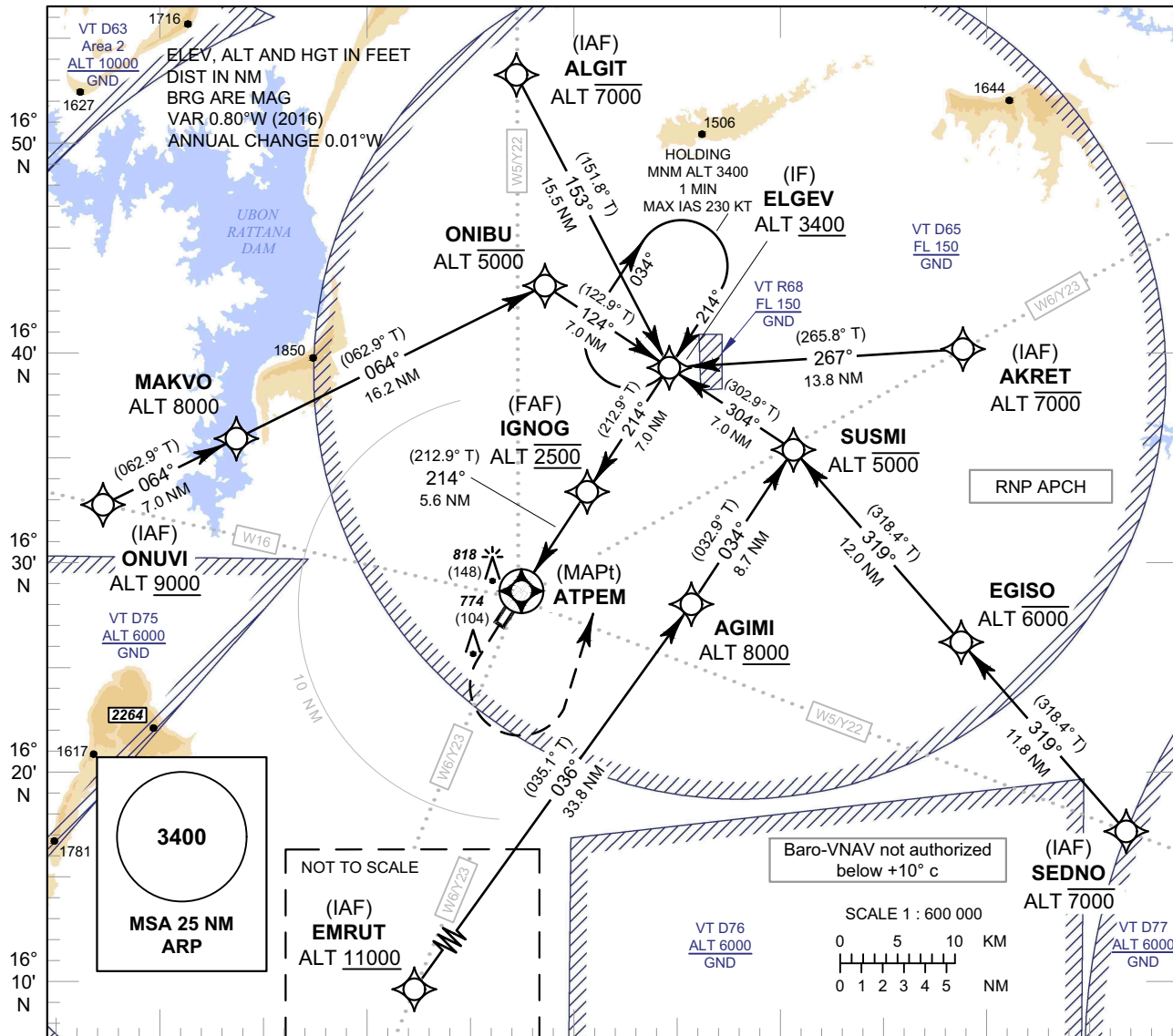
**INTENTIONALLY BLANK**

**INSTRUMENT  
APPROACH  
CHART - ICAO**

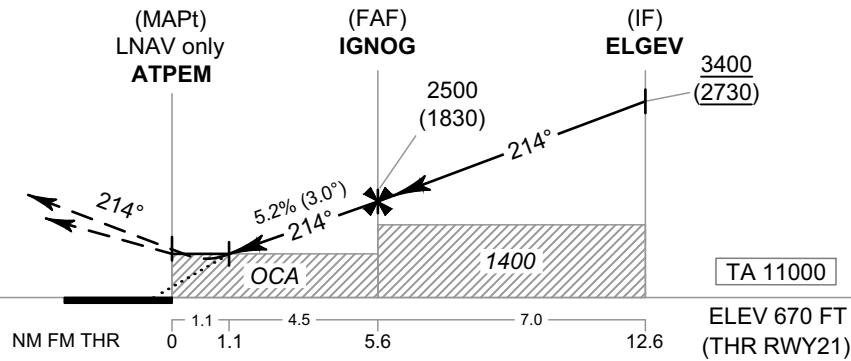
**AERODROME ELEV 670 FT  
HEIGHTS RELATED TO  
THR RWY21 - ELEV 670 FT**

APP : 123.4 , 240.0  
TWR : 122.25 , 236.6  
GND : 121.9  
ATIS : 126.85

**KHON KAEN /  
Khon Kaen (VTUK)  
RNP RWY21**



**MISSED APPROACH :**  
**No turn before MAPt.**  
Climb on track 214° to 1500 FT,  
then turn left direct to ELGEV  
at minimum 3400 FT and hold or  
as directed by ATC.



CHANGE: ROUTE Y22, Y23 ADDED.

OCA/H	A	B	C	D	NM to NEXT WPT	1.1 NM	2 NM	3 NM	4 NM	5 NM	FAF	
LNAV / VNAV	1000 (330)				Altitude (Height)	1070 (400)	1350 (680)	1665 (995)	1985 (1315)	2300 (1630)	2500 (1830)	
LNAV	1070 (400)				Ground Speed	knot	70	90	100	120	140	160
Circling (OCH AAL)	1500 (830)				Rate of Descent	ft/min	369	474	527	632	737	843

**INSTRUMENT  
APPROACH  
CHART - ICAO**

**AERODROME ELEV 670 FT  
HEIGHTS RELATED TO  
THR RWY21 - ELEV 670 FT**

**KHON KAEN /  
Khon Kaen (VTUK)  
RNP RWY21**

**TABULAR DESCRIPTION**

RNP RWY21											
Serial Number	Path Descriptor	Waypoint Identifier	Flyover	Course ° M (° T)	Magnetic Variation	Distance (NM)	Turn Direction	Altitude (FT)	Speed (KT)	VPA/ TCH	Navigation Specification
010	IF	(IAF) EMRUT	-	-	+ 0.84	-	-	+11000	-	-	RNP APCH
020	TF	AGIMI	-	036°(035.1°)	+ 0.84	33.8	-	+8000	-	-	RNP APCH
030	TF	SUSMI	-	034°(032.9°)	+ 0.84	8.7	-	-5000	-	-	RNP APCH
040	TF	(IF) ELGEV	-	304°(302.9°)	+ 0.84	7.0	-	+3400	-	-	RNP APCH
010	IF	(IAF) SEDNO	-	-	+ 0.84	-	-	-7000	-	-	RNP APCH
020	TF	EGISO	-	319°(318.4°)	+ 0.84	11.8	-	-6000	-	-	RNP APCH
030	TF	SUSMI	-	319°(318.4°)	+ 0.84	12.0	-	-5000	-	-	RNP APCH
040	TF	(IF) ELGEV	-	304°(302.9°)	+ 0.84	7.0	-	+3400	-	-	RNP APCH
010	IF	(IAF) AKRET	-	-	+ 0.84	-	-	-7000	-	-	RNP APCH
020	TF	(IF) ELGEV	-	267°(265.8°)	+ 0.84	13.8	-	+3400	-	-	RNP APCH
010	IF	(IAF) ALGIT	-	-	+ 0.84	-	-	-7000	-	-	RNP APCH
020	TF	(IF) ELGEV	-	153°(151.8°)	+ 0.84	15.5	-	+3400	-	-	RNP APCH
010	IF	(IAF) ONUVI	-	-	+ 0.84	-	-	+9000	-	-	RNP APCH
020	TF	MAKVO	-	064°(064.9°)	+ 0.84	7.0	-	@8000	-	-	RNP APCH
030	TF	ONIBU	-	064°(062.9°)	+ 0.84	16.2	-	-5000	-	-	RNP APCH
040	TF	(IF) ELGEV	-	124°(122.9°)	+ 0.84	7.0	-	+3400	-	-	RNP APCH
010	IF	(IF) ELGEV	-	-	+ 0.84	-	-	+3400	-	-	RNP APCH
020	TF	(FAF) IGNOG	-	214°(212.9°)	+ 0.84	7.0	-	@2500	-	-	RNP APCH
030	TF	(MAPt @ THR21) ATPEM	Y	214°(212.9°)	+ 0.84	5.6	-	@720	-	-3.0/50	RNP APCH
040	CA	-	-	-	+ 0.84	-	-	+1500	-	-	RNP APCH
050	DF	(IF) ELGEV	-	214°(212.9°)	+ 0.84	-	L	+3400	-	-	RNP APCH
060	HM	(IF) ELGEV	Y	214°(212.9°)	+ 0.84	1 minute	R	+3400	-	-	RNP APCH

CHANGE: REVISED CHART.

**INSTRUMENT  
APPROACH  
CHART - ICAO**

**AERODROME ELEV 670 FT  
HEIGHTS RELATED TO  
THR RWY21 - ELEV 670 FT**

**KHON KAEN /  
Khon Kaen (VTUK)  
RNP RWY21**

**WAYPOINT LIST**

<b>RNP RWY21</b>	
Waypoint Identifier	Coordinates
AGMI	16° 28' 05.65" N 102° 55' 45.34" E
AKRET	16° 40' 16.00" N 103° 08' 55.51" E
ALGIT	16° 52' 59.94" N 102° 46' 54.83" E
ATPEM	16° 28' 37.46" N 102° 47' 26.33" E
EGISO	16° 26' 25.36" N 103° 08' 58.18" E
ELGEV	16° 39' 14.85" N 102° 54' 33.11" E
EMRUT	16° 00' 19.64" N 102° 35' 33.26" E
IGNOG	16° 33' 20.92" N 102° 50' 36.01" E
MAKVO	16° 35' 40.27" N 102° 33' 24.33" E
ONIBU	16° 43' 03.71" N 102° 48' 25.59" E
ONUVI	16° 32' 28.21" N 102° 26' 55.02" E
SEDNO	16° 17' 33.31" N 103° 17' 07.18" E
SUSMI	16° 35' 25.80" N 103° 00' 40.39" E

CHANGE: NEW CHART.

**INTENTIONALLY BLANK**

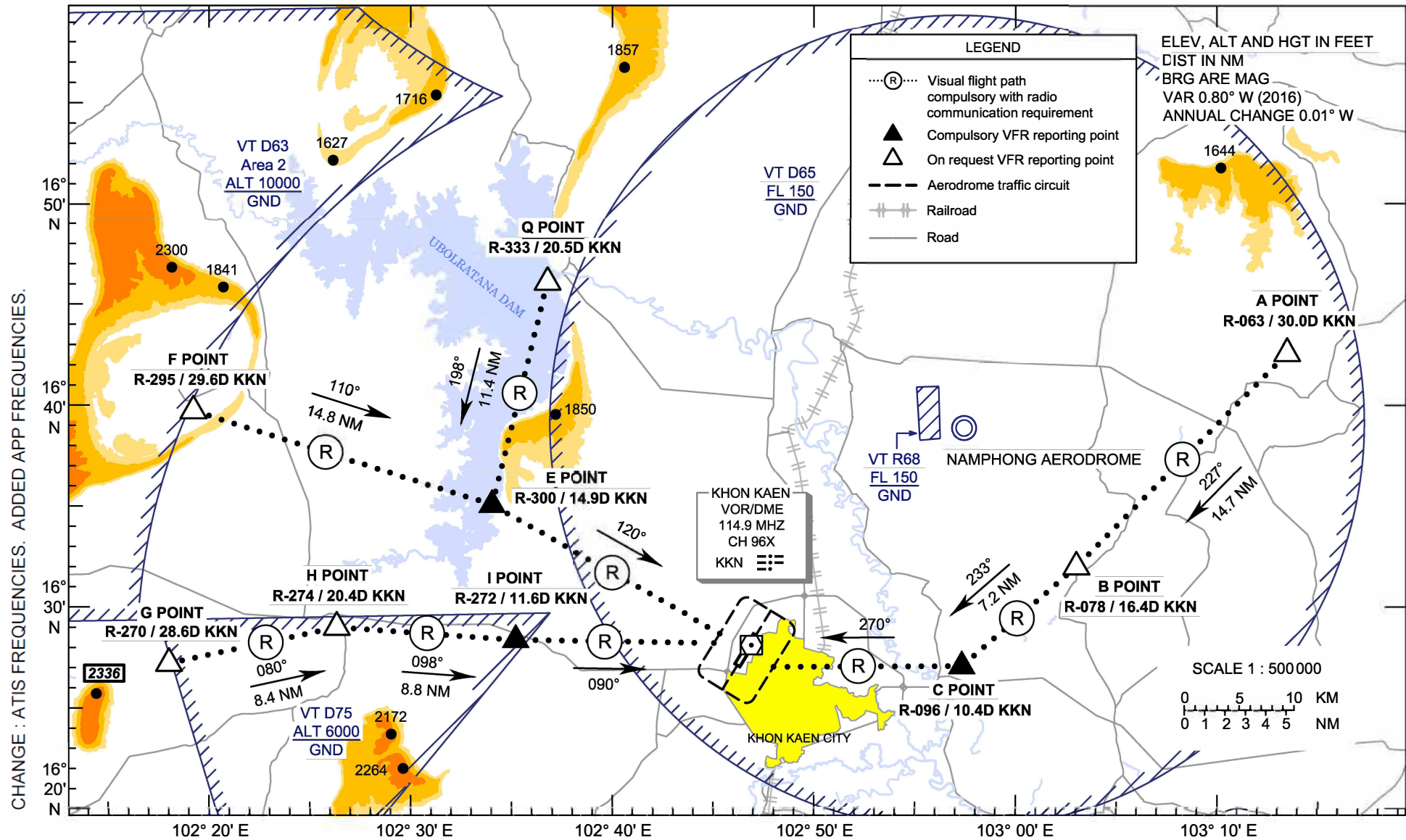


**VFR ENTRY  
PROCEDURE  
CHART**

**AERODROME ELEV 670 FT  
HEIGHTS RELATED TO  
AERODROME ELEV**

APP : 123.4, 240.0  
TWR : 122.25, 236.6  
GND : 121.9  
ATIS : 126.85

**KHON KAEN /  
Khon Kaen (VTUK)  
RWY03/21  
(NORTH)**



**VFR ENTRY  
PROCEDURE  
CHART**

**AERODROME ELEV 670 FT  
HEIGHTS RELATED TO  
AERODROME ELEV**

**KHON KAEN /  
Khon Kaen (VTUK)  
RWY03/21  
(NORTH)**

**ARR-RWY03/21 (From North)**

Inbound via Q POINT then heading 198° to E POINT and heading 120° to over aerodrome. Join aerodrome traffic circuit when directed by ATC.

**ARR-RWY03/21 (From North-West)**

Inbound via F POINT then heading 110° to E POINT and heading 120° to over aerodrome. Join aerodrome traffic circuit when directed by ATC.

**ARR-RWY03/21 (From West)**

Inbound via G POINT then heading 080° to H POINT, heading 098° to I POINT, and heading 090° to over aerodrome. Join aerodrome traffic circuit when directed by ATC.

**ARR-RWY03/21 (From North-East)**

Inbound via A POINT with recommended altitude at or above 2000 ft then heading 227° to B POINT, heading 233° to C POINT, and heading 270° to over aerodrome. Join aerodrome traffic circuit when directed by ATC.

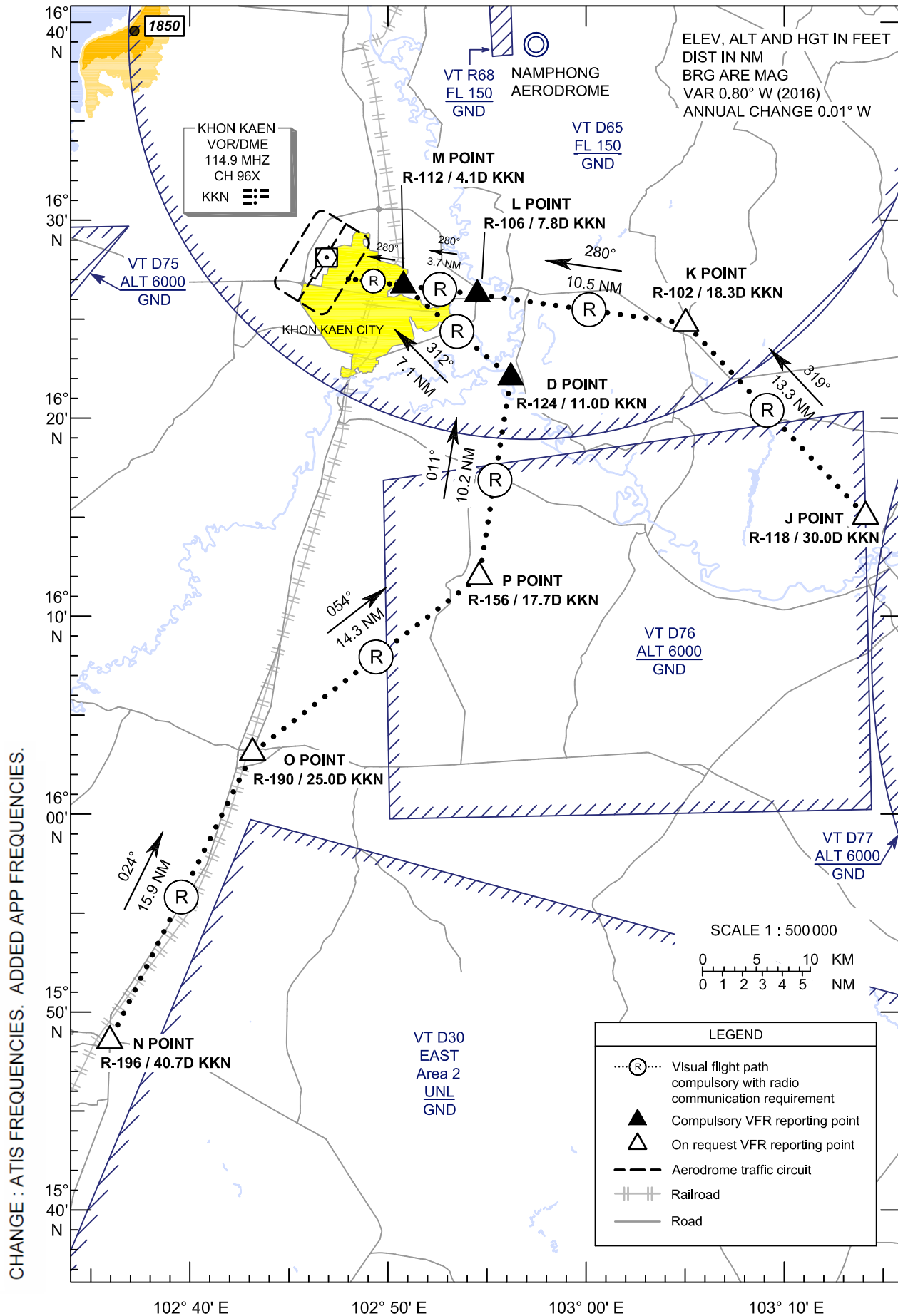
Reporting points	Landmark	Radial / DME from KKN VOR	Coordinates	
			Latitude	Longitude
"A" or ALPHA Point	Ban Nong Chum Sang Temple	R-063 / 30.0D	16° 42' 06.00" N	103° 14' 58.00" E
"B" or BRAVO Point	Sam Sung Police Station	R-078 / 16.4D	16° 31' 47.02" N	103° 03' 58.55" E
"C" or CHARLIE Point	White Pagoda	R-096 / 10.4D	16° 27' 19.00" N	102° 58' 03.40" E
"E" or ECHO Point	Sa Wang Cherng Khao Temple	R-300 / 14.9D	16° 35' 27.07" N	102° 33' 41.30" E
"F" or FOXTROT Point	Phu Wiang Hill	R-295 / 29.6D	16° 40' 20.37" N	102° 19' 07.91" E
"G" or GOLF Point	Ei San Temple (Road Intersection)	R-270 / 28.6D	16° 27' 51.90" N	102° 17' 29.80" E
"H" or HOTEL Point	Nhong Reua (Road Intersection)	R-274 / 20.4D	16° 29' 29.60" N	102° 26' 06.20" E
"I" or INDIA Point	Khon Kaen 4 Power Plant	R-272 / 11.6D	16° 28' 26.70" N	102° 35' 12.40" E
"Q" or QUEBEC Point	Au Bon Rat Dam	R-333 / 20.5D	16° 46' 20.20" N	102° 37' 11.90" E
KHON KAEN VOR/DME (KKN)	KHON KAEN VOR/DME Station	-	16° 28' 14.73" N	102° 47' 16.07" E

CHANGE: NEW CHART.

**VFR ENTRY PROCEDURE CHART**  
**AERODROME ELEV 670 FT**  
 HEIGHTS RELATED TO  
 AERODROME ELEV

APP : 123.4, 240.0  
 TWR : 122.25, 236.6  
 GND : 121.9  
 ATIS : 126.85

**KHON KAEN /  
 Khon Kaen (VTUK)  
 RWY03/21  
 (SOUTH)**



**VFR ENTRY  
PROCEDURE  
CHART**

**AERODROME ELEV 670 FT  
HEIGHTS RELATED TO  
AERODROME ELEV**

**KHON KAEN /  
Khon Kaen (VTUK)  
RWY03/21  
(SOUTH)**

**ARR-RWY03/21 (From East)**

Inbound via J POINT then heading 319° to K POINT, heading 280° to L POINT, heading 280° to M POINT, and heading 280° to over aerodrome. Join aerodrome traffic circuit when directed by ATC.

**ARR-RWY03/21 (From South)**

Inbound via N POINT then heading 024° to O POINT, heading 054° to P POINT, heading 011° to D POINT, heading 312° to M POINT, and heading 280° to over aerodrome. Join aerodrome traffic circuit when directed by ATC.

Reporting points	Landmark	Radial / DME from KKN VOR	Coordinates	
			Latitude	Longitude
"D" or DELTA Point	Wang Yang Weir	R-124 / 11.0D	16° 22' 07.00" N	102° 56' 50.60" E
"J" or JULIETT Point	Ma Ha Sa Ra Kham University	R-118 / 30.0D	16° 14' 33.17" N	103° 15' 03.57" E
"K" or KILO Point	Chiang Yeun	R-102 / 18.3D	16° 24' 35.30" N	103° 05' 53.00" E
"L" or LIMA Point	Bridge	R-106 / 7.8D	16° 26' 13.03" N	102° 55' 04.32" E
"M" or MIKE Point	Beung Thung Sang Park	R-112 / 4.1D	16° 26' 47.42" N	102° 51' 15.09" E
"N" or NOVEMBER Point	Mueang Pol	R-196 / 40.7D	15° 48' 44.90" N	102° 36' 26.90" E
"O" or OSCAR Point	Ban Phai (Road Intersection)	R-190 / 25.0D	16° 03' 27.30" N	102° 42' 57.50" E
"P" or PAPA Point	Khon Sak Creek	R-156 / 17.7D	16° 12' 04.70" N	102° 54' 53.80" E
KHON KAEN VOR/DME (KKN)	KHON KAEN VOR/DME Station	-	16° 28' 14.73" N	102° 47' 16.07" E

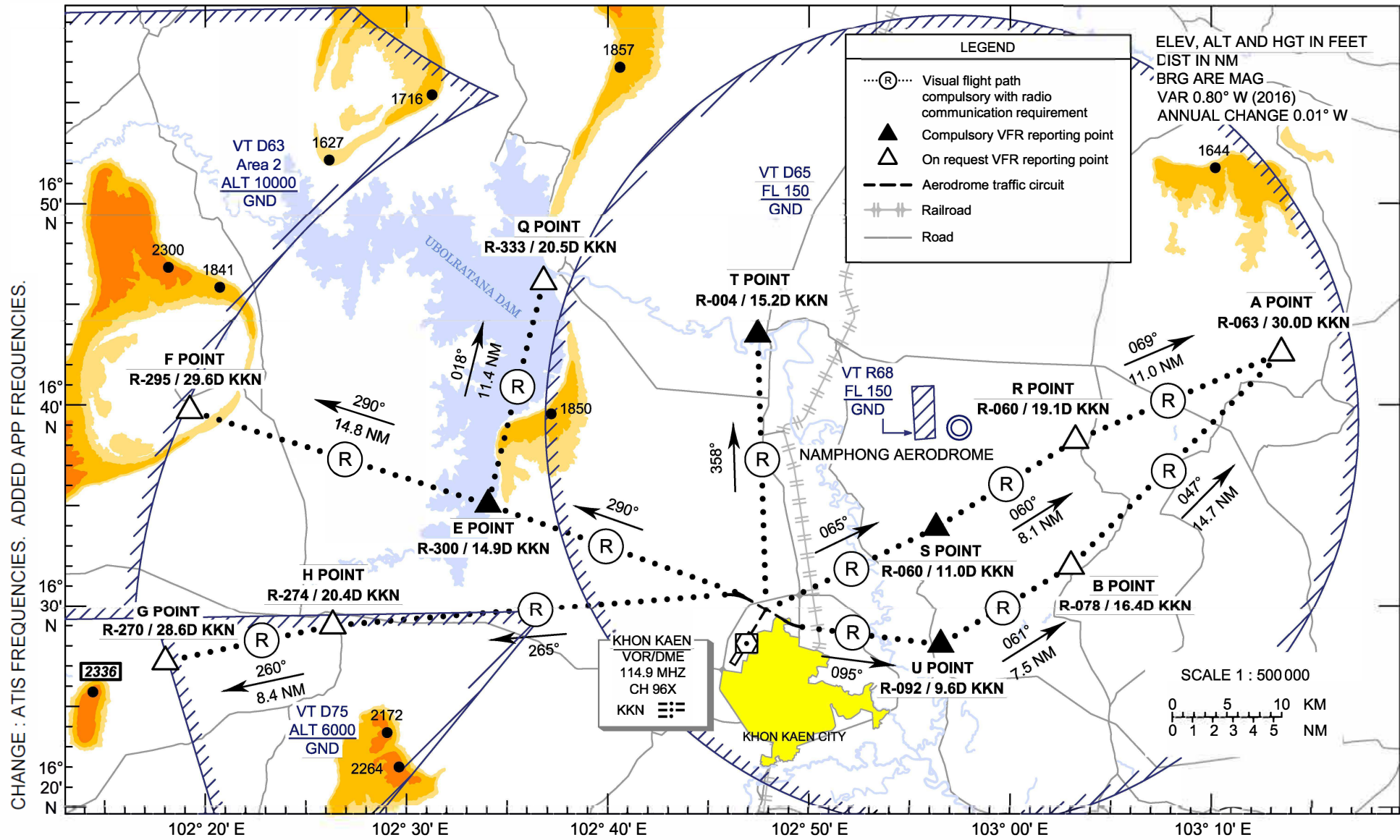
CHANGE: NEW CHART.

**VFR EXIT  
PROCEDURE  
CHART**

**AERODROME ELEV 670 FT  
HEIGHTS RELATED TO  
AERODROME ELEV**

APP : 123.4, 240.0  
TWR : 122.25, 236.6  
GND : 121.9  
ATIS : 126.85

**KHON KAEN /  
Khon Kaen (VTUK)  
RWY03  
(NORTH)**



**VFR EXIT  
PROCEDURE  
CHART**

**AERODROME ELEV 670 FT**  
HEIGHTS RELATED TO  
AERODROME ELEV

**KHON KAEN /  
Khon Kaen (VTUK)  
RWY03  
(NORTH)**

**DEP-RWY03 (North)**

After departure climb to altitude 500 ft then heading 358° to T POINT.

**DEP-RWY03 (North)**

After departure turn left proceed westbound (heading 300°) until 2.5 DME then heading 290° to E POINT, and heading 018° to Q POINT.

**DEP-RWY03 (North-East)**

After departure turn right proceed eastbound (heading 120°) until 2.5 DME then heading 095° to U POINT, heading 061° to B POINT, and heading 047° to A POINT with recommended altitude at or above 2000 ft.

**DEP-RWY03 (North-East)**

After departure climb to altitude 500 ft then heading 065° to S POINT, heading 060° to R POINT, and heading 069° to A POINT with recommended altitude at or above 2000 ft.

**DEP-RWY03 (North-West)**

After departure turn left proceed westbound (heading 300°) until 2.5 DME then heading 290° to E POINT, and heading 290° to F POINT.

**DEP-RWY03 (West)**

After departure turn left proceed westbound (heading 300°) until 2.5 DME then heading 265° to H POINT, and heading 260° to G POINT.

Reporting points	Landmark	Radial / DME from KKN VOR	Coordinates	
			Latitude	Longitude
"A" or ALPHA Point	Ban Nong Chum Sang Temple	R-063 / 30.0D	16° 42' 06.00" N	103° 14' 58.00" E
"B" or BRAVO Point	Sam Sung Police Station	R-078 / 16.4D	16° 31' 47.02" N	103° 03' 58.55" E
"E" or ECHO Point	Sa Wang Cherng Khao Temple	R-300 / 14.9D	16° 35' 27.07" N	102° 33' 41.30" E
"F" or FOXTROT Point	Phu Wiang Hill	R-295 / 29.6D	16° 40' 20.37" N	102° 19' 07.91" E
"G" or GOLF Point	Ei San Temple (Road Intersection)	R-270 / 28.6D	16° 27' 51.90" N	102° 17' 29.80" E
"H" or HOTEL Point	Nhong Reua (Road Intersection)	R-274 / 20.4D	16° 29' 29.60" N	102° 26' 06.20" E
"Q" or QUEBEC Point	Au Bon Rat Dam	R-333 / 20.5D	16° 46' 20.20" N	102° 37' 11.90" E
"U" or UNIFORM Point	Pho Tha Ram Temple	R-092 / 9.6D	16° 28' 01.00" N	102° 57' 13.00" E
"R" or ROMEO Point	Nhong Krung Yai Village	R-060 / 19.1D	16° 37' 59.60" N	103° 04' 19.60" E
"S" or SIERRA Point	Phra That Kham Kaen	R-060 / 11.0D	16° 33' 49.00" N	102° 57' 06.00" E
"T" or TANGO Point	Bridge	R-004 / 15.2D	16° 43' 31.00" N	102° 48' 09.00" E
KHON KAEN VOR/DME (KKN)	KHON KAEN VOR/DME Station	-	16° 28' 14.73" N	102° 47' 16.07" E

CHANGE: NEW CHART.

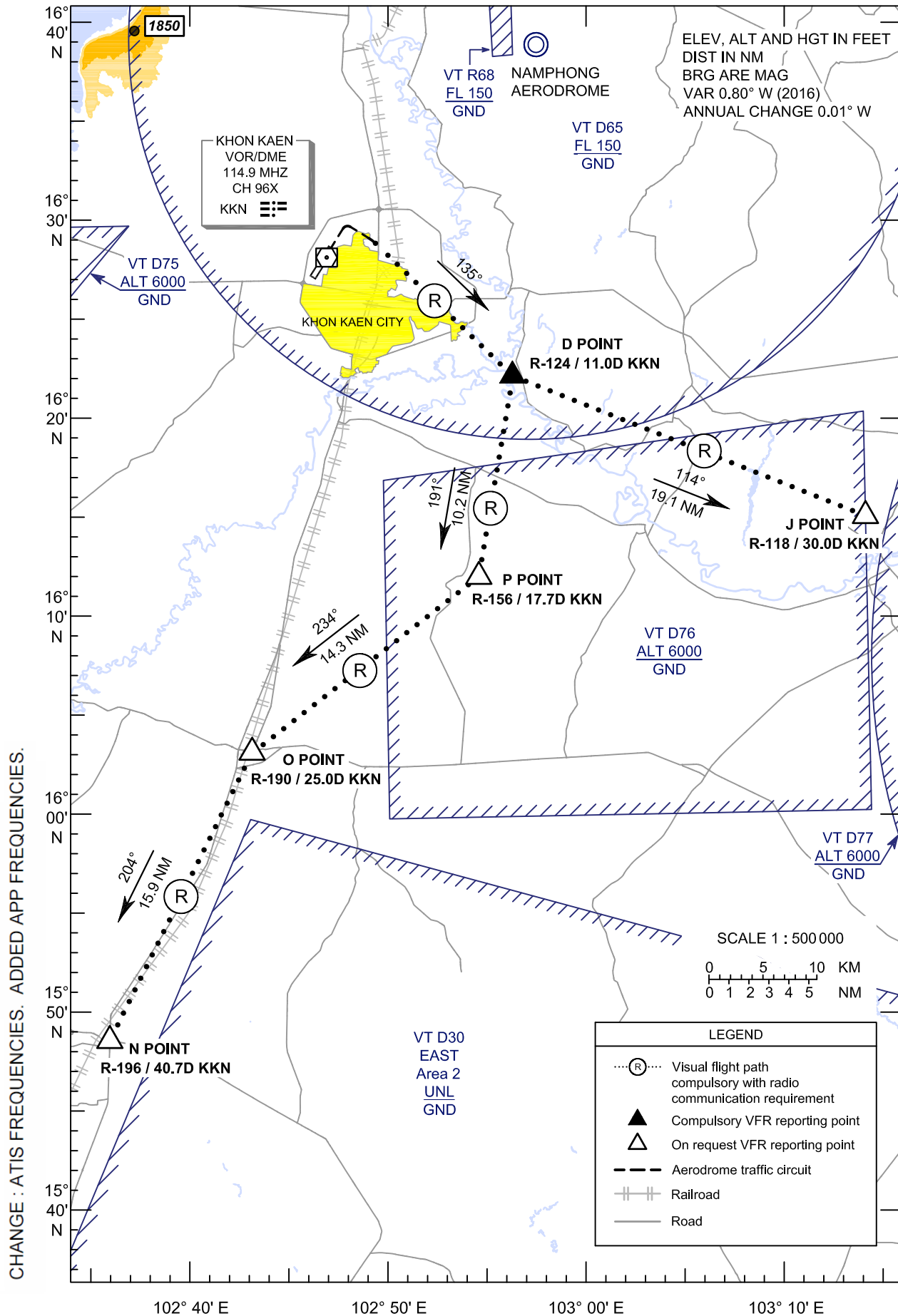


VFR EXIT  
PROCEDURE  
CHART

AERODROME ELEV 670 FT  
HEIGHTS RELATED TO  
AERODROME ELEV

APP : 123.4, 240.0  
TWR : 122.25, 236.6  
GND : 121.9  
ATIS : 126.85

**KHON KAEN /  
Khon Kaen (VTUK)  
RWY03  
(SOUTH)**



**VFR EXIT  
PROCEDURE  
CHART**

**AERODROME ELEV 670 FT  
HEIGHTS RELATED TO  
AERODROME ELEV**

**KHON KAEN /  
Khon Kaen (VTUK)  
RWY03  
(SOUTH)**

**DEP-RWY03 (South-East)**

After departure turn right proceed eastbound (heading 120°) until 2.5 DME then heading 135° to D POINT, and heading 114° to J POINT.

**DEP-RWY03 (South)**

After departure turn right proceed eastbound (heading 120°) until 2.5 DME then heading 135° to D POINT, heading 191° to P POINT, heading 234° to O POINT, and heading 204° to N POINT.

Reporting points	Landmark	Radial / DME from KKN VOR	Coordinates	
			Latitude	Longitude
"D" or DELTA Point	Wang Yang Weir	R-124 / 11.0D	16° 22' 07.00" N	102° 56' 50.60" E
"J" or JULIETT Point	Ma Ha Sa Ra Kham University	R-118 / 30.0D	16° 14' 33.17" N	103° 15' 03.57" E
"N" or NOVEMBER Point	Mueang Pol	R-196 / 40.7D	15° 48' 44.90" N	102° 36' 26.90" E
"O" or OSCAR Point	Ban Phai (Road Intersection)	R-190 / 25.0D	16° 03' 27.30" N	102° 42' 57.50" E
"P" or PAPA Point	Khon Sak Creek	R-156 / 17.7D	16° 12' 04.70" N	102° 54' 53.80" E
KHON KAEN VOR/DME (KKN)	KHON KAEN VOR/DME Station	-	16° 28' 14.73" N	102° 47' 16.07" E

CHANGE: NEW CHART.

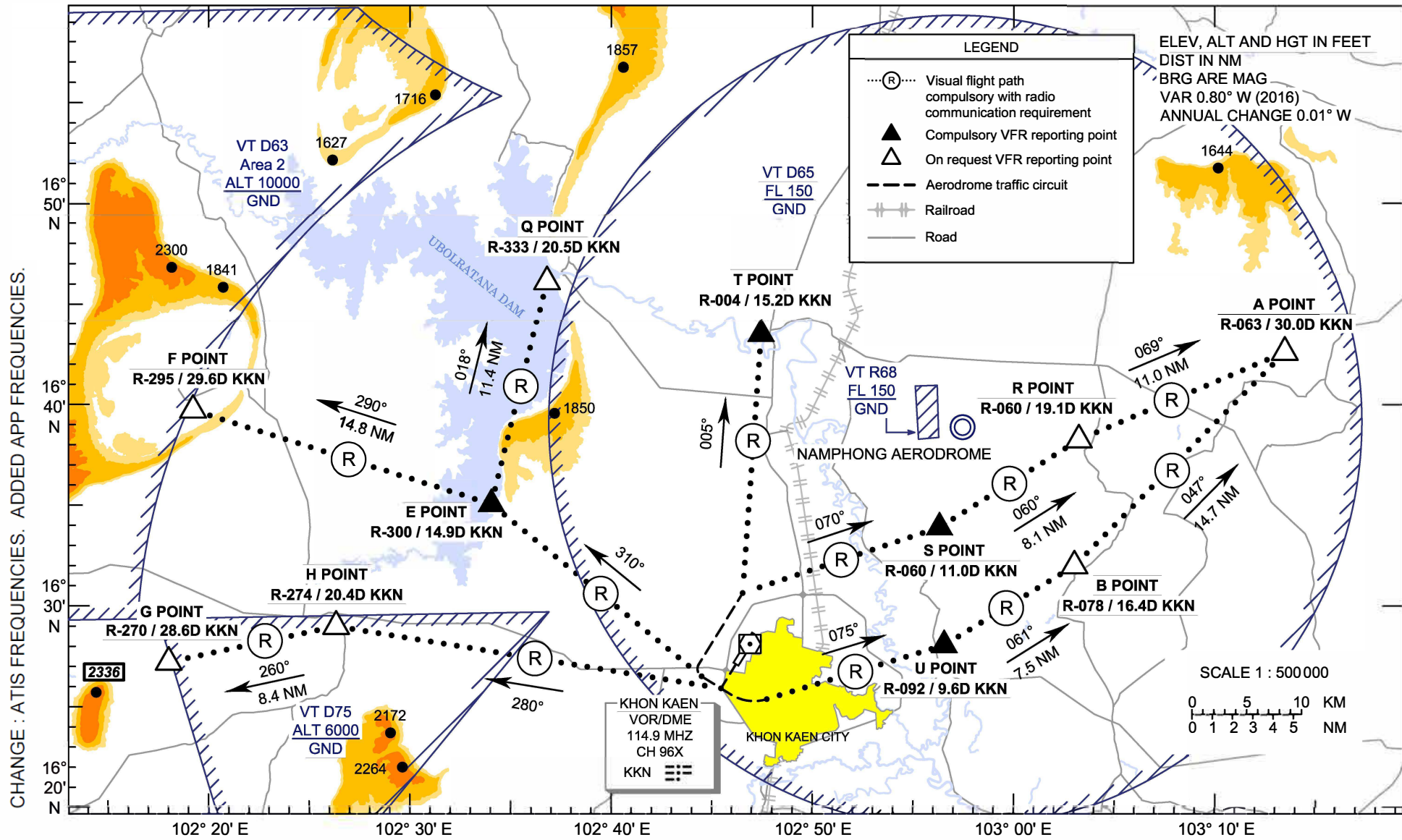


**VFR EXIT  
PROCEDURE  
CHART**

**AERODROME ELEV 670 FT  
HEIGHTS RELATED TO  
AERODROME ELEV**

APP : 123.4, 240.0  
TWR : 122.25, 236.6  
GND : 121.9  
ATIS : 126.85

**KHON KAEN /  
Khon Kaen (VTUK)  
RWY21  
(NORTH)**



**VFR EXIT  
PROCEDURE  
CHART**

**AERODROME ELEV 670 FT**  
HEIGHTS RELATED TO  
AERODROME ELEV

**KHON KAEN /  
Khon Kaen (VTUK)  
RWY21  
(NORTH)**

**DEP-RWY21 (North)**

After departure turn right proceed westbound (heading 300°) until 2.5 DME then turn right to join right downwind then heading 005° to T POINT.

**DEP-RWY21 (North)**

After departure turn right proceed westbound (heading 300°) until 2.5 DME then heading 310° to E POINT, and heading 018° to Q POINT.

**DEP-RWY21 (North-East)**

After departure turn left proceed eastbound (heading 120°) until 2.5 DME then heading 075° to U POINT, heading 061° to B POINT, and heading 047° to A POINT with recommended altitude at or above 2000 ft.

**DEP-RWY21 (North-East)**

After departure turn right proceed westbound (heading 300°) until 2.5 DME then turn right to join right downwind then heading 070° to S POINT, heading 060° to R POINT, and heading 069° to A POINT with recommended altitude at or above 2000 ft.

**DEP-RWY21 (North-West)**

After departure turn right proceed westbound (heading 300°) until 2.5 DME then heading 310° to E POINT, and heading 290° to F POINT.

**DEP-RWY21 (West)**

After departure climb to altitude 500 ft then heading 280° to H POINT, and heading 260° to G POINT.

Reporting points	Landmark	Radial / DME from KKN VOR	Coordinates	
			Latitude	Longitude
"A" or ALPHA Point	Ban Nong Chum Sang Temple	R-063 / 30.0D	16° 42' 06.00" N	103° 14' 58.00" E
"B" or BRAVO Point	Sam Sung Police Station	R-078 / 16.4D	16° 31' 47.02" N	103° 03' 58.55" E
"E" or ECHO Point	Sa Wang Cherng Khao Temple	R-300 / 14.9D	16° 35' 27.07" N	102° 33' 41.30" E
"F" or FOXTROT Point	Phu Wiang Hill	R-295 / 29.6D	16° 40' 20.37" N	102° 19' 07.91" E
"G" or GOLF Point	Ei San Temple (Road Intersection)	R-270 / 28.6D	16° 27' 51.90" N	102° 17' 29.80" E
"H" or HOTEL Point	Nhong Reua (Road Intersection)	R-274 / 20.4D	16° 29' 29.60" N	102° 26' 06.20" E
"Q" or QUEBEC Point	Au Bon Rat Dam	R-333 / 20.5D	16° 46' 20.20" N	102° 37' 11.90" E
"U" or UNIFORM Point	Pho Tha Ram Temple	R-092 / 9.6D	16° 28' 01.00" N	102° 57' 13.00" E
"R" or ROMEO Point	Nhong Krung Yai Village	R-060 / 19.1D	16° 37' 59.60" N	103° 04' 19.60" E
"S" or SIERRA Point	Phra That Kham Kaen	R-060 / 11.0D	16° 33' 49.00" N	102° 57' 06.00" E
"T" or TANGO Point	Bridge	R-004 / 15.2D	16° 43' 31.00" N	102° 48' 09.00" E
KHON KAEN VOR/DME (KKN)	KHON KAEN VOR/DME Station	-	16° 28' 14.73" N	102° 47' 16.07" E

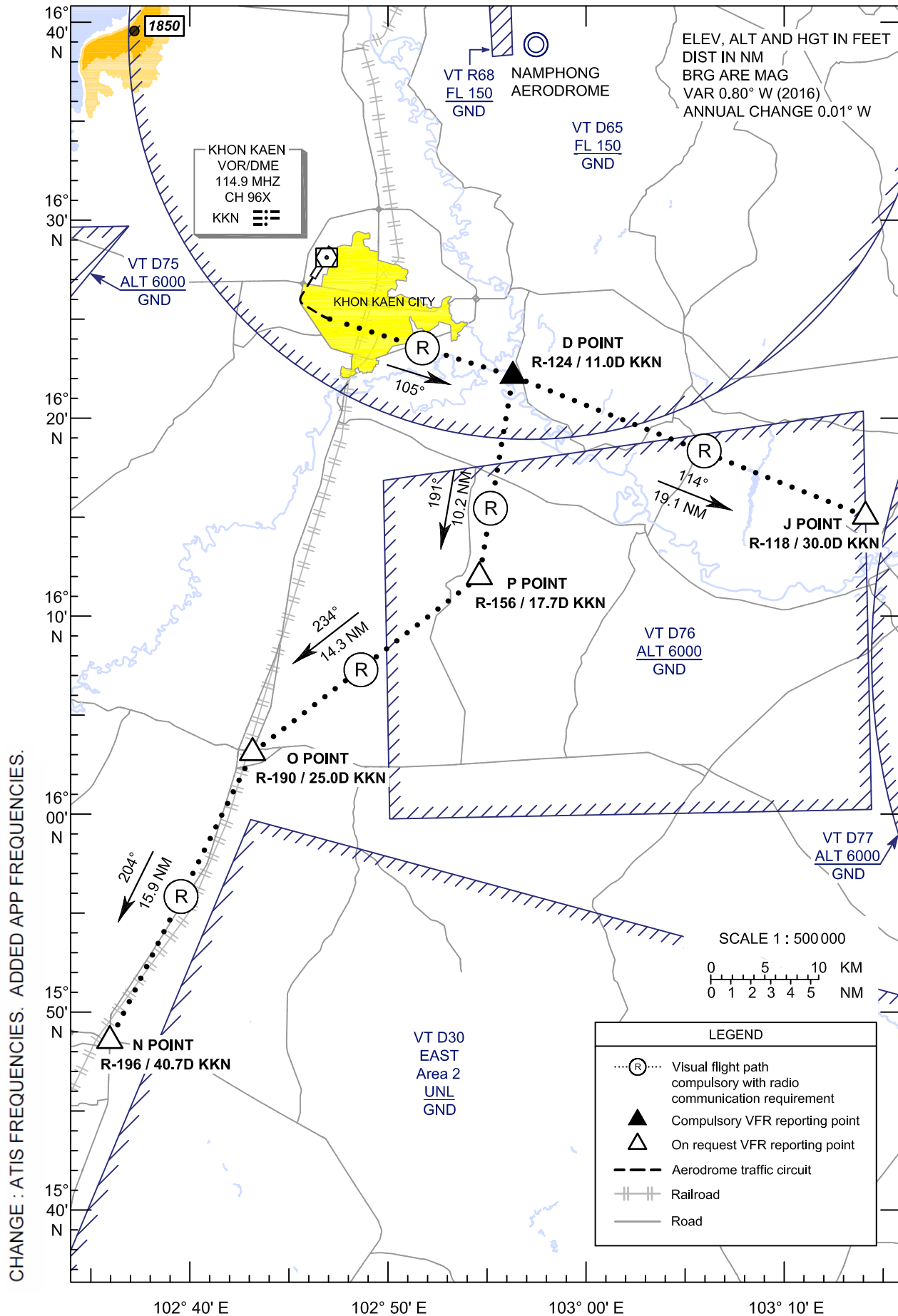
CHANGE: NEW CHART.

VFR EXIT  
PROCEDURE  
CHART

AERODROME ELEV 670 FT  
HEIGHTS RELATED TO  
AERODROME ELEV

APP : 123.4, 240.0  
TWR : 122.25, 236.6  
GND : 121.9  
ATIS : 126.85

**KHON KAEN /  
Khon Kaen (VTUK)  
RWY21  
(SOUTH)**



**VFR EXIT  
PROCEDURE  
CHART**

**AERODROME ELEV 670 FT  
HEIGHTS RELATED TO  
AERODROME ELEV**

**KHON KAEN /  
Khon Kaen (VTUK)  
RWY21  
(SOUTH)**

**DEP-RWY21 (South-East)**

After departure turn left proceed eastbound (heading 120°) until 2.5 DME then heading 105° to D POINT, and heading 114° to J POINT.

**DEP-RWY21 (South)**

After departure turn left proceed eastbound (heading 120°) until 2.5 DME then heading 105° to D POINT, heading 191° to P POINT, heading 234° to O POINT, and heading 204° to N POINT.

Reporting points	Landmark	Radial / DME from KKN VOR	Coordinates	
			Latitude	Longitude
"D" or DELTA Point	Wang Yang Weir	R-124 / 11.0D	16° 22' 07.00" N	102° 56' 50.60" E
"J" or JULIETT Point	Ma Ha Sa Ra Kham University	R-118 / 30.0D	16° 14' 33.17" N	103° 15' 03.57" E
"N" or NOVEMBER Point	Mueang Pol	R-196 / 40.7D	15° 48' 44.90" N	102° 36' 26.90" E
"O" or OSCAR Point	Ban Phai (Road Intersection)	R-190 / 25.0D	16° 03' 27.30" N	102° 42' 57.50" E
"P" or PAPA Point	Khon Sak Creek	R-156 / 17.7D	16° 12' 04.70" N	102° 54' 53.80" E
KHON KAEN VOR/DME (KKN)	KHON KAEN VOR/DME Station	-	16° 28' 14.73" N	102° 47' 16.07" E

CHANGE: NEW CHART.