

## VTUI AD 2.1 AERODROME LOCATION INDICATOR AND NAME

## VTUI - SAKON NAKHON / SAKON NAKHON AIRPORT

## VTUI AD 2.2 AERODROME GEOGRAPHICAL AND ADMINISTRATIVE DATA

|   |  |   |
|---|--|---|
| 1 | ARP coordinates and site at AD                             | 171142.51N 1040707.06E  |
| 2 | Direction and distance from (city)                         | 12 KM N from city   |
| 3 | Elevation/Reference temperature                            | 529 FT  |
| 4 | Geoid Undulation at AD ELEV PSN                            | NIL   |
| 5 | MAG VAR/Annual change                                      | 0.93°W(2016)/0.02°W   |
| 6 | AD Administration, address, telephone, telefax, telex, AFS | Director of Sakon Nakhon Airport<br>Sakon Nakhon Airport<br>Sakon Nakhon-Nakhon Phanom Road,<br>Thatnaweng, Mueang Sakon Nakhon,<br>Sakon Nakhon 47000<br>Thailand<br>Tel: +664 272 4044-5<br>Fax: +664 272 4041<br>AFS: VTUIYDYX |
| 7 | Types of traffic permitted (IFR/VFR)                       | IFR/VFR   |
| 8 | Remarks  | Operator: Department of Airports  |

## VTUI AD 2.3 OPERATIONAL HOURS

|    |                            |   |
|----|----------------------------|---|
| 1  | Aerodrome Operator         | 2300-1500   |
| 2  | Customs and immigration    | NIL   |
| 3  | Health and sanitation      | NIL   |
| 4  | AIS Briefing Office        | NIL   |
| 5  | ATS Reporting Office (ARO) | 2300-1500   |
| 6  | MET Briefing Office        | NIL   |
| 7  | ATS                        | 2300-1500   |
| 8  | Fuelling                   | NIL   |
| 9  | Handling                   | NIL   |
| 10 | Security                   | NIL   |
| 11 | De-icing                   | NIL   |
| 12 | Remarks                    | ATS Reporting Office (ARO):<br>Located at Udon Thani Air Traffic Control Centre (1st floor of tower building)<br>Tel: +664 223 0124<br>+669 2262 3477<br>Fax: +664 224 2797 |

**VTUI AD 2.4 HANDLING SERVICES AND FACILITIES**

|   |   |     |
|---|---|-----|
| 1 | Cargo-handling facilities               | NIL |
| 2 | Fuel/oil types                          | NIL |
| 3 | Fuelling facilities/capacity            | NIL |
| 4 | De-icing facilities                     | NIL |
| 5 | Hangar space for visiting aircraft      | NIL |
| 6 | Repair facilities for visiting aircraft | NIL |
| 7 | Remarks                                 | NIL |

**VTUI AD 2.5 PASSENGER FACILITIES**

|   |                      |                          |
|---|----------------------|--------------------------|
| 1 | Hotels               | In the city              |
| 2 | Restaurants          | In the city              |
| 3 | Transportation       | Limousine and Car rental |
| 4 | Medical facilities   | Hospital in the city     |
| 5 | Bank and Post Office | NIL                      |
| 6 | Tourist Office       | NIL                      |
| 7 | Remarks              | NIL                      |

**VTUI AD 2.6 RESCUE AND FIRE FIGHTING SERVICES**

|   |   |            |
|---|---|------------|
| 1 | AD category for fire fighting               | Category 6 |
| 2 | Rescue equipment                            | Yes        |
| 3 | Capability for removal of disabled aircraft | NIL        |
| 4 | Remarks                                     | NIL        |

**VTUI AD 2.7 SEASONAL AVAILABILITY - CLEARING**

|   |                             |   |
|---|-----------------------------|---|
| 1 | Types of clearing equipment | NIL                                     |
| 2 | Clearance priorities        | NIL                                     |
| 3 | Remarks                     | The aerodrome is available all seasons. |

**VTUI AD 2.8 APRONS, TAXIWAYS AND CHECK LOCATIONS/POSITIONS DATA**

|   |   |   |
|---|---|---|
| 1 | Apron surface and strength                  | Apron A (EAST)<br>Surface: Concrete<br>Strength: PCN 47/R/D/X/T<br>Apron A (WEST)<br>Surface: Concrete<br>Strength: PCN 47/R/C/X/T                    |
| 2 | Taxiway width, surface and strength         | TWY A, B and C<br>Width: 23 M<br>Surface: Asphalt<br>Strength: PCN 43/F/D/X/T<br>TWY D<br>Width: 23 M<br>Surface: Asphalt<br>Strength: PCN 46/F/C/X/T |
| 3 | Altimeter checkpoint location and elevation | NIL   |
| 4 | VOR checkpoints                             | NIL   |
| 5 | INS checkpoints                             | NIL   |
| 6 | Remarks                                     | NIL   |

**VTUI AD 2.9 SURFACE MOVEMENT GUIDANCE AND CONTROL SYSTEM AND MARKINGS**

|   |   |   |
|---|---|---|
| 1 | Use of aircraft stand ID signs, TWY guide lines and visual docking/parking guidance system of aircraft stands | Aircraft parking shall follow marshaller instructions   |
| 2 | RWY and TWY markings and LGT  | RWY marking: RWY Designation, THR, TDZ, CL, Aiming Point and Side Stripe<br>RWY LGT: THR, RWY Edge and RWY End<br>TWY marking: CL, Edge and RWY Holding Position<br>TWY LGT: TWY Edge |
| 3 | Stop bars   | NIL   |
| 4 | Remarks   | NIL   |

**VTUI AD 2.10 AERODROME OBSTACLES**

| In approach/TKOF areas |  |                  | In circling areas and at AD                |             | Remarks |
|------------------------|--|------------------|--|-------------|---------|
| 1                      |  |                  | 2  |             |         |
| RWY/Area affected      | Obstacle type<br>Elevation<br>Markings/LGT                   | Coordinates      | Obstacle type<br>Elevation<br>Markings/LGT | Coordinates |         |
| a                      | b  | c                | a  | b           |         |
| NIL                    | Radio mast<br>HGT 152 M<br>painted red/white<br>LGTD on top. | 170924N 1040754E | NIL  | NIL         | NIL     |
|                        | Radio mast<br>HGT 120 M<br>painted red/white<br>LGTD on top. | 171130N 1040542E | NIL  | NIL         |         |
|                        | Radio mast<br>HGT 52 M<br>painted red/white<br>LGTD on top.  | 17113N 1040717E  | NIL  | NIL         |         |

VTUI AD 2.11 METEOROLOGICAL INFORMATION PROVIDED

|    |  |  |
|----|--|--|
| 1  | Associated MET Office  | Aeronautical Meteorological Station-Sakon Nakhon,<br>Upper Northeastern Meteorological Center,<br>Thai Meteorological Department (TMD) |
| 2  | Hours of service<br>MET Office outside hours                           | 2200-1500<br>NIL   |
| 3  | Office responsible for TAF preparation<br>Periods of validity          | Supply TAF from Upper Northeastern Meteorological Center<br>24 HR  |
| 4  | Type of landing forecast<br>Interval of issuance                       | TREND<br>1 HR  |
| 5  | Briefing/consultation provided   | Personal Consultation<br>Tel: +664 271 6574 ext. 7613  |
| 6  | Flight documentation<br>Language(s) used                               | NIL  |
| 7  | Charts and other information available for<br>briefing or consultation | S, U85, Daily Weather Forecast, satellite and radar images   |
| 8  | Supplementary equipment available for<br>providing information         | Automated Weather Observation System (AWOS) and<br>Weather Radar   |
| 9  | ATS units provided with information                                    | Sakon Nakhon TWR   |
| 10 | Additional information (limitation of service, etc.)                   | NIL  |

VTUI AD 2.12 RUNWAY PHYSICAL CHARACTERISTICS

| Designations<br>RWY NR | TRUE BRG | Dimensions of<br>RWY(M) | Strength (PCN) and<br>surface of RWY and<br>SWY | THR coordinates<br>RWY end coordinates<br>THR geoid undulation | THR elevation and highest<br>elevation of TDZ of precision<br>APP RWY |
|------------------------|----------|-------------------------|---|--|---|
| 1                      | 2        | 3                       | 4   | 5  | 6   |
| 05                     | 045.50°  | 2600x45                 | PCN 43/F/D/X/T<br>Concrete and asphalt          | 171112.56N 1040635.89E   | THR 529 FT<br>TDZ 529 FT  |
| 23                     | 225.50°  | 2600x45                 | PCN 43/F/D/X/T<br>Concrete and asphalt          | 171212.45N 1040738.22E   | THR 526 FT<br>TDZ 526 FT  |

| Slope of RWY-SWY | SWY<br>dimensions<br>(M) | CWY<br>dimensions<br>(M) | Strip<br>dimensions<br>(M) | RESA<br>dimensions<br>(M) | Location and<br>description of<br>arresting<br>system | OFZ | Remarks |
|------------------|--------------------------|--------------------------|----------------------------|---------------------------|---|-----|---------|
| 7                | 8                        | 9                        | 10                         | 11                        | 12  | 13  | 14      |
| 0.0385%          | NIL                      | NIL                      | 2720x300                   | 305x90                    | NIL   | NIL | NIL     |
| 0.0385%          | NIL                      | NIL                      | 2720x300                   | 180x90                    | NIL   | NIL | NIL     |

VTUI AD 2.13 DECLARED DISTANCES

| RWY<br>Designator | TORA<br>(M) | TODA<br>(M) | ASDA<br>(M) | LDA<br>(M) | Remarks |
|-------------------|-------------|-------------|-------------|------------|---------|
| 1                 | 2           | 3           | 4           | 5          | 6       |
| 05                | 2600        | 2600        | 2600        | 2600       | NIL     |
| 23                | 2600        | 2600        | 2600        | 2600       | NIL     |

VTUI AD 2.14 APPROACH AND RUNWAY LIGHTING

| RWY Designator | APCH LGT type<br>LEN INTST | THR LGT colour<br>WBAR | VASIS (MEHT)<br>PAPI         | TDZ, LGT<br>LEN | RWY Centre Line LGT<br>Length, spacing, colour, INTST | RWY edge LGT<br>LEN, spacing, colour INTST | RWY End LGT<br>colour<br>WBAR | SWY LGT<br>LEN (M)<br>colour | Remarks |
|----------------|----------------------------|------------------------|------------------------------|-----------------|---|--|-------------------------------|------------------------------|---------|
| 1              | 2                          | 3                      | 4                            | 5               | 6   | 7  | 8                             | 9                            | 10      |
| 05             | RTIL                       | Green                  | PAPI<br>LEFT 3°<br>(15.72 M) | NIL             | NIL   | 2600 M<br>60 M<br>White,<br>LIH            | Red                           | NIL                          | NIL     |
| 23             | SALS<br>420 M              | Green                  | PAPI<br>LEFT 3°<br>(15.72 M) | NIL             | NIL   | 2600 M<br>60 M<br>White,<br>LIH            | Red                           | NIL                          | NIL     |

VTUI AD 2.15 OTHER LIGHTING, SECONDARY POWER SUPPLY

|   |  |   |
|---|--|---|
| 1 | ABN/IBN location, characteristics and hours of operation | ABN: At Tower Building, FLG W G EV 7 SEC.   |
| 2 | LDI location and LGT<br>Anemometer location and LGT      | NIL   |
| 3 | TWY edge and centre line lighting                        | Edge: ALL TWY   |
| 4 | Secondary power supply/switch-over time                  | Secondary power supply at Airfield Lighting (AFL) building<br>Switch-over time: 15 SEC. |
| 5 | Remarks  | NIL   |

VTUI AD 2.16 HELICOPTER LANDING AREA

|   |   |     |
|---|---|-----|
| 1 | Coordinates TLOF or THR of FATO<br>Geoid undulation       | NIL |
| 2 | TLOF and/or FATO elevation M/FT                           | NIL |
| 3 | TLOF and FATO area dimensions, surface, strength, marking | NIL |
| 4 | True and MAG BRG of FATO                                  | NIL |
| 5 | Declared distance available                               | NIL |
| 6 | APP and FATO lighting                                     | NIL |
| 7 | Remarks   | NIL |

VTUI AD 2.17 ATS AIRSPACE

|   |                                   |   |
|---|-----------------------------------|---|
| 1 | Designation and lateral limits    | A circle of 5 NM radius centred on SKN DVOR/DME<br>(171250.89N 1040812.34E) |
| 2 | Vertical limits                   | 2000 FT/AGL   |
| 3 | Airspace classification           | C   |
| 4 | ATS unit call sign<br>Language(s) | Sakon Nakhon Tower<br>English, Thai   |
| 5 | Transition altitude               | 11000 FT  |
| 6 | Remarks                           | NIL   |

VTUI AD 2.18 ATS COMMUNICATION FACILITIES

| Service designation | Call sign             | Frequency  | Hours of operation | Remarks                           |
|---------------------|-----------------------|--|--------------------|-----------------------------------|
| 1                   | 2                     | 3  | 4                  | 5                                 |
| APP                 | Sakon Nakhon Approach | 123.35 MHZ<br>284.0 MHZ<br>121.5 MHZ <sup>1)</sup> | As AD OPR HR       | <sup>1)</sup> Emergency frequency |
| TWR                 | Sakon Nakhon Tower    | 119.65 MHZ<br>236.6 MHZ<br>121.5 MHZ <sup>1)</sup> | As AD OPR HR       |                                   |
| ATIS                | Sakon Nakhon Airport  | 365.0 KHZ  | As AD OPR HR       |                                   |

VTUI AD 2.19 RADIO NAVIGATION AND LANDING AIDS

| Type of aid, MAG VAR CAT of ILS/MLS (For VOR/ILS/MLS, give declination) | ID   | Frequency           | Hours of operation | Position of transmitting antenna coordinates | Elevation of DME transmitting antenna | Remarks   |
|---|------|---------------------|--------------------|--|---------------------------------------|---|
| 1   | 2    | 3                   | 4                  | 5  | 6                                     | 7   |
| NDB   | SN   | 365 KHZ             | H24                | 171149.17N<br>10406653.42E                   | NIL                                   | Data refer from commissioning checked as follows:<br><ol style="list-style-type: none"> <li>Bearing 181°-360° 50 NM orbit altitude should not below 3 000 FT</li> <li>Bearing 001°-140° 50 NM orbit unable to check due to border limited</li> <li>Bearing 141°-180° unusable beyond 15 NM</li> </ol>   |
| DVOR/DME  | SKN  | 114.2 MHZ<br>CH 89X | H24                | 171250.89N<br>1040812.34E                    | NIL                                   | DVOR/DME restriction due to mountainous terrain surround DVOR/DME station, coverage check does not provide adequate signal at required altitude in various areas as follows:<br><ol style="list-style-type: none"> <li>30 NM orbit (Due to border limited) <ul style="list-style-type: none"> <li>Radial 000°-130° altitude should not below 2 100 FT</li> </ul> </li> <li>40 NM orbit <ul style="list-style-type: none"> <li>Radial 131°-280° altitude should not below 5 500 FT</li> <li>Radial 281°-359° altitude should not below 2 100 FT</li> </ul> </li> </ol> |
| IILS CAT I<br>RWY 23<br>LOC   | ISKN | 110.3 MHZ<br>CH40X  | H24                | 171107.73N<br>1040630.87E                    | NIL                                   | Designated operation coverage 18 NM.<br>ALT 6800 FT/AMSL.   |
| DME   |      |                     |                    | 171106.06N<br>1040632.52E                    | 527 FT                                | Paired with LOC FREQ  |
| GP  |      | 335.0 MHZ           | H24                | 171208.11N<br>1040728.88E                    | NIL                                   | 3 DEG REF Datum height 50 FT  |

**VTUI AD 2.20 LOCAL AERODROME REGULATIONS****1. VFR REPORTING POINTS AND LOCAL PROCEDURES**

Reporting points for VFR flight in order to expedite and maintain an orderly flow of air traffic into Sakon Nakhon Airport, the procedures of inbound traffic for VFR flight, conventional and prop - jet aircraft be set up as follows:

- a) Aircraft entering to land from north of Sakon Nakhon Airport, shall report over Nong Wai reservoir designated as November Whisky (172205.2N 1040316E) which is approximately 10 NM on radial 334 of SKN DVOR/DME (171250.89N1040812.34E), when reaching NW the aircraft will be instructed to join aerodrome traffic circuit accordingly.
- b) Aircraft entering to land from east of Sakon Nakhon Airport, shall report over Hoai Wung reservoir designated as Hotel Whisky (171805.2N 1043056.2E) which is approximately 22.5 NM on radial 077 of SKN DVOR/DME (171250.89N1040812.34E) when reaching HW the aircraft will be instructed to join aerodrome traffic circuit accordingly.
- c) Aircraft entering to land from south of Sakon Nakhon Airport, shall report over Nam Phung Dam designated as November Papa (170245.3N 1041216.3E), which is approximately 11 NM on radial 158 of SKN DVOR/DME (171250.89N1040812.34E), when reaching NP the aircraft will be instructed to join aerodrome traffic circuit accordingly.
- d) Aircraft entering to land from south of Sakon Nakhon Airport, shall report over Ban Na reservoir, designated as November Kilo (164625.4N 1040201.5E) which is approximately 27 NM on radial 192 of SKN DVOR/DME (171250.89N1040812.34E), when reaching NK the aircraft will be instructed to join aerodrome traffic circuit accordingly.
- e) Aircraft entering to land from west of Sakon Nakhon Airport, shall report over Nam Un reservoir, designated as November Uniform (171005.2N 1034646.5E) which is approximately 20.5 NM on radial 262 of SKN DVOR/DME (171250.89N1040812.34E), when reaching NU the aircraft will be instructed to join aerodrome traffic circuit accordingly.

**2. 180 DEGREES TURN ON THE RUNWAY**

To prevent runway pavement damage which may result in the closure of the aerodrome if such damage is severe, all aircraft Maximum Takeoff Weight (MTOW) more than 5700 KG are not allowed to make 180 degrees turn on the runway. The turn shall be made on the runway turn pad at the end of runway 05 and 23 only. Any breach done by the aircraft operator shall be recorded and reported to The Civil Aviation Authority of Thailand (CAAT)/ The Headquarter of that operator shall be liable for the compensation caused by such violation.

**VTUI AD 2.21 NOISE ABATEMENT PROCEDURES**

NIL

**VTUI AD 2.22 FLIGHT PROCEDURES**

NIL

**VTUI AD 2.23 ADDITIONAL INFORMATION**

- Bird concentration in the vicinity of runway 23 (end of runway 05)

**VTUI AD 2.24 CHARTS RELATED TO AN AERODROME**

| Chart name   | Page           |
|--|----------------|
| Aerodrome Chart - ICAO   | AD 2-VTUI-2-1  |
| Instrument Approach Chart - ICAO - VOR RWY 05                            | AD 2-VTUI-8-1  |
| Instrument Approach Chart - ICAO - VOR RWY 05 (Fix and point list table) | AD 2-VTUI-8-2  |
| Instrument Approach Chart - ICAO - VOR RWY 23                            | AD 2-VTUI-8-3  |
| Instrument Approach Chart - ICAO - VOR RWY 23 (Fix and point list table) | AD 2-VTUI-8-4  |
| Instrument Approach Chart - ICAO - ILS RWY 23                            | AD 2-VTUI-8-5  |
| Instrument Approach Chart - ICAO - ILS RWY 23 (Fix and point list table) | AD 2-VTUI-8-6  |
| Instrument Approach Chart - ICAO - LOC RWY 23                            | AD 2-VTUI-8-7  |
| Instrument Approach Chart - ICAO - LOC RWY 23 (Fix and point list table) | AD 2-VTUI-8-8  |
| Instrument Approach Chart - ICAO - RNP RWY 05                            | AD 2-VTUI-8-9  |
| Instrument Approach Chart - ICAO - RNP RWY 05 (Tabular description)      | AD 2-VTUI-8-10 |
| Instrument Approach Chart - ICAO - RNP RWY 23                            | AD 2-VTUI-8-11 |
| Instrument Approach Chart - ICAO - RNP RWY 23 (Tabular description)      | AD 2-VTUI-8-12 |

**INTENTIONALLY BLANK**



**AERODROME CHART - ICAO**

17 11 43 N  
104 07 07 E

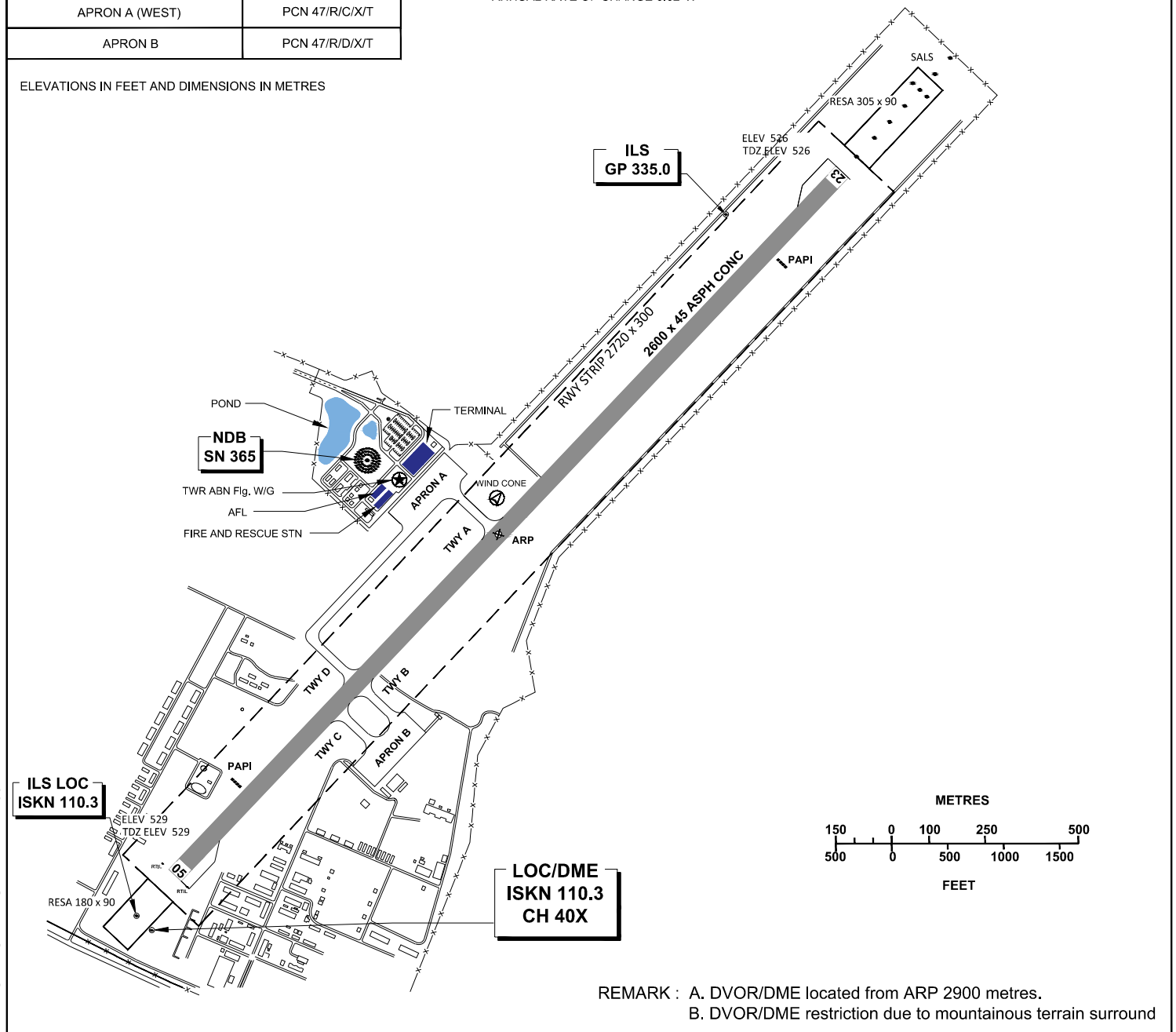
ELEV 529 FT

**TWR** 119.65  
236.60

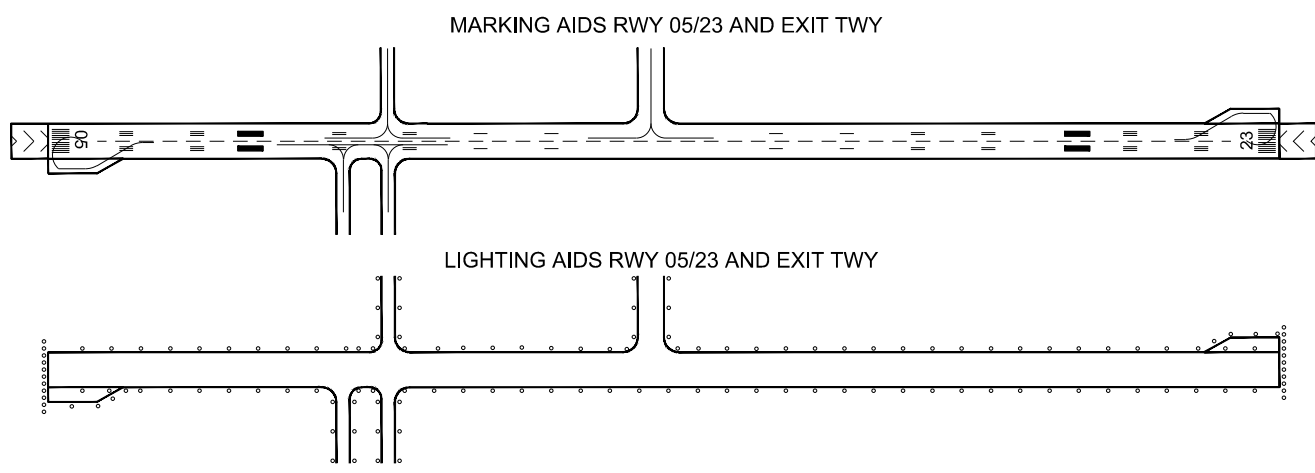
**SAKON NAKHON / Sakon Nakhon**

| RWY            | DIRECTION (TRUE BRG) | THR                             | BEARING STRENGTH |
|----------------|----------------------|---------------------------------|------------------|
| 05             | 46                   | 17 11 12.56 N<br>104 06 35.89 E | PCN 43/F/D/X/T   |
| 23             | 226                  | 17 12 12.45 N<br>104 07 38.22 E |                  |
| TAXIWAY A,B,C  |                      |                                 | PCN 43/F/D/X/T   |
| TAXIWAY D      |                      |                                 | PCN 46/F/C/X/T   |
| APRON A (EAST) |                      |                                 | PCN 47/R/D/X/T   |
| APRON A (WEST) |                      |                                 | PCN 47/R/C/X/T   |
| APRON B        |                      |                                 | PCN 47/R/D/X/T   |

ELEVATIONS IN FEET AND DIMENSIONS IN METRES



CHANGE : REVISED CHART. SWY CANCELLED. STRIP DIMS. RESA DIMS. RTIL RWY 05.



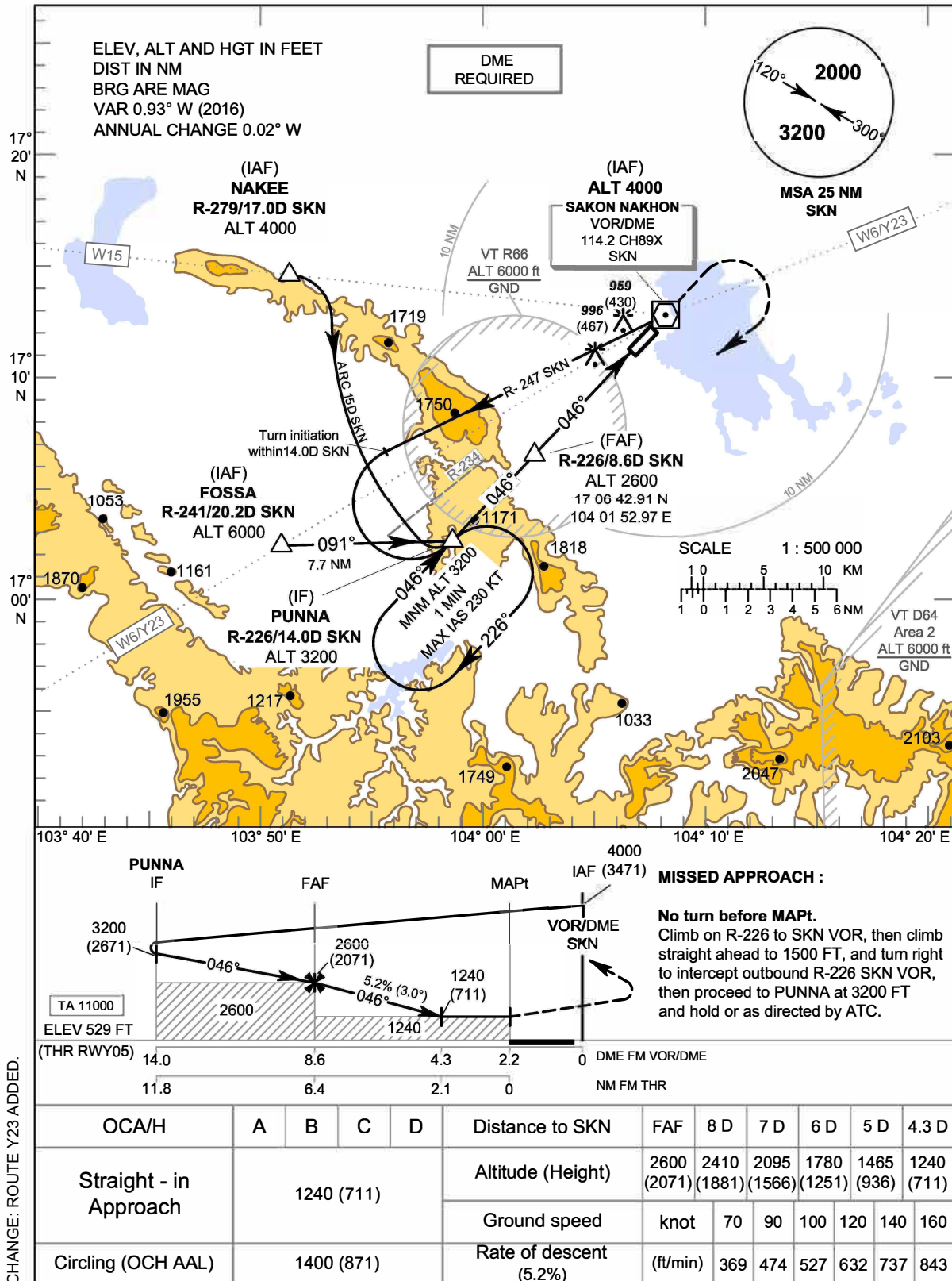
**INTENTIONALLY BLANK**

**INSTRUMENT APPROACH CHART - ICAO**  
**AERODROME ELEV 529 FT**  
**HEIGHTS RELATED TO AERODROME ELEV**

APP : 123.35  
TWR : 119.65 , 236.6

**SAKON NAKHON / Sakon Nakhon (VTUI)**

**VOR RWY05**



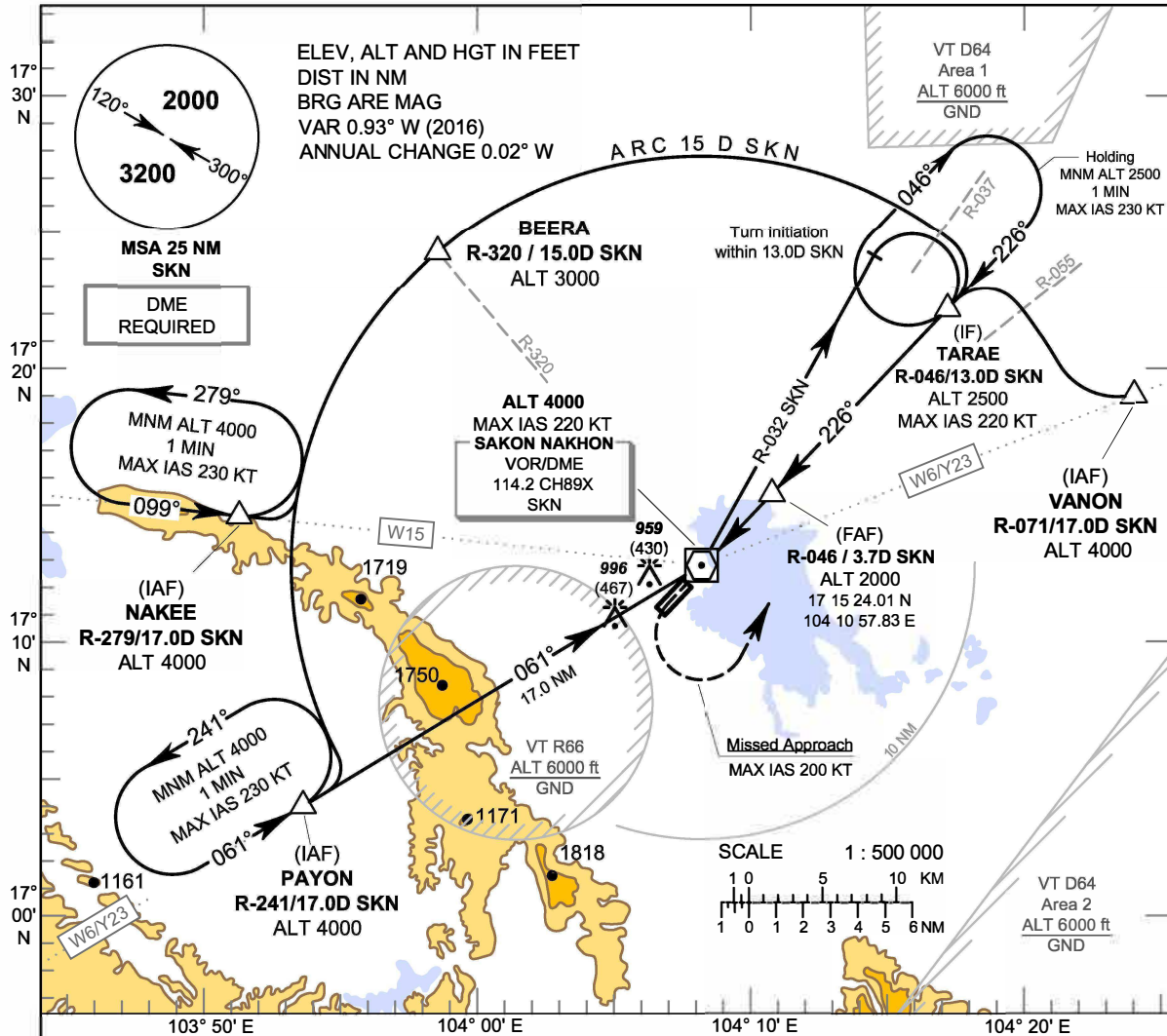
CHANGE: ROUTE Y23 ADDED.

**INSTRUMENT APPROACH CHART - ICAO**    **AERODROME ELEV 529 FT**  
HEIGHTS RELATED TO  
AERODROME ELEV

**SAKON NAKHON / Sakon Nakhon (VTUI)**  
**VOR RWY05**

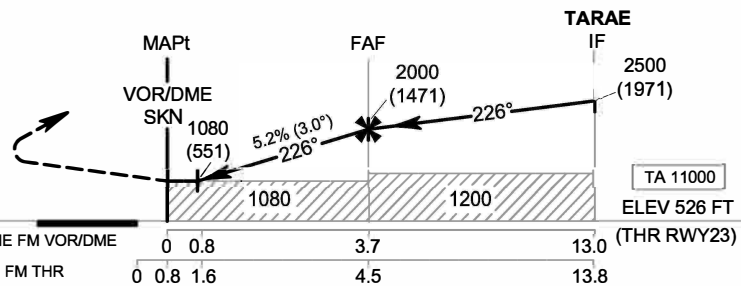
| FIX/POINT      |                   | COORDINATES   |                |
|----------------|-------------------|---------------|----------------|
| (IAF)<br>NAKEE | R-279 / 17.0D SKN | 17 15 05.96 N | 103 50 35.93 E |
| (IAF)<br>FOSSA | R-241 / 20.2D SKN | 17 02 51.48 N | 103 49 50.92 E |
| (IF)<br>PUNNA  | R-226 / 14.0D SKN | 17 02 49.77 N | 103 57 53.28 E |
| (FAF)          | R-226 / 8.6D SKN  | 17 06 42.91 N | 104 01 52.97 E |
| (MAPt)         | R-226 / 2.2D SKN  | 17 11 13.09 N | 104 06 35.28 E |
| (IAF)<br>VOR   | SKN               | 17 12 50.89 N | 104 08 12.34 E |

**INSTRUMENT APPROACH CHART - ICAO**      **AERODROME ELEV 529 FT**      **HEIGHTS RELATED TO AERODROME ELEV**      **APP : 123.35**      **SAKON NAKHON / Sakon Nakhon (VTUI)**      **TWR : 119.65 , 236.6**      **VOR RWY23**



**MISSED APPROACH :**

Speed restricted to **MAX IAS 200 KT** until after turn.  
At MAPt, turn left to intercept outbound R-046 SKN VOR, then proceed to TARAE at 2500 FT, and hold or as directed by ATC.



CHANGE: ROUTE Y23 ADDED.

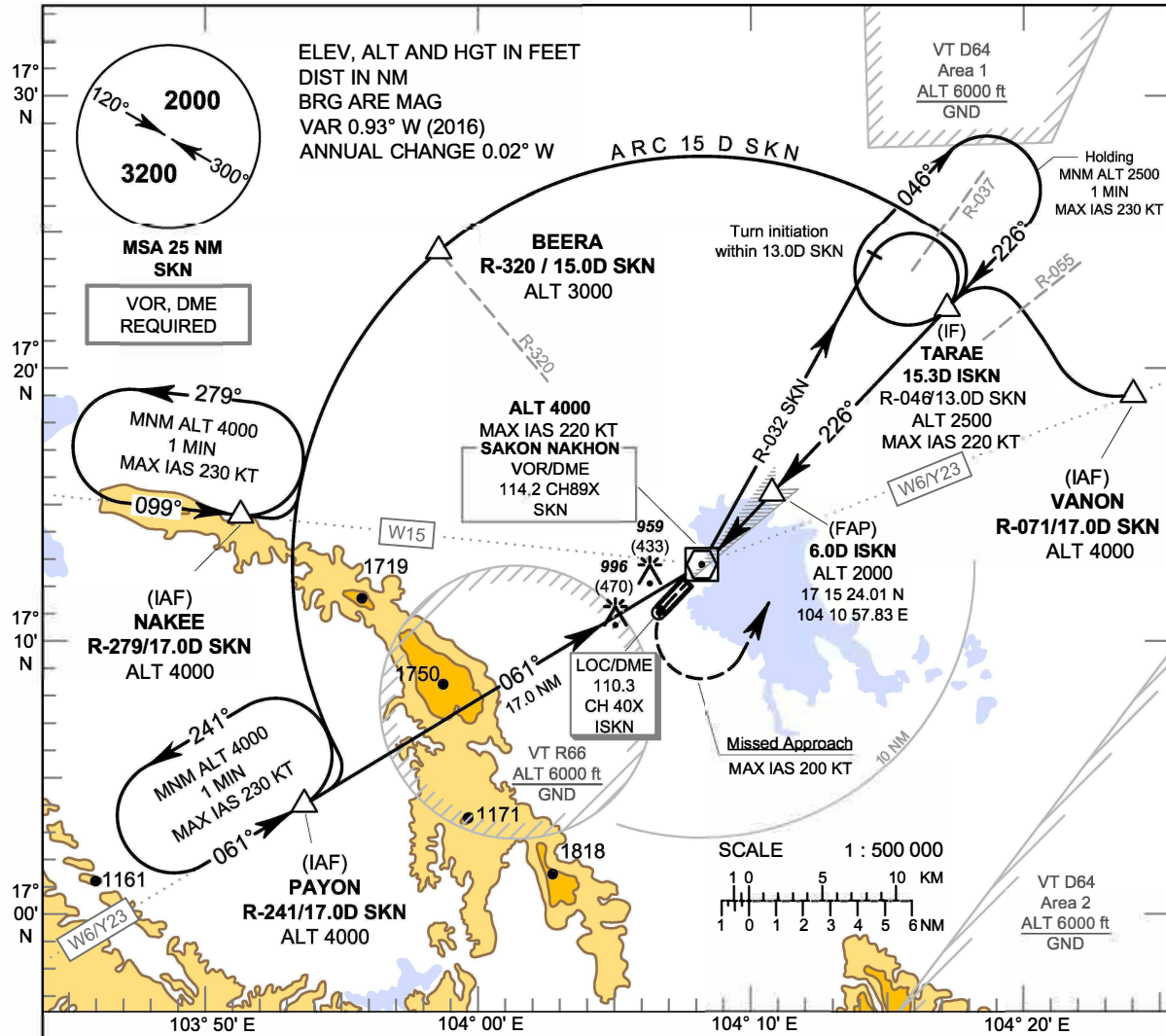
| OCA/H                  | A          | B | C | D | Distance to SKN        | 0.8 D      | 1 D        | 2 D        | 3 D         | FAF         |     |     |
|------------------------|------------|---|---|---|------------------------|------------|------------|------------|-------------|-------------|-----|-----|
| Straight - in Approach | 1080 (551) |   |   |   | Altitude (Height)      | 1080 (551) | 1150 (621) | 1465 (936) | 1780 (1251) | 2000 (1471) |     |     |
|                        |            |   |   |   | Ground speed           | knot       | 70         | 90         | 100         | 120         | 140 | 160 |
| Circling (OCH AAL)     | 1400 (871) |   |   |   | Rate of descent (5.2%) | (ft/min)   | 369        | 474        | 527         | 632         | 737 | 843 |

**INSTRUMENT APPROACH CHART - ICAO**    **AERODROME ELEV 529 FT**  
HEIGHTS RELATED TO  
AERODROME ELEV

**SAKON NAKHON / Sakon Nakhon (VTUI)**  
**VOR RWY23**

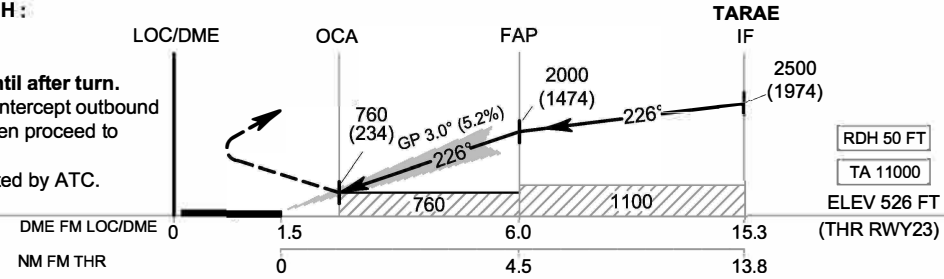
| FIX/POINT      |                   | COORDINATES   |                |
|----------------|-------------------|---------------|----------------|
| (IAF)<br>NAKEE | R-279 / 17.0D SKN | 17 15 05.96 N | 103 50 35.93 E |
| (IAF)<br>PAYON | R-241 / 17.0D SKN | 17 04 24.70 N | 103 52 46.34 E |
| (IAF)<br>VANON | R-071 / 17.0D SKN | 17 18 38.93 N | 104 24 52.65 E |
| BEERA          | R-320 / 15.0D SKN | 17 24 13.04 N | 103 57 55.37 E |
| (IF)<br>TARAE  | R-046 / 13.0D SKN | 17 22 01.55 N | 104 17 52.00 E |
| (FAF)          | R-046 / 3.7D SKN  | 17 15 24.01 N | 104 10 57.83 E |
| (MAPt)<br>VOR  | SKN               | 17 12 50.89 N | 104 08 12.34 E |

**INSTRUMENT APPROACH CHART - ICAO**    **AERODROME ELEV 529 FT**    **HEIGHTS RELATED TO THR RWY23 - ELEV 526 FT**    **APP : 123.35**    **TWR : 119.65 , 236.6**    **SAKON NAKHON / Sakon Nakhon (VTUI)**    **ILS RWY23**



**MISSED APPROACH :**

**Speed restricted to MAX IAS 200 KT until after turn.**  
At OCA, turn left to intercept outbound R-046 SKN VOR, then proceed to TARAE at 2500 FT, and hold or as directed by ATC.



CHANGE: ROUTE Y23 ADDED.

| OCA/H                  |       | A          | B | C | D | Ground speed           |          | knot | 70  | 90  | 100 | 120 | 140 | 160 |  |
|------------------------|-------|------------|---|---|---|------------------------|----------|------|-----|-----|-----|-----|-----|-----|--|
| Straight - in Approach | CAT I | 760 (234)  |   |   |   | Rate of descent (3.0°) | (ft/min) | 372  | 478 | 531 | 637 | 743 | 849 |     |  |
|                        |       | 1400 (871) |   |   |   |                        |          | 372  | 478 | 531 | 637 | 743 | 849 |     |  |

**INSTRUMENT APPROACH CHART - ICAO** **AERODROME ELEV 529 FT**  
HEIGHTS RELATED TO  
THR RWY23 - ELEV 526 FT

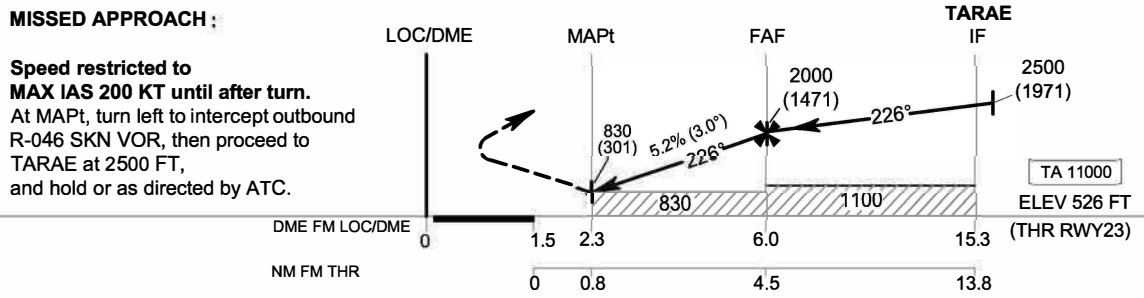
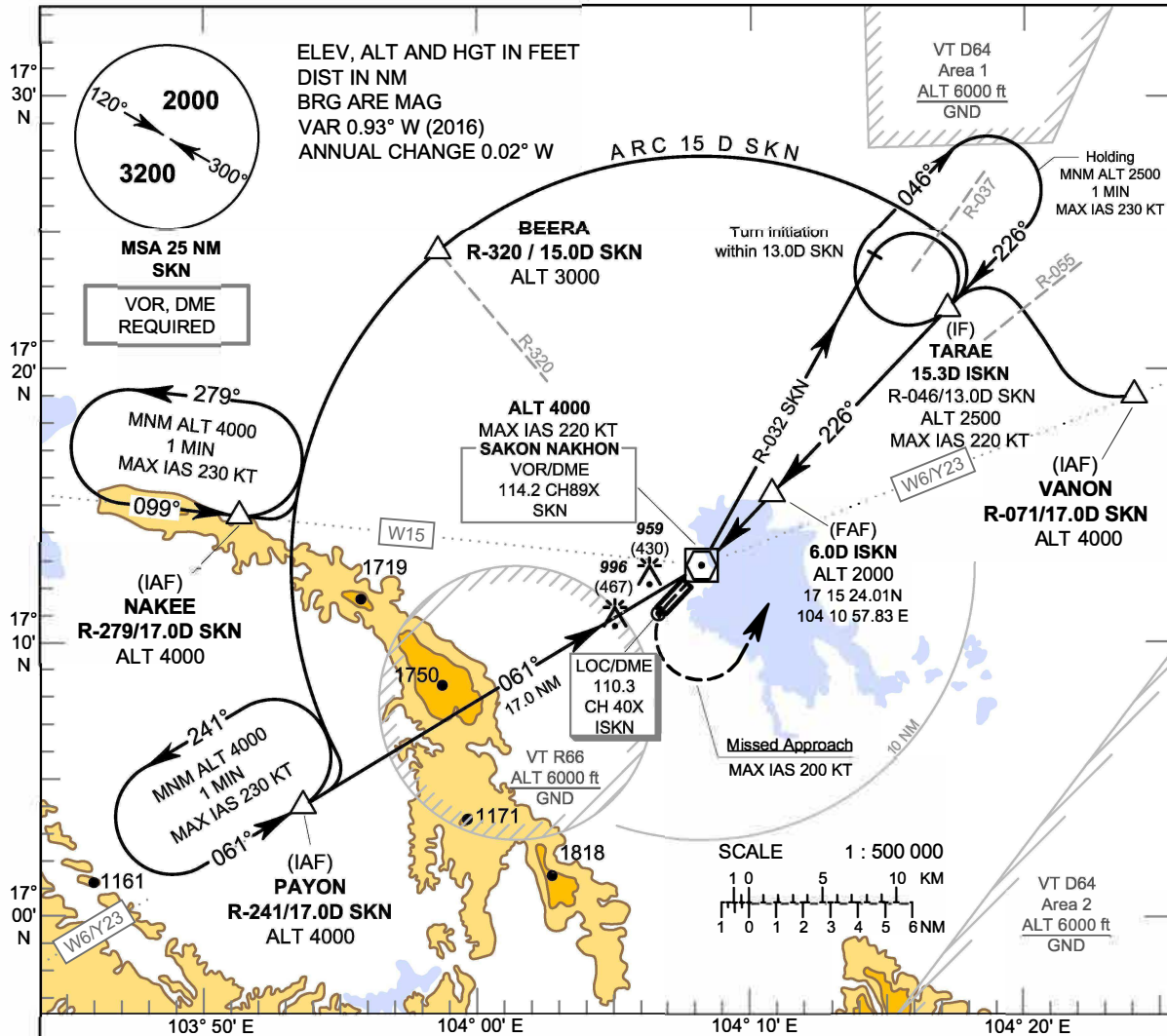
**SAKON NAKHON / Sakon Nakhon (VTUI)**

**ILS RWY23**

| FIX/POINT      |                   | COORDINATES   |                |
|----------------|-------------------|---------------|----------------|
| (IAF)<br>NAKEE | R-279 / 17.0D SKN | 17 15 05.96 N | 103 50 35.93 E |
| (IAF)<br>PAYON | R-241 / 17.0D SKN | 17 04 24.70 N | 103 52 46.34 E |
| (IAF)<br>VANON | R-071 / 17.0D SKN | 17 18 38.93 N | 104 24 52.65 E |
| BEERA          | R-320 / 15.0D SKN | 17 24 13.04 N | 103 57 55.37 E |
| (IF)<br>TARAE  | 15.3D ISKN        | 17 22 01.55 N | 104 17 52.00 E |
| (FAP)          | 6.0D ISKN         | 17 15 24.01 N | 104 10 57.83 E |
| LOC/DME        | ISKN              | 17 11 07.73 N | 104 06 30.87 E |
| VOR            | SKN               | 17 12 50.89 N | 104 08 12.34 E |



**INSTRUMENT APPROACH CHART - ICAO**    **AERODROME ELEV 529 FT**    **HEIGHTS RELATED TO AERODROME ELEV**    **APP : 123.35**    **TWR : 119.65 , 236.6**    **SAKON NAKHON / Sakon Nakhon (VTUI)**    **LOC RWY23**



CHANGE: ROUTE Y23 ADDED.

| OCA/H                  | A          | B | C | D | Distance to ISKN       | MAPt      | 3 D        | 4 D        | 5 D         | FAF         |     |     |
|------------------------|------------|---|---|---|------------------------|-----------|------------|------------|-------------|-------------|-----|-----|
| Straight - in Approach | 830 (301)  |   |   |   | Altitude (Height)      | 830 (301) | 1050 (521) | 1370 (841) | 1685 (1156) | 2000 (1471) |     |     |
|                        |            |   |   |   | Ground speed           | knot      | 70         | 90         | 100         | 120         | 140 | 160 |
| Circling (OCH AAL)     | 1400 (871) |   |   |   | Rate of descent (5.2%) | (ft/min)  | 369        | 474        | 527         | 632         | 737 | 843 |

**INSTRUMENT APPROACH CHART - ICAO** **AERODROME ELEV 529 FT**  
HEIGHTS RELATED TO  
AERODROME ELEV

**SAKON NAKHON / Sakon Nakhon (VTUI)**

**LOC RWY23**

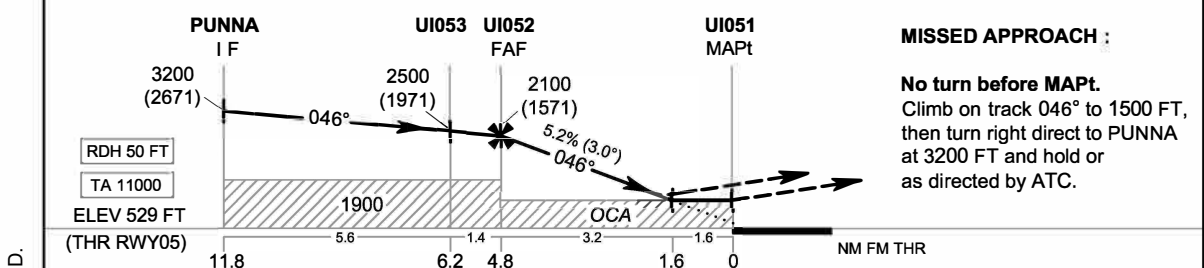
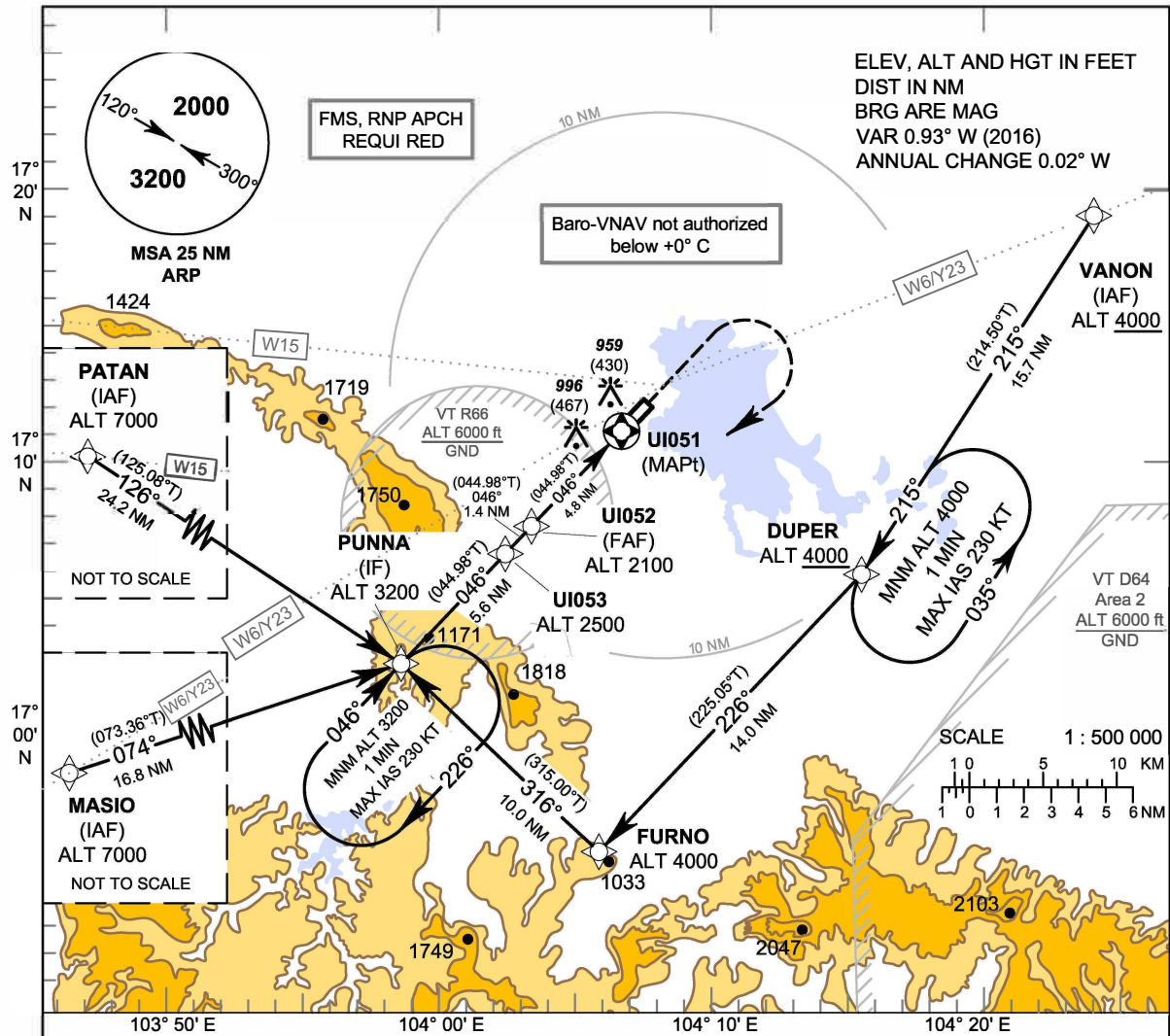
| FIX/POINT      |                   | COORDINATES   |                |
|----------------|-------------------|---------------|----------------|
| (IAF)<br>NAKEE | R-279 / 17.0D SKN | 17 15 05.96 N | 103 50 35.93 E |
| (IAF)<br>PAYON | R-241 / 17.0D SKN | 17 04 24.70 N | 103 52 46.34 E |
| (IAF)<br>VANON | R-071 / 17.0D SKN | 17 18 38.93 N | 104 24 52.65 E |
| BEERA          | R-320 / 15.0D SKN | 17 24 13.04 N | 103 57 55.37 E |
| (IF)<br>TARAE  | 15.3D ISKN        | 17 22 01.55 N | 104 17 52.00 E |
| (FAF)          | 6.0D ISKN         | 17 15 24.01 N | 104 10 57.83 E |
| MAPt           | 2.3D ISKN         | 17 12 45.68 N | 104 08 12.83 E |
| LOC/DME        | ISKN              | 17 11 07.73 N | 104 06 30.87 E |
| VOR            | SKN               | 17 12 50.89 N | 104 08 12.34 E |

**INSTRUMENT APPROACH CHART - ICAO**  
**AERODROME ELEV 529 FT**  
**HEIGHTS RELATED TO AERODROME ELEV**

APP : 123.35  
TWR : 119.65 , 236.6

**SAKON NAKHON / Sakon Nakhon (VTUI)**

**RNP RWY05**



CHANGE: ROUTE Y23 ADDED.

| OCA/H              | A          | B | C | D | NM to NEXT WPT         | FAF         | 4 NM        | 3 NM       | 2 NM       | 1.6 NM      |
|--------------------|------------|---|---|---|------------------------|-------------|-------------|------------|------------|-------------|
| LNAV/VNAV          | 1160 (631) |   |   |   | Altitude (Height)      | 2100 (1571) | 1840 (1311) | 1525 (996) | 1210 (681) | 1080 (551)  |
| LNAV               | 1080 (551) |   |   |   | Ground speed           | knot        | 70          | 90         | 100        | 120 140 160 |
| Circling (OCH AAL) | 1400 (871) |   |   |   | Rate of descent (5.2%) | (ft/min)    | 369         | 474        | 527        | 632 737 843 |

INSTRUMENT AERODROME ELEV 529 FT  
APPROACH HEIGHTS RELATED TO  
CHART - ICAO AERODROME ELEV

SAKON NAKHON / Sakon Nakhon (VTUI)  
RNP RWY05

**TABULAR DESCRIPTION**

| RNP RWY05 |            |                     |         |               |           |          |           |          |       |         |               |
|-----------|------------|---------------------|---------|---------------|-----------|----------|-----------|----------|-------|---------|---------------|
| Serial    | Path       | Waypoint Identifier | Flyover | Course        | Magnetic  | Distance | Turn      | Altitude | Speed | VPA/    | Navigation    |
| Number    | Descriptor |                     |         | ° M (° T)     | Variation | (NM)     | Direction | (FT)     | (KT)  | TCH     | Specification |
| 010       | IF         | VANON (IAF)         | -       | -             | +0.95     | -        | -         | +4000    | -     | -       | RNP APCH      |
| 020       | TF         | DUPER               | -       | 215°(214.50°) | +0.95     | 15.7     | R         | +4000    | -     | -       | RNP APCH      |
| 030       | TF         | FURNO               | -       | 226°(225.05°) | +0.95     | 14.0     | R         | @4000    | -     | -       | RNP APCH      |
| 040       | TF         | PUNNA (IF)          | -       | 316°(315.00°) | +0.95     | 10.0     | -         | @3200    | -     | -       | RNP APCH      |
| 010       | IF         | MASIO (IAF)         | -       | -             | +0.95     | -        | -         | @7000    | -     | -       | RNP APCH      |
| 020       | TF         | PUNNA (IF)          | -       | 074°(073.36°) | +0.95     | 16.8     | -         | @3200    | -     | -       | RNP APCH      |
| 010       | IF         | PATAN (IAF)         | -       | -             | +0.95     | -        | -         | @7000    | -     | -       | RNP APCH      |
| 020       | TF         | PUNNA (IF)          | -       | 126°(125.08°) | +0.95     | 24.2     | -         | @3200    | -     | -       | RNP APCH      |
| 010       | IF         | PUNNA (IF)          | -       | -             | +0.95     | -        | -         | @3200    | -     | -       | RNP APCH      |
| 020       | TF         | UI053               | -       | 046°(044.98°) | +0.95     | 5.6      | -         | @2500    | -     | -       | RNP APCH      |
| 030       | TF         | UI052 (FAF)         | -       | 046°(044.98°) | +0.95     | 1.4      | -         | @2100    | -     | -       | RNP APCH      |
| 040       | TF         | UI051 (MAPt)        | Y       | 046°(044.98°) | +0.95     | 4.8      | -         | @579     | -     | -3.0/50 | RNP APCH      |
| 050       | CA         | -                   | -       | 046°(044.98°) | +0.95     | -        | -         | + 1500   | -     | -       | RNP APCH      |
| 060       | DF         | PUNNA (IF)          | -       | -             | +0.95     | -        | R         | + 3200   | -     | -       | RNP APCH      |
| 070       | HM         | PUNNA (IF)          | Y       | 046°(044.98°) | +0.95     | 1 minute | R         | + 3200   | - 230 | -       | RNP APCH      |

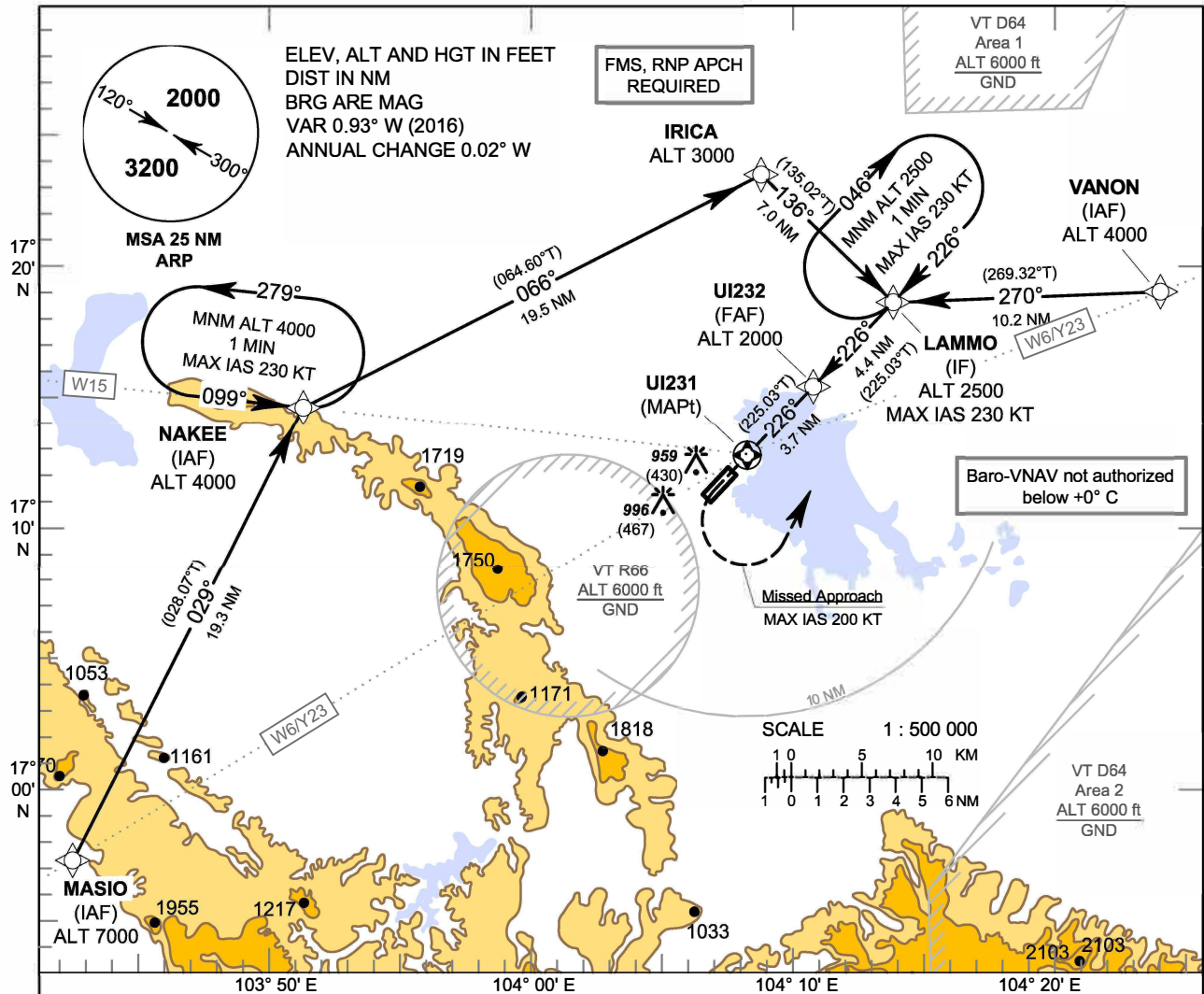
**WAYPOINT LIST**

| RNP RWY05           |                  |                   |
|---------------------|------------------|-------------------|
| Waypoint Identifier | Coordinates      |                   |
| VANON               | 17° 18' 38.93" N | 104° 24' 52.65" E |
| DUPER               | 17° 05' 40.03" N | 104° 15' 36.25" E |
| FURNO               | 16° 55' 43.91" N | 104° 05' 16.11" E |
| MASIO               | 16° 58' 01.07" N | 103° 41' 06.91" E |
| PATAN               | 17° 16' 47.29" N | 103° 37' 15.11" E |
| PUNNA               | 17° 02' 49.77" N | 103° 57' 53.28" E |
| UI053               | 17° 06' 48.43" N | 104° 02' 01.20" E |
| UI052               | 17° 07' 48.18" N | 104° 03' 03.21" E |
| UI051 (THR05)       | 17° 11' 12.56" N | 104° 06' 35.89" E |

**INSTRUMENT APPROACH CHART - ICAO**  
**AERODROME ELEV 529 FT**  
HEIGHTS RELATED TO AERODROME ELEV

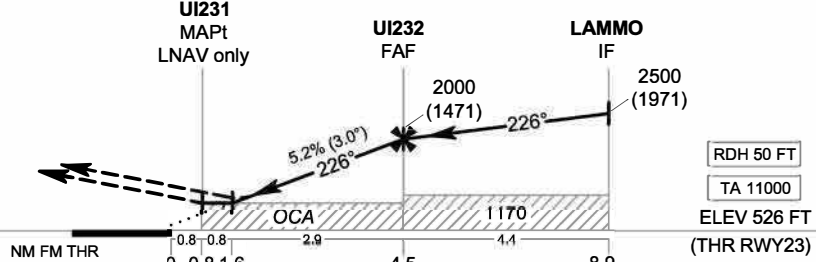
APP : 123.35  
TWR : 119.65 , 236.6

**SAKON NAKHON / Sakon Nakhon (VTUI)**  
**RNP RWY23**



**MISSED APPROACH :**

Speed restricted to **MAX IAS 200 KT** until after turn.  
At MAPt, turn left direct to LAMMO at 2500 FT, and hold or as directed by ATC.



CHANGE: ROUTE Y23 ADDED.

|                    |            |   |   |   |                        |            |            |            |             |             |     |     |
|--------------------|------------|---|---|---|------------------------|------------|------------|------------|-------------|-------------|-----|-----|
| OCA/H              | A          | B | C | D | NM to NEXT WPT         | 1.6 NM     | 2 NM       | 3 NM       | 4 NM        | FAF         |     |     |
| LNAV/VNAV          | 1170 (641) |   |   |   | Altitude (Height)      | 1080 (551) | 1210 (681) | 1525 (996) | 1845 (1316) | 2000 (1471) |     |     |
| LNAV               | 1080 (551) |   |   |   | Ground speed           | knot       | 70         | 90         | 100         | 120         | 140 | 160 |
| Circling (OCH AAL) | 1400 (871) |   |   |   | Rate of descent (5.2%) | (ft/min)   | 369        | 474        | 527         | 632         | 737 | 843 |

**INSTRUMENT APPROACH CHART - ICAO**    **AERODROME ELEV 529 FT**  
**HEIGHTS RELATED TO**  
**AERODROME ELEV**

**SAKON NAKHON / Sakon Nakhon (VTUI)**

**RNP RWY23**

**TABULAR DESCRIPTION**

| RNP RWY23     |                 |                     |         |                  |                    |               |                |               |            |          |                          |
|---------------|-----------------|---------------------|---------|------------------|--------------------|---------------|----------------|---------------|------------|----------|--------------------------|
| Serial Number | Path Descriptor | Waypoint Identifier | Flyover | Course ° M (° T) | Magnetic Variation | Distance (NM) | Turn Direction | Altitude (FT) | Speed (KT) | VPA/ TCH | Navigation Specification |
| 010           | IF              | MASIO (IAF)         | -       | -                | +0.95              | -             | -              | @7000         | -          | -        | RNP APCH                 |
| 020           | TF              | NAKEE (IAF)         | -       | 029°(028.07°)    | +0.95              | 19.3          | R              | @4000         | -          | -        | RNP APCH                 |
| 030           | TF              | IRICA               | -       | 066°(064.60°)    | +0.95              | 19.5          | R              | @3000         | -          | -        | RNP APCH                 |
| 040           | TF              | LAMMO (IF)          | -       | 136°(135.02°)    | +0.95              | 7.0           | -              | @2500         | -230       | -        | RNP APCH                 |
| 010           | IF              | NAKEE (IAF)         | -       | -                | +0.95              | -             | -              | @4000         | -          | -        | RNP APCH                 |
| 020           | TF              | IRICA               | -       | 066°(064.60°)    | +0.95              | 19.5          | R              | @3000         | -          | -        | RNP APCH                 |
| 030           | TF              | LAMMO (IF)          | -       | 136°(135.02°)    | +0.95              | 7.0           | -              | @2500         | -230       | -        | RNP APCH                 |
| 010           | IF              | VANON (IAF)         | -       | -                | +0.95              | -             | -              | @4000         | -          | -        | RNP APCH                 |
| 020           | TF              | LAMMO (IF)          | -       | 270°(269.32°)    | +0.95              | 10.2          | -              | @2500         | -230       | -        | RNP APCH                 |
| 010           | IF              | LAMMO (IF)          | -       | -                | +0.95              | -             | -              | @2500         | -230       | -        | RNP APCH                 |
| 020           | TF              | UI232 (FAF)         | -       | 226°(225.03°)    | +0.95              | 4.4           | -              | @2000         | -          | -        | RNP APCH                 |
| 030           | TF              | UI231 (MAPt)        | Y       | 226°(225.03°)    | +0.95              | 3.7           | L              | @830          | -          | -3.0/50  | RNP APCH                 |
| 040           | DF              | LAMMO (IF)          | -       | -                | +0.95              | -             | -              | + 2500        | -200       | -        | RNP APCH                 |
| 050           | HM              | LAMMO (IF)          | Y       | 226°(225.03°)    | +0.95              | 1 minute      | R              | + 2500        | -230       | -        | RNP APCH                 |

**WAYPOINT LIST**

| RNP RWY23           |                  |                   |
|---------------------|------------------|-------------------|
| Waypoint Identifier | Coordinates      |                   |
| MASIO               | 16° 58' 01.07" N | 103° 41' 06.91" E |
| NAKEE               | 17° 15' 05.96" N | 103° 50' 35.93" E |
| IRICA               | 17° 23' 29.74" N | 104° 09' 02.67" E |
| VANON               | 17° 18' 38.93" N | 104° 24' 52.65" E |
| LAMMO               | 17° 18' 31.38" N | 104° 14' 12.98" E |
| UI232               | 17° 15' 24.07" N | 104° 10' 57.76" E |
| UI231 (MAPt)        | 17° 12' 46.51" N | 104° 08' 13.70" E |
| THR 23              | 17° 12' 12.45" N | 104° 07' 38.22" E |