

## VTSM AD 2.1 AERODROME LOCATION INDICATOR AND NAME

## VTSM - SURAT THANI / SAMUI AIRPORT

## VTSM AD 2.2 AERODROME GEOGRAPHICAL AND ADMINISTRATIVE DATA

1	ARP coordinates and site at AD	093256N 1000345E Centre line of RWY, 860 M from THR 35
2	Direction and distance from (city)	17 KM, from city
3	Elevation/Reference temperature	19.5 M (64 FT) / 33°C
4	Geoid Undulation at AD ELEV PSN	NIL
5	MAG VAR/Annual change	0°22'W(2018)/0°1'E/year
6	AD Administration, address, telephone, telefax, telex, AFS	Director of Samui Airport Samui Airport Amphoe Ko.Samui Surat Thani Province 84320 Thailand Tel: +667 742 8521 Fax: +667 742 8539 E-mail: samuiairport@bangkokair.com Website:www.samuiairport.com AFS: VTSMYDYX
7	Types of traffic permitted (IFR/VFR)	IFR/VFR
8	Remarks	Operator: Bangkok Airways Public Company Limited

## VTSM AD 2.3 OPERATIONAL HOURS

1	Aerodrome Operator	2300-1500 After this period 1 HR PN to ATC
2	Customs and immigration	2300-1500
3	Health and sanitation	2300-1500
4	AIS Briefing Office	NIL
5	ATS Reporting Office (ARO)	2300-1500
6	MET Briefing Office	NIL
7	ATS	2300-1500
8	Fuelling	2300-1500
9	Handling	2300-1500
10	Security	H24
11	De-icing	NIL
12	Remarks	NIL

**VTSM AD 2.4 HANDLING SERVICES AND FACILITIES**

1	Cargo-handling facilities	NIL
2	Fuel/oil types	JET A1
3	Fuelling facilities/capacity	Refueller @ 2 Trailers 12,000 L, 1 Trailer 7,500 L
4	De-icing facilities	NIL
5	Hangar space for visiting aircraft	NIL
6	Repair facilities for visiting aircraft	NIL
7	Remarks	The airport has provided ground handling agents as following: Bangkok Airways Ground Services Co., Ltd (PGGS) Ground Handling Inquiry E-mail: office@pg-gs.com Phone: +667 742 8500 ext 31381 or +666 3079 6696

**VTSM AD 2.5 PASSENGER FACILITIES**

1	Hotels	In the vicinity of AD
2	Restaurants	At AD
3	Transportation	Limousine
4	Medical facilities	First aid at AD
5	Bank and Post Office	Money Exchange: Available Post Office: NIL
6	Tourist Office	Open 0100-1300
7	Remarks	NIL

**VTSM AD 2.6 RESCUE AND FIRE FIGHTING SERVICES**

1	AD category for fire fighting	Category 6
2	Rescue equipment	1 Rescue vehicle
3	Capability for removal of disabled aircraft	Available up to A319
4	Remarks	For removal of disabled aircraft by contracted external resource please contact aerodrome coordinator: - Airport Manager Tel: +668 1666 5451 - Airport Operations Manager Tel: +669 5256 9144 - Airport Fire Station Tel: +667 742 8500 ext. 31526

**VTSM AD 2.7 SEASONAL AVAILABILITY - CLEARING**

1	Types of clearing equipment	NIL
2	Clearance priorities	NIL
3	Remarks	The aerodrome is available all seasons.

**VTSM AD 2.8 APRONS, TAXIWAYS AND CHECK LOCATIONS/POSITIONS DATA**

1	Apron surface and strength	Surface: Concrete Strength: PCN 42/R/D/X/T
2	Taxiway width, surface and strength	Taxiway A, B, C, D, E and F Width: 30 M Surface: Concrete Strength: PCN 42/R/D/X/T
3	Altimeter checkpoint location and elevation	NIL
4	VOR checkpoints	NIL
5	INS checkpoints	NIL
6	Remarks	NIL

**VTSM AD 2.9 SURFACE MOVEMENT GUIDANCE AND CONTROL SYSTEM AND MARKINGS**

1	Use of aircraft stand ID signs, TWY guide lines and visual docking/parking guidance system of aircraft stands	Taxi guidance signs and guide lines at TWY and Apron
2	RWY and TWY markings and LGT	RWY: Marked and lighted
3	Stop bars	NIL
4	Remarks	NIL

**VTSM AD 2.10 AERODROME OBSTACLES**

In approach/TKOF areas			In circling areas and at AD		Remarks
1			2		
RWY/Area affected	Obstacle type Elevation Markings/LGT	Coordinates	Obstacle type Elevation Markings/LGT	Coordinates	
a	b	c	a	b	
RWY17/APCH	Building 28.5 M (93.5 FT) No Markings No LGT	093335.23N 1000346.24E	Hill 630 M	093324N 1000423E	See Aerodrome obstacle chart type A for details
RWY35/TKOF	Building 40 M (131 FT) No Markings No LGT	093415.23N 1000334.55E			

VTSM AD 2.11 METEOROLOGICAL INFORMATION PROVIDED

1	Associated MET Office	Aeronautical Meteorological Station-Samui, Southern East-Coast Meteorological Center, Thai Meteorological Department (TMD)
2	Hours of service MET Office outside hours	2200-1500 NIL
3	Office responsible for TAF preparation Periods of validity	Supply TAF from Southern East-Coast Meteorological Center 24 HR
4	Type of landing forecast Interval of issuance	TREND 1 HR
5	Briefing/consultation provided	Personal Consultation Tel: +667 742 8520
6	Flight documentation Language(s) used	Thai/English
7	Charts and other information available for briefing or consultation	S, U85, Daily Weather Forecast, satellite and radar images
8	Supplementary equipment available for providing information	Barometer, Anemometer and Thermometer Screen
9	ATS units provided with information	Samui TWR
10	Additional information (limitation of service, etc.)	NIL

VTSM AD 2.12 RUNWAY PHYSICAL CHARACTERISTICS

Designations RWY NR	TRUE BRG	Dimensions of RWY(M)	Strength (PCN) and surface of RWY and SWY	THR coordinates RWY end coordinates THE geoid undulation	THR elevation and highest elevation of TDZ of precision APP RWY
1	2	3	4	5	6
17	174°	2100x45	PCN 38/F/B/W/T Concrete and asphalt	093319.40N 1000342.26E	43 FT
35	354°	2100x45	PCN 38/F/B/W/T Concrete and asphalt	093227.55N 1000347.31E	56 FT

Slope of RWY-SWY	SWY dimensions (M)	CWY dimensions (M)	Strip dimensions (M)	OFZ	Remarks
7	8	9	10	11	12
0% / 0.8% 1300 M / 800 M	225x45	60x45	2085x150	NIL	See below
-0.8% / 0% 800 M / 1300 M  (See of Type A chart)	60x45	60x45	2020x150	NIL	See below

**Remarks**

Infringement of RWY strips

Infringement maximum of 52.5 M start at 376 M to 480 M from runway threshold 35, located on left side of runway 35.



VTSM AD 2.13 DECLARED DISTANCES

RWY Designator	TORA (M)	TODA (M)	ASDA (M)	LDA (M)	Remarks
1	2	3	4	5	6
17	1800	1860	2025	1825	NIL
35	1900	1960	1960	1660	NIL

VTSM AD 2.14 APPROACH AND RUNWAY LIGHTING

RWY Designator	APCH LGT type LEN INTST	THR LGT colour WBAR	VASIS (MEHT) PAPI	TDZ, LGT LEN	RWY Centre Line LGT Length, spacing, colour, INTST	RWY edge LGT LEN, spacing, colour INTST	RWY End LGT colour WBAR	SWY LGT LEN (M) colour	Remarks
1	2	3	4	5	6	7	8	9	10
17	NIL	Green	PAPI Right 3° (47.53 FT)	White 2 Pairs	2100 M,30 M White FM 0-1208 M, Red/White FM 1208-1800 M, Red FM 1800-2100 M, LIH	2100 M,60 M Red FM 0-200 M, White FM 200-1504 M, Yellow FM 1504-2100 M, LIH	Red	NIL	RTIL
35	NIL	Green	PAPI Left 3.2° (46.35 FT)	White 2 Pairs	2100 M,30 M White FM 0-1188 M, Red/White FM 1188-1780 M, Red FM 1780-2100 M, LIH	2100 M,60 M Red FM 0-300 M, White, FM 300-1485 M, Yellow FM 1485-2100 M, LIH	Red	NIL	RTIL

VTSM AD 2.15 OTHER LIGHTING, SECONDARY POWER SUPPLY

1	ABN/IBN location, characteristics and hours of operation	ABN: at Control Tower FLG/WG. EV 7 Sec 2300-1500
2	LDI location and LGT Anemometer location and LGT	LDI: 3 Wind cone with illumination at THR 17, 500 M and 800 M from THR 17 and 180 M from THR 35 Anemometer: At MET Station 410 M from THR 17
3	TWY edge and centre line lighting	TWY edge Lighted
4	Secondary power supply/switch-over time	Electrical Generator / 0 Sec (UPS)
5	Remarks	NIL

**VTSM AD 2.16 HELICOPTER LANDING AREA**

1	Coordinates TLOF or THR of FATO Geoid undulation	NIL
2	TLOF and/or FATO elevation M/FT	NIL
3	TLOF and FATO area dimensions, surface, strength, marking	NIL
4	True and MAG BRG of FATO	NIL
5	Declared distance available	NIL
6	APP and FATO lighting	NIL
7	Remarks	NIL

**VTSM AD 2.17 ATS AIRSPACE**

1	Designation and lateral limits	A circle of 5 NM radius centred on SAMUI NDB (093314.01N 1000335.65E)
2	Vertical limits	2000 FT/AGL
3	Airspace classification	D
4	ATS unit call sign Language(s)	Samui Tower English, Thai
5	Transition altitude	11000 FT
6	Remarks	NIL

**VTSM AD 2.18 ATS COMMUNICATION FACILITIES**

Service designation	Call sign	Frequency	Hours of operation	Remarks
1	2	3	4	5
APP	Samui Approach	129.6 MHZ / 305.4 MHZ <sup>1)</sup> <sup>4)</sup> 119.75 MHZ <sup>2)</sup> 121.5 MHZ <sup>3)</sup>	2300-1500	<sup>1)</sup> Primary frequency <sup>2)</sup> Secondary frequency <sup>3)</sup> Emergency frequency <sup>4)</sup> If unable to contact Samui Approach, contact Samui TWR on 118.9 MHZ
TWR	Samui Tower	118.9 MHZ 121.5 MHZ <sup>3)</sup>	2300-1500	
GND	Samui Ground	121.9 MHZ	2300-1500	
ATIS	Samui Airport	128.6 MHZ	2300-1500	

## VTSM AD 2.19 RADIO NAVIGATION AND LANDING AIDS

Type of aid, MAG VAR CAT of ILS/MLS (For VOR/ILS/MLS, give declination)	ID	Frequency	Hours of operation	Position of transmitting antenna coordinates	Elevation of DME transmitting antenna	Remarks
1	2	3	4	5	6	7
DVOR/DME	SMU	117.6 MHZ CH123X	H24	093249.47N 1000342.27E	24M	DVOR/DME restriction due to mountainous terrain surround DVOR/DME station, coverage check does not provide adequate signal at required altitude in various areas as follows: <ul style="list-style-type: none"> <li>– Radial 000°-015° beyond 25 NM altitude should not below 4 000 FT</li> <li>– Radial 016°-040° beyond 25 NM altitude should not below 6 000 FT</li> <li>– Radial 041°-060° beyond 20 NM altitude should not below 11 000 FT</li> <li>– Radial 061°-070° beyond 25 NM altitude should not below 9 000 FT</li> <li>– Radial 071°-120° beyond 40 NM altitude should not below 11 000 FT</li> <li>– Radial 121°-180° beyond 40 NM altitude should not below 5 000 FT</li> <li>– Radial 181°-210° beyond 25 NM altitude should not below 8 000 FT</li> <li>– Radial 211°-260° beyond 20 NM altitude should not below 9 000 FT</li> <li>– Radial 261°-280° beyond 25 NM altitude should not below 7 000 FT</li> <li>– Radial 281°-360° beyond 40 NM altitude should not below 8 000 FT</li> </ul>
NDB	SM	316 KHZ	H24	093314.01N 1000335.65E		

## VTSM AD 2.20 LOCAL AERODROME REGULATIONS

NIL

## VTSM AD 2.21 NOISE ABATEMENT PROCEDURES

## 1. ICAO Noise Abatement Departure Procedure RWY17/35

1.1 ICAO have developed aircraft operating procedures, Noise Abatement Departure Procedure 1 (NADP 1) and Noise Abatement Departure Procedure 2 (NADP 2), for the take-off climb to ensure that the necessary safety of flight operations is maintained whilst minimizing exposure to noise on the ground.

1.2 NADP 1 is intended to provide noise reduction for noise sensitive areas in close proximity to the departure end of the runway. NADP 2 provides noise reduction to areas more distant from the runway end.

1.3 All operators are to adopt NADP 1 procedures for all take-offs from Samui Airport on RWY17 or RWY35

1.4 Full details of NADP 1 and NADP 2 are contained in ICAO Procedures for Air Navigation Services – Aircraft Operations, Volume 1 – Flight Procedures (PANSOPS, Doc 8168 Volume 1).

1.5 For Propeller and Turboprop Aeroplane, after take-off Pilot-in-Command should aim to use an airspeed giving the best rate of climb.

## 2. Noise Mitigating Measures

2.1 The following procedures are implemented to reduce aircraft noise levels when operating conditions permit. These measures include:

- a) Preferential use of Runway
- b) APU Restrictions
- c) Reverse Thrust Use

2.2 Preferential use of Runway

RWY35 for take-off and RWY17 for landing are preferentially to be used. However, in order to achieve maximum flight safety, this procedure is not applied under the following circumstances.

- a) The use of other runway is necessary in consideration of safety of the aircraft operation.
- b) The condition of the specified runway is not suitable for landing or take-off.
- c) The tail wind component, including gusts, exceeds 5 KT.
- d) The cross wind component, including gusts, exceeds 15 KT.
- e) When the possibility exists that orderly flow of traffic may be impeded.

2.3 APU Restrictions

For noise abatement purposes, pilots are encouraged to limit Auxiliary Power Units (APU) use to the minimum time necessary. The maximum recommended APU run-time is (30) minutes.

2.4 Reverse Thrust Use

The use of reverse thrust may negatively impact the residential community surrounding the Samui Airport, particularly during night hours. The use of minimum reverse thrust necessary for safety is recommended consistent with runway conditions and available length.

**3. Noise Level Limits**

3.1 Noise Operating Restrictions

Under the Environmental Protection (Aircraft Noise) Regulations, international and domestic aircraft operating to/from Samui Airport are required to be certified as compliant with the relevant ICAO Annex 16 Volume I, Aircraft Noise.

- Subsonic jets must be certified as Chapter 3 or Chapter 4.
- Aircraft with Chapter 2 noise certification are not permitted to operate.

3.2 Marginally Compliant Chapter 3 (MCC3) Aircraft

The operations to flights which will be operated by subsonic jet aircraft that meet the Chapter 3 standards by a cumulative margin of not more than 5 EPNdB (Marginally Compliant Chapter 3 (MCC3) Aircraft) will be prohibited for take-off and landing at Samui Airport between 1100 UTC and 2359 UTC.

3.3 Exempted MCC3 Aircraft

MCC3 aircraft operated for emergency, medical and humanitarian purposes are exempted from the above restriction.

**VTSM AD 2.22 FLIGHT PROCEDURES**

NIL

**VTSM AD 2.23 ADDITIONAL INFORMATION**

NIL

**VTSM AD 2.24 CHARTS RELATED TO AN AERODROME**

Chart name	Page
Aerodrome Chart - ICAO	AD 2-VTSM-2-1
Aircraft Parking/Docking Chart - ICAO	AD 2-VTSM-2-3
Aerodrome Ground Movement Chart - ICAO	AD 2-VTSM-2-5
Aerodrome Obstacle Chart - ICAO Type A - RWY 35/17	AD 2-VTSM-3-1
Standard Departure Chart - Instrument (SID) - ICAO - RNAV RWY 17 - DORNA1A ENRAG1A MESEM1A OLBAG1A RUMVA1A UPNEP1A	AD 2-VTSM-6-1
Standard Departure Chart - Instrument (SID) - ICAO - RNAV RWY 17 - DORNA1A ENRAG1A MESEM1A OLBAG1A RUMVA1A UPNEP1A (Tabular description)	AD 2-VTSM-6-2
Standard Departure Chart - Instrument (SID) - ICAO - RNAV RWY 17 - DORNA1A ENRAG1A MESEM1A OLBAG1A RUMVA1A UPNEP1A (Waypoint list table)	AD 2-VTSM-6-3
Standard Departure Chart - Instrument (SID) - ICAO - RNAV RWY 35 - ENRAG1B MESEM1B OLBAG1B RUMVA1B UPNEP1B	AD 2-VTSM-6-5
Standard Departure Chart - Instrument (SID) - ICAO - RNAV RWY 35 - ENRAG1B MESEM1B OLBAG1B RUMVA1B UPNEP1B (Tabular description)	AD 2-VTSM-6-6

Chart name	Page
Standard Departure Chart - Instrument (SID) - ICAO - RNAV RWY 35 - ENRAG1B MESEM1B OLBAG1B RUMVA1B UPNEP1B (Waypoint list table)	AD 2-VTSM-6-7
Instrument Approach Chart - ICAO - VOR RWY 17 - CAT A, B	AD 2-VTSM-8-1
Instrument Approach Chart - ICAO - VOR RWY 17 - CAT A, B (Fix and point list table)	AD 2-VTSM-8-2
Instrument Approach Chart - ICAO - VOR RWY 17 - CAT C	AD 2-VTSM-8-3
Instrument Approach Chart - ICAO - VOR RWY 17 - CAT C (Fix and point list table)	AD 2-VTSM-8-4
Instrument Approach Chart - ICAO - VOR RWY 35 - CAT A, B	AD 2-VTSM-8-5
Instrument Approach Chart - ICAO - VOR RWY 35 - CAT A, B (Fix and point list table)	AD 2-VTSM-8-6
Instrument Approach Chart - ICAO - VOR RWY 35 - CAT C	AD 2-VTSM-8-7
Instrument Approach Chart - ICAO - VOR RWY 35 - CAT C (Fix and point list table)	AD 2-VTSM-8-8
Instrument Approach Chart - ICAO - RNP RWY 17 - CAT A, B	AD 2-VTSM-8-9
Instrument Approach Chart - ICAO - RNP RWY 17 - CAT A, B (Tabular description)	AD 2-VTSM-8-10
Instrument Approach Chart - ICAO - RNP RWY 17 - CAT A, B (Waypoint list table)	AD 2-VTSM-8-11
Instrument Approach Chart - ICAO - RNP RWY 17 - CAT C	AD 2-VTSM-8-13
Instrument Approach Chart - ICAO - RNP RWY 17 - CAT C (Tabular description)	AD 2-VTSM-8-14
Instrument Approach Chart - ICAO - RNP RWY 17 - CAT C (Waypoint list table)	AD 2-VTSM-8-15
Instrument Approach Chart - ICAO - RNP RWY 35 - CAT A, B	AD 2-VTSM-8-17
Instrument Approach Chart - ICAO - RNP RWY 35 - CAT A, B (Tabular description)	AD 2-VTSM-8-18
Instrument Approach Chart - ICAO - RNP RWY 35 - CAT A, B (Waypoint list table)	AD 2-VTSM-8-19
Instrument Approach Chart - ICAO - RNP RWY 35 - CAT C	AD 2-VTSM-8-21
Instrument Approach Chart - ICAO - RNP RWY 35 - CAT C (Tabular description)	AD 2-VTSM-8-22
Instrument Approach Chart - ICAO - RNP RWY 35 - CAT C (Waypoint list table)	AD 2-VTSM-8-23

**INTENTIONALLY BLANK**

AERODROME CHART - ICAO

09 32 56 N  
100 03 45 E ELEV 64 ft.

TWR 118.9  
121.5  
243.0

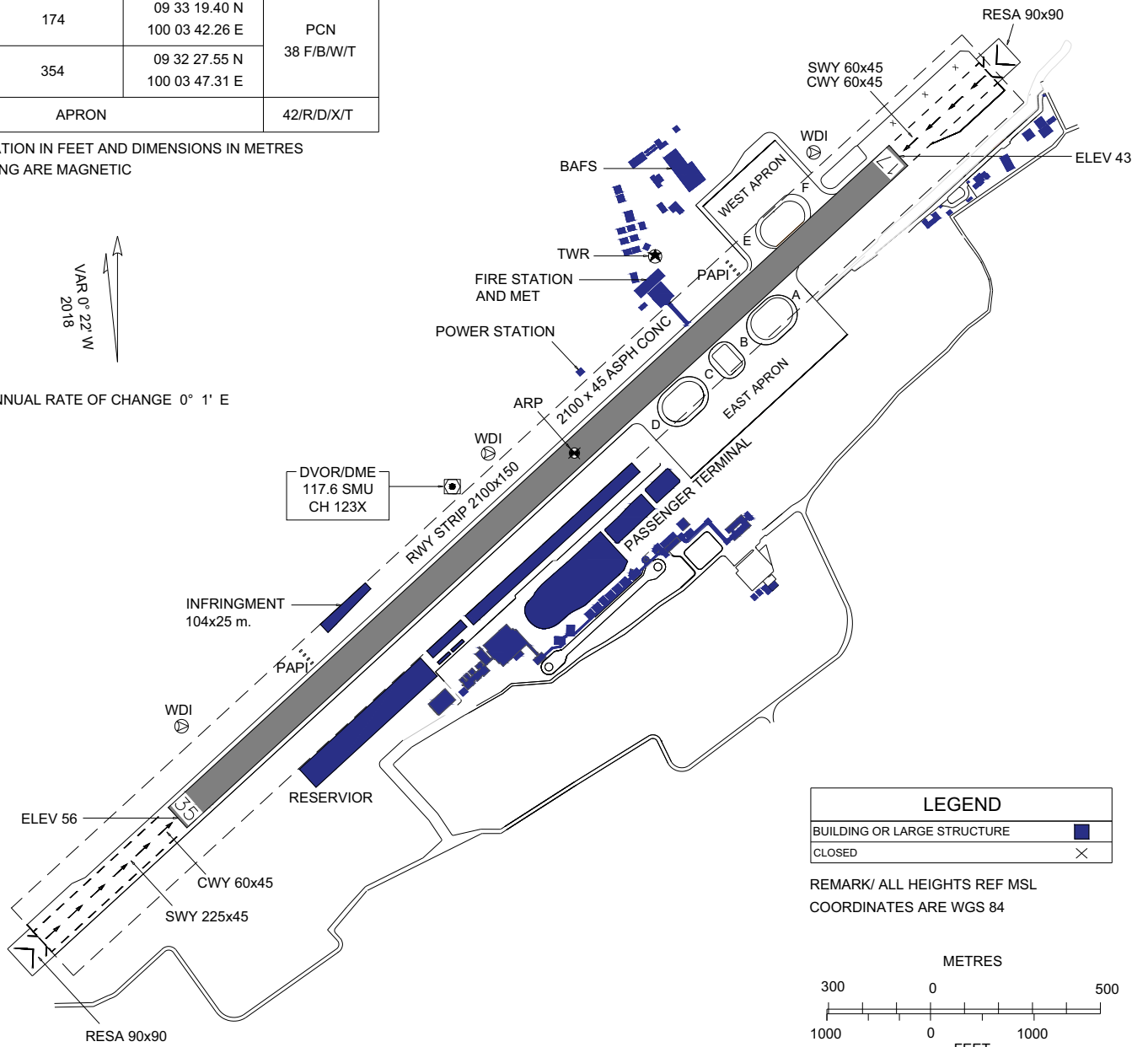
SURAT THANI / Samui Airport

RWY	DIRECTION	THR	BEARING STRENGTH
17	174	09 33 19.40 N 100 03 42.26 E	PCN 38 F/B/W/T
35	354	09 32 27.55 N 100 03 47.31 E	
APRON			42/R/D/X/T

ELEVATION IN FEET AND DIMENSIONS IN METRES  
BEARING ARE MAGNETIC

VAR 0° 22' W  
2018

ANNUAL RATE OF CHANGE 0° 1' E



**LEGEND**

BUILDING OR LARGE STRUCTURE [Blue square symbol]

CLOSED [X symbol]

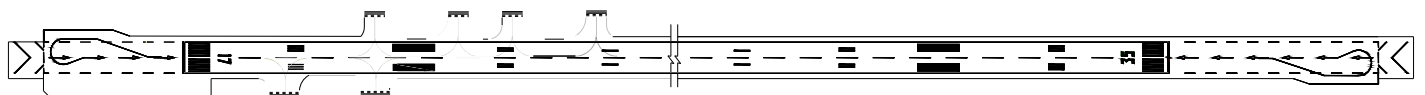
REMARK/ ALL HEIGHTS REF MSL  
COORDINATES ARE WGS 84

METRES  
300 0 500

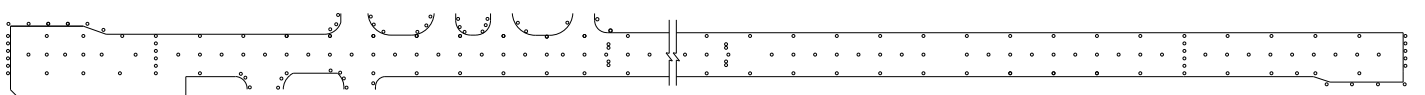
FEET  
1000 0 1000

SCALE 1 : 20,000

MARKING AIDS RWY 17/35 AND EXIT TWY



LIGHTING AIDS RWY 17/35 AND EXIT TWY



CHANGE : REVISED CHART. MAG VAR. ARP COORD. TWR FREQ. ANNUAL RATE OF CHANGE. WDI ADDED. INFRINGMENT. RWY STRIP.

**INTENTIONALLY BLANK**



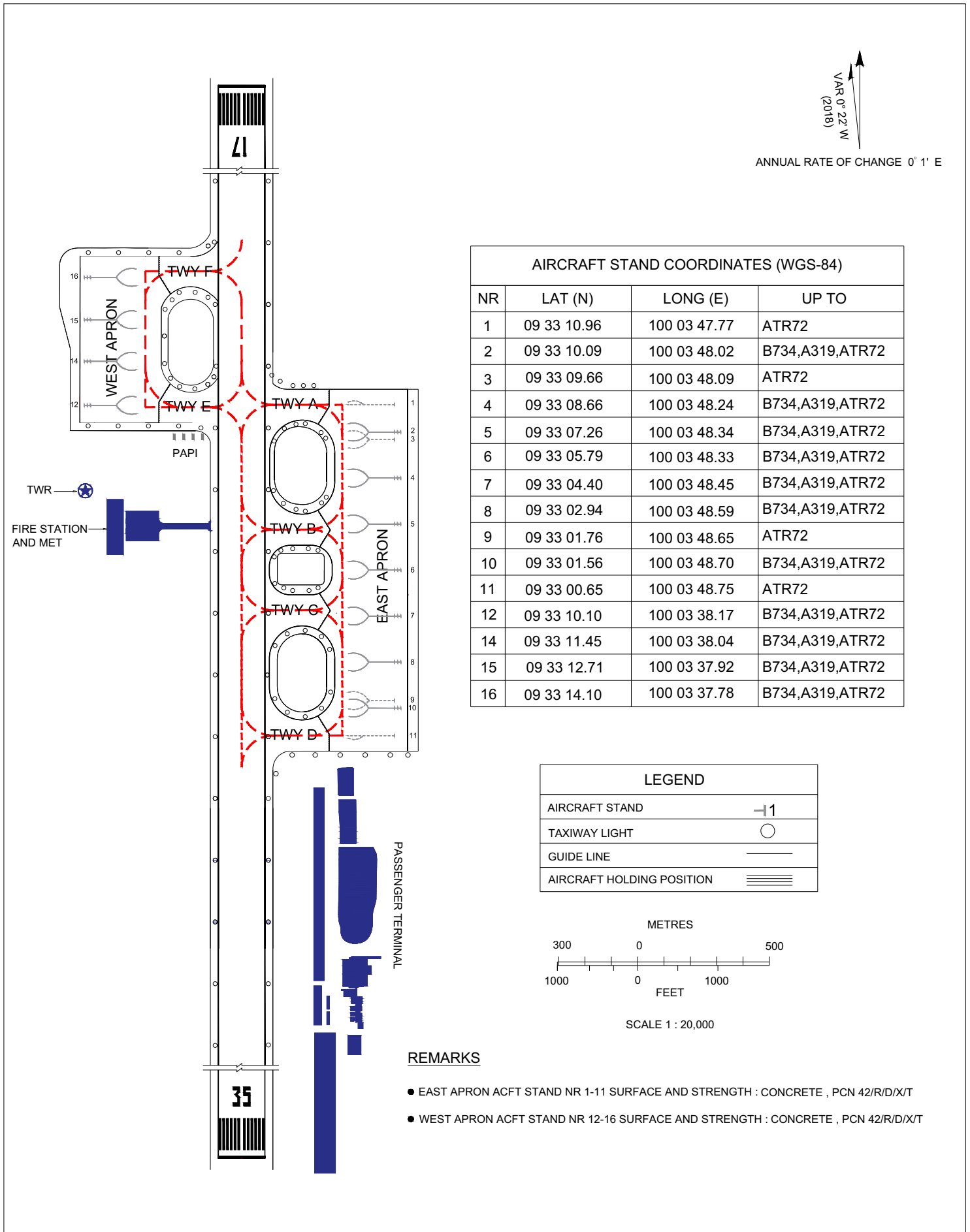
AIRCRAFT PARKING/  
DOCKING CHART - ICAO

09 32 56 N  
100 03 45 E

WEST APRON ELEV 47 ft.  
EAST APRON ELEV 46 ft.

TWR 118.9  
GND 121.9

SURAT THANI / Samui Airport



**INTENTIONALLY BLANK**

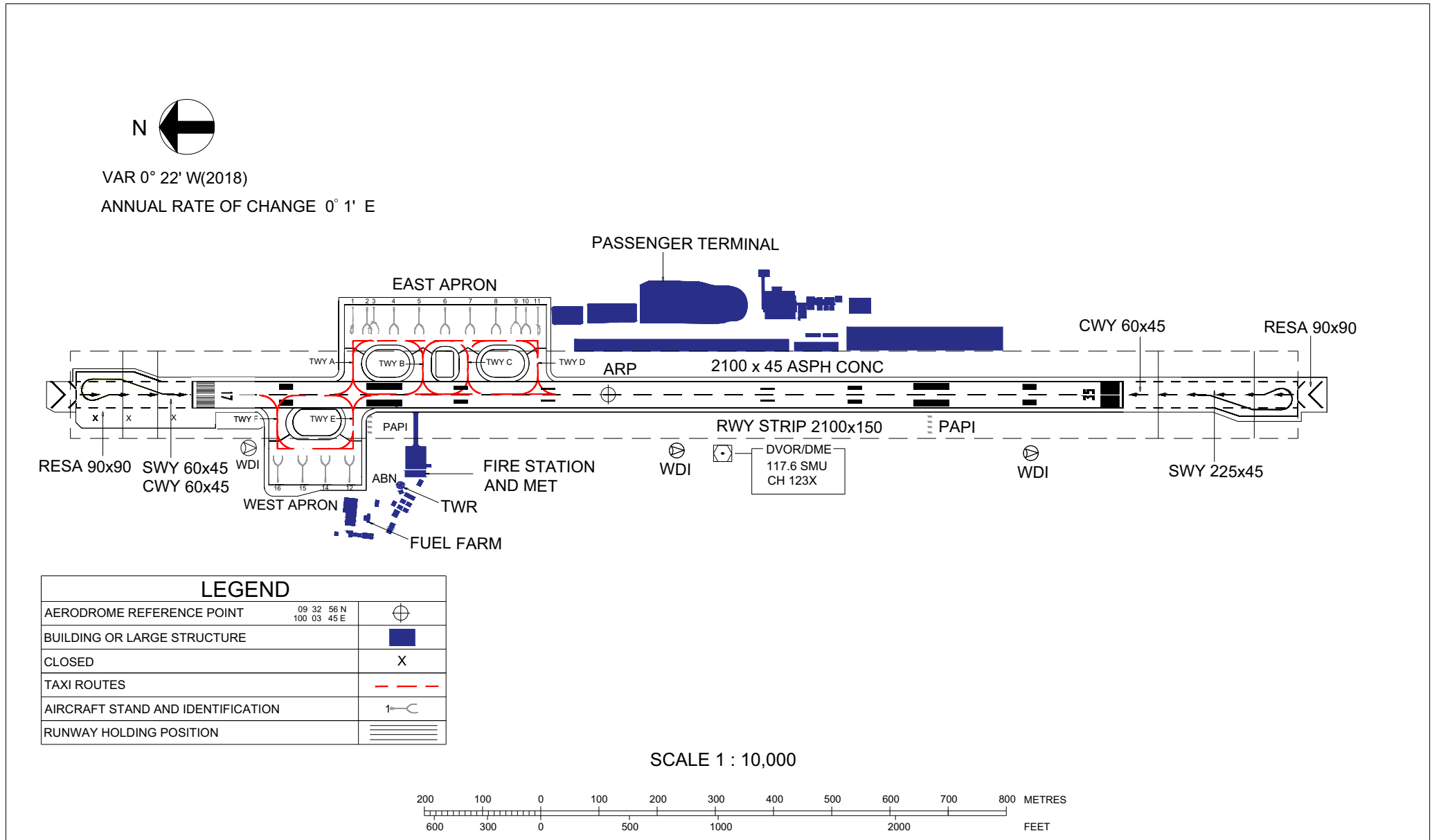
AERODROME GROUND  
MOVEMENT CHART - ICAO

WEST APRON ELEV 47 ft.  
EAST APRON ELEV 46 ft.

TWR 118.9  
GND 121.9

SURAT THANI / Samui Airport

CHANGE : REVISED CHART. MAG VAR. ARP COORD. TWR AND GND FREQ. ANNUAL RATE OF CHANGE. WDI ADDED. INFRINGEMENT. RWY STRIP. TWY E AND F ADDED. EAST AND WEST APRON.



**INTENTIONALLY BLANK**

# Aerodrome Obstacle Chart - ICAO Type A (Operation Limitations)

SURAT THANI / Samui Airport

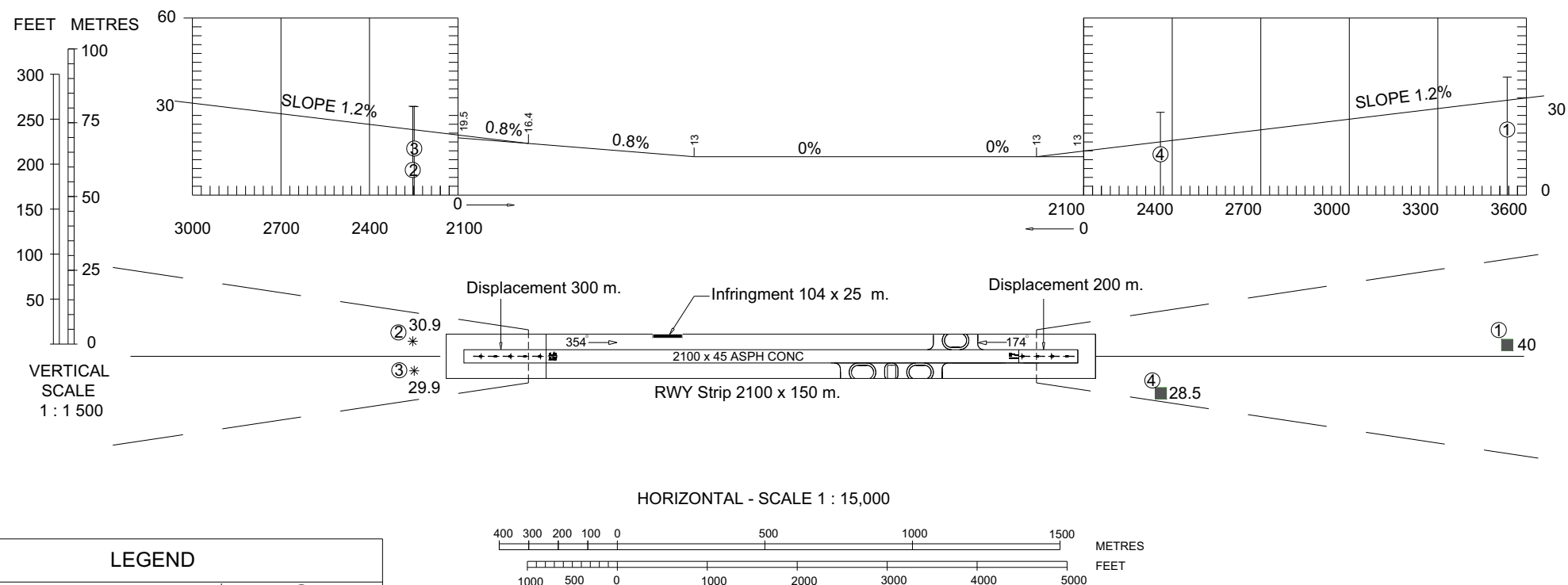
DIMENSIONS AND ELEVATIONS IN METRES  
MAGNETIC VARIATION 0° 22' W (2018)

### RUNWAY 35 / 17

DECLARED DISTANCES		
RWY 35		RWY 17
1900	TAKE-OFF RUN AVAILABLE	1800
1960	TAKE-OFF DISTANCE AVAILABLE	1860
1960	ACCELERATE STOP DISTANCE AVAILABLE	2025
1660	LANDING DISTANCE AVAILABLE	1825

### OPERATING LIMITATIONS

For ICAO reference code C aircraft  
during take-off and landing max cross-wind  
dry and wet RWY should be 5kts less than the  
flight manual recommended limits



LEGEND	
IDENTIFICATION NUMBER	①
LARGE STRUCTURE	■
TREE	✳

CHANGE : PAGE NUMBER CHANGED.

**INTENTIONALLY BLANK**

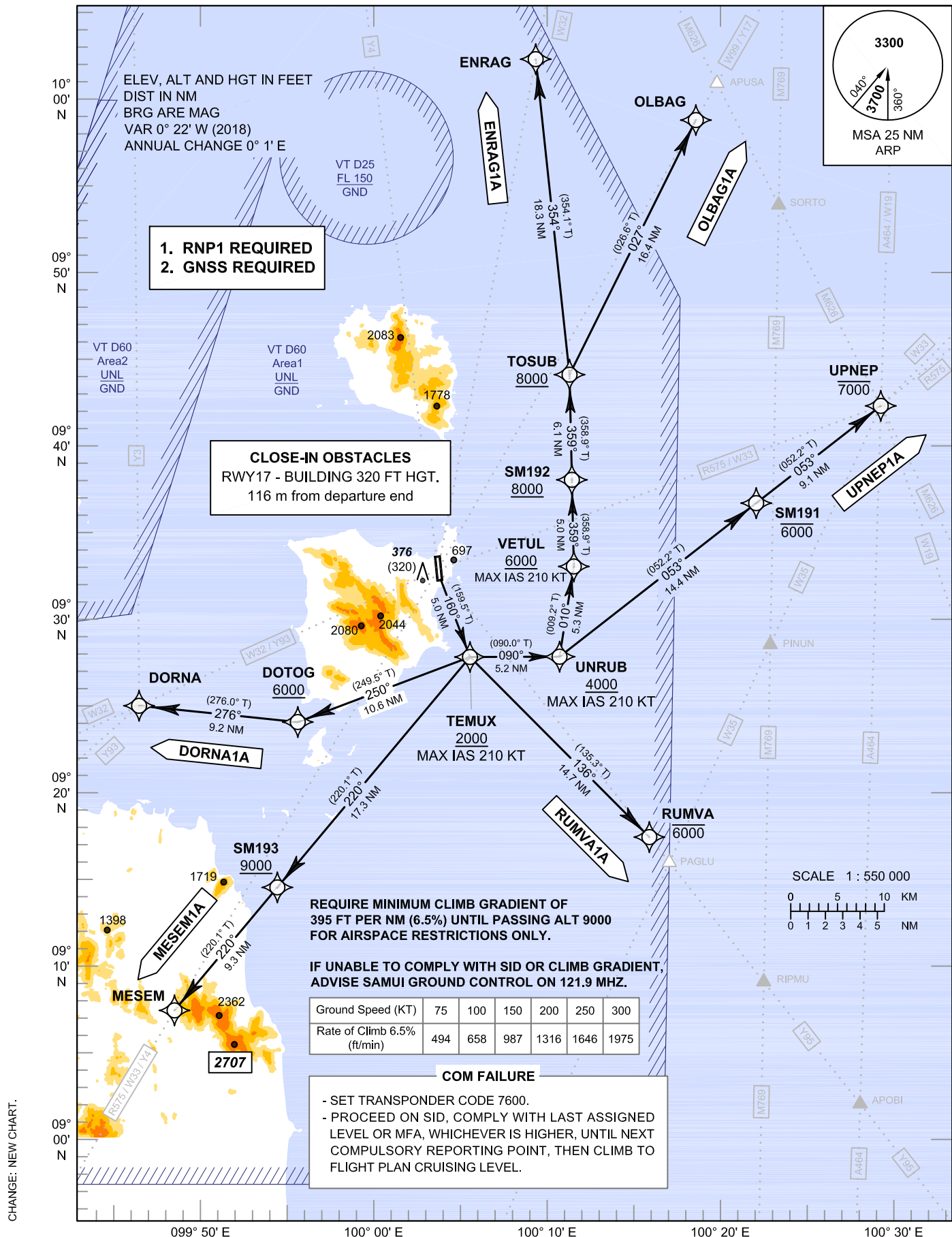
**STANDARD DEPARTURE CHART -  
INSTRUMENT (SID) - ICAO**

TRANSITION ALTITUDE  
11000 FT

APP : 129.6  
TWR : 118.9  
GND : 121.9  
ATIS : 128.6

**SURAT THANI / Samui (VTSM)  
RNAV RWY17**

DORNA1A ENRAG1A MESEM1A  
OLBAG1A RUMVA1A UPNEP1A



STANDARD DEPARTURE CHART -  
INSTRUMENT (SID) - ICAO

SURAT THANI / Samui (VTSM)  
RNAV RWY17

DORNA1A ENRAG1A MESEM1A  
OLBAG1A RUMVA1A UPNEP1A

**TABULAR DESCRIPTION**

RNAV RWY17											
Serial Number	Path Descriptor	Waypoint Identifier	Flyover	Course ° M (° T)	Magnetic Variation	Distance (NM)	Turn Direction	Altitude (FT)	Speed (KT)	VPA/ TCH	Navigation Specification
DORNA1A											
010	-	DER RWY17	-	-	+0.33	-	L	-	-	-	RNP 1
020	CF	TEMUX	-	160°(159.5°)	+0.33	5.0	R	+2000	-210	-	RNP 1
030	TF	DOTOG	-	250°(249.5°)	+0.33	10.6	R	+6000	-	-	RNP 1
040	TF	DORNA	-	276°(276.0°)	+0.33	9.2	-	-	-	-	RNP 1
ENRAG1A											
010	-	DER RWY17	-	-	+0.33	-	L	-	-	-	RNP 1
020	CF	TEMUX	-	160°(159.5°)	+0.33	5.0	L	+2000	-210	-	RNP 1
030	TF	UNRUB	-	090°(090.0°)	+0.33	5.2	L	+4000	-210	-	RNP 1
040	TF	VETUL	-	010°(009.2°)	+0.33	5.3	L	+6000	-210	-	RNP 1
050	TF	SM192	-	359°(358.9°)	+0.33	5.0	-	+8000	-	-	RNP 1
060	TF	TOSUB	-	359°(358.9°)	+0.33	6.1	L	+8000	-	-	RNP 1
070	TF	ENRAG	-	354°(354.1°)	+0.33	18.3	-	-	-	-	RNP 1
MESEM1A											
010	-	DER RWY17	-	-	+0.33	-	L	-	-	-	RNP 1
020	CF	TEMUX	-	160°(159.5°)	+0.33	5.0	R	+2000	-210	-	RNP 1
030	TF	SM193	-	220°(220.1°)	+0.33	17.3	-	+9000	-	-	RNP 1
040	TF	MESEM	-	220°(220.1°)	+0.33	9.3	-	-	-	-	RNP 1
OLBAG1A											
010	-	DER RWY17	-	-	+0.33	-	L	-	-	-	RNP 1
020	CF	TEMUX	-	160°(159.5°)	+0.33	5.0	L	+2000	-210	-	RNP 1
030	TF	UNRUB	-	090°(090.0°)	+0.33	5.2	L	+4000	-210	-	RNP 1
040	TF	VETUL	-	010°(009.2°)	+0.33	5.3	L	+6000	-210	-	RNP 1
050	TF	SM192	-	359°(358.9°)	+0.33	5.0	-	+8000	-	-	RNP 1
060	TF	TOSUB	-	359°(358.9°)	+0.33	6.1	R	+8000	-	-	RNP 1
070	TF	OLBAG	-	027°(026.6°)	+0.33	16.4	-	-	-	-	RNP 1
RUMVA1A											
010	-	DER RWY17	-	-	+0.33	-	L	-	-	-	RNP 1
020	CF	TEMUX	-	160°(159.5°)	+0.33	5.0	L	+2000	-210	-	RNP 1
030	TF	RUMVA	-	136°(135.3°)	+0.33	14.7	-	-6000	-	-	RNP 1
UPNEP1A											
010	-	DER RWY17	-	-	+0.33	-	L	-	-	-	RNP 1
020	CF	TEMUX	-	160°(159.5°)	+0.33	5.0	L	+2000	-210	-	RNP 1
030	TF	UNRUB	-	090°(090.0°)	+0.33	5.2	L	+4000	-210	-	RNP 1
040	TF	SM191	-	053°(052.2°)	+0.33	14.4	-	-6000	-	-	RNP 1
050	TF	UPNEP	-	053°(052.2°)	+0.33	9.1	-	-7000	-	-	RNP 1



STANDARD DEPARTURE CHART -  
INSTRUMENT (SID) - ICAO

SURAT THANI / Samui (VTSM)  
RNAV RWY17

DORNA1A ENRAG1A MESEM1A  
OLBAG1A RUMVA1A UPNEP1A

WAYPOINT LIST

RNAV RWY17		
Waypoint Identifier	Coordinates	
DER RWY17	09° 32' 27.55" N	100° 03' 47.31" E
DORNA	09° 24' 58.70" N	099° 46' 14.10" E
DOTOG	09° 24' 00.75" N	099° 55' 29.95" E
ENRAG	10° 02' 23.31" N	100° 09' 31.07" E
MESEM	09° 07' 19.05" N	099° 48' 15.85" E
OLBAG	09° 58' 49.36" N	100° 18' 52.25" E
RUMVA	09° 17' 16.93" N	100° 15' 59.72" E
SM191	09° 36' 36.69" N	100° 22' 18.46" E
SM192	09° 38' 00.18" N	100° 11' 32.87" E
SM193	09° 14' 25.82" N	099° 54' 16.76" E
TEMUX	09° 27' 45.27" N	100° 05' 33.73" E
TOSUB	09° 44' 05.84" N	100° 11' 25.88" E
UNRUB	09° 27' 45.24" N	100° 10' 47.51" E
UPNEP	09° 42' 13.10" N	100° 29' 36.40" E
VETUL	09° 32' 58.84" N	100° 11' 38.63" E



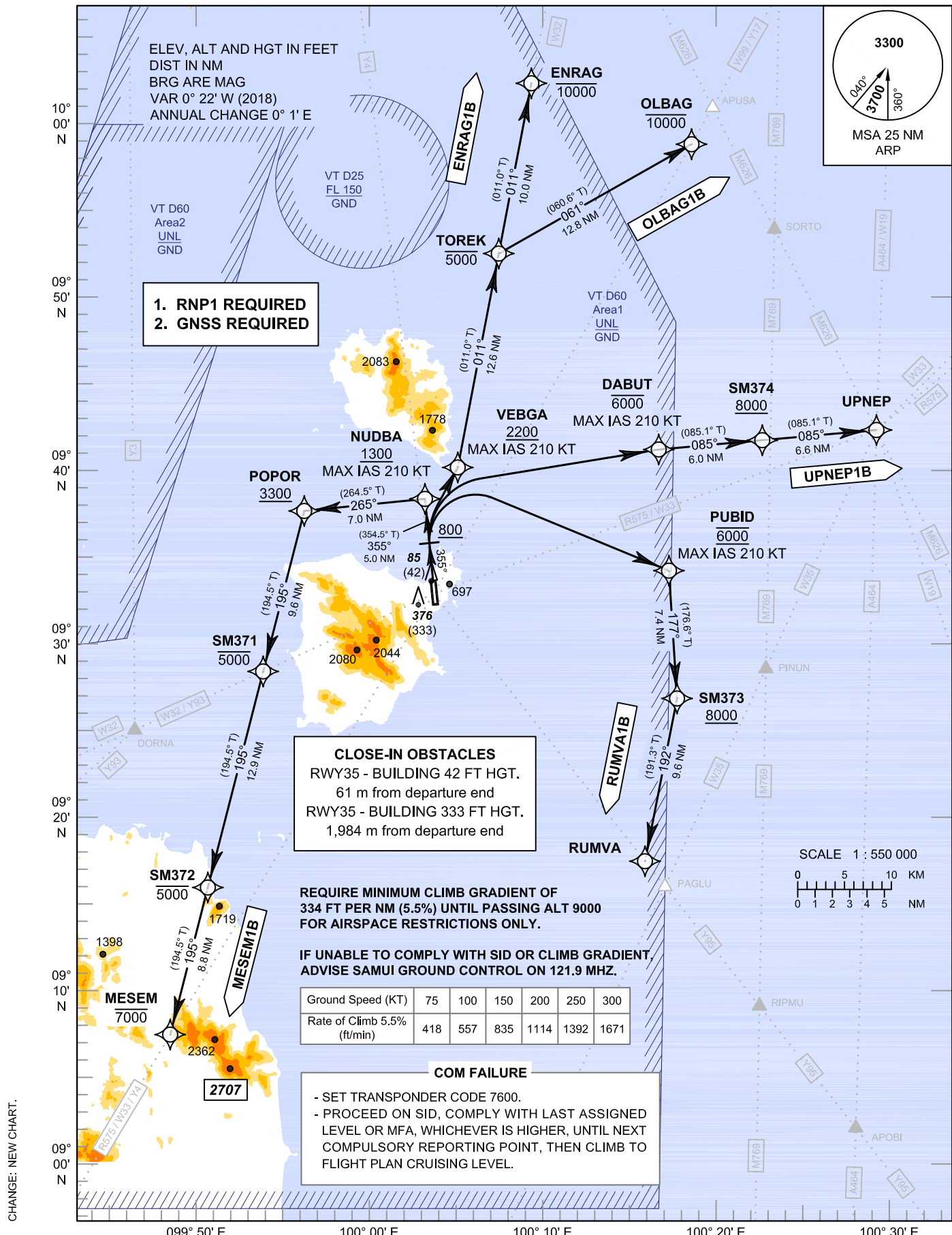
**STANDARD DEPARTURE CHART -  
INSTRUMENT (SID) - ICAO**

TRANSITION ALTITUDE  
11000 FT

APP : 129.6  
TWR : 118.9  
GND : 121.9  
ATIS : 128.6

**SURAT THANI / Samui (VTSM)  
RNAV RWY35**

ENRAG1B MESEM1B  
OLBAG1B RUMVA1B UPNEP1B



STANDARD DEPARTURE CHART -  
INSTRUMENT (SID) - ICAO

SURAT THANI / Samui (VTSM)  
RNAV RWY35

ENRAG1B MESEM1B  
OLBAG1B RUMVA1B UPNEP1B

TABULAR DESCRIPTION

RNAV RWY35											
Serial Number	Path Descriptor	Waypoint Identifier	Flyover	Course ° M (° T)	Magnetic Variation	Distance (NM)	Turn Direction	Altitude (FT)	Speed (KT)	VPA/ TCH	Navigation Specification
ENRAG1B											
010	-	DER RWY35	-	-	+0.33	-	-	-	-	-	RNP 1
020	CA	-	-	355°(354.5°)	+0.33	-	-	+800	-	-	RNP 1
030	DF	VEBGA	-	-	+0.33	-	R	+2200	-210	-	RNP 1
040	TF	TOREK	-	011°(011.0°)	+0.33	12.6	-	-5000	-	-	RNP 1
050	TF	ENRAG	-	011°(011.0°)	+0.33	10.0	-	-10000	-	-	RNP 1
MESEM1B											
010	-	DER RWY35	-	-	+0.33	-	-	-	-	-	RNP 1
020	CF	NUDBA	-	355°(354.5°)	+0.33	5.0	L	+1300	-210	-	RNP 1
030	TF	POPOR	-	265°(264.5°)	+0.33	7.0	L	+3300	-	-	RNP 1
040	TF	SM371	-	195°(194.5°)	+0.33	9.6	-	-5000	-	-	RNP 1
050	TF	SM372	-	195°(194.5°)	+0.33	12.9	-	-5000	-	-	RNP 1
060	TF	MESEM	-	195°(194.5°)	+0.33	8.8	-	-7000	-	-	RNP 1
OLBAG1B											
010	-	DER RWY35	-	-	+0.33	-	-	-	-	-	RNP 1
020	CA	-	-	355°(354.5°)	+0.33	-	-	+800	-	-	RNP 1
030	DF	VEBGA	-	-	+0.33	-	R	+2200	-210	-	RNP 1
040	TF	TOREK	-	011°(011.0°)	+0.33	12.6	R	-5000	-	-	RNP 1
050	TF	OLBAG	-	061°(060.6°)	+0.33	12.8	-	-10000	-	-	RNP 1
RUMVA1B											
010	-	DER RWY35	-	-	+0.33	-	-	-	-	-	RNP 1
020	CA	-	-	355°(354.5°)	+0.33	-	-	+800	-	-	RNP 1
030	DF	PUBID	-	-	+0.33	-	R	@6000	-210	-	RNP 1
040	TF	SM373	-	177°(176.6°)	+0.33	7.4	R	+8000	-	-	RNP 1
050	TF	RUMVA	-	192°(191.3°)	+0.33	9.6	-	-	-	-	RNP 1
UPNEP1B											
010	-	DER RWY35	-	-	+0.33	-	-	-	-	-	RNP 1
020	CA	-	-	355°(354.5°)	+0.33	-	-	+800	-	-	RNP 1
030	DF	DABUT	-	-	+0.33	-	R	-6000	-210	-	RNP 1
040	TF	SM374	-	085°(085.1°)	+0.33	6.0	-	+8000	-	-	RNP 1
050	TF	UPNEP	-	085°(085.1°)	+0.33	6.6	-	-	-	-	RNP 1

STANDARD DEPARTURE CHART -  
INSTRUMENT (SID) - ICAO

SURAT THANI / Samui (VTSM)  
RNAV RWY35

ENRAG1B MESEM1B  
OLBAG1B RUMVA1B UPNEP1B

WAYPOINT LIST

RNAV RWY35		
Waypoint Identifier	Coordinates	
DER RWY35	09° 33' 19.40" N	100° 03' 42.26" E
DABUT	09° 41' 08.45" N	100° 16' 53.04" E
ENRAG	10° 02' 23.31" N	100° 09' 31.07" E
MESEM	09° 07' 19.05" N	099° 48' 15.85" E
NUDBA	09° 38' 19.40" N	100° 03' 13.03" E
OLBAG	09° 58' 49.36" N	100° 18' 52.25" E
POPOR	09° 37' 38.71" N	099° 56' 09.81" E
PUBID	09° 34' 07.10" N	100° 17' 27.30" E
RUMVA	09° 17' 16.93" N	100° 15' 59.72" E
SM371	09° 28' 21.11" N	099° 53' 44.42" E
SM372	09° 15' 50.22" N	099° 50' 28.85" E
SM373	09° 26' 42.51" N	100° 17' 53.96" E
SM374	09° 41' 39.27" N	100° 22' 56.23" E
TOREK	09° 52' 31.68" N	100° 07' 34.62" E
UPNEP	09° 42' 13.10" N	100° 29' 36.40" E
VEBGA	09° 40' 08.36" N	100° 05' 08.47" E

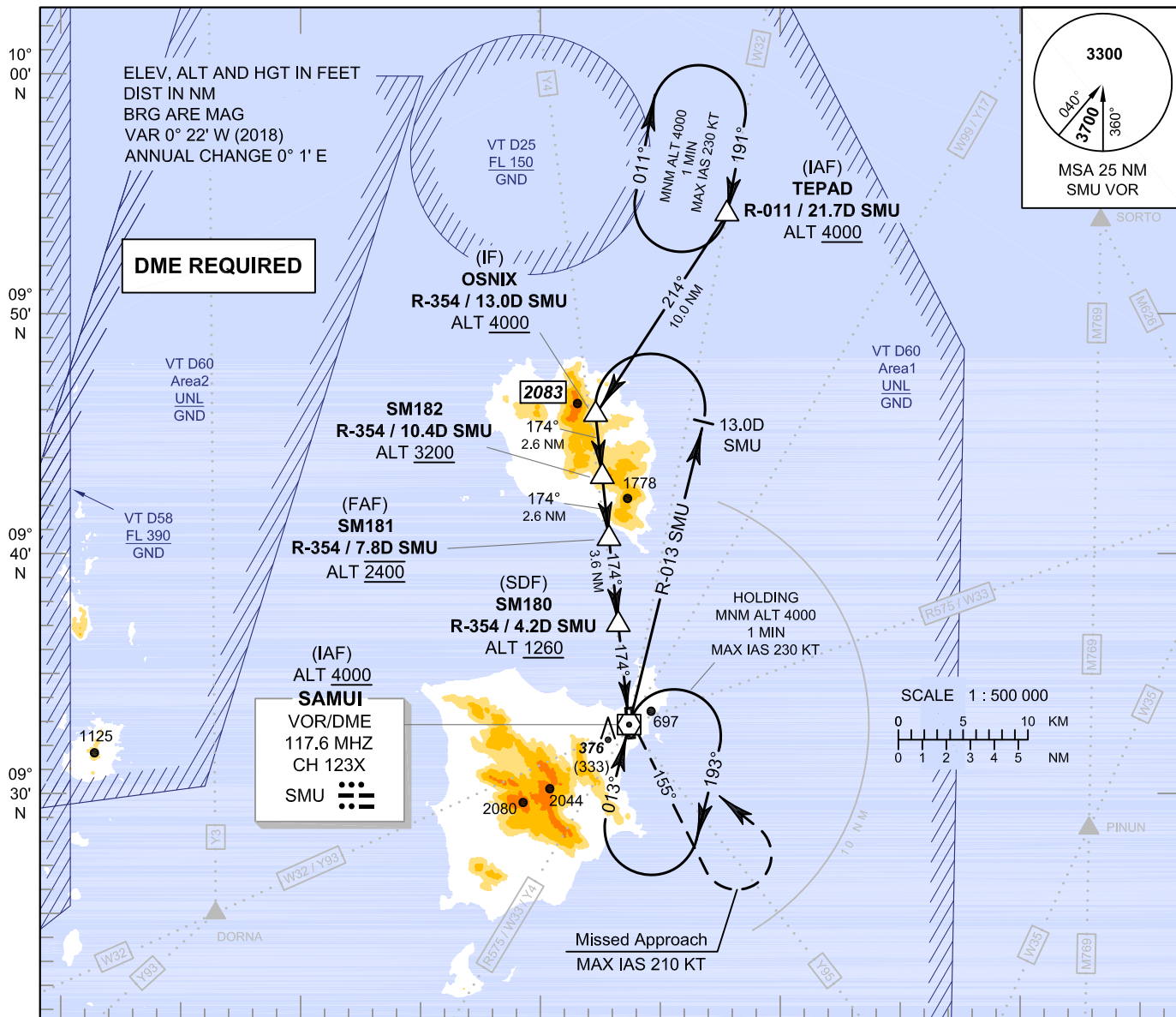


**INSTRUMENT  
APPROACH  
CHART - ICAO**

**AERODROME ELEV 64 FT  
HEIGHTS RELATED TO  
THR RWY17 - ELEV 43 FT**

APP : 129.6  
TWR : 118.9  
GND : 121.9  
ATIS : 128.6

**SURAT THANI / Samui (VTSM)  
VOR RWY17  
CAT A, B**



	(IF) OSNIX		(FAF) SM182		(SDF) SM181		(SDF) SM180		VOR/DME SMU							
	Distance (SMU)	Altitude (Height)	Distance (SMU)	Altitude (Height)	Distance (SMU)	Altitude (Height)	Distance (SMU)	Altitude (Height)	Distance (SMU)	Altitude (Height)						
OCA/H	A		B						Distance (SMU)	FAF	7 D	6 D	5 D	4 D	3.1 D	
Straight - in Approach	920 (877)		920 (877)		920 (877)		920 (877)		Altitude (Height)	2400 (2357)	2145 (2102)	1830 (1787)	1515 (1472)	1200 (1157)	920 (877)	
	920 (877)		920 (877)		920 (877)		920 (877)		Ground Speed	knot	70	90	100	120	140	
Circling* (OCH AAL)	1400 (1336)		1400 (1336)		1400 (1336)		1400 (1336)		Rate of Descent	ft/min	369	474	527	632	737	
* FOR CIRCLING RESTRICTIONS SEE VERSO.																

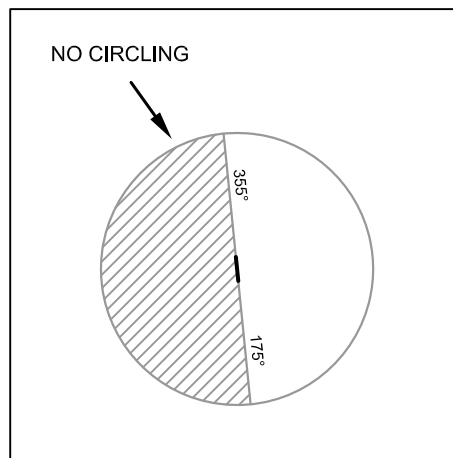
CHANGE: NEW PROCEDURES. INTERMEDIATE APPROACH SEGMENT - NO HORIZONTAL DISTANCE 1.0 NM DUE TO TERRAIN RESTRICTIONS.

**INSTRUMENT  
APPROACH  
CHART - ICAO**

**AERODROME ELEV 64 FT**  
HEIGHTS RELATED TO  
THR RWY17 - ELEV 43 FT

**SURAT THANI / Samui (VTSM)**  
**VOR RWY17**  
**CAT A, B**

Fix / Point		Coordinates	
(IAF) TEPAD	R-011 / 21.7D SMU	09° 54' 11.99" N	100° 07' 54.35" E
(IF) OSNIX	R-354 / 13.0D SMU	09° 45' 48.80" N	100° 02' 19.70" E
SM182	R-354 / 10.4D SMU	09° 43' 12.94" N	100° 02' 36.22" E
(FAF) SM181	R-354 / 7.8D SMU	09° 40' 37.07" N	100° 02' 52.74" E
(SDF) SM180	R-354 / 4.2D SMU	09° 37' 00.86" N	100° 03' 15.65" E
MAPt	R-354 / 0.5D SMU	09° 33' 19.09" N	100° 03' 39.13" E
(IAF) VOR	SMU	09° 32' 49.47" N	100° 03' 42.27" E



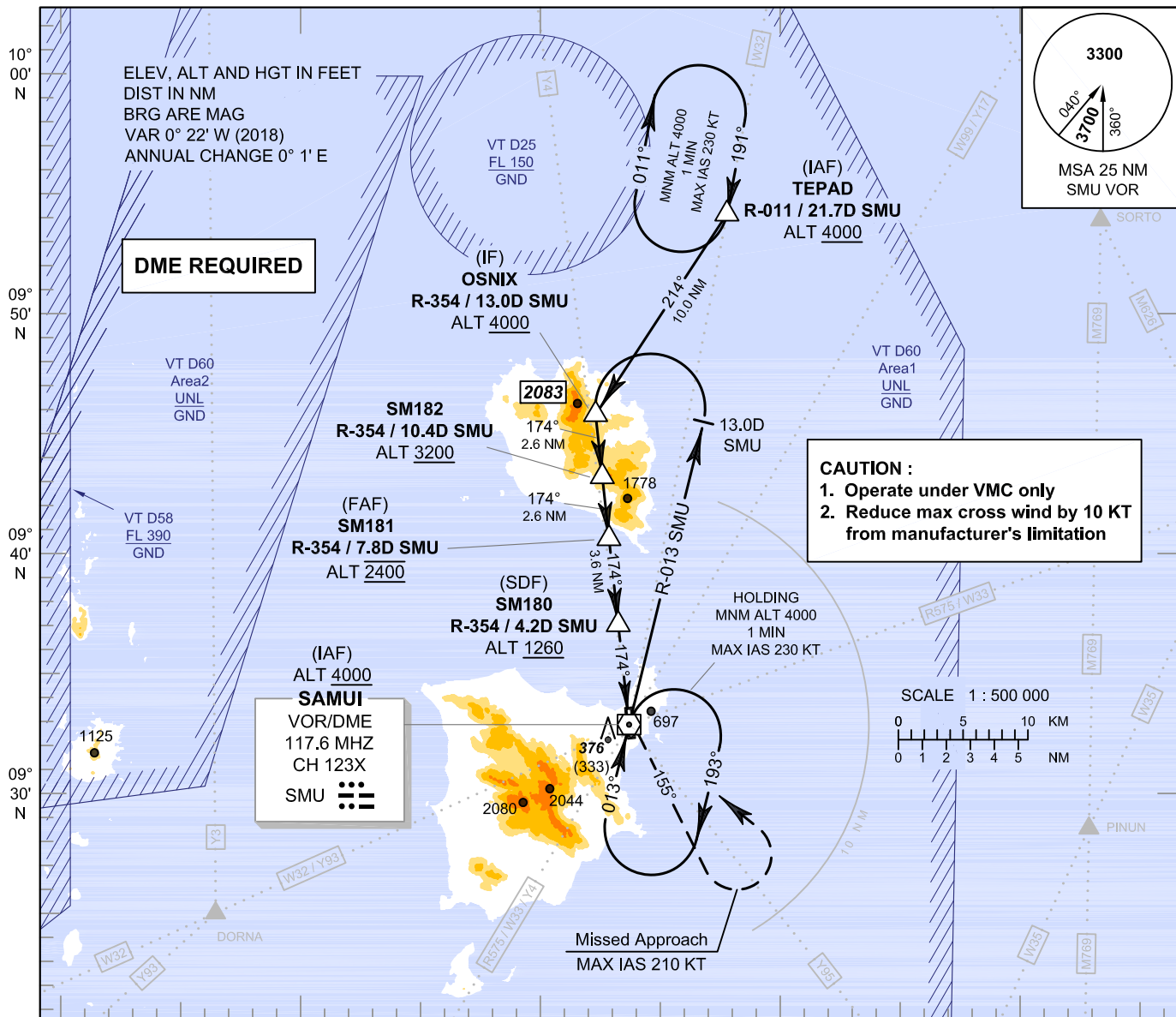


**INSTRUMENT  
APPROACH  
CHART - ICAO**

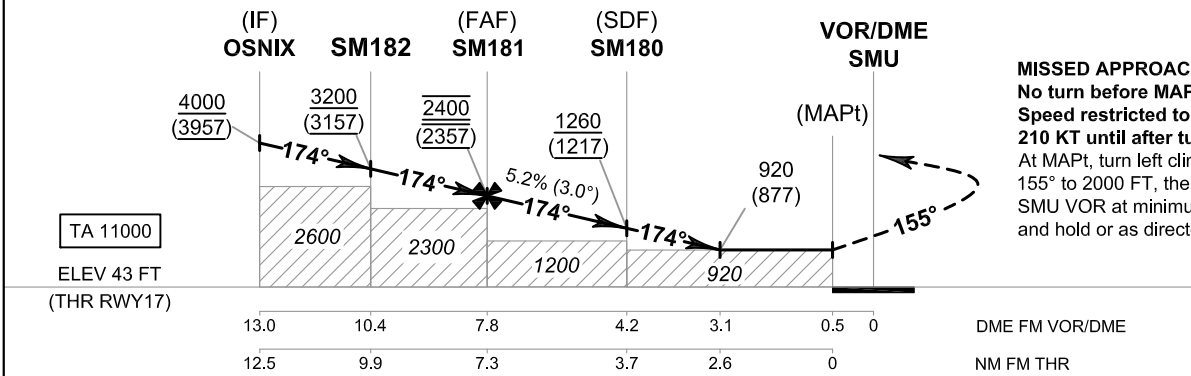
**AERODROME ELEV 64 FT  
HEIGHTS RELATED TO  
THR RWY17 - ELEV 43 FT**

APP : 129.6  
TWR : 118.9  
GND : 121.9  
ATIS : 128.6

**SURAT THANI / Samui (VTSM)  
VOR RWY17  
CAT C**



099° 40' E      099° 50' E      100° 00' E      100° 10' E      100° 20' E



OCA/H	C	Distance (SMU)	FAF	7 D	6 D	5 D	4 D	3.1 D
		Altitude (Height)	2400 (2357)	2145 (2102)	1830 (1787)	1515 (1472)	1200 (1157)	920 (877)
Straight - in Approach	920 (877)	Ground Speed	knot	70	90	100	120	140
Circling* (OCH AAL)	1400 (1336)	Rate of Descent	ft/min	369	474	527	632	737
* FOR CIRCLING RESTRICTIONS SEE VERSO.				843				

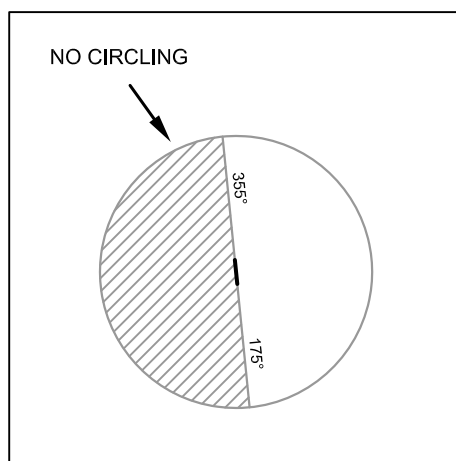
CHANGE: NEW PROCEDURES. INTERMEDIATE APPROACH SEGMENT - NO HORIZONTAL DISTANCE 1.5 NM DUE TO TERRAIN RESTRICTIONS.

**INSTRUMENT  
APPROACH  
CHART - ICAO**

**AERODROME ELEV 64 FT**  
HEIGHTS RELATED TO  
THR RWY17 - ELEV 43 FT

**SURAT THANI / Samui (VTSM)**  
**VOR RWY17**  
**CAT C**

Fix / Point		Coordinates	
(IAF) TEPAD	R-011 / 21.7D SMU	09° 54' 11.99" N	100° 07' 54.35" E
(IF) OSNIX	R-354 / 13.0D SMU	09° 45' 48.80" N	100° 02' 19.70" E
SM182	R-354 / 10.4D SMU	09° 43' 12.94" N	100° 02' 36.22" E
(FAF) SM181	R-354 / 7.8D SMU	09° 40' 37.07" N	100° 02' 52.74" E
(SDF) SM180	R-354 / 4.2D SMU	09° 37' 00.86" N	100° 03' 15.65" E
MAPt	R-354 / 0.5D SMU	09° 33' 19.09" N	100° 03' 39.13" E
(IAF) VOR	SMU	09° 32' 49.47" N	100° 03' 42.27" E

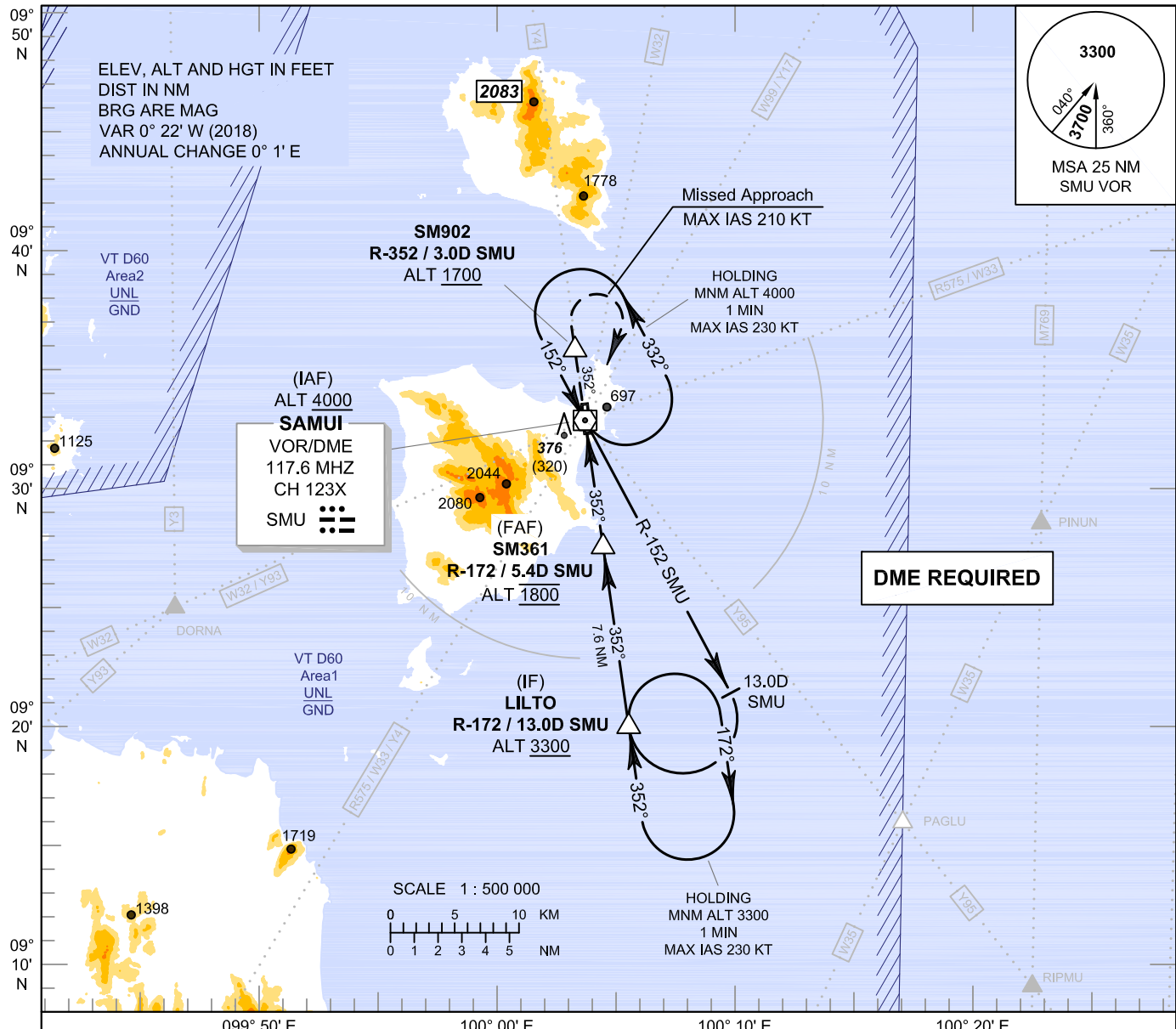


**INSTRUMENT APPROACH CHART - ICAO**

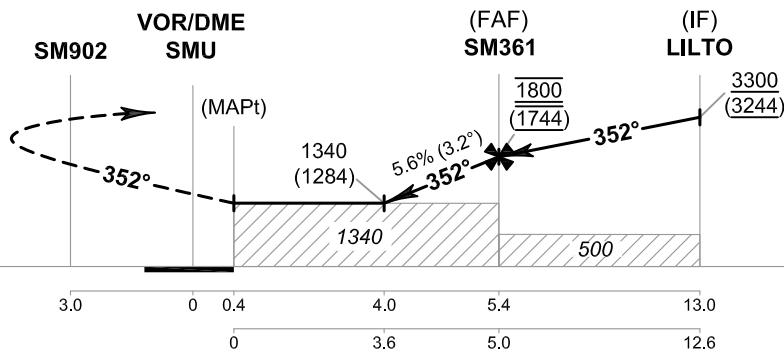
**AERODROME ELEV 64 FT**  
HEIGHTS RELATED TO  
THR RWY35 - ELEV 56 FT

APP : 129.6  
TWR : 118.9  
GND : 121.9  
ATIS : 128.6

**SURAT THANI / Samui (VTSM)**  
**VOR RWY35**  
**CAT A, B**



**MISSED APPROACH :**  
No turn before MAPt.  
Speed restricted to MAX IAS 210 KT until after turn.  
Climb on track 352° to SM902, then turn right to SMU VOR at minimum 4000 FT and hold or as directed by ATC.



DME FM VOR/DME	3.0	0	0.4	4.0	5.4	13.0
NM FM THR			0	3.6	5.0	12.6

OCA/H	A	B	Distance (SMU)		4 D	5 D	FAF				
	1340 (1284)		Altitude (Height)		1340 (1284)	1670 (1614)	1800 (1744)				
Straight - in Approach	1340 (1284)		Ground Speed		knot	70	90	100	120	140	160
Circling* (OCH AAL)	1400 (1336)		Rate of Descent		ft/min	397	510	567	681	794	907
* FOR CIRCLING RESTRICTIONS SEE VERSO.											

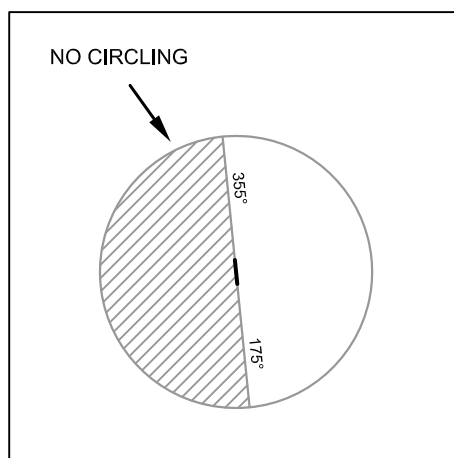
CHANGE: NEW PROCEDURES.

**INSTRUMENT  
APPROACH  
CHART - ICAO**

**AERODROME ELEV 64 FT**  
HEIGHTS RELATED TO  
THR RWY35 - ELEV 56 FT

**SURAT THANI / Samui (VTSM)**  
**VOR RWY35**  
**CAT A, B**

Fix / Point		Coordinates	
(IAF) VOR	SMU	09° 32' 49.47" N	100° 03' 42.27" E
(IF) LILTO	R-172 / 13.0D SMU	09° 19' 53.35" N	100° 05' 31.31" E
(FAF) SM361	R-172 / 5.4D SMU	09° 27' 28.88" N	100° 04' 27.33" E
MAPt	R-172 / 0.4D SMU	09° 32' 27.20" N	100° 03' 45.40" E
SM902	R-352 / 3.0D SMU	09° 35' 48.57" N	100° 03' 17.09" E

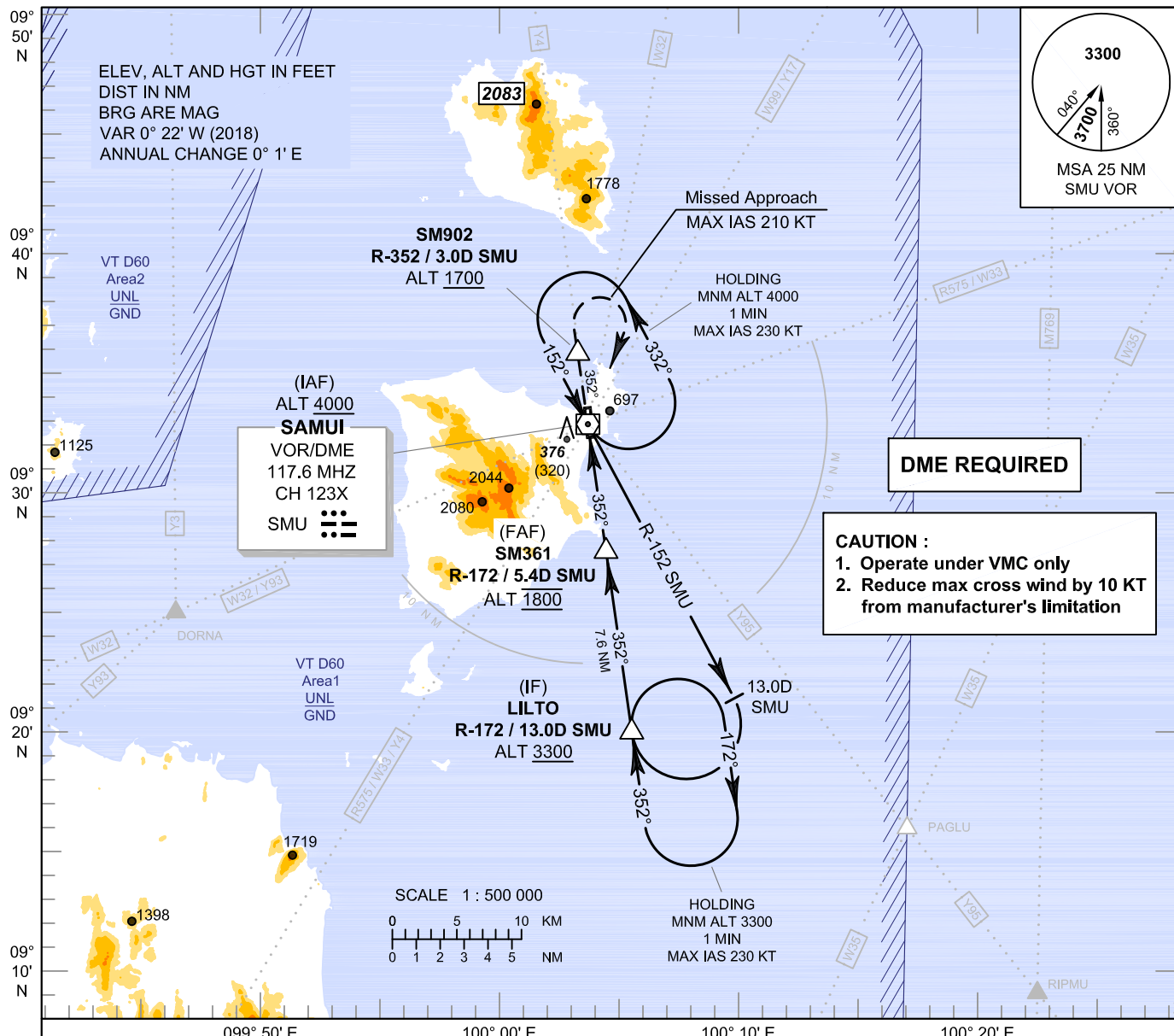


**INSTRUMENT APPROACH CHART - ICAO**

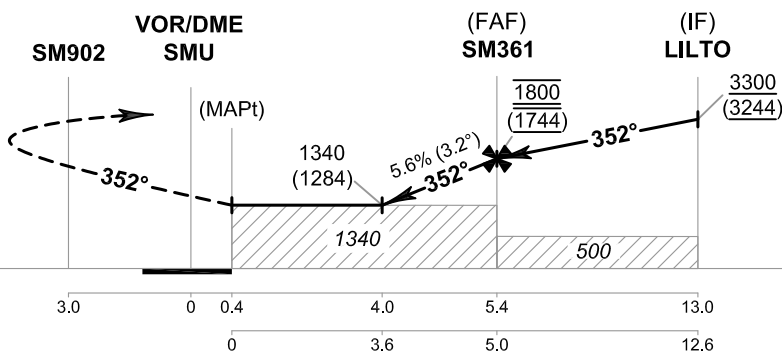
**AERODROME ELEV 64 FT**  
HEIGHTS RELATED TO  
THR RWY35 - ELEV 56 FT

APP : 129.6  
TWR : 118.9  
GND : 121.9  
ATIS : 128.6

**SURAT THANI / Samui (VTSM)**  
**VOR RWY35**  
**CAT C**



**MISSED APPROACH :**  
No turn before MAPt.  
Speed restricted to MAX IAS 210 KT until after turn.  
Climb on track 352° to SM902, then turn right to SMU VOR at minimum 4000 FT and hold or as directed by ATC.



DME FM VOR/DME	3.0	0	0.4	4.0	5.4	13.0
NM FM THR			0	3.6	5.0	12.6

OCA/H	C	Distance (SMU)	4 D	5 D	FAF				
Straight - in Approach	1340 (1284)	Altitude (Height)	1340 (1284)	1670 (1614)	1800 (1744)				
		Ground Speed	knot	70	90	100	120	140	160
Circling* (OCH AAL)	1400 (1336)	Rate of Descent	ft/min	397	510	567	681	794	907
* FOR CIRCLING RESTRICTIONS SEE VERSO.									

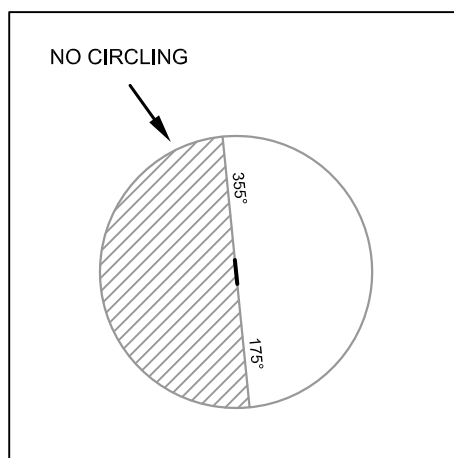
CHANGE: NEW PROCEDURES.

**INSTRUMENT  
APPROACH  
CHART - ICAO**

**AERODROME ELEV 64 FT**  
HEIGHTS RELATED TO  
THR RWY35 - ELEV 56 FT

**SURAT THANI / Samui (VTSM)**  
**VOR RWY35**  
**CAT C**

Fix / Point		Coordinates	
(IAF) VOR	SMU	09° 32' 49.47" N	100° 03' 42.27" E
(IF) LILTO	R-172 / 13.0D SMU	09° 19' 53.35" N	100° 05' 31.31" E
(FAF) SM361	R-172 / 5.4D SMU	09° 27' 28.88" N	100° 04' 27.33" E
MAPt	R-172 / 0.4D SMU	09° 32' 27.20" N	100° 03' 45.40" E
SM902	R-352 / 3.0D SMU	09° 35' 48.57" N	100° 03' 17.09" E



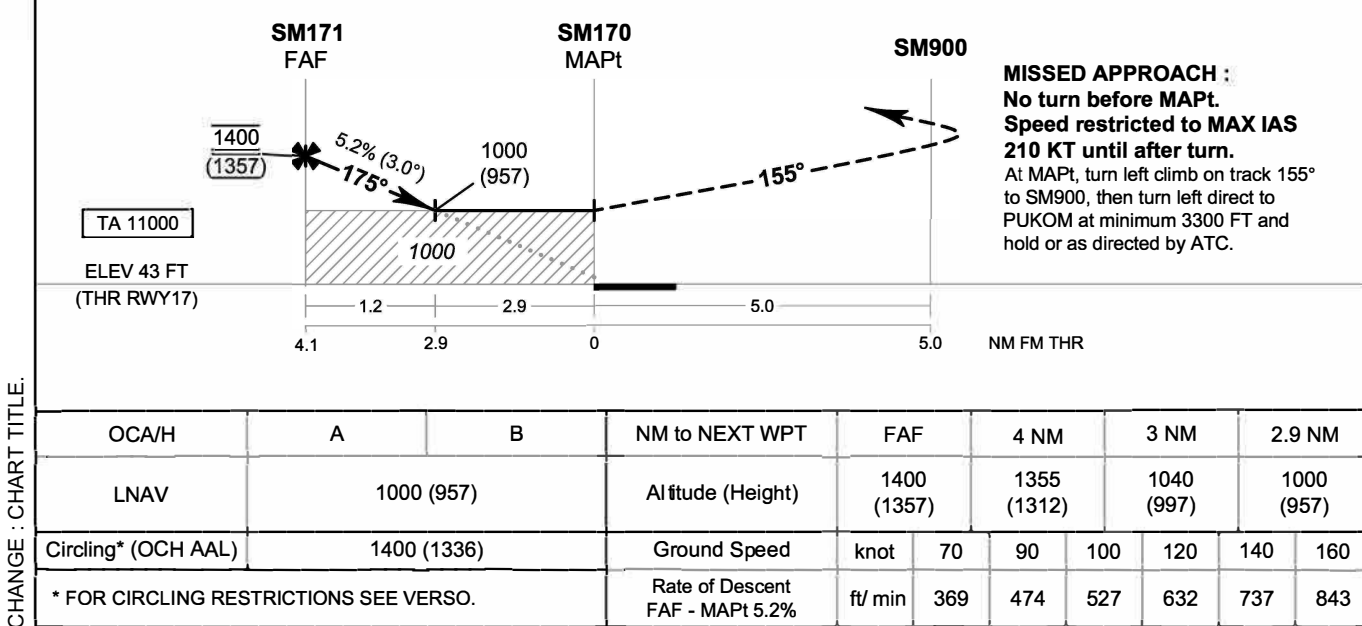
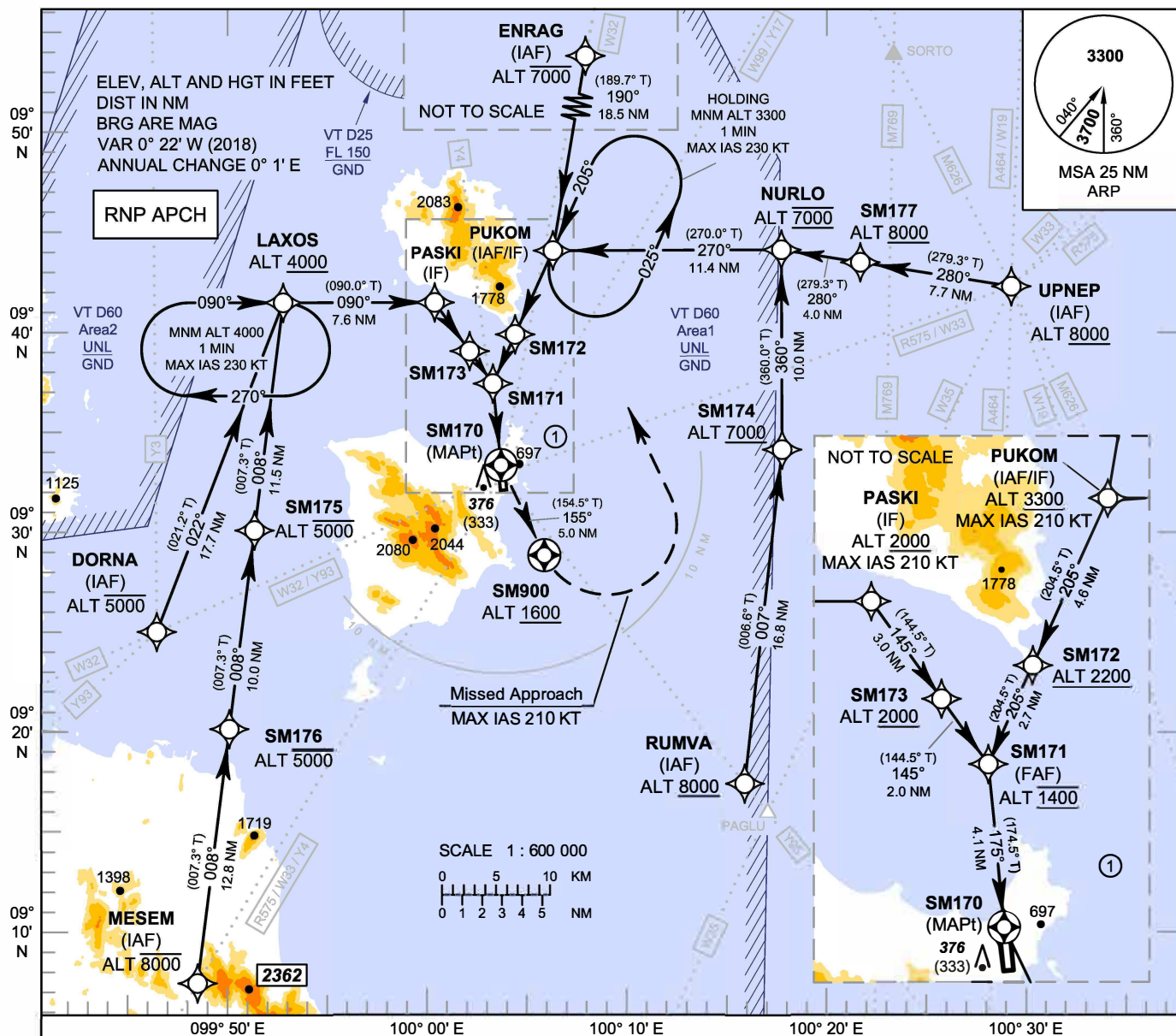


**INSTRUMENT  
APPROACH  
CHART - ICAO**

**AERODROME ELEV 64 FT  
HEIGHTS RELATED TO  
THR RWY17 - ELEV 43 FT**

APP : 129.6  
TWR : 118.9  
GND : 121.9  
ATIS : 128.6

**SURAT THANI / Samui (VTSM)  
RNP RWY17  
CAT A, B**



CHANGE : CHART TITLE.

**INSTRUMENT  
APPROACH  
CHART - ICAO**

**AERODROME ELEV 64 FT  
HEIGHTS RELATED TO  
THR RWY17 - ELEV 43 FT**

**SURAT THANI / Samui (VTSM)  
RNP RWY17  
CAT A, B**

**TABULAR DESCRIPTION**

**RNP RWY17**

Serial Number	Path Descriptor	Waypoint Identifier	Flyover	Course ° M (° T)	Magnetic Variation	Distance (NM)	Turn Direction	Altitude (FT)	Speed (KT)	VPA/ TCH	Navigation Specification
010	IF	RUMVA (IAF)	-	-	+0.33	-	-	+8000	-	-	RNP APCH
020	TF	SM174	-	007°(006.6°)	+0.33	16.8	L	+7000	-	-	RNP APCH
030	TF	NURLO	-	360°(360.0°)	+0.33	10.0	L	@7000	-	-	RNP APCH
040	TF	PUKOM (IAF/IF)	-	270°(270.0°)	+0.33	11.4	L	+3300	-210	-	RNP APCH
050	TF	SM172	-	205°(204.5°)	+0.33	4.6	-	+2200	-	-	RNP APCH
060	TF	SM171 (FAF)	-	205°(204.5°)	+0.33	2.7	-	@1400	-	-	RNP APCH
010	IF	UPNEP (IAF)	-	-	+0.33	-	-	+8000	-	-	RNP APCH
020	TF	SM177	-	280°(279.3°)	+0.33	7.7	-	+8000	-	-	RNP APCH
030	TF	NURLO	-	280°(279.3°)	+0.33	4.0	L	@7000	-	-	RNP APCH
040	TF	PUKOM (IAF/IF)	-	270°(270.0°)	+0.33	11.4	L	+3300	-210	-	RNP APCH
050	TF	SM172	-	205°(204.5°)	+0.33	4.6	-	+2200	-	-	RNP APCH
060	TF	SM171 (FAF)	-	205°(204.5°)	+0.33	2.7	-	@1400	-	-	RNP APCH
010	IF	ENRAG (IAF)	-	-	+0.33	-	-	-7000	-	-	RNP APCH
020	TF	PUKOM (IAF/IF)	-	190°(189.7°)	+0.33	18.5	R	+3300	-210	-	RNP APCH
030	TF	SM172	-	205°(204.5°)	+0.33	4.6	-	+2200	-	-	RNP APCH
040	TF	SM171 (FAF)	-	205°(204.5°)	+0.33	2.7	-	@1400	-	-	RNP APCH
010	IF	MESEM (IAF)	-	-	+0.33	-	-	-8000	-	-	RNP APCH
020	TF	SM176	-	008°(007.3°)	+0.33	12.8	-	-5000	-	-	RNP APCH
030	TF	SM175	-	008°(007.3°)	+0.33	10.0	-	-5000	-	-	RNP APCH
040	TF	LAXOS	-	008°(007.3°)	+0.33	11.5	R	+4000	-	-	RNP APCH
050	TF	PASKI (IF)	-	090°(090.0°)	+0.33	7.6	R	+2000	-210	-	RNP APCH
060	TF	SM173	-	145°(144.5°)	+0.33	3.0	-	+2000	-	-	RNP APCH
070	TF	SM171 (FAF)	-	145°(144.5°)	+0.33	2.0	-	@1400	-	-	RNP APCH
010	IF	DORNA (IAF)	-	-	+0.33	-	-	-5000	-	-	RNP APCH
020	TF	LAXOS	-	022°(021.2°)	+0.33	17.7	R	+4000	-	-	RNP APCH
030	TF	PASKI (IF)	-	090°(090.0°)	+0.33	7.6	R	+2000	-210	-	RNP APCH
040	TF	SM173	-	145°(144.5°)	+0.33	3.0	-	+2000	-	-	RNP APCH
050	TF	SM171 (FAF)	-	145°(144.5°)	+0.33	2.0	-	@1400	-	-	RNP APCH
010	IF	PUKOM (IAF/IF)	-	-	+0.33	-	-	+3300	-210	-	RNP APCH
020	TF	SM172	-	205°(204.5°)	+0.33	4.6	-	+2200	-	-	RNP APCH
030	TF	SM171 (FAF)	-	205°(204.5°)	+0.33	2.7	-	@1400	-	-	RNP APCH
010	IF	SM171 (FAF)	-	-	+0.33	-	-	@1400	-	-	RNP APCH
020	TF	SM170 (MAPt)	Y	175°(174.5°)	+0.33	4.1	-	@93	-	-3.0 / 50	RNP APCH
030	TF	SM900	Y	155°(154.5°)	+0.33	5.0	L	+1600	-	-	RNP APCH
040	DF	PUKOM (IAF/IF)	-	-	+0.33	-	L	+3300	-210	-	RNP APCH
050	HM	PUKOM (IAF/IF)	Y	205°(204.5°)	+0.33	1 minute	L	+3300	-230	-	RNP APCH

CHANGE : CHART TITLE.



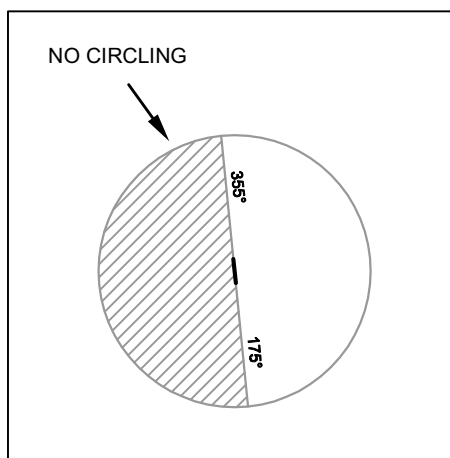
**INSTRUMENT  
APPROACH  
CHART - ICAO**

**AERODROME ELEV 64 FT  
HEIGHTS RELATED TO  
THR RWY17 - ELEV 43 FT**

**SURAT THANI / Samui (VTSM)  
RNP RWY17  
CAT A, B**

**WAYPOINT LIST**

RNP RWY17		
Waypoint Identifier	Coordinates	
DORNA	09° 24' 58.70" N	099° 46' 14.10" E
ENRAG	10° 02' 23.31" N	100° 09' 31.07" E
LAXOS	09° 41' 30.78" N	099° 52' 40.85" E
MESEM	09° 07' 19.05" N	099° 48' 15.85" E
NURLO	09° 44' 05.89" N	100° 17' 57.36" E
PASKI	09° 41' 30.69" N	100° 00' 21.81" E
PUKOM	09° 44' 05.87" N	100° 06' 22.07" E
RUMVA	09° 17' 16.93" N	100° 15' 59.72" E
SM170	09° 33' 19.40" N	100° 03' 42.26" E
SM171	09° 37' 25.40" N	100° 03' 18.29" E
SM172	09° 39' 53.52" N	100° 04' 26.25" E
SM173	09° 39' 03.52" N	100° 02' 07.71" E
SM174	09° 34' 03.10" N	100° 17' 57.17" E
SM175	09° 30' 04.04" N	099° 51' 12.06" E
SM176	09° 20' 06.14" N	099° 49' 54.83" E
SM177	09° 43' 27.23" N	100° 21' 57.26" E
SM900	09° 28' 47.41" N	100° 05' 53.06" E
UPNEP	09° 42' 13.10" N	100° 29' 36.40" E



CHANGE : CHART TITLE.

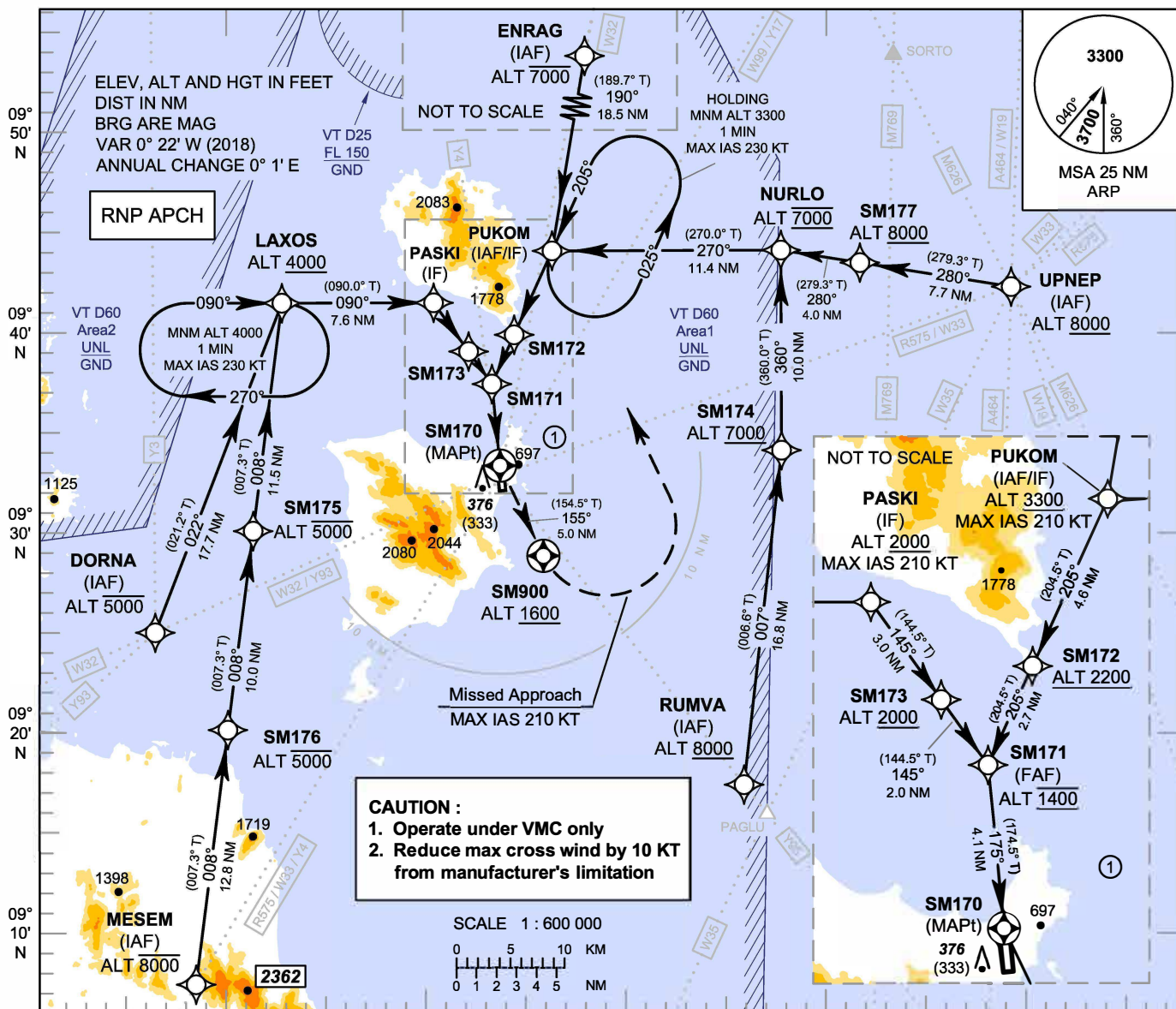
**INTENTIONALLY BLANK**

**INSTRUMENT APPROACH CHART - ICAO**

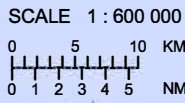
**AERODROME ELEV 64 FT**  
HEIGHTS RELATED TO THR RWY17 - ELEV 43 FT

APP : 129.6  
TWR : 118.9  
GND : 121.9  
ATIS : 128.6

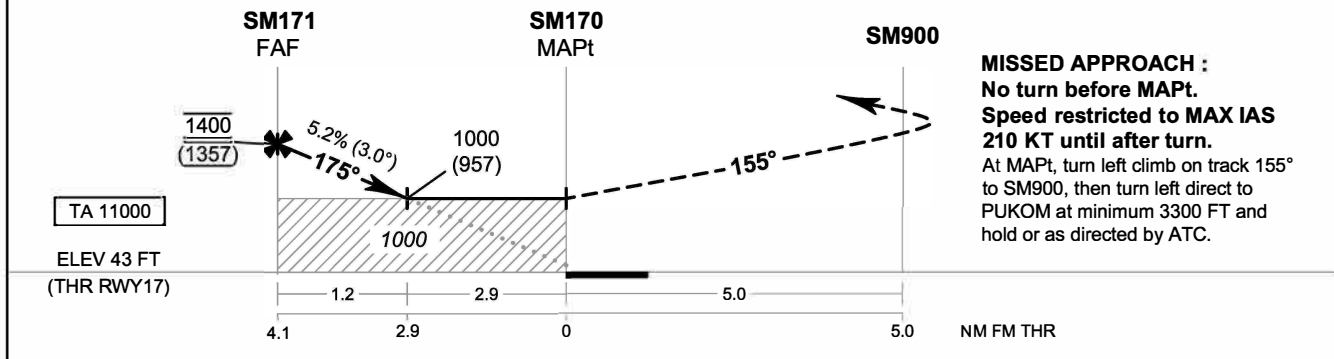
**SURAT THANI / Samui (VTSM)**  
**RNP RWY17**  
**CAT C**



**CAUTION :**  
1. Operate under VMC only  
2. Reduce max cross wind by 10 KT from manufacturer's limitation



099° 50' E      100° 00' E      100° 10' E      100° 20' E      100° 30' E



**MISSED APPROACH :**  
No turn before MAPt.  
Speed restricted to MAX IAS 210 KT until after turn.  
At MAPt, turn left climb on track 155° to SM900, then turn left direct to PUKOM at minimum 3300 FT and hold or as directed by ATC.

OCA/H	C	NM to NEXT WPT	FAF	4 NM	3 NM	2.9 NM			
LNAV	1000 (957)	Altitude (Height)	1400 (1357)	1355 (1312)	1040 (997)	1000 (957)			
Circling* (OCH AAL)	1400 (1336)	Ground Speed	knot	70	90	100	120	140	160
* FOR CIRCLING RESTRICTIONS SEE VERSO.		Rate of Descent FAF - MAPt 5.2%	ft/min	369	474	527	632	737	843

CHANGE : CHART TITLE.

**INSTRUMENT  
APPROACH  
CHART - ICAO**

**AERODROME ELEV 64 FT  
HEIGHTS RELATED TO  
THR RWY17 - ELEV 43 FT**

**SURAT THANI / Samui (VTSM)  
RNP RWY17  
CAT C**

**TABULAR DESCRIPTION**

RNP RWY17											
Serial Number	Path Descriptor	Waypoint Identifier	Flyover	Course ° M (° T)	Magnetic Variation	Distance (NM)	Turn Direction	Altitude (FT)	Speed (KT)	VPA/ TCH	Navigation Specification
010	IF	RUMVA (IAF)	-	-	+0.33	-	-	+8000	-	-	RNP APCH
020	TF	SM174	-	007°(006.6°)	+0.33	16.8	L	+7000	-	-	RNP APCH
030	TF	NURLO	-	360°(360.0°)	+0.33	10.0	L	@7000	-	-	RNP APCH
040	TF	PUKOM (IAF/IF)	-	270°(270.0°)	+0.33	11.4	L	+3300	-210	-	RNP APCH
050	TF	SM172	-	205°(204.5°)	+0.33	4.6	-	+2200	-	-	RNP APCH
060	TF	SM171 (FAF)	-	205°(204.5°)	+0.33	2.7	-	@1400	-	-	RNP APCH
010	IF	UPNEP (IAF)	-	-	+0.33	-	-	+8000	-	-	RNP APCH
020	TF	SM177	-	280°(279.3°)	+0.33	7.7	-	+8000	-	-	RNP APCH
030	TF	NURLO	-	280°(279.3°)	+0.33	4.0	L	@7000	-	-	RNP APCH
040	TF	PUKOM (IAF/IF)	-	270°(270.0°)	+0.33	11.4	L	+3300	-210	-	RNP APCH
050	TF	SM172	-	205°(204.5°)	+0.33	4.6	-	+2200	-	-	RNP APCH
060	TF	SM171 (FAF)	-	205°(204.5°)	+0.33	2.7	-	@1400	-	-	RNP APCH
010	IF	ENRAG (IAF)	-	-	+0.33	-	-	-7000	-	-	RNP APCH
020	TF	PUKOM (IAF/IF)	-	190°(189.7°)	+0.33	18.5	R	+3300	-210	-	RNP APCH
030	TF	SM172	-	205°(204.5°)	+0.33	4.6	-	+2200	-	-	RNP APCH
040	TF	SM171 (FAF)	-	205°(204.5°)	+0.33	2.7	-	@1400	-	-	RNP APCH
010	IF	MESEM (IAF)	-	-	+0.33	-	-	-8000	-	-	RNP APCH
020	TF	SM176	-	008°(007.3°)	+0.33	12.8	-	-5000	-	-	RNP APCH
030	TF	SM175	-	008°(007.3°)	+0.33	10.0	-	-5000	-	-	RNP APCH
040	TF	LAXOS	-	008°(007.3°)	+0.33	11.5	R	+4000	-	-	RNP APCH
050	TF	PASKI (IF)	-	090°(090.0°)	+0.33	7.6	R	+2000	-210	-	RNP APCH
060	TF	SM173	-	145°(144.5°)	+0.33	3.0	-	+2000	-	-	RNP APCH
070	TF	SM171 (FAF)	-	145°(144.5°)	+0.33	2.0	-	@1400	-	-	RNP APCH
010	IF	DORNA (IAF)	-	-	+0.33	-	-	-5000	-	-	RNP APCH
020	TF	LAXOS	-	022°(021.2°)	+0.33	17.7	R	+4000	-	-	RNP APCH
030	TF	PASKI (IF)	-	090°(090.0°)	+0.33	7.6	R	+2000	-210	-	RNP APCH
040	TF	SM173	-	145°(144.5°)	+0.33	3.0	-	+2000	-	-	RNP APCH
050	TF	SM171 (FAF)	-	145°(144.5°)	+0.33	2.0	-	@1400	-	-	RNP APCH
010	IF	PUKOM (IAF/IF)	-	-	+0.33	-	-	+3300	-210	-	RNP APCH
020	TF	SM172	-	205°(204.5°)	+0.33	4.6	-	+2200	-	-	RNP APCH
030	TF	SM171 (FAF)	-	205°(204.5°)	+0.33	2.7	-	@1400	-	-	RNP APCH
010	IF	SM171 (FAF)	-	-	+0.33	-	-	@1400	-	-	RNP APCH
020	TF	SM170 (MAPt)	Y	175°(174.5°)	+0.33	4.1	-	@93	-	-3.0 / 50	RNP APCH
030	TF	SM900	Y	155°(154.5°)	+0.33	5.0	L	+1600	-	-	RNP APCH
040	DF	PUKOM (IAF/IF)	-	-	+0.33	-	L	+3300	-210	-	RNP APCH
050	HM	PUKOM (IAF/IF)	Y	205°(204.5°)	+0.33	1 minute	L	+3300	-230	-	RNP APCH

CHANGE : CHART TITLE.

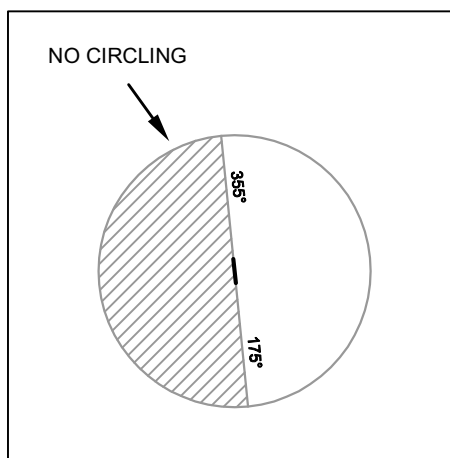
**INSTRUMENT  
APPROACH  
CHART - ICAO**

**AERODROME ELEV 64 FT  
HEIGHTS RELATED TO  
THR RWY17 - ELEV 43 FT**

**SURAT THANI / Samui (VTSM)  
RNP RWY17  
CAT C**

**WAYPOINT LIST**

RNP RWY17		
Waypoint Identifier	Coordinates	
DORNA	09° 24' 58.70" N	099° 46' 14.10" E
ENRAG	10° 02' 23.31" N	100° 09' 31.07" E
LAXOS	09° 41' 30.78" N	099° 52' 40.85" E
MESEM	09° 07' 19.05" N	099° 48' 15.85" E
NURLO	09° 44' 05.89" N	100° 17' 57.36" E
PASKI	09° 41' 30.69" N	100° 00' 21.81" E
PUKOM	09° 44' 05.87" N	100° 06' 22.07" E
RUMVA	09° 17' 16.93" N	100° 15' 59.72" E
SM170	09° 33' 19.40" N	100° 03' 42.26" E
SM171	09° 37' 25.40" N	100° 03' 18.29" E
SM172	09° 39' 53.52" N	100° 04' 26.25" E
SM173	09° 39' 03.52" N	100° 02' 07.71" E
SM174	09° 34' 03.10" N	100° 17' 57.17" E
SM175	09° 30' 04.04" N	099° 51' 12.06" E
SM176	09° 20' 06.14" N	099° 49' 54.83" E
SM177	09° 43' 27.23" N	100° 21' 57.26" E
SM900	09° 28' 47.41" N	100° 05' 53.06" E
UPNEP	09° 42' 13.10" N	100° 29' 36.40" E



CHANGE : CHART TITLE.

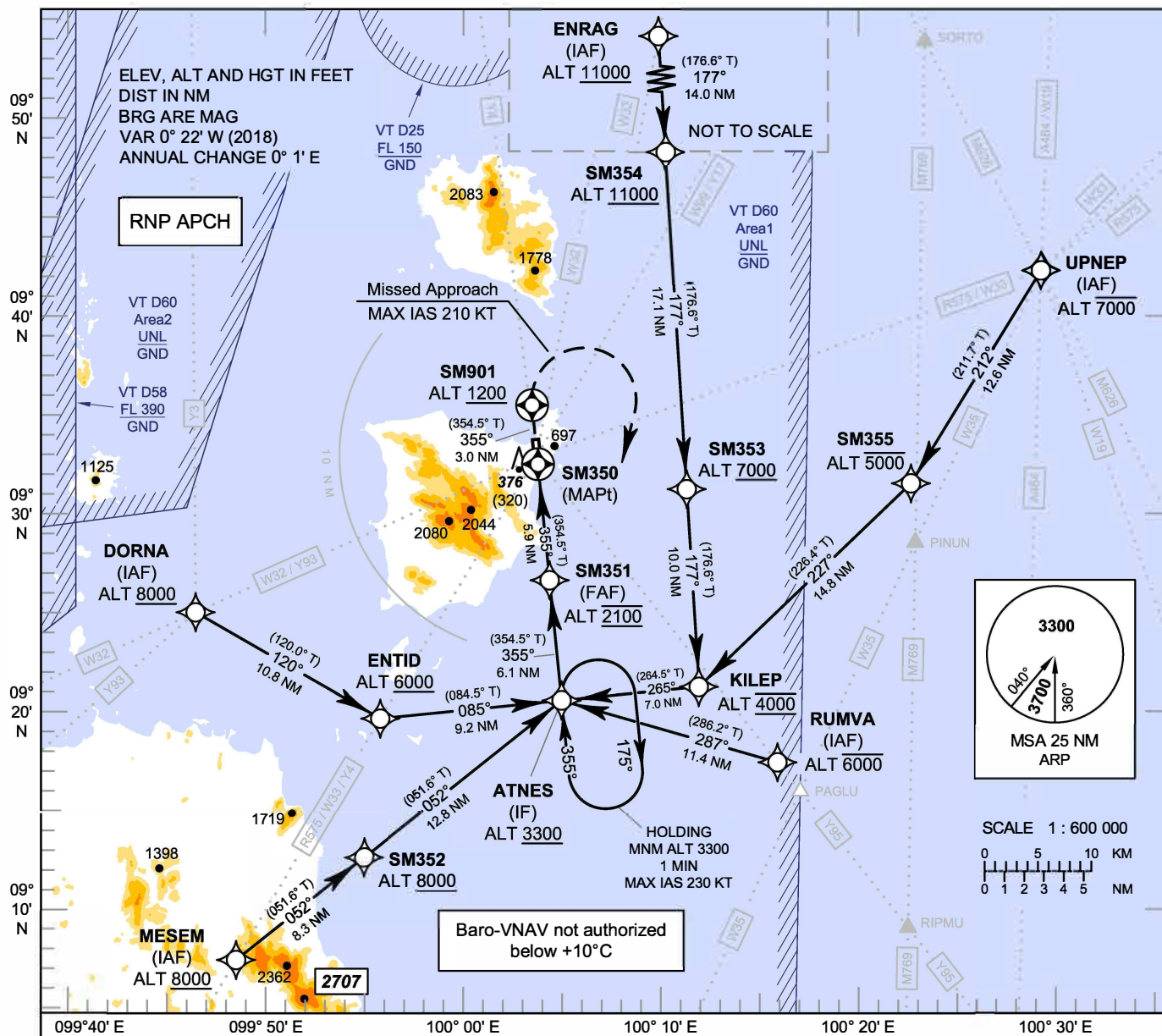
**INTENTIONALLY BLANK**

**INSTRUMENT  
APPROACH  
CHART - ICAO**

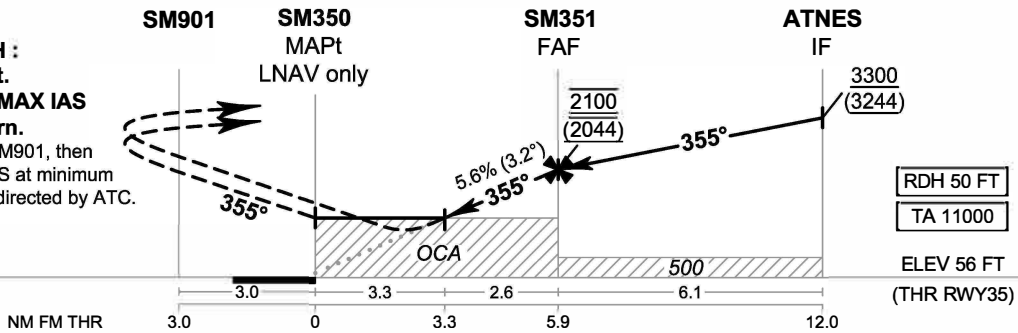
**AERODROME ELEV 64 FT  
HEIGHTS RELATED TO  
THR RWY35 - ELEV 56 FT**

APP : 129.6  
TWR : 118.9  
GND : 121.9  
ATIS : 128.6

**SURAT THANI / Samui (VTSM)  
RNP RWY35  
CAT A, B**



**MISSED APPROACH :**  
No turn before MAPt.  
Speed restricted to MAX IAS 210 KT until after turn.  
Climb on track 355° to SM901, then turn right direct to ATNES at minimum 3300 FT and hold or as directed by ATC.



CHANGE : CHART TITLE.

OCA/H	A	B	NM to NEXT WPT	3.3 NM	4 NM	5 NM	FAF
LNAV/VNAV	1120 (1064)		Altitude (Height)	1220 (1164)	1470 (1414)	1810 (1754)	2100 (2044)
LNAV	1220 (1164)		Ground Speed	knot 70	90	100	120 140 160
Circling* (OCH AAL)	1400 (1336)		Rate of Descent FAF - MAPt 5.6%	ft/min 397	510	567	681 794 907

**INSTRUMENT  
APPROACH  
CHART - ICAO**

**AERODROME ELEV 64 FT  
HEIGHTS RELATED TO  
THR RWY35 - ELEV 56 FT**

**SURAT THANI / Samui (VTSM)  
RNP RWY35  
CAT A, B**

**TABULAR DESCRIPTION**

RNP RWY35											
Serial Number	Path Descriptor	Waypoint Identifier	Flyover	Course ° M (° T)	Magnetic Variation	Distance (NM)	Turn Direction	Altitude (FT)	Speed (KT)	VPA/ TCH	Navigation Specification
010	IF	UPNEP (IAF)	-	-	+0.33	-	-	-7000	-	-	RNP APCH
020	TF	SM355	-	212°(211.7°)	+0.33	12.6	R	-5000	-	-	RNP APCH
030	TF	KILEP	-	227°(226.4°)	+0.33	14.8	R	@4000	-	-	RNP APCH
040	TF	ATNES (IF)	-	265°(264.5°)	+0.33	7.0	-	+3300	-	-	RNP APCH
010	IF	ENRAG (IAF)	-	-	+0.33	-	-	+11000	-	-	RNP APCH
020	TF	SM354	-	177°(176.6°)	+0.33	14.0	-	+11000	-	-	RNP APCH
030	TF	SM353	-	177°(176.6°)	+0.33	17.1	-	+7000	-	-	RNP APCH
040	TF	KILEP	-	177°(176.6°)	+0.33	10.0	R	@4000	-	-	RNP APCH
050	TF	ATNES (IF)	-	265°(264.5°)	+0.33	7.0	-	+3300	-	-	RNP APCH
010	IF	RUMVA (IAF)	-	-	+0.33	-	-	-6000	-	-	RNP APCH
020	TF	ATNES (IF)	-	287°(286.2°)	+0.33	11.4	-	+3300	-	-	RNP APCH
010	IF	MESEM (IAF)	-	-	+0.33	-	-	+8000	-	-	RNP APCH
020	TF	SM352	-	052°(051.6°)	+0.33	8.3	-	+8000	-	-	RNP APCH
030	TF	ATNES (IF)	-	052°(051.6°)	+0.33	12.8	-	+3300	-	-	RNP APCH
010	IF	DORNA (IAF)	-	-	+0.33	-	-	+8000	-	-	RNP APCH
020	TF	ENTID	-	120°(120.0°)	+0.33	10.8	L	+6000	-	-	RNP APCH
030	TF	ATNES (IF)	-	085°(084.5°)	+0.33	9.2	-	+3300	-	-	RNP APCH
010	IF	ATNES (IF)	-	-	+0.33	-	-	+3300	-	-	RNP APCH
020	TF	SM351 (FAF)	-	355°(354.5°)	+0.33	6.1	-	@2100	-	-	RNP APCH
030	TF	SM350 (MAPt)	Y	355°(354.5°)	+0.33	5.9	-	@106	-	-3.2 / 50	RNP APCH
040	TF	SM901	Y	355°(354.5°)	+0.33	3.0	-	+1200	-	-	RNP APCH
050	DF	ATNES (IF)	-	-	+0.33	-	R	+3300	-210	-	RNP APCH
060	HM	ATNES (IF)	Y	355°(354.5°)	+0.33	1 minute	R	+3300	-230	-	RNP APCH

CHANGE : CHART TITLE.



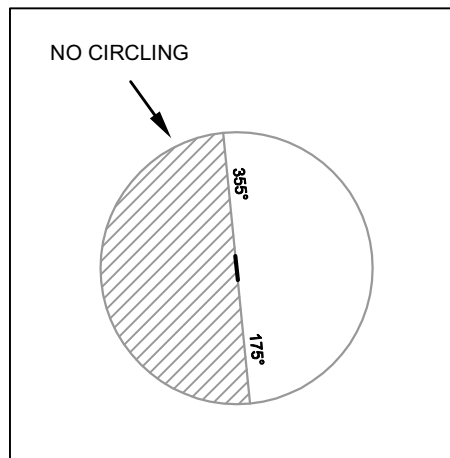
**INSTRUMENT  
APPROACH  
CHART - ICAO**

**AERODROME ELEV 64 FT  
HEIGHTS RELATED TO  
THR RWY35 - ELEV 56 FT**

**SURAT THANI / Samui (VTSM)  
RNP RWY35  
CAT A, B**

**WAYPOINT LIST**

RNP RWY35		
Waypoint Identifier	Coordinates	
ATNES	09° 20' 27.55" N	100° 04' 57.39" E
DORNA	09° 24' 58.70" N	099° 46' 14.10" E
ENRAG	10° 02' 23.31" N	100° 09' 31.07" E
ENTID	09° 19' 33.96" N	099° 55' 40.38" E
KILEP	09° 21' 08.06" N	100° 12' 00.28" E
MESEM	09° 07' 19.05" N	099° 48' 15.85" E
RUMVA	09° 17' 16.93" N	100° 15' 59.72" E
SM350	09° 32' 27.55" N	100° 03' 47.31" E
SM351	09° 26' 33.55" N	100° 04' 21.78" E
SM352	09° 12' 29.52" N	099° 54' 49.95" E
SM353	09° 31' 09.79" N	100° 11' 24.06" E
SM354	09° 48' 20.10" N	100° 10' 21.97" E
SM355	09° 31' 25.18" N	100° 22' 53.12" E
SM901	09° 35' 27.55" N	100° 03' 29.78" E
UPNEP	09° 42' 13.10" N	100° 29' 36.40" E



CHANGE : CHART TITLE.

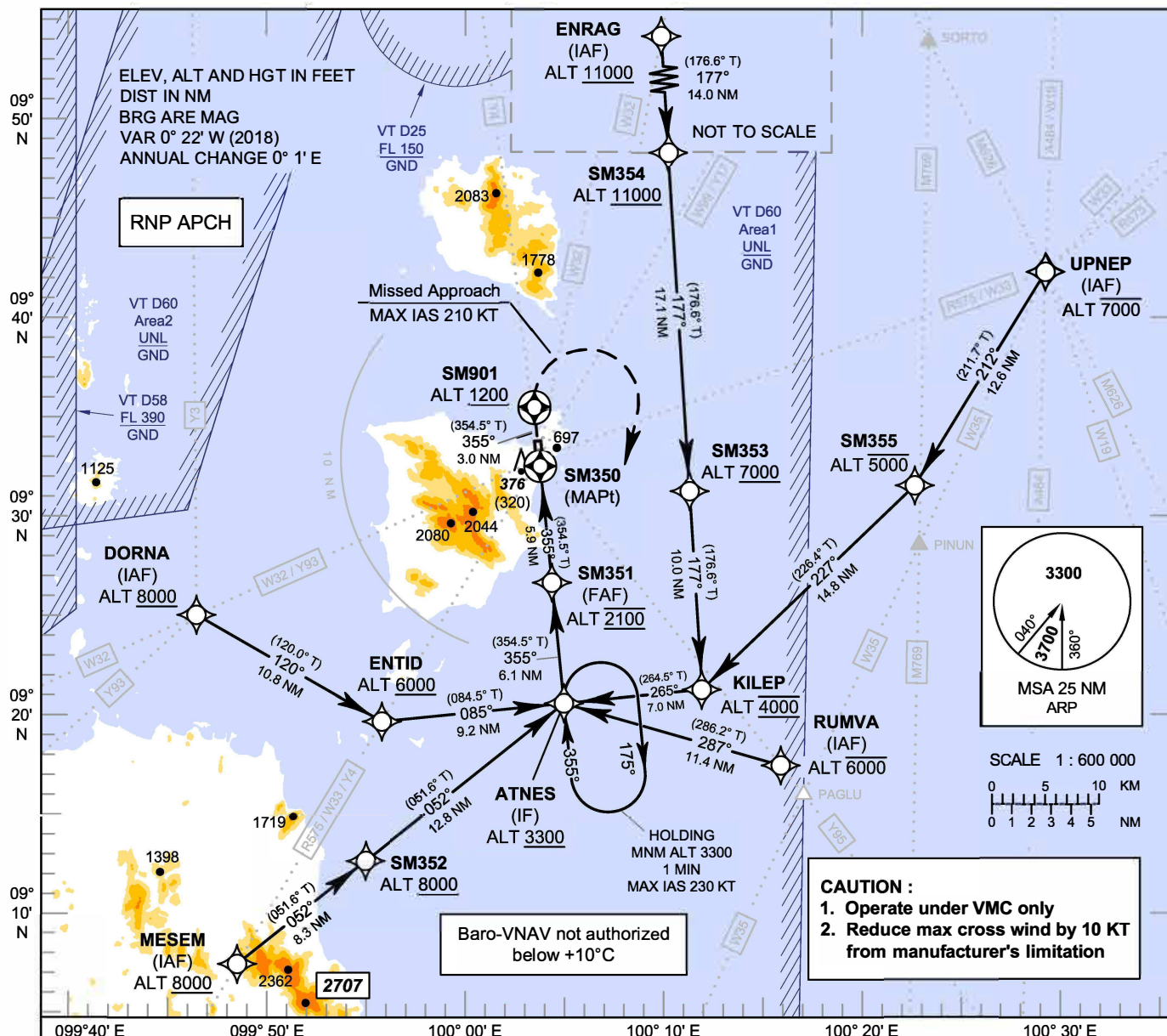
**INTENTIONALLY BLANK**

**INSTRUMENT  
APPROACH  
CHART - ICAO**

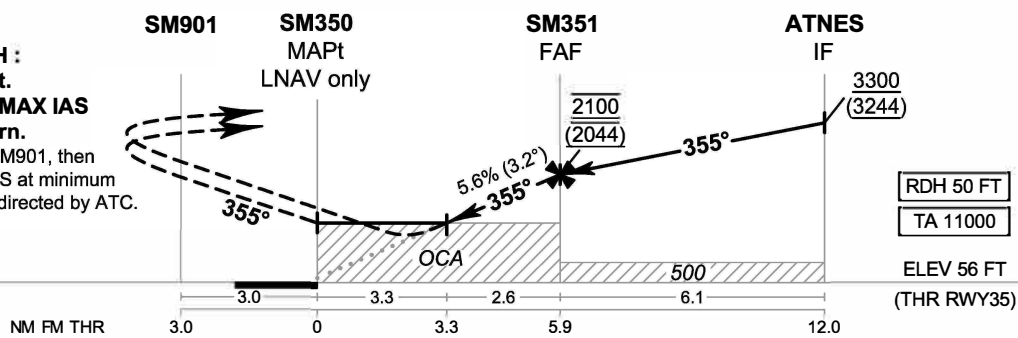
**AERODROME ELEV 64 FT  
HEIGHTS RELATED TO  
THR RWY35 - ELEV 56 FT**

APP : 129.6  
TWR : 118.9  
GND : 121.9  
ATIS : 128.6

**SURAT THANI / Samui (VTSM)  
RNP RWY35  
CAT C**



**MISSED APPROACH :**  
No turn before MAPt.  
Speed restricted to MAX IAS 210 KT until after turn.  
Climb on track 355° to SM901, then turn right direct to ATNES at minimum 3300 FT and hold or as directed by ATC.



CHANGE : CHART TITLE.

OCA/H	C	NM to NEXT WPT	3.3 NM	4 NM	5 NM	FAF			
LNAV/VNAV	1120 (1064)	Altitude (Height)	1220 (1164)	1470 (1414)	1810 (1754)	2100 (2044)			
LNAV	1220 (1164)	Ground Speed	knot	70	90	100	120	140	160
Circling* (OCH AAL)	1400 (1336)	Rate of Descent FAF - MAPt 5.6%	ft/min	397	510	567	681	794	907
* FOR CIRCLING RESTRICTIONS SEE VERSO.									

**INSTRUMENT  
APPROACH  
CHART - ICAO**

**AERODROME ELEV 64 FT  
HEIGHTS RELATED TO  
THR RWY35 - ELEV 56 FT**

**SURAT THANI / Samui (VTSM)  
RNP RWY35  
CAT C**

**TABULAR DESCRIPTION**

RNP RWY35											
Serial Number	Path Descriptor	Waypoint Identifier	Flyover	Course ° M (° T)	Magnetic Variation	Distance (NM)	Turn Direction	Altitude (FT)	Speed (KT)	VPA/ TCH	Navigation Specification
010	IF	UPNEP (IAF)	-	-	+0.33	-	-	-7000	-	-	RNP APCH
020	TF	SM355	-	212°(211.7°)	+0.33	12.6	R	-5000	-	-	RNP APCH
030	TF	KILEP	-	227°(226.4°)	+0.33	14.8	R	@4000	-	-	RNP APCH
040	TF	ATNES (IF)	-	265°(264.5°)	+0.33	7.0	-	+3300	-	-	RNP APCH
010	IF	ENRAG (IAF)	-	-	+0.33	-	-	+11000	-	-	RNP APCH
020	TF	SM354	-	177°(176.6°)	+0.33	14.0	-	+11000	-	-	RNP APCH
030	TF	SM353	-	177°(176.6°)	+0.33	17.1	-	+7000	-	-	RNP APCH
040	TF	KILEP	-	177°(176.6°)	+0.33	10.0	R	@4000	-	-	RNP APCH
050	TF	ATNES (IF)	-	265°(264.5°)	+0.33	7.0	-	+3300	-	-	RNP APCH
010	IF	RUMVA (IAF)	-	-	+0.33	-	-	-6000	-	-	RNP APCH
020	TF	ATNES (IF)	-	287°(286.2°)	+0.33	11.4	-	+3300	-	-	RNP APCH
010	IF	MESEM (IAF)	-	-	+0.33	-	-	+8000	-	-	RNP APCH
020	TF	SM352	-	052°(051.6°)	+0.33	8.3	-	+8000	-	-	RNP APCH
030	TF	ATNES (IF)	-	052°(051.6°)	+0.33	12.8	-	+3300	-	-	RNP APCH
010	IF	DORNA (IAF)	-	-	+0.33	-	-	+8000	-	-	RNP APCH
020	TF	ENTID	-	120°(120.0°)	+0.33	10.8	L	+6000	-	-	RNP APCH
030	TF	ATNES (IF)	-	085°(084.5°)	+0.33	9.2	-	+3300	-	-	RNP APCH
010	IF	ATNES (IF)	-	-	+0.33	-	-	+3300	-	-	RNP APCH
020	TF	SM351 (FAF)	-	355°(354.5°)	+0.33	6.1	-	@2100	-	-	RNP APCH
030	TF	SM350 (MAPt)	Y	355°(354.5°)	+0.33	5.9	-	@106	-	-3.2 / 50	RNP APCH
040	TF	SM901	Y	355°(354.5°)	+0.33	3.0	-	+1200	-	-	RNP APCH
050	DF	ATNES (IF)	-	-	+0.33	-	R	+3300	-210	-	RNP APCH
060	HM	ATNES (IF)	Y	355°(354.5°)	+0.33	1 minute	R	+3300	-230	-	RNP APCH

CHANGE : CHART TITLE.

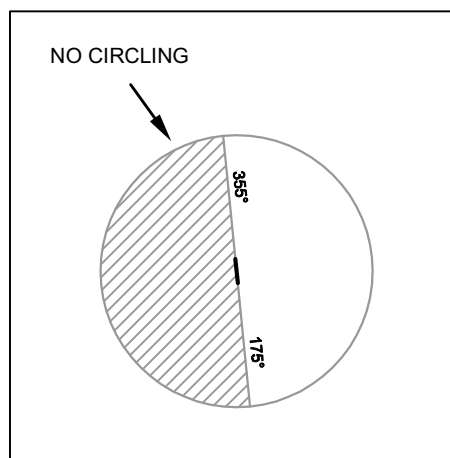
**INSTRUMENT  
APPROACH  
CHART - ICAO**

**AERODROME ELEV 64 FT  
HEIGHTS RELATED TO  
THR RWY35 - ELEV 56 FT**

**SURAT THANI / Samui (VTSM)  
RNP RWY35  
CAT C**

**WAYPOINT LIST**

RNP RWY35		
Waypoint Identifier	Coordinates	
ATNES	09° 20' 27.55" N	100° 04' 57.39" E
DORNA	09° 24' 58.70" N	099° 46' 14.10" E
ENRAG	10° 02' 23.31" N	100° 09' 31.07" E
ENTID	09° 19' 33.96" N	099° 55' 40.38" E
KILEP	09° 21' 08.06" N	100° 12' 00.28" E
MESEM	09° 07' 19.05" N	099° 48' 15.85" E
RUMVA	09° 17' 16.93" N	100° 15' 59.72" E
SM350	09° 32' 27.55" N	100° 03' 47.31" E
SM351	09° 26' 33.55" N	100° 04' 21.78" E
SM352	09° 12' 29.52" N	099° 54' 49.95" E
SM353	09° 31' 09.79" N	100° 11' 24.06" E
SM354	09° 48' 20.10" N	100° 10' 21.97" E
SM355	09° 31' 25.18" N	100° 22' 53.12" E
SM901	09° 35' 27.55" N	100° 03' 29.78" E
UPNEP	09° 42' 13.10" N	100° 29' 36.40" E



CHANGE : CHART TITLE.

**INTENTIONALLY BLANK**