

## VTSK AD 2.1 AERODROME LOCATION INDICATOR AND NAME

## VTSK - PATTANI / PATTANI AIRPORT

## VTSK AD 2.2 AERODROME GEOGRAPHICAL AND ADMINISTRATIVE DATA

|   |  |   |
|---|--|---|
| 1 | ARP coordinates and site at AD                             | 064708.55N 1010913.09E  |
| 2 | Direction and distance from (city)                         | 16 KM S, from city  |
| 3 | Elevation/Reference temperature                            | 8 FT/35°C   |
| 4 | Geoid Undulation at AD ELEV PSN                            | NIL   |
| 5 | MAG VAR/Annual change                                      | 0.14°W (2016)/0°0'E   |
| 6 | AD Administration, address, telephone, telefax, telex, AFS | Air Task Force 9, Royal Thai Air Force<br>Pattani Airport<br>Amphoe Nongjig<br>Pattani Province 94170<br>Thailand<br>Tel: +667 343 1190<br>+667 343 7023<br>Fax: +667 343 1195<br>AFS: VTSKYDYX |
| 7 | Types of traffic permitted (IFR/VFR)                       | IFR/VFR   |
| 8 | Remarks  | Operator: Department of Airports  |

## VTSK AD 2.3 OPERATIONAL HOURS

|    |                            |   |
|----|----------------------------|---|
| 1  | Aerodrome Operator         | HJ  |
| 2  | Customs and immigration    | On request  |
| 3  | Health and sanitation      | On request  |
| 4  | AIS Briefing Office        | HJ  |
| 5  | ATS Reporting Office (ARO) | NIL   |
| 6  | MET Briefing Office        | NIL   |
| 7  | ATS                        | 2300-1100, outside this period 1 HR PN to Pattani Tower |
| 8  | Fuelling                   | NIL   |
| 9  | Handling                   | NIL   |
| 10 | Security                   | NIL   |
| 11 | De-icing                   | NIL   |
| 12 | Remarks                    | NIL   |

## VTSK AD 2.4 HANDLING SERVICES AND FACILITIES

|   |   |     |
|---|---|-----|
| 1 | Cargo-handling facilities               | NIL |
| 2 | Fuel/oil types                          | NIL |
| 3 | Fuelling facilities/capacity            | NIL |
| 4 | De-icing facilities                     | NIL |
| 5 | Hangar space for visiting aircraft      | NIL |
| 6 | Repair facilities for visiting aircraft | NIL |
| 7 | Remarks                                 | NIL |

**VTSK AD 2.5 PASSENGER FACILITIES**

|   |                      |             |
|---|----------------------|-------------|
| 1 | Hotels               | In the city |
| 2 | Restaurants          | In the city |
| 3 | Transportation       | Taxi        |
| 4 | Medical facilities   | NIL         |
| 5 | Bank and Post Office | NIL         |
| 6 | Tourist Office       | NIL         |
| 7 | Remarks              | NIL         |

**VTSK AD 2.6 RESCUE AND FIRE FIGHTING SERVICES**

|   |   |     |
|---|---|-----|
| 1 | AD category for fire fighting               | NIL |
| 2 | Rescue equipment                            | Yes |
| 3 | Capability for removal of disabled aircraft | NIL |
| 4 | Remarks                                     | NIL |

**VTSK AD 2.7 SEASONAL AVAILABILITY - CLEARING**

|   |                             |  |
|---|-----------------------------|--|
| 1 | Types of clearing equipment | NIL                                    |
| 2 | Clearance priorities        | NIL                                    |
| 3 | Remarks                     | The aerodrome is available all seasons |

**VTSK AD 2.8 APRONS, TAXIWAYS AND CHECK LOCATIONS/POSITIONS DATA**

|   |   |  |
|---|---|--|
| 1 | Apron surface and strength                  | Surface: Concrete and asphalt<br>Strength: PCN 27/F/A/Y/T                |
| 2 | Taxiway width, surface and strength         | Width: 20 M<br>Surface: Concrete and asphalt<br>Strength: PCN 27/F/A/Y/T |
| 3 | Altimeter checkpoint location and elevation | NIL  |
| 4 | VOR checkpoints                             | NIL  |
| 5 | INS checkpoints                             | NIL  |
| 6 | Remarks                                     | NIL  |

**VTSK AD 2.9 SURFACE MOVEMENT GUIDANCE AND CONTROL SYSTEM AND MARKINGS**

|   |   |                                   |
|---|---|-----------------------------------|
| 1 | Use of aircraft stand ID signs, TWY guide lines and visual docking/parking guidance system of aircraft stands | NIL                               |
| 2 | RWY and TWY markings and LGT  | RWY and TWY: Markings and lighted |
| 3 | Stop bars   | NIL                               |
| 4 | Remarks   | NIL                               |

VTSK AD 2.10 AERODROME OBSTACLES

| In approach/TKOF areas       |   |                  | In circling areas and at AD                |             | Remarks |
|------------------------------|---|------------------|--|-------------|---------|
| 1                            |   |                  | 2  |             | 3       |
| RWY/Area affected            | Obstacle type<br>Elevation<br>Markings/LGT                  | Coordinates      | Obstacle type<br>Elevation<br>Markings/LGT | Coordinates |         |
| a                            | b   | c                | a  | b           |         |
| -                            | Radio mast<br>HGT 30 M<br>painted red/white<br>LGTD on top  | 073500N 0993700E | NIL  | NIL         | NIL     |
| Final RWY 08<br>(Right side) | Cell phone antenna<br>HGT 148 FT AGL<br>Dist 1,300 M to THR | 064700N 1010810E |  |             |         |

VTSK AD 2.11 METEOROLOGICAL INFORMATION PROVIDED

|    |  |  |
|----|--|--|
| 1  | Associated MET Office  | NIL  |
| 2  | Hours of service<br>MET Office outside hours                           | NIL  |
| 3  | Office responsible for TAF preparation<br>Periods of validity          | supply TAF from Southern (East coast) Regional Met. Center |
| 4  | Type of landing forecast<br>Interval of issuance                       | supply TAF from Southern (East coast) Regional Met. Center |
| 5  | Briefing/consultation provided   | No   |
| 6  | Flight documentation<br>Language(s) used                               | NIL  |
| 7  | Charts and other information available for<br>briefing or consultation | Daily Weather Forecast                                     |
| 8  | Supplementary equipment available for<br>providing information         | NIL  |
| 9  | ATS units provided with information                                    | NIL  |
| 10 | Additional information (limitation of service, etc.)                   | IP system  |

VTSK AD 2.12 RUNWAY PHYSICAL CHARACTERISTICS

| Designations<br>RWY NR | TRUE BRG | Dimensions<br>of RWY(M) | Strength (PCN) and<br>surface of RWY and<br>SWY | THR coordinates<br>RWY end coordinates<br>THR geoid undulation | THR elevation and highest<br>elevation of TDZ of precision<br>APP RWY |
|------------------------|----------|-------------------------|---|--|---|
| 1                      | 2        | 3                       | 4   | 5  | 6   |
| 08                     | 085.05°  | 1400x40                 | PCN 27/F/A/Y/T<br>Concrete and asphalt          | 064706.12N 1010850.08E   | THR 7 FT<br>TDZ 7 FT  |
| 26                     | 265.05°  | 1400x40                 | PCN 27/F/A/Y/T<br>Concrete and asphalt          | 064709.17N 1010935.62E   | THR 8 FT<br>TDZ 8 FT  |

| Slope of RWY-SWY | SWY dimensions<br>(M) | CWY dimensions<br>(M) | Strip dimensions<br>(M) | OFZ | Remarks |
|------------------|-----------------------|-----------------------|-------------------------|-----|---------|
| 7                | 8                     | 9                     | 10                      | 11  | 12      |
| NIL              | 30x55                 | NIL                   | 1700x300                | NIL | NIL     |
| NIL              | 150x55                | NIL                   | 1700x300                | NIL | NIL     |

**VTSK AD 2.13 DECLARED DISTANCES**

| RWY Designator | TORA (M) | TODA (M) | ASDA (M) | LDA (M) | Remarks |
|----------------|----------|----------|----------|---------|---------|
| 1              | 2        | 3        | 4        | 5       | 6       |
| 08             | 1400     | 1400     | 1430     | 1400    | NIL     |
| 26             | 1400     | 1400     | 1550     | 1400    | NIL     |

**VTSK AD 2.14 APPROACH AND RUNWAY LIGHTING**

| RWY Designator | APCH LGT type<br>LEN INTST | THR LGT colour<br>WBAR | VASIS (MEHT)<br>PAPI | TDZ, LGT<br>LEN | RWY Centre Line LGT<br>Length, spacing, colour, INTST | RWY edge LGT<br>LEN, spacing, colour<br>INTST | RWY End LGT<br>colour<br>WBAR | SWY LGT<br>LEN (M)<br>colour | Remarks |
|----------------|----------------------------|------------------------|----------------------|-----------------|---|---|-------------------------------|------------------------------|---------|
| 1              | 2                          | 3                      | 4                    | 5               | 6   | 7   | 8                             | 9                            | 10      |
| 08             | NIL                        | NIL                    | NIL                  | NIL             | NIL   | NIL   | NIL                           | NIL                          | NIL     |
| 26             | NIL                        | NIL                    | NIL                  | NIL             | NIL   | NIL   | NIL                           | NIL                          | NIL     |

**VTSK AD 2.15 OTHER LIGHTING, SECONDARY POWER SUPPLY**

|   |  |   |
|---|--|---|
| 1 | ABN/IBN location, characteristics and hours of operation | ABN: At Tower Building, FLG WG EV 7 SEC       |
| 2 | LDI location and LGT<br>Anemometer location and LGT      | NIL   |
| 3 | TWY edge and centre line lighting                        | NIL   |
| 4 | Secondary power supply/switch-over time                  | Secondary power supply to ABN at the airport. |
| 5 | Remarks  | Flares 2 HR PN                                |

**VTSK AD 2.16 HELICOPTER LANDING AREA**

|   |   |     |
|---|---|-----|
| 1 | Coordinates TLOF or THR of FATO<br>Geoid undulation       | NIL |
| 2 | TLOF and/or FATO elevation M/FT                           | NIL |
| 3 | TLOF and FATO area dimensions, surface, strength, marking | NIL |
| 4 | True and MAG BRG of FATO                                  | NIL |
| 5 | Declared distance available                               | NIL |
| 6 | APP and FATO lighting                                     | NIL |
| 7 | Remarks   | NIL |

**VTSK AD 2.17 ATS AIRSPACE**

|   |                                   |   |
|---|-----------------------------------|---|
| 1 | Designation and lateral limits    | A circle of 5 NM radius centred on Pattani NDB (064718.45N 1010852.51E) |
| 2 | Vertical limits                   | 2000 FT/AGL   |
| 3 | Airspace classification           | C   |
| 4 | ATS unit call sign<br>Language(s) | Pattani Tower<br>English, Thai  |
| 5 | Transition altitude               | 11000 FT  |
| 6 | Remarks                           | NIL   |

**VTSK AD 2.18 ATS COMMUNICATION FACILITIES**

| Service designation | Call sign        | Frequency   | Hours of operation        | Remarks  |
|---------------------|------------------|---|---------------------------|--|
| 1                   | 2                | 3   | 4                         | 5  |
| APP                 | Pattani Approach | 126.0 MHZ   | 23:30-11:30 <sup>2)</sup> | <sup>1)</sup> Emergency frequency<br><sup>2)</sup> Outside this period and Holiday<br>1 HR PN to ATC |
| TWR                 | Pattani Tower    | 119.3 MHZ<br>236.6 MHZ<br>121.5 MHZ <sup>1)</sup> | H24                       |  |

**VTSK AD 2.19 RADIO NAVIGATION AND LANDING AIDS**

| Type of aid,<br>MAG VAR<br>CAT of ILS/MLS<br>(For VOR/ILS/MLS,<br>give declination) | ID | Frequency | Hours of<br>operation | Position of<br>transmitting<br>antenna<br>coordinates | Elevation of DME<br>transmitting<br>antenna | Remarks         |
|---|----|-----------|-----------------------|---|---|-----------------|
| 1   | 2  | 3         | 4                     | 5   | 6   | 7               |
| NDB   | PT | 201 KHZ   | H24                   | 064718.45N<br>1010852.51E                             | NIL   | Output 50 watts |

**VTSK AD 2.20 LOCAL AERODROME REGULATIONS**

NIL

**VTSK AD 2.21 NOISE ABATEMENT PROCEDURES**

NIL

**VTSK AD 2.22 FLIGHT PROCEDURES**

NIL

**VTSK AD 2.23 ADDITIONAL INFORMATION**

NIL

**VTSK AD 2.24 CHARTS RELATED TO AN AERODROME**

| Chart name   | Page          |
|--|---------------|
| Aerodrome Chart - ICAO   | AD 2-VTSK-2-1 |
| Instrument Approach Chart - ICAO - NDB RWY 08 CAT A, B                       | AD 2-VTSK-8-1 |
| Instrument Approach Chart - ICAO - NDB RWY 26 CAT A, B                       | AD 2-VTSK-8-3 |
| Instrument Approach Chart - ICAO - RNP RWY 08 CAT A, B                       | AD 2-VTSK-8-5 |
| Instrument Approach Chart - ICAO - RNP RWY 08 CAT A, B (Tabular description) | AD 2-VTSK-8-6 |
| Instrument Approach Chart - ICAO - RNP RWY 26 CAT A, B                       | AD 2-VTSK-8-7 |

---

**Chart name**

**Page**

---

Instrument Approach Chart - ICAO - RNP RWY 26 CAT A, B (Tabular description)

AD 2-VTSK-8-8

AERODROME CHART-ICAO

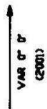
06° 47' 08" N  
101° 09' 13" E

ELEV 8 ft  
2 m

TWR 119.3  
236.8

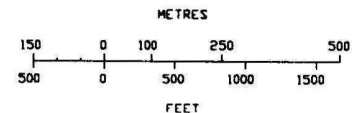
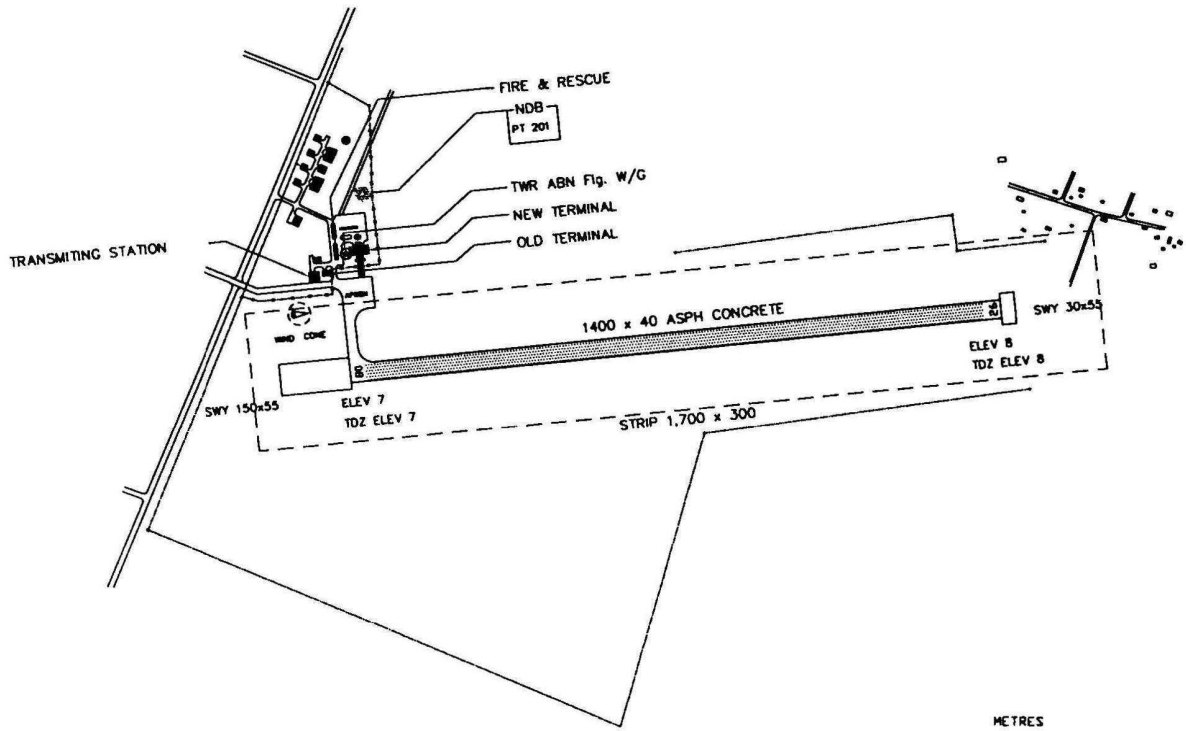
PATTANI/Pattani

| RWY   | DIRECTION | THR                             | BEARING STRENGTH |
|-------|-----------|---------------------------------|------------------|
| 08    | 85°       | 06° 47' 06" N<br>101° 08' 50" E | PCN 21/F/C/X/T   |
| 26    | 265°      | 06° 47' 09" N<br>101° 09' 36" E |                  |
| APRON |           |                                 | PCN 21/R/C/X/T   |



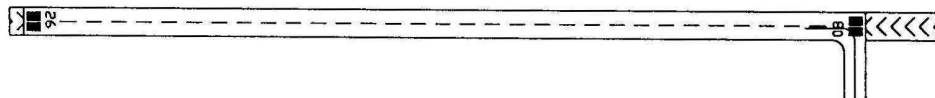
ANNUAL RATE OF CHANGE 3'E

ELEVATIONS IN FEET AND DIMENSIONS IN METRES  
BEARING ARE MAGNETIC

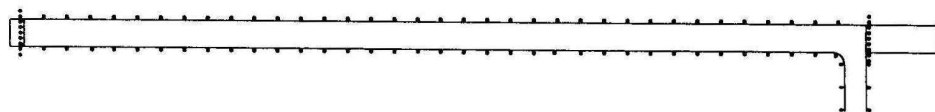


Remark : COORDINATE ARE WGS-84

MARKING AIDS RWY 08/26 AND EXIT TWY



LIGHTING AIDS RWY 08/26 AND EXIT TWY



**INTENTIONALLY BLANK**

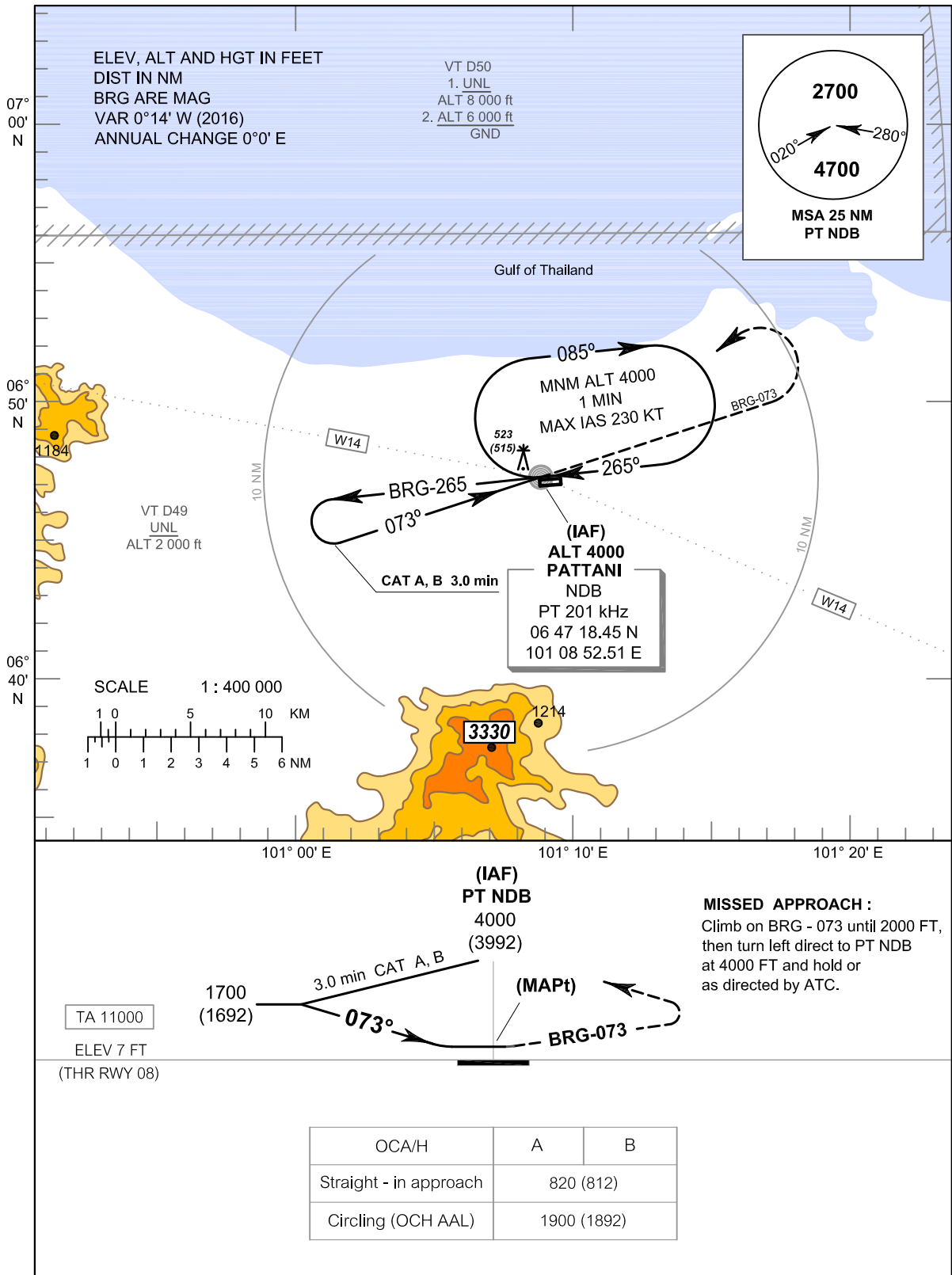


**INSTRUMENT  
APPROACH  
CHART - ICAO**

**AERODROME ELEV 8 FT  
HEIGHTS RELATED TO  
AERODROME ELEV**

APP : 126.0  
TWR : 119.3

**PATTANI / Pattani (VTSK)  
NDB RWY08  
CAT A, B**



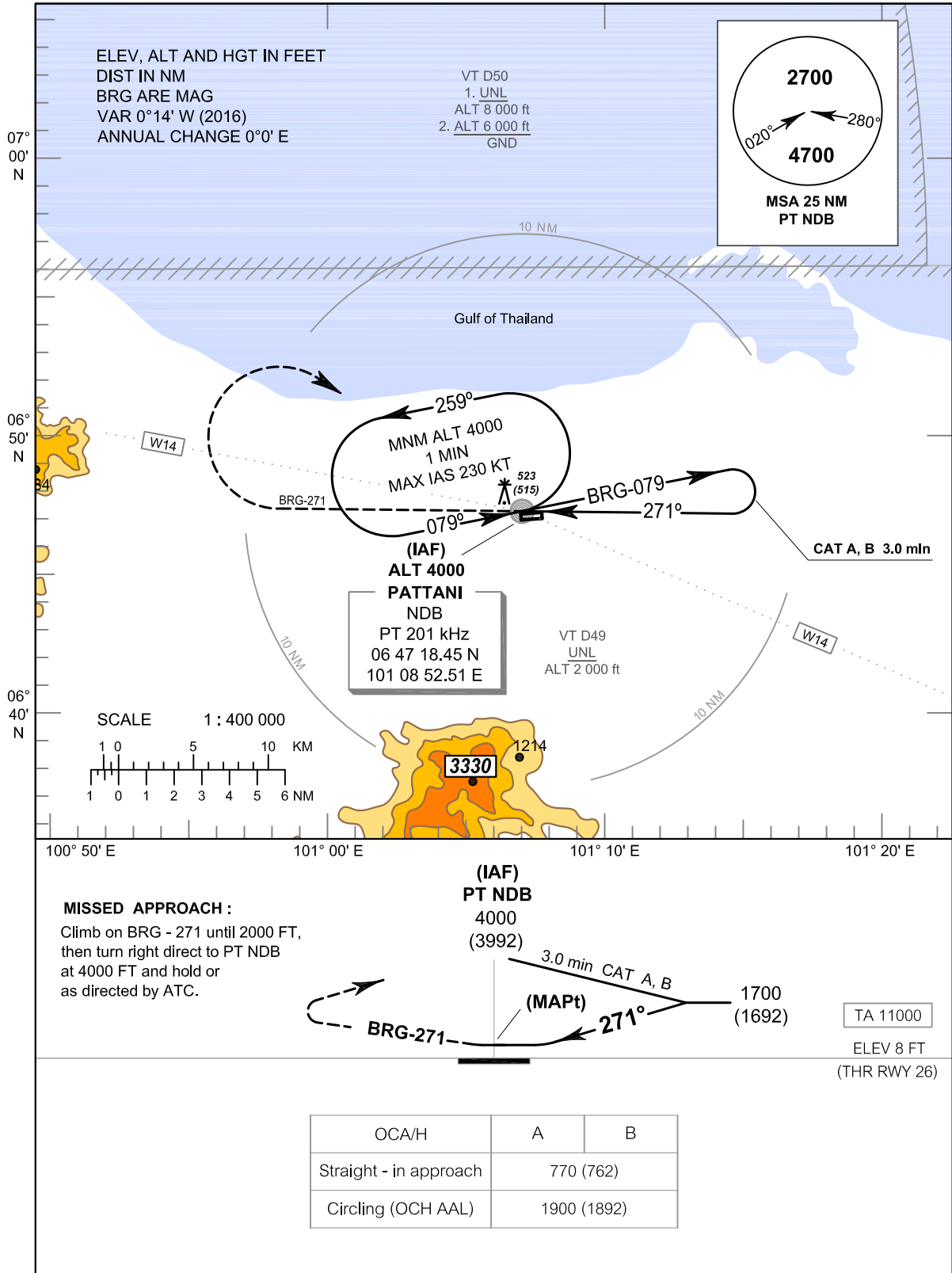
**INTENTIONALLY BLANK**

**INSTRUMENT  
APPROACH  
CHART - ICAO**

**AERODROME ELEV 8 FT  
HEIGHTS RELATED TO  
AERODROME ELEV**

APP : 126.0  
TWR : 119.3

**PATTANI / Pattani (VTSK)  
NDB RWY26  
CAT A, B**



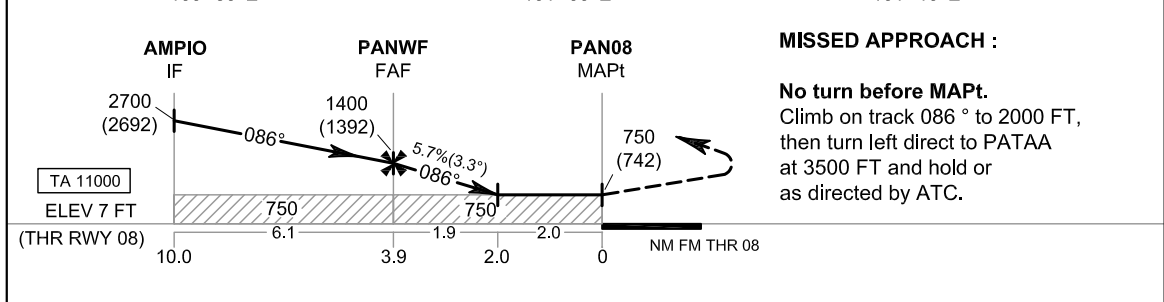
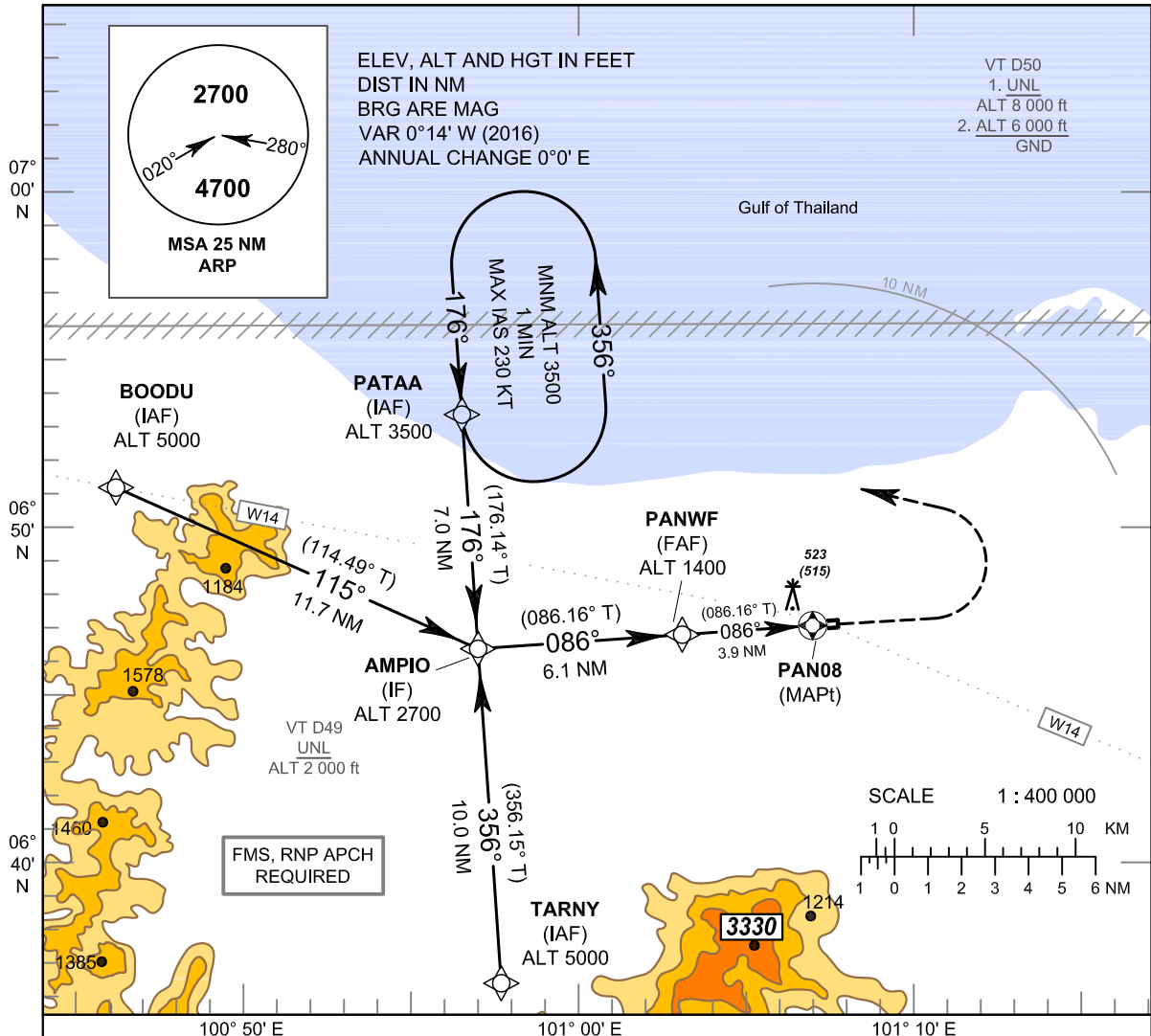
**INTENTIONALLY BLANK**

**INSTRUMENT  
APPROACH  
CHART - ICAO**

**AERODROME ELEV 8 FT  
HEIGHTS RELATED TO  
AERODROME ELEV**

APP : 126.0  
TWR : 119.3

**PATTANI / Pattani (VTSK)  
RNP RWY08  
CAT A, B**



CHANGE: CHART TITLE.

| OCA/H              | A           |           | B |  | NM to NEXT WPT | FAF      | 3 NM        |             | 2 NM      |     |     |     |
|--------------------|-------------|-----------|---|--|----------------|----------|-------------|-------------|-----------|-----|-----|-----|
|                    | LNAV        | 750 (742) |   |  |                |          | 1400 (1392) | 1095 (1087) | 750 (742) |     |     |     |
| Circling (OCH AAL) | 1900 (1892) |           |   |  |                | (ft/min) | 404         | 519         | 577       | 693 | 808 | 924 |

**INSTRUMENT**      **AERODROME ELEV 8 FT**  
**APPROACH**        **HEIGHTS RELATED TO**  
**CHART - ICAO**     **AERODROME ELEV**

**PATTANI / Pattani (VTSK)**  
**RNP RWY08**  
**CAT A, B**

**TABULAR DESCRIPTION**

| RNP RWY08 |            |                     |         |               |           |          |           |          |       |      |               |
|-----------|------------|---------------------|---------|---------------|-----------|----------|-----------|----------|-------|------|---------------|
| Serial    | Path       | Waypoint Identifier | Flyover | Course        | Magnetic  | Distance | Turn      | Altitude | Speed | VPA/ | Navigation    |
| Number    | Descriptor |                     |         | ° M (° T)     | Variation | (NM)     | Direction | (FT)     | (KT)  | TCH  | Specification |
| 010       | IF         | PATAA (IAF)         | -       | -             | + 0.2     | -        | -         | @3500    | -     | -    | RNP APCH      |
| 020       | TF         | AMPIO (IF)          | -       | 176°(176.14°) | + 0.2     | 7.0      | -         | @2700    | -     | -    | RNP APCH      |
| 010       | IF         | BOODU (IAF)         | -       | -             | + 0.2     | -        | -         | @5000    | -     | -    | RNP APCH      |
| 020       | TF         | AMPIO (IF)          | -       | 115°(114.49°) | + 0.2     | 11.7     | -         | @2700    | -     | -    | RNP APCH      |
| 010       | IF         | TARNY (IAF)         | -       | -             | + 0.2     | -        | -         | @5000    | -     | -    | RNP APCH      |
| 020       | TF         | AMPIO (IF)          | -       | 356°(356.15°) | + 0.2     | 10.0     | -         | @2700    | -     | -    | RNP APCH      |
| 010       | IF         | AMPIO (IF)          | -       | -             | + 0.2     | -        | -         | @2700    | -     | -    | RNP APCH      |
| 020       | TF         | PANWF (FAF)         | -       | 086°(086.16°) | + 0.2     | 6.1      | -         | @1400    | -     | -    | RNP APCH      |
| 030       | TF         | PAN08 (MAPt)        | Y       | 086°(086.16°) | + 0.2     | 3.9      | -         | @750     | -     | -    | RNP APCH      |
| 040       | CA         | -                   | -       | 086°(086.16°) | + 0.2     | -        | -         | + 2000   | -     | -    | RNP APCH      |
| 050       | DF         | PATAA (IAF)         | -       | -             | + 0.2     | -        | L         | + 3500   | -     | -    | RNP APCH      |
| 060       | HM         | PATAA (IAF)         | Y       | 176°(176.14°) | + 0.2     | 1 minute | L         | + 3500   | -230  | -    | RNP APCH      |

**WAYPOINT LIST**

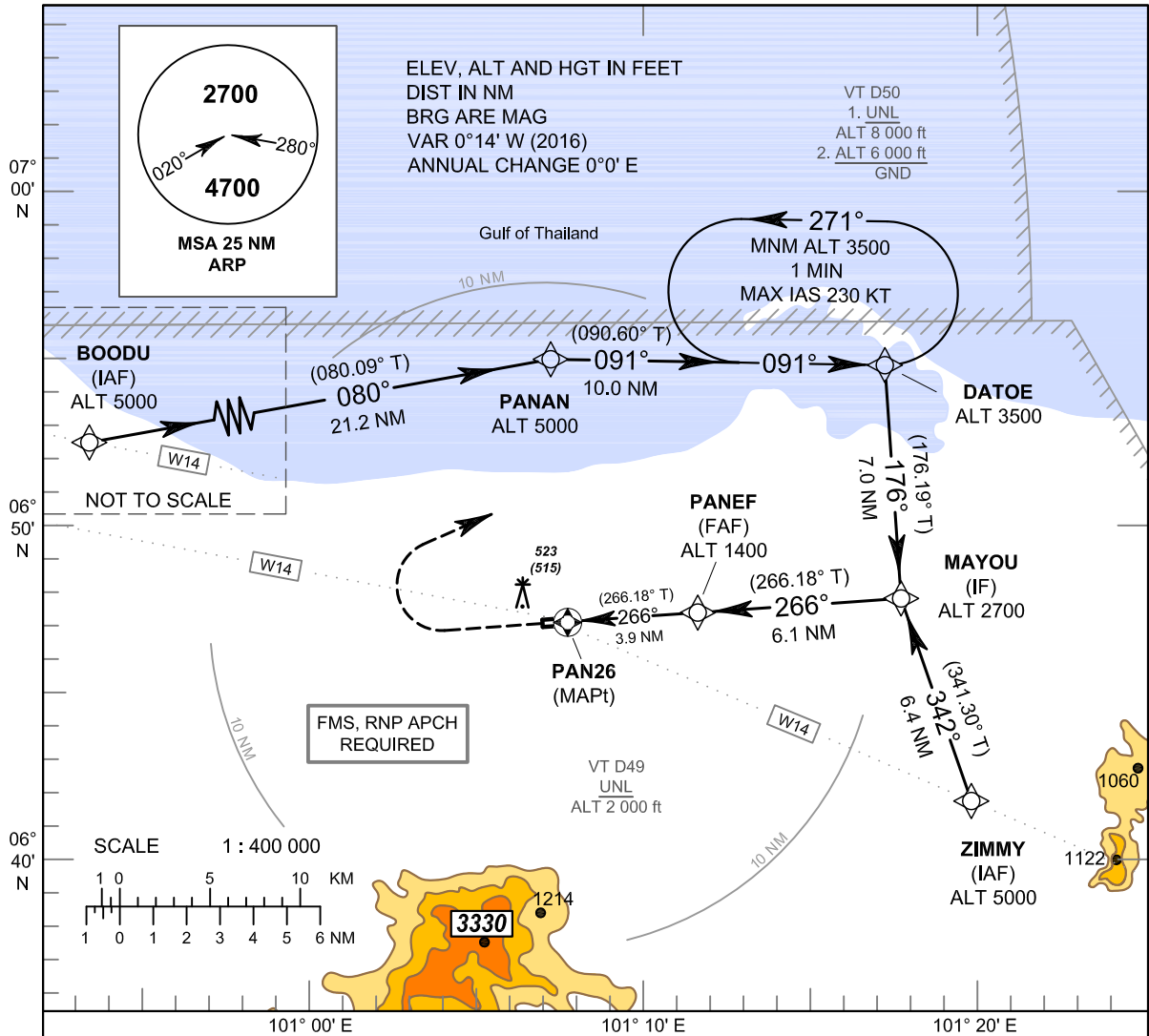
| RNP RWY08           |                  |                   |
|---------------------|------------------|-------------------|
| Waypoint Identifier | Coordinates      |                   |
| PATAA               | 06° 53' 26.76" N | 100° 58' 19.94" E |
| BOODU               | 06° 51' 17.61" N | 100° 48' 07.49" E |
| TARNY               | 06° 36' 24.20" N | 100° 59' 28.85" E |
| AMPIO               | 06° 46' 25.71" N | 100° 58' 48.33" E |
| PANWF               | 06° 46' 50.39" N | 101° 04' 55.39" E |
| PAN08 (THR 08)      | 06° 47' 06.12" N | 101° 08' 50.08" E |

**INSTRUMENT  
APPROACH  
CHART - ICAO**

**AERODROME ELEV 8 FT  
HEIGHTS RELATED TO  
AERODROME ELEV**

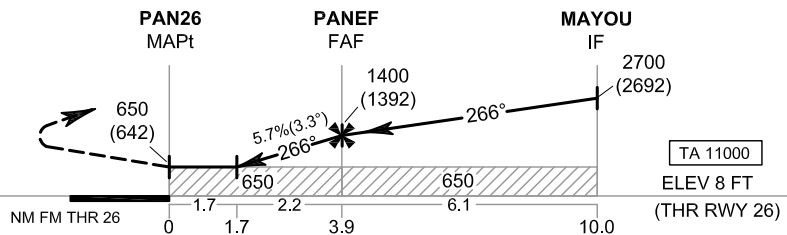
APP : 126.0  
TWR : 119.3

**PATTANI / Pattani (VTSK)  
RNP RWY26  
CAT A, B**



**MISSED APPROACH :**

**No turn before MAPt.**  
Climb on track 266° to 2000 FT,  
then turn right direct to DATOE  
at 3500 FT and hold or  
as directed by ATC.



CHANGE: CHART TITLE.

|                    |             |   |                                 |           |           |             |             |     |     |     |
|--------------------|-------------|---|---------------------------------|-----------|-----------|-------------|-------------|-----|-----|-----|
| OCA/H              | A           | B | NM to NEXT WPT                  | 1.7 NM    | 2 NM      | 3 NM        | FAF         |     |     |     |
| LNAV               | 650 (642)   |   | Altitude (Height)               | 650 (642) | 750 (742) | 1095 (1087) | 1400 (1392) |     |     |     |
|                    |             |   | Ground speed                    | knot      | 70        | 90          | 100         | 120 | 140 | 160 |
| Circling (OCH AAL) | 1900 (1892) |   | Rate of descent FAF-MAPt (5.7%) | (ft/min)  | 404       | 519         | 577         | 693 | 808 | 924 |

**INSTRUMENT APPROACH CHART - ICAO**  
**AERODROME ELEV 8 FT**  
HEIGHTS RELATED TO  
AERODROME ELEV

**PATTANI / Pattani (VTSK)**  
**RNP RWY26**  
CAT A, B

**TABULAR DESCRIPTION**

| RNP RWY26     |                 |                     |         |                  |                    |               |                |               |            |          |                          |
|---------------|-----------------|---------------------|---------|------------------|--------------------|---------------|----------------|---------------|------------|----------|--------------------------|
| Serial Number | Path Descriptor | Waypoint Identifier | Flyover | Course ° M (° T) | Magnetic Variation | Distance (NM) | Turn Direction | Altitude (FT) | Speed (KT) | VPA/ TCH | Navigation Specification |
| 010           | IF              | ZIMMY (IAF)         | -       | -                | + 0.2              | -             | -              | @5000         | -          | -        | RNP APCH                 |
| 020           | TF              | MAYOU (IF)          | -       | 342*(341.30°)    | + 0.2              | 6.4           | -              | @2700         | -          | -        | RNP APCH                 |
| 010           | IF              | BOODU (IAF)         | -       | -                | + 0.2              | -             | -              | @5000         | -          | -        | RNP APCH                 |
| 020           | TF              | PANAN               | -       | 080*(080.09°)    | + 0.2              | 21.2          | R              | @5000         | -          | -        | RNP APCH                 |
| 030           | TF              | DATOE               | -       | 091*(090.60°)    | + 0.2              | 10.0          | R              | @3500         | -          | -        | RNP APCH                 |
| 040           | TF              | MAYOU (IF)          | -       | 176*(176.19°)    | + 0.2              | 7.0           | -              | @2700         | -          | -        | RNP APCH                 |
| 010           | IF              | MAYOU (IF)          | -       | -                | + 0.2              | -             | -              | @2700         | -          | -        | RNP APCH                 |
| 020           | TF              | PANEF (FAF)         | -       | 266*(266.18°)    | + 0.2              | 6.1           | -              | @1400         | -          | -        | RNP APCH                 |
| 030           | TF              | PAN26 (MAPt)        | Y       | 266*(266.18°)    | + 0.2              | 3.9           | -              | @650          | -          | -        | RNP APCH                 |
| 040           | CA              | -                   | -       | 266*(266.18°)    | + 0.2              | -             | -              | + 2000        | -          | -        | RNP APCH                 |
| 050           | DF              | DATOE               | -       | -                | + 0.2              | -             | R              | + 3500        | -          | -        | RNP APCH                 |
| 060           | HM              | DATOE               | Y       | 091*(090.60°)    | + 0.2              | 1 minute      | L              | + 3500        | - 230      | -        | RNP APCH                 |

**WAYPOINT LIST**

| RNP RWY26           |                  |                   |
|---------------------|------------------|-------------------|
| Waypoint Identifier | Coordinates      |                   |
| ZIMMY               | 06° 41' 42.51" N | 101° 21' 41.65" E |
| BOODU               | 06° 51' 17.61" N | 100° 48' 07.49" E |
| PANAN               | 06° 54' 56.90" N | 101° 09' 06.07" E |
| DATOE               | 06° 54' 50.44" N | 101° 19' 09.32" E |
| MAYOU               | 06° 47' 49.36" N | 101° 19' 37.41" E |
| PANEF               | 06° 47' 24.87" N | 101° 13' 30.31" E |
| PAN26 (THR 26)      | 06° 47' 09.17" N | 101° 09' 35.62" E |