

VTSE AD 2.1 AERODROME LOCATION INDICATOR AND NAME

VTSE - CHUMPHON / CHUMPHON AIRPORT

VTSE AD 2.2 AERODROME GEOGRAPHICAL AND ADMINISTRATIVE DATA

1	ARP coordinates and site at AD	104240.33N 0992142.16E Centre RWY 1050 M from THR 06
2	Direction and distance from (city)	35 KM N
3	Elevation/Reference temperature	18 FT/35°C
4	Geoid Undulation at AD ELEV PSN	NIL
5	MAG VAR/Annual change	0.50°W (2016) / 0.01°E
6	AD Administration, address, telephone, telefax, telex, AFS	Director of Chumphon Airport Chumphon Airport Amphoe Pathiu Chumphon Thailand 86160 Tel: +667 759 1263-9 Fax: +667 759 1272 AFS: VTSEYDYX
7	Types of traffic permitted (IFR/VFR)	IFR/VFR
8	Remarks	Operator: Department of Airports

VTSE AD 2.3 OPERATIONAL HOURS

1	Aerodrome Operator	0000-1100
2	Customs and immigration	On request
3	Health and sanitation	On request
4	AIS Briefing Office	NIL
5	ATS Reporting Office (ARO)	0000-1100
6	MET Briefing Office	On request
7	ATS	0000-1100
8	Fuelling	NIL
9	Handling	NIL
10	Security	H24
11	De-icing	NIL
12	Remarks	ATS Reporting Office (ARO): Located at Surat Thani Air Traffic Control Centre (1st floor of tower building) Tel: +667 744 1008 +669 1010 1837 Fax: +667 744 1009

VTSE AD 2.4 HANDLING SERVICES AND FACILITIES

1	Cargo-handling facilities	NIL
2	Fuel/oil types	NIL
3	Fuelling facilities/capacity	NIL
4	De-icing facilities	NIL
5	Hangar space for visiting aircraft	NIL
6	Repair facilities for visiting aircraft	NIL
7	Remarks	NIL

VTSE AD 2.5 PASSENGER FACILITIES

1	Hotels	Near AD and in the city
2	Restaurants	In the city
3	Transportation	Available
4	Medical facilities	First aid at AD, hospital in town and in the city
5	Bank and Post Office	In town and in the city
6	Tourist Office	In the city
7	Remarks	NIL

VTSE AD 2.6 RESCUE AND FIRE FIGHTING SERVICES

1	AD category for fire fighting	Category 6
2	Rescue equipment	Yes
3	Capability for removal of disabled aircraft	NIL
4	Remarks	NIL

VTSE AD 2.7 SEASONAL AVAILABILITY - CLEARING

1	Types of clearing equipment	NIL
2	Clearance priorities	NIL
3	Remarks	The aerodrome is available all seasons.

VTSE AD 2.8 APRONS, TAXIWAYS AND CHECK LOCATIONS/ POSITIONS DATA

1	Apron surface and strength	Surface: Concrete Strength: PCN 45/R/C/X/T
2	Taxiway width, surface and strength	Width: 23 M Surface: Concrete and asphalt Strength: PCN 42/F/C/X/T
3	Altimeter checkpoint location and elevation	5.50 M (18 FT)
4	VOR checkpoints	1042.7N 09921.9E
5	INS checkpoints	NIL
6	Remarks	NIL

VTSE AD 2.9 SURFACE MOVEMENT GUIDANCE AND CONTROL SYSTEM AND MARKINGS

1	Use of aircraft stand ID signs, TWY guide lines and visual docking/parking guidance system of aircraft stands	Yes
2	RWY and TWY markings and LGT	RWY and TWY: Marked and lighted
3	Stop bars	Marked
4	Remarks	NIL

VTSE AD 2.10 AERODROME OBSTACLES

In approach/TKOF areas			In circling areas and at AD		Remarks
1			2		
RWY/Area affected	Obstacle type Elevation Markings/LGT	Coordinates	Obstacle type Elevation Markings/LGT	Coordinates	
a	b	c	a	b	
NIL	NIL	NIL	NIL	NIL	NIL

VTSE AD 2.11 METEOROLOGICAL INFORMATION PROVIDED

1	Associated MET Office	Aeronautical Meteorological Station-Chumphon, Southern East-Coast Meteorological Center, Thai Meteorological Department (TMD)
2	Hours of service MET Office outside hours	2300-1100 NIL
3	Office responsible for TAF preparation Periods of validity	Supply TAF from Southern East-Coast Meteorological Center 24 HR
4	Type of landing forecast Interval of issuance	TREND 1 HR
5	Briefing/consultation provided	Personal Consultation Tel: +667 759 1311 ext. 6408
6	Flight documentation Language(s) used	NIL
7	Charts and other information available for briefing or consultation	S, U85, Daily Weather Forecast, satellite and radar images
8	Supplementary equipment available for providing information	Automated Weather Observation System (AWOS) and Weather Radar
9	ATS units provided with information	Chumphon TWR
10	Additional information (limitation of service, etc.)	NIL

VTSE AD 2.12 RUNWAY PHYSICAL CHARACTERISTICS

Designations RWY NR	TRUE BRG	Dimensions of RWY(M)	Strength (PCN) and surface of RWY and SWY	THR coordinates RWY end coordinates THR geoid undulation	THR elevation and highest elevation of TDZ of precision APP RWY
1	2	3	4	5	6
06	060.55°	2100x45	PCN 42/F/C/X/T Concrete and asphalt	104223.23N 0992112.14E	THR 18 FT TDZ 18 FT
24	240.55°	2100x45	PCN 42/F/C/X/T Concrete and asphalt	104257.41N 0992212.14E	THR 18 FT TDZ 18 FT

Slope of RWY-SWY	SWY dimensions (M)	CWY dimensions (M)	Strip dimensions (M)	OFZ	Remarks
7	8	9	10	11	12
0%	60x60	NIL	2340x300	NIL	NIL
0%	60x60	NIL	2340x300	NIL	NIL

VTSE AD 2.13 DECLARED DISTANCES

RWY Designator	TORA (M)	TODA (M)	ASDA (M)	LDA (M)	Remarks
1	2	3	4	5	6
06	2100	2100	2160	2100	NIL
24	2100	2100	2160	2100	NIL

VTSE AD 2.14 APPROACH AND RUNWAY LIGHTING

RWY Designator	APCH LGT type LEN INTST	THR LGT colour WBAR	VASIS (MEHT) PAPI	TDZ, LGT LEN	RWY Centre Line LGT Length, spacing, colour, INTST	RWY edge LGT LEN, spacing, colour INTST	RWY End LGT colour WBAR	SWY LGT LEN (M) colour	Remarks
1	2	3	4	5	6	7	8	9	10
06	NIL	Green	PAPI Left 3°	NIL	NIL	2100 M 60 M White, LIH	Red	NIL	NIL
24	SALS 420 M	Green	PAPI Left 3°	NIL	NIL	2100 M 60 M White, LIH	Red	NIL	NIL

VTSE AD 2.15 OTHER LIGHTING, SECONDARY POWER SUPPLY

1	ABN/IBN location, characteristics and hours of operation	ABN: At tower building FLG W G EV 7 SEC
2	LDI location and LGT Anemometer location and LGT	NIL
3	TWY edge and centre line lighting	EDGE: All TWY
4	Secondary power supply/switch-over time	Secondary power supply at tower and air field lighting (AFL).
5	Remarks	NIL

VTSE AD 2.16 HELICOPTER LANDING AREA

1	Coordinates TLOF or THR of FATO Geoid undulation	In front of tower
2	TLOF and/or FATO elevation M/FT	6 M (18 FT)
3	TLOF and FATO area dimensions, surface, strength, marking	Dimensions: 20 x 22 M. Surface: Concrete Marked / No.1, 2
4	True and MAG BRG of FATO	240°
5	Declared distance available	Clear
6	APP and FATO lighting	NIL
7	Remarks	Landing area on both side of apron

VTSE AD 2.17 ATS AIRSPACE

1	Designation and lateral limits	A circle of 5 NM radius centred on CPN DVOR/DME (104240.21N0992156.03E)
2	Vertical limits	2000 FT/AGL
3	Airspace classification	D
4	ATS unit call sign Language(s)	Chumphon Tower English, Thai
5	Transition altitude	11000 FT
6	Remarks	NIL

VTSE AD 2.18 ATS COMMUNICATION FACILITIES

Service designation	Call sign	Frequency	Hours of operation	Remarks
1	2	3	4	5
APP	Chumphon Approach	122.6 MHZ 121.5 MHZ ¹⁾	As AD OPR HR	¹⁾ Emergency frequency
TWR	Chumphon Tower	122.15 MHZ 236.6 MHZ 121.5 MHZ ¹⁾	As AD OPR HR	
ATIS	Chumphon Airport	128.45 MHZ	As AD OPR HR	

VTSE AD 2.19 RADIO NAVIGATION AND LANDING AIDS

Type of aid, MAG VAR CAT of ILS/MLS (For VOR/ILS/MLS, give declination)	ID	Frequency	Hours of operation	Position of transmitting antenna coordinates	Elevation of DME transmitting antenna	Remarks
1	2	3	4	5	6	7
NDB	CP	279 KHZ	H24	104303.93N 0992157.99E		50 NM coverage was check and found as follow: <ul style="list-style-type: none"> - Bearing 016-200 degrees ALT should not below 1,500 FT - Bearing 201-225 degrees ALT should not below 5,000 FT - Bearing 226-015 degrees unable to perform flight inspection due to border limited
DVOR/DME	CPN	110 MHZ CH37X	H24	104240.21N 0992156.03E	5.50 M (18 FT)	DVOR/DME restriction, due to mountainous terrain surround DVOR/DME station, coverage check does not provide adequate signal clockwise orbit at the required altitude and distance in various areas as follows: <ol style="list-style-type: none"> 1. 40 NM <ul style="list-style-type: none"> - Radial 011°-020° altitude should not below 5 000 FT - Radial 021°-050° altitude should not below 4 000 FT - Radial 051°-100° altitude should not below 2 000 FT - Radial 101°-110° altitude should not below 4 000 FT - Radial 111°-190° altitude should not below 2 000 FT - Radial 191°-225° altitude should not below 4 000 FT - Radial 226°-230° altitude should not below 6 000 FT 2. 30 NM (Due to border limited) <ul style="list-style-type: none"> - Radial 231°-270° altitude should not below 5 000 FT 3. 20 NM (Due to border limited) <ul style="list-style-type: none"> - Radial 271°-010° altitude should not below 5 000 FT
LOC RWY 24 ILS CAT I	ICPN	109.9 MHZ	H24	104218.37N 0992103.61E		LOC: Designated operation coverage 18 NM, ALT 6300 FT AMSL
GP		333.8 MHZ	H24	104249.31N 0992205.84E		GP: 3 DEG, RDH 50 FT
DME	ICPN	CH36X (109.9 MHZ)	H24	104220.40N 0992102.42E	15 FT	DME: Paired with LOC FREQ.

VTSE AD 2.20 LOCAL AERODROME REGULATIONS

NIL

VTSE AD 2.21 NOISE ABATEMENT PROCEDURES

NIL

VTSE AD 2.22 FLIGHT PROCEDURES

1. VFR PROCEDURES

Details of VFR entry and exit procedures, see charts.

VTSE AD 2.23 ADDITIONAL INFORMATION

1. BIRD CONCENTRATIONS

- Bird concentrations in the vicinity of an aerodrome.

VTSE AD 2.24 CHARTS RELATED TO AN AERODROME

Chart name	Page
Aerodrome Chart - ICAO	AD 2-VTSE-2-1
Instrument Approach Chart - ICAO - NDB RWY 06	AD 2-VTSE-8-1
Instrument Approach Chart - ICAO - NDB RWY 24	AD 2-VTSE-8-3
Instrument Approach Chart - ICAO - VOR RWY 06	AD 2-VTSE-8-5
Instrument Approach Chart - ICAO - VOR RWY 06 (Fix and point list table)	AD 2-VTSE-8-6
Instrument Approach Chart - ICAO - VOR RWY 24	AD 2-VTSE-8-7
Instrument Approach Chart - ICAO - VOR RWY 24 (Fix and point list table)	AD 2-VTSE-8-8
Instrument Approach Chart - ICAO - ILS or LOC y RWY 24	AD 2-VTSE-8-9
Instrument Approach Chart - ICAO - ILS or LOC y RWY 24 (Fix and point list table)	AD 2-VTSE-8-10
Instrument Approach Chart - ICAO - ILS or LOC z RWY 24	AD 2-VTSE-8-11
Instrument Approach Chart - ICAO - ILS or LOC z RWY 24 (Tabular description)	AD 2-VTSE-8-12
Instrument Approach Chart - ICAO - ILS or LOC z RWY 24 (Fix and point list table)	AD 2-VTSE-8-13
Instrument Approach Chart - ICAO - RNP RWY 06	AD 2-VTSE-8-15
Instrument Approach Chart - ICAO - RNP RWY 06 (Tabular description)	AD 2-VTSE-8-16
Instrument Approach Chart - ICAO - RNP RWY 24	AD 2-VTSE-8-17
Instrument Approach Chart - ICAO - RNP RWY 24 (Tabular description)	AD 2-VTSE-8-18
VFR ENTRY PROCEDURE CHART - RWY 06/24	AD 2-VTSE-9-1
VFR ENTRY PROCEDURE CHART - RWY 06/24 (Tabular description)	AD 2-VTSE-9-2
VFR EXIT PROCEDURE CHART - RWY 06	AD 2-VTSE-9-3
VFR EXIT PROCEDURE CHART - RWY 06 (Tabular description)	AD 2-VTSE-9-4
VFR EXIT PROCEDURE CHART - RWY 24	AD 2-VTSE-9-5
VFR EXIT PROCEDURE CHART - RWY 24 (Tabular description)	AD 2-VTSE-9-6

INTENTIONALLY BLANK

AERODROME CHART-ICAO

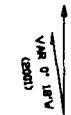
10° 42' 40" N
99° 21' 42" E

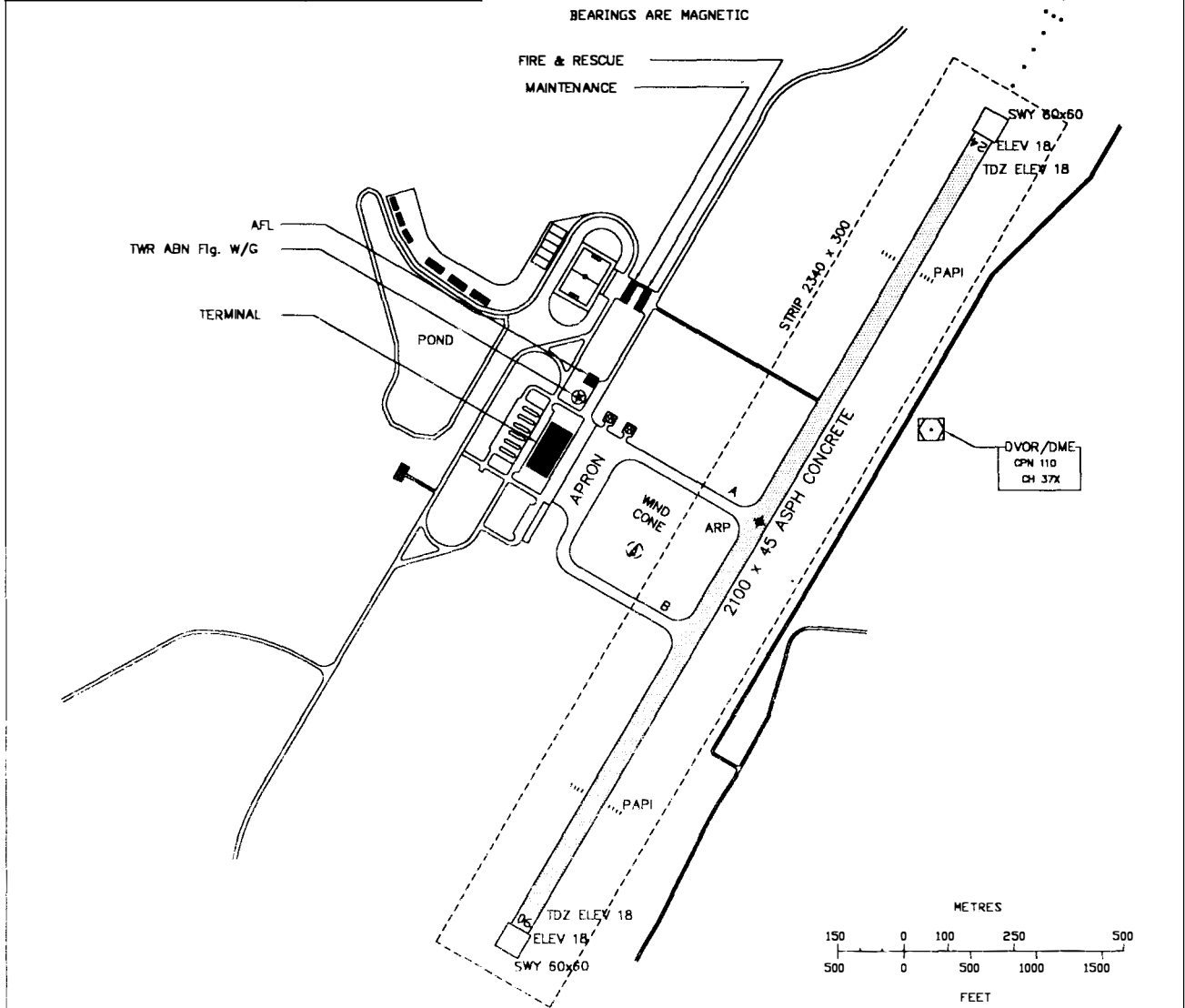
ELEV 18 ft
5.5 m

TWR 122.15

CHUMPHON / Chumphon

RWY	DIRECTION	THR	BEARING STRENGTH
06	61°	10° 42' 23" N 99° 21' 12" E	PCN 42/F/C/X/T
24	241°	10° 42' 57" N 99° 22' 12" E	
APRON			PCN 45/R/C/X/T


 ANNUAL RATE OF CHANGE 3"E
 SIMPLE APPROACH LIGHTING SYSTEM
 ELEVATIONS IN FEET AND DIMENSIONS IN METRES
 BEARINGS ARE MAGNETIC

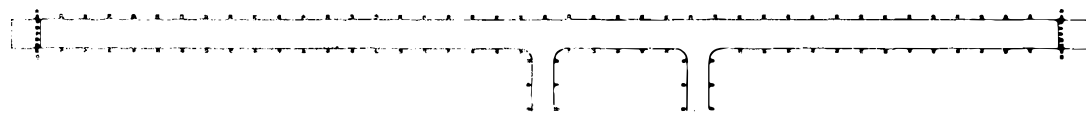


Remark : COORDINATE ARE WGS-84

MARKING AIDS RWY 06/24 AND EXIT TWY



LIGHTING AIDS RWY 06/24 AND EXIT TWY



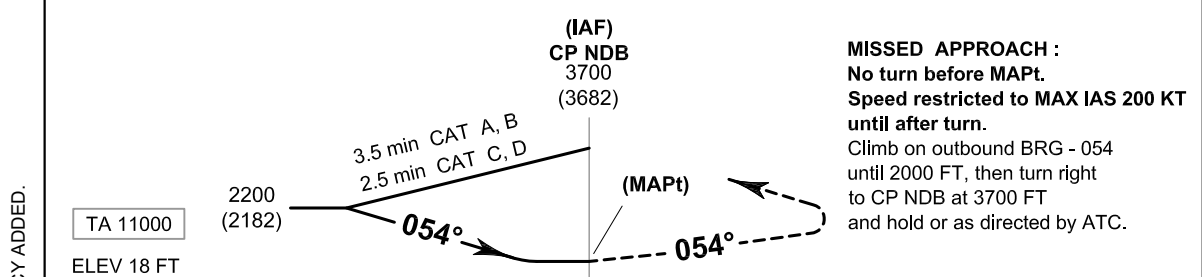
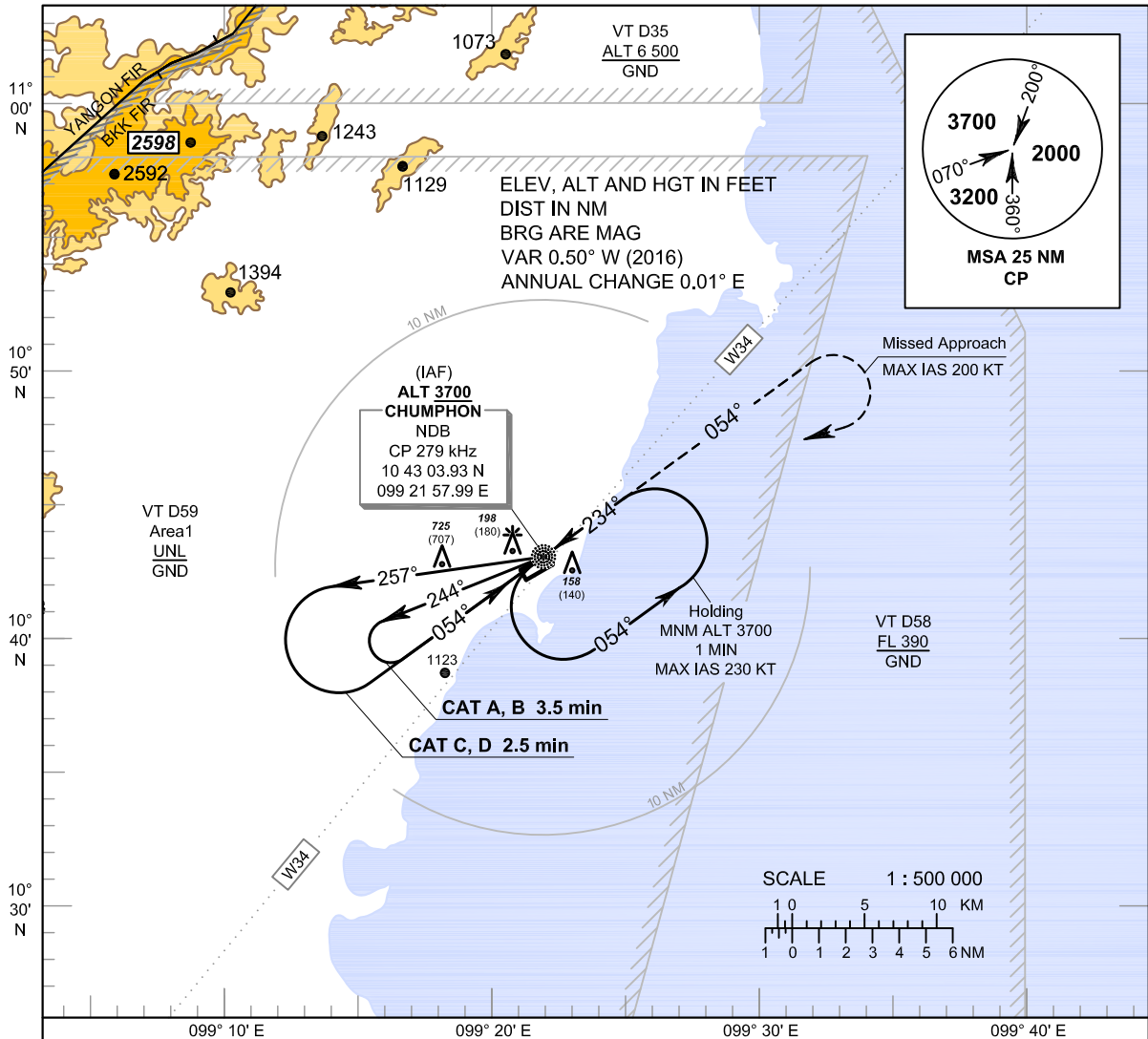
INTENTIONALLY BLANK

**INSTRUMENT
APPROACH
CHART - ICAO**

**AERODROME ELEV 18 FT
HEIGHTS RELATED TO
AERODROME ELEV**

APP : 122.6
TWR : 122.15 , 236.6
ATIS : 128.45

**CHUMPHON / Chumphon (VTSE)
NDB RWY06**



CHANGE : ATIS FREQUENCY ADDED.

TA 11000
ELEV 18 FT
(THR RWY06)

OCA/H	A	B	C	D
Straight - in Approach	1470 (1452)			
Circling (OCH AAL)	1500 (1482)			

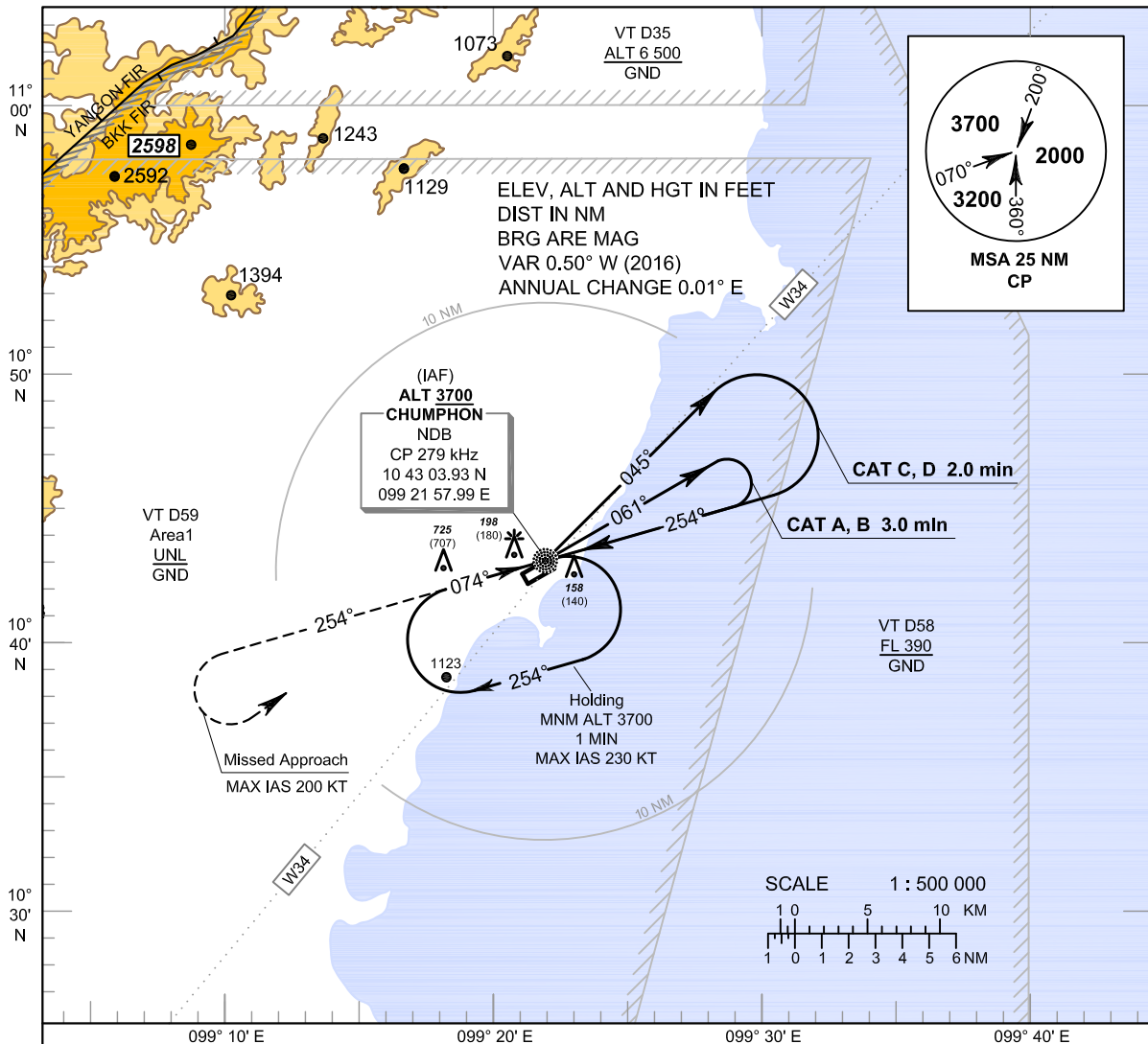
INTENTIONALLY BLANK

**INSTRUMENT
APPROACH
CHART - ICAO**

**AERODROME ELEV 18 FT
HEIGHTS RELATED TO
AERODROME ELEV**

APP : 122.6
TWR : 122.15 , 236.6
ATIS : 128.45

CHUMPHON / Chumphon (VTSE)
NDB RWY24



MISSED APPROACH :
No turn before MAPt.
Speed restricted to MAX IAS 200 KT until after turn.
Climb on outbound BRG - 254 until 2000 FT, then turn left to CP NDB at 3700 FT and hold or as directed by ATC.

(IAF) CP NDB 3700 (3682)
3.0 min CAT A, B
2.0 min CAT C, D

(MAPt) 2000 (1982)

TA 11000
ELEV 18 FT (THR RWY24)

OCA/H	A	B	C	D
Straight - in Approach	580 (562)			
Circling (OCH AAL)	1500 (1482)			

CHANGE : ATIS FREQUENCY ADDED.

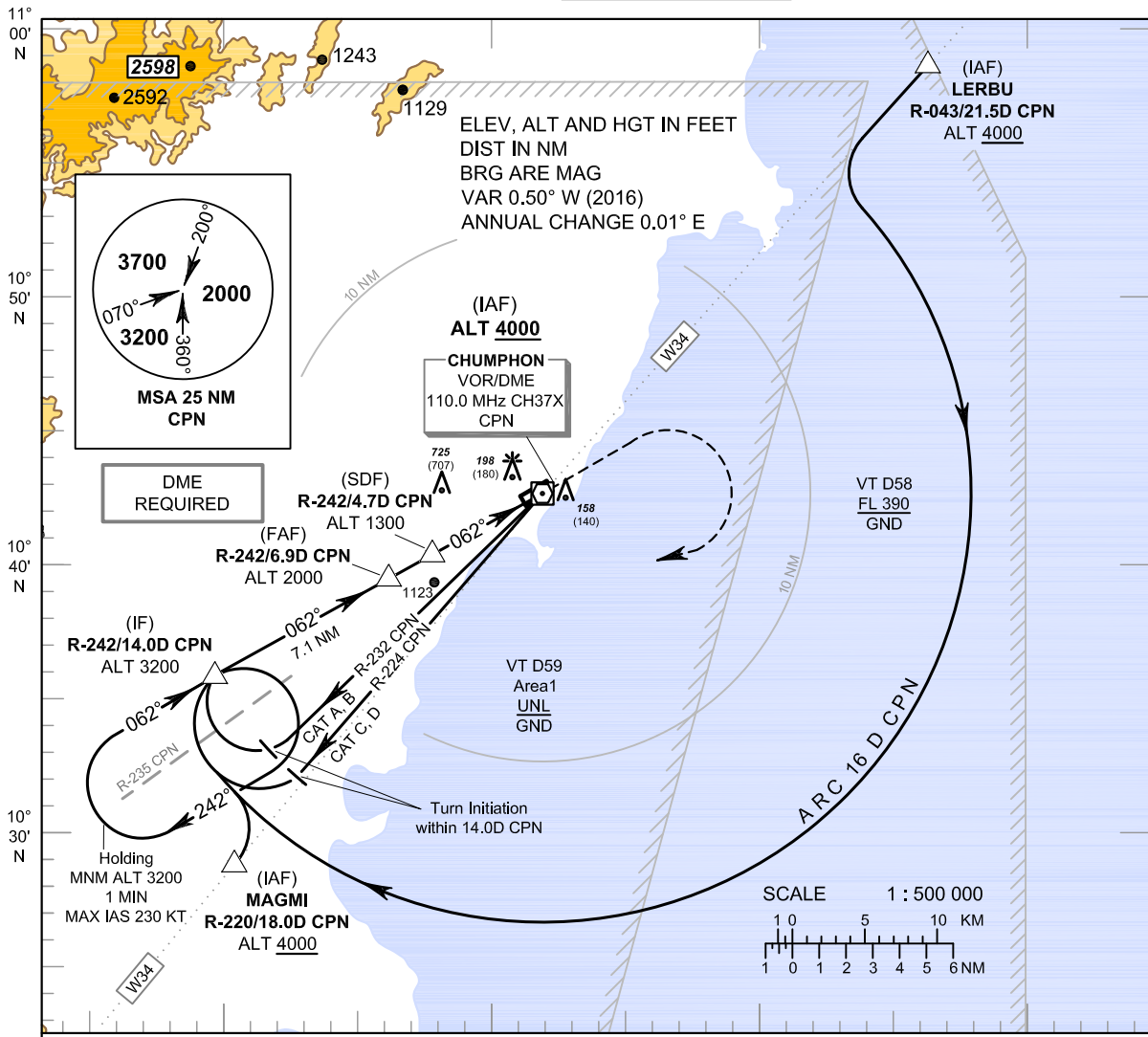
INTENTIONALLY BLANK

**INSTRUMENT
APPROACH
CHART - ICAO**

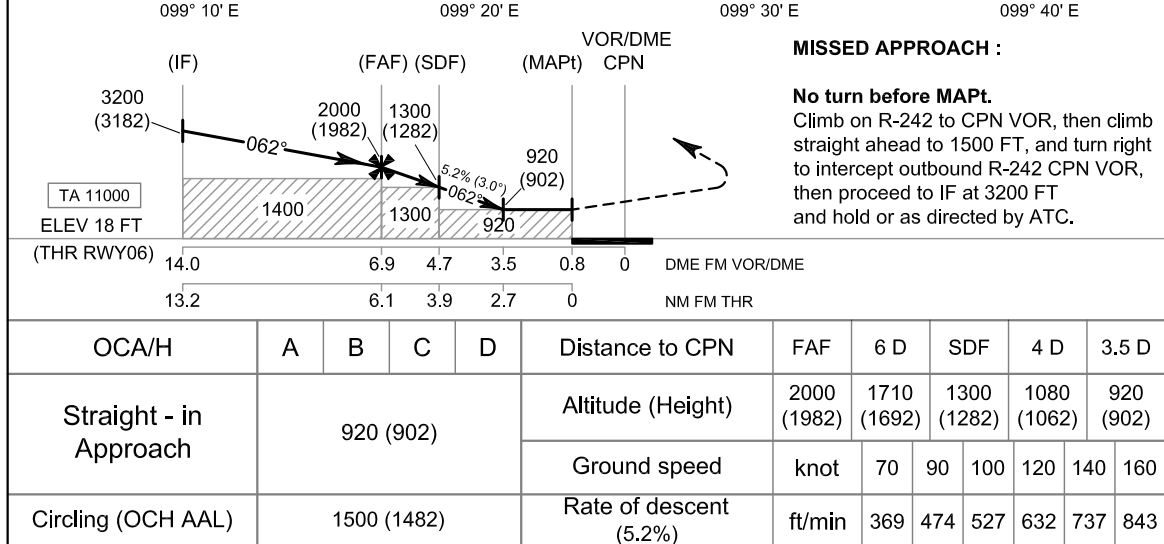
AERODROME ELEV 18 FT
HEIGHTS RELATED TO
AERODROME ELEV

APP : 122.6
TWR : 122.15 , 236.6
ATIS : 128.45

CHUMPHON / Chumphon (VTSE)
VOR RWY06



CHANGE : ATIS FREQUENCY ADDED.



INSTRUMENT
APPROACH
CHART - ICAO

AERODROME ELEV 18 FT
HEIGHTS RELATED TO
AERODROME ELEV

CHUMPHON / Chumphon (VTSE)
VOR RWY06

FIX/POINT		COORDINATES	
(IAF) LERBU	R-043 / 21.5D CPN	10° 58' 37.01" N	099° 36' 35.66" E
(IAF) MAGMI	R-220 / 18.0D CPN	10° 28' 46.08" N	099° 10' 14.75" E
(IF)	R-242 / 14.0D CPN	10° 35' 55.39" N	099° 09' 27.50" E
(FAF)	R-242 / 6.9D CPN	10° 39' 20.76" N	099° 15' 47.04" E
(SDF)	R-242 / 4.7D CPN	10° 40' 24.36" N	099° 17' 44.68" E
(MAPt)	R-242 / 0.8D CPN	10° 42' 18.08" N	099° 21' 15.06" E
VOR	CPN	10° 42' 40.21" N	099° 21' 56.03" E

**INSTRUMENT
APPROACH
CHART - ICAO**

**AERODROME ELEV 18 FT
HEIGHTS RELATED TO
AERODROME ELEV**

CHUMPHON / Chumphon (VTSE)

VOR RWY24

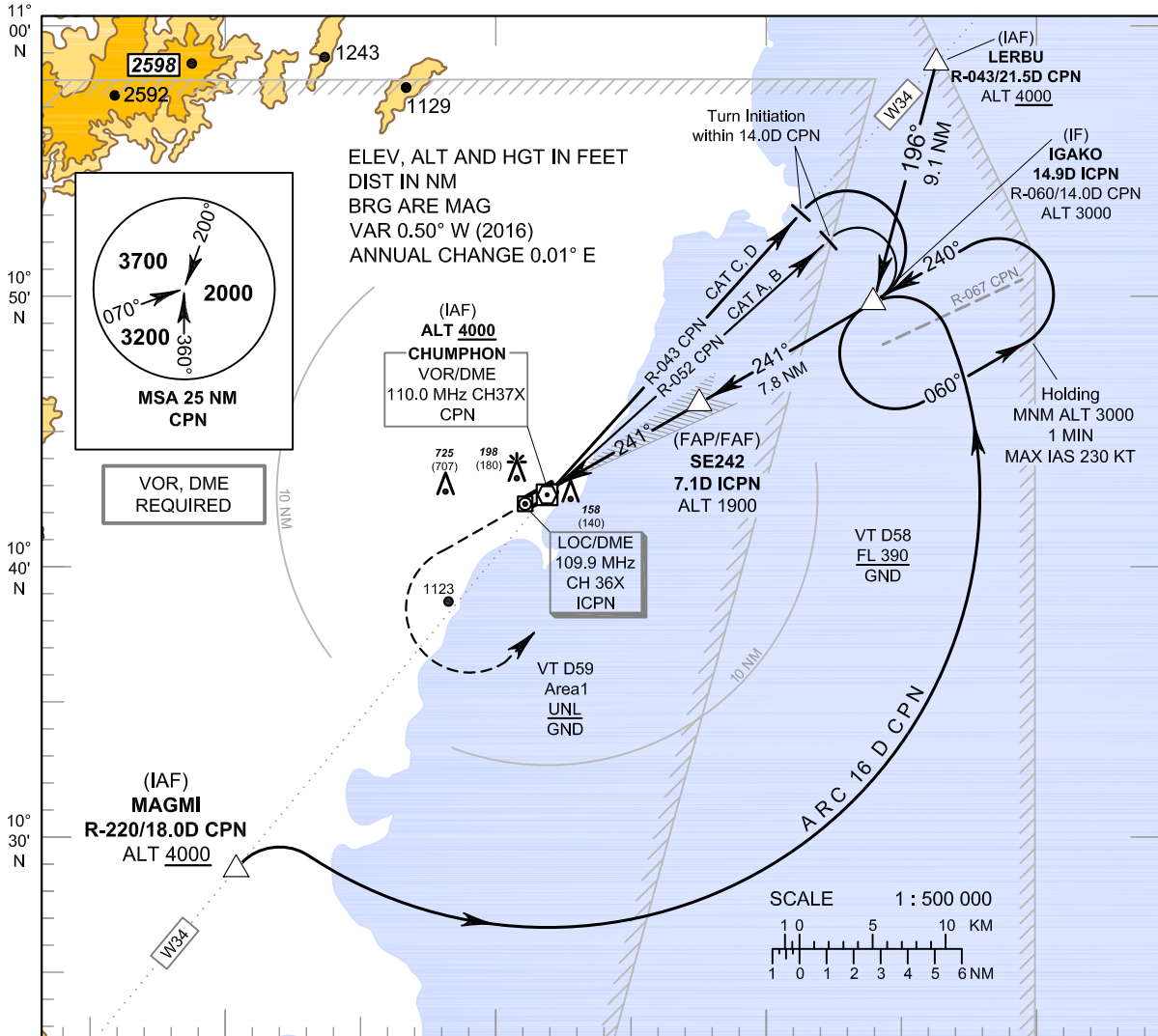
FIX/POINT		COORDINATES	
(IAF) OBKAN	R-043 / 20.5D CPN	10° 57' 52.72" N	099° 35' 54.90" E
(IAF) MAGMI	R-220 / 18.0D CPN	10° 28' 46.08" N	099° 10' 14.75" E
(IF)	R-059 / 14.0D CPN	10° 50' 03.39" N	099° 34' 02.29" E
(FAF)	R-059 / 6.2D CPN	10° 45' 56.54" N	099° 27' 17.59" E
(MAPt)	R-059 / 0.4D CPN	10° 42' 52.03" N	099° 22' 15.38" E
VOR	CPN	10° 42' 40.21" N	099° 21' 56.03" E

**INSTRUMENT
APPROACH
CHART - ICAO**

AERODROME ELEV 18 FT
HEIGHTS RELATED TO
THR RWY24 - ELEV 18 FT

APP : 122.6
TWR : 122.15 , 236.6
ATIS : 128.45

CHUMPHON / Chumphon (VTSE)
ILS or LOC y RWY24



MISSED APPROACH :

MAPt (FAP/FAF) (IF)

No turn before MAPt.
Climb straight ahead to 1500 FT, then turn left to intercept outbound R-060 CPN VOR, then proceed to IF at 3000 FT and hold or as directed by ATC.

DME FM LOC/DME 0 1.3 2.8 7.1 14.9 (THR RWY24)

NM FM THR 0 1.5 5.8 13.6

OCA/H		A	B	C	D	GS out	Distance to ICPN	2.8 D	3 D	4 D	5 D	6 D	FAF	
Straight - in Approach	CAT I	390 (372)						Altitude (Height)	540 (522)	605 (587)	920 (902)	1235 (1217)	1550 (1532)	1900 (1882)
	LOC only	540 (522)					Ground speed	knot	70	90	100	120	140	160
Circling (OCH AAL)		1500 (1482)					Rate of descent (5.2%)	ft/min	369	474	527	632	737	843

RDH 50 FT
TA 11000
ELEV 18 FT

CHANGE : ATIS FREQUENCY ADDED.

**INSTRUMENT
APPROACH
CHART - ICAO**

**AERODROME ELEV 18 FT
HEIGHTS RELATED TO
THR RWY24 - ELEV 18 FT**

**CHUMPHON / Chumphon (VTSE)
ILS or LOC y RWY24**

FIX/POINT		COORDINATES	
(IAF) LERBU	R-043 / 21.5D CPN	10° 58' 37.01" N	099° 36' 35.66" E
(IAF) MAGMI	R-220 / 18.0D CPN	10° 28' 46.08" N	099° 10' 14.75" E
(IF) IGAKO	14.9D ICPN	10° 49' 46.39" N	099° 34' 10.81" E
(FAP/FAF) SE242	7.1D ICPN	10° 45' 51.86" N	099° 27' 18.51" E
(MAPt) THR RWY24	1.3D ICPN	10° 42' 57.41" N	099° 22' 12.14" E
LOC/DME	ICPN	10° 42' 18.37" N	099° 21' 03.61" E
GP	ICPN	10° 42' 49.31" N	099° 22' 05.84" E
VOR	CPN	10° 42' 40.21" N	099° 21' 56.03" E

**INSTRUMENT
APPROACH
CHART - ICAO**

**AERODROME ELEV 18 FT
HEIGHTS RELATED TO
THR RWY24 - ELEV 18 FT**

CHUMPHON / Chumphon (VTSE)

ILS or LOC z RWY24

TABULAR DESCRIPTION

ILS or LOC z RWY24											
Serial Number	Path Descriptor	Waypoint Identifier	Flyover	Course ° M (° T)	Magnetic Variation	Distance (NM)	Turn Direction	Altitude (FT)	Speed (KT)	VPA/ TCH	Navigation Specification
010	IF	ANDET	-	-	+0.48	-	-	-7000	-	-	RNP1
020	TF	LERBU (IAF)	-	223° (222.3°)	+0.48	7.0	L	+5000	-	-	RNP1
030	TF	IGAKO (IF)	-	196° (195.1°)	+0.48	9.1	-	@3000	-	-	RNP1
010	IF	MAGMI (IAF)	-	-	+0.48	-	-	+8000	-	-	RNP1
020	TF	SE244	-	063° (062.4°)	+0.48	15.9	L	+8000	-	-	RNP1
030	TF	SE243	-	061° (060.1°)	+0.48	15.0	L	+5000	-	-	RNP1
040	TF	IGAKO (IF)	-	331° (330.1°)	+0.48	7.0	-	@3000	-	-	RNP1
010	IF	IGAKO (IF)	-	-	+0.48	-	-	@3000	-	-	RNP1
TRANSITION TO ILS or LOC											
020	TF	SE242 (FAF)	-	241° (240.1°)	+0.48	7.8	-	@1900	-	-	ILS
030	TF	SE241 (MAPt)	Y	241° (240.1°)	+0.48	5.8	-	@68	-	-3.0/50	ILS
040	CA	-	-	241° (240.1°)	+0.48	-	-	+1500	-	-	RNP1
050	DF	IGAKO (IF)	-	-	+0.48	-	L	+3000	-	-	RNP1
060	HM	IGAKO (IF)	Y	241° (240.1°)	+0.48	1 minute	L	+3000	-230	-	RNP1

WAYPOINT LIST

ILS or LOC z RWY24	
Waypoint Identifier	Coordinates
ANDET	11° 03' 49.09" N 099° 41' 23.06" E
LERBU	10° 58' 37.01" N 099° 36' 35.66" E
MAGMI	10° 28' 46.08" N 099° 10' 14.75" E
SE244	10° 36' 09.74" N 099° 24' 31.21" E
SE243	10° 43' 40.62" N 099° 37' 43.51" E
IGAKO	10° 49' 46.39" N 099° 34' 10.81" E
SE242	10° 45' 51.86" N 099° 27' 18.51" E
SE241	10° 42' 57.41" N 099° 22' 12.14" E

**INSTRUMENT
APPROACH
CHART - ICAO**

**AERODROME ELEV 18 FT
HEIGHTS RELATED TO
THR RWY24 - ELEV 18 FT**

CHUMPHON / Chumphon (VTSE)

ILS or LOC z RWY24

FIX/POINT		COORDINATES	
(IF) IGAKO	14.9D ICPN	10° 49' 46.39" N	099° 34' 10.81" E
(FAP/FAF) SE242	7.1D ICPN	10° 45' 51.86" N	099° 27' 18.51" E
(MAPt) THR RWY24	1.3D ICPN	10° 42' 57.41" N	099° 22' 12.14" E
LOC/DME	ICPN	10° 42' 18.37" N	099° 21' 03.61" E
GP	ICPN	10° 42' 49.31" N	099° 22' 05.84" E

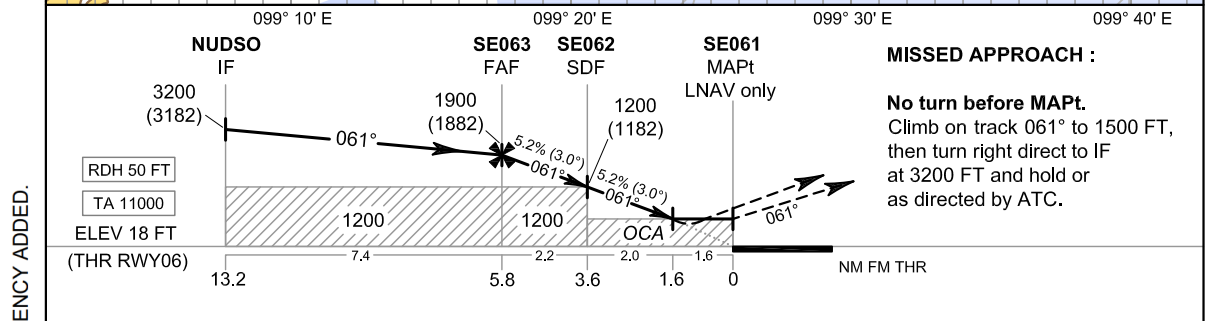
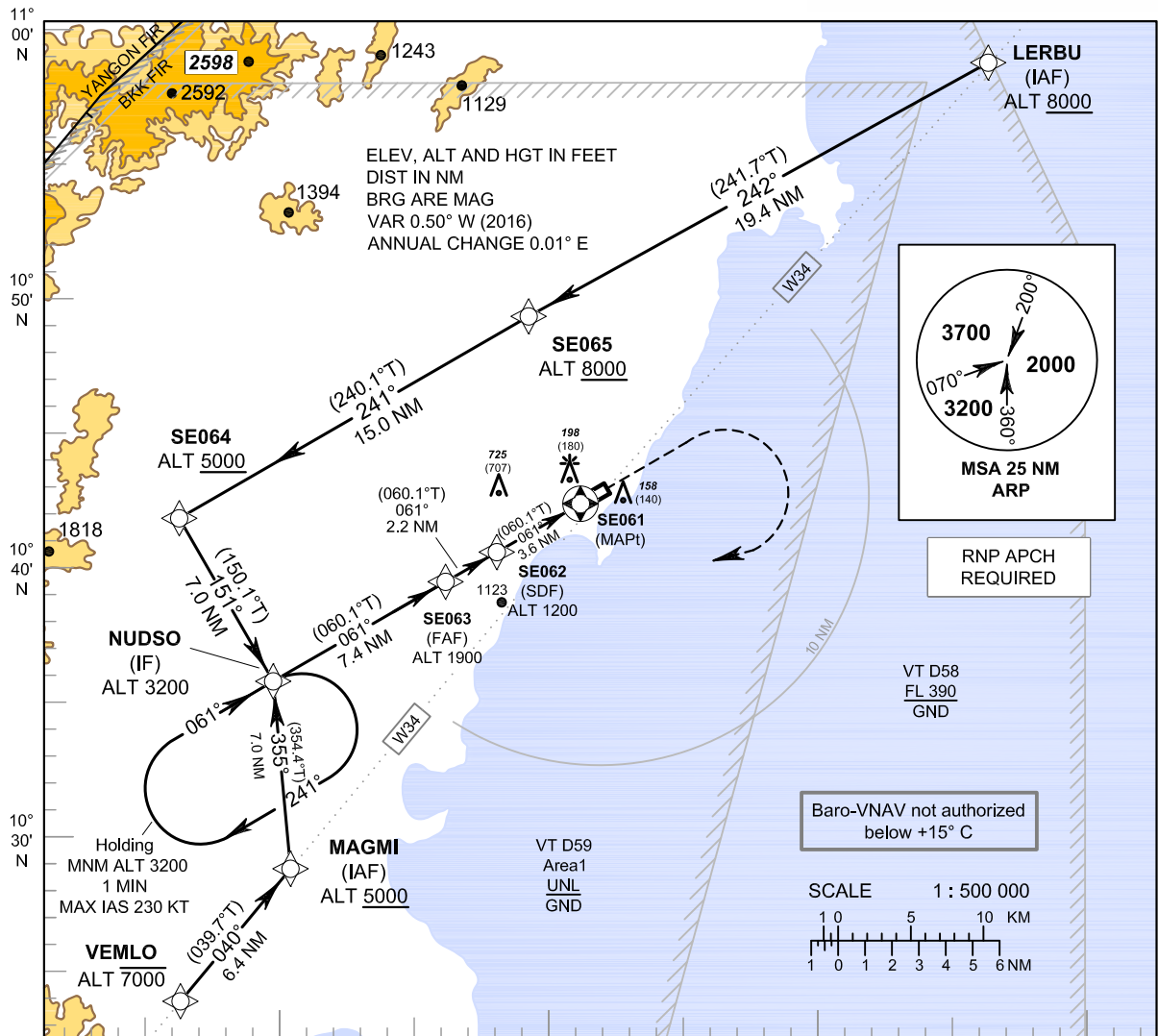
INTENTIONALLY BLANK

**INSTRUMENT
APPROACH
CHART - ICAO**

**AERODROME ELEV 18 FT
HEIGHTS RELATED TO
AERODROME ELEV**

APP : 122.6
TWR : 122.15 , 236.6
ATIS : 128.45

CHUMPHON / Chumphon (VTSE)
RNP RWY06



OCA/H	A	B	C	D	NM to NEXT WPT	FAF	5 NM	SDF	3 NM	2 NM	1.6 NM	
LNAV/VNAV	430 (412)				Altitude (Height)	1900 (1882)	1650 (1632)	1200 (1182)	1015 (997)	700 (682)	570 (552)	
LNAV	570 (552)				Ground speed	knot	70	90	100	120	140	160
Circling (OCH AAL)	1500 (1482)				Rate of descent (5.2%)	ft/min	369	474	527	632	737	843

CHANGE : ATIS FREQUENCY ADDED.

INSTRUMENT
APPROACH
CHART - ICAO

AERODROME ELEV 18 FT
HEIGHTS RELATED TO
AERODROME ELEV

CHUMPHON / Chumphon (VTSE)

RNP RWY06

TABULAR DESCRIPTION

RNP RWY06											
Serial Number	Path Descriptor	Waypoint Identifier	Flyover	Course ° M (° T)	Magnetic Variation	Distance (NM)	Turn Direction	Altitude (FT)	Speed (KT)	VPA/ TCH	Navigation Specification
010	IF	VEMLO	-	-	+0.48	-	-	-7000	-	-	RNP APCH
020	TF	MAGMI (IAF)	-	040° (039.7°)	+0.48	6.4	L	+5000	-	-	RNP APCH
030	TF	NUDSO (IF)	-	355° (354.4°)	+0.48	7.0	-	@3200	-	-	RNP APCH
010	IF	LERBU (IAF)	-	-	+0.48	-	-	+8000	-	-	RNP APCH
020	TF	SE065	-	242° (241.7°)	+0.48	19.4	L	+8000	-	-	RNP APCH
030	TF	SE064	-	241° (240.1°)	+0.48	15.0	L	+5000	-	-	RNP APCH
040	TF	NUDSO (IF)	-	151° (150.1°)	+0.48	7.0	-	@3200	-	-	RNP APCH
010	IF	NUDSO (IF)	-	-	+0.48	-	-	@3200	-	-	RNP APCH
020	TF	SE063 (FAF)	-	061° (060.1°)	+0.48	7.4	-	@1900	-	-	RNP APCH
030	TF	SE062 (SDF)	-	061° (060.1°)	+0.48	2.2	-	@1200	-	-	RNP APCH
040	TF	SE061 (MAPt)	Y	061° (060.1°)	+0.48	3.6	-	@68	-	-3.0/50	RNP APCH
050	CA	-	-	061° (060.1°)	+0.48	-	-	+1500	-	-	RNP APCH
060	DF	NUDSO (IF)	-	-	+0.48	-	R	+3200	-	-	RNP APCH
070	HM	NUDSO (IF)	Y	061° (060.1°)	+0.48	1 minute	R	+3200	-230	-	RNP APCH

WAYPOINT LIST

RNP RWY06	
Waypoint Identifier	Coordinates
VEMLO	10° 23' 48.85" N 099° 06' 05.20" E
MAGMI	10° 28' 46.08" N 099° 10' 14.75" E
LERBU	10° 58' 37.01" N 099° 36' 35.66" E
SE065	10° 49' 21.98" N 099° 19' 12.44" E
SE064	10° 41' 50.31" N 099° 06' 00.35" E
NUDSO	10° 35' 44.86" N 099° 09' 33.53" E
SE063	10° 39' 28.68" N 099° 16' 05.89" E
SE062	10° 40' 34.90" N 099° 18' 02.04" E
SE061	10° 42' 23.23" N 099° 21' 12.14" E

CHANGE : CHART TITLE.

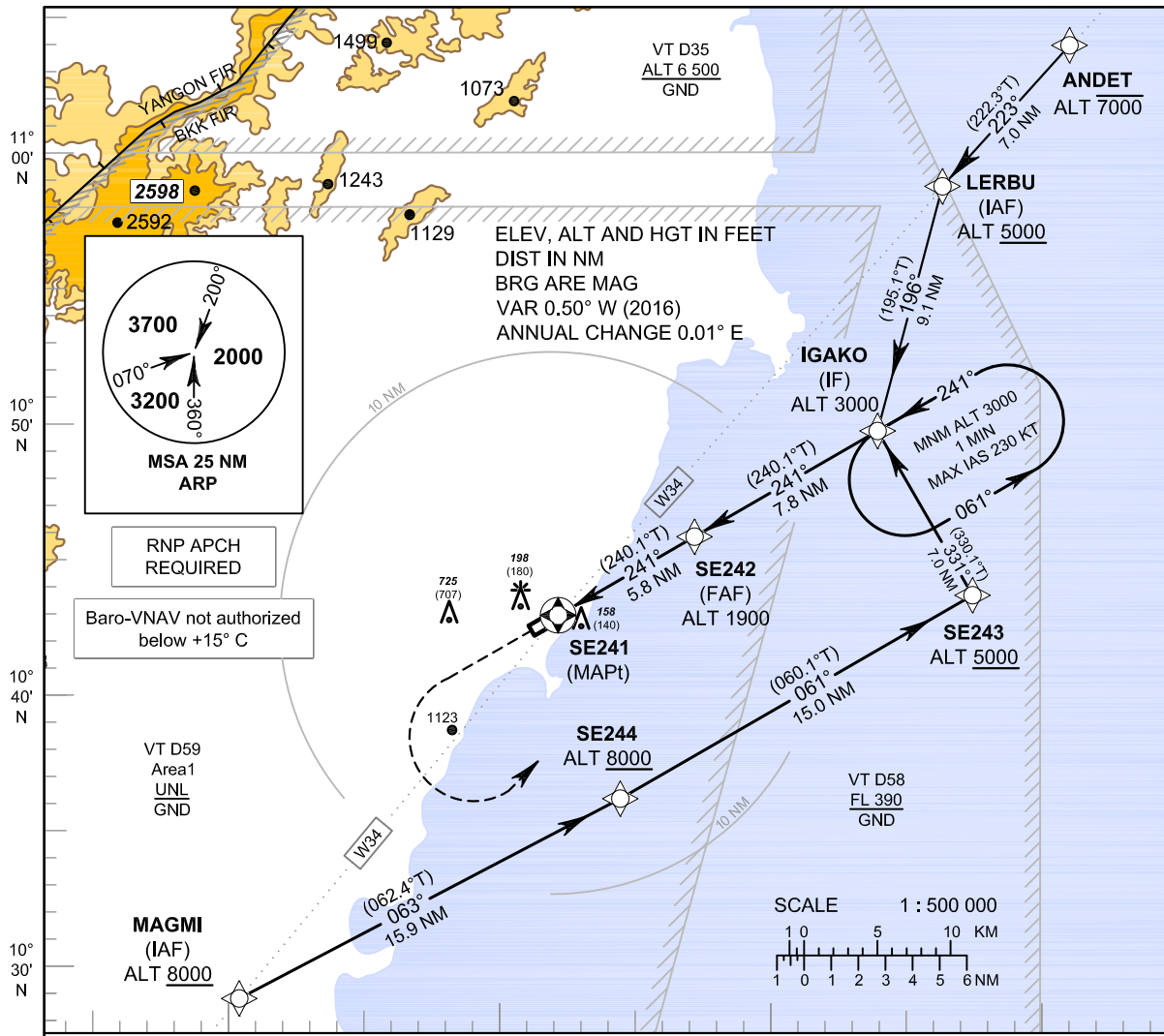
**INSTRUMENT
APPROACH
CHART - ICAO**

**AERODROME ELEV 18 FT
HEIGHTS RELATED TO
AERODROME ELEV**

APP : 122.6
TWR : 122.15 , 236.6
ATIS : 128.45

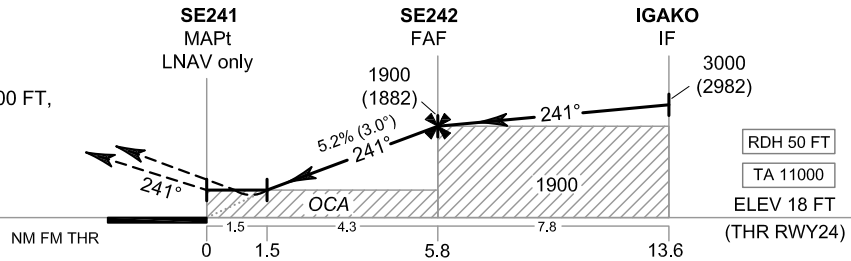
CHUMPHON / Chumphon (VTSE)

RNP RWY24



MISSED APPROACH :

No turn before MAPt.
Climb on track 241° to 1500 FT,
then turn left direct to IF
at 3000 FT and hold or
as directed by ATC.



CHANGE : ATIS FREQUENCY ADDED.

OCA/H	A	B	C	D	NM to NEXT WPT	1.5 NM	2 NM	3 NM	4 NM	5 NM	FAF		
LNNAV/VNAV	400 (382)				Altitude (Height)	540 (522)	700 (682)	1015 (997)	1330 (1312)	1650 (1632)	1900 (1882)		
LNNAV	540 (522)				Ground speed	knot		70	90	100	120	140	160
Circling (OCH AAL)	1500 (1482)				Rate of descent (5.2%)	ft/min		369	474	527	632	737	843

INSTRUMENT
APPROACH
CHART - ICAO

AERODROME ELEV 18 FT
HEIGHTS RELATED TO
AERODROME ELEV

CHUMPHON / Chumphon (VTSE)

RNP RWY24

TABULAR DESCRIPTION

RNP RWY24											
Serial Number	Path Descriptor	Waypoint Identifier	Flyover	Course ° M (° T)	Magnetic Variation	Distance (NM)	Turn Direction	Altitude (FT)	Speed (KT)	VPA/TCH	Navigation Specification
010	IF	ANDET	-	-	+0.48	-	-	-7000	-	-	RNP APCH
020	TF	LERBU (IAF)	-	223° (222.3°)	+0.48	7.0	L	+5000	-	-	RNP APCH
030	TF	IGAKO (IF)	-	196° (195.1°)	+0.48	9.1	-	@3000	-	-	RNP APCH
010	IF	MAGMI (IAF)	-	-	+0.48	-	-	+8000	-	-	RNP APCH
020	TF	SE244	-	063° (062.4°)	+0.48	15.9	L	+8000	-	-	RNP APCH
030	TF	SE243	-	061° (060.1°)	+0.48	15.0	L	+5000	-	-	RNP APCH
040	TF	IGAKO (IF)	-	331° (330.1°)	+0.48	7.0	-	@3000	-	-	RNP APCH
010	IF	IGAKO (IF)	-	-	+0.48	-	-	@3000	-	-	RNP APCH
020	TF	SE242 (FAF)	-	241° (240.1°)	+0.48	7.8	-	@1900	-	-	RNP APCH
030	TF	SE241 (MAPt)	Y	241° (240.1°)	+0.48	5.8	-	@68	-	-3.0/50	RNP APCH
040	CA	-	-	241° (240.1°)	+0.48	-	-	+1500	-	-	RNP APCH
050	DF	IGAKO (IF)	-	-	+0.48	-	L	+3000	-	-	RNP APCH
060	HM	IGAKO (IF)	Y	241° (240.1°)	+0.48	1 minute	L	+3000	-230	-	RNP APCH

WAYPOINT LIST

RNP RWY24	
Waypoint Identifier	Coordinates
ANDET	11° 03' 49.09" N 099° 41' 23.06" E
LERBU	10° 58' 37.01" N 099° 36' 35.66" E
MAGMI	10° 28' 46.08" N 099° 10' 14.75" E
SE244	10° 36' 09.74" N 099° 24' 31.21" E
SE243	10° 43' 40.62" N 099° 37' 43.51" E
IGAKO	10° 49' 46.39" N 099° 34' 10.81" E
SE242	10° 45' 51.86" N 099° 27' 18.51" E
SE241	10° 42' 57.41" N 099° 22' 12.14" E

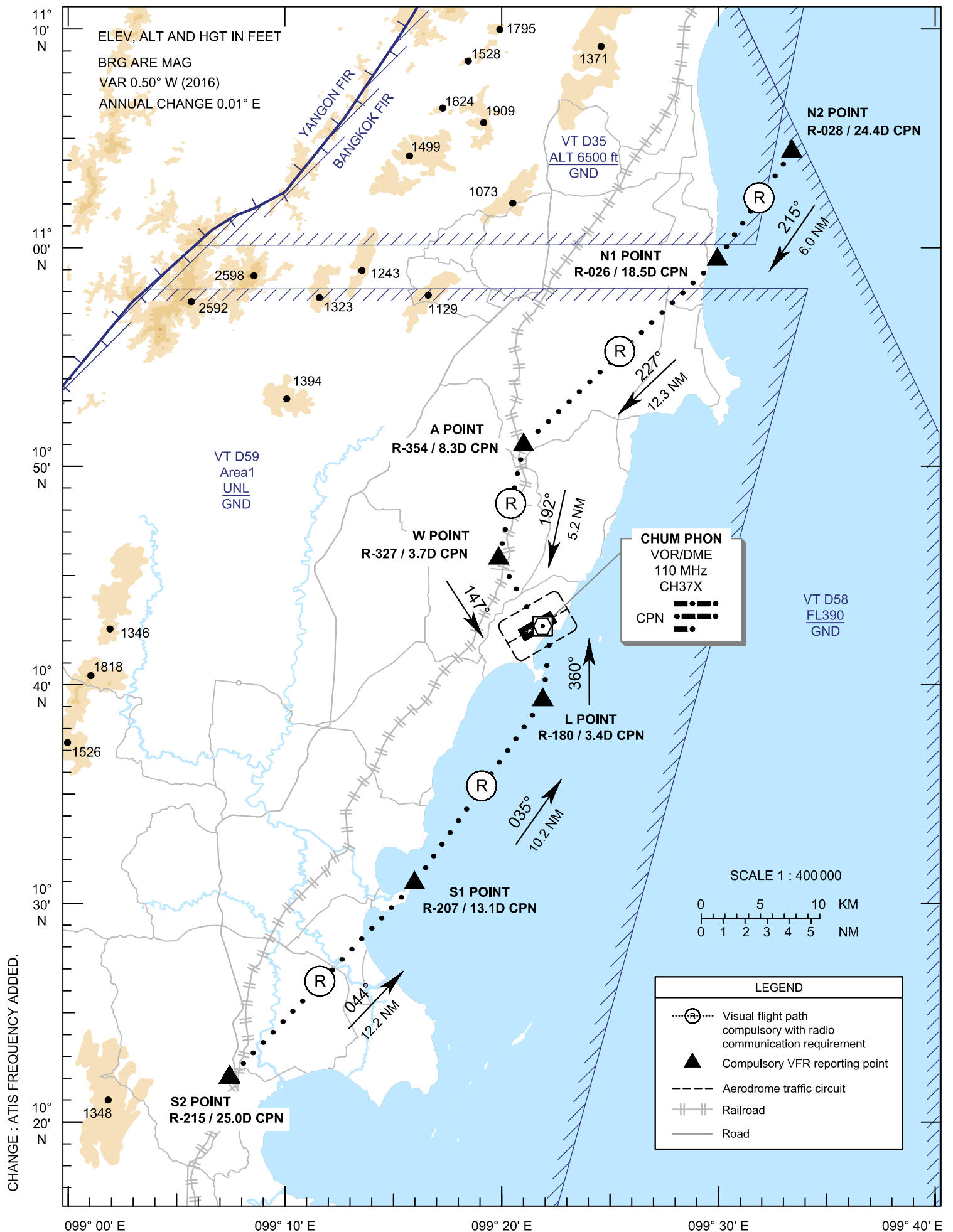
CHANGE : CHART TITLE.

**VFR ENTRY
PROCEDURE
CHART**

**AERODROME ELEV 18 FT
HEIGHT RELATED TO
AERODROME ELEV**

APP : 122.6
TWR : 122.15 , 236.6
ATIS : 128.45

**CHUMPHON /
Chumphon (VTSE)
RWY 06/24**



VFR ENTRY
PROCEDURE
CHART

AERODROME ELEV 18 FT
HEIGHT RELATED TO
AERODROME ELEV

CHUMPHON /
Chumphon (VTSE)
RWY 06/24

ARR-RWY06/24 (From North)

Enter via most direct route through the N2 POINT, then heading 215° to N1 POINT, heading 227° to A POINT then heading 192° to W POINT, then join aerodrome traffic circuit when direct by ATC.

ARR-RWY06/24 (From South)

Enter via most direct route through the S2 POINT, then heading 044° to S1 POINT, heading 035° to L POINT, then join aerodrome traffic circuit when direct by ATC.

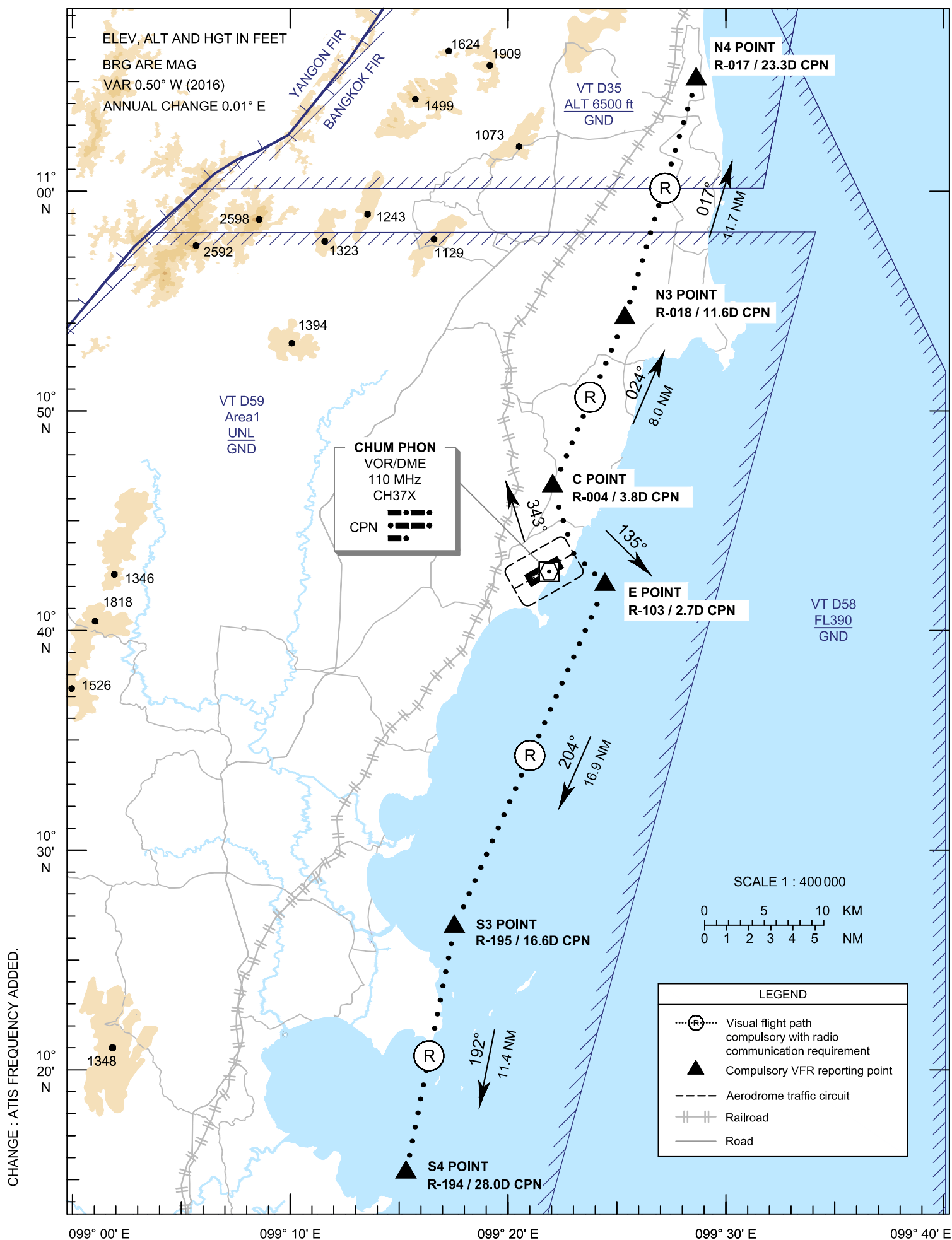
Reporting points	Visual Reference	Radial / DME	Coordinates	
			Latitude	Longitude
A POINT	Ban Map Ammarit	R-354 / 8.3D CPN	10° 50' 55.10" N	099° 21' 00.20" E
L POINT	Lam Tan Cape	R-180 / 3.4D CPN	10° 39' 17.80" N	099° 21' 56.20" E
N1 POINT	Khao Bang Berd	R-026 / 18.5D CPN	10° 59' 26.02" N	099° 30' 02.59" E
N2 POINT	Koh Talu Island	R-028 / 24.4D CPN	11° 04' 22.70" N	099° 33' 30.00" E
S1 POINT	Lam Kor Kwang (Hua Mong) Cape	R-207 / 13.1D CPN	10° 30' 55.41" N	099° 16' 00.27" E
S2 POINT	Khao Chedi Temple	R-215 / 25.0D CPN	10° 22' 01.97" N	099° 07' 27.43" E
W POINT	Erawan Nantiyaram Temple	R-327 / 3.7D CPN	10° 45' 46.50" N	099° 19' 54.50" E
CPN VOR/DME	-	-	10° 42' 40.21" N	099° 21' 56.03" E

**VFR EXIT
PROCEDURE
CHART**

**AERODROME ELEV 18 FT
HEIGHT RELATED TO
AERODROME ELEV**

APP : 122.6
TWR : 122.15 , 236.6
ATIS : 128.45

**CHUMPHON /
Chumphon (VTSE)
RWY 06**



VFR EXIT
PROCEDURE
CHART

AERODROME ELEV 18 FT
HEIGHT RELATED TO
AERODROME ELEV

CHUMPHON /
Chumphon (VTSE)
RWY 06

DEP-RWY06 (To North)

After departure left turn heading 343° to C POINT, then heading 024° to N3 POINT, then heading 017° to N4 POINT, then proceed to destination.

DEP-RWY06 (To South)

After departure right turn heading 135° to E POINT, then heading 204° to S3 POINT, then heading 192° to S4 POINT, then proceed to destination.

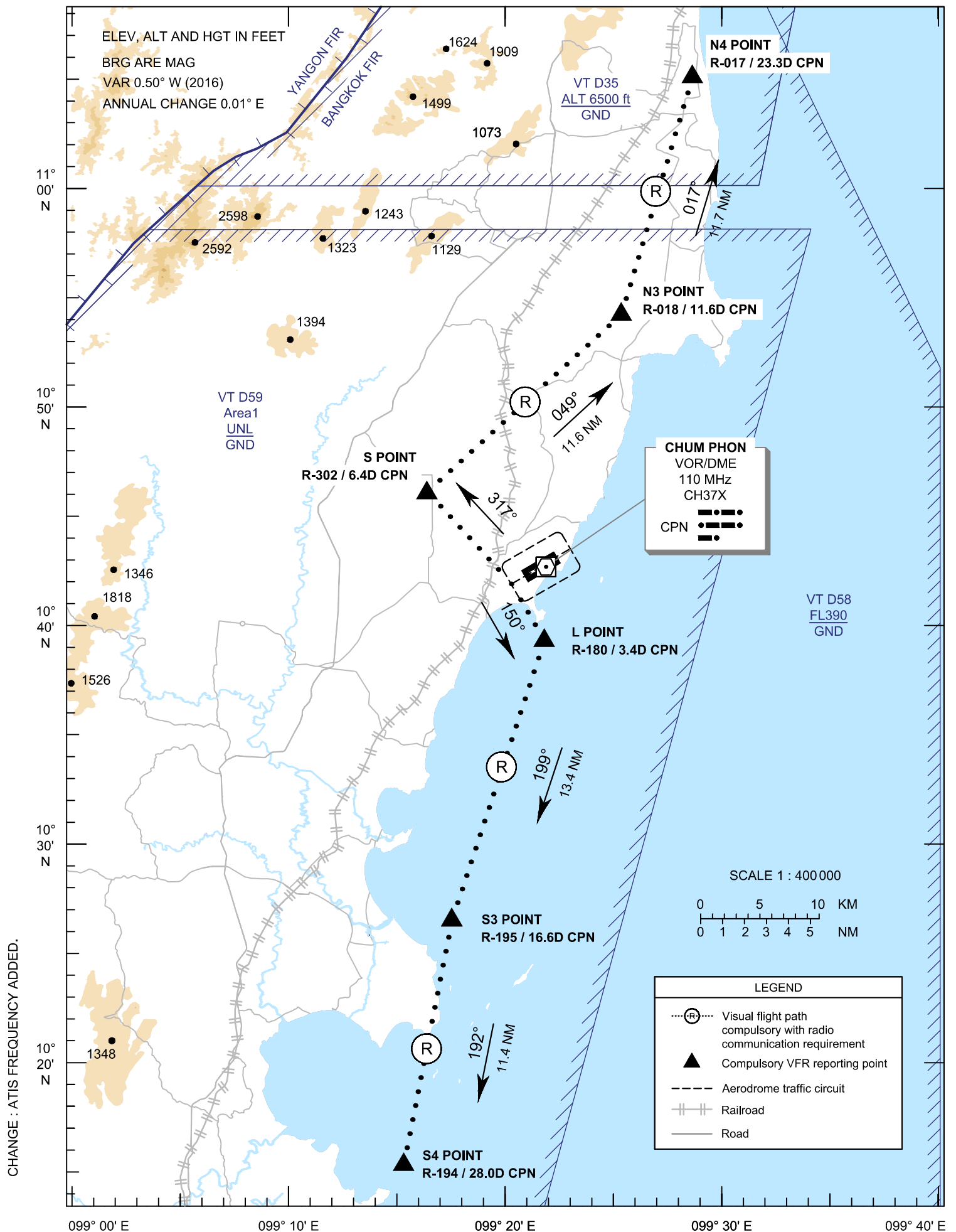
Reporting points	Landmark	Radial / DME	Coordinates	
			Latitude	Longitude
C POINT	Chum Kho (Office of subdistrict Municipality)	R-004 / 3.8D CPN	10° 46' 28.00" N	099° 22' 11.00" E
E POINT	Koh Kai Island	R-103 / 2.7D CPN	10° 42' 04.70" N	099° 24' 36.50" E
N3 POINT	Bang Waen (Road Intersection)	R-018 / 11.6D CPN	10° 53' 47.98" N	099° 25' 26.66" E
N4 POINT	Bang Saphan Noi	R-017 / 23.3D CPN	11° 05' 04.86" N	099° 28' 49.98" E
S3 POINT	Koh Samed Chumphon Island	R-195 / 16.6D CPN	10° 26' 30.72" N	099° 17' 39.01" E
S4 POINT	Koh Kula Island	R-194 / 28.0D CPN	10° 15' 19.50" N	099° 15' 24.90" E
CPN VOR/DME	-	-	10° 42' 40.21" N	099° 21' 56.03" E

**VFR EXIT
PROCEDURE
CHART**

**AERODROME ELEV 18 FT
HEIGHT RELATED TO
AERODROME ELEV**

APP : 122.6
TWR : 122.15 , 236.6
ATIS : 128.45

**CHUMPHON /
Chumphon (VTSE)
RWY 24**



VFR EXIT
PROCEDURE
CHART

AERODROME ELEV 18 FT
HEIGHT RELATED TO
AERODROME ELEV

CHUMPHON /
Chumphon (VTSE)
RWY 24

DEP-RWY24 (To North)

After departure right turn heading 317° to S POINT, then heading 049° to N3 POINT, then heading 017° to N4 POINT, then proceed to destination.

DEP-RWY24 (To South)

After departure left turn heading 150° to L POINT, then heading 199° to S3 POINT, then heading 192° to S4 POINT, then proceed to destination.

Reporting points	Landmark	Radial / DME	Coordinates	
			Latitude	Longitude
L POINT	Lam Tan Cape	R-180 / 3.4D CPN	10° 39' 17.80" N	099° 21' 56.20" E
N3 POINT	Bang Waen (Road Intersection)	R-018 / 11.6D CPN	10° 53' 47.98" N	099° 25' 26.66" E
N4 POINT	Bang Saphan Noi	R-017 / 23.3D CPN	11° 05' 04.86" N	099° 28' 49.98" E
S POINT	Sahakorn Prachanukul School	R-303 / 6.3D CPN	10° 46' 06.90" N	099° 16' 31.90" E
S3 POINT	Koh Samed Chumphon Island	R-195 / 16.6D CPN	10° 26' 30.72" N	099° 17' 39.01" E
S4 POINT	Koh Kula Island	R-194 / 28.0D CPN	10° 15' 19.50" N	099° 15' 24.90" E
CPN VOR/DME	-	-	10° 42' 40.21" N	099° 21' 56.03" E