

VTSC AD 2.1 AERODROME LOCATION INDICATOR AND NAME

VTSC - NARATHIWAT / NARATHIWAT AIRPORT

VTSC AD 2.2 AERODROME GEOGRAPHICAL AND ADMINISTRATIVE DATA

1	ARP coordinates and site at AD	063123.66N 1014441.43E
2	Direction and distance from (city)	13 KM SE, from city
3	Elevation/Reference temperature	18 FT/29°C
4	Geoid Undulation at AD ELEV PSN	NIL
5	MAG VAR/Annual change	0.19°W (2016)/0.00°E
6	AD Administration, address, telephone, telefax, telex, AFS	Director Of Narathiwat Airport Narathiwat Airport Main Office Narathiwat Province Thailand Tel: +667 356 5061-5 Fax: +667 356 5066 AFS: VTSCYDYX
7	Types of traffic permitted (IFR/VFR)	IFR/VFR
8	Remarks	Operator: Department of Airports

VTSC AD 2.3 OPERATIONAL HOURS

1	Aerodrome Operator	2300-1100
2	Customs and immigration	On request
3	Health and sanitation	On request
4	AIS Briefing Office	NIL
5	ATS Reporting Office (ARO)	2300-1100
6	MET Briefing Office	NIL
7	ATS	2300-1100
8	Fuelling	NIL
9	Handling	NIL
10	Security	NIL
11	De-icing	NIL
12	Remarks	ATS Reporting Office (ARO): Located at Hat Yai Air Traffic Control Centre (1st floor of tower building) Tel: +669 2262 2436 Fax: +667 425 1050

VTSC AD 2.4 HANDLING SERVICES AND FACILITIES

1	Cargo-handling facilities	NIL
2	Fuel/oil types	NIL
3	Fuelling facilities/capacity	NIL
4	De-icing facilities	NIL
5	Hangar space for visiting aircraft	NIL
6	Repair facilities for visiting aircraft	NIL
7	Remarks	NIL

VTSC AD 2.5 PASSENGER FACILITIES

1	Hotels	In the city
2	Restaurants	In the city
3	Transportation	NIL
4	Medical facilities	NIL
5	Bank and Post Office	NIL
6	Tourist Office	NIL
7	Remarks	NIL

VTSC AD 2.6 RESCUE AND FIRE FIGHTING SERVICES

1	AD category for fire fighting	Category 6
2	Rescue equipment	Yes
3	Capability for removal of disabled aircraft	NIL
4	Remarks	NIL

VTSC AD 2.7 SEASONAL AVAILABILITY - CLEARING

1	Types of clearing equipment	NIL
2	Clearance priorities	NIL
3	Remarks	The aerodrome is available all seasons

VTSC AD 2.8 APRONS, TAXIWAYS AND CHECK LOCATIONS/POSITIONS DATA

1	Apron surface and strength	Surface: Concrete Strength: PCN 65/R/C/X/T
2	Taxiway width, surface and strength	Width: 23 M Surface: Concrete and asphalt Strength: PCN 65/F/C/X/T
3	Altimeter checkpoint location and elevation	NIL
4	VOR checkpoints	NIL
5	INS checkpoints	NIL
6	Remarks	NIL

VTSC AD 2.9 SURFACE MOVEMENT GUIDANCE AND CONTROL SYSTEM AND MARKINGS

1	Use of aircraft stand ID signs, TWY guide lines and visual docking/parking guidance system of aircraft stands	NIL
2	RWY and TWY markings and LGT	RWY AND TWY: Marked and lighted
3	Stop bars	NIL
4	Remarks	NIL

VTSC AD 2.10 AERODROME OBSTACLES

In approach/TKOF areas			In circling areas and at AD		Remarks
1			2		
RWY/Area affected	Obstacle type Elevation Markings/LGT	Coordinates	Obstacle type Elevation Markings/LGT	Coordinates	
a	b	c	a	b	
NIL	NIL	NIL	NIL	NIL	NIL

VTSC AD 2.11 METEOROLOGICAL INFORMATION PROVIDED

1	Associated MET Office	Aeronautical Meteorological Station-Narathiwat, Southern East-Coast Meteorological Center, Thai Meteorological Department (TMD)
2	Hours of service MET Office outside hours	0000-1000 NIL
3	Office responsible for TAF preparation Periods of validity	Supply TAF from Southern East-Coast Meteorological Center 24 HR
4	Type of landing forecast Interval of issuance	TREND 1 HR
5	Briefing/consultation provided	Personal Consultation Tel: +667 356 5077 ext. 6606
6	Flight documentation Language(s) used	NIL
7	Charts and other information available for briefing or consultation	S, U85, Daily Weather Forecast, satellite and radar images
8	Supplementary equipment available for providing information	Automated Weather Observation System (AWOS), Weather Radar
9	ATS units provided with information	Narathiwat TWR
10	Additional information (limitation of service, etc.)	NIL

VTSC AD 2.12 RUNWAY PHYSICAL CHARACTERISTICS

Designations RWY NR	TRUE BRG	Dimensions of RWY(M)	Strength (PCN) and surface of RWY and SWY	THR coordinates RWY end coordinates THR geoid undulation	THR elevation and highest elevation of TDZ of precision APP RWY
1	2	3	4	5	6
02	020.35°	2500x45	PCN 65/F/C/X/T Concrete and asphalt	063026.99N 1014416.85E	THR 18 FT TDZ 18 FT
20	202.35°	2500x45	PCN 65/F/C/X/T Concrete and asphalt	063141.64N 1014449.22E	THR 18 FT TDZ 18 FT

Slope of RWY-SWY	SWY dimensions (M)	CWY dimensions (M)	Strip dimensions (M)	OFZ	Remarks
7	8	9	10	11	12
NIL	60x45	NIL	2740x300	NIL	NIL
NIL	60x45	NIL	2740x300	NIL	NIL

VTSC AD 2.13 DECLARED DISTANCES

RWY Designator	TORA (M)	TODA (M)	ASDA (M)	LDA (M)	Remarks
1	2	3	4	5	6
02	2500	2500	2560	2500	NIL
20	2500	2500	2560	2500	NIL

VTSC AD 2.14 APPROACH AND RUNWAY LIGHTING

RWY Designator	APCH LGT type LEN INTST	THR LGT colour WBAR	VASIS (MEHT) PAPI	TDZ, LGT LEN	RWY Centre Line LGT Length, spacing, colour, INTST	RWY edge LGT LEN, spacing, colour INTST	RWY End LGT colour WBAR	SWY LGT LEN (M) colour	Remarks
1	2	3	4	5	6	7	8	9	10
02	CAT1 900M LIH	Green	PAPI Left 3°	NIL	NIL	2500 M 60 M White, LIH	Red	NIL	NIL
20	SALS 300M LIH	Green	PAPI Left 3°	NIL	NIL	2500 M 60 M White, LIH	Red	NIL	NIL

VTSC AD 2.15 OTHER LIGHTING, SECONDARY POWER SUPPLY

1	ABN/IBN location, characteristics and hours of operation	ABN: At tower building, FLG W G EV 7 SEC
2	LDI location and LGT Anemometer location and LGT	NIL
3	TWY edge and centre line lighting	EDGE: ALL TWY
4	Secondary power supply/switch-over time	Secondary power supply to all lighting at the airport Switch-over time: 15 SEC
5	Remarks	NIL

VTSC AD 2.16 HELICOPTER LANDING AREA

1	Coordinates TLOF or THR of FATO Geoid undulation	NIL
2	TLOF and/or FATO elevation M/FT	NIL
3	TLOF and FATO area dimensions, surface, strength, marking	NIL
4	True and MAG BRG of FATO	NIL
5	Declared distance available	NIL
6	APP and FATO lighting	NIL
7	Remarks	NIL

VTSC AD 2.17 ATS AIRSPACE

1	Designation and lateral limits	A circle of 5 NM radius centred on NTW DVOR/DME (063138.24N 1014442.48E)
2	Vertical limits	2000 FT/AGL
3	Airspace classification	C
4	ATS unit call sign Language(s)	Narathiwat Tower English, Thai
5	Transition altitude	11000 FT
6	Remarks	NIL

VTSC AD 2.18 ATS COMMUNICATION FACILITIES

Service designation	Call sign	Frequency	Hours of operation	Remarks
1	2	3	4	5
APP	Narathiwat Approach	125.55 MHZ 121.5 MHZ ¹⁾	As AD OPR HR	¹⁾ Emergency frequency
TWR	Narathiwat Tower	122.7 MHZ 236.6 MHZ 121.5 MHZ ¹⁾	As AD OPR HR	
GND	Narathiwat Ground	121.9 MHZ 121.5 MHZ ¹⁾	As AD OPR HR	
ATIS	Narathiwat Airport	383 KHZ	As AD OPR HR	

VTSC AD 2.19 RADIO NAVIGATION AND LANDING AIDS

Type of aid, MAG VAR CAT of ILS/MLS (For VOR/ILS/MLS, give declination)	ID	Frequency	Hours of operation	Position of transmitting antenna coordinates	Elevation of DME transmitting antenna	Remarks
1	2	3	4	5	6	7
NDB	NT	383KHZ	H24	063120.61N 1014454.75E		Output 400 watts. NDB, 50 NM coverage restriction as follows: <ul style="list-style-type: none"> - Bearing 260°-300° altitude should not below 5 500 FT - Bearing 301°-055° altitude should not below 1 500 FT - Bearing 056°-259° unable to perform flight inspection due to border limited
DVOR/DME	NTW	116.3MHZ CH110X	H24	063138.24N 1014442.48E		DVOR/DME restriction due to mountainous terrain surround DVOR/DME station, coverage check does not provide adequate signal to 40 NM at the required altitude in various areas as follows: <ol style="list-style-type: none"> 1. 40 NM clockwise orbit flown from <ul style="list-style-type: none"> - Radial 271°-290° altitude should not below 9 000 FT - Radial 291°-300° altitude should not below 4 000 FT - Radial 301°-020° altitude should not below 2 000 FT 2. 20 NM clockwise orbit flown from <ul style="list-style-type: none"> - Radial 021°-130° altitude should not below 2 000 FT - Radial 131°-270° altitude should not below 5 000 FT
ILS CAT I LOC RWY 02	INTW	110.1 MHZ	H24	063149.20N 1014452.49E		ILS coverage over a sector 035° either side of runway centreline, no back course and voice feature. Distance 1 050 M to THR RWY 02.
GP/DME		334.4 MHZ CH 38X	H24	063048.90N 1014430.60E		Narathiwat GP RWY 02 unusable beyond 6 degrees left of LOC course.

VTSC AD 2.20 LOCAL AERODROME REGULATIONS

For preventing runway pavement structural damage, aircraft with weight equivalent to or heavier than B737 or A319 are not allowed to make 180 degree turn on the runway. The turn shall be made on the runway turnpad located near the threshold of runway 02.

VTSC AD 2.21 NOISE ABATEMENT PROCEDURES

NIL

VTSC AD 2.22 FLIGHT PROCEDURES

NIL

VTSC AD 2.23 ADDITIONAL INFORMATION

1. BIRD CONCENTRATIONS

- Bird concentrations in the vicinity of an aerodrome.

VTSC AD 2.24 CHARTS RELATED TO AN AERODROME

Chart name	Page
Aerodrome Chart - ICAO	AD 2-VTSC-2-1
Instrument Approach Chart - ICAO - VOR RWY 02	AD 2-VTSC-8-1
Instrument Approach Chart - ICAO - VOR RWY 02 (Fix and point list table)	AD 2-VTSC-8-2
Instrument Approach Chart - ICAO - VOR RWY 20	AD 2-VTSC-8-3
Instrument Approach Chart - ICAO - VOR RWY 20 (Fix and point list table)	AD 2-VTSC-8-4
Instrument Approach Chart - ICAO - ILS or LOC RWY 02	AD 2-VTSC-8-5
Instrument Approach Chart - ICAO - ILS or LOC RWY 02 (Fix and point list table)	AD 2-VTSC-8-6
Instrument Approach Chart - ICAO - RNP RWY 02	AD 2-VTSC-8-7
Instrument Approach Chart - ICAO - RNP RWY 02 (Tabular description)	AD 2-VTSC-8-8
Instrument Approach Chart - ICAO - RNP RWY 20	AD 2-VTSC-8-9
Instrument Approach Chart - ICAO - RNP RWY 20 (Tabular description)	AD 2-VTSC-8-10

INTENTIONALLY BLANK

AERODROME CHART - ICAO

06 31 24 N
101 44 41 E

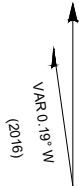
ELEV 18 ft

TWR 121.50 122.70
236.60

NARATHIWAT / Narathiwat

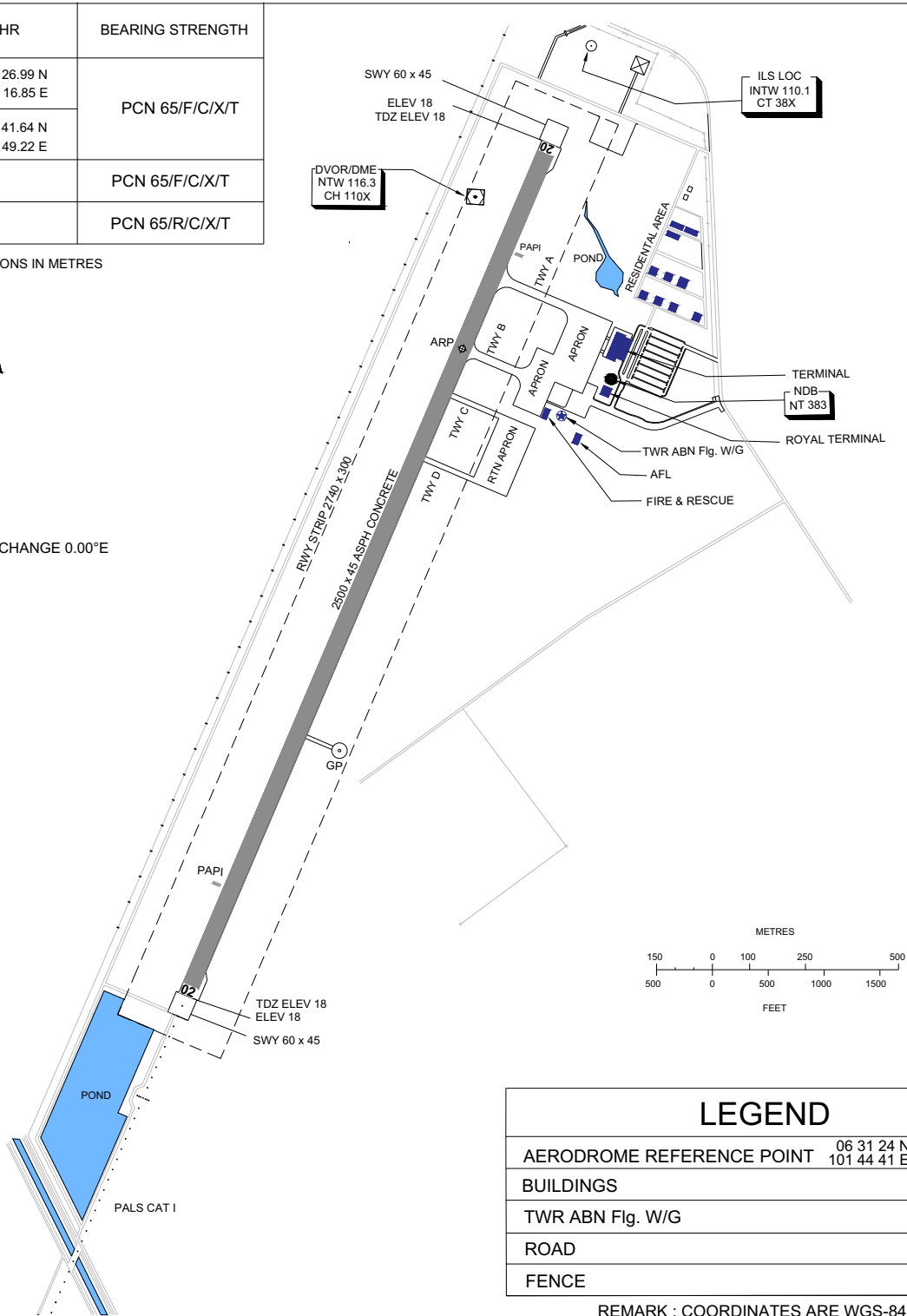
RWY	DIRECTION	THR	BEARING STRENGTH
02	20.35	06 30 26.99 N 101 44 16.85 E	PCN 65/F/C/X/T
20	202.35	06 31 41.64 N 101 44 49.22 E	
TAXIWAY A,B,C,D			PCN 65/F/C/X/T
APRON			PCN 65/R/C/X/T

ELEVATIONS IN FEET AND DIMENSIONS IN METRES
BEARINGS ARE MAGNETIC



ANNUAL RATE OF CHANGE 0.00°E

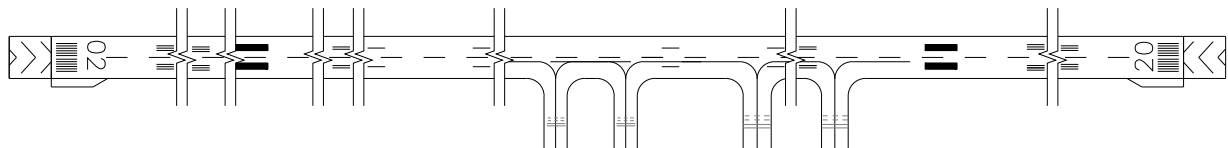
CHANGE : REVISED CHART. MAG VAR. ANNUAL RATE OF CHANGE. RWY DIMENSIONS. RWY STRIP DIMENSIONS. THR COORD. BEARING STRENGTH. TWR FREQ. PAPI.



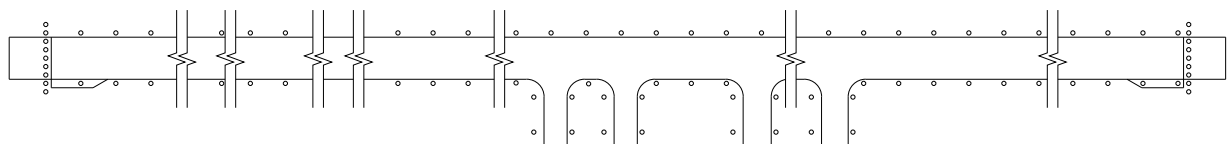
LEGEND	
AERODROME REFERENCE POINT	06 31 24 N 101 44 41 E
BUILDINGS	[Blue rectangle symbol]
TWR ABN Flg. W/G	[Star symbol]
ROAD	[Double line symbol]
FENCE	[Dashed line symbol]

REMARK : COORDINATES ARE WGS-84

MARKING AIDS RWY 02/20 AND EXIT TWY



LIGHTING AIDS RWY 02/20 AND EXIT TWY

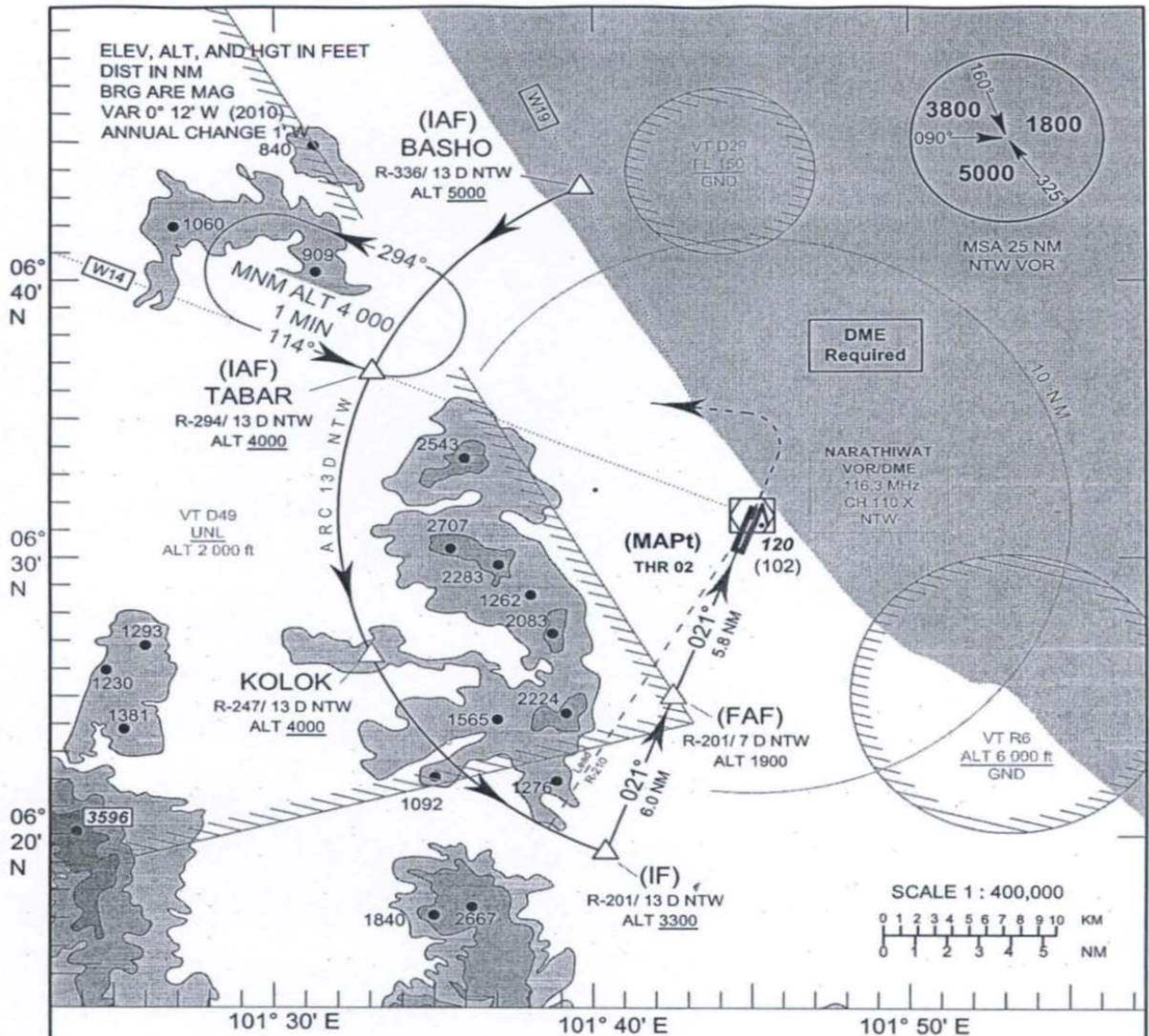


INTENTIONALLY BLANK

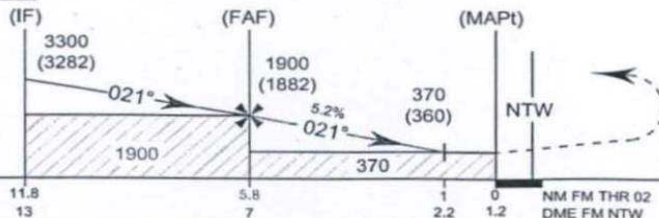
INSTRUMENT APPROACH CHART-ICAO
AERODROME ELEV 18 FT
HEIGHTS RELATED TO AERODROME ELEV

APP : 125.55, 284.00
TWR : 122.70

NARATHIWAT/ Narathiwat (VTSC)
VOR RWY 02



TA 11 000



Missed Approach :
No Turn Before MAPt.
Climb straight ahead to 2200 FT,
then turn left to intercept
R-294 and proceed to **TABAR**
at 4000 FT and hold or as
directed by ATC.

OCA/H	A	B	C	D	Distance (NTW)	ELEV 18 FT (THR RWY 02)						
						FAF	6 D	5 D	4 D	3 D	2.2 D	
Straight-in approach	370 (360)					1900 (1882)	1580 (1562)	1270 (1252)	950 (932)	640 (622)	370 (352)	
						Ground Speed (GS)	knot	100	120	140	160	180
Circling	730 (720)		830 (820)			Rate of descent (ft/min)	530	630	740	845	950	1055

24 JAN 2013

NARATHIWAT/ Narathiwat (VTSC)
VOR RWY 02

BASHO (IAF)	R - 336 13 D NTW	06 43 32.72 N 06 43.55 N	101 39 21.79 E 101 39.36 E
TABAR	R - 294 13 D NTW	06 36 52.29 N 06 36.87 N	101 32 45.01 E 101 32.75 E
KOLOK	R - 247 13 D NTW	06 26 37.00 N 06 26.62 N	101 32 39.60 E 101 32.66 E
IF	R - 201 13 D NTW	06 19 27.66 N 06 19.46 N	101 40 00.16 E 101 40.00 E
(FAF)	R - 201 7 D NTW	06 25 04.83 N 06 25.08 N	101 42 10.41 E 101 42.17 E

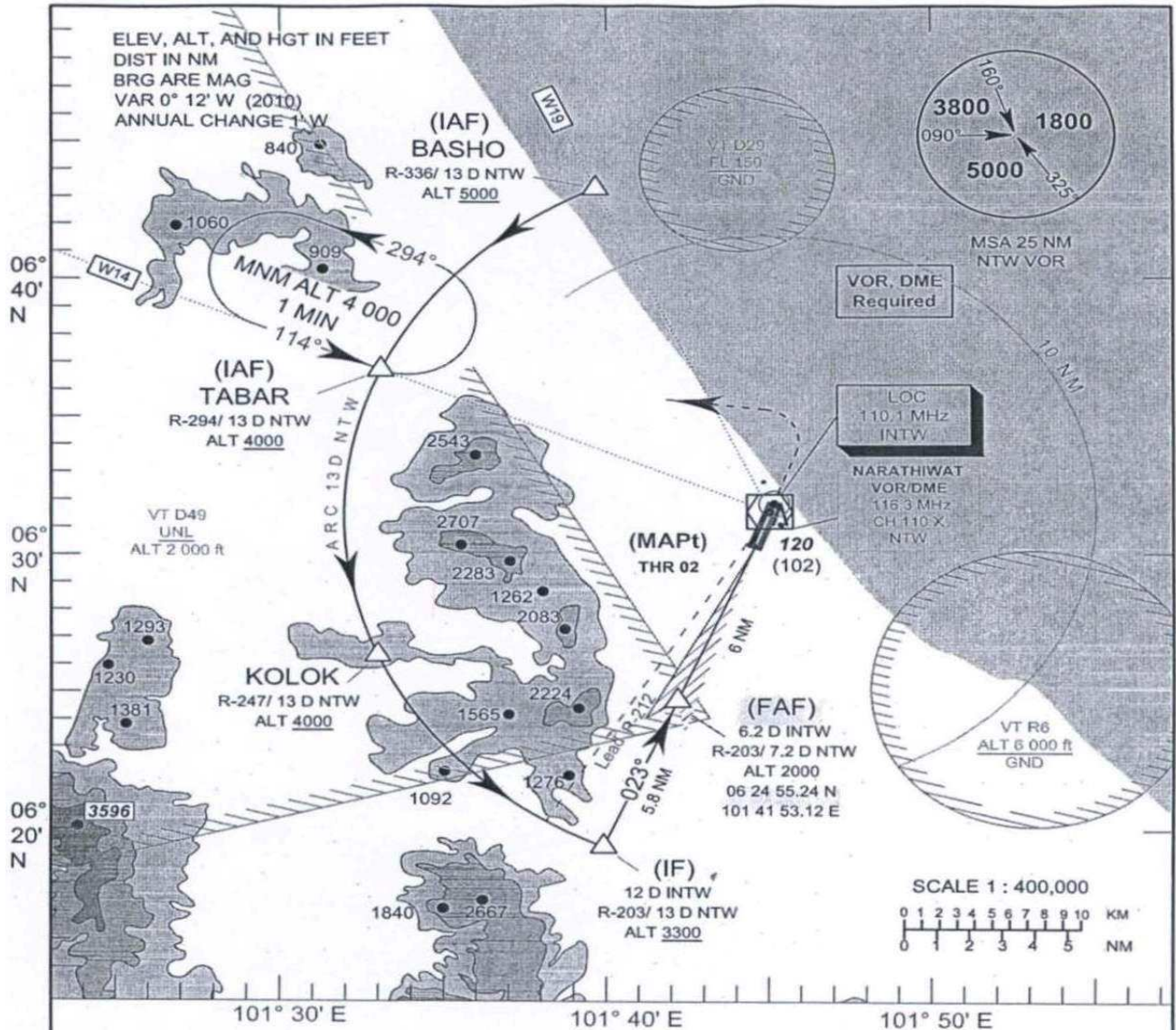
NARATHIWAT/ Narathiwat (VTSC)
VOR RWY 20

NORAR (IAF)	R - 294 13 D NTW	06 36 52.29 N 06 36.87 N	101 32 45.01 E 101 32.75 E
KIRIN	R - 336 13 D NTW	06 43 32.72 N 06 43.55 N	101 39 21.79 E 101 39.36 E
IF	R - 024 13 D NTW	06 43 34.10 N 06 43.57 N	101 49 59.90 E 101 50.00 E
(FAF)	R - 024 6.5 D NTW	06 37 36.16 N 06 37.60 N	101 47 21.14 E 101 47.35 E

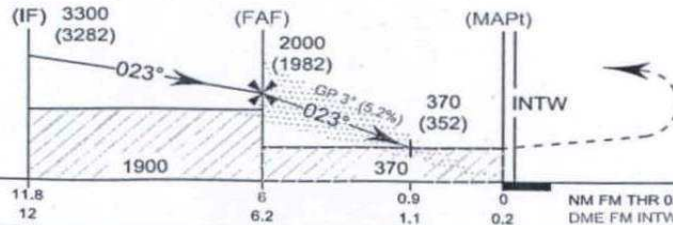
INSTRUMENT APPROACH CHART-ICAO
AERODROME ELEV 18 FT
HEIGHTS RELATED TO THRESHOLD ELEV

APP : 125.55, 284.00
TWR : 122.70

NARATHIWAT/ Narathiwat (VTSC)
ILS or LOC RWY 02



TA 11 000



OCA/H	A	B	C	D	Distance (INTW)	FAF	5 D	4 D	3 D	2 D	1.1 D	
Straight-in approach CAT I	270 (252)				Altitude	2000 (1982)	1590 (1572)	1280 (1262)	960 (942)	650 (632)	370 (352)	
	370 (360)				Ground Speed (GS)	knot	100	120	140	160	180	200
LOC Only	370 (360)				Rate of descent	(ft/min)	530	630	740	845	950	1055
Circling	730 (720)	830 (820)										

24 JAN 2013

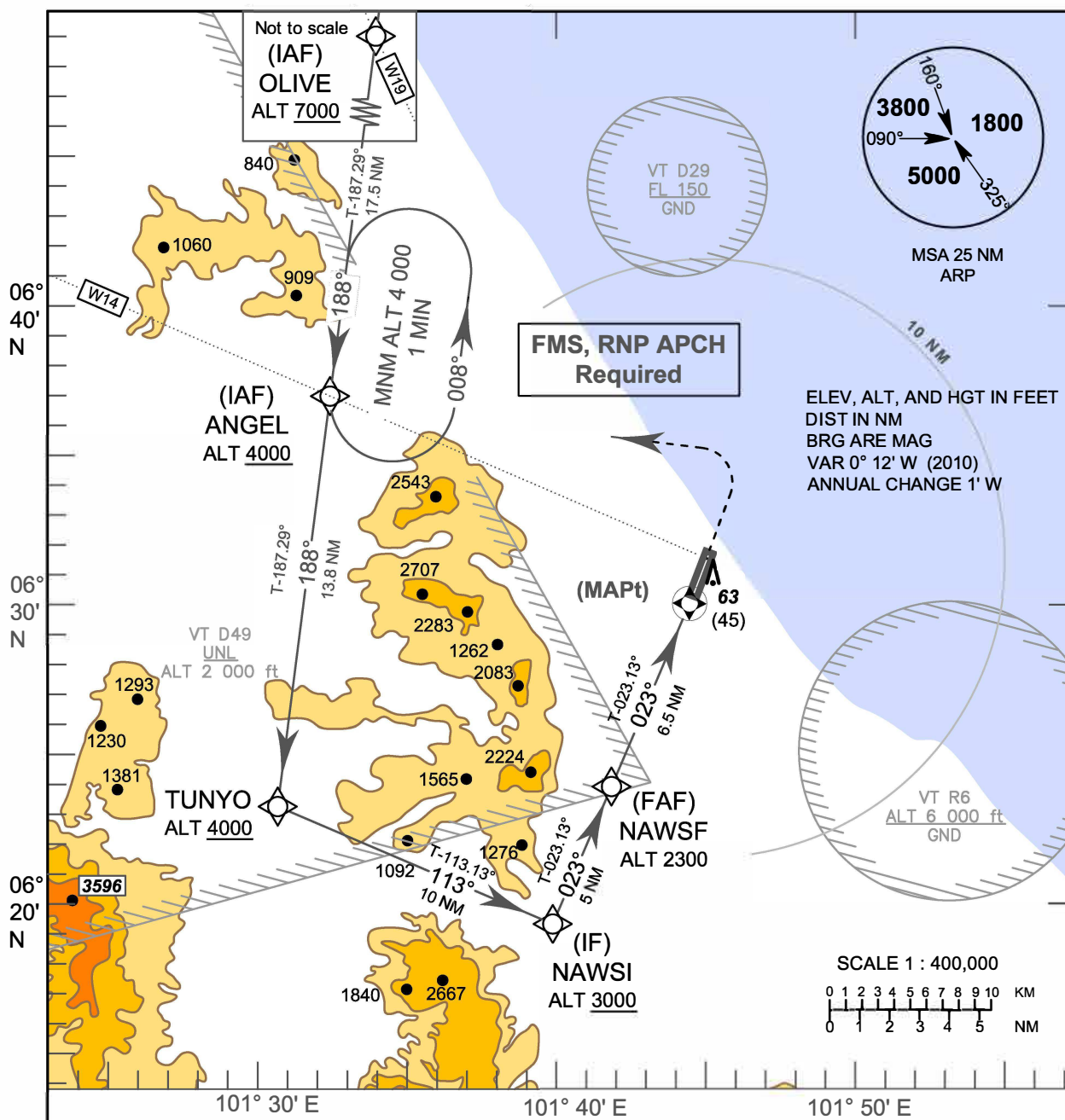
NARATHIWAT/ Narathiwat (VTSC)
ILS RWY 02

BASHO (IAF)	R - 336 13 D NTW	06 43 32.72 N 06 43.55 N	101 39 21.79 E 101 39.36 E
TABAR	R - 294 13 D NTW	06 36 52.29 N 06 36.87 N	101 32 45.01 E 101 32.75 E
KOLOK	R - 247 13 D NTW	06 26 37.00 N 06 26.62 N	101 32 39.60 E 101 32.66 E
IF	R - 203 13 D NTW	06 19 37.65 N 06 19.63 N	101 39 35.56 E 101 39.59 E
(FAF)	R - 203 7.2 D NTW	06 24 55.24 N 06 24.92 N	101 41 53.12 E 101 41.89 E

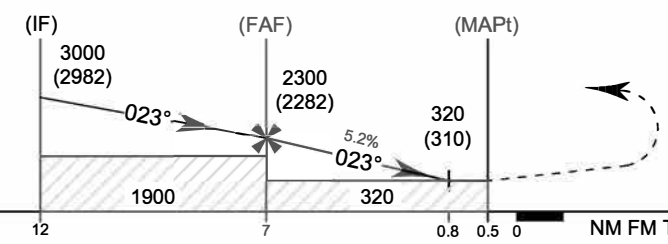
INSTRUMENT APPROACH CHART-ICAO
AERODROME ELEV 18 FT
HEIGHTS RELATED TO AERODROME ELEV

APP : 125.55, 284.00
TWR : 122.70

NARATHIWAT/ Narathiwat (VTSC)
RNP RWY 02



TA 11 000



Missed Approach :
No Turn Before MAPt.
Climb on track 023° to 2200 FT,
then turn left direct to **ANGEL**
at 4000 FT and hold or as
directed by ATC.

OCA/H	A	B	C	D	Distance (THR 02)	FAF	6 NM	5 NM	4 NM	3 NM	2 NM	0.8 NM
	LNAV	320 (310)					2300 (2282)	1970 (1952)	1650 (1632)	1330 (1312)	1020 (1002)	700 (682)
						knot	100	120	140	160	180	200
Circling	730 (720)		830 (820)		Rate of descent	(ft/min)	530	630	740	845	950	1055

CHANGE : CHART TITLE

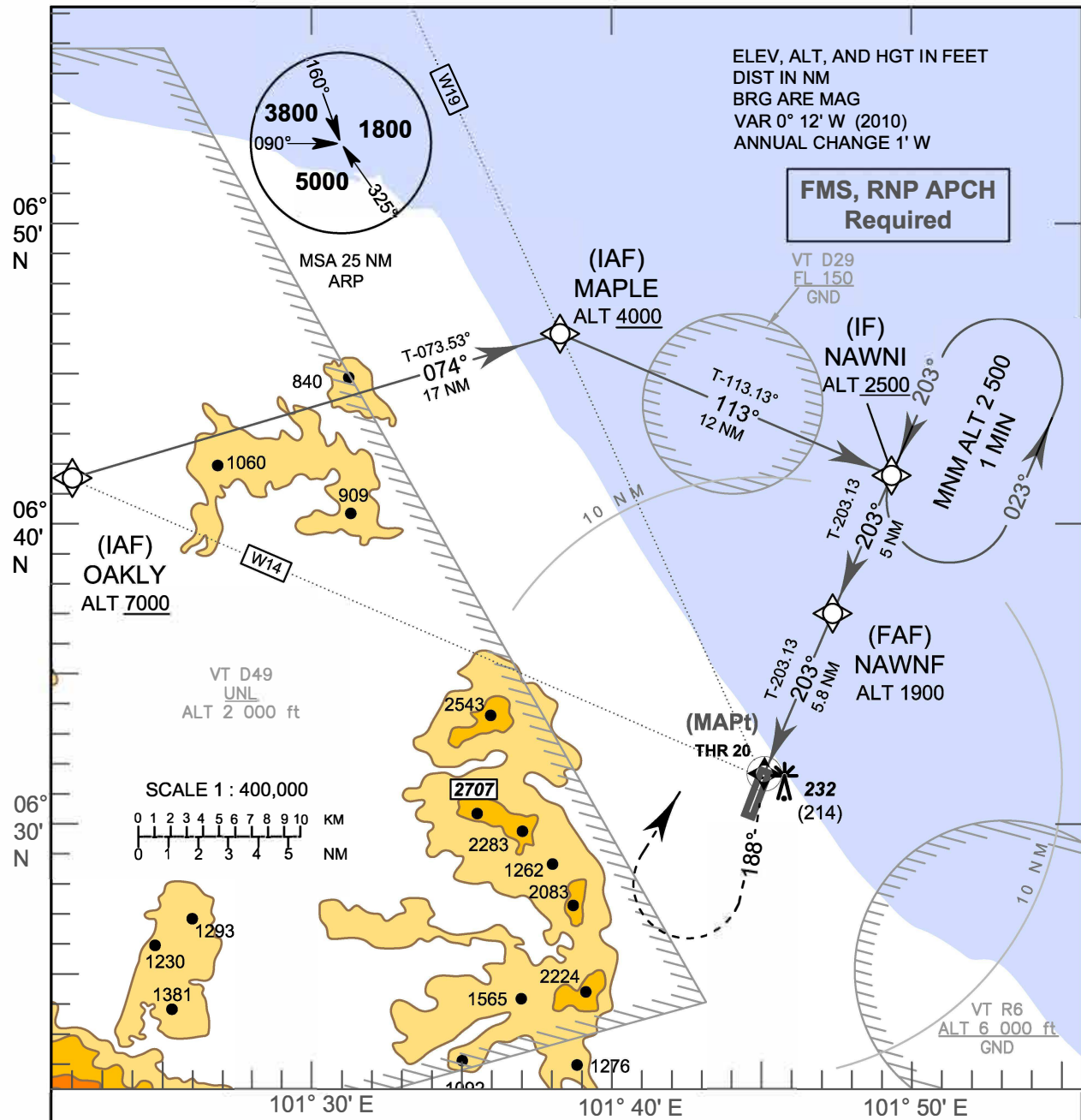
RNP RWY 02

Fix Identifier (Waypoint name)	WGS-84 Coordinates		Path descriptor	Flyover	Course °M(°T)	Turn direction	Altitude	Speed limit	Magnetic variation	Navigation performance
	Latitude	Longitude								
OLIVE	06 54 32.33N	101 34 25.63E	IF	-	188°(187.29°)	R	+7000	-	0°14'	RNP1
ANGEL	06 37 09.09N	101 32 06.62E	IF, TF	-	188°(187.29°)	R, -	+4000	-	0°14'	RNP1
TUNYO	06 23 23.01N	101 30 16.82E	TF	-	113°(113.13°)	R	+4000	-	0°14'	RNP1
IF	06 19 23.55N	101 39 29.45E	TF	-	023°(023.13°)	L	+3000	-	0°14'	RNP1
FAF	06 23 59.96N	101 41 29.17E	TF	-	023°(023.13°)	-	2300	-	0°14'	RNP0.3
MAPt	06 29 59.25N	101 44 04.87E	TF	Y	023°(023.13°)	-	320	-	0°14'	RNP0.3
			CA	-			2200		0°14'	RNP1
ANGEL	06 37 09.09N	101 32 06.62E	DF	-		L	4000	-	0°14'	RNP1
ANGEL	06 37 09.09N	101 32 06.62E	HM	-	188°(187.29°)	L	4000	-	0°14'	RNP1

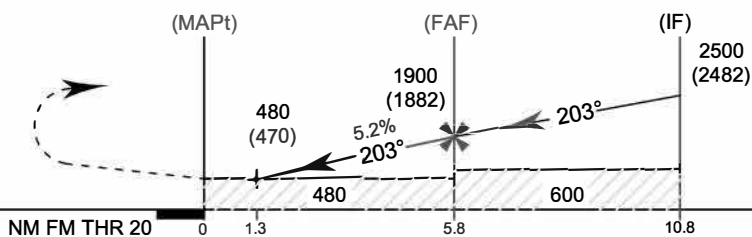
INSTRUMENT APPROACH CHART-ICAO
AERODROME ELEV 18 FT
HEIGHTS RELATED TO AERODROME ELEV

APP : 125.55, 284.00
TWR : 122.70

NARATHIWAT/ Narathiwat (VTSC)
RNP RWY 20



Missed Approach :
No Turn Before MAPt.
At MAPt, turn left to track 188° and climb to 2200 FT, then turn right direct to IF at 2500 FT and hold or as directed by ATC.



CHANGE: CHART TITLE.

OCA/H	A	B	C	D	Distance (THR 20)	1.3 NM	2 NM	3 NM	4 NM	5 NM	FAF	
LNAV	480 (470)				Altitude	480 (462)	700 (682)	1020 (1002)	1330 (1312)	1650 (1632)	1900 (1882)	
					Ground Speed (GS)	knot	100	120	140	160	180	200
Circling	730 (720)	830 (820)			Rate of descent	(ft/min)	530	630	740	845	950	1055

RNP RWY 20

Fix Identifier (Waypoint name)	WGS-84 Coordinates		Path descriptor	Flyover	Course °M(°T)	Turn direction	Altitude	Speed limit	Magnetic variation	Navigation performance
	Latitude	Longitude								
OAKLY	06 41 42.08N	101 21 42.44E	IF	-	074°(073.53°)	L	+7000	-	0°14'	RNP1
MAPLE	06 46 26.62N	101 38 03.72E	IF, TF	-	113°(113.13°)	R, L	+4000	-	0°14'	RNP1
IF	06 41 38.46N	101 49 08.19E	TF	-	203°(203.13°)	R	+2500	-	0°14'	RNP1
FAF	06 37 02.15N	101 47 08.28E	TF	-	203°(203.13°)	-	1900	-	0°14'	RNP0.3
MAPt (THR20)	06 31 41.60N	101 44 49.25E	-	Y	188°(188.13°)	L	480	-	0°14'	RNP0.3
			CA	-			2200	-	0°14'	RNP1
IF	06 41 38.46N	101 49 08.19E	DF	-		L	2500	-	0°14'	RNP1
IF	06 41 38.46N	101 49 08.19E	HM	-	203°(203.13°)	L	2500	-	0°14'	RNP1