

STANDARD DEPARTURE CHART - INSTRUMENT (SID) - ICAO

APP : 120.05
 TWR : 122.5, 236.60
 GND : 121.90
 ATIS : 132.40

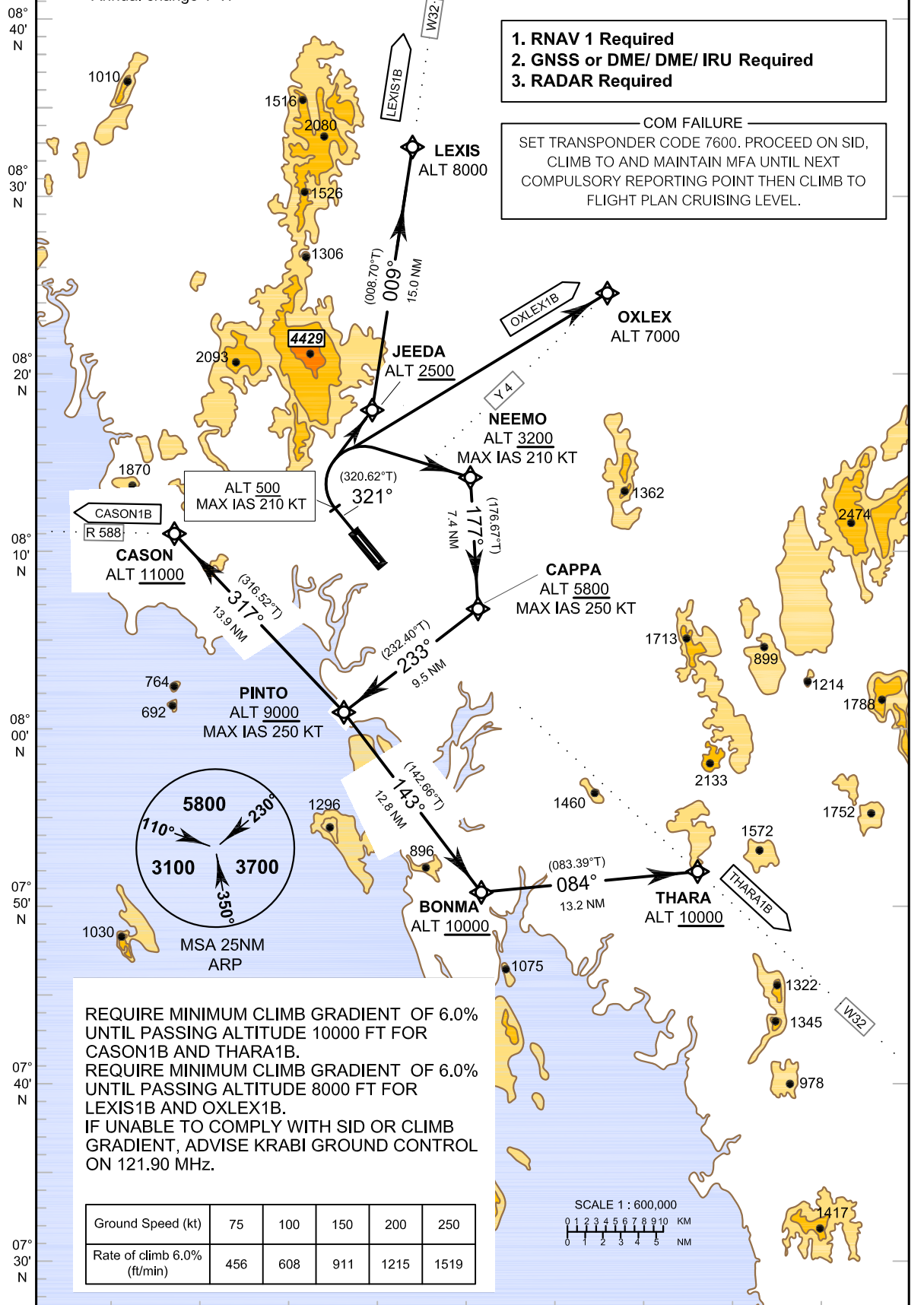
KRABI /Krabi (VTSG)
RNAV RWY 32
CASON1B LEXIS1B
OXLEX1B THARA1B

ELEV, ALT, AND HGT IN FEET
 DIST IN NM
 BRG ARE MAG
 VAR 0° 32' W (2010)
 Annual change 1' W

TRANSITION ALTITUDE
 11000

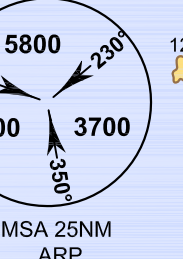
1. RNAV 1 Required
2. GNSS or DME/ DME/ IRU Required
3. RADAR Required

COM FAILURE
 SET TRANSPONDER CODE 7600. PROCEED ON SID, CLIMB TO AND MAINTAIN MFA UNTIL NEXT COMPULSORY REPORTING POINT THEN CLIMB TO FLIGHT PLAN CRUISING LEVEL.



ALT 500
 MAX IAS 210 KT

PINTO
 ALT 9000
 MAX IAS 250 KT



REQUIRE MINIMUM CLIMB GRADIENT OF 6.0% UNTIL PASSING ALTITUDE 10000 FT FOR CASON1B AND THARA1B.
 REQUIRE MINIMUM CLIMB GRADIENT OF 6.0% UNTIL PASSING ALTITUDE 8000 FT FOR LEXIS1B AND OXLEX1B.
 IF UNABLE TO COMPLY WITH SID OR CLIMB GRADIENT, ADVISE KRABI GROUND CONTROL ON 121.90 MHz.

Ground Speed (kt)	75	100	150	200	250
Rate of climb 6.0% (ft/min)	456	608	911	1215	1519

