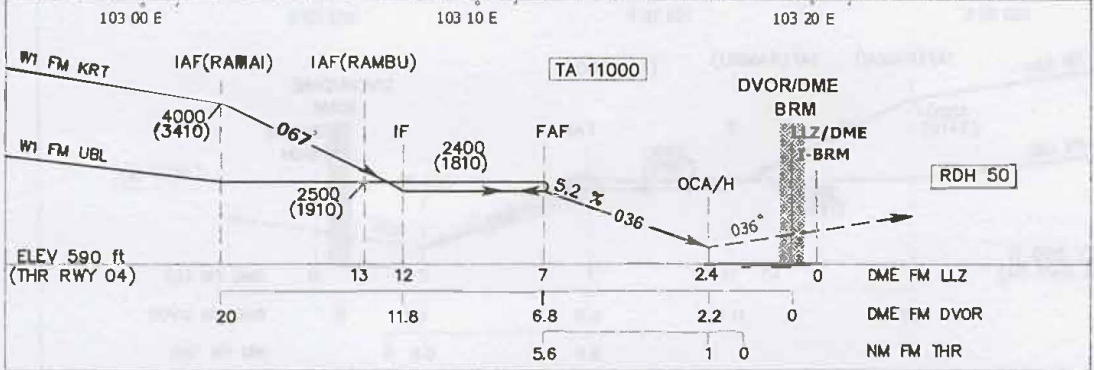
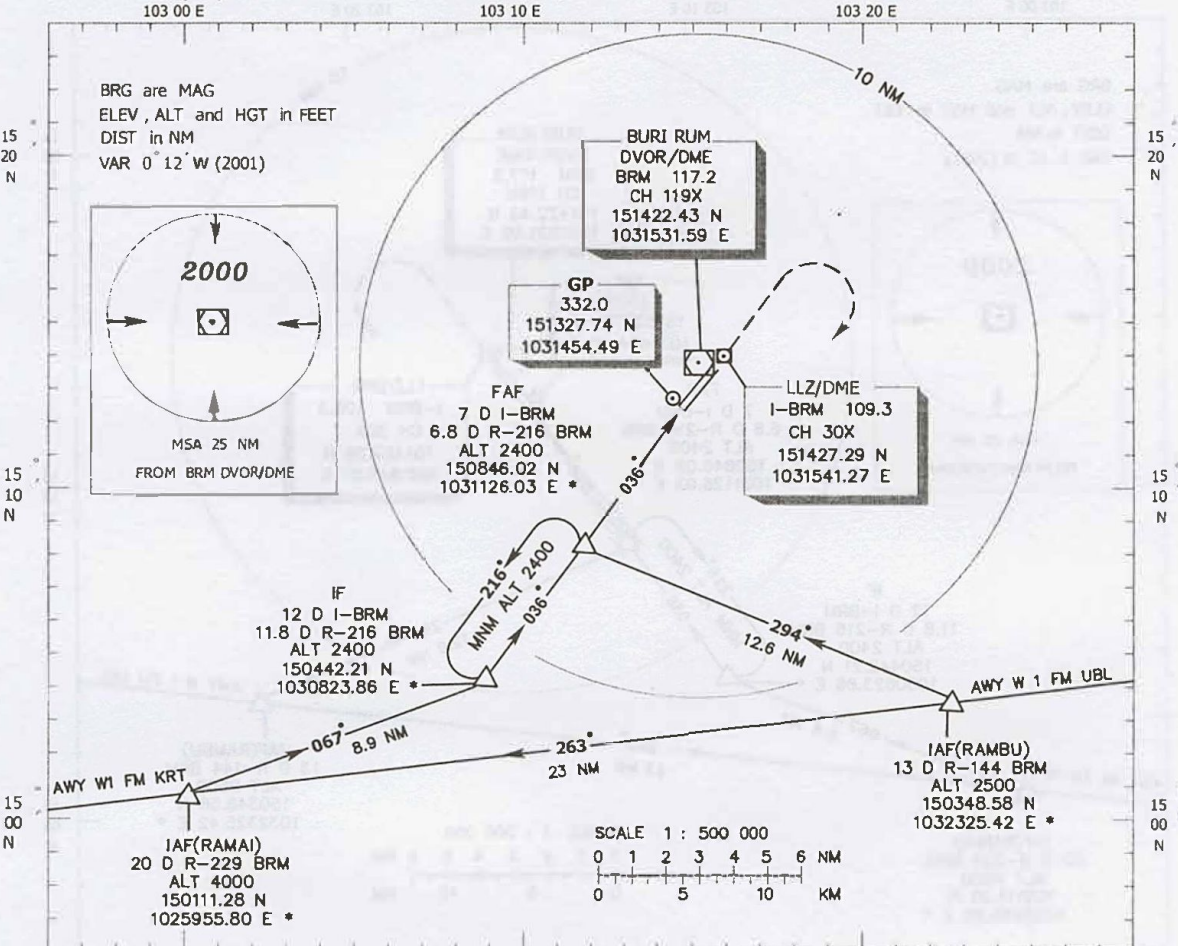


**INSTRUMENT**  
**APPROACH**  
**CHART - ICAO**

**AERODROME ELEV 590 ft**  
**HEIGHTS RELATED TO**  
**AERODROME ELEV**

APP : 123.6  
 TWR : 119.9, 236.6

**BURI RUM / Buri Rum**  
**LLZ/DME**  
**RWY 04**



**MISSED APPROACH** : Climb on track 036° to 1600(1010) ft ,then turn right continuing climb to 2400(1810) ft and hold.

OCA/H		Distance (I-BRM)				Altitude (Height)	3 D	4 D	5 D	6 D		
		A	B	C	D							
Straight - in approach	LLZ/DME	950 (360)				Ground speed (GS)	knot	100	120	140	160	180
						FAF-MAPt 4.6	m:s	2:46	2:18	1:58	1:44	1:32
Circling		1100(510)		1300(710)		Rate of descent	ft/min	525	630	735	840	950