

**STANDARD DEPARTURE CHART-
INSTRUMENT (SID) - ICAO**

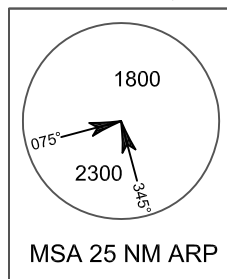
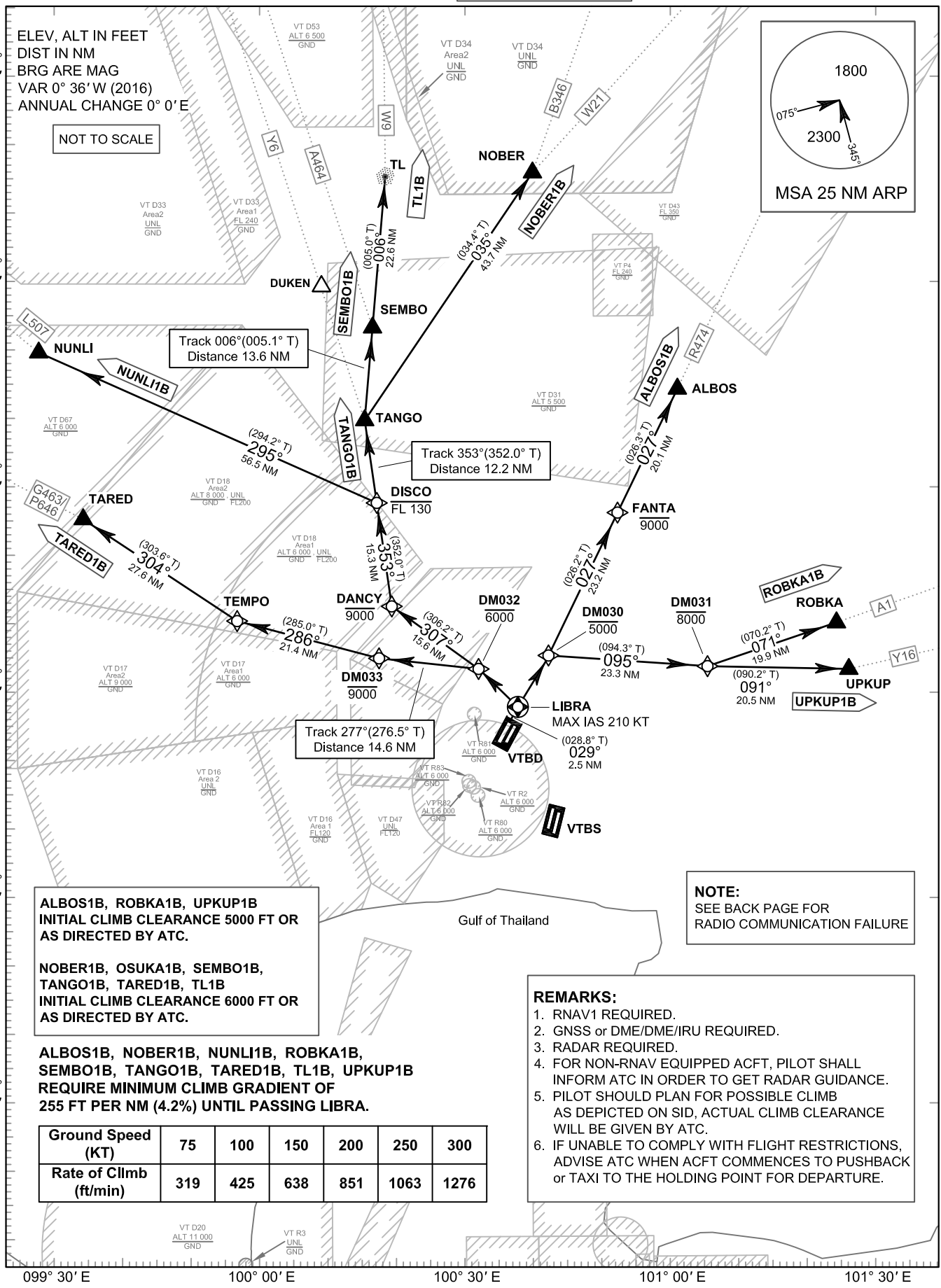
TRANSITION ALTITUDE
11000 FT

SPEED RESTRICTION
MAX IAS 250 KT AT OR
BELOW ALT 10000 FT
UNLESS OTHERWISE
AUTHORIZED BY ATC.

APP : 119.1, 262.5
: 119.4, 262.5
: 120.3, 262.5
: 121.7, 262.5
: 122.35, 262.5
: 124.35, 262.5
: 125.2, 262.5
DAR : 125.5, 262.5
TWR : 118.1, 236.6
ATIS : 126.4, 344.6

**BANGKOK/Don Mueang Intl (VTBD)
RNAV RWY03L**

ALBOS1B NOBER1B NUNLI1B
ROBKA1B SEMBO1B TANGO1B
TARED1B TL1B UPKUP1B



ALBOS1B, ROBKA1B, UPKUP1B
INITIAL CLIMB CLEARANCE 5000 FT OR
AS DIRECTED BY ATC.

**NOBER1B, OSUKA1B, SEMBO1B,
TANGO1B, TARED1B, TL1B**
INITIAL CLIMB CLEARANCE 6000 FT OR
AS DIRECTED BY ATC.

**ALBOS1B, NOBER1B, NUNLI1B, ROBKA1B,
SEMBO1B, TANGO1B, TARED1B, TL1B, UPKUP1B**
REQUIRE MINIMUM CLIMB GRADIENT OF
255 FT PER NM (4.2%) UNTIL PASSING LIBRA.

Ground Speed (KT)	75	100	150	200	250	300
Rate of Climb (ft/min)	319	425	638	851	1063	1276

- REMARKS:**
1. RNAV1 REQUIRED.
 2. GNSS or DME/DME/IRU REQUIRED.
 3. RADAR REQUIRED.
 4. FOR NON-RNAV EQUIPPED ACFT, PILOT SHALL INFORM ATC IN ORDER TO GET RADAR GUIDANCE.
 5. PILOT SHOULD PLAN FOR POSSIBLE CLIMB AS DEPICTED ON SID, ACTUAL CLIMB CLEARANCE WILL BE GIVEN BY ATC.
 6. IF UNABLE TO COMPLY WITH FLIGHT RESTRICTIONS, ADVISE ATC WHEN ACFT COMMENCES TO PUSHBACK or TAXI TO THE HOLDING POINT FOR DEPARTURE.

NOTE:
SEE BACK PAGE FOR
RADIO COMMUNICATION FAILURE

CHANGE: VT R82 AND VT R83 ADDED.
MAG TRACK DER RWY03L TO LIBRA.
TRUE TRACK AND DISTANCE FROM SEMBO TO TL.

ELEV, ALT IN FEET
DIST IN NM
BRG ARE MAG
VAR 0° 36' W (2016)
ANNUAL CHANGE 0° 0' E

NOT TO SCALE

15° 30' N
15° 00' N
14° 30' N
14° 00' N
13° 30' N
13° 00' N

099° 30' E 100° 00' E 100° 30' E 101° 00' E 101° 30' E