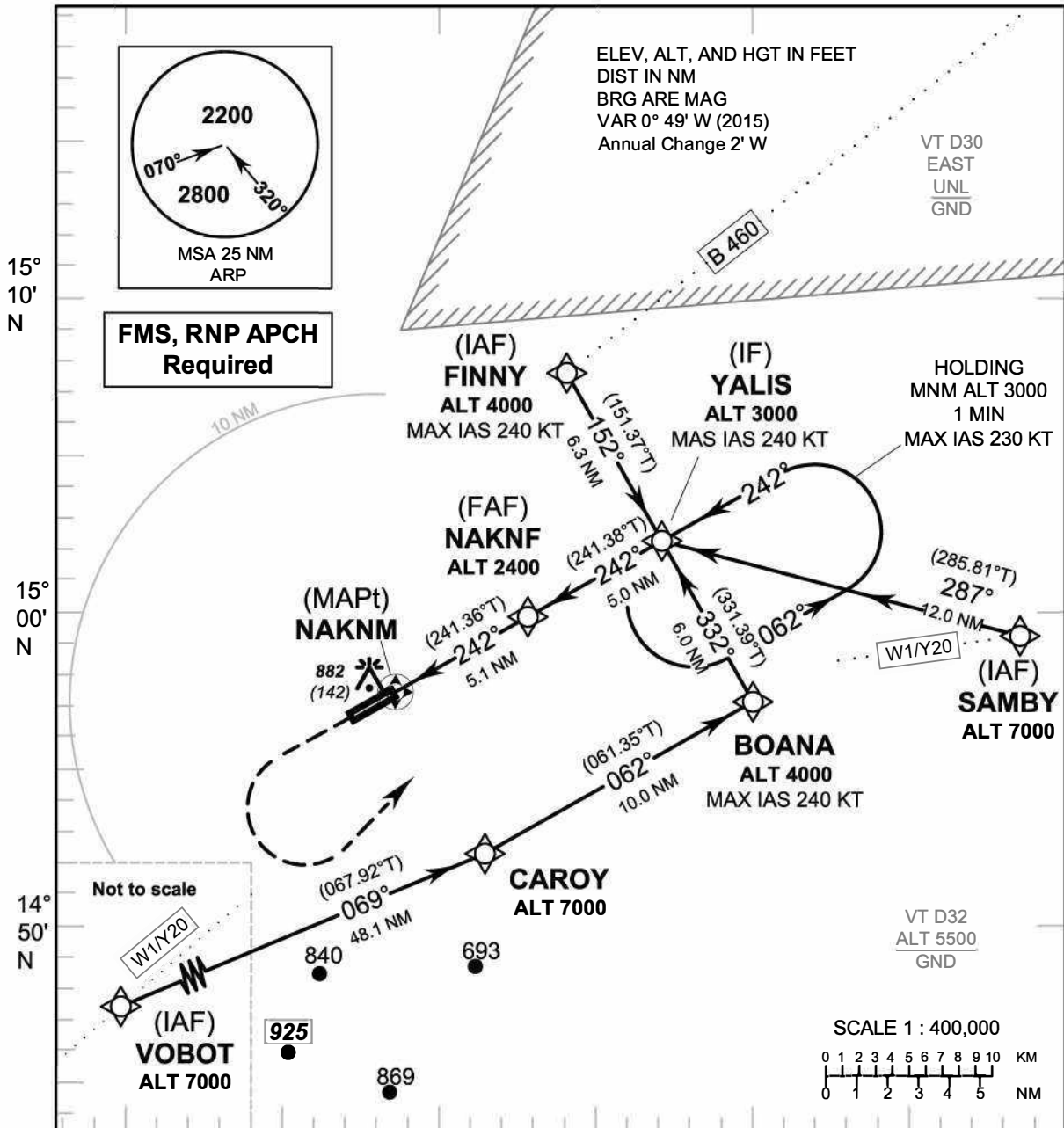


INSTRUMENT AERODROME ELEV 765 FT
APPROACH HEIGHTS RELATED TO
CHART-ICAO THR RWY24 - ELEV 740 FT

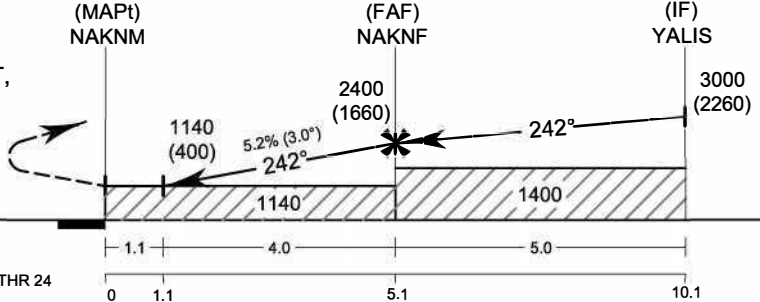
APP : 123.6
 TWR : 119.8, 236.6
 ATIS : 126.6

NAKHON RATCHASIMA/
Nakhon Ratchasima (VTUQ)
RNP RWY24



102° 10' E 102° 20' E 102° 30' E TA 11000

Missed Approach :
No turn before MAPt.
 Climb on track 242° to 2000 FT,
 then turn left direct to **YALIS**
 at 3000 FT and hold or as
 directed by ATC.



CHANGE : ROUTE Y20 ADDED.

OCA/H	A	B	C	D	NM to THR24	1.1 NM	2 NM	3 NM	4 NM	5 NM	FAF	
LNAV	1140 (400)				Altitude (Height)	1140 (400)	1420 (680)	1735 (995)	2055 (1315)	2370 (1630)	2400 (1660)	
					Ground Speed	knot	70	90	100	120	140	160
Circling (OCH AAL)	1300 (535)		1500 (735)		Rate of descent (5.2%)	(ft/min)	369	474	527	632	737	843