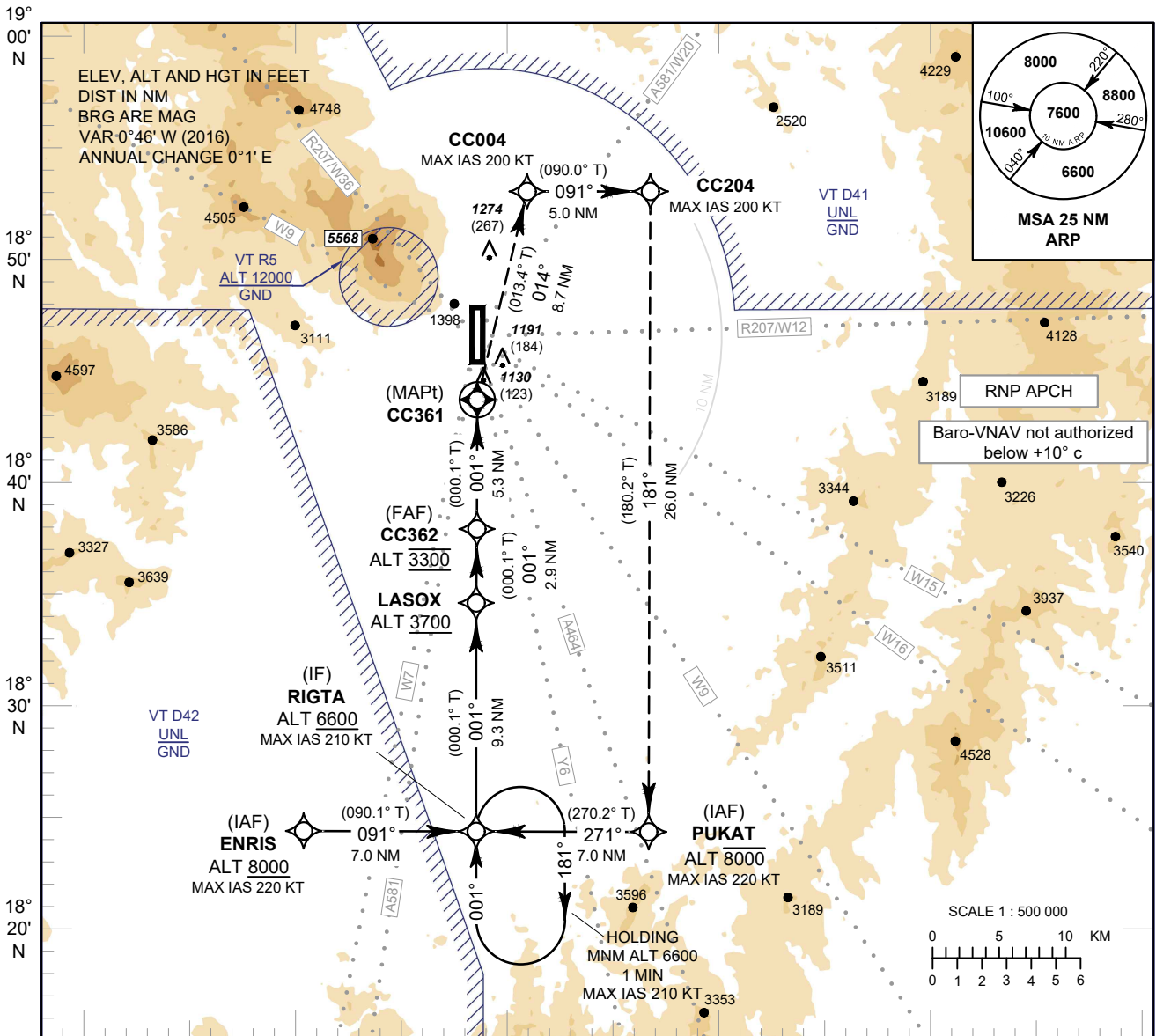


INSTRUMENT APPROACH CHART - ICAO **AERODROME ELEV 1036 FT**
HEIGHTS RELATED TO THR RWY36 - ELEV 1007 FT

APP : 129.6 , 305.4
 TWR : 118.1 , 236.6
 GND : 121.9 , 275.8
 ATIS : 127.2 , 301.5

CHIANG MAI / Chiang Mai Intl (VTCC)

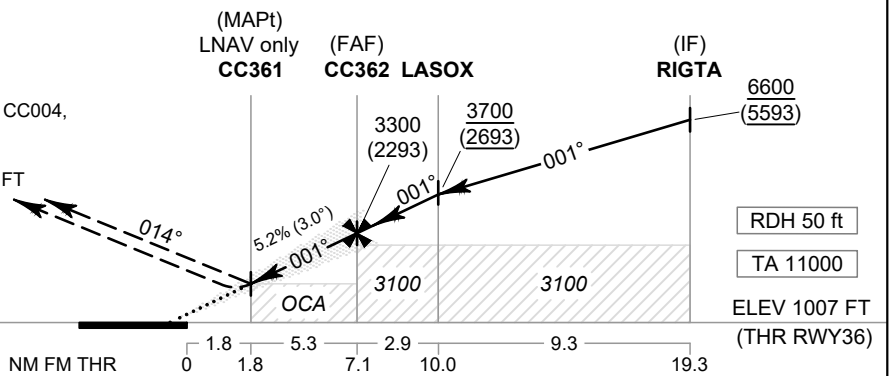
RNP RWY36



MISSED APPROACH :

No turn before MAPt.
Speed restricted to MAX IAS 200 KT until after turn.

At MAPt, turn right Climb on track 014° to CC004, then turn right to CC204, continue to PUKAT, then proceed to RIGTA at minimum 6600 FT and hold or as directed by ATC.



OCA/H	A	B	C	D	NM to NEXT WPT	1.8 NM	2 NM	3 NM	4 NM	5 NM	6 NM	FAF
LNAV / VNAV	1500 (493)				Altitude (Height)	1630 (623)	1690 (683)	2005 (998)	2320 (1313)	2635 (1628)	2955 (1948)	3300 (2293)
LNAV	1630 (623)				Ground Speed	knot	70	90	100	120	140	160
Circling* (OCH AAL)	2030 (994)	2220 (1184)	2420 (1384)		Rate of Descent FAF-MAPt 5.2%	ft/min	369	474	527	632	737	843

* FOR CIRCLING RESTRICTION SEE VERSO

CHANGE: REVISED CHART.