

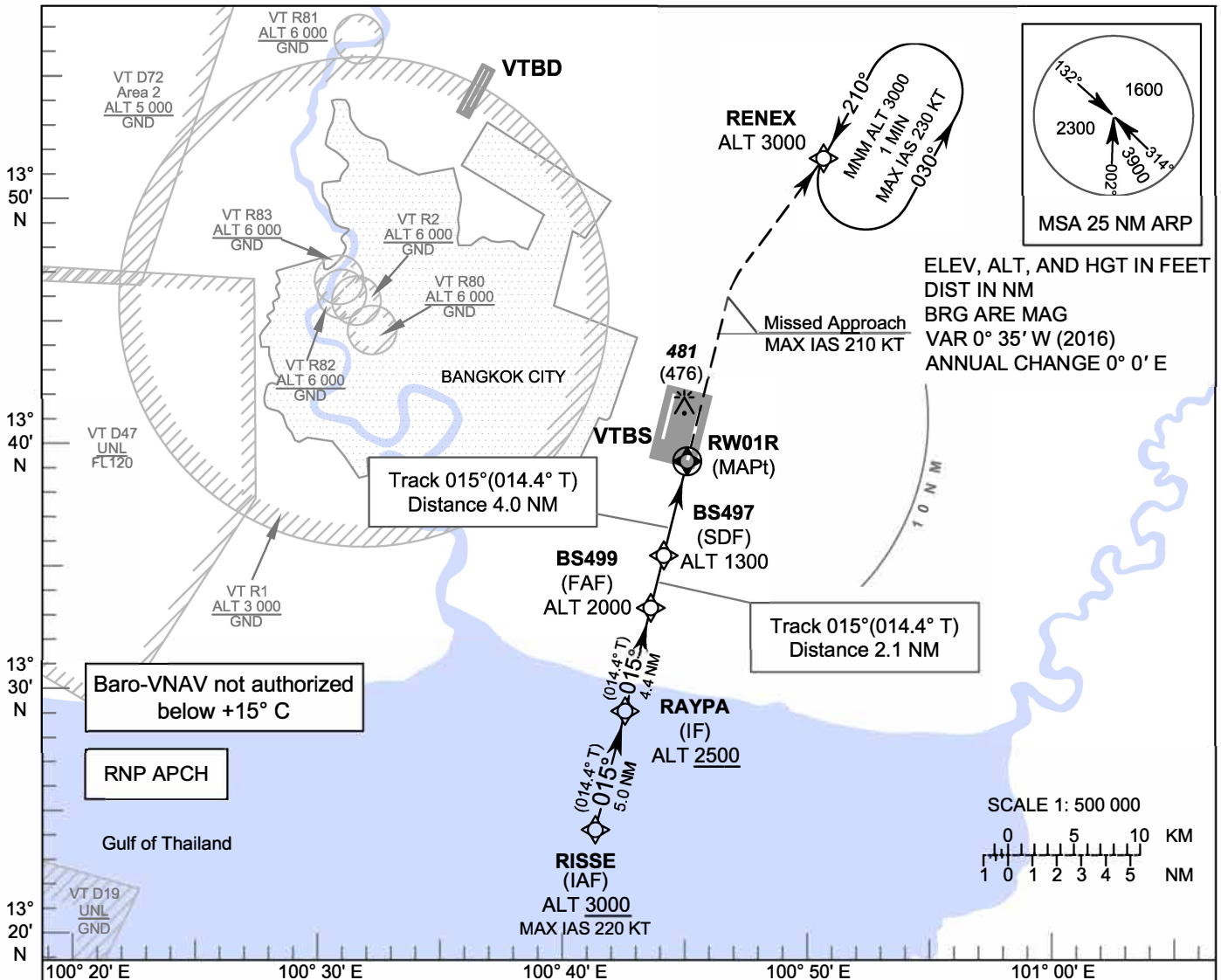
**INSTRUMENT
APPROACH
CHART - ICAO**

**AERODROME ELEV 5 FT
HEIGHTS RELATED TO
THR RWY01R - ELEV 5 FT**

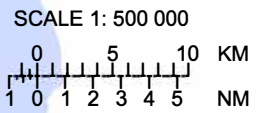
APP	: 119.1, 262.5
	: 120.3, 262.5
	: 128.95, 262.5
	: 122.35, 262.5
	: 124.35, 262.5
	: 125.2, 262.5
ARR	: 121.1
	: 126.3
TWR	: 118.2, 274.5
	: 119.0
ARR ATIS	: 133.6, 278.6

BANGKOK / Suvarnabhumi Intl (VTBS)

RNP RWY01R

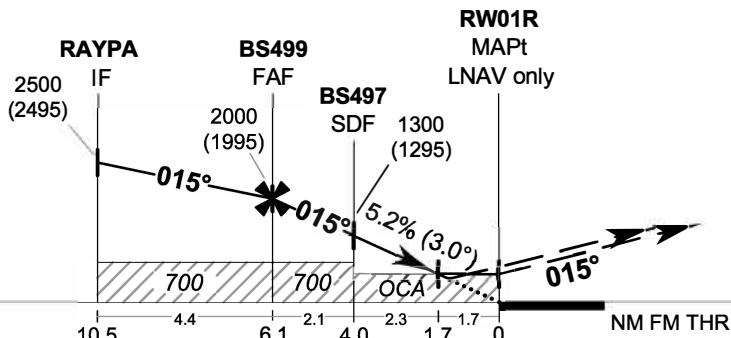


ELEV, ALT, AND HGT IN FEET
DIST IN NM
BRG ARE MAG
VAR 0° 35' W (2016)
ANNUAL CHANGE 0° 0' E



Baro-VNAV not authorized
below +15° C

RNP APCH



MISSED APPROACH:
No turn before MAPt.
Speed restricted to
MAX IAS 210 KT until after turn.
Climb to 1500 FT on track 015°,
then climbing right turn direct to
RENEX at 3000 FT and hold or as
directed by ATC.
(If unable to reach 3000 FT
at RENEX, continue climb
in the holding pattern.)

RDH 50 FT
TA 11000
ELEV 5 FT
(THR RWY01R)

OCA/H	A	B	C	D	NM to NEXT WPT	FAF	6 NM	5 NM	4 NM	3 NM	2 NM	1.7 NM
LNAV / VNAV	540 (535)				Altitude (Height)	2000 (1995)	1950 (1945)	1635 (1630)	1320 (1315)	1005 (1000)	690 (685)	600 (595)
LNAV	600 (595)				Ground speed	knot	70	90	100	120	140	160
Circling (OCH AAL)	800 (795)		900 (895)		Rate of descent FAF-MAPt 5.2%	ft/min	369	474	527	632	737	843

CHANGE: CHART TITLE.