

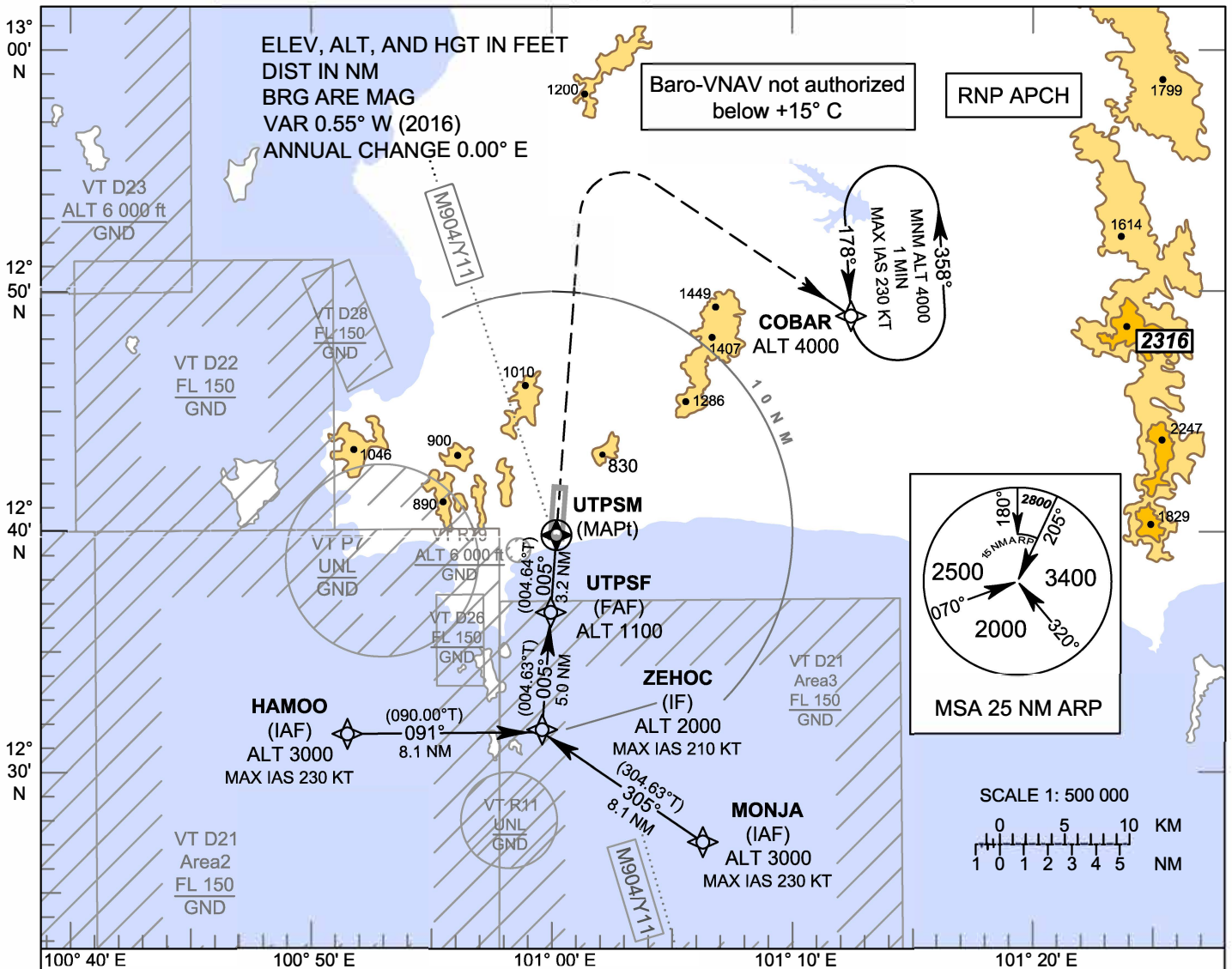
**INSTRUMENT
APPROACH
CHART - ICAO**

AERODROME ELEV 59 FT
HEIGHTS RELATED TO
THR RWY36 - ELEV 24 FT

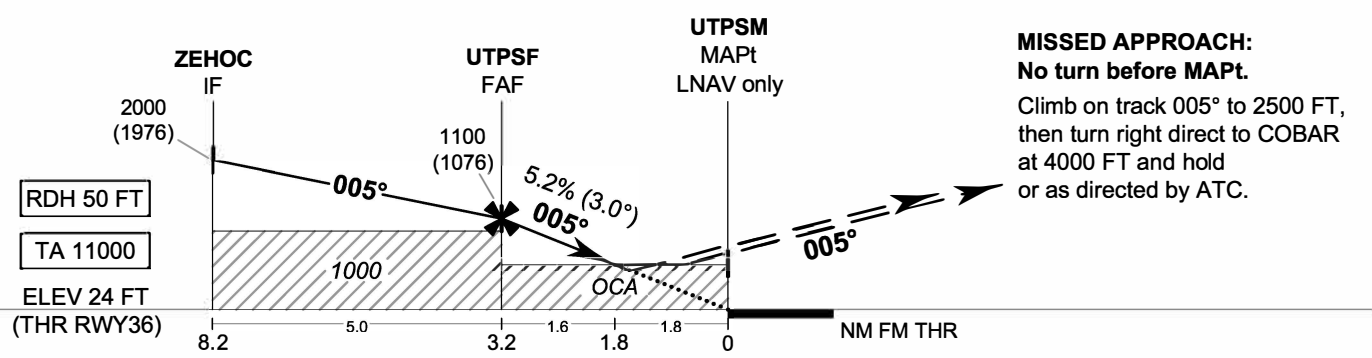
APP : 119.7 , 134.5
: 238.3 , 273.3
TWR : 118.1 , 118.3
: 227.0
GND : 121.9 , 275.8

**RAYONG / U-TAPAO RAYONG
PATTAYA INTL (VTBU)**

RNP RWY36



CAUTION: Aircraft shall avoid entering VT R11



MISSED APPROACH:
No turn before MAPt.

Climb on track 005° to 2500 FT,
then turn right direct to COBAR
at 4000 FT and hold
or as directed by ATC.

OCA/H	A	B	C	D	NM to NEXT WPT	FAF	3 NM	2 NM	1.5 NM			
LNAV / VNAV	480 (456)				Altitude (Height)	1100 (1076)	1020 (996)	705 (681)	560 (536)			
LNAV	640 (616)				Ground speed	knot	70	90	100	120	140	160
Circling (OCH AAL)	1200 (1141)	1450 (1391)		Rate of descent FAF-MAPt 5.2%		(ft/min)	369	474	527	632	737	843

CHANGE: CHART TITLE.