

**STANDARD DEPARTURE CHART -  
INSTRUMENT (SID) - ICAO**

TRANSITION ALTITUDE  
11000 FT

APP : 125.4  
TWR : 119.75 , 236.6  
ATIS : 128.275

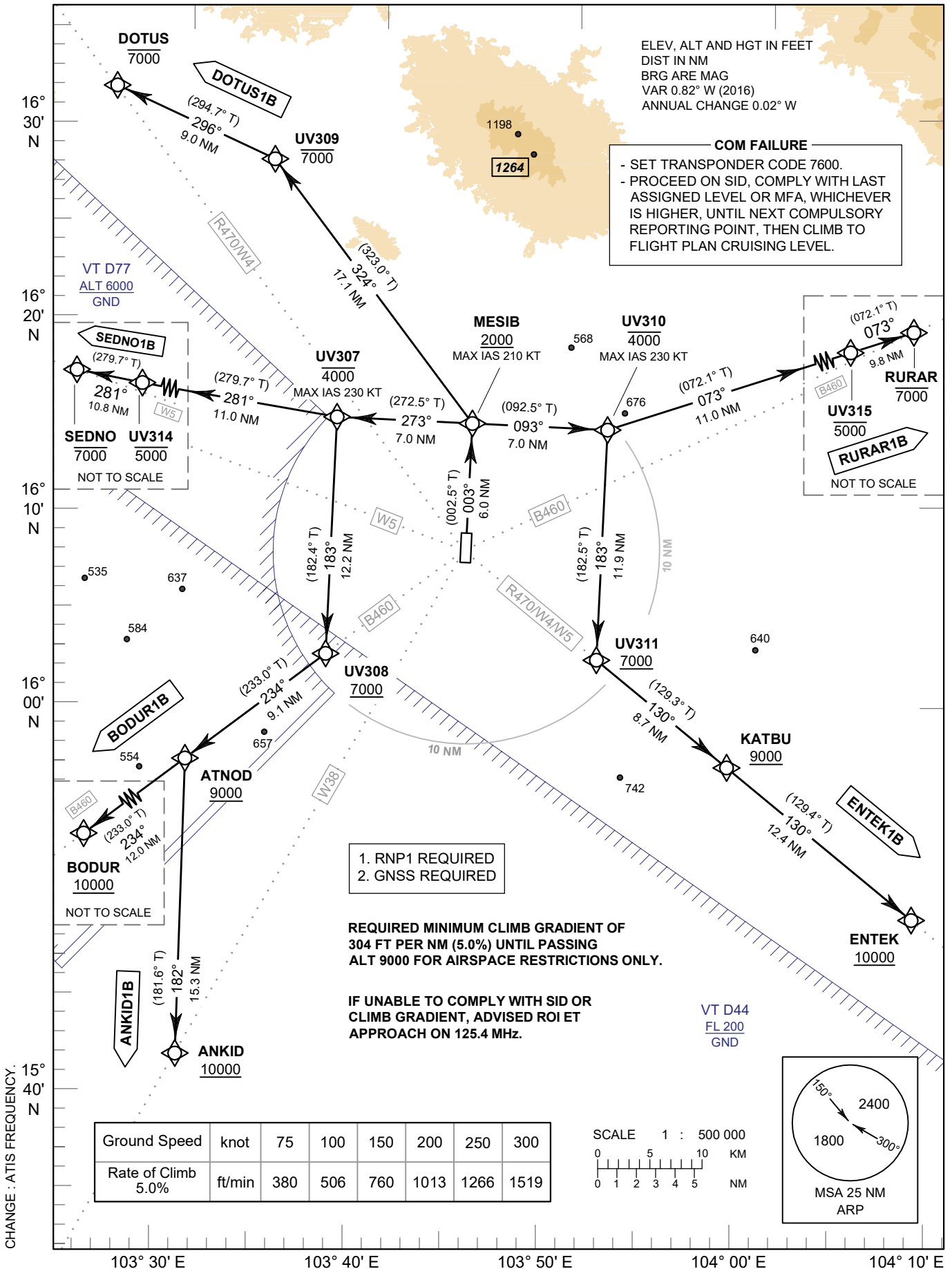
**ROI ET / Roi Et (VTUV)  
RNAV RWY36**

ANKID1B BODUR1B DOTUS1B  
ENTEK1B RURAR1B SEDNO1B

ELEV, ALT AND HGT IN FEET  
DIST IN NM  
BRG ARE MAG  
VAR 0.82° W (2016)  
ANNUAL CHANGE 0.02° W

**COM FAILURE**

- SET TRANSPONDER CODE 7600.
- PROCEED ON SID, COMPLY WITH LAST ASSIGNED LEVEL OR MFA, WHICHEVER IS HIGHER, UNTIL NEXT COMPULSORY REPORTING POINT, THEN CLIMB TO FLIGHT PLAN CRUISING LEVEL.



VT D77  
ALT 6000  
GND

SEDNO UV314  
7000 5000  
NOT TO SCALE

BODUR  
10000  
NOT TO SCALE

ANKID1B  
ANKID  
10000

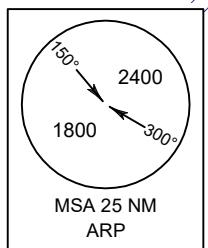
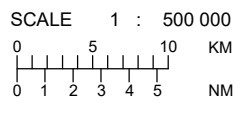
1. RNP1 REQUIRED
2. GNSS REQUIRED

**REQUIRED MINIMUM CLIMB GRADIENT OF  
304 FT PER NM (5.0%) UNTIL PASSING  
ALT 9000 FOR AIRSPACE RESTRICTIONS ONLY.**

**IF UNABLE TO COMPLY WITH SID OR  
CLIMB GRADIENT, ADVISED ROI ET  
APPROACH ON 125.4 MHz.**

VT D44  
FL 200  
GND

Ground Speed	knot	75	100	150	200	250	300
Rate of Climb 5.0%	ft/min	380	506	760	1013	1266	1519



CHANGE : ATIS FREQUENCY.