

AERODROME GROUND MOVEMENT CHART - ICAO

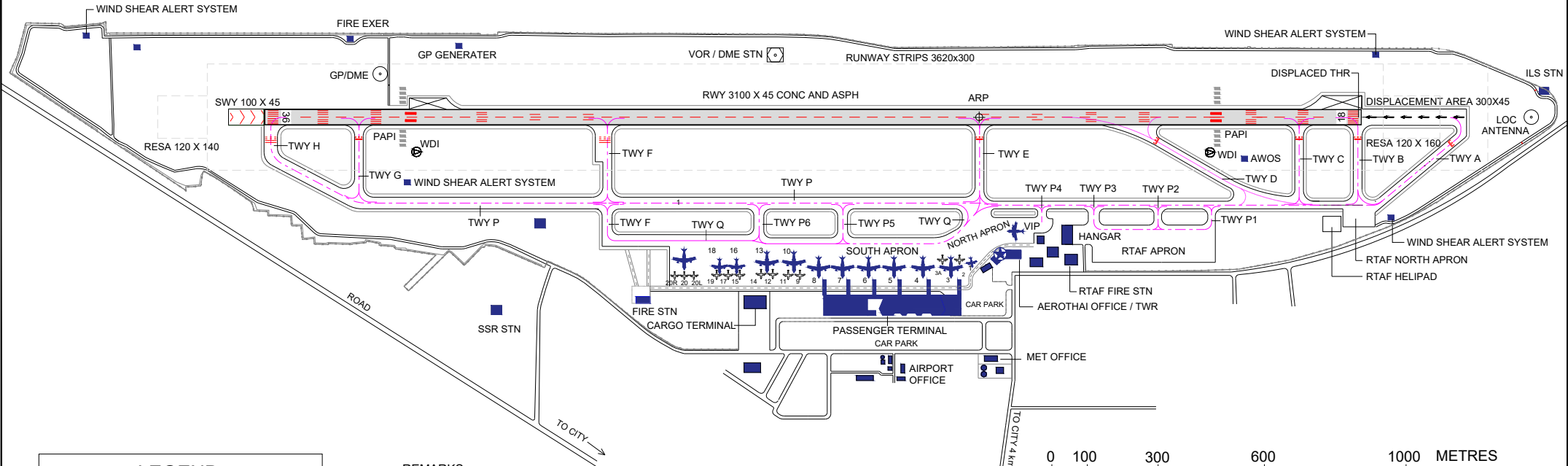
**TWR 118.1
GND 121.9**

CHIANG MAI / Chiang Mai Intl

DIMENSIONS IN METRES



MAG VAR 0° 46' W (2016)
Annual change 0°1'E

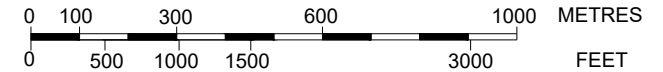


LEGEND	
AERODROME REFERENCE POINT	18 46 17 N 98 57 46 E
BUILDING OR LARGE STRUCTURE	[Blue square symbol]
TAXI ROUTES	[Dashed line symbol]
AIRCRAFT STAND AND IDENTIFICATION	3 + [Aircraft symbol]
RUNWAY HOLDING POSITION	[Red dashed line symbol]
INTERMEDIATE HOLDING POSITION	[Red dotted line symbol]
SERVICE ROAD	[Dashed line symbol]
WIND DIRECTION INDICATOR (LIGHTED)	[Wind indicator symbol]
FENCE	[Dotted line symbol]

REMARKS

- SITE OF ARP : CENTRE LINE OF RUNWAY 1,050 M FROM THRESHOLD RUNWAY 18
- RUNWAY SURFACE AND STRENGTH : CONC AND ASPH , PCN 59/F/A/X/T
- RUNWAY SURFACE AND STRENGTH (DISPLACEMENT AREA) : CONC, PCN 70/R/B/W/T

TAXIWAYS: STRENGTH, SURFACE AND WIDTH		
TAXIWAY	WIDTH (m.)	PCN - SFC
A	27	70/R/B/W/T - CONC
B, C, E, G, P5 and P6	23	59/F/A/X/T - ASPH
D	25	85/F/C/N/T - ASPH
F, H, Q	23	88/R/D/X/T - CONC
P	23	88/R/D/X/T - CONC
	23	59/F/A/X/T - ASPH



CHANGE : REVISED CHART.