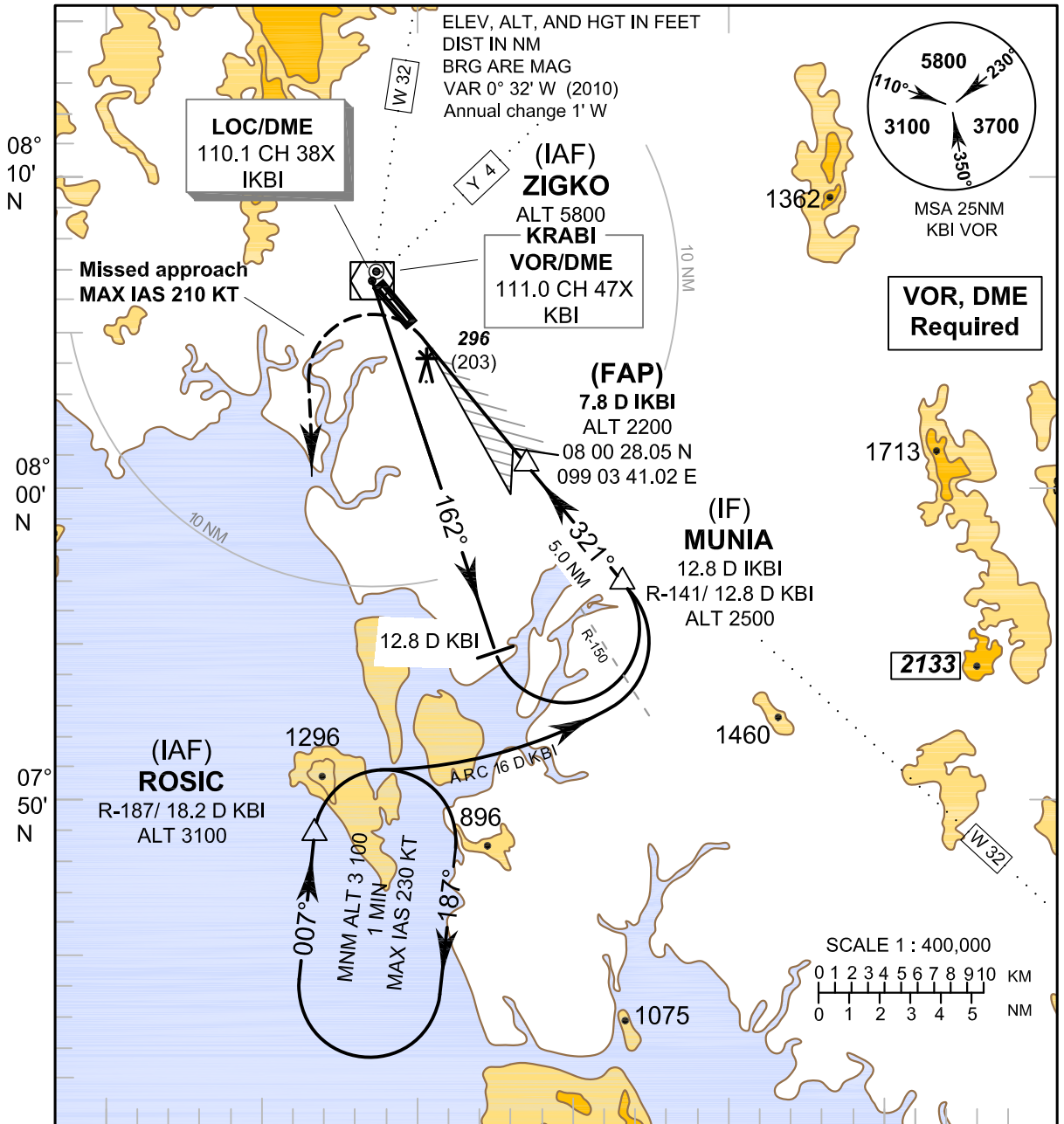


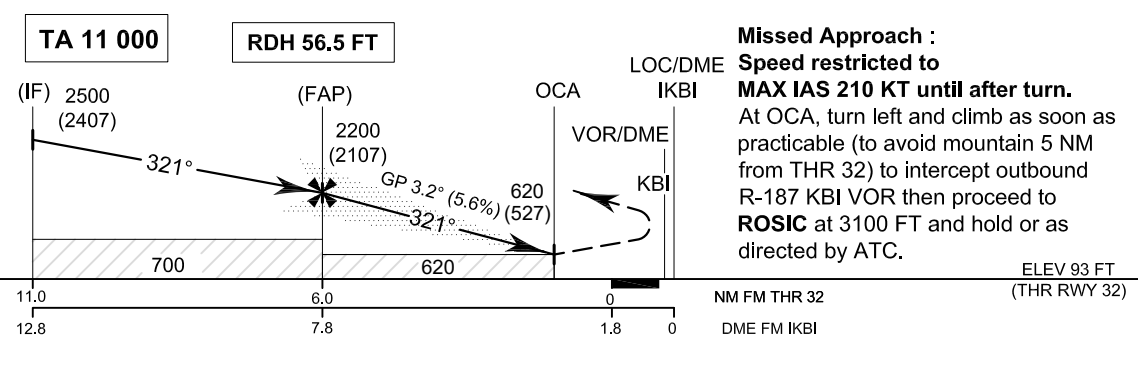
**INSTRUMENT AERODROME ELEV 93 FT**  
**APPROACH HEIGHTS RELATED TO**  
**CHART-ICAO AERODROME ELEV**

APP : 120.05  
 TWR : 122.5, 236.60  
 GND : 121.90  
 ATIS : 132.40

**KRABI/Krabi (VTSG)**  
**ILS RWY 32**



98° 50' E                      99° 00' E                      99° 10' E



**Missed Approach :**  
**Speed restricted to**  
**MAX IAS 210 KT until after turn.**  
 At OCA, turn left and climb as soon as practicable (to avoid mountain 5 NM from THR 32) to intercept outbound R-187 KBI VOR then proceed to **ROSIC** at 3100 FT and hold or as directed by ATC.

ELEV 93 FT  
 (THR RWY 32)

OCA/H	A	B	C	D	Ground Speed	knot	70	90	100	120	140	160
Straight-in approach CAT I	620 (527)				Rate of descent (3.2°)	(ft/min)	396	510	566	679	793	906
Circling	Not Authorized											

CHANGE: OCA.