

## VTPO AD 2.1 AERODROME LOCATION INDICATOR AND NAME

## VTPO - SUKHOTHAI / SUKHOTHAI AIRPORT

## VTPO AD 2.2 AERODROME GEOGRAPHICAL AND ADMINISTRATIVE DATA

1	ARP coordinates and site at AD	171416N 0994906E 1050 M From THR 36
2	Direction and distance from (city)	27 KM From Sukhothai
3	Elevation/Reference temperature	54.5M (179 FT) / 33.3°C
4	Geoid Undulation at AD ELEV PSN	NIL
5	MAG VAR/Annual change	0°48'W (2011) / 0°1'W /YEAR
6	AD Administration, address, telephone, telefax, telex, AFS	Director Of Sukhothai Airport Sukhothai Airport 99 Moo 4 Klongkrajong, Swankhalok District Sukhothai Thailand 64110 Tel: +665 564 7225-6 Fax: +665 564 7225 AFS: VTPOZTX E-mail: thsadmin@bangkokair.com Website:www.sukhothaiairport.com
7	Types of traffic permitted (IFR/VFR)	IFR/VFR
8	Remarks	Operator: Bangkok Airways Public Company Limited

## VTPO AD 2.3 OPERATIONAL HOURS

1	Aerodrome Operator	2300-1300
2	Customs and immigration	Customs: Available Immigration: Available (on request)
3	Health and sanitation	Quarantine available (on request)
4	AIS Briefing Office	NIL
5	ATS Reporting Office (ARO)	2300-1100
6	MET Briefing Office	NIL
7	ATS	2300-1100
8	Fuelling	Available within AD hours
9	Handling	Available within AD hours
10	Security	H24
11	De-icing	NIL
12	Remarks	The airport has provided ground handling agents as following BAGS GROUND SERVICE LTD., (BAGS) E-mail: ths-stationmanager@bags-grounds-service.com Tel: +666 1172 2796 +665 564 7225 +665 564 7226

**VTPO AD 2.4 HANDLING SERVICES AND FACILITIES**

1	Cargo-handling facilities	NIL
2	Fuel/oil types	JET A-1
3	Fuelling facilities/capacity	Tank Refueling @ 12,000 L, 1 Trailer 4,500 L : By BAFS
4	De-icing facilities	NIL
5	Hangar space for visiting aircraft	NIL
6	Repair facilities for visiting aircraft	NIL
7	Remarks	NIL

**VTPO AD 2.5 PASSENGER FACILITIES**

1	Hotels	At AD
2	Restaurants	At AD
3	Transportation	Limousines
4	Medical facilities	First aid at airport
5	Bank and Post Office	Available in town
6	Tourist Office	Office in town Tel: +665 561 0222 Fax: +665 561 4260
7	Remarks	NIL

**VTPO AD 2.6 RESCUE AND FIRE FIGHTING SERVICES**

1	AD category for fire fighting	Category 5
2	Rescue equipment	Available at fire fighting truck
3	Capability for removal of disabled aircraft	NIL
4	Remarks	NIL

**VTPO AD 2.7 SEASONAL AVAILABILITY - CLEARING**

1	Types of clearing equipment	NIL
2	Clearance priorities	NIL
3	Remarks	The aerodrome is available all seasons.

**VTPO AD 2.8 APRONS, TAXIWAYS AND CHECK LOCATIONS/POSITIONS DATA**

1	Apron surface and strength	Surface: Concrete Strength: PCN 44/R/C/W/T
2	Taxiway width, surface and strength	Width: 30 M Surface: Concrete and asphalt Strength: PCN 40/F/C/X/T
3	Altimeter checkpoint location and elevation	ALC location: THR RWY 18/36 Elevation: 54.5 M (179 FT)
4	VOR checkpoints	NIL
5	INS checkpoints	NIL
6	Remarks	NIL

**VTPO AD 2.9 SURFACE MOVEMENT GUIDANCE AND CONTROL SYSTEM AND MARKINGS**

1	Use of aircraft stand ID signs, TWY guide lines and visual docking/parking guidance system of aircraft stands	Taxi guidance sign and guide line
2	RWY and TWY markings and LGT	RWY and TWY: Marked and Lighted
3	Stop bars	Marked
4	Remarks	NIL

**VTPO AD 2.10 AERODROME OBSTACLES**

In approach/TKOF areas			In circling areas and at AD		Remarks
1			2		3
RWY/Area affected	Obstacle type Elevation Markings/LGT	Coordinates	Obstacle type Elevation Markings/LGT	Coordinates	
a	b	c	a	b	
NIL			NIL		NIL

**VTPO AD 2.11 METEOROLOGICAL INFORMATION PROVIDED**

1	Associated MET Office	Aeronautical Meteorological Station-Sukhothai, Northern Meteorological Center, Thai Meteorological Department (TMD)
2	Hours of service MET Office outside hours	2300-1030 NIL
3	Office responsible for TAF preparation Periods of validity	Supply TAF from Northern Meteorological Center 24 HR
4	Type of landing forecast Interval of issuance	TREND 1 HR
5	Briefing/consultation provided	Personal Consultation Tel: +665 564 7225 ext. 7251
6	Flight documentation Language(s) used	NIL
7	Charts and other information available for briefing or consultation	S, U85, Daily Weather Forecast, satellite and radar images
8	Supplementary equipment available for providing information	Barometer, Anemometer and Thermometer Screen
9	ATS units provided with information	Sukhothai TWR
10	Additional information (limitation of service, etc.)	NIL

VTPO AD 2.12 RUNWAY PHYSICAL CHARACTERISTICS

Designations RWY NR	TRUE BRG	Dimensions of RWY(M)	Strength (PCN) and surface of RWY and SWY	THR coordinates RWY end coordinates THR geoid undulation	THR elevation and highest elevation of TDZ of precision APP RWY
1	2	3	4	5	6
18	180°	2100x45	PCN 40/F/C/X/T Asphalt	171449.87N 0994906.66E	THR 54.5 M/179 FT
36	360°	2100x45	PCN 40/F/C/X/T Asphalt	171341.56N 0994905.27E	THR 54.5 M/179 FT

Slope of RWY-SWY	SWY dimensions (M)	CWY dimensions (M)	Strip dimensions (M)	OFZ	Remarks
7	8	9	10	11	12
0%	NIL	60x150	2220x150	NIL	NIL
0%	NIL	150x150	2220x150	NIL	NIL

VTPO AD 2.13 DECLARED DISTANCES

RWY Designator	TORA (M)	TODA (M)	ASDA (M)	LDA (M)	Remarks
1	2	3	4	5	6
18	2100	2160	2100	2100	NIL
36	2100	2250	2100	2100	NIL

VTPO AD 2.14 APPROACH AND RUNWAY LIGHTING

RWY Designator	APCH LGT type LEN INTST	THR LGT colour WBAR	VASIS (MEHT) PAPI	TDZ, LGT LEN	RWY Centre Line LGT Length, spacing, colour, INTST	RWY edge LGT LEN, spacing, colour INTST	RWY End LGT colour WBAR	SWY LGT LEN (M) colour	Remarks
1	2	3	4	5	6	7	8	9	10
18	-	Green	PAPI BOTH 3°	-	-	2100 M 60 M Clear/Yellow	Red	-	-
36	-	Green	PAPI BOTH 3°	-	-	2100 M 60 M Clear/Yellow	Red	-	-

VTPO AD 2.15 OTHER LIGHTING, SECONDARY POWER SUPPLY

1	ABN/IBN location, characteristics and hours of operation	ABN: At tower building. FLG W/G EV 3 Sec. 0000-1100
2	LDI location and LGT Anemometer location and LGT	- At MET Station, 1000 M from THR 18
3	TWY edge and centre line lighting	NIL
4	Secondary power supply/switch-over time	Electric Generator 15 sec.
5	Remarks	NIL

**VTPO AD 2.16 HELICOPTER LANDING AREA**

1	Coordinates TLOF or THR of FATO Geoid Undulation	NIL
2	TLOF and/or FATO elevation M/FT	NIL
3	TLOF and FATO area dimensions, surface, strength, marking	NIL
4	True and MAG BRG of FATO	NIL
5	Declared distance available	NIL
6	APP and FATO lighting	NIL
7	Remarks	NIL

**VTPO AD 2.17 ATS AIRSPACE**

1	Designation and lateral limits	A circle of 5 NM radius centred on THS NDB (171406.81N 0994919.23E)
2	Vertical limits	2000 FT/AGL
3	Airspace classification	C
4	ATS unit call sign Language(s)	Sukhothai Tower English, Thai
5	Transition altitude	11000 FT
6	Remarks	NIL

**VTPO AD 2.18 ATS COMMUNICATION FACILITIES**

Service designation	Call sign	Frequency	Hours of operation	Remarks
1	2	3	4	5
APP	Sukhothai Approach	120.7 MHZ 121.5 MHZ <sup>1)</sup>	As AD OPR HR	<sup>1)</sup> Emergency frequency
TWR	Sukhothai Tower	122.9 MHZ 121.5 MHZ <sup>1)</sup>	2300-1300	

**VTPO AD 2.19 RADIO NAVIGATION AND LANDING AIDS**

Type of aid, MAG/VAR CAT of ILS/MLS (For VOR/ILS/MLS, give declination)	ID	Frequency	Hours of operation	Position of transmitting antenna coordinates	Elevation of DME transmitting antenna	Remarks
1	2	3	4	5	6	7
NDB	THS	292 KHZ	H24	171406.81N 0994919.23E		<ol style="list-style-type: none"> <li>Route coverage checked on bearing 021° from THS to PR altitude 9 000 FT flown to 57 NM found satisfactory</li> <li>Coverage 50 NM clockwise orbit data refer from commissioning checked as follows: <ul style="list-style-type: none"> <li>Bearing 041°-100° at altitude 4 000 FT</li> <li>Bearing 101°-190° at altitude 2 000 FT</li> <li>Bearing 191°-040° at altitude 5 000 FT</li> </ul> </li> </ol>

Type of aid, MAG/VAR CAT of ILS/MLS (For VOR/ILS/MLS, give declination)	ID	Frequency	Hours of operation	Position of transmitting antenna coordinates	Elevation of DME transmitting antenna	Remarks
1	2	3	4	5	6	7
DME	THS	CH40X (292 KHZ)	H24	171408.27N 0994906.89E	181.03 FT	DME: Paired with NDB Freq.
LOC RWY36 ILS CAT I	ISKT	109.5 MHZ	H24	171458.01N 0994906.83E		LOC: Designated Operation coverage 18 NM, ALT 6500 FT/AMSL.
GP		332.6 MHZ	H24	171351.07N 0994902.08E		
DME	ISKT	CH32X (109.5 MHZ)	H24	171457.85N 0994909.24E	175.79 FT	DME: Paired with LOC Freq

**VTPO AD 2.20 LOCAL AERODROME REGULATIONS**

1. Establishment of significance reporting point for inbound and outbound route within Sukhothai TMA are as follows:

NAME	CO-ORDINATES	BEARING /DISTANCE FM THS (NDB)
TOPAS	172916.19N 0992358.16E	BRG 302 / 28NM
SARIM	173029.97N 0994737.09E	BRG 355 / 16 NM
KIMLET	164927.60N 0994429.32E	BRG 190 / 25 NM

2. In order to facilitates all IFR aircraft to / from Sukhothai airport arrival / departure preference routes are established at Sukhothai airport as follows:

Inbound to Sukhothai Airport

- Bangkok to Sukhothai

The flight plan route: BKK(DVOR/DME)-W9-PSL(DVOR/DME) –DCT-THS(NDB).

- Chiang Mai to Sukhothai

The flight plan route: CMA (DVOR/DME)-W9-SARIM(173029.97N0994737.09E)-DCT-THS(NDB)

Outbound from Sukhothai Airport

- Sukhothai to Bangkok

The flight plan route: THS (NDB)-DCT-KIMET(164927.60N0994429.23E)-DCT-BEKOD-A464-BKK(DVOR/DME).

- Sukhothai to Chiang Mai

The flight plan route: THS(NDB)-DCT-TOPAS(172916.19N0992358.16E)-A464-CMA(DVOR/DME).

3. Due to temporary area at the right side of the threshold runway 36, the aircraft extremely caution while landing.

**VTPO AD 2.21 NOISE ABATEMENT PROCEDURES**

NIL

**VTPO AD 2.22 FLIGHT PROCEDURES**

NIL

**VTPO AD 2.23 ADDITIONAL INFORMATION**

NIL

## VTPO AD 2.24 CHARTS RELATED TO AN AERODROME

Chart name	Page
Aerodrome Chart - ICAO	AD 2-VTPO-2-1
Aerodrome Ground Movement Chart - ICAO	AD 2-VTPO-2-3
Aerodrome Obstacle Chart - ICAO Type A - RWY 18/36	AD 2-VTPO-3-1
Standard Departure Chart - Instrument (SID) - ICAO - RNAV RWY 18 - KIMET1A TOPAS1A	AD 2-VTPO-6-1
Standard Departure Chart - Instrument (SID) - ICAO - RNAV RWY 18 - KIMET1A TOPAS1A (Tabular description)	AD 2-VTPO-6-2
Standard Departure Chart - Instrument (SID) - ICAO - RNAV RWY 36 - KIMET1B TOPAS1B	AD 2-VTPO-6-3
Standard Departure Chart - Instrument (SID) - ICAO - RNAV RWY 36 - KIMET1B TOPAS1B (Tabular description)	AD 2-VTPO-6-4
Instrument Approach Chart - ICAO - NDB RWY 36	AD 2-VTPO-8-1
Instrument Approach Chart - ICAO - ILS or LOC RWY 36	AD 2-VTPO-8-3
Instrument Approach Chart - ICAO - ILS or LOC RWY 36 (Tabular description)	AD 2-VTPO-8-4
Instrument Approach Chart - ICAO - ILS or LOC RWY 36 (Fix and point list table)	AD 2-VTPO-8-5
Instrument Approach Chart - ICAO - RNP RWY 18	AD 2-VTPO-8-7
Instrument Approach Chart - ICAO - RNP RWY 18 (Tabular description)	AD 2-VTPO-8-8
Instrument Approach Chart - ICAO - RNP RWY 36	AD 2-VTPO-8-9
Instrument Approach Chart - ICAO - RNP RWY 36 (Tabular description)	AD 2-VTPO-8-10

**INTENTIONALLY BLANK**



# AERODROME CHART - ICAO

17° 14' 16" N  
099° 49' 06" E

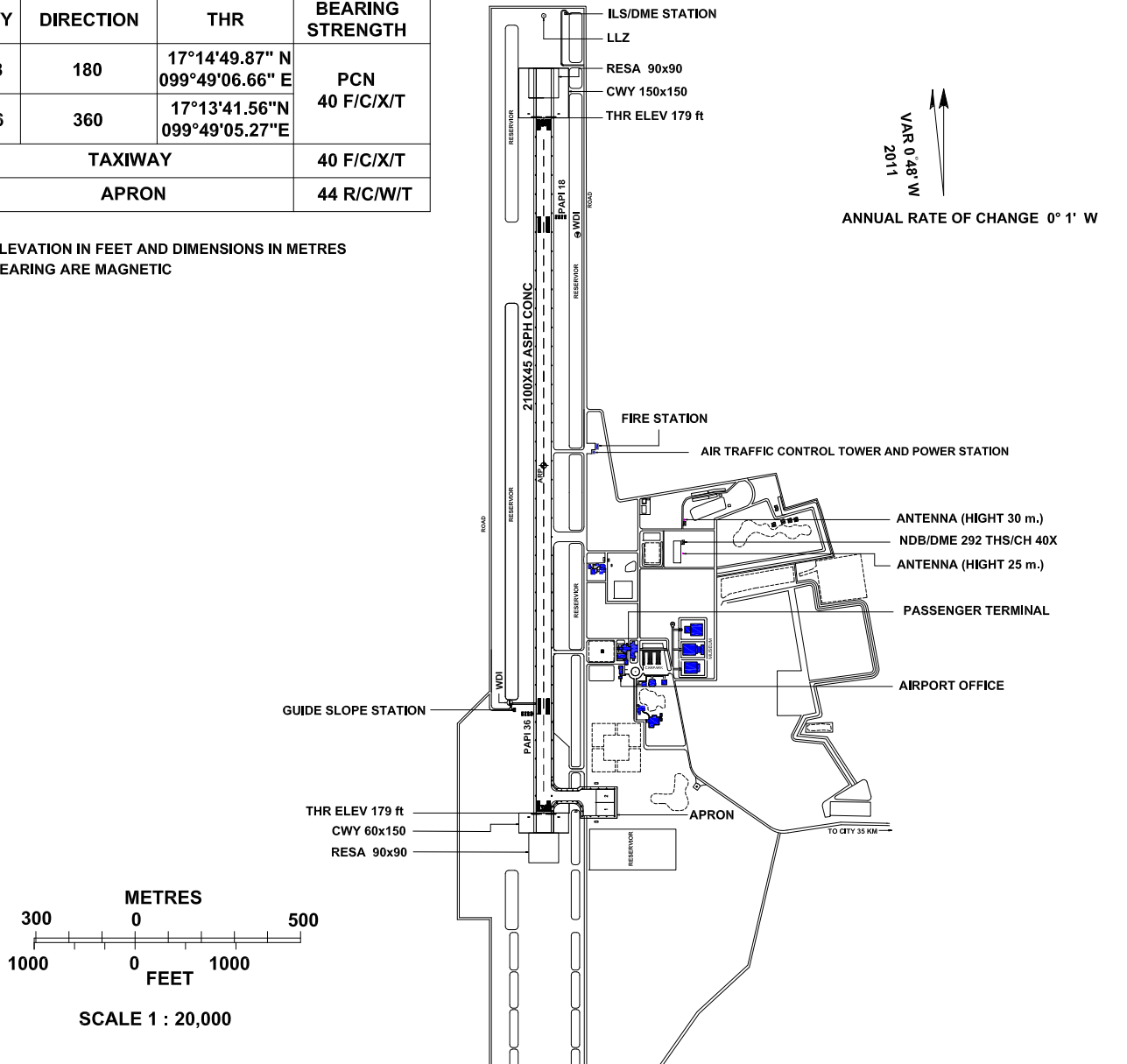
ELEV 179 ft  
54.50 m

TWR 118.7

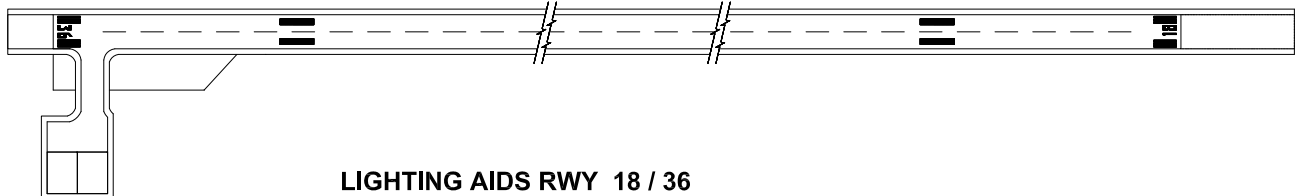
SUKHOTHAI / Sukhothai

RWY	DIRECTION	THR	BEARING STRENGTH
18	180	17°14'49.87" N 099°49'06.66" E	PCN 40 F/C/X/T
36	360	17°13'41.56" N 099°49'05.27" E	
TAXIWAY			40 F/C/X/T
APRON			44 R/C/W/T

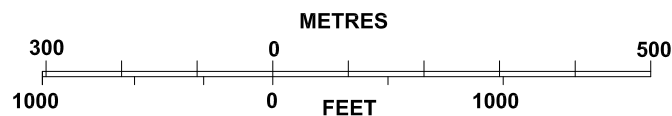
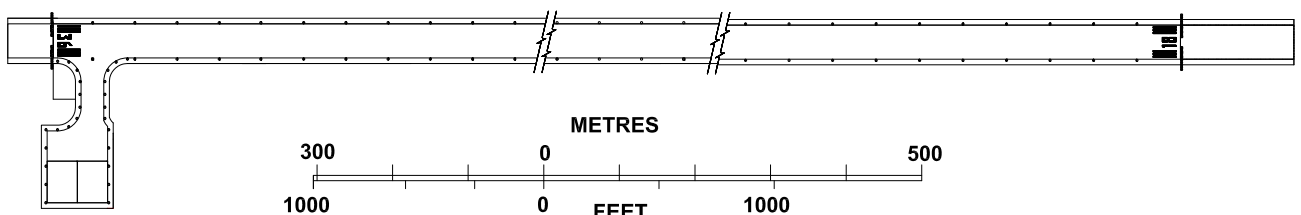
ELEVATION IN FEET AND DIMENSIONS IN METRES  
BEARING ARE MAGNETIC



## MARKING AIDS RWY 18 / 36



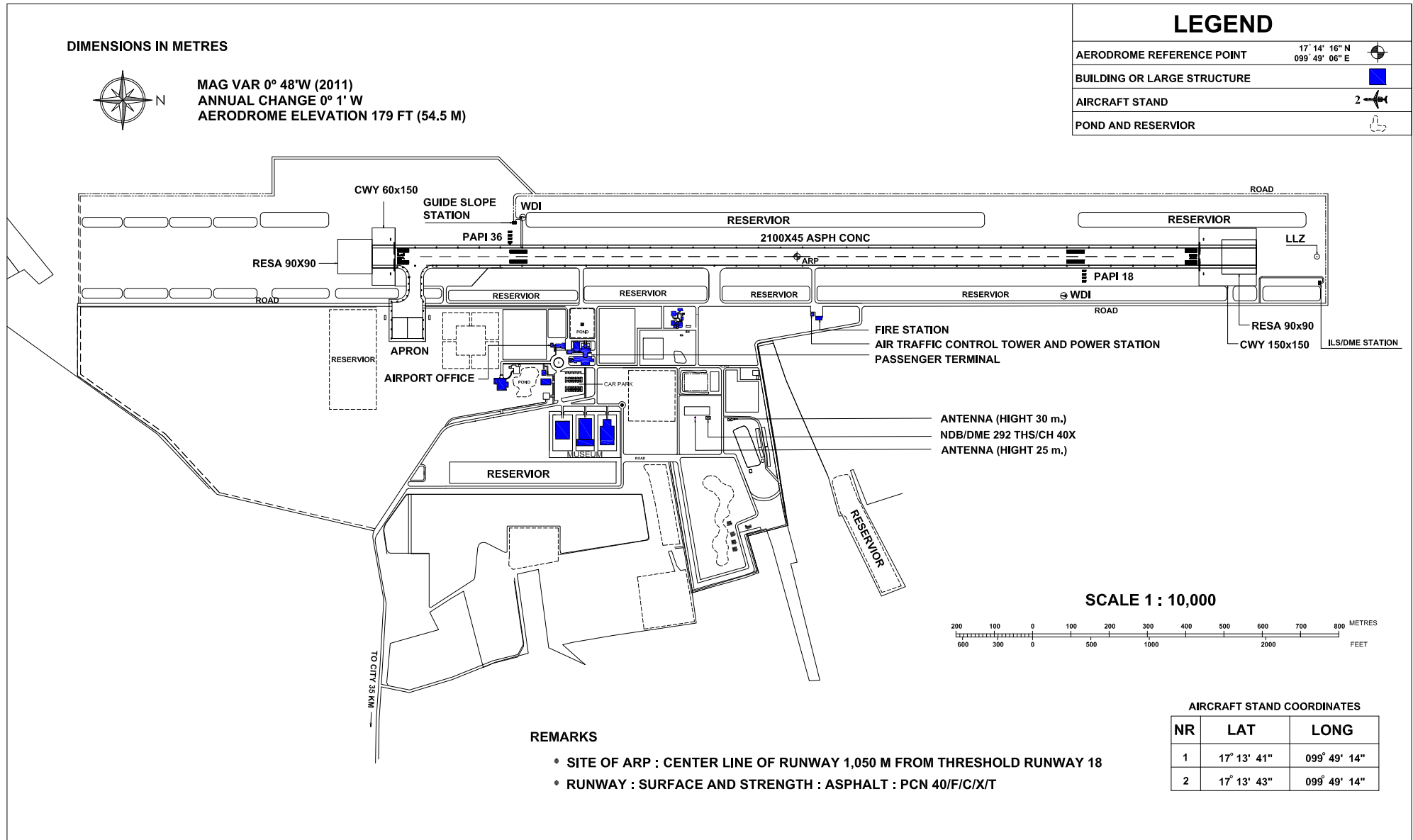
## LIGHTING AIDS RWY 18 / 36



**INTENTIONALLY BLANK**

# Aerodrome Ground Movement Chart - ICAO

SUKHOTHAI / Sukhothai



**INTENTIONALLY BLANK**

AERODROME OBSTACLE CHART - ICAO  
TYPE A (OPERATING LIMITATIONS)

SUKHOTHAI / Sukhothai Airport

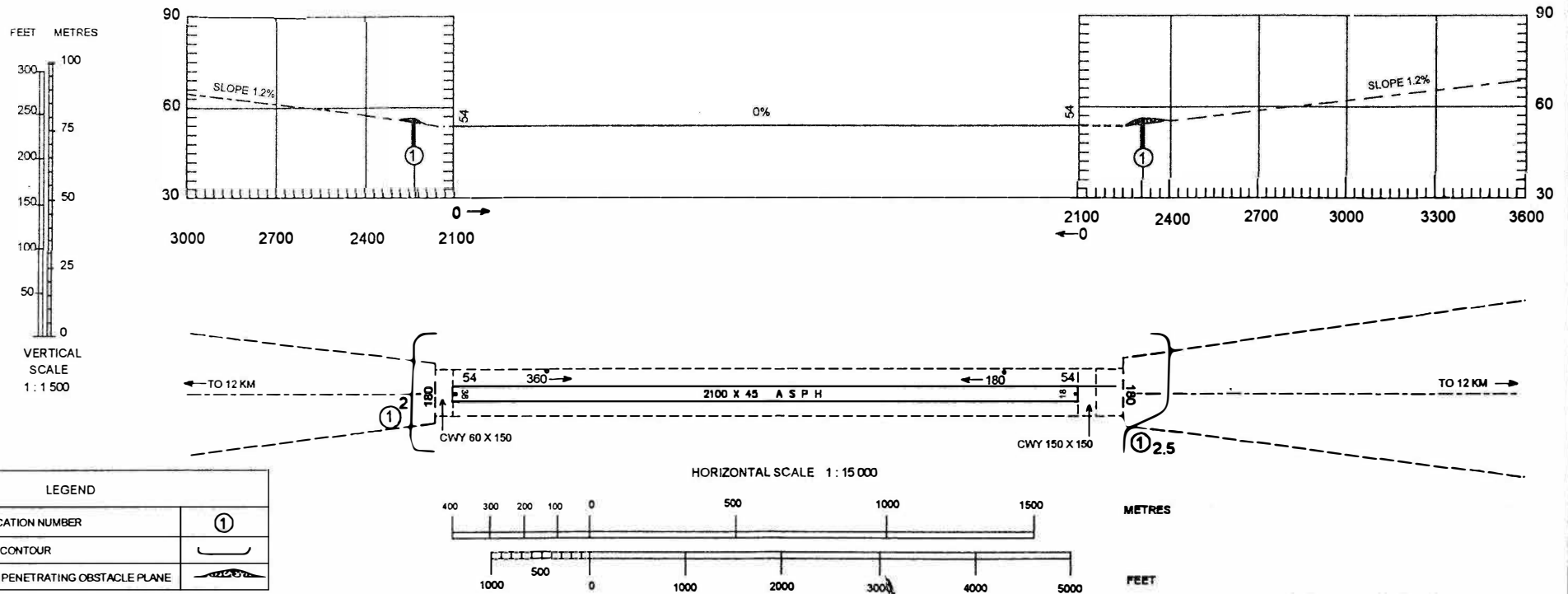
DIMENSIONS AND ELEVATIONS IN METRES

MAGNETIC VARIATION 0°12' W (2001)

RWY 18 / 36

DECLARED DISTANCES

RWY 36		RWY 18	
2100	TAKE-OFF RUN AVAILABLE	2100	
2250	TAKE-OFF DISTANCE AVAILABLE	2160	
2100	ACCELERATE STOP DISTANCE AVAILABLE	2100	
2100	LANDING DISTANCE AVAILABLE	2100	



CHANGE : PAGE NUMBER CHANGED.

**INTENTIONALLY BLANK**

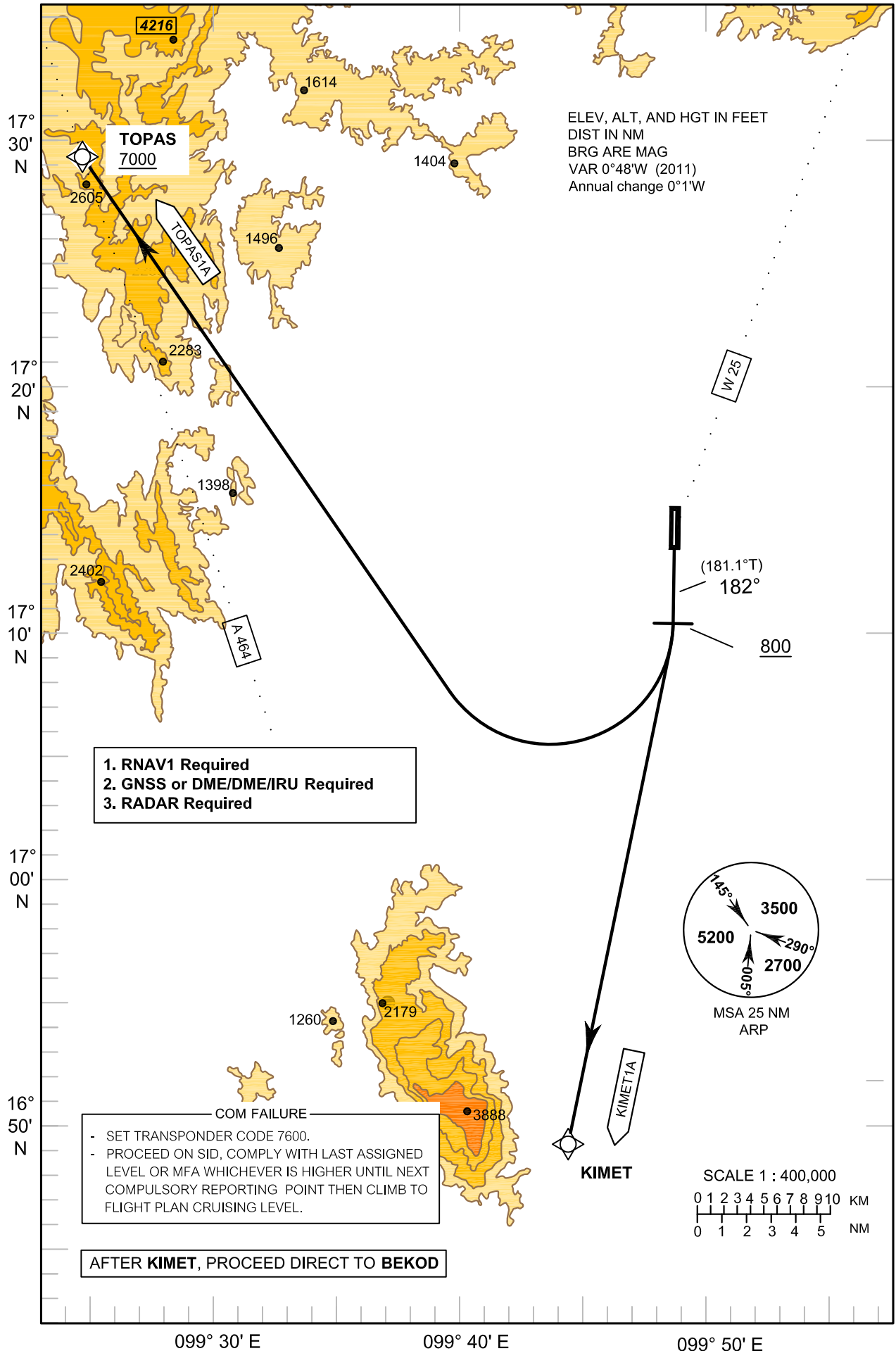
**STANDARD DEPARTURE CHART -  
INSTRUMENT (SID) - ICAO**

TRANSITION ALTITUDE  
11000 FT

APP : 120.7  
TWR : 122.9

**SUKHOTHAI/Sukhothai (VTPO)  
RNAV RWY18**

KIMET1A TOPAS1A



**1. RNAV1 Required  
2. GNSS or DME/DME/IRU Required  
3. RADAR Required**

COM FAILURE

- SET TRANSPONDER CODE 7600.
- PROCEED ON SID, COMPLY WITH LAST ASSIGNED LEVEL OR MFA WHICHEVER IS HIGHER UNTIL NEXT COMPULSORY REPORTING POINT THEN CLIMB TO FLIGHT PLAN CRUISING LEVEL.

**AFTER KIMET, PROCEED DIRECT TO BEKOD**

099° 30' E                      099° 40' E                      099° 50' E

CHANGE : PAGE NUMBER CHANGED.

STANDARD DEPARTURE CHART -  
INSTRUMENT (SID) - ICAO

SUKHOTHAI/Sukhothai (VTPO)  
RNAV RWY18

KIMET1A TOPAS1A

TABULAR DESCRIPTION

RNAV RWY18											
Serial	Path	Waypoint Identifier	Flyover	Course	Magnetic	Distance	Turn	Altitude	Speed	VPA/	Navigation
Number	Descriptor			° M (° T)	Variation	(NM)	Direction	(FT)	(KT)	TCH	Specification
010	-	DER RWY18	-	-	+0.9	-	-	-	-	-	RNAV 1
020	CA	-	-	182°(181.1°)	+0.9	-	-	+800	-	-	RNAV 1
030	DF	KIMET	-	-	+0.9	-	R	-	-	-	RNAV 1
010	-	DER RWY18	-	-	+0.9	-	-	-	-	-	RNAV 1
020	CA	-	-	182°(181.1°)	+0.9	-	-	+800	-	-	RNAV 1
030	DF	TOPAS	-	-	+0.9	-	R	+7000	-	-	RNAV 1

WAYPOINT LIST

RNAV RWY18			
Waypoint Identifier	Coordinates		
DER RWY18	17° 13' 41.56" N	099° 49' 05.27" E	
KIMET	16° 49' 27.60" N	099° 44' 29.32" E	
TOPAS	17° 29' 16.19" N	099° 23' 58.16" E	



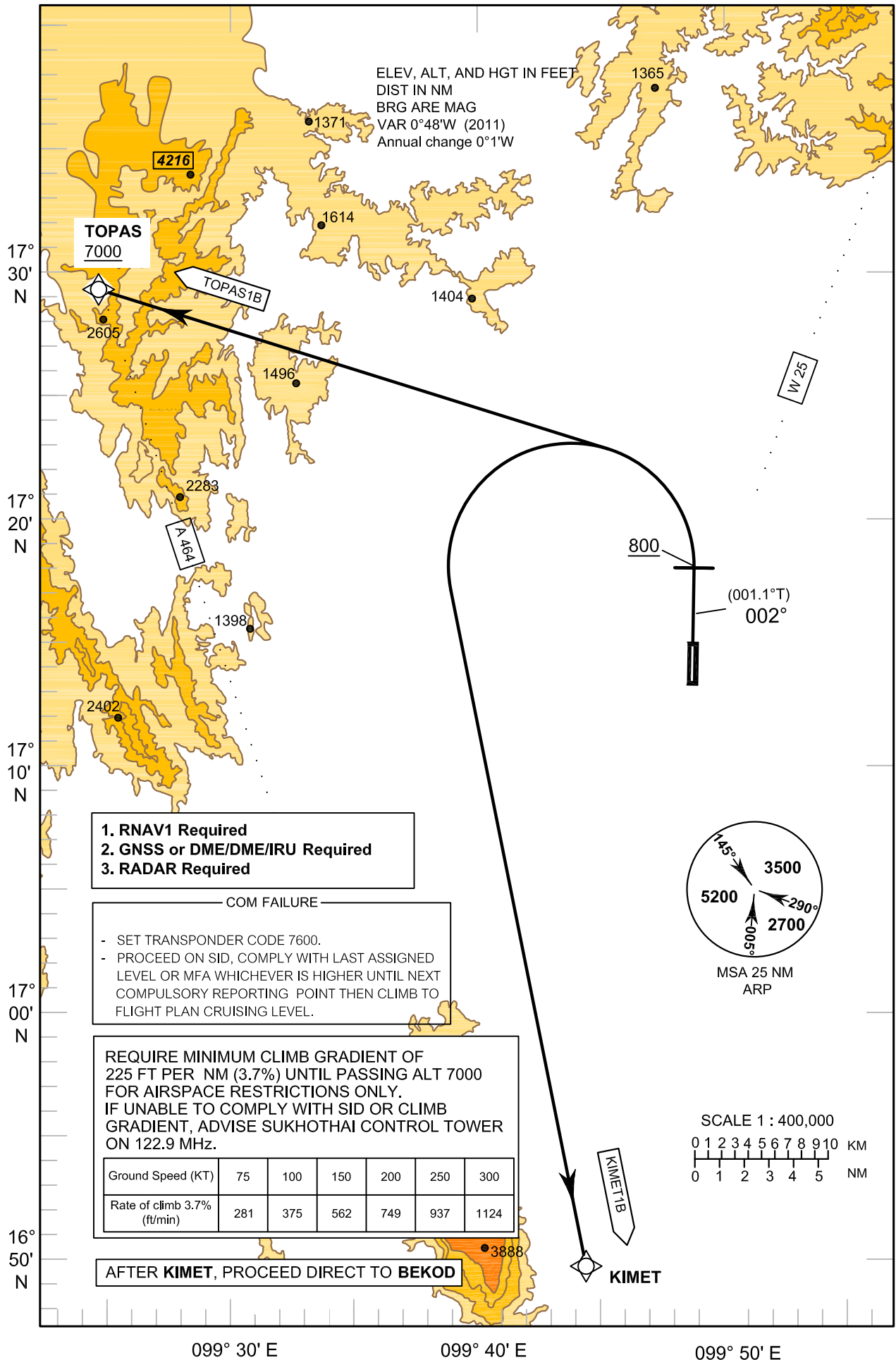
**STANDARD DEPARTURE CHART -  
INSTRUMENT (SID) - ICAO**

TRANSITION ALTITUDE  
11000 FT

APP : 120.7  
TWR : 122.9

**SUKHOTHAI/Sukhothai (VTPO)  
RNAV RWY36**

KIMET1B TOPAS1B



CHANGE : PAGE NUMBER CHANGED.

**STANDARD DEPARTURE CHART -  
INSTRUMENT (SID) - ICAO**

**SUKHOTHAI/Sukhothai (VTPO)  
RNAV RWY36**

KIMET1B TOPAS1B

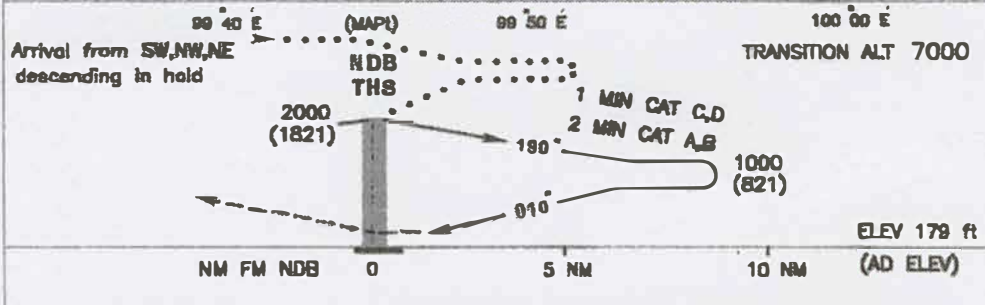
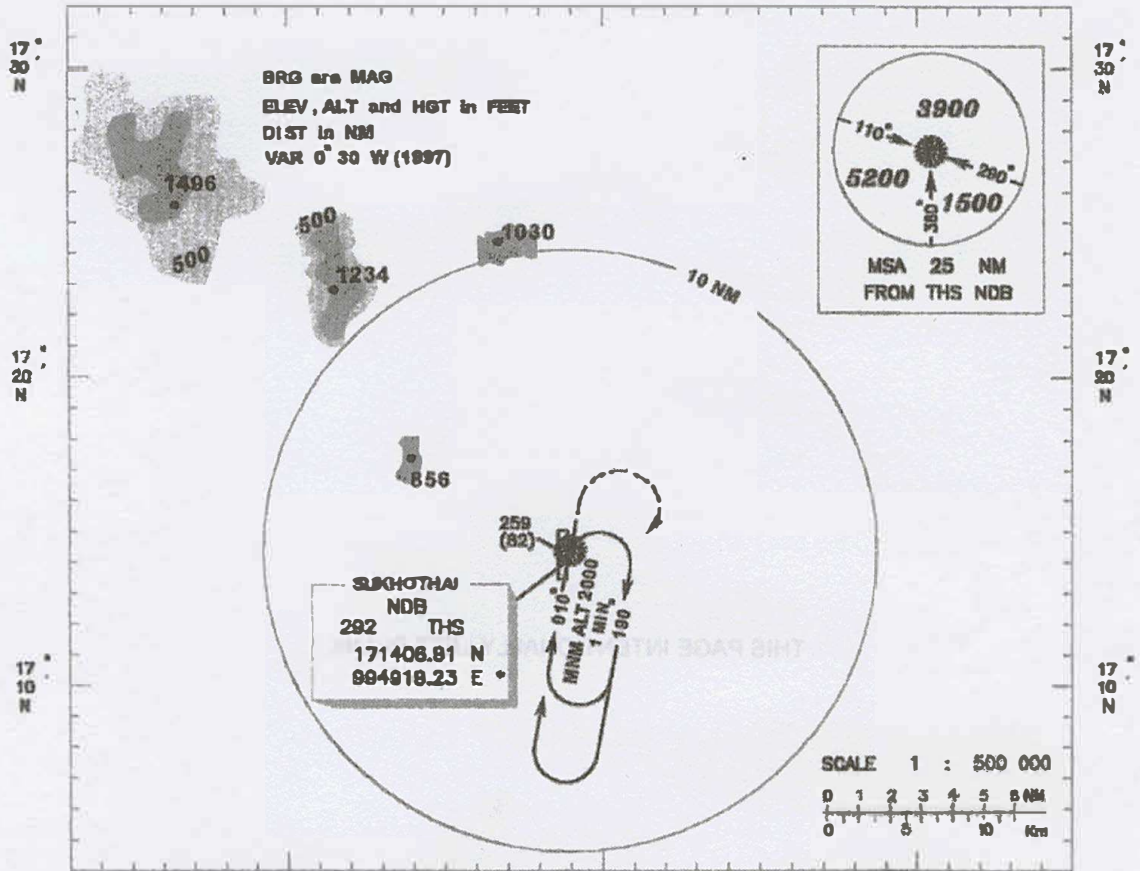
**TABULAR DESCRIPTION**

RNAV RWY36											
Serial	Path	Waypoint Identifier	Flyover	Course	Magnetic	Distance	Turn	Altitude	Speed	VPA/	Navigation
Number	Descriptor			° M (° T)	Variation	(NM)	Direction	(FT)	(KT)	TCH	Specification
010	-	DER RWY36	-	-	+0.9	-	-	-	-	-	RNAV 1
020	CA	-	-	002°(001.1°)	+0.9	-	-	+800	-	-	RNAV 1
030	DF	KIMET	-	-	+0.9	-	L	-	-	-	RNAV 1
010	-	DER RWY36	-	-	+0.9	-	-	-	-	-	RNAV 1
020	CA	-	-	002°(001.1°)	+0.9	-	-	+800	-	-	RNAV 1
030	DF	TOPAS	-	-	+0.9	-	L	+7000	-	-	RNAV 1

**WAYPOINT LIST**

RNAV RWY36			
Waypoint Identifier	Coordinates		
DER RWY 36	17° 14' 49.87" N	099° 49' 06.66" E	
KIMET	16° 49' 27.60" N	099° 44' 29.32" E	
TOPAS	17° 29' 16.19" N	099° 23' 58.16" E	

**INSTRUMENT APPROACH CHART-I CAO**      **AERODROME ELEV 179 R**      **APP : 120.7**      **SUKHOTHAI / Sukhothai**  
**HEIGHTS RELATED TO AERODROME ELEV**      **TWR : 110.7**      **NDB**  
 98 40 E      99 50 E      100 00 E      **RWY 36**



**MISSED APPROACH :** At NDB climb straight ahead to 1000(821) ft ,then turn right climbing to NDB at 2000(1821) ft and hold.

OCA / H	A	B	C	D
Straight-in Approach	560 (381)			
Circling	575 (398)	670 (491)	770 (591)	870 (691)

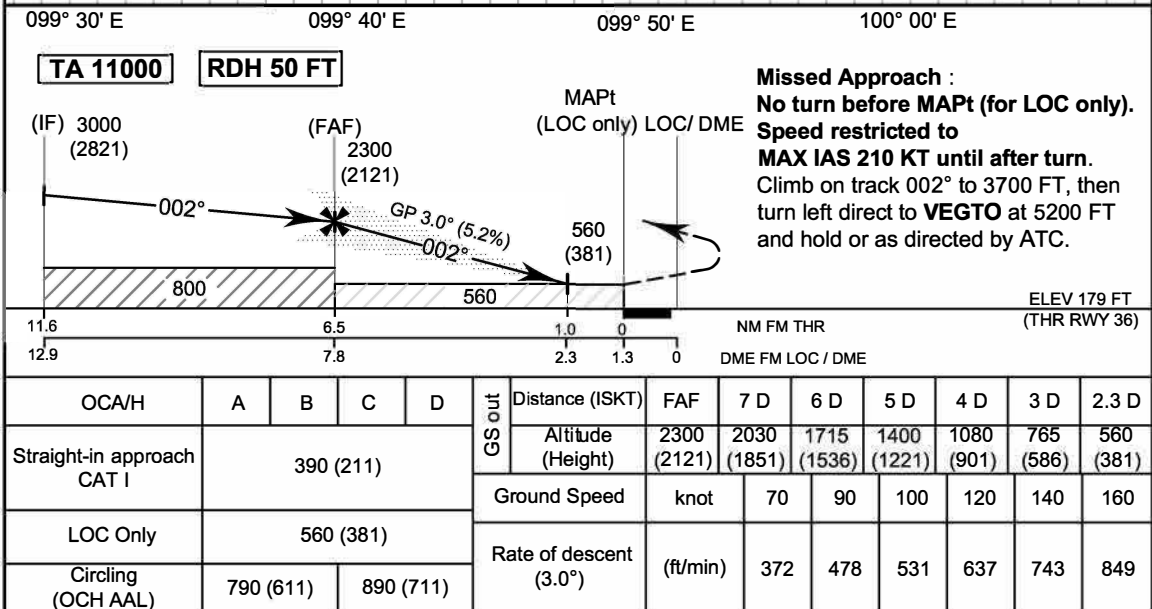
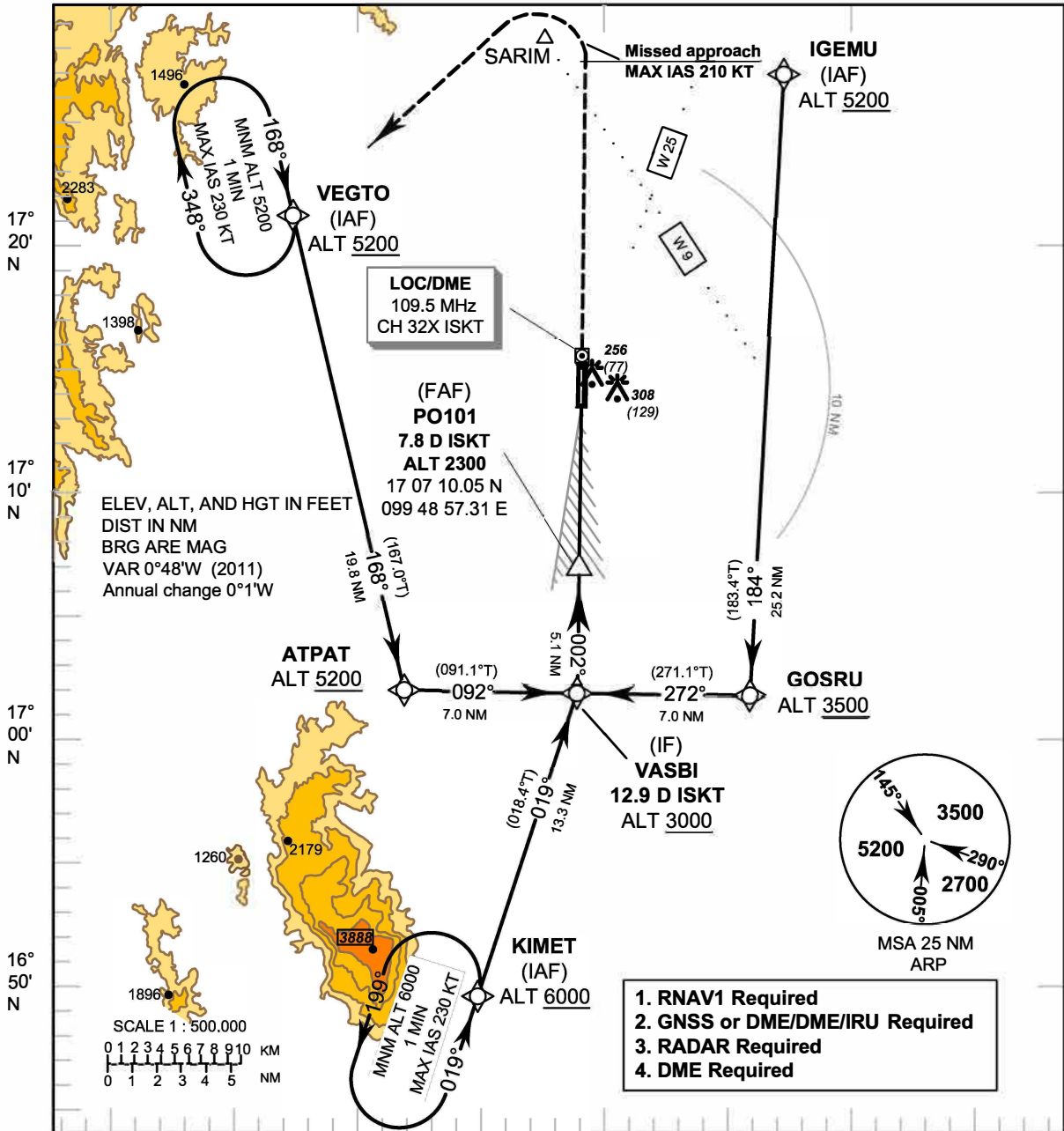
CHANGE : PAGE NUMBER CHANGED.

**INTENTIONALLY BLANK**

**INSTRUMENT AERODROME ELEV 179 FT**  
**APPROACH HEIGHTS RELATED TO**  
**CHART-ICAO THR RWY36 - ELEV 179 FT**

APP : 120.7  
TWR : 122.9

**SUKHOTHAI/Sukhothai (VTPO)**  
**ILS or LOC RWY36**



CHANGE : PAGE NUMBER CHANGED.

**INSTRUMENT AERODROME ELEV 179 FT**  
**APPROACH HEIGHTS RELATED TO**  
**CHART-ICAO THR RWY36 - ELEV 179 FT**

**SUKHOTHAI/Sukhothai (VTPO)**  
**ILS or LOC RWY36**

**TABULAR DESCRIPTION**

ILS or LOC RWY36											
Serial	Path	Waypoint Identifier	Flyover	Course	Magnetic	Distance	Turn	Altitude	Speed	VPA/	Navigation
Number	Descriptor			° M (° T)	Variation	(NM)	Direction	(FT)	(KT)	RDH	Specification
010	IF	VEGTO (IAF)	-	-	+0.9	-	-	+5200	-	-	RNAV 1
020	TF	ATPAT	-	168°(167.0°)	+0.9	19.8	L	+5200	-	-	RNAV 1
030	TF	VASBI (IF)	-	092°(091.1°)	+0.9	7.0	-	+3000	-	-	RNAV 1
010	IF	IGEMU (IAF)	-	-	+0.9	-	-	+5200	-	-	RNAV 1
020	TF	GOSRU	-	184°(183.4°)	+0.9	25.2	R	+3500	-	-	RNAV 1
030	TF	VASBI (IF)	-	272°(271.1°)	+0.9	7.0	-	+3000	-	-	RNAV 1
010	IF	KIMET (IAF)	-	-	+0.9	-	-	+6000	-	-	RNAV 1
020	TF	VASBI (IF)	-	019°(018.4°)	+0.9	13.3	-	+3000	-	-	RNAV 1
010	IF	VASBI (IF)	-	-	+0.9	-	-	+3000	-	-	RNAV 1
TRANSITION TO ILS or LOC											
020	TF	PO101 (FAF)	-	002°(001.1°)	+0.9	5.1	-	@2300	-	-	ILS
030	TF	PO102 (MAPt)	Y	002°(001.1°)	+0.9	6.5	-	@229	-	-3.0 / 50	ILS
040	CA	-	-	002°(001.1°)	+0.9	-	-	+3700	-	-	RNAV 1
050	DF	VEGTO (IAF)	-	-	+0.9	-	L	+5200	-210	-	RNAV 1
060	HM	VEGTO (IAF)	Y	168°(167.0°)	+0.9	1 minute	R	+5200	-230	-	RNAV 1

**WAYPOINT LIST**

ILS or LOC RWY36		
Waypoint Identifier	Coordinates	
VEGTO	17° 21' 33.09" N	099° 36' 53.92" E
ATPAT	17° 02' 13.61" N	099° 41' 32.84" E
IGEMU	17° 27' 13.10" N	099° 57' 44.02" E
GOSRU	17° 01' 57.14" N	099° 56' 09.39" E
KIMET	16° 49' 27.60" N	099° 44' 29.32" E
VASBI	17° 02' 05.51" N	099° 48' 51.12" E
PO101	17° 07' 10.05" N	099° 48' 57.31" E
PO102 (THR36)	17° 13' 41.56" N	099° 49' 05.27" E

**INSTRUMENT AERODROME ELEV 179 FT**  
**APPROACH HEIGHTS RELATED TO**  
**CHART-ICAO THR RWY36 - ELEV 179 FT**

**SUKHOTHAI/Sukhothai (VTPO)**  
**ILS or LOC RWY36**

Fix / Point		Coordinates	
VASBI (IF)	12.9 D ISKT	17 02 05.51 N	099 48 51.12 E
PO101 (FAF)	7.8 D ISKT	17 07 10.05 N	099 48 57.31 E
MAPt (LOC only) @ THR RWY36	1.3 D ISKT	17 13 41.56 N	099 49 05.27 E
LOC/DME	ISKT	17 14 58.01 N	099 49 06.83 E
GP	ISKT	17 13 51.07 N	099 49 02.08 E

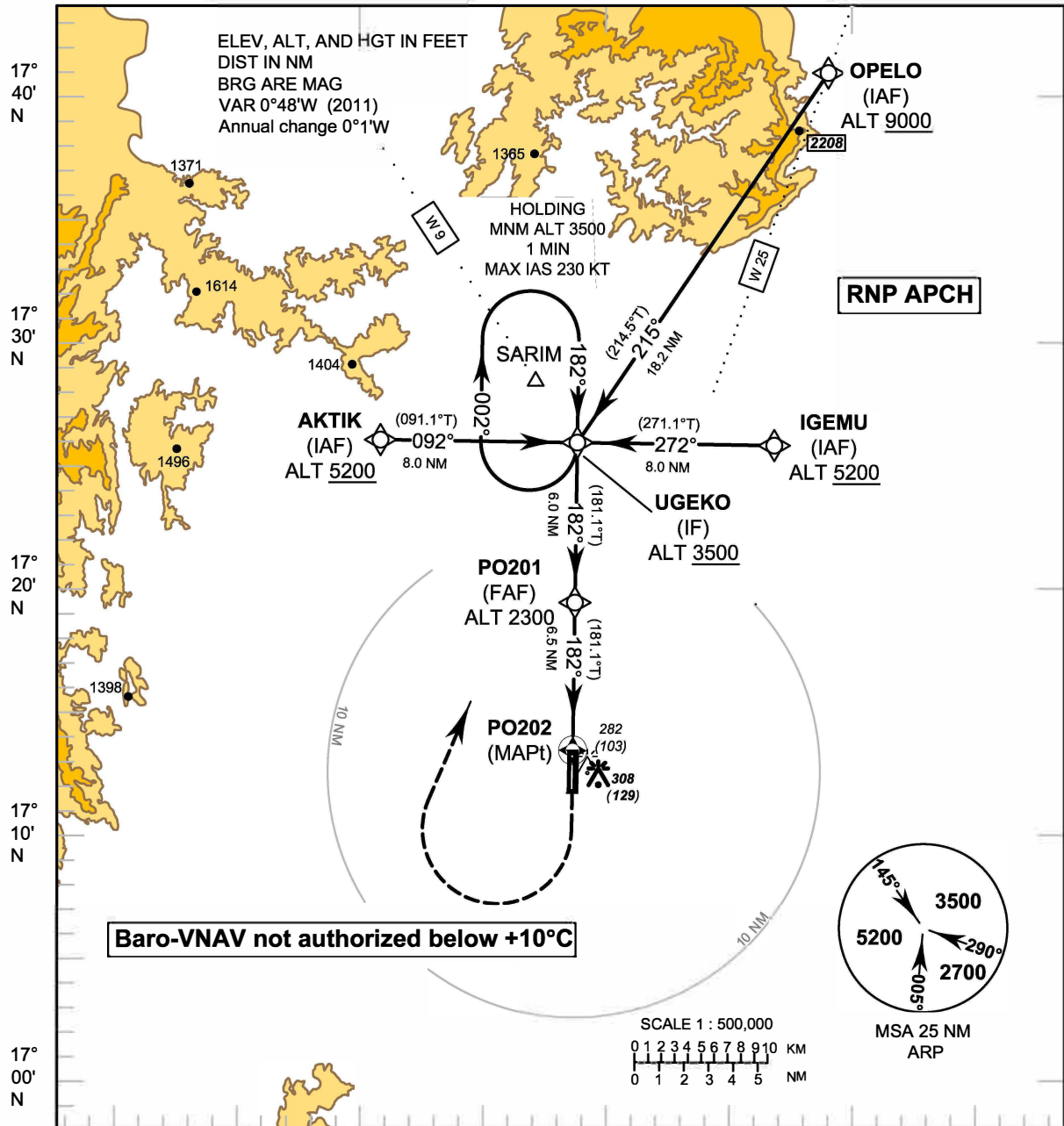
**INTENTIONALLY BLANK**



**INSTRUMENT AERODROME ELEV 179 FT**  
**APPROACH HEIGHTS RELATED TO**  
**CHART-ICAO AERODROME ELEV**

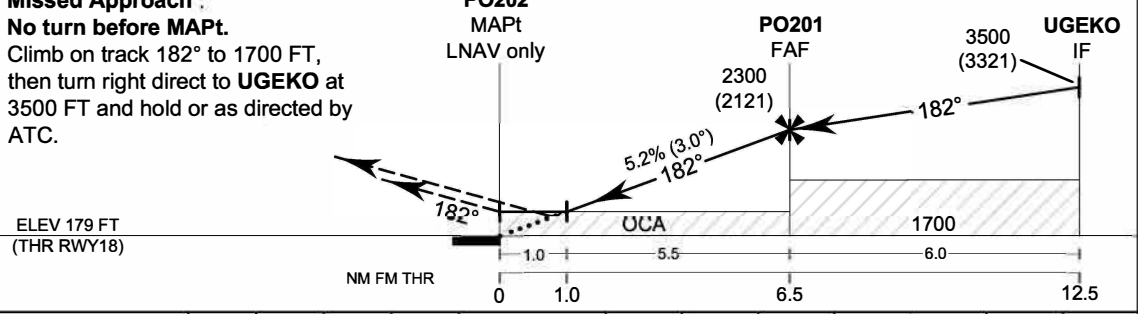
APP : 120.7  
TWR : 122.9

**SUKHOTHAI/Sukhothai (VTPO)**  
**RNP RWY18**



099° 30' E      099° 40' E      099° 50' E      100° 00' E

**Missed Approach :**  
**No turn before MAPt.**  
Climb on track 182° to 1700 FT,  
then turn right direct to **UGEKO** at  
3500 FT and hold or as directed by  
ATC.



OCA/H	A	B	C	D	NM to NEXT WPT	1 NM	2 NM	3 NM	4 NM	5 NM	6 NM	FAF
LNAV/VNAV	450 (271)				Altitude (Height)	560 (381)	860 (681)	1175 (996)	1495 (1316)	1810 (1631)	2125 (1946)	2300 (2121)
LNAV	560 (381)				Ground Speed	knot	70	90	100	120	140	160
Circling (OCH AAL)	790 (611)	890 (711)		Rate of descent FAF-MAPt (5.2%)	(ft/min)	369	474	527	632	737	843	

CHANGE: CHART TITLE.

INSTRUMENT AERODROME ELEV 179 FT  
APPROACH HEIGHTS RELATED TO  
CHART-ICAO AERODROME ELEV

SUKHOTHAI/Sukhothai (VTPO)  
RNP RWY18

**TABULAR DESCRIPTION**

RNP RWY18											
Serial	Path	Waypoint Identifier	Flyover	Course	Magnetic	Distance	Turn	Altitude	Speed	VPA/	Navigation
Number	Descriptor			° M (° T)	Variation	(NM)	Direction	(FT)	(KT)	TCH	Specification
010	IF	OPELO (IAF)	-	-	+0.9	-	-	+9000	-	-	RNP APCH
020	TF	UGEKO (IF)	-	215°(214.5°)	+0.9	18.2	-	+3500	-	-	RNP APCH
010	IF	IGEMU (IAF)	-	-	+0.9	-	-	+5200	-	-	RNP APCH
020	TF	UGEKO (IF)	-	272°(271.1°)	+0.9	8.0	-	+3500	-	-	RNP APCH
010	IF	AKTIK (IAF)	-	-	+0.9	-	-	+5200	-	-	RNP APCH
020	TF	UGEKO (IF)	-	092°(091.1°)	+0.9	8.0	-	+3500	-	-	RNP APCH
010	IF	UGEKO (IF)	-	-	+0.9	-	-	+3500	-	-	RNP APCH
020	TF	PO201 (FAF)	-	182°(181.1°)	+0.9	6.0	-	@2300	-	-	RNP APCH
030	TF	PO202 (MAPt)	Y	182°(181.1°)	+0.9	6.5	-	@229	-	-3.0 / 50	RNP APCH
040	CA	-	-	182°(181.1°)	+0.9	-	-	+1700	-	-	RNP APCH
050	DF	UGEKO (IF)	-	-	+0.9	-	R	+3500	-	-	RNP APCH
060	HM	UGEKO (IF)	Y	182°(181.1°)	+0.9	1 minute	R	+3500	-230	-	RNP APCH

**WAYPOINT LIST**

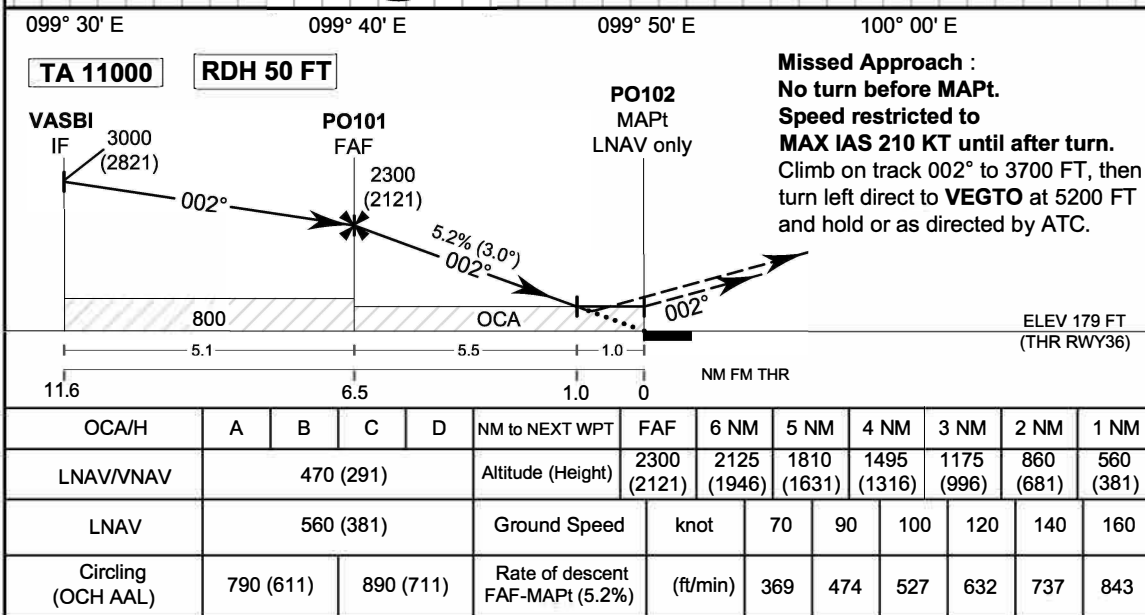
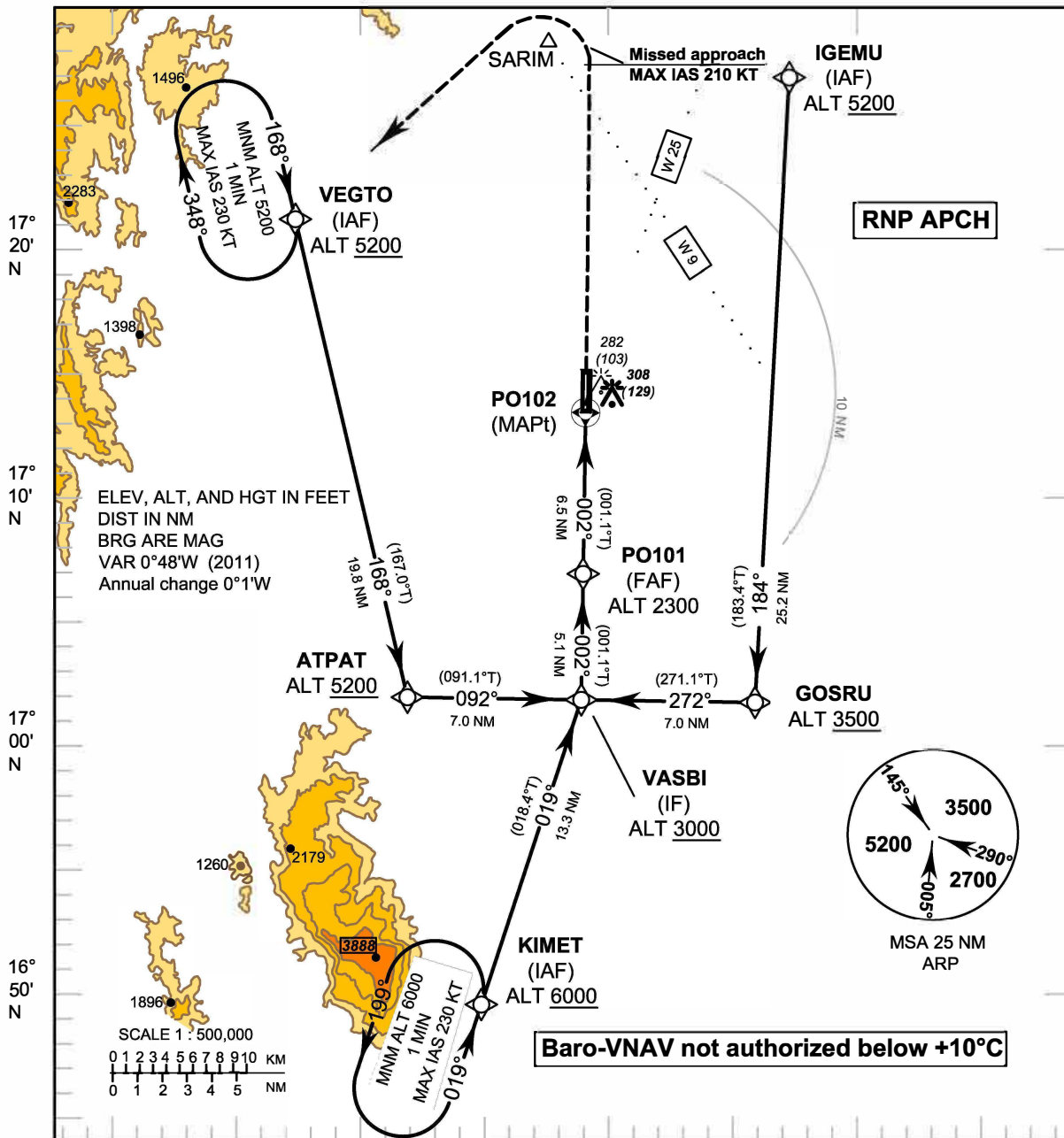
RNP RWY18		
Waypoint Identifier	Coordinates	
OPELO	17° 42' 24.27" N	100° 00' 07.57" E
AKTIK	17° 27' 31.99" N	099° 40' 59.98" E
IGEMU	17° 27' 13.10" N	099° 57' 44.02" E
UGEKO	17° 27' 22.72" N	099° 49' 22.01" E
PO201	17° 21' 21.34" N	099° 49' 14.64" E
PO202 (THR18)	17° 14' 49.87" N	099° 49' 06.66" E

CHANGE: CHART TITLE.

**INSTRUMENT AERODROME ELEV 179 FT**  
**APPROACH HEIGHTS RELATED TO**  
**CHART-ICAO AERODROME ELEV**

APP : 120.7  
TWR : 122.9

**SUKHOTHAI/Sukhothai (VTPO)**  
**RNP RWY36**



**INSTRUMENT AERODROME ELEV 179 FT**  
**APPROACH HEIGHTS RELATED TO**  
**CHART-ICAO AERODROME ELEV**

**SUKHOTHAI/Sukhothai (VTPO)**  
**RNP RWY36**

**TABULAR DESCRIPTION**

RNP RWY36											
Serial	Path	Waypoint Identifier	Flyover	Course	Magnetic	Distance	Turn	Altitude	Speed	VPA/	Navigation
Number	Descriptor			° M (° T)	Variation	(NM)	Direction	(FT)	(KT)	TCH	Specification
010	IF	VEGTO (IAF)	-	-	+0.9	-	-	+5200	-	-	RNP APCH
020	TF	ATPAT	-	168°(167.0°)	+0.9	19.8	L	+5200	-	-	RNP APCH
030	TF	VASBI (IF)	-	092°(091.1°)	+0.9	7.0	-	+3000	-	-	RNP APCH
010	IF	IGEMU (IAF)	-	-	+0.9	-	-	+5200	-	-	RNP APCH
020	TF	GOSRU	-	184°(183.4°)	+0.9	25.2	R	+3500	-	-	RNP APCH
030	TF	VASBI (IF)	-	272°(271.1°)	+0.9	7.0	-	+3000	-	-	RNP APCH
010	IF	KIMET (IAF)	-	-	+0.9	-	-	+6000	-	-	RNP APCH
020	TF	VASBI (IF)	-	019°(018.4°)	+0.9	13.3	-	+3000	-	-	RNP APCH
010	IF	VASBI (IF)	-	-	+0.9	-	-	+3000	-	-	RNP APCH
020	TF	PO101 (FAF)	-	002°(001.1°)	+0.9	5.1	-	@2300	-	-	RNP APCH
030	TF	PO102 (MAPt)	Y	002°(001.1°)	+0.9	6.5	-	@229	-	- 3.0 / 50	RNP APCH
040	CA	-	-	002°(001.1°)	+0.9	-	-	+3700	-	-	RNP APCH
050	DF	VEGTO (IAF)	-	-	+0.9	-	L	+5200	-210	-	RNP APCH
060	HM	VEGTO (IAF)	Y	168°(167.0°)	+0.9	1 minute	R	+5200	-230	-	RNP APCH

**WAYPOINT LIST**

RNP RWY36		
Waypoint Identifier	Coordinates	
VEGTO	17° 21' 33.09" N	099° 36' 53.92" E
ATPAT	17° 02' 13.61" N	099° 41' 32.84" E
IGEMU	17° 27' 13.10" N	099° 57' 44.02" E
GOSRU	17° 01' 57.14" N	099° 56' 09.39" E
KIMET	16° 49' 27.60" N	099° 44' 29.32" E
VASBI	17° 02' 05.51" N	099° 48' 51.12" E
PO101	17° 07' 10.05" N	099° 48' 57.31" E
PO102 (THR36)	17° 13' 41.56" N	099° 49' 05.27" E

CHANGE: CHART TITLE.