

VTCL AD 2.1 AERODROME LOCATION INDICATOR AND NAME

VTCL - LAMPANG / LAMPANG AIRPORT

VTCL AD 2.2 AERODROME GEOGRAPHICAL AND ADMINISTRATIVE DATA

1	ARP coordinates and site at AD	181619.62N 0993014.62E
2	Direction and distance from (city)	2 KM, S from city
3	Elevation/Reference temperature	811 FT/37°C
4	Geoid Undulation at AD ELEV PSN	NIL
5	MAG VAR/Annual change	0°47'W (2016) / 0°0'E
6	AD Administration, address, telephone, telefax, telex, AFS	Director of Lampang Airport Lampang Airport 175 Thanon Sanambin 1, Tambon Phrabaht Amphoe Muang Lampang Province 52000 Thailand Tel: +665 482 1505 Fax: +665 482 1509 AFS: VTCLYDYX
7	Types of traffic permitted (IFR/VFR)	IFR/VFR
8	Remarks	Operator: Department of Airports

VTCL AD 2.3 OPERATIONAL HOURS

1	Aerodrome Operator	0030-1230
2	Customs and immigration	NIL
3	Health and sanitation	NIL
4	AIS Briefing Office	NIL
5	ATS Reporting Office (ARO)	0030-1230
6	MET Briefing Office	NIL
7	ATS	0030-1230
8	Fuelling	NIL
9	Handling	NIL
10	Security	NIL
11	De-icing	NIL
12	Remarks	ATS Reporting Office (ARO): Located at Chiang Mai Air Traffic Control Centre (1st floor of tower building) Tel: +669 1818 5798 Fax: +665 327 7897

VTCL AD 2.4 HANDLING SERVICES AND FACILITIES

1	Cargo-handling facilities	NIL
2	Fuel/oil types	NIL
3	Fuelling facilities/capacity	NIL
4	De-icing facilities	NIL
5	Hangar space for visiting aircraft	NIL
6	Repair facilities for visiting aircraft	NIL
7	Remarks	NIL

VTCL AD 2.5 PASSENGER FACILITIES

1	Hotels	In the city
2	Restaurants	In the city
3	Transportation	NIL
4	Medical facilities	NIL
5	Bank and Post Office	NIL
6	Tourist Office	NIL
7	Remarks	NIL

VTCL AD 2.6 RESCUE AND FIRE FIGHTING SERVICES

1	AD category for fire fighting	Category 5
2	Rescue equipment	Yes
3	Capability for removal of disabled aircraft	NIL
4	Remarks	NIL

VTCL AD 2.7 SEASONAL AVAILABILITY - CLEARING

1	Types of clearing equipment	NIL
2	Clearance priorities	NIL
3	Remarks	The aerodrome is available all seasons.

VTCL AD 2.8 APRONS, TAXIWAYS AND CHECK LOCATIONS/POSITIONS DATA

1	Apron surface and strength	Surface: Concrete Strength: PCN 41/R/C/X/T
2	Taxiway width, surface and strength	Width: 23 M Surface: Asphalt Strength PCN 41/F/C/X/T
3	Altimeter checkpoint location and elevation	NIL
4	VOR checkpoints	NIL
5	INS checkpoints	NIL
6	Remarks	NIL

VTCL AD 2.9 SURFACE MOVEMENT GUIDANCE AND CONTROL SYSTEM AND MARKINGS

1	Use of aircraft stand ID signs, TWY guide lines and visual docking/parking guidance system of aircraft stands	NIL
2	RWY and TWY markings and LGT	NIL
3	Stop bars	NIL
4	Remarks	NIL

VTCL AD 2.10 AERODROME OBSTACLES

In approach/TKOF areas			In circling areas and at AD		Remarks
1			2		3
RWY/Area affected	Obstacle type Elevation Markings/LGT	Coordinates	Obstacle type Elevation Markings/LGT	Coordinates	
a	b	c	a	b	
-	Gymnasium building HGT 19 M Dist 616 M from THR RWY 18 LGTD on top	181709N 0993013E	Radio mast HGT 12 M Painted red/white LGTD on top.	181522.8N 0993210.2E	NIL

VTCL AD 2.11 METEOROLOGICAL INFORMATION PROVIDED

1	Associated MET Office	Aeronautical Meteorological Station-Lampang, Northern Meteorological Center, Thai Meteorological Department (TMD)
2	Hours of service MET Office outside hours	2300-1200 NIL
3	Office responsible for TAF preparation Periods of validity	Supply TAF from Northern Meteorological Center 24 HR
4	Type of landing forecast Interval of issuance	TREND 1 HR
5	Briefing/consultation provided	Personal Consultation Tel: +665 482 1517 Fax: +665 431 5788
6	Flight documentation Language(s) used	NIL
7	Charts and other information available for briefing or consultation	S, U85, Daily Weather Forecast, satellite and radar images
8	Supplementary equipment available for providing information	Automated Weather Observation System (AWOS)
9	ATS units provided with information	Lampang TWR
10	Additional information (limitation of service, etc.)	NIL

VTCL AD 2.12 RUNWAY PHYSICAL CHARACTERISTICS

Designations RWY NR	TRUE BRG	Dimensions of RWY(M)	Strength (PCN) and surface of RWY and SWY	THR coordinates RWY end coordinates THR geoid undulation	THR elevation and highest elevation of TDZ of precision APP RWY
1	2	3	4	5	6
18	175.27°	1975x30	PCN 41/F/C/X/T Asphalt	181641.91N 0993012.76E	THR 789 FT TDZ 797 FT
36	355.27°	1975x30	PCN 41/F/C/X/T Asphalt	181547.58N 0993017.31E	THR 811FT TDZ 811 FT

Slope of RWY-SWY	SWY dimensions (M)	CWY dimensions (M)	Strip dimensions (M)	OFZ	Remarks
7	8	9	10	11	12
NIL	NIL	NIL	2135x106	NIL	NIL
NIL	60x30	NIL	2135x106	NIL	NIL

VTCL AD 2.13 DECLARED DISTANCES

RWY Designator	TORA (M)	TODA (M)	ASDA (M)	LDA (M)	Remarks
1	2	3	4	5	6
18	1875	1875	1975	1775	NIL
36	1775	1775	2035	1875	NIL

VTCL AD 2.14 APPROACH AND RUNWAY LIGHTING

RWY Designator	APCH LGT type LEN INTST	THR LGT colour WBAR	VASIS (MEHT) PAPI	TDZ, LGT LEN	RWY Centre Line LGT Length, spacing, colour, INTST	RWY edge LGT LEN, spacing, colour INTST	RWY End LGT colour WBAR	SWY LGT LEN (M) colour	Remarks
1	2	3	4	5	6	7	8	9	10
18	NIL	Green	PAPI Left 3° (15.72 M)	NIL	NIL	1750 M 60 M White, LIH	Red	NIL	NIL
36	RTIL	Green	PAPI Left 3° (15.72 M)	NIL	NIL	1750 M 60 M White, LIH	Red	NIL	NIL

VTCL AD 2.15 OTHER LIGHTING, SECONDARY POWER SUPPLY

1	ABN/IBN location, characteristics and hours of operation	ABN: At ATC Tower (181634.90N 0993020.76E), FLG W G EV 7 SEC..
2	LDI location and LGT Anemometer location and LGT	NIL
3	TWY edge and centre line lighting	EDGE: All taxiways
4	Secondary power supply/switch-over time	Secondary power supply to all lighting at the airport. Switch-over time 15 SEC
5	Remarks	NIL

VTCL AD 2.16 HELICOPTER LANDING AREA

1	Coordinates TLOF or THR of FATO Geoid undulation	NIL
2	TLOF and/or FATO elevation M/FT	NIL
3	TLOF and FATO area dimensions, surface, strength, marking	NIL
4	True and MAG BRG of FATO	NIL
5	Declared distance available	NIL
6	APP and FATO lighting	NIL
7	Remarks	NIL

VTCL AD 2.17 ATS AIRSPACE

1	Designation and lateral limits	A circle of 5 NM radius centred on LPN DVOR/DME (181635.87N 0993008.40E)
2	Vertical limits	2000 FT/AGL
3	Airspace classification	D
4	ATS unit call sign Language(s)	Lampang Tower English, Thai
5	Transition altitude	11000 FT
6	Remarks	NIL

VTCL AD 2.18 ATS COMMUNICATION FACILITIES

Service designation	Call sign	Frequency	Hours of operation	Remarks
1	2	3	4	5
APP	Lampang Approach	119.3 MHZ 121.5 MHZ ¹⁾	As AD OPR HR	¹⁾ Emergency frequency
TWR	Lampang Tower	122.3 MHZ 236.6 MHZ 121.5 MHZ ¹⁾	As AD OPR HR	
ATIS	Lampang Airport	395 KHZ	As AD OPR HR	

VTCL AD 2.19 RADIO NAVIGATION AND LANDING AIDS

Type of aid, MAG VAR CAT of ILS/MLS (For VOR/ILS/ MLS, give VAR)	ID	Frequency	Hours of operation	Position of transmitting antenna coordinates	Elevation of DME transmitting antenna	Remarks
1	2	3	4	5	6	7
NDB	LP	395 KHZ	H24	181640.88N 0993026.88E		Coverage 25 NM clockwise orbit data refer from commissioning checked as follows: - Bearing 001°-360° at altitude 5 500 FT
DVOR/DME	LPN	114.7 MHZ CH94X	H24	181635.87N 0993008.40E		DVOR/DME restriction due to Terrain surround DVOR/DME station, coverage check does not provide adequate signal to 40 NM at required altitudes in various areas as follows: - Radial 351°-070° beyond 40 NM should not below 6 000 FT - Radial 071°-130° beyond 30 NM should not below 6 000 FT - Radial 131°-320° beyond 40 NM should not below 6 000 FT - Radial 321°-350° beyond 30 NM should not below 6 000 FT
LOC RWY 36	I-LPN	109.7 MHZ	H24	181651.63N 0993011.99E	782.58 FT	LOC: Designated operation coverage 18 NM, ALT 7000 FT AMSL
DME		CH34X (109.7 MHZ)	H24	181651.86N 0993014.43E		DME: Paired with LOC Freq. GP: Not installation

VTCL AD 2.20 LOCAL AERODROME REGULATIONS

NIL

VTCL AD 2.21 NOISE ABATEMENT PROCEDURES

NIL

VTCL AD 2.22 FLIGHT PROCEDURES

NIL

VTCL AD 2.23 ADDITIONAL INFORMATION

1. BIRD CONCENTRATIONS

- Bird concentrations in the vicinity of an aerodrome.

Type of birds: Red-wattled, Starling, Coucals, Bat, Dove, Tailorbird, Heron and Martin.

Bird weight: From 0.02 - 0.375 KG.

Max. flock size: 15 birds.

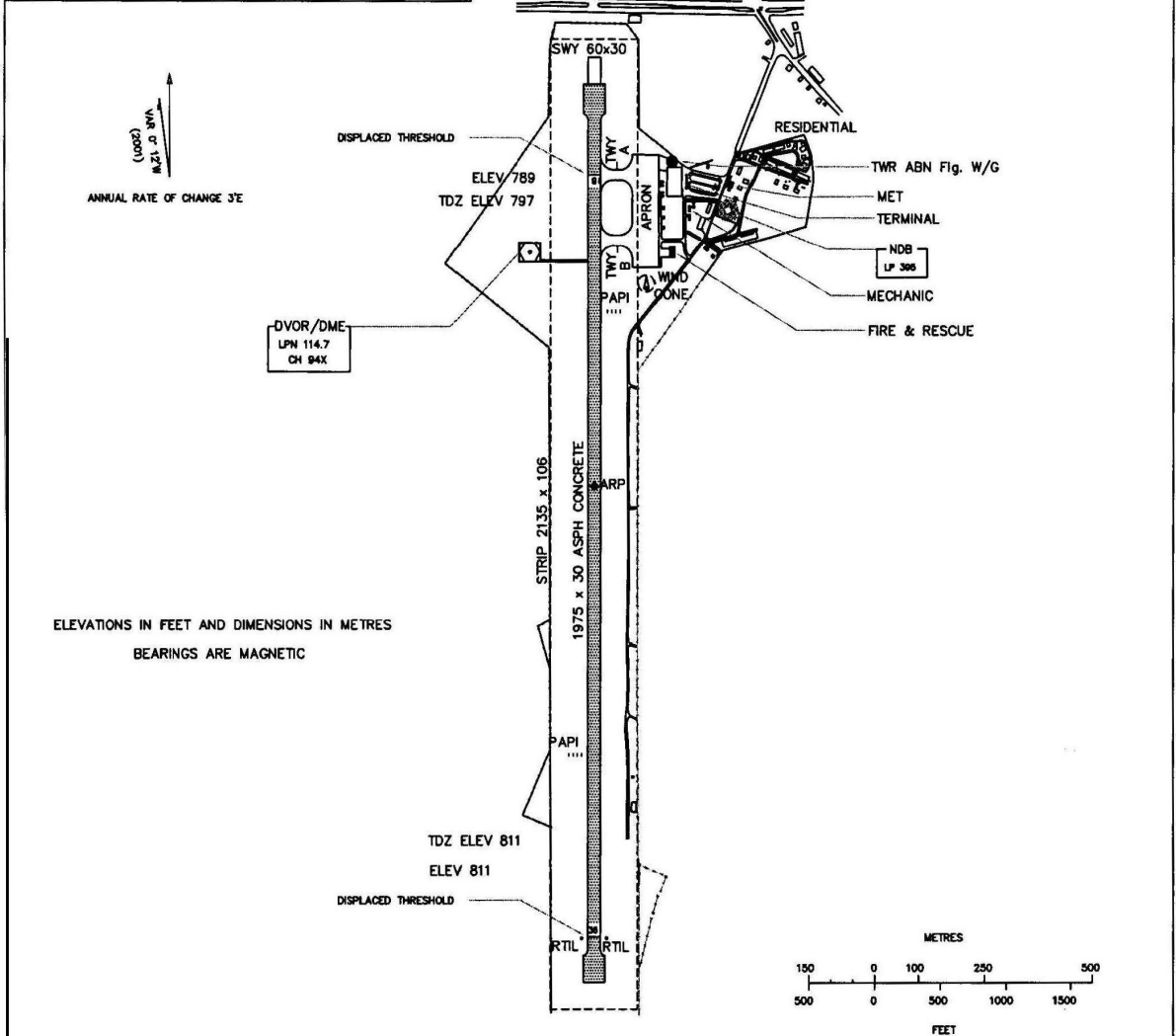
VTCL AD 2.24 CHARTS RELATED TO AN AERODROME

Chart name	Page
Aerodrome Chart - ICAO	AD 2-VTCL-2-1
Standard Departure Chart - Instrument (SID) - ICAO - RWY 18	AD 2-VTCL-6-1
Standard Departure Chart - Instrument (SID) - ICAO - RWY 36	AD 2-VTCL-6-3
Standard Departure Chart - Instrument (SID) - ICAO - RNAV RWY 18 - JUMKA1A MARWA1A PAMOK1A SAMAI1A WANSA1A	AD 2-VTCL-6-5
Standard Departure Chart - Instrument (SID) - ICAO - RNAV RWY 18 - JUMKA1A MARWA1A PAMOK1A SAMAI1A WANSA1A (Tabular description)	AD 2-VTCL-6-6
Standard Departure Chart - Instrument (SID) - ICAO - RNAV RWY 36 - MARBO1A PAHIN1A PHATA1A TOHAN1A	AD 2-VTCL-6-7
Standard Departure Chart - Instrument (SID) - ICAO - RNAV RWY 36 - MARBO1A PAHIN1A PHATA1A TOHAN1A (Tabular description)	AD 2-VTCL-6-8
Instrument Approach Chart - ICAO - VOR RWY 18	AD 2-VTCL-8-1
Instrument Approach Chart - ICAO - VOR RWY 18 (Fix and point list table)	AD 2-VTCL-8-2
Instrument Approach Chart - ICAO - VOR RWY 36	AD 2-VTCL-8-3
Instrument Approach Chart - ICAO - VOR RWY 36 (Fix and point list table)	AD 2-VTCL-8-4
Instrument Approach Chart - ICAO - LOC RWY 36	AD 2-VTCL-8-5
Instrument Approach Chart - ICAO - LOC RWY 36 (Fix and point list table)	AD 2-VTCL-8-6
Instrument Approach Chart - ICAO - RNP RWY 18	AD 2-VTCL-8-7
Instrument Approach Chart - ICAO - RNP RWY 18 (Tabular description)	AD 2-VTCL-8-8
Instrument Approach Chart - ICAO - RNP RWY 36	AD 2-VTCL-8-9
Instrument Approach Chart - ICAO - RNP RWY 36 (Tabular description)	AD 2-VTCL-8-10

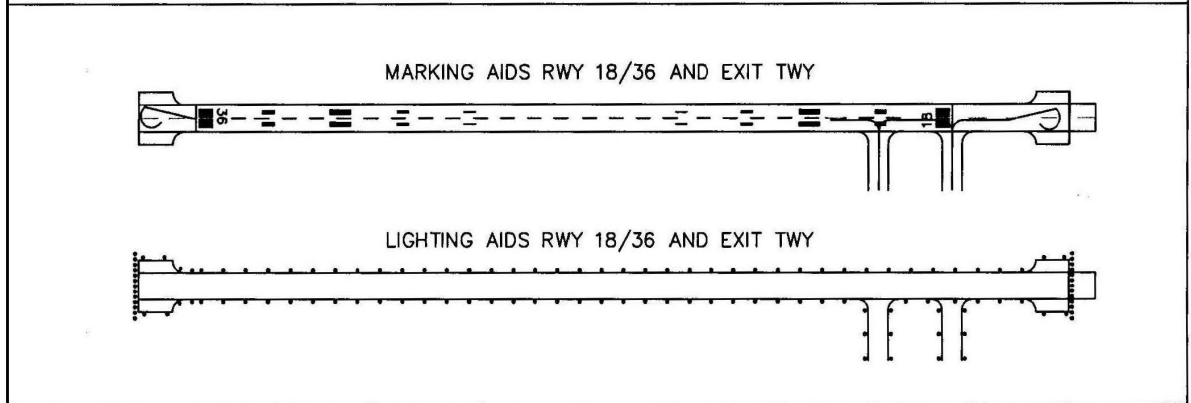
INTENTIONALLY BLANK

AERODROME CHART-ICAO 18° 16' 20" N ELEV 811 ft TWR 122.3
 99° 30' 15" E 247 m 236.6 LAMPANG/Lampang

RWY	DIRECTION	THR	BEARING STRENGTH
18	175°	18° 16' 41.91" N 99° 30' 12.76" E	PCN 41/F/C/X/T
36	355°	18° 15' 47.58" N 99° 30' 17.31" E	
APRON			PCN 41/R/C/X/T



Remark : COORDINATE ARE WGS-84



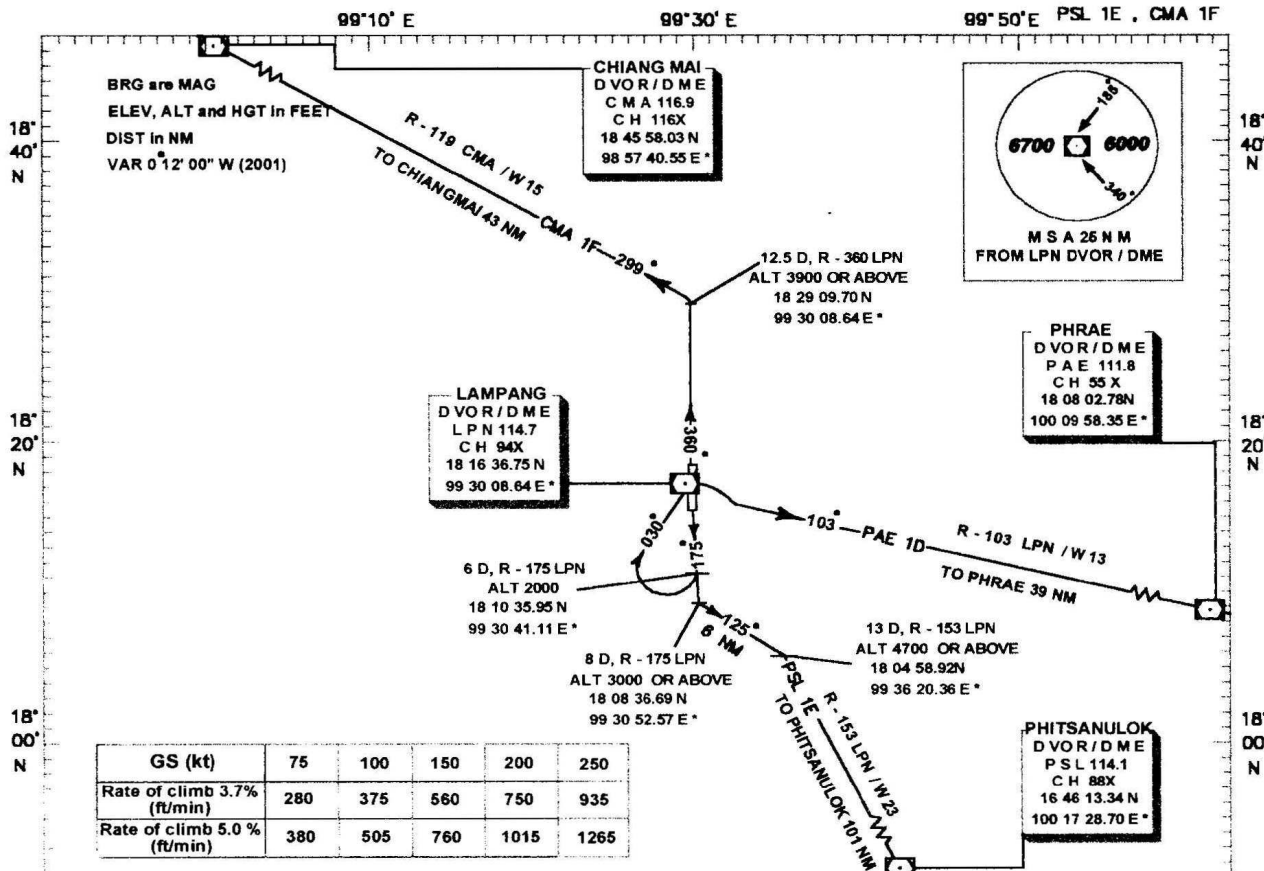
INTENTIONALLY BLANK

**STANDARD DEPARTURE CHART
INSTRUMENT (SID) - ICAO**

TRANSITION ALTITUDE
11 000 ft

APP 119.3
TWR 122.3, 236.6

LAMPANG/Lampang
RWY 18
PAE 1D



- PHRAE ONE DELTA (PAE 1D)** – **MINIMUM DESIGN CLIMB GRADIENT 3.7%**
- AFTER DEPARTURE CLIMB ON TRACK-175° MAG UNTIL REACHING ALT 2000 FEET OR ABOVE W/ 6 DME
 - TURN RIGHT AND TRACK-030° MAG TO LPN DVOR/DME
 - LEAVE LPN DVOR/DME TURN RIGHT CLIMB ON R-103 LPN FOR ALT 11000 FEET TO PAE DVOR/DME
- PHITSANULOK ONE ECHO (PSL 1E)** – **MINIMUM DESIGN CLIMB GRADIENT 5.0%**
- AFTER DEPARTURE CLIMB ON TRACK-175° MAG UNTIL REACHING ALT 3000 FEET OR ABOVE W/ 8 DME
 - TURN LEFT CLIMB ON TRACK-125° MAG TO INTERCEPT R-153 LPN ALT 4700 FEET OR ABOVE W/ 13 DME AND PROCEED ON R-153 LPN FOR ALT 11000 FT TO PSL DVOR/DME
- CHIANG MAI ONE FOXTROT (CMA 1F)** – **MINIMUM DESIGN CLIMB GRADIENT 3.7%**
- AFTER DEPARTURE CLIMB ON TRACK-175° MAG UNTIL REACHING ALT 2000 FEET OR ABOVE W/ 6 DME
 - TURN RIGHT AND TRACK-030° MAG TO LPN DVOR/DME
 - LEAVE LPN DVOR/DME TURN LEFT CLIMB ON TRACK-360° MAG TO INTERCEPT TRACK-299° MAG W/ 12.5 DME AND PROCEED ON TRACK-299° MAG (R-119 CMA) FOR 11000 FT TO CMA DVOR/DME

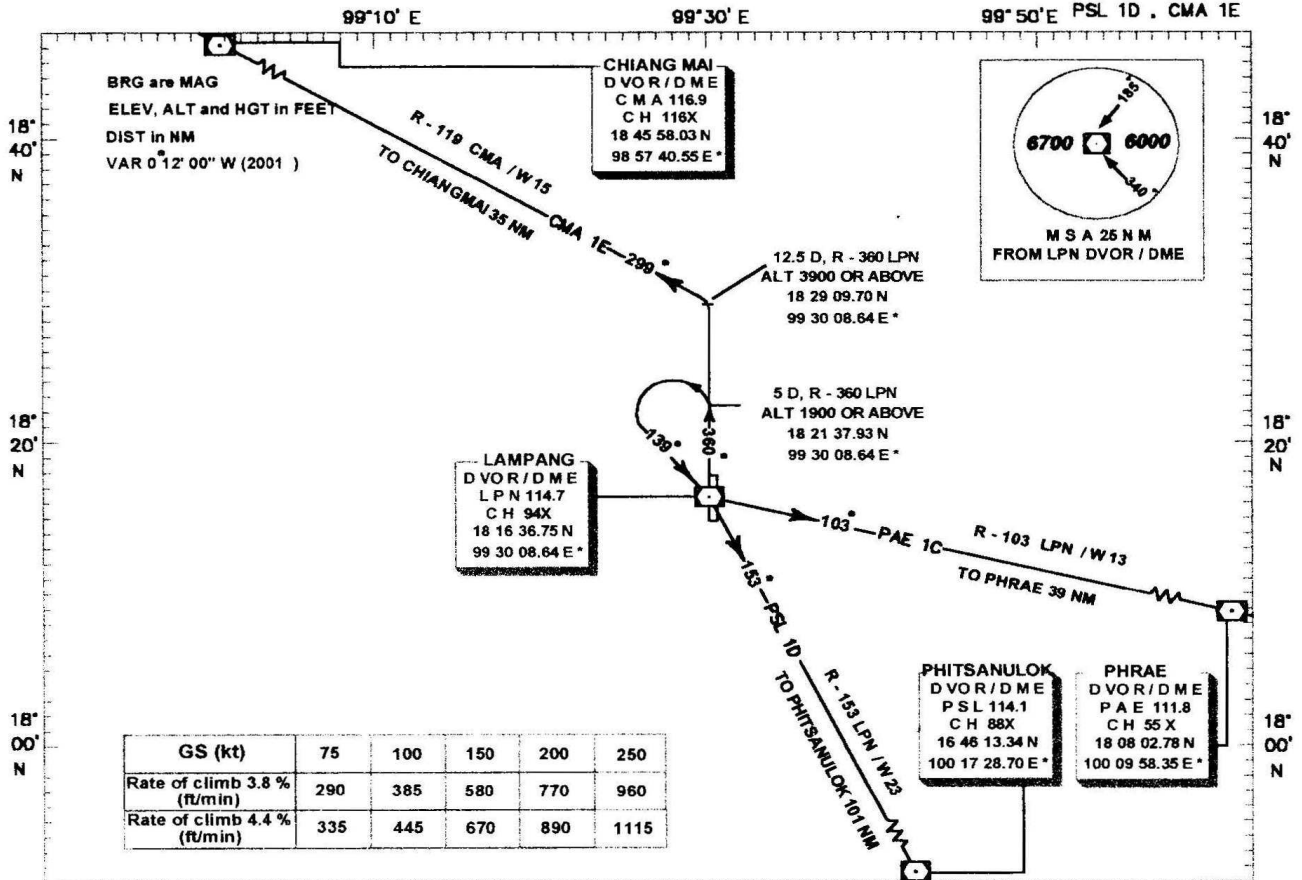
INTENTIONALLY BLANK

STANDARD DEPARTURE CHART
INSTRUMENT (SID) - ICAO

TRANSITION ALTITUDE
11000 ft

APP 119.3
TWR 122.3, 236.6

LAMPANG/Lampang
RWY 36
PAE 1C



PHRAE ONE CHARLIE
(PAE 1C)

- MINIMUM DESIGN CLIMB GRADIENT 3.8 %
- AFTER DEPARTURE CLIMB ON TRACK-360° MAG UNTIL REACHING ALT 1900 FEET OR ABOVE W 5 DME
- TURN LEFT AND TRACK-139° MAG TO LPN DVOR/DME
- LEAVE LPN DVOR/DME TURN LEFT CLIMB ON R-103 LPN FOR ALT 11000 FEET TO PAE DVOR/DME

PHITSANULOK ONE DELTA
(PSL 1D)

- MINIMUM DESIGN CLIMB GRADIENT 3.8 %
- AFTER DEPARTURE CLIMB ON TRACK-360° MAG UNTIL REACHING ALT 1900 FEET OR ABOVE W 5 DME
- TURN LEFT AND TRACK-139° MAG TO LPN DVOR/DME
- LEAVE LPN DVOR/DME TURN RIGHT CLIMB ON R-153 LPN FOR ALT 11000 FT TO PSL DVOR/DME

CHIANG MAI ONE ECHO
(CMA 1E)

- MINIMUM DESIGN CLIMB GRADIENT 3.8 % UNTIL ALT 1900 FEET OR ABOVE W 5 DME THEN 4.4 %
- AFTER DEPARTURE CLIMB ON TRACK-360° MAG UNTIL REACHING ALT 1900 FEET OR ABOVE W 5 DME
- CONTINUING CLIMB ON TRACK-360° MAG TO INTERCEPT TRACK-299° MAG W 12.5 DME AND PROCEED ON TRACK-360° MAG (R-119 CMA) FOR 11000 FT TO CMA DVOR/DME

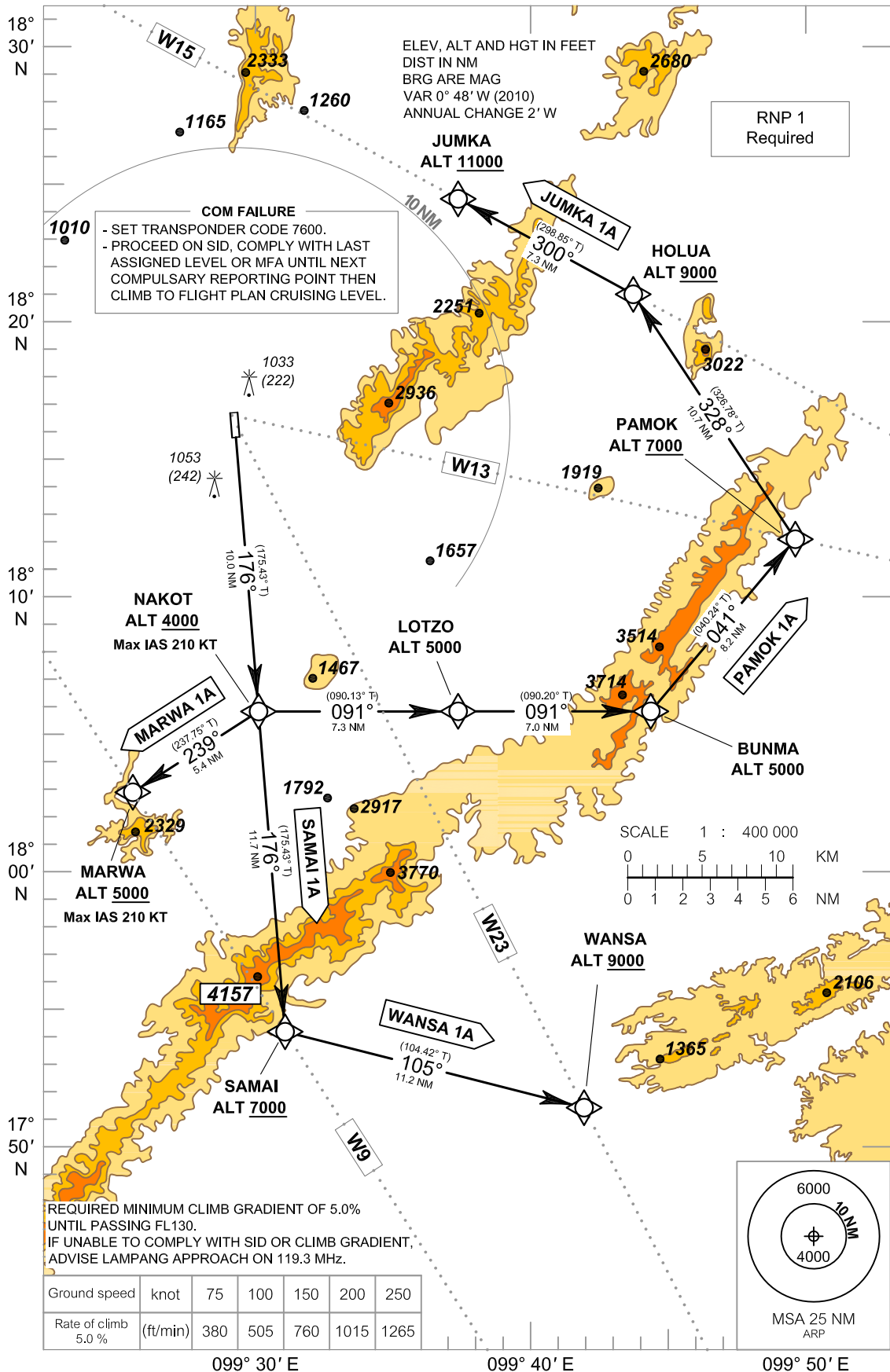
INTENTIONALLY BLANK

**STANDARD DEPARTURE CHART -
INSTRUMENT (SID) - ICAO**

APP : 119.3
TWR : 122.3 , 236.6

**LAMPANG / Lampang (VTCL)
RNAV RWY18**

**JUMKA 1A MARWA 1A
PAMOK 1A SAMAI 1A WANSA 1A**



**STANDARD DEPARTURE CHART -
INSTRUMENT (SID) - ICAO**

APP : 119.3
TWR : 122.3 , 236.6

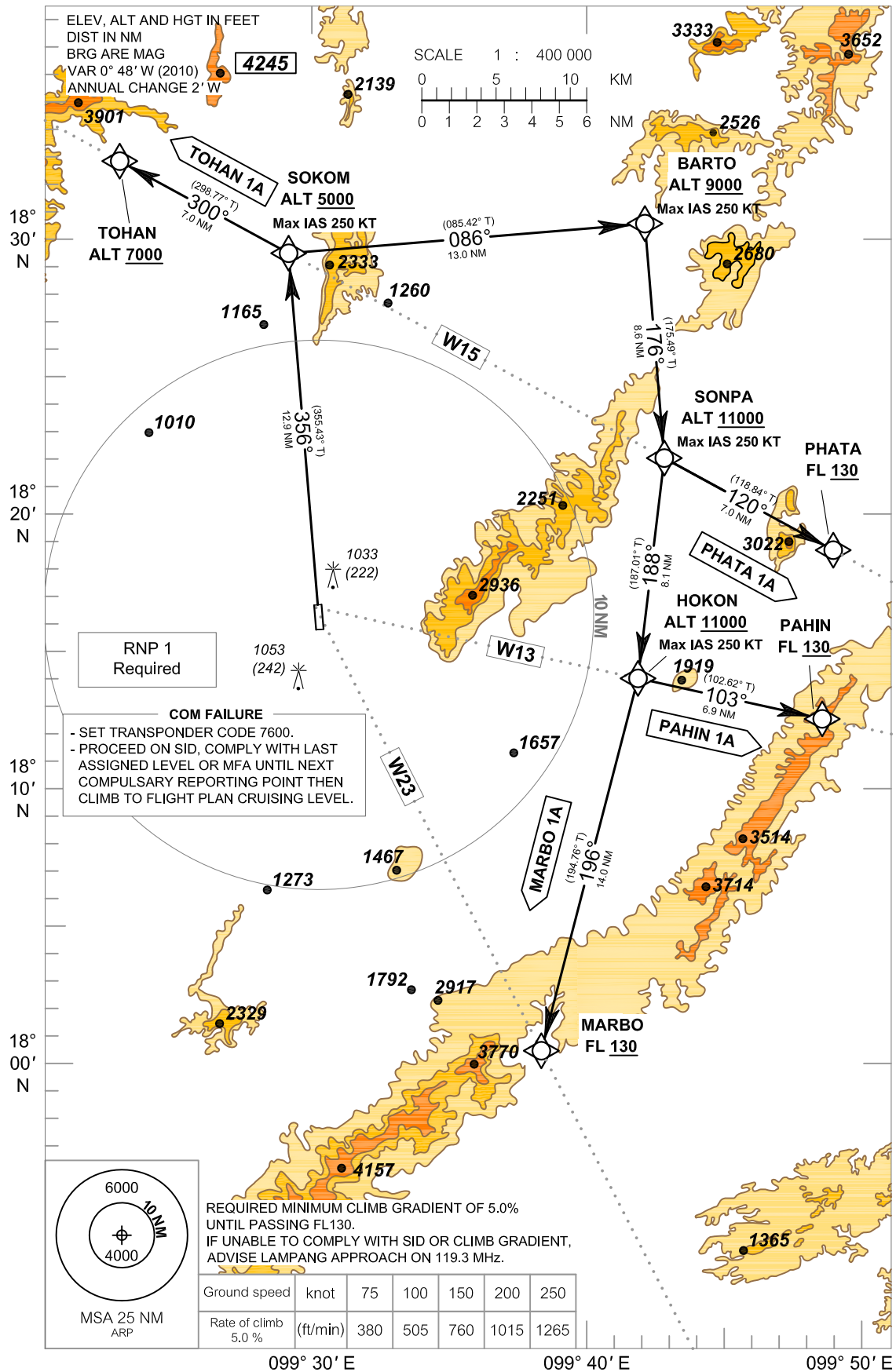
**LAMPANG / Lampang (VTCL)
RNAV RWY18
JUMKA 1A MARWA 1A
PAMOK 1A SAMAI 1A WANSA 1A**

Serial Number	Path Descriptor	Waypoint Identifier	WGS-84 Coordinates			Flyover	Course	Magnetic	Distance	Turn	Altitude	Speed	VPA/	Navigation	
			Latitude	Longitude	° M (° T)		Variation	(NM)	Direction	(FT)	(KT)	TCH	Specification		
001	-	DER RWY18	181547.63	N	0993017.35	E	-	0.9	-	-	-	-	-	RNP1	
002	CF	NAKOT	180546.72	N	0993107.58	E	-	176°(175.43°)	0.9	10.0	L, R	4000+	210	-	RNP1
003	TF	MARWA	180251.96	N	0992618.09	E	-	239°(237.75°)	0.9	5.4	-	5000+	210	-	RNP1
004	TF	LOTZO	180545.58	N	0993844.63	E	-	091°(090.13°)	0.9	7.3	-	5000	-	-	RNP1
005	TF	BUNMA	180543.96	N	0994605.70	E	-	091°(090.20°)	0.9	7.0	L	5000	-	-	RNP1
006	TF	PAMOK	181159.97	N	0995138.70	E	-	041°(040.24°)	0.9	8.2	L	7000+	-	-	RNP1
007	TF	HOLUA	182058.08	N	0994529.53	E	-	328°(326.78°)	0.9	10.7	L	9000+	-	-	RNP1
008	TF	JUMKA	182428.73	N	0993848.79	E	-	300°(298.85°)	0.9	7.3	-	11000+	-	-	RNP1
009	TF	SAMAI	175404.69	N	0993206.25	E	-	176°(175.43°)	0.9	11.7	L	7000+	-	-	RNP1
010	TF	WANSA	175116.07	N	0994329.62	E	-	105°(104.42°)	0.9	11.2	-	9000+	-	-	RNP1

STANDARD DEPARTURE CHART -
INSTRUMENT (SID) - ICAO

APP : 119.3
TWR : 122.3 , 236.6

LAMPANG / Lampang (VTCL)
RNAV RWY36
MARBO 1A PAHIN 1A
PHATA 1A TOHAN 1A



**STANDARD DEPARTURE CHART -
INSTRUMENT (SID) - ICAO**

APP : 119.3
TWR : 122.3 , 236.6

**LAMPANG / Lampang (VTCL)
RNAV RWY36**

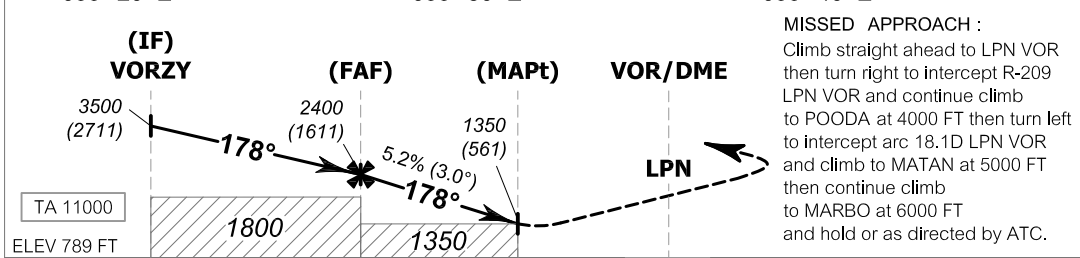
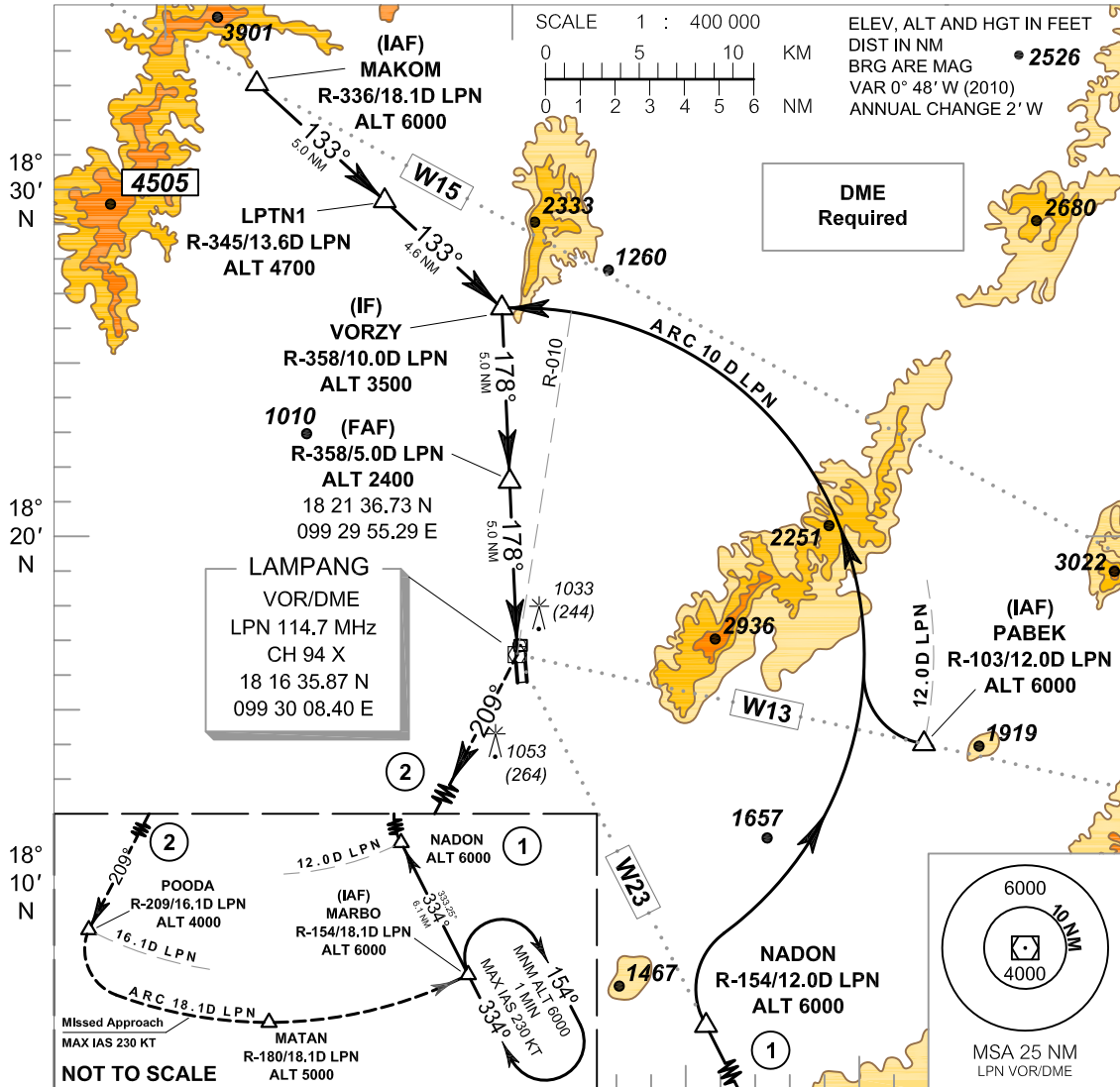
**MARBO 1A PAHIN 1A
PHATA 1A TOHAN 1A**

Serial Number	Path Descriptor	Waypoint Identifier	WGS-84 Coordinates			Flyover	Course	Magnetic	Distance	Turn	Altitude	Speed	VPA/ TCH	Navigation
			Latitude	Longitude	° M (° T)		Variation	(NM)	Direction	(FT)	(KT)	Specification		
001	-	DER RWY36	181641.88	N	0993012.81	E	-	0.9	-	-	-	-	-	RNP1
002	CF	SOKOM	182933.28	N	0992908.18	E	356°(355.43°)	0.9	12.9	L, R	5000+	250	-	RNP1
003	TF	TOHAN	183256.22	N	0992240.53	E	300°(298.77°)	0.9	7.0	-	7000+	-	-	RNP1
004	TF	BARTO	183035.35	N	0994246.65	E	086°(085.42°)	0.9	13.0	R	9000+	250	-	RNP1
005	TF	SONPA	182201.42	N	0994329.07	E	176°(175.49°)	0.9	8.6	L, R	11000+	250	-	RNP1
006	TF	PHATA	181837.70	N	0994956.14	E	120°(118.84°)	0.9	7.0	-	FL 130+	-	-	RNP1
007	TF	HOKON	181358.29	N	0994226.87	E	188°(187.01°)	0.9	8.1	L, R	11000+	250	-	RNP1
008	TF	PAHIN	181227.82	N	0994929.02	E	103°(102.62°)	0.9	6.9	-	FL 130+	-	-	RNP1
009	TF	MARBO	180022.22	N	0993842.17	E	196°(194.76°)	0.9	14.0	-	FL 130+	-	-	RNP1

INSTRUMENT APPROACH CHART - ICAO
AERODROME ELEV 811 FT
HEIGHTS RELATED TO THR RWY 18 ELEV 789 FT

APP : 119.3
TWR : 122.3 , 236.6

LAMPANG / Lampang (VTCL)
VOR RWY18



MISSED APPROACH :
Climb straight ahead to LPN VOR then turn right to intercept R-209 LPN VOR and continue climb to POODA at 4000 FT then turn left to intercept arc 18.1D LPN VOR and climb to MATAN at 5000 FT then continue climb to MARBO at 6000 FT and hold or as directed by ATC.

TA 11000
ELEV 789 FT (THR RWY 18)
NM FM THR 18
DME FM VOR/DME

OCA/H	A	B	C	D	Distance (LPN)	FAF	4D	3D	2D	MAPt		
Straight - in approach	1350 (561)				Altitude (Height)	2400 (1611)	2080 (1291)	1760 (971)	1445 (656)	1350 (561)		
					Ground speed	knot	70	90	100	120	140	160
Circling (OCH AAL)	1350 (539)		1500 (689)		Rate of descent	(ft/min)	369	474	527	632	737	843

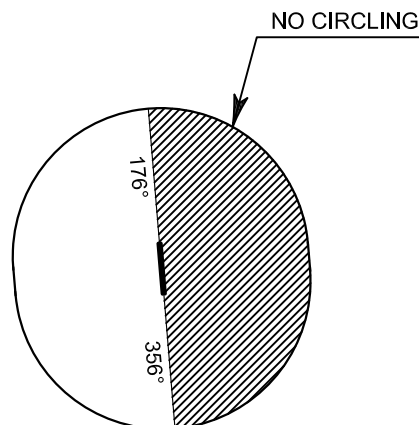
REMARK : FOR CIRCLING RESTRICTION SEE VERSO

INSTRUMENT APPROACH CHART - ICAO
AERODROME ELEV 811 FT
HEIGHTS RELATED TO THR RWY 18 ELEV 789 FT

APP : 119.3
TWR : 122.3 , 236.6

LAMPANG / Lampang (VTCL)
VOR RWY18

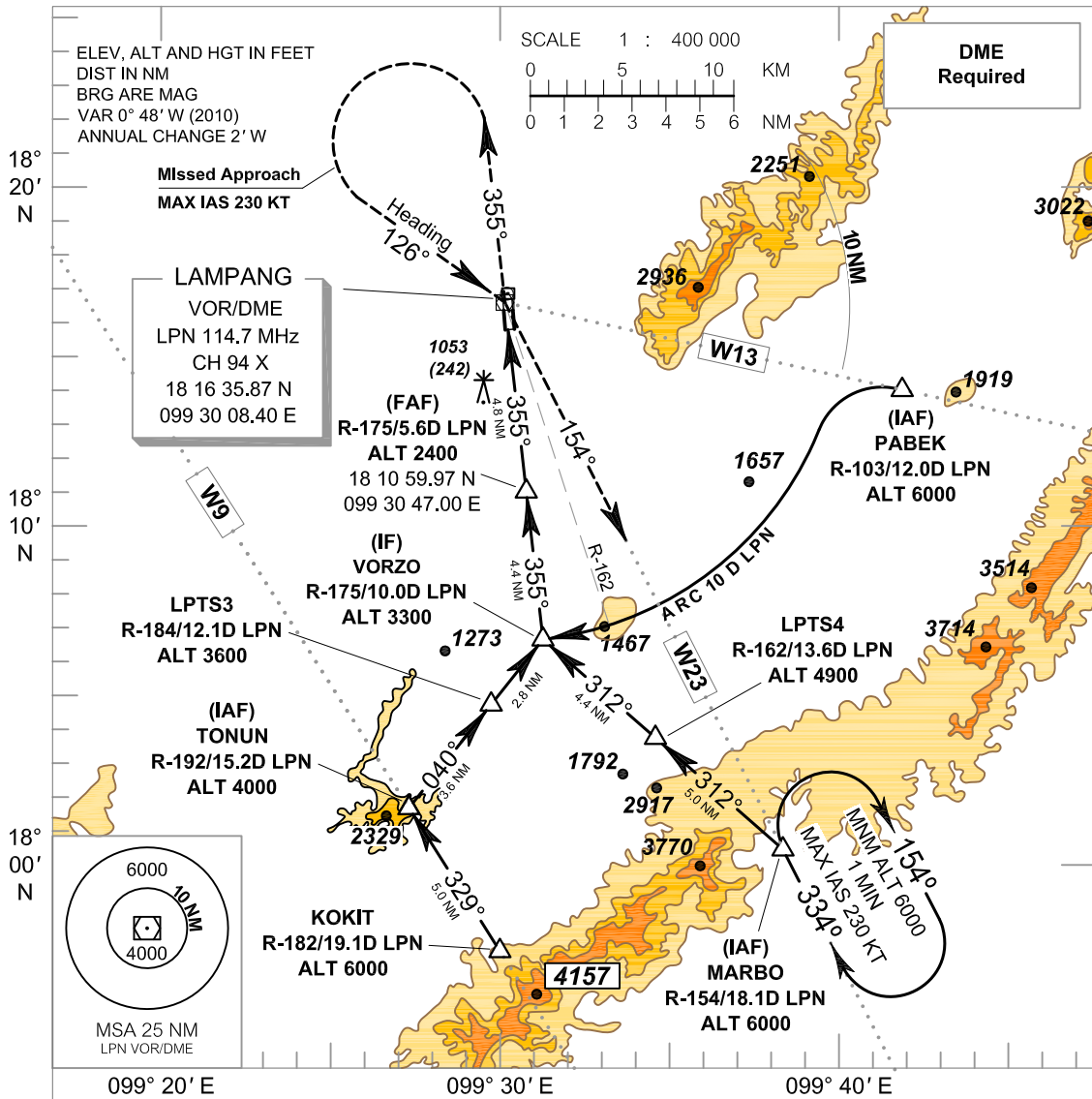
(IAF) MARBO	R-154 / 18.1D LPN	18 00 22.22 N	099 38 42.17 E
(IAF) PABEK	R-103 / 12.0D LPN	18 13 58.26 N	099 42 27.02 E
(IAF) MAKOM	R-336 / 18.1D LPN	18 33 08.60 N	099 22 16.79 E
NADON	R-154 / 12.0D LPN	18 05 50.31 N	099 35 49.24 E
LPTN1	R-345 / 13.6D LPN	18 29 44.72 N	099 26 09.32 E
(IF) VORZY	R-358 / 10.0D LPN	18 26 37.93 N	099 29 42.15 E
(FAF)	R-358 / 5.0D LPN	18 21 36.73 N	099 29 55.29 E
(MAPt)	R-358 / 1.7D LPN	18 18 18.18 N	099 30 03.94 E
POODA	R-209 / 16.1D LPN	18 02 16.38 N	099 22 18.73 E
MATAN	R-180 / 18.1D LPN	17 58 25.32 N	099 30 05.29 E



INSTRUMENT AERODROME ELEV 811 FT
APPROACH HEIGHTS RELATED TO
CHART - ICAO AERODROME ELEV

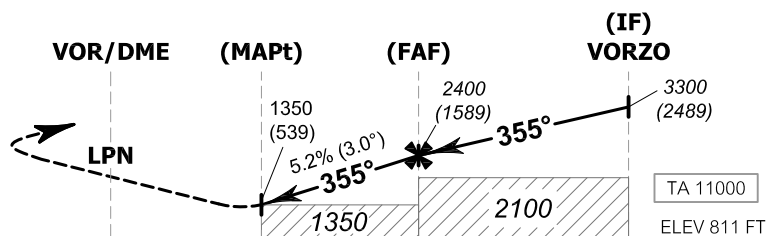
APP : 119.3
TWR : 122.3 , 236.6

LAMPANG / Lampang (VTCL)
VOR RWY36



MISSED APPROACH :

Speed restricted to MAX IAS 230 KT until after turn. Climb straight ahead to 2500 FT then turn left and continue climb on heading 126° to LPN VOR then turn right to intercept R-154 LPN VOR and continue climb to MARBO at 6000 FT and hold or as directed by ATC.



NM FM THR 36	0	1.5	4.8	9.2	
DME FM VOR/DME	0	0.8	2.3	5.6	10.0

OCA/H	A	B	C	D	Distance (LPN)	MAPt	3D	4D	5D	FAF		
Straight - in approach	1350 (539)				Altitude (Height)	1350 (539)	1560 (749)	1880 (1069)	2190 (1379)	2400 (1589)		
					Ground speed	knot	70	90	100	120	140	160
Circling (OCH AAL)	1350 (539)		1500 (689)		Rate of descent	(ft/min)	369	474	527	632	737	843

REMARK : FOR CIRCLING RESTRICTION SEE VERSO

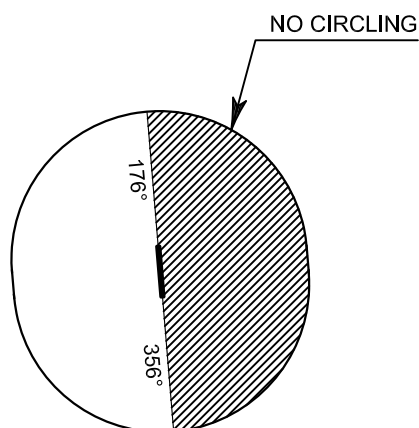
INSTRUMENT APPROACH CHART - ICAO **AERODROME ELEV 811 FT**
HEIGHTS RELATED TO
AERODROME ELEV

APP : 119.3
TWR : 122.3 , 236.6

LAMPANG / Lampang (VTCL)

VOR RWY36

(IAF) MARBO	R-154 / 18.1D LPN	18 00 22.22 N	099 38 42.17 E
(IAF) PABEK	R-103 / 12.0D LPN	18 13 58.26 N	099 42 27.02 E
(IAF) TONUN	R-192 / 15.2D LPN	18 01 38.23 N	099 27 06.81 E
KOKIT	R-182 / 19.1D LPN	17 57 23.53 N	099 29 55.03 E
LPTS4	R-162 / 13.6D LPN	18 03 41.33 N	099 34 45.80 E
LPTS3	R-184 / 12.1D LPN	18 04 27.48 N	099 29 28.67 E
(IF) VORZO	R-175 / 10.0D LPN	18 06 36.88 N	099 31 17.20 E
(FAF)	R-175 / 5.6D LPN	18 10 59.97 N	099 30 47.00 E
(MAPt)	R-175 / 2.3D LPN	18 14 17.49 N	099 30 24.30 E

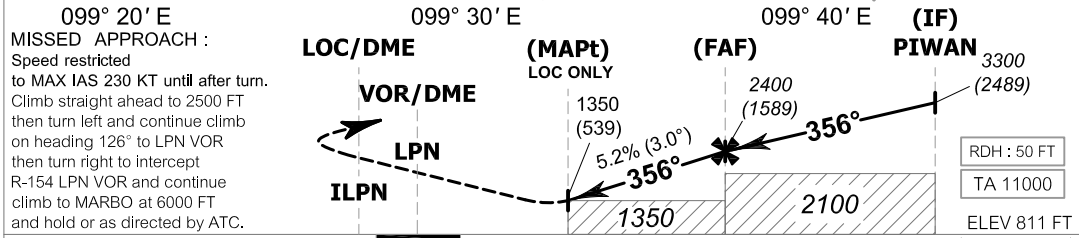
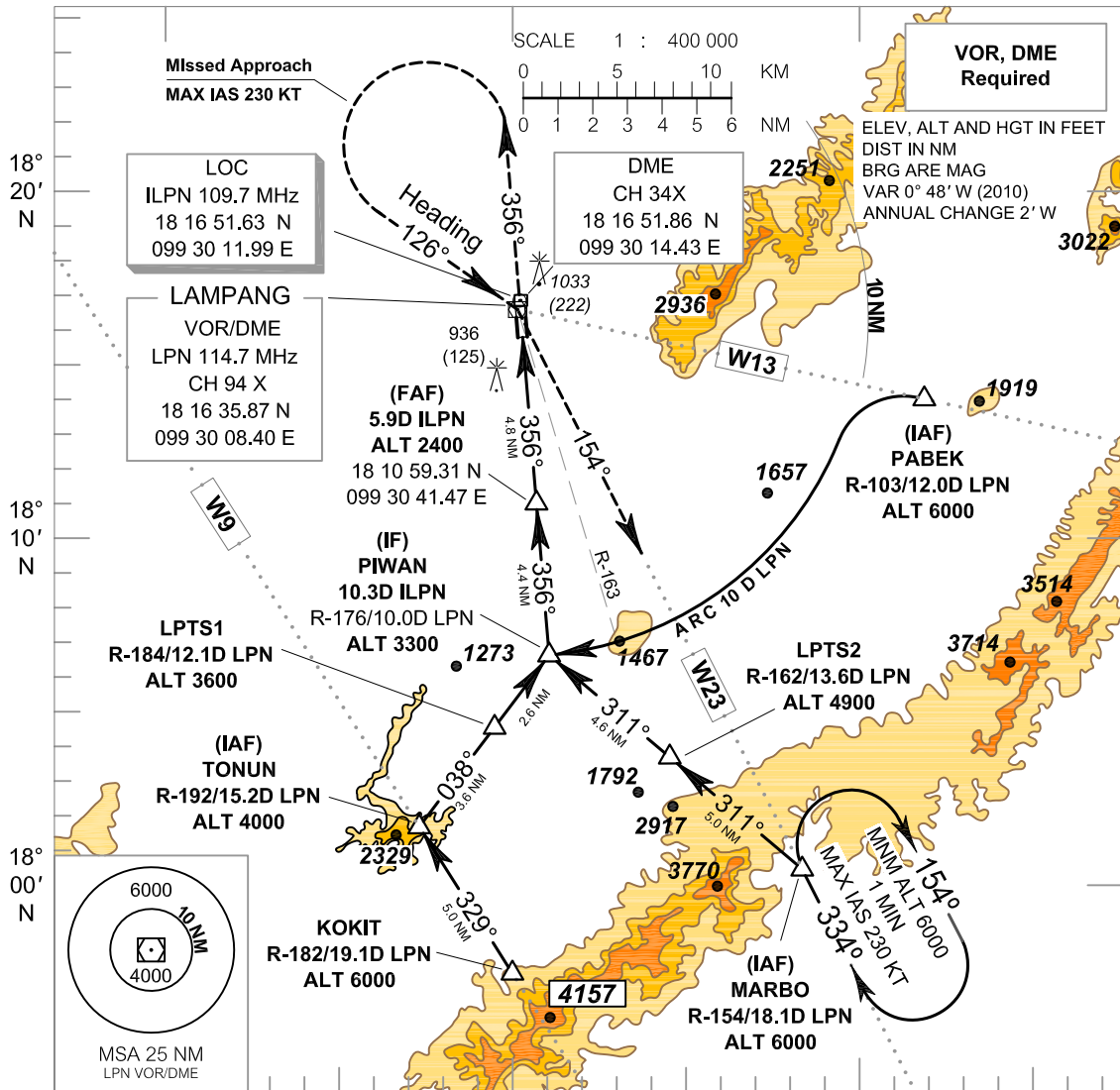


INSTRUMENT AERODROME ELEV 811 FT
APPROACH HEIGHTS RELATED TO
CHART - ICAO AERODROME ELEV

APP : 119.3
TWR : 122.3 , 236.6

LAMPANG / Lampang (VTCL)

LOC RWY36



NM FM THR 36	0	1.5	4.8	9.2
DME FM VOR/DME	0	0.8	2.3	5.6
DME FM LOC/DME	0	1.1	2.6	5.9

OCA/H		A	B	C	D	Distance (ILPN)	MAPt	3D	4D	5D	FAF	
Straight - in approach	LOC Only	1350 (539)				Altitude (Height)	1350 (539)	1465 (654)	1785 (974)	2105 (1294)	2400 (1589)	
		Ground speed	knot	70	90	100	120	140	160			
Circling (OCH AAL)		1350 (539)		1500 (689)		Rate of descent (ft/min)	369	474	527	632	737	843

REMARK : FOR CIRCLING RESTRICTION SEE VERSO

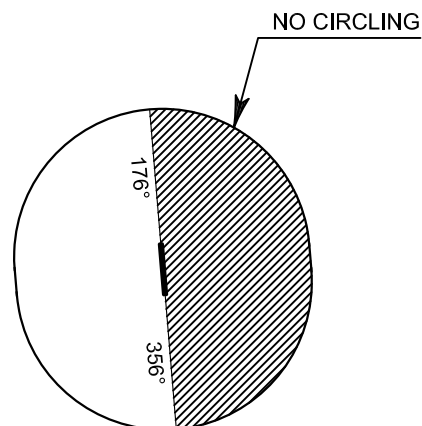
INSTRUMENT APPROACH CHART - ICAO **AERODROME ELEV 811 FT**
HEIGHTS RELATED TO
AERODROME ELEV

APP : 119.3
TWR : 122.3 , 236.6

LAMPANG / Lampang (VTCL)

LOC RWY36

(IAF) MARBO	R-154 / 18.1D LPN	18 00 22.22 N	099 38 42.17 E
(IAF) PABEK	R-103 / 12.0D LPN	18 13 58.26 N	099 42 27.02 E
(IAF) TONUN	R-192 / 15.2D LPN	18 01 38.23 N	099 27 06.81 E
KOKIT	R-182 / 19.1D LPN	17 57 23.53 N	099 29 55.03 E
LPTS2	R-162 / 13.6D LPN	18 03 37.53 N	099 34 42.36 E
LPTS1	R-184 / 12.1D LPN	18 04 30.84 N	099 29 24.18 E
(IF) PIWAN	10.3D ILPN	18 06 35.59 N	099 31 03.51 E
(FAF)	5.9D ILPN	18 10 59.31 N	099 30 41.47 E
(MAPt)	2.6D ILPN	18 14 17.53 N	099 30 24.89 E

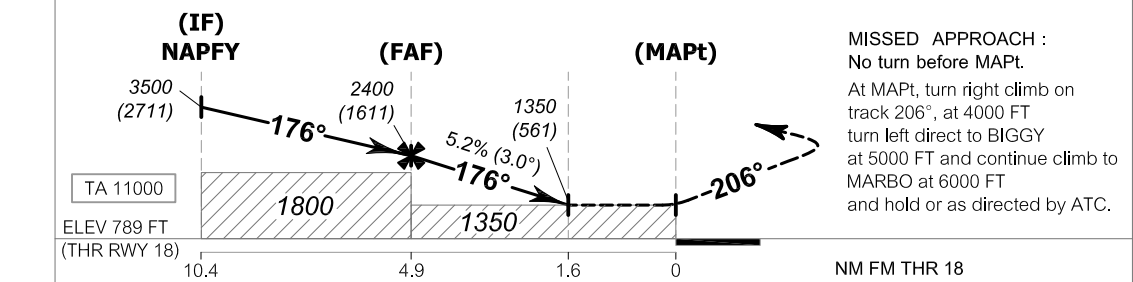
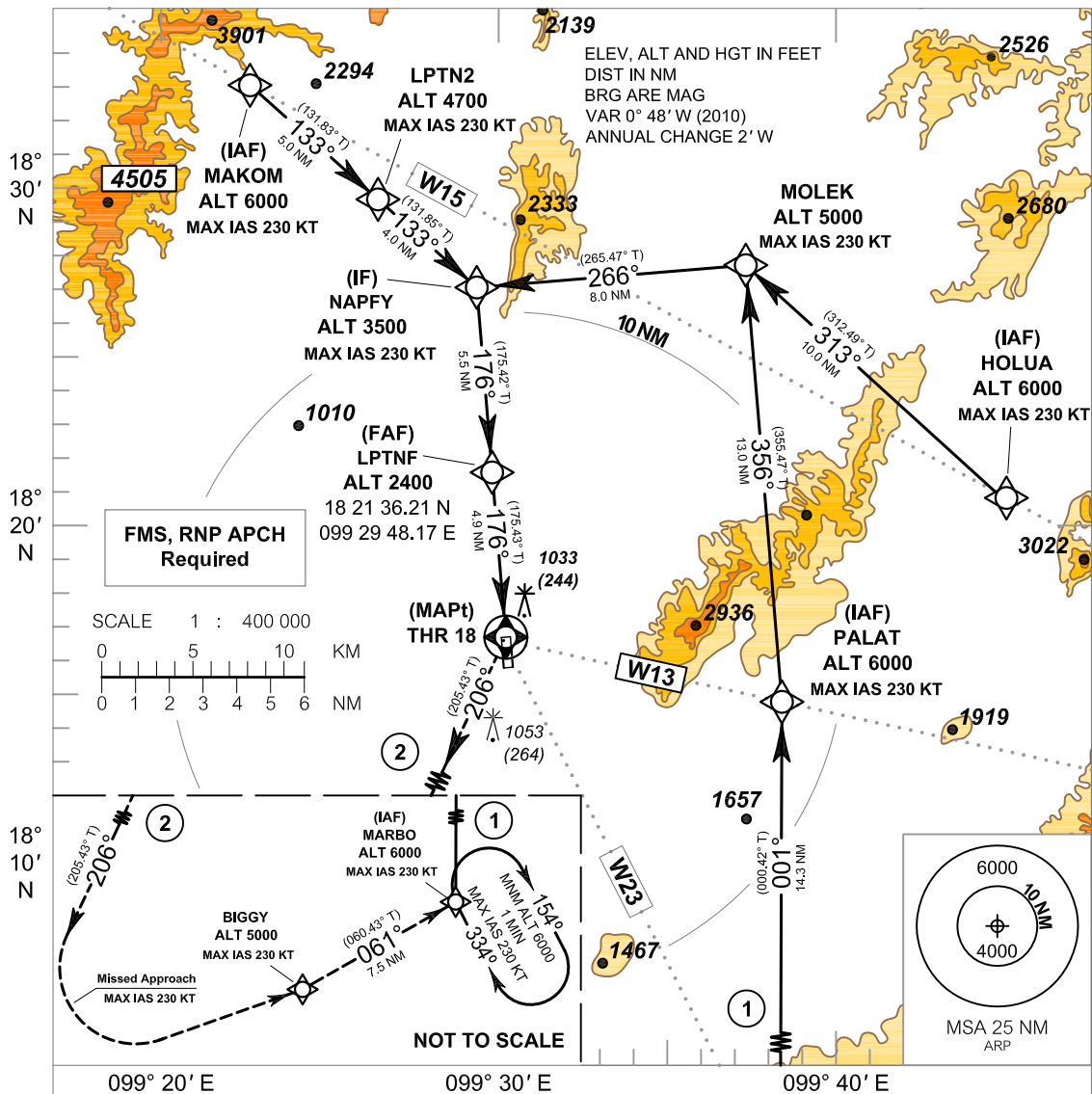


INSTRUMENT AERODROME ELEV 811 FT
APPROACH HEIGHTS RELATED TO
CHART - ICAO THR RWY 18 ELEV 789 FT

APP : 119.3
TWR : 122.3 , 236.6

LAMPANG / Lampang (VTCL)

RNP RWY18



CHANGE: CHART TITLE:

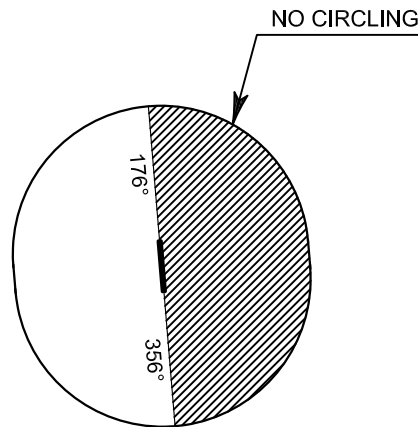
OCA/H	A	B	C	D	NM to THR 18	FAF	4 NM	3 NM	2 NM	1.6 NM		
LNAV	1350 (561)				Altitude (Height)	2400 (1611)	2115 (1326)	1795 (1006)	1475 (686)	1350 (561)		
					Ground speed	knot	70	90	100	120	140	160
Circling (OCH AAL)	1350 (539)		1500 (689)		Rate of descent	(ft/min)	369	474	527	632	737	843

REMARK : FOR CIRCLING RESTRICTION SEE VERSO

INSTRUMENT AERODROME ELEV 811 FT
APPROACH HEIGHTS RELATED TO
CHART - ICAO THR RWY 18 ELEV 789 FT

LAMPANG / Lampang (VTCL)
RNP RWY18

Serial Number	Path Descriptor	Waypoint Identifier	WGS-84 Coordinates				Flyover	Course ° M (° T)	Magnetic Variation	Distance (NM)	Turn Direction	Altitude (FT)	Speed (KT)	VPA/TCH	Navigation Specification
			Latitude	Longitude											
001	IF	MARBO (IAF)	180022.22	N	0993842.17	E	-	001°(000.42°)	0.9	14.3	-	6000	230	-	RNP APCH
002	IF, TF	PALAT (IAF)	181444.92	N	0993848.76	E	-	356°(355.47°)	0.9	13.0	L	6000	230	-	RNP APCH
003	IF	HOLUA (IAF)	182058.08	N	0994529.53	E	-	313°(312.49°)	0.9	10.0	-	6000	230	-	RNP APCH
004	TF	MOLEK	182744.86	N	0993744.02	E	-	266°(265.47°)	0.9	8.0	L	5000	230	-	RNP APCH
005	IF	MAKOM (IAF)	183308.60	N	0992216.79	E	-	133°(131.83°)	0.9	5.0	-	6000	230	-	RNP APCH
006	TF	LPTN2	182947.63	N	0992612.09	E	-	133°(131.85°)	0.9	4.0	-	4700	230	-	RNP APCH
007	TF	NAPFY (IF)	182706.57	N	0992920.48	E	-	176°(175.42°)	0.9	5.5	L, R	3500	230	-	RNP APCH
008	TF	LPTNF (FAF)	182136.21	N	0992948.17	E	-	176°(175.43°)	0.9	4.9	-	2400	-	-	RNP APCH
009	-	MAPt (THR18)	181641.88	N	0993012.81	E	Y	206°(205.43°)	0.9	-	R	1350	-	-	RNP APCH
010	CA						-	-	0.9	-	L	4000	230	-	RNP APCH
011	DF	BIGGY	175640.38	N	0993153.26	E	-	061°(060.43°)	0.9	7.5	-	5000	230	-	RNP APCH
012	TF	MARBO (IAF)	180022.22	N	0993842.17	E	-	-	0.9	-	-	6000	230	-	RNP APCH
013	HM	MARBO (IAF)	180022.22	N	0993842.17	E	Y	334°(333.05°)	0.9	-	R	6000	230	-	RNP APCH



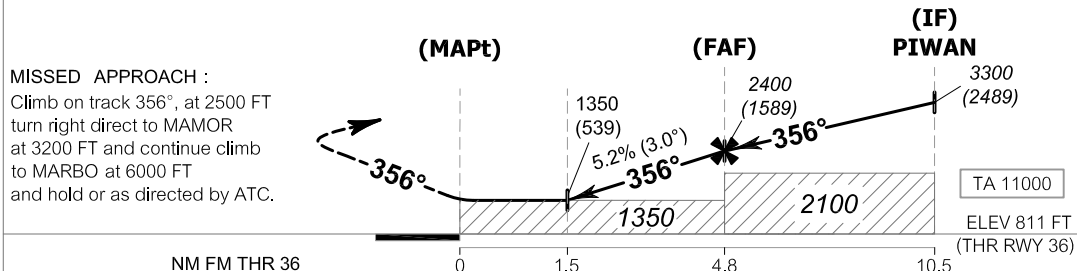
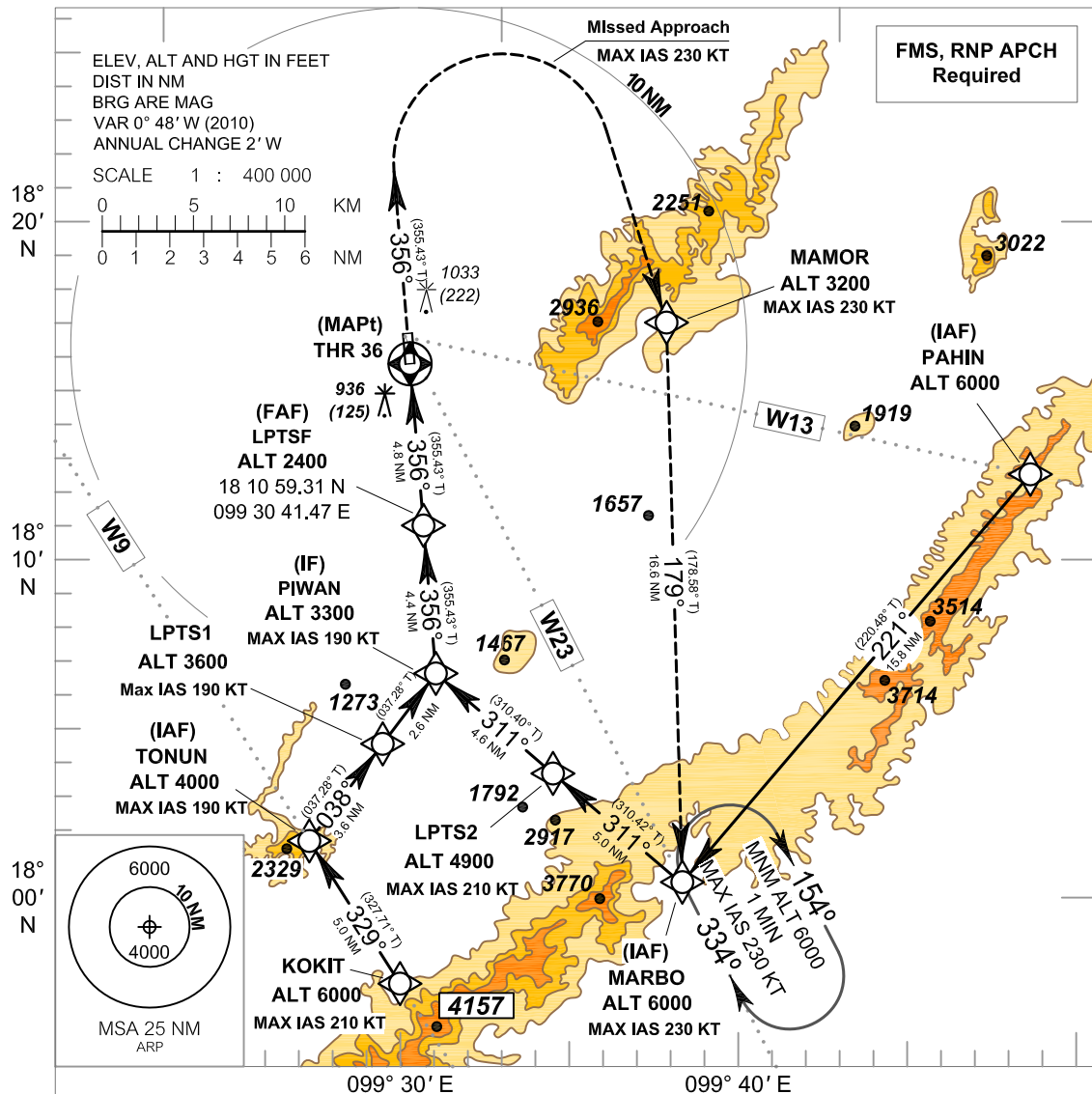
CHANGE: CHART TITLE.

INSTRUMENT AERODROME ELEV 811 FT
APPROACH HEIGHTS RELATED TO
CHART - ICAO AERODROME ELEV

APP : 119.3
TWR : 122.3 , 236.6

LAMPANG / Lampang (VTCL)

RNP RWY36



CHANGE: CHART TITLE:

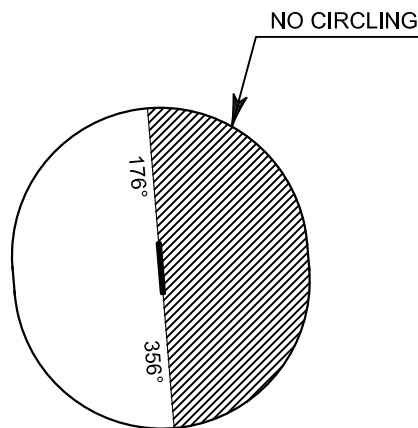
OCA/H	A	B	C	D	NM to THR 36	1.5 NM	2 NM	3 NM	4 NM	FAF		
LNAV	1350 (539)				Altitude (Height)	1350 (539)	1500 (689)	1815 (1004)	2135 (1324)	2400 (1589)		
					Ground speed	knot	70	90	100	120	140	160
Circling (OCH AAL)	1350 (539)		1500 (689)		Rate of descent	(ft/min)	369	474	527	632	737	843

REMARK : FOR CIRCLING RESTRICTION SEE VERSO

INSTRUMENT AERODROME ELEV 811 FT
APPROACH HEIGHTS RELATED TO
CHART - ICAO AERODROME ELEV

LAMPANG / Lampang (VTCL)
RNP RWY36

Serial Number	Path Descriptor	Waypoint Identifier	WGS-84 Coordinates				Flyover	Course ° M (° T)	Magnetic Variation	Distance (NM)	Turn Direction	Altitude (FT)	Speed (KT)	VPA/TCH	Navigation Specification
			Latitude		Longitude										
001	IF	PAHIN (IAF)	181227.82	N	0994929.02	E	-	221°(220.48°)	0.9	15.8	-	6000	-	-	RNP APCH
002	IF, TF	MARBO (IAF)	180022.22	N	0993842.17	E	-	311°(310.42°)	0.9	5.0	R	6000	230	-	RNP APCH
003	TF	LPTS2	180337.53	N	0993442.36	E	-	311°(310.40°)	0.9	4.6	-	4900	210	-	RNP APCH
004	IF	KOKIT	175723.53	N	0992955.03	E	-	329°(327.71°)	0.9	5.0	-	6000	210	-	RNP APCH
005	IF, TF	TONUN (IAF)	180138.23	N	0992706.81	E	-	038°(037.28°)	0.9	3.6	R	4000	190	-	RNP APCH
006	TF	LPTS1	180430.84	N	0992924.18	E	-	038°(037.28°)	0.9	2.6	-	3600	190	-	RNP APCH
007	TF	PWAN (IF)	180635.59	N	0993103.51	E	-	356°(355.43°)	0.9	4.4	L, R	3300	190	-	RNP APCH
008	TF	LPTSF (FAF)	181059.31	N	0993041.47	E	-	356°(355.43°)	0.9	4.8	-	2400	-	-	RNP APCH
009	-	MAPt (THR36)	181547.63	N	0993017.35	E	Y	356°(355.43°)	0.9	-	-	1350	-	-	RNP APCH
010	CA						-	-	0.9	-	R	2500	230	-	RNP APCH
011	DF	MAMOR	181659.94	N	0993816.26	E	-	179°(178.58°)	0.9	16.6	R	3200	230	-	RNP APCH
012	TF	MARBO (IAF)	180022.22	N	0993842.17	E	-	-	0.9	-	-	6000	230	-	RNP APCH
013	HM	MARBO (IAF)	180022.22	N	0993842.17	E	Y	334°(333.25°)	0.9	-	R	6000	230	-	RNP APCH



CHANGE: CHART TITLE.