

## VTBO AD 2.1 AERODROME LOCATION INDICATOR AND NAME

## VTBO - TRAT (KHAO SMING) / TRAT AIRPORT

## VTBO AD 2.2 AERODROME GEOGRAPHICAL AND ADMINISTRATIVE DATA

1	ARP coordinates and site at AD	121631N 1021912E Centre line of RWY, 900 M From THR 23
2	Direction and distance from (city)	32 KM , NW of city (Trat)
3	Elevation/Reference temperature	82 FT (25 M)/30.8°C
4	Geoid Undulation at AD ELEV PSN	NIL
5	MAG VAR/Annual change	0°31'W(2011)/0°1'W/YEAR
6	AD Administration, address, telephone, telefax, telex, AFS	Trat Airport Bangkok Airways Public Company Limited 99 Moo 3 Tambon Tasom Khao Saming District Trat Thailand 23150 Tel: +663 952 5777 Fax: +663 952 5778 E-mail: tdxairport@bangkokair.com Website: www.tratairport.com
7	Types of traffic permitted (IFR/VFR)	IFR/VFR
8	Remarks	Operator: Bangkok Airways Public Company Limited

## VTBO AD 2.3 OPERATIONAL HOURS

1	Aerodrome Operator	2300-1500
2	Customs and immigration	NIL
3	Health and sanitation	NIL
4	AIS Briefing Office	2300-1100
5	ATS Reporting Office (ARO)	2300-1100 other this period 3 HR PN to ATC via AFS: VTBBZAZX Tel: +662 285 9695
6	MET Briefing Office	2300-1100
7	ATS	2300-1100 other this period 3 HR PN to ATC via AFS: VTBBZAZX Tel: +662 285 9695
8	Fuelling	0100-1200 or available on Request
9	Handling	0100-1200 or available on Request
10	Security	H24
11	De-icing	NIL
12	Remarks	NIL

**VTBO AD 2.4 HANDLING SERVICES AND FACILITIES**

1	Cargo-handling facilities	NIL
2	Fuel/oil types	JET A-1
3	Fuelling facilities/capacity	Bangkok Aviation Fuel Service Public Co., Ltd. (BAFS) a) Regional Airport Manager E-mail: teerakan@bafs.co.th Tel: +668 9134 5690 b) Trat Airport Station E-mail: Pongsak.K@ips-services.co.th Tel: +668 1863 8602 Fuel Dispenser Truck: 1, Capacity: 7,500 L Fuel Tank Capacity: 25,000 L
4	De-icing facilities	NIL
5	Hangar space for visiting aircraft	NIL
6	Repair facilities for visiting aircraft	NIL
7	Remarks	The airport has provided ground handling agent as following: a) Bangkok Airways Ground Services Co., Ltd. (PGGS) Ground Handling Inquiry E-mail: office@pg-gs.com Tel: +667 742 8500 Ext. 31381 +666 3079 6696 b) BAGS Ground Services Co., Ltd. E-mail: tdx-stationmanager@bags-grounds-services.com Tel: +668 6804 9696

**VTBO AD 2.5 PASSENGER FACILITIES**

1	Hotels	In the city
2	Restaurants	At the AD and in the city
3	Transportation	Limousines
4	Medical facilities	First AID at airport
5	Bank and Post Office	In the city
6	Tourist Office	Office in Amphoe Lame Ngop
7	Remarks	NIL

**VTBO AD 2.6 RESCUE AND FIRE FIGHTING SERVICES**

1	AD category for fire fighting	Category 5
2	Rescue equipment	AVBL at Fire Fighting Truck (Foam 570 L., Water 5700 L.) and Water Truck 15000 L.
3	Capability for removal of disabled aircraft	NIL
4	Remarks	Available 24H

**VTBO AD 2.7 SEASONAL AVAILABILITY - CLEARING**

1	Types of clearing equipment	NIL
2	Clearance priorities	NIL
3	Remarks	The aerodrome is available all seasons

**VTBO AD 2.8 APRONS, TAXIWAYS AND CHECK LOCATIONS/POSITIONS DATA**

1	Apron surface and strength	N/A
2	Taxiway width, surface and strength	N/A
3	Altimeter checkpoint location and elevation	THR 18, 61 FT
4	VOR checkpoints	N/A
5	INS checkpoints	N/A
6	Remarks	ACFT parking on RWY

**VTBO AD 2.9 SURFACE MOVEMENT GUIDANCE AND CONTROL SYSTEM AND MARKINGS**

1	Use of aircraft stand ID signs, TWY guide lines and visual docking/parking guidance system of aircraft stands	N/A
2	RWY and TWY markings and LGT	RWY : Marking and lighting
3	Stop bars	N/A
4	Remarks	No TWY

**VTBO AD 2.10 AERODROME OBSTACLES**

In approach/TKOF areas			In circling areas and at AD		Remarks
1			2		
RWY/Area affected	Obstacle type Elevation Markings/LGT	Coordinates	Obstacle type Elevation Markings/LGT	Coordinates	
a	b	c	a	b	
NIL			Hill 210 M (690 FT)	121608N 1021805E	NIL
			Hill 206 M (676 FT)	121533N 1021909E	
			Hill 102.46 M (340 FT)	121601N 1021845E	

VTBO AD 2.11 METEOROLOGICAL INFORMATION PROVIDED

1	Associated MET Office	Aeronautical Meteorological Station-Trat, Thai Meteorological Department (TMD)
2	Hours of service MET Office outside hours	0000-1100 NIL
3	Office responsible for TAF preparation Periods of validity	Supply TAF from Aeronautical Meteorology Division 24 HR
4	Type of landing forecast Interval of issuance	NIL NIL
5	Briefing/consultation provided	Personal Consultation Tel: +663 952 5777 ext. 3433
6	Flight documentation Language(s) used	NIL
7	Charts and other information available for briefing or consultation	NIL
8	Supplementary equipment available for providing information	Barometer, Anemometer and Thermometer Screen
9	ATS units provided with information	Trat TWR
10	Additional information (limitation of service, etc.)	NIL

VTBO AD 2.12 RUNWAY PHYSICAL CHARACTERISTICS

Designations RWY NR	TRUE BRG	Dimensions of RWY(M)	Strength (PCN) and surface of RWY and SWY	THR coordinates RWY end coordinates THR geoid undulation	THR elevation and highest elevation of TDZ of precision APP RWY
1	2	3	4	5	6
05	051.28°	1800x45	PCN 41/F/B/X/T Concrete and asphalt	121612.65N 1021848.46E	THR 32.15 M
23	231.28	1800x45	PCN 41/F/B/X/T Concrete and asphalt	121649.30N 1021934.94E	THR 18.73 M

Slope of RWY-SWY	SWY dimensions (M)	CWY dimensions (M)	Strip dimensions (M)	OFZ	Remarks
7	8	9	10	11	12
-0.80%-0.40% (1550, 250)	NIL	60x150	1920x150	NIL	NIL
+0.40%+0.80% (250, 1550)	NIL	60x150	1920x150	NIL	NIL

VTBO AD 2.13 DECLARED DISTANCES

RWY Designator	TORA (M)	TODA (M)	ASDA (M)	LDA (M)	Remarks
1	2	3	4	5	6
05	1800	1860	1800	1800	NIL
23	1800	1860	1800	1800	NIL

VTBO AD 2.14 APPROACH AND RUNWAY LIGHTING

RWY Designator	APCH LGT type LEN INTST	THR LGT colour WBAR	VASIS (MEHT) PAPI	TDZ, LGT LEN	RWY Centre Line LGT Length, spacing, colour, INTST	RWY edge LGT LEN, spacing, colour INTST	RWY End LGT colour WBAR	SWY LGT LEN (M) colour	Remarks
1	2	3	4	5	6	7	8	9	10
05	NIL	Green	PAPI LEFT 4°	NIL	1800 M 60 M White	1800 M 60 M White	Red	NIL	NIL
23	NIL	Green	PAPI LEFT 3°	NIL	1800 M 60 M White	1800 M 60 M White	Red	NIL	NIL

VTBO AD 2.15 OTHER LIGHTING, SECONDARY POWER SUPPLY

1	ABN/IBN location, characteristics and hours of operation	ABN: On top of Control Tower. FLG WG EV 3 SEC 2300-1130
2	LDI location and LGT Anemometer location and LGT	WDI 315 M offset 100 M FM THR23 left side illuminated WDI at THR23 right side offset 88 M WDI 628 offset 88 M FM THR23 right side illuminated
3	TWY edge and centre line lighting	NIL
4	Secondary power supply/switch-over time	STBY power switch-overtime 17 SEC
5	Remarks	NIL

VTBO AD 2.16 HELICOPTER LANDING AREA

1	Coordinates TLOF or THR of FATO Geoid undulation	NIL
2	TLOF and/or FATO elevation M/FT	NIL
3	TLOF and FATO area dimensions, surface, strength, marking	NIL
4	True and MAG BRG of FATO	NIL
5	Declared distance available	NIL
6	APP and FATO lighting	NIL
7	Remarks	NIL

VTBO AD 2.17 ATS AIRSPACE

1	Designation and lateral limits	A Circle of 5 NM radius centred on Trat NDB (121628.10N 1021850.08E)
2	Vertical limits	2000 FT/AGL
3	Airspace classification	D
4	ATS unit call sign Language(s)	Trat Tower English, Thai
5	Transition altitude	11000 FT
6	Remarks	NIL

**VTBO AD 2.18 ATS COMMUNICATION FACILITIES**

Service designation	Call sign	Frequency	Hours of operation	Remarks
1	2	3	4	5
APP	Trat Approach	120.25 MHZ 121.5 MHZ <sup>1)</sup>	2300-1100	If unable to contact Approach Control Centre/office attempt to contact tower on Approach frequency Other than this period and holiday 3 HR PN to Bangkok Approach Control Centre via AFS: VTBBZAZX Tel: +662 285 9695 <sup>1)</sup> Emergency frequency
TWR	Trat Tower	122.9 MHZ 121.5 MHZ <sup>1)</sup>	2300-1100	

**VTBO AD 2.19 RADIO NAVIGATION AND LANDING AIDS**

Type of aid, MAG VAR CAT of ILS/MLS (For VOR/ILS/MLS, give declination)	ID	Frequency	Hours of operation	Position of transmitting antenna coordinates	Elevation of DME transmitting antenna	Remarks
1	2	3	4	5	6	7
NDB	TRT	384 KHZ	H24	121628.10N 1021850.08E	24 M from ground	NDB restriction, due to NDB 50 NM orbit coverage data found as follows: - Bearing 001-130° unusable due to border limited. - Bearing 131-320° Altitude should not below 5 000 FT - Bearing 321-360° Altitude should not below 8 000 FT
DME	TRT	Tx. 997 MHZ Rx.1060 MHZ CH36X (109.9 MHZ)	H24	121635.29N 1021908.74E	15 M from ground	DME restriction, due to mountainous terrain surround DME station coverage check does not provide adequate signal to 25 NM at required altitude in various areas: 1. 25 NM clockwise orbit flown from - Bearing 001-020° Altitude should not below 2 000 FT - Bearing 121-150° Altitude should not below 14 000 FT - Bearing 151-190° Altitude should not below 10 000 FT - Bearing 191-360° Altitude should not below 7 000 FT 2. 20 NM clockwise orbit flown from - Bearing 021-090° Altitude should not below 2 000 FT - Bearing 091-120° Altitude should not below 5 000 FT (due to border limited)

**VTBO AD 2.20 LOCAL AERODROME REGULATIONS**

- If an aircraft is parking on RWY, using the RWY is totally prohibited for another aircraft.

**VTBO AD 2.21 NOISE ABATEMENT PROCEDURES**

NIL

**VTBO AD 2.22 FLIGHT PROCEDURES**

NIL

**VTBO AD 2.23 ADDITIONAL INFORMATION**

NIL

**VTBO AD 2.24 CHARTS RELATED TO AN AERODROME**

<b>Chart name</b>	<b>Page</b>
Instrument Approach Chart - ICAO - RNP RWY 23	AD 2-VTBO-8-1
Instrument Approach Chart - ICAO - RNP RWY 23 (Tabular description)	AD 2-VTBO-8-2

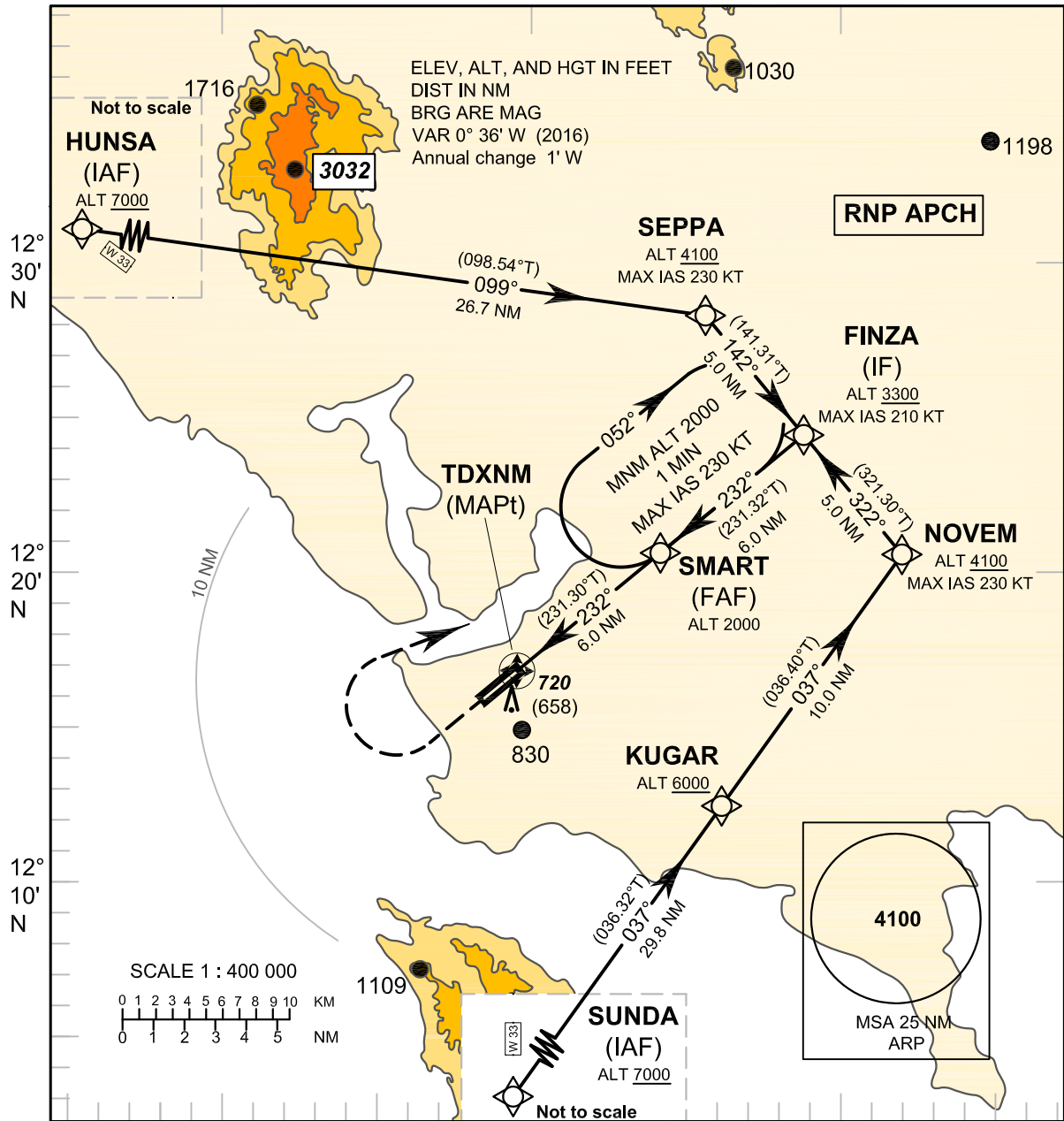
**INTENTIONALLY BLANK**



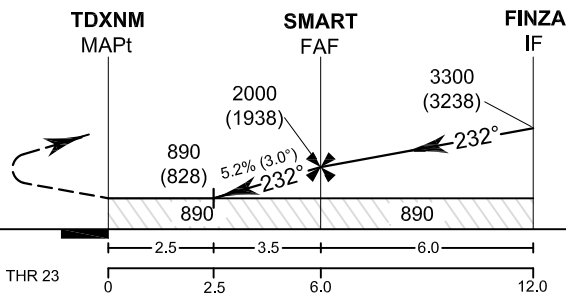
**INSTRUMENT APPROACH CHART-ICAO** **AERODROME ELEV 82 FT**  
**HEIGHTS RELATED TO THR RWY23 - ELEV 62 FT**

APP : 120.25  
TWR : 122.9

**TRAT / Trat (VTBO)**  
**RNP RWY23**



**Missed Approach :**  
**No turn before MAPt.**  
 Climb on track 232° to 1200 FT,  
 then turn right direct to **FAF**  
 at 2000 FT and hold or as  
 directed by ATC.



ELEV 62 FT  
(THR RWY 23)

NM FM THR 23 0 2.5 3.5 6.0 12.0

CHANGE: CHART TITLE.

OCA/H	A	B	C	D	NM to NEXT WPT	2.5 NM	3 NM	4 NM	5 NM	FAF		
LNAV	890 (828)				Altitude (Height)	890 (828)	1060 (998)	1375 (1313)	1690 (1628)	2000 (1938)		
					Ground Speed	knot	70	90	100	120	140	160
Circling (OCH AAL)	1180 (1098)		1280 (1198)		Rate of descent FAF - MAPt 5.2%	(ft/min)	369	474	527	632	737	843

**INSTRUMENT**                    **AERODROME ELEV 82 FT**  
**APPROACH**                    **HEIGHTS RELATED TO**  
**CHART - ICAO**                **THR RWY23 - ELEV 62 FT**

**TART / Trat (VTBO)**  
**RNP RWY23**

**TABULAR DESCRIPTION**

**RNP RWY23**

Serial Number	Path Descriptor	Waypoint Identifier	Flyover	Course ° M (° T)	Magnetic Variation	Distance (NM)	Turn Direction	Altitude (FT)	Speed (KT)	VPA/ TCH	Navigation Specification
010	IF	SUNDA (IAF)	-	-	+0.60	-	-	+7000	-	-	RNP APCH
020	TF	KUGAR	-	037°(036.32°)	+0.60	29.8	-	+6000	-	-	RNP APCH
030	TF	NOVEM	-	037°(036.40°)	+0.60	10.0	L	+4100	- 230	-	RNP APCH
040	TF	FINZA (IF)	-	322°(321.30°)	+0.60	5.0	-	+3300	- 210	-	RNP APCH
010	IF	HUNSA (IAF)	-	-	+0.60	-	-	+7000	-	-	RNP APCH
020	TF	SEPPA	-	099°(098.54°)	+0.60	26.7	R	+4100	- 230	-	RNP APCH
030	TF	FINZA (IF)	-	142°(141.31°)	+0.60	5.0	-	+3300	- 210	-	RNP APCH
010	IF	FINZA (IF)	-	-	+0.60	-	-	+3300	- 210	-	RNP APCH
020	TF	SMART (FAF)	-	232°(231.32°)	+0.60	6.0	-	@2000	-	-	RNP APCH
030	TF	TDXNM (MAPt)	Y	232°(231.30°)	+0.60	6.0	-	@890	-	-	RNP APCH
040	CA	-	-	232°(231.30°)	+0.60	-	-	+1200	-	-	RNP APCH
050	DF	SMART (FAF)	-	-	+0.60	-	R	+2000	-	-	RNP APCH
060	HM	SMART (FAF)	Y	232°(231.32°)	+0.60	1 minute	R	+2000	- 230	-	RNP APCH

**WAYPOINT LIST**

**RNP RWY23**

Waypoint Identifier	Coordinates	
SUNDA	11° 48' 14.01" N	102° 08' 14.08" E
KUGAR	12° 12' 21.61" N	102° 26' 16.32" E
NOVEM	12° 20' 25.98" N	102° 32' 19.57" E
HUNSA	12° 32' 15.73" N	101° 59' 00.42" E
SEPPA	12° 28' 15.82" N	102° 25' 56.90" E
FINZA	12° 24' 20.91" N	102° 29' 08.28" E
SMART	12° 20' 35.16" N	102° 24' 21.55" E
TDXNM (THR23)	12° 16' 49.30" N	102° 19' 34.94" E

CHANGE : CHART TITLE.