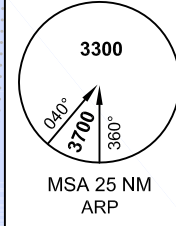
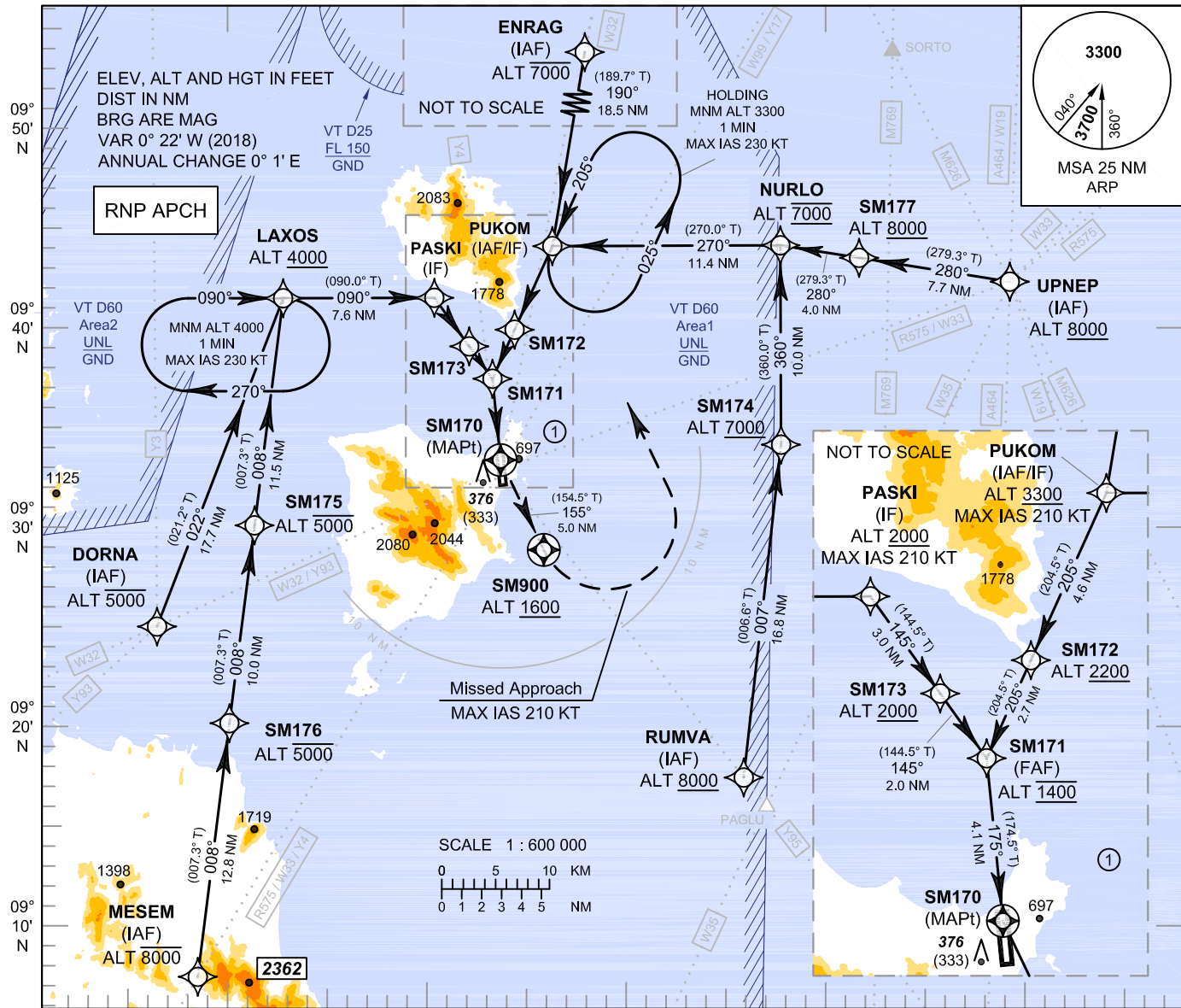


INSTRUMENT APPROACH CHART - ICAO

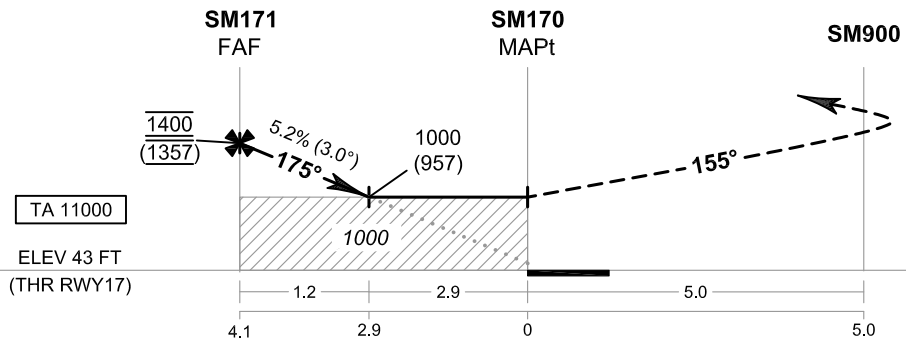
AERODROME ELEV 64 FT
 HEIGHTS RELATED TO THR RWY17 - ELEV 43 FT

APP : 129.6
 TWR : 118.9
 GND : 121.9
 ATIS : 128.6

SURAT THANI / Samui (VTSM)
RNAV (GNSS) RWY17
CAT A, B



099° 50' E 100° 00' E 100° 10' E 100° 20' E 100° 30' E



MISSED APPROACH :
No turn before MAPt.
Speed restricted to MAX IAS 210 KT
 until after turn.
 At MAPt, turn left climb on track 155° to SM900, then turn left direct to PUKOM at minimum 3300 FT and hold or as directed by ATC.

CHANGE: NEW PROCEDURES. INTERMEDIATE APPROACH SEGMENT - NO HORIZONTAL DISTANCE 1.0 NM DUE TO TERRAIN RESTRICTIONS.

OCA/H	A	B	NM to NEXT WPT	FAF	4 NM	3 NM	2.9 NM			
LNAV	1000 (957)		Altitude (Height)	1400 (1357)	1355 (1312)	1040 (997)	1000 (957)			
Circling* (OCH AAL)	1400 (1336)		Ground Speed	knot	70	90	100	120	140	160
* FOR CIRCLING RESTRICTIONS SEE VERSO.			Rate of Descent FAF - MAPt 5.2%	ft/min	369	474	527	632	737	843