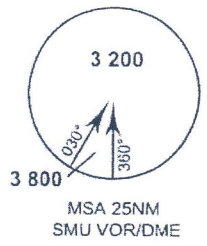
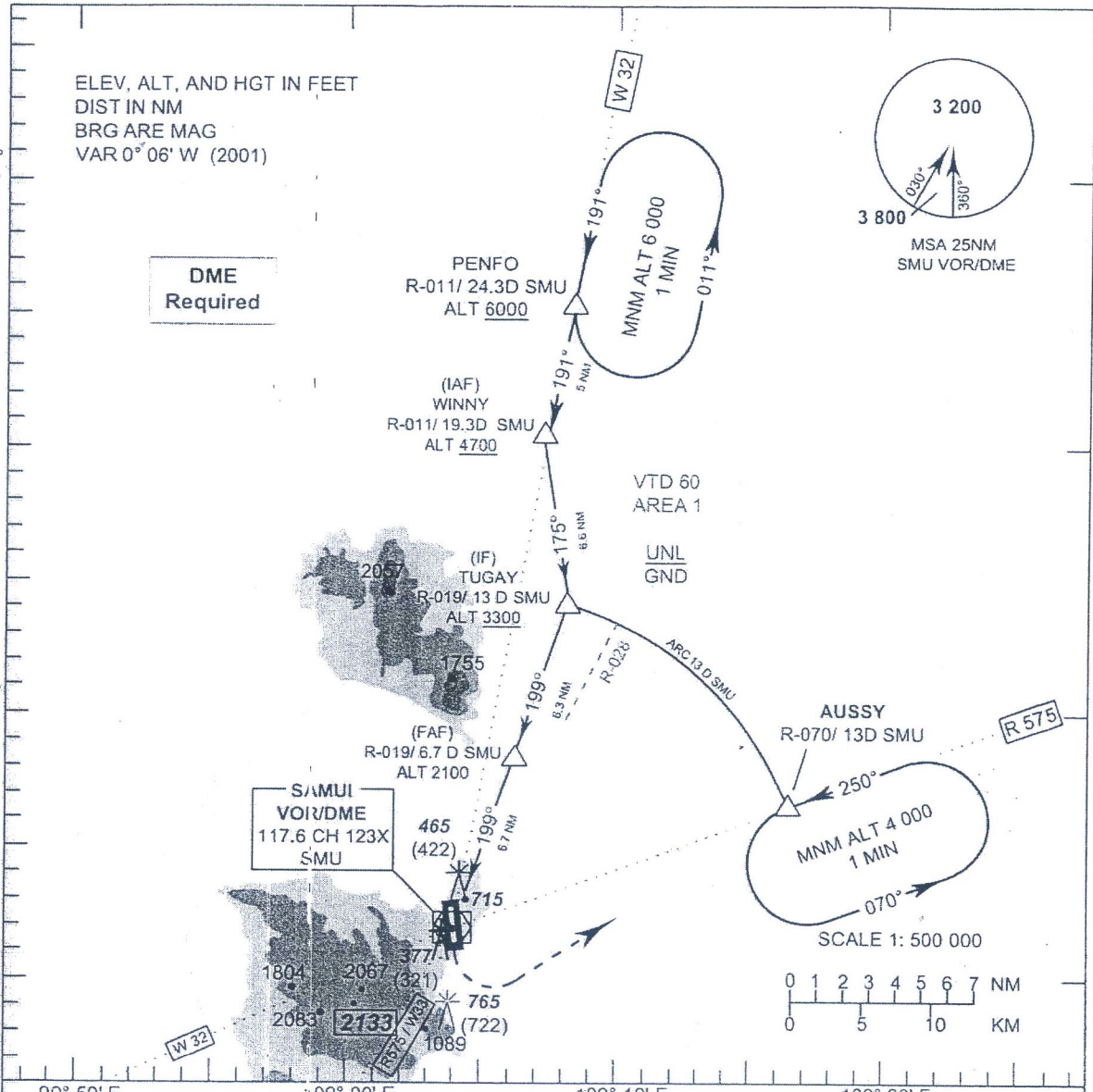


ELEV, ALT, AND HGT IN FEET
 DIST IN NM
 BRG ARE MAG
 VAR 0° 06' W (2001)

DME Required



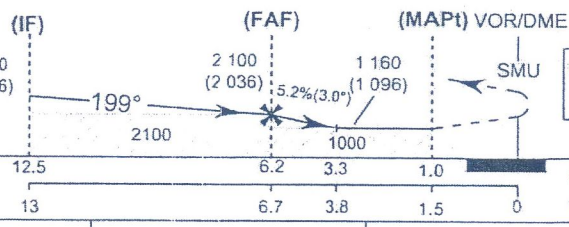
10° 00' N
 09° 50' N
 09° 40' N
 09° 30' N



99° 50' E 100° 00' E 100° 10' E 100° 20' E

TA 11 000

Missed Approach :
 Climb straight ahead to SMU VOR, then turn left to intercept R-070 (SMU) proceed to AUSSY continue climb to 4000 FT and hold or as directed by ATC.



Remark: During trial, operate under VMC only and reduce max cross wind limitation by 10 knots.

OCA/H	C	Distance(SMU)	6.7 DME	6 DME	5 DME	3.8 DME			
Straight-in approach	NOT AUTHORIZED	Altitude (Height)	2100 (2036)	1870 (1806)	1550 (1486)	1160 (1096)			
		Ground Speed (GS)	knot	100	120	140	160	180	200
Circling* (OCH AAL)	1160 (1096)	FAF-MAPT 5.2 NM	(min/s)	3:07	2:36	2:14	1:57	1:44	1:34
* FOR CIRCLING RESTRICTIONS SEE VERSO		Rate of descent	(ft/min)	530	640	745	850	955	1 060