

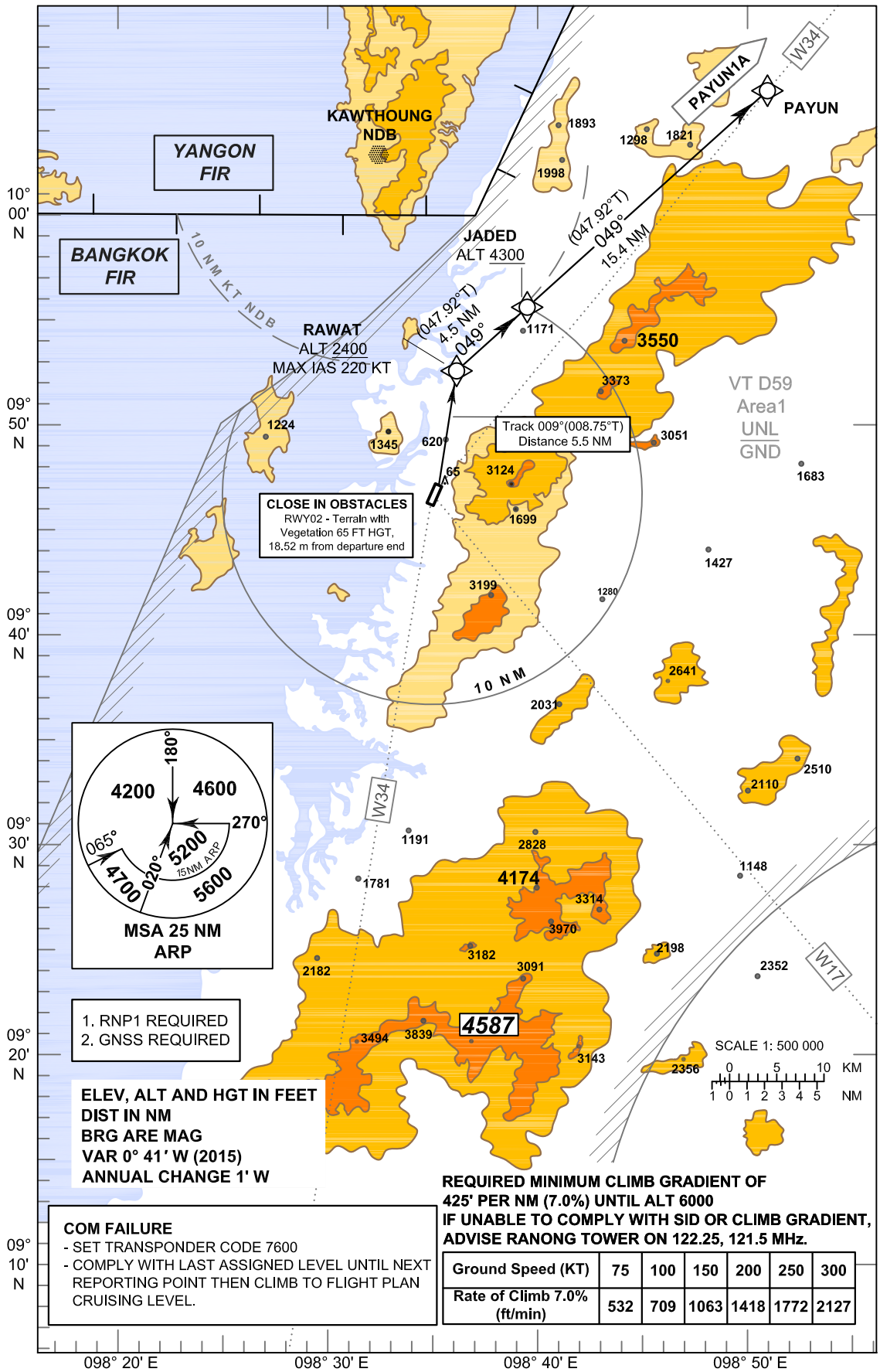
**STANDARD DEPARTURE CHART - INSTRUMENT (SID) - ICAO**

TRANSITION ALTITUDE  
11000 FT

APP : 125.1  
TWR : 122.25 , 121.5

**RANONG / Ranong (VTSR)  
RNAV RWY02**

PAYUN1A



**YANGON FIR**

**KAWTHOUNG NDB**

**BANGKOK FIR**

**RAWAT**  
ALT 2400  
MAX IAS 220 KT

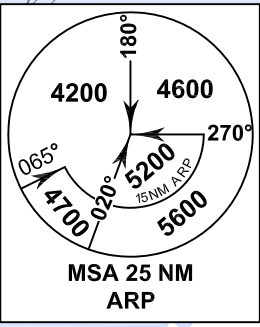
**JADED**  
ALT 4300

**3550**

VT D59  
Area1  
UNL  
GND

**CLOSE IN OBSTACLES**  
RWY02 - Terrain with  
Vegetation 65 FT HGT,  
18.52 m from departure end

Track 009°(008.75°T)  
Distance 5.5 NM



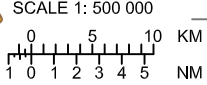
- 1. RNP1 REQUIRED
- 2. GNSS REQUIRED

**ELEV, ALT AND HGT IN FEET  
DIST IN NM  
BRG ARE MAG  
VAR 0° 41' W (2015)  
ANNUAL CHANGE 1' W**

**COM FAILURE**  
- SET TRANSPONDER CODE 7600  
- COMPLY WITH LAST ASSIGNED LEVEL UNTIL NEXT  
REPORTING POINT THEN CLIMB TO FLIGHT PLAN  
CRUISING LEVEL.

**REQUIRED MINIMUM CLIMB GRADIENT OF  
425' PER NM (7.0%) UNTIL ALT 6000  
IF UNABLE TO COMPLY WITH SID OR CLIMB GRADIENT,  
ADVISE RANONG TOWER ON 122.25, 121.5 MHz.**

Ground Speed (KT)	75	100	150	200	250	300
Rate of Climb 7.0% (ft/min)	532	709	1063	1418	1772	2127



09° 10' N

09° 30' N

09° 40' N

09° 50' N

10° 00' N

098° 20' E

098° 30' E

098° 40' E

098° 50' E