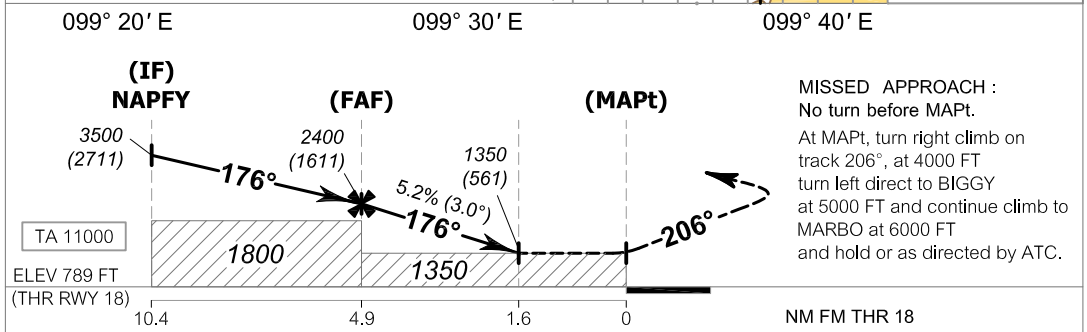
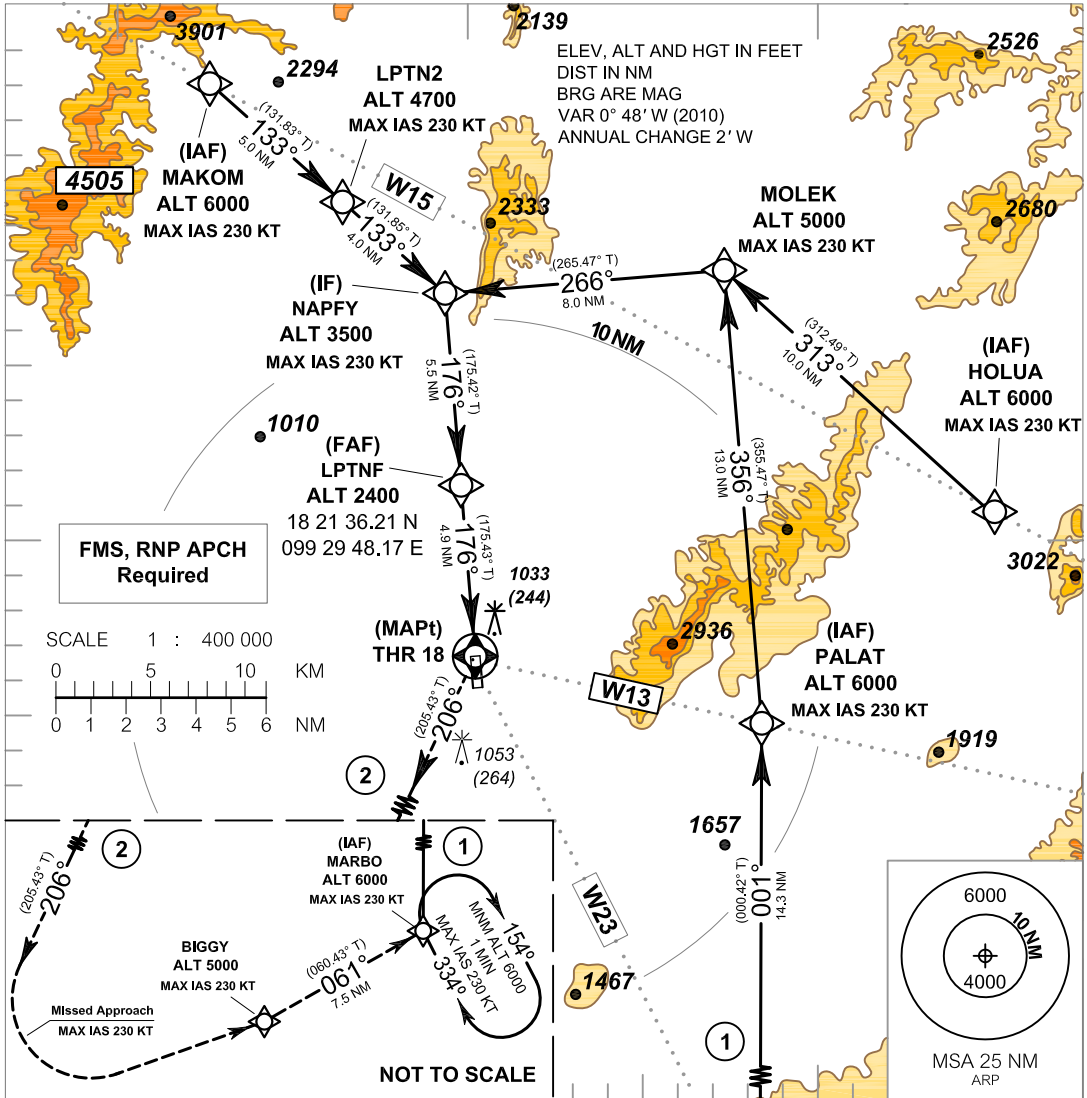


**INSTRUMENT AERODROME ELEV 811 FT**  
**APPROACH HEIGHTS RELATED TO**  
**CHART - ICAO THR RWY 18 ELEV 789 FT**

APP : 119.3  
 TWR : 122.3 , 236.6

**LAMPANG / Lampang (VTCL)**  
**RNAV (GNSS) RWY18**



**MISSED APPROACH :**  
 No turn before MAPt.  
 At MAPt, turn right climb on track 206°, at 4000 FT turn left direct to BIGGY at 5000 FT and continue climb to MARBO at 6000 FT and hold or as directed by ATC.

OCA/H	A	B	C	D	NM to THR 18	FAF	4 NM	3 NM	2 NM	1.6 NM		
LNAV	1350 (561)				Altitude (Height)	2400 (1611)	2115 (1326)	1795 (1006)	1475 (686)	1350 (561)		
					Ground speed	knot	70	90	100	120	140	160
Circling (OCH AAL)	1350 (539)		1500 (689)		Rate of descent	(ft/min)	369	474	527	632	737	843

REMARK : FOR CIRCLING RESTRICTION SEE VERSO