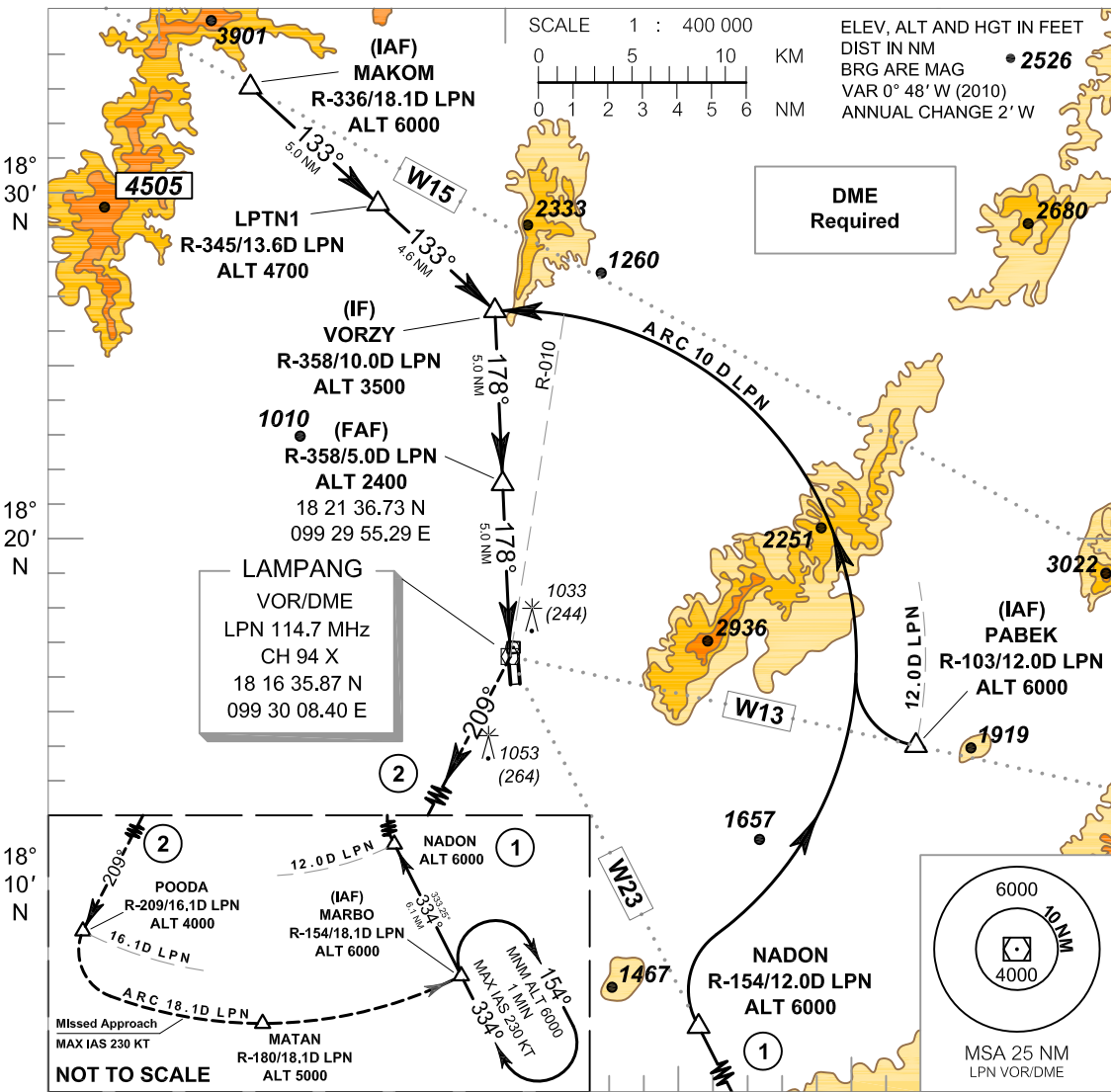


INSTRUMENT APPROACH CHART - ICAO

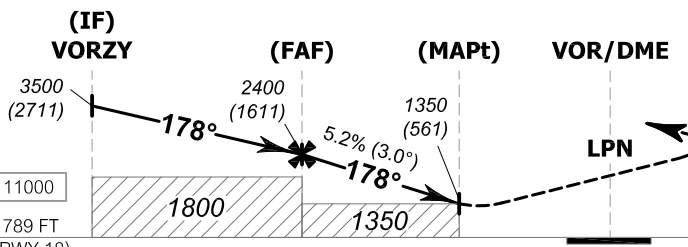
AERODROME ELEV 811 FT
HEIGHTS RELATED TO THR RWY 18 ELEV 789 FT

APP : 119.3
 TWR : 122.3 , 236.6

LAMPANG / Lampang (VTCL)
VOR RWY18



099° 20' E 099° 30' E 099° 40' E



MISSED APPROACH :
 Climb straight ahead to LPN VOR then turn right to intercept R-209 LPN VOR and continue climb to POODA at 4000 FT then turn left to intercept arc 18.1D LPN VOR and climb to MATAN at 5000 FT then continue climb to MARBO at 6000 FT and hold or as directed by ATC.

OCA/H	A	B	C	D	Distance (LPN)						
					FAF	4D	3D	2D	MAPt		
Straight - in approach	1350 (561)				Altitude (Height)	2400 (1611)	2080 (1291)	1760 (971)	1445 (656)	1350 (561)	
	Ground speed	knot	70	90	100	120	140	160			
Circling (OCH AAL)	1350 (539)		1500 (689)		Rate of descent (ft/min)	369	474	527	632	737	843

REMARK : FOR CIRCLING RESTRICTION SEE VERSO