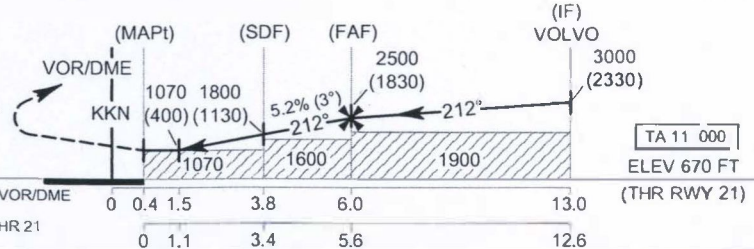


MISSED APPROACH :

No turn before MAPt.
Climb straight ahead to 1500 (830) FT
then turn left to intercept R-032 KKN VOR
then proceed to IF at 3000 (2330) FT
and hold or as directed by ATC.



OCA/H	A	B	C	D	Distance to KKN	1.5 D	2 D	3 D	4 D	5 D	FAF	
						Altitude (Height)	Ground speed (GS)	Rate of descent	1070 (400)	1225 (555)	1540 (870)	1860 (1190)
Straight-in Approach					1070 (400)	Knot	100	120	140	160	180	200
Circling (OCH AAL)					1600 (930)	(ft/min)	530	630	740	845	950	1055