

**STANDARD DEPARTURE CHART-
INSTRUMENT (SID) - ICAO**

TRANSITION ALTITUDE
11000 FT

SPEED RESTRICTION
MAX IAS 250 KT AT OR
BELOW ALT 10000 FT
UNLESS OTHERWISE
AUTHORIZED BY ATC.

APP : 119.7 , 134.5
: 238.3 , 273.3
TWR : 118.1 , 118.3
: 227.0
GND : 121.9 , 275.8

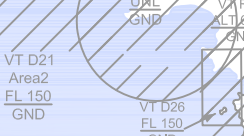
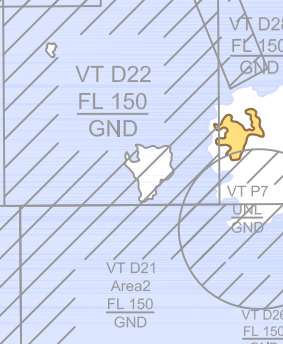
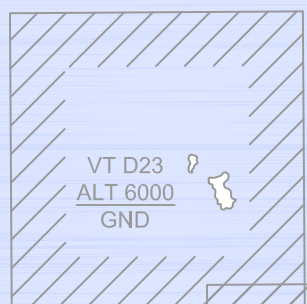
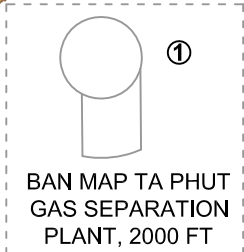
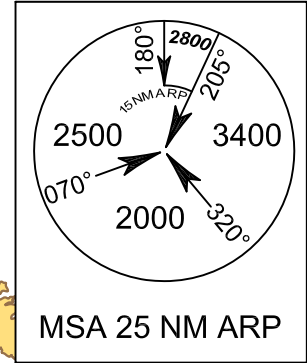
**RAYONG / U-TAPAO RAYONG
PATTAYA Intl (VTBU)
RNAV RWY36**

BKK1B

ELEV, ALT, AND HGT IN FEET
DIST IN NM
BRG ARE MAG
VAR 0.55° W (2016)
ANNUAL CHANGE 0.00° E

NO TURN BEFORE DER

- 1. RNP1 REQUIRED
- 2. GNSS REQUIRED



- COM FAILURE**
1. SET TRANSPONDER CODE 7600.
 2. PROCEED ON SID, COMPLY WITH LAST ASSIGNED LEVEL OR MFA WHICHEVER IS HIGHER UNTIL THE LAST WAYPOINT OF THE PROCEDURE THEN CLIMB TO FLIGHT PLAN CRUISING LEVEL.

**REQUIRE MINIMUM CLIMB GRADIENT OF
365 FT PER NM (6.0%) UNTIL PASSING FL 230
FOR AIRSPACE RESTRICTIONS ONLY.
IF UNABLE TO COMPLY WITH SID OR CLIMB GRADIENT,
ADVISE U-TAPAO APPROACH ON 119.7 MHz.**

Ground Speed (KT)	75	100	150	200	250	300
Rate of Climb (ft/min)	456	608	912	1215	1519	1823

