

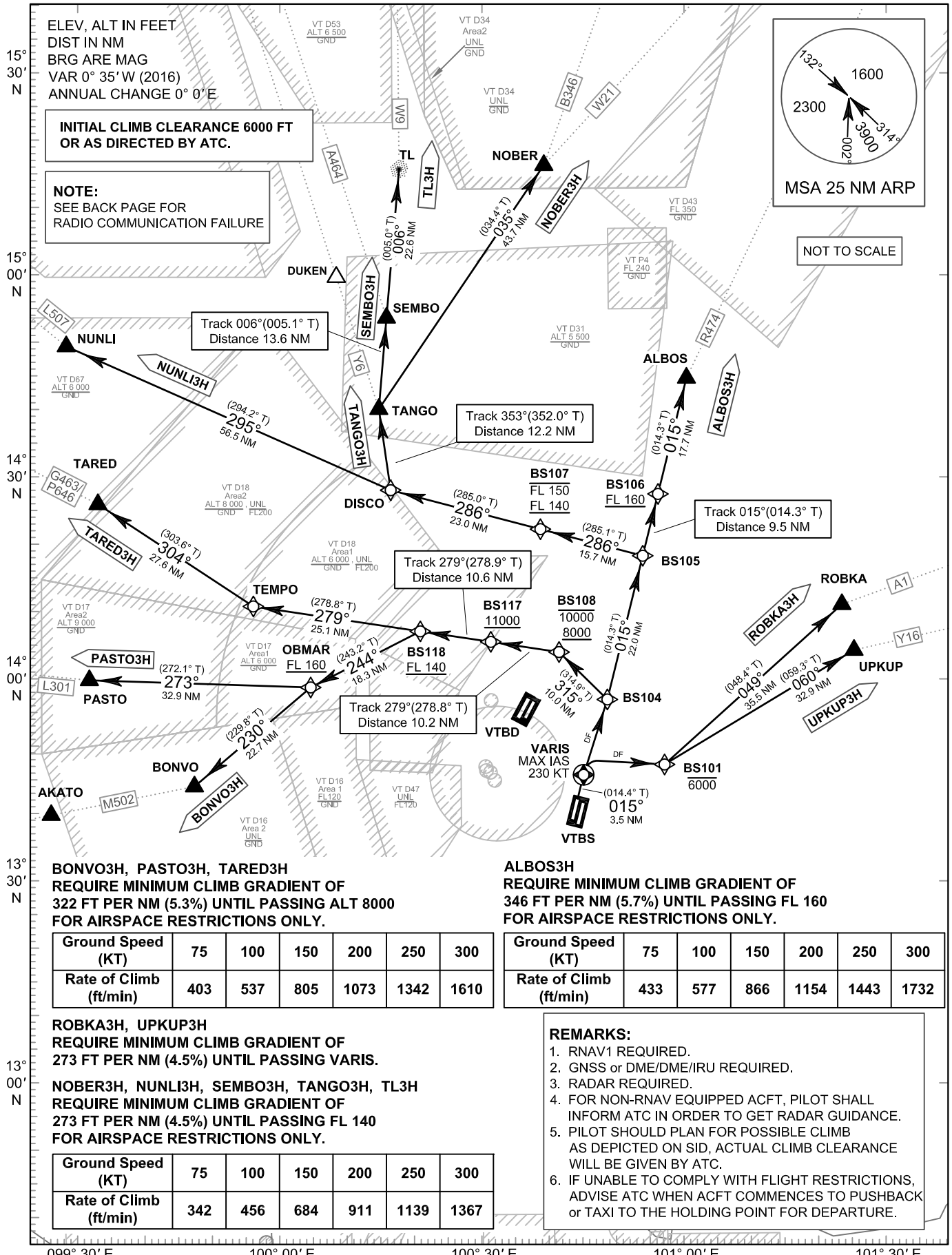
**STANDARD DEPARTURE CHART-
INSTRUMENT (SID) - ICAO**

TRANSITION ALTITUDE 11000 FT
SPEED RESTRICTION MAX IAS 250 KT AT OR BELOW ALT 10000 FT UNLESS OTHERWISE AUTHORIZED BY ATC.

APP :	119.1, 262.5
	: 120.3, 262.5
	: 121.7, 262.5
	: 122.35, 262.5
	: 124.35, 262.5
	: 125.2, 262.5
ARR :	121.1
	: 126.3
TWR :	118.2, 274.5
	: 119.0
ATIS :	133.6, 278.6

**BANGKOK/Suvarnabhumi Intl (VTBS)
RNAV RWY01L**

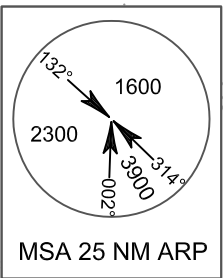
ALBOS3H BONVO3H
NOBER3H NUNLI3H PASTO3H
ROBKA3H SEMBO3H TANGO3H
TARED3H TL3H UPKUP3H



ELEV, ALT IN FEET
DIST IN NM
BRG ARE MAG
VAR 0° 35' W (2016)
ANNUAL CHANGE 0° 0'E

**INITIAL CLIMB CLEARANCE 6000 FT
OR AS DIRECTED BY ATC.**

**NOTE:
SEE BACK PAGE FOR
RADIO COMMUNICATION FAILURE**



NOT TO SCALE

**BONVO3H, PASTO3H, TARED3H
REQUIRE MINIMUM CLIMB GRADIENT OF
322 FT PER NM (5.3%) UNTIL PASSING ALT 8000
FOR AIRSPACE RESTRICTIONS ONLY.**

Ground Speed (KT)	75	100	150	200	250	300
Rate of Climb (ft/min)	403	537	805	1073	1342	1610

**ALBOS3H
REQUIRE MINIMUM CLIMB GRADIENT OF
346 FT PER NM (5.7%) UNTIL PASSING FL 160
FOR AIRSPACE RESTRICTIONS ONLY.**

Ground Speed (KT)	75	100	150	200	250	300
Rate of Climb (ft/min)	433	577	866	1154	1443	1732

**ROBKA3H, UPKUP3H
REQUIRE MINIMUM CLIMB GRADIENT OF
273 FT PER NM (4.5%) UNTIL PASSING VARIS.**

**NOBER3H, NUNLI3H, SEMBO3H, TANGO3H, TL3H
REQUIRE MINIMUM CLIMB GRADIENT OF
273 FT PER NM (4.5%) UNTIL PASSING FL 140
FOR AIRSPACE RESTRICTIONS ONLY.**

Ground Speed (KT)	75	100	150	200	250	300
Rate of Climb (ft/min)	342	456	684	911	1139	1367

- REMARKS:**
1. RNAV1 REQUIRED.
 2. GNSS or DME/DME/IRU REQUIRED.
 3. RADAR REQUIRED.
 4. FOR NON-RNAV EQUIPPED ACFT, PILOT SHALL INFORM ATC IN ORDER TO GET RADAR GUIDANCE.
 5. PILOT SHOULD PLAN FOR POSSIBLE CLIMB AS DEPICTED ON SID, ACTUAL CLIMB CLEARANCE WILL BE GIVEN BY ATC.
 6. IF UNABLE TO COMPLY WITH FLIGHT RESTRICTIONS, ADVISE ATC WHEN ACFT COMMENCES TO PUSHBACK or TAXI TO THE HOLDING POINT FOR DEPARTURE.

CHANGE: NEW PROCEDURES.