

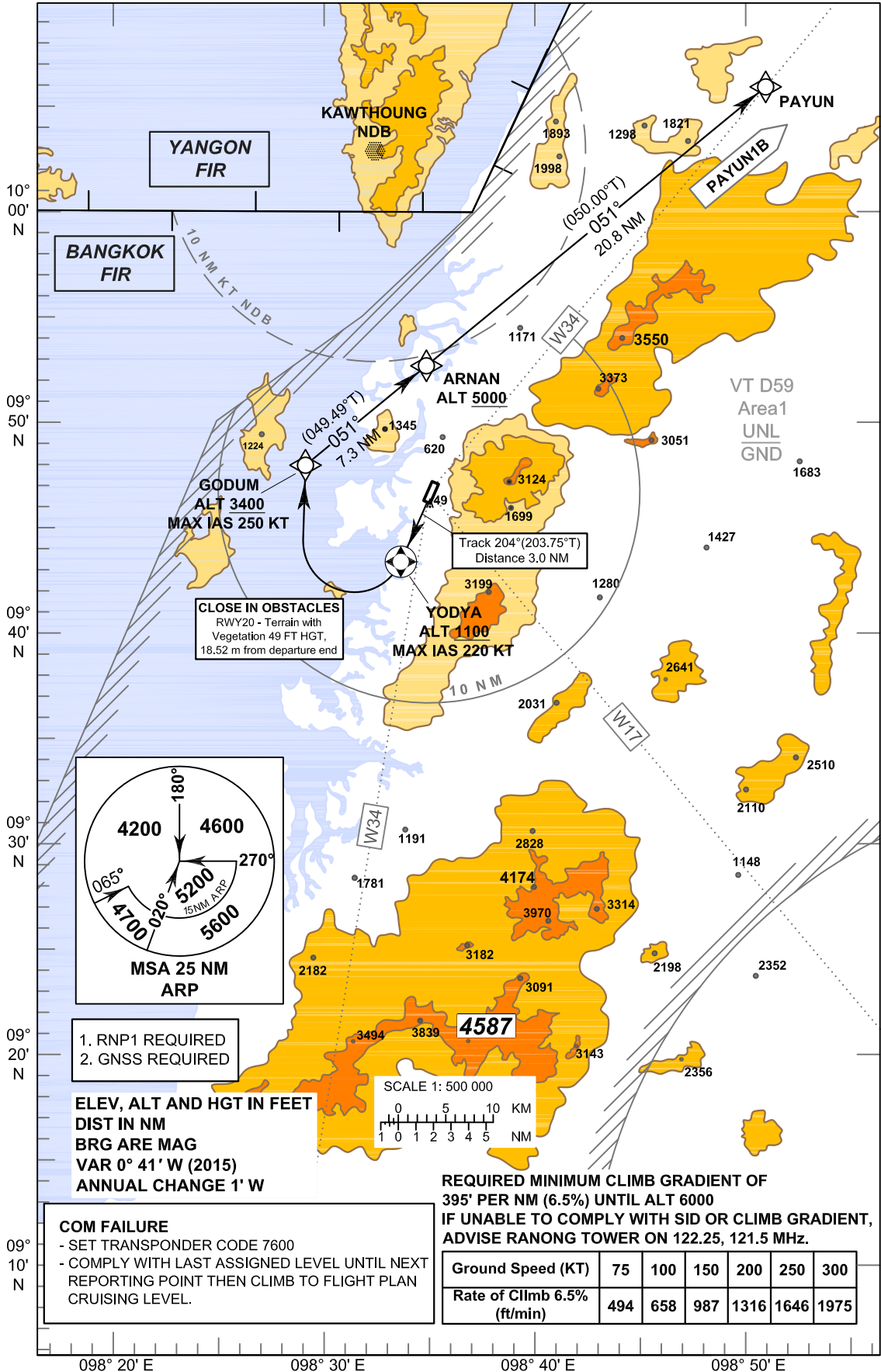
**STANDARD DEPARTURE CHART -
INSTRUMENT (SID) - ICAO**

TRANSITION ALTITUDE
11000 FT

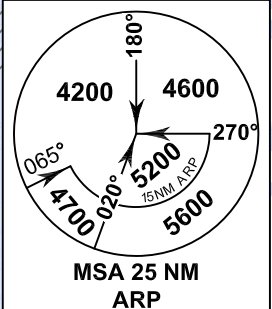
APP : 125.1
TWR : 122.25 , 121.5

**RANONG / Ranong (VTSR)
RNAV RWY20**

PAYUN1B

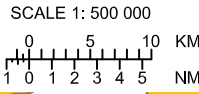


CLOSE IN OBSTACLES
RWY20 - Terrain with
Vegetation 49 FT HGT,
18.52 m from departure end



- 1. RNP1 REQUIRED
- 2. GNSS REQUIRED

**ELEV, ALT AND HGT IN FEET
DIST IN NM
BRG ARE MAG
VAR 0° 41' W (2015)
ANNUAL CHANGE 1' W**



**REQUIRED MINIMUM CLIMB GRADIENT OF
395' PER NM (6.5%) UNTIL ALT 6000
IF UNABLE TO COMPLY WITH SID OR CLIMB GRADIENT,
ADVISE RANONG TOWER ON 122.25, 121.5 MHz.**

Ground Speed (KT)	75	100	150	200	250	300
Rate of Climb 6.5% (ft/min)	494	658	987	1316	1646	1975

COM FAILURE
- SET TRANSPONDER CODE 7600
- COMPLY WITH LAST ASSIGNED LEVEL UNTIL NEXT REPORTING POINT THEN CLIMB TO FLIGHT PLAN CRUISING LEVEL.