

**STANDARD DEPARTURE CHART-  
INSTRUMENT (SID) - ICAO**

TRANSITION ALTITUDE  
11000 FT

SPEED RESTRICTION  
MAX IAS 250 KT AT OR  
BELOW ALT 10000 FT  
UNLESS OTHERWISE  
AUTHORIZED BY ATC.

APP : 119.1, 262.5  
: 119.4, 262.5  
: 120.3, 262.5  
: 121.7, 262.5  
: 122.35, 262.5  
: 124.35, 262.5  
: 125.2, 262.5  
DAR : 125.5, 262.5  
TWR : 118.1, 236.6  
ATIS : 126.4, 344.6

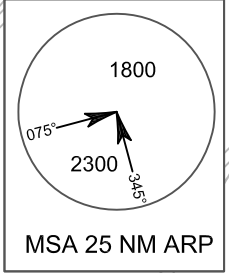
**BANGKOK/Don Mueang Intl (VTBD)  
RNAV RWY21R**

ALBOS3A BONVO3A  
NOBER3A NUNLI3A PASTO3A  
ROBKA3A SEMBO3A TANGO3A  
TARED3A TL3A UPKUP3A

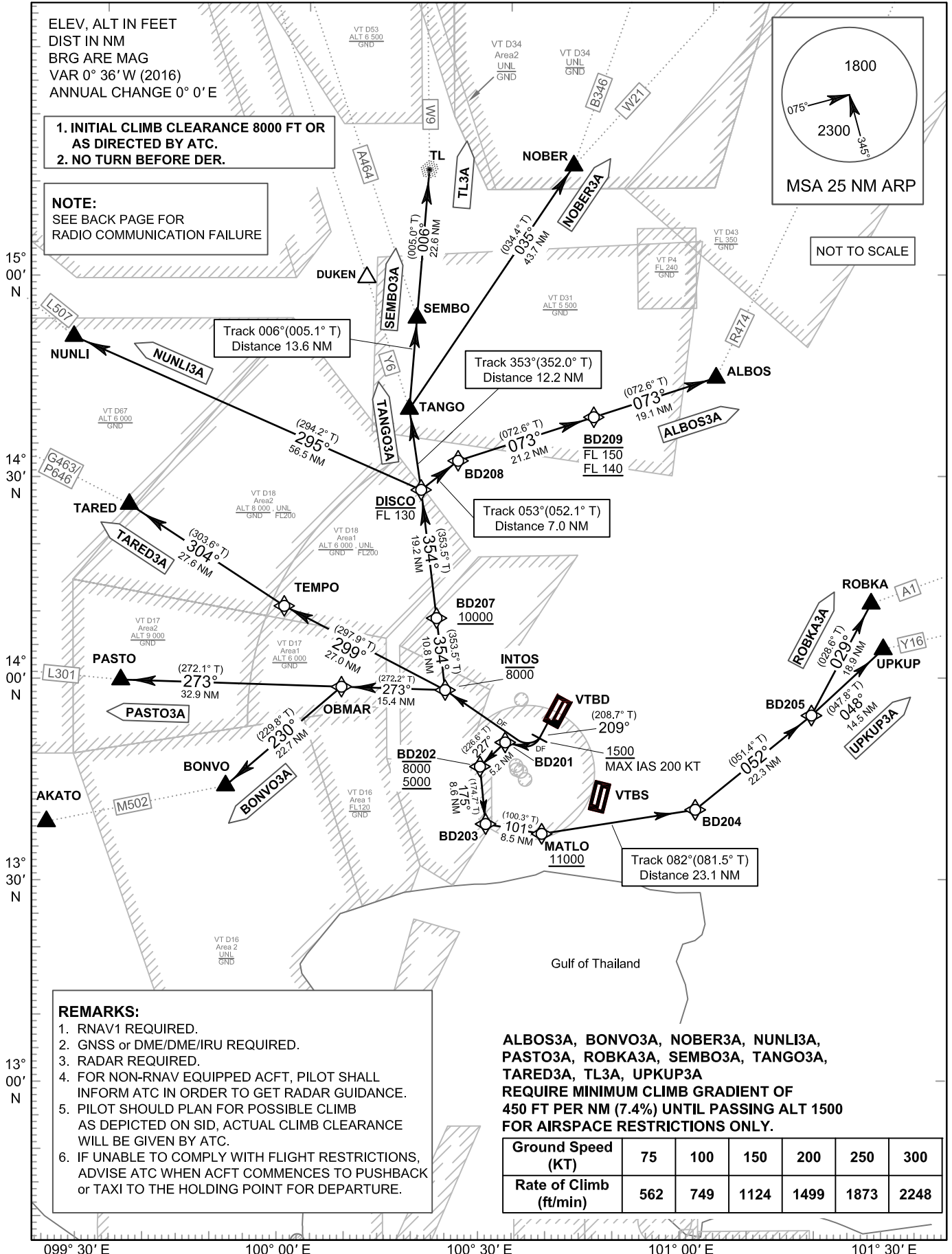
ELEV, ALT IN FEET  
DIST IN NM  
BRG ARE MAG  
VAR 0° 36' W (2016)  
ANNUAL CHANGE 0° 0' E

- INITIAL CLIMB CLEARANCE 8000 FT OR AS DIRECTED BY ATC.
- NO TURN BEFORE DER.

**NOTE:**  
SEE BACK PAGE FOR  
RADIO COMMUNICATION FAILURE



NOT TO SCALE



**REMARKS:**

- RNAV1 REQUIRED.
- GNSS or DME/DME/IRU REQUIRED.
- RADAR REQUIRED.
- FOR NON-RNAV EQUIPPED ACFT, PILOT SHALL INFORM ATC IN ORDER TO GET RADAR GUIDANCE.
- PILOT SHOULD PLAN FOR POSSIBLE CLIMB AS DEPICTED ON SID, ACTUAL CLIMB CLEARANCE WILL BE GIVEN BY ATC.
- IF UNABLE TO COMPLY WITH FLIGHT RESTRICTIONS, ADVISE ATC WHEN ACFT COMMENCES TO PUSHBACK or TAXI TO THE HOLDING POINT FOR DEPARTURE.

**ALBOS3A, BONVO3A, NOBER3A, NUNLI3A, PASTO3A, ROBKA3A, SEMBO3A, TANGO3A, TARED3A, TL3A, UPKUP3A REQUIRE MINIMUM CLIMB GRADIENT OF 450 FT PER NM (7.4%) UNTIL PASSING ALT 1500 FOR AIRSPACE RESTRICTIONS ONLY.**

Ground Speed (KT)	75	100	150	200	250	300
Rate of Climb (ft/min)	562	749	1124	1499	1873	2248

CHANGE: NEW PROCEDURES.