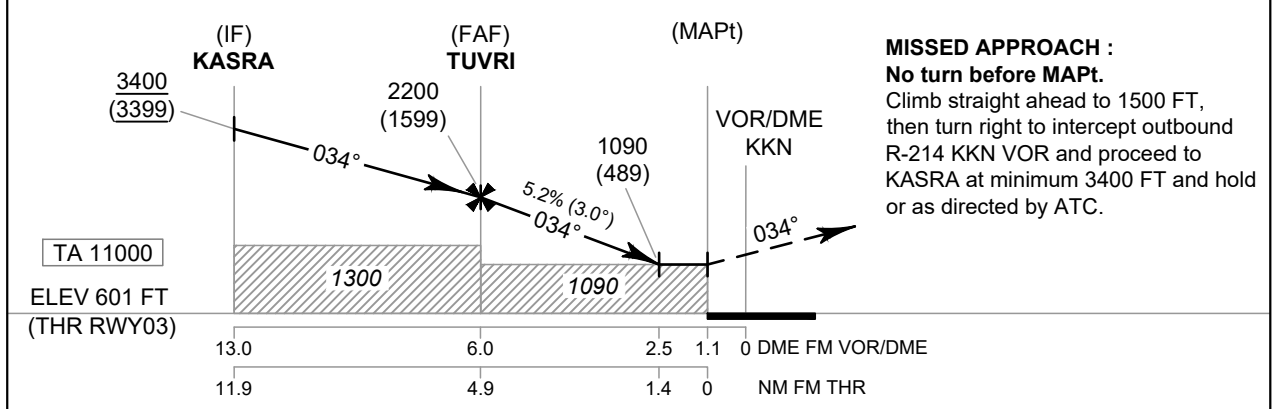
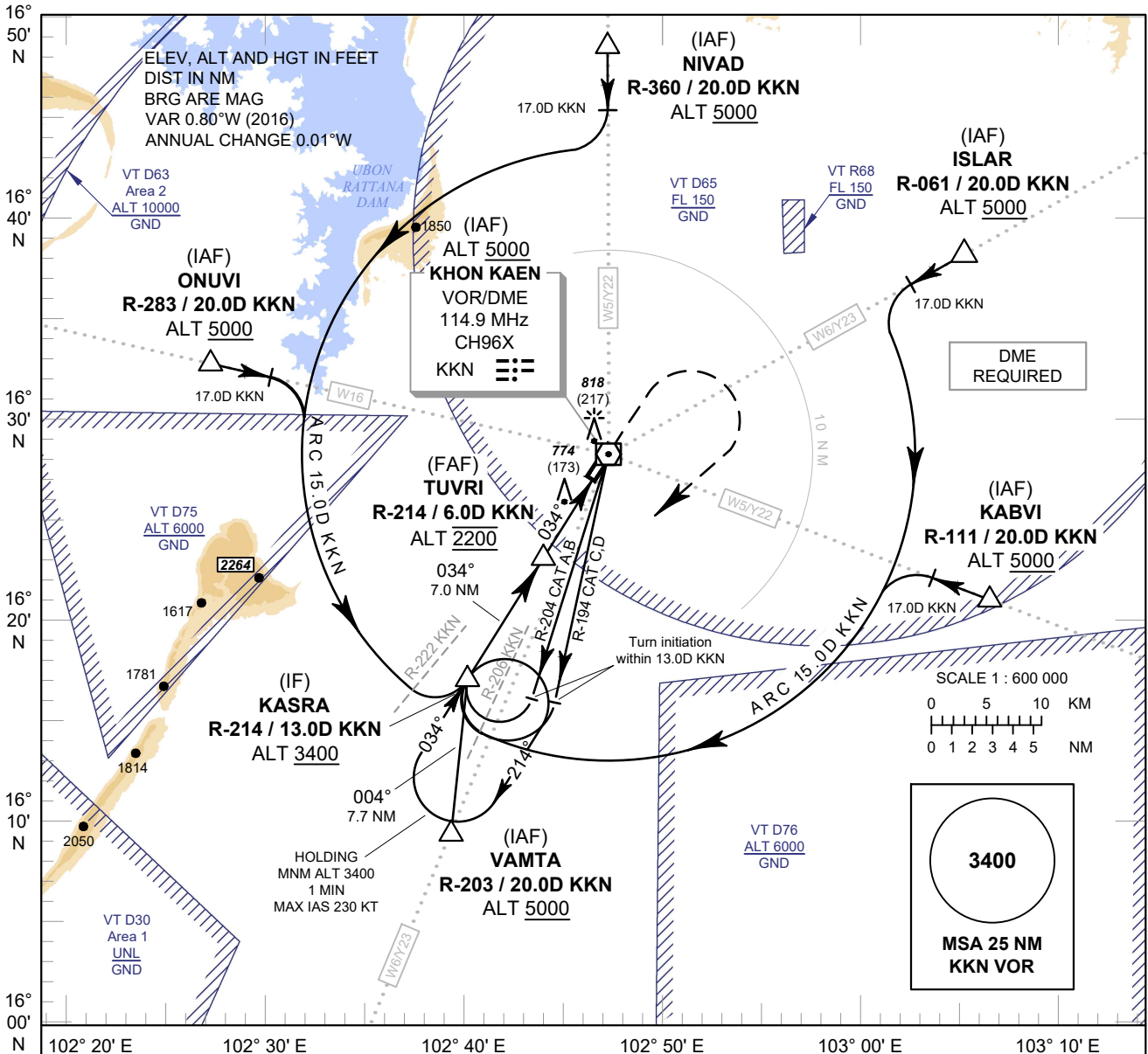


**INSTRUMENT  
APPROACH  
CHART - ICAO**

**AERODROME ELEV 670 FT  
HEIGHTS RELATED TO  
THR RWY03 - ELEV 601 FT**

APP : 123.4 , 240.0  
TWR : 122.25 , 236.6  
GND : 121.9  
ATIS : 126.85

**KHON KAEN /  
Khon Kaen (VTUK)  
VOR RWY03**



OCA/H	A	B	C	D	Distance (KKN)	FAF	5 D	4 D	3 D	2.5 D		
Straight-in Approach	1090 (489)				Altitude (Height)	2200 (1599)	1885 (1284)	1565 (964)	1250 (649)	1090 (489)		
					Ground Speed	knot	70	90	100	120	140	160
Circling (OCH AAL)	1500 (830)				Rate of Descent	ft/min	369	474	527	632	737	843

CHANGE: ROUTE Y22, Y23 ADDED.