

**STANDARD ARRIVAL CHART -  
INSTRUMENT (STAR) - ICAO**

TRANSITION ALTITUDE  
11000 FT

APP : 129.6 , 305.4  
TWR : 118.1 , 236.6  
GND : 121.9 , 275.8  
ATIS : 127.2 , 301.5

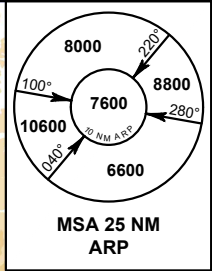
**CHIANG MAI / Chiang Mai Intl (VTCC)**

**RNAV RWY36**

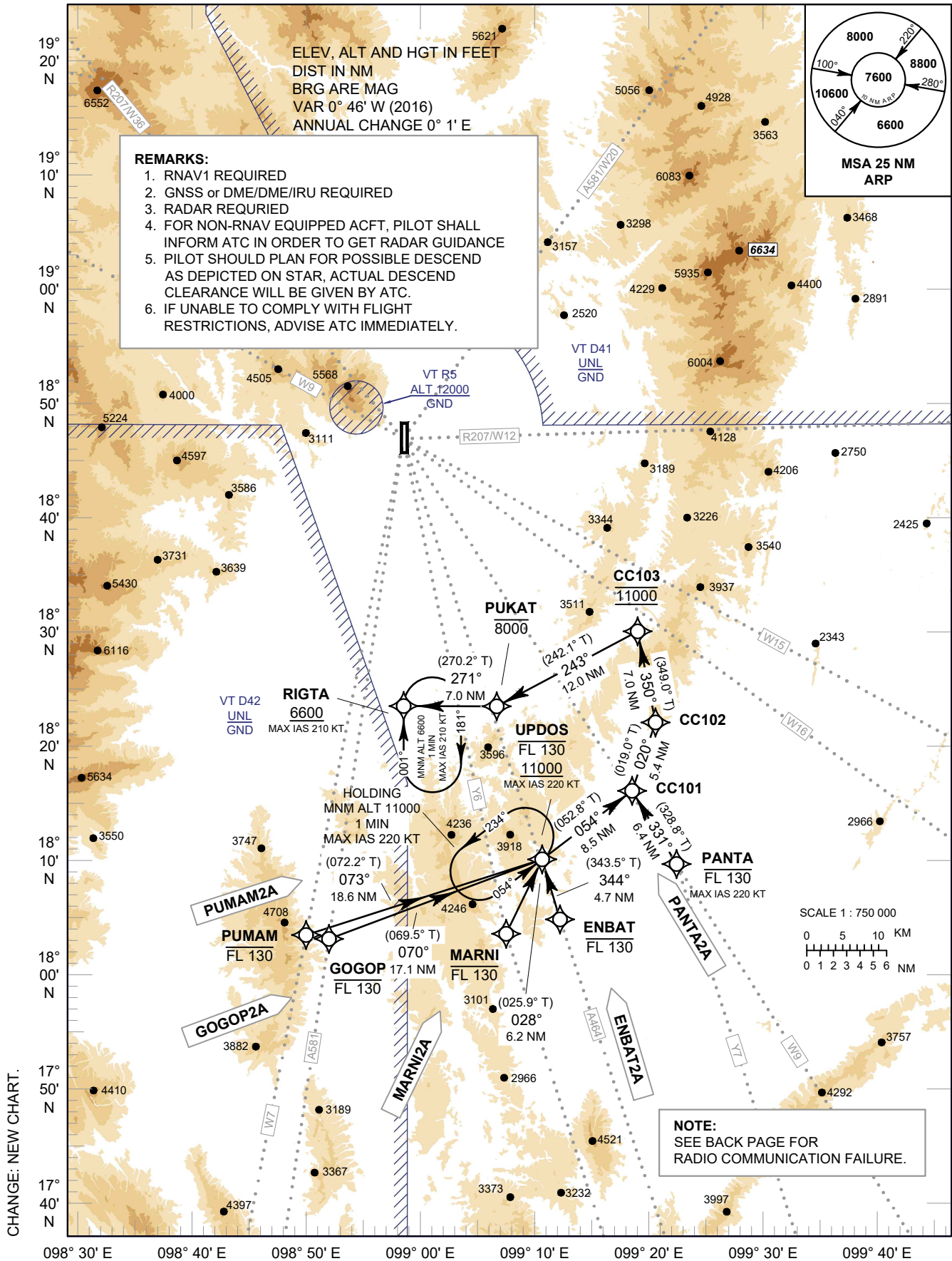
ENBAT2A GOGOP2A MARNI2A PANTA2A PUMAM2A

**REMARKS:**

1. RNAV1 REQUIRED
2. GNSS or DME/DME/IRU REQUIRED
3. RADAR REQUIRED
4. FOR NON-RNAV EQUIPPED ACFT, PILOT SHALL INFORM ATC IN ORDER TO GET RADAR GUIDANCE
5. PILOT SHOULD PLAN FOR POSSIBLE DESCEND AS DEPICTED ON STAR, ACTUAL DESCEND CLEARANCE WILL BE GIVEN BY ATC.
6. IF UNABLE TO COMPLY WITH FLIGHT RESTRICTIONS, ADVISE ATC IMMEDIATELY.



ELEV, ALT AND HGT IN FEET  
DIST IN NM  
BRG ARE MAG  
VAR 0° 46' W (2016)  
ANNUAL CHANGE 0° 1' E



CHANGE: NEW CHART.