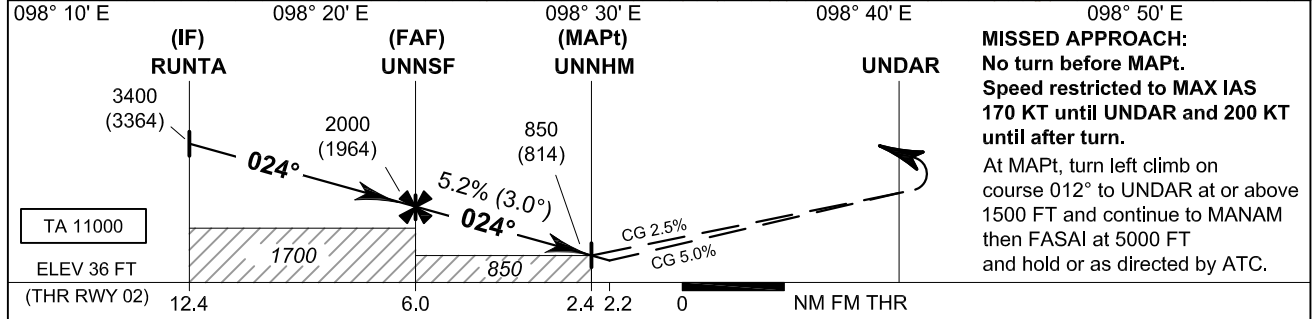
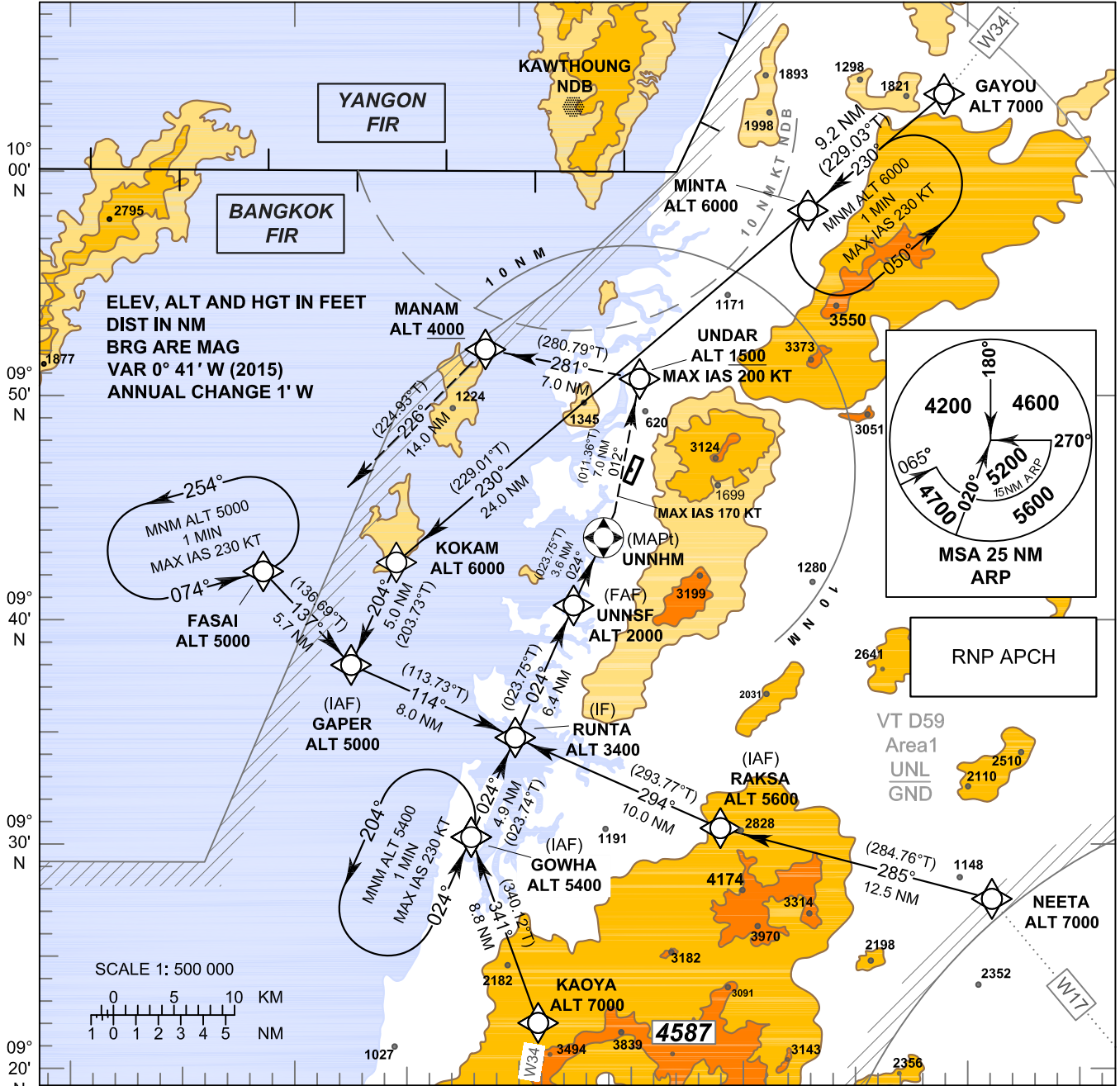


**INSTRUMENT
APPROACH
CHART - ICAO**

**AERODROME ELEV 57 FT
HEIGHTS RELATED TO
THR RWY 02 - ELEV 36 FT**

APP : 125.1
TWR : 122.25 , 236.6
ATIS : 126.475

**RANONG / Ranong (VTSR)
RNAV (GNSS) RWY02**



MISSED APPROACH:
No turn before MAPt.
Speed restricted to MAX IAS 170 KT until UNRAR and 200 KT until after turn.
At MAPt, turn left climb on course 012° to UNRAR at or above 1500 FT and continue to MANAM then FASAI at 5000 FT and hold or as directed by ATC.

OCA/H	A	B	C	D	NM to THR 02	FAF	5 NM	4 NM	3 NM	2.4 NM
LNAV	850 (814)				Altitude (Height)	2000 (1964)	1665 (1629)	1350 (1314)	1035 (999)	850 (814)
Circling (OCH AAL)	Not Authorized				Ground speed	knot	70	90	100	120
					Rate of descent	(ft/min)	369	474	527	632

NOTE : OCA (OCH): 780 (744) FT; MAPt at 2.2 NM FM THR can be achieved for all aircraft categories which can commence a missed approach climb gradient of 5.0% (304 FT/NM) until passing UNRAR.

CHANGE : TWR FREQUENCY. ATIS FREQUENCY ADDED.