

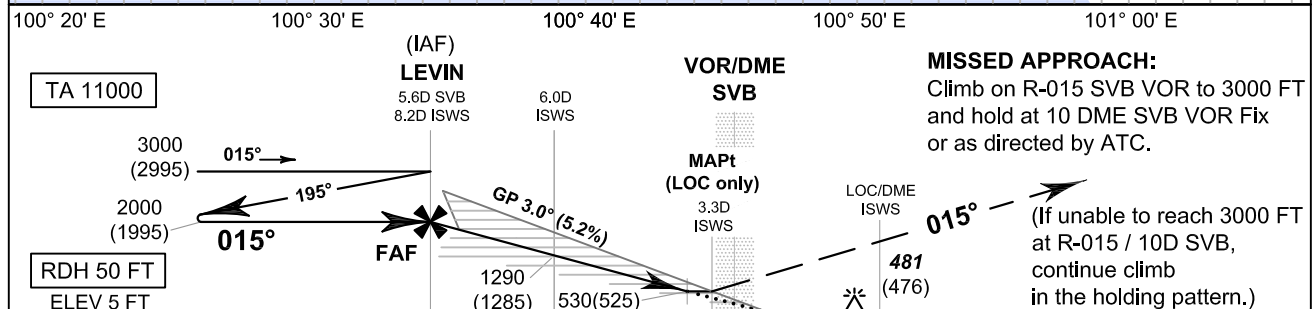
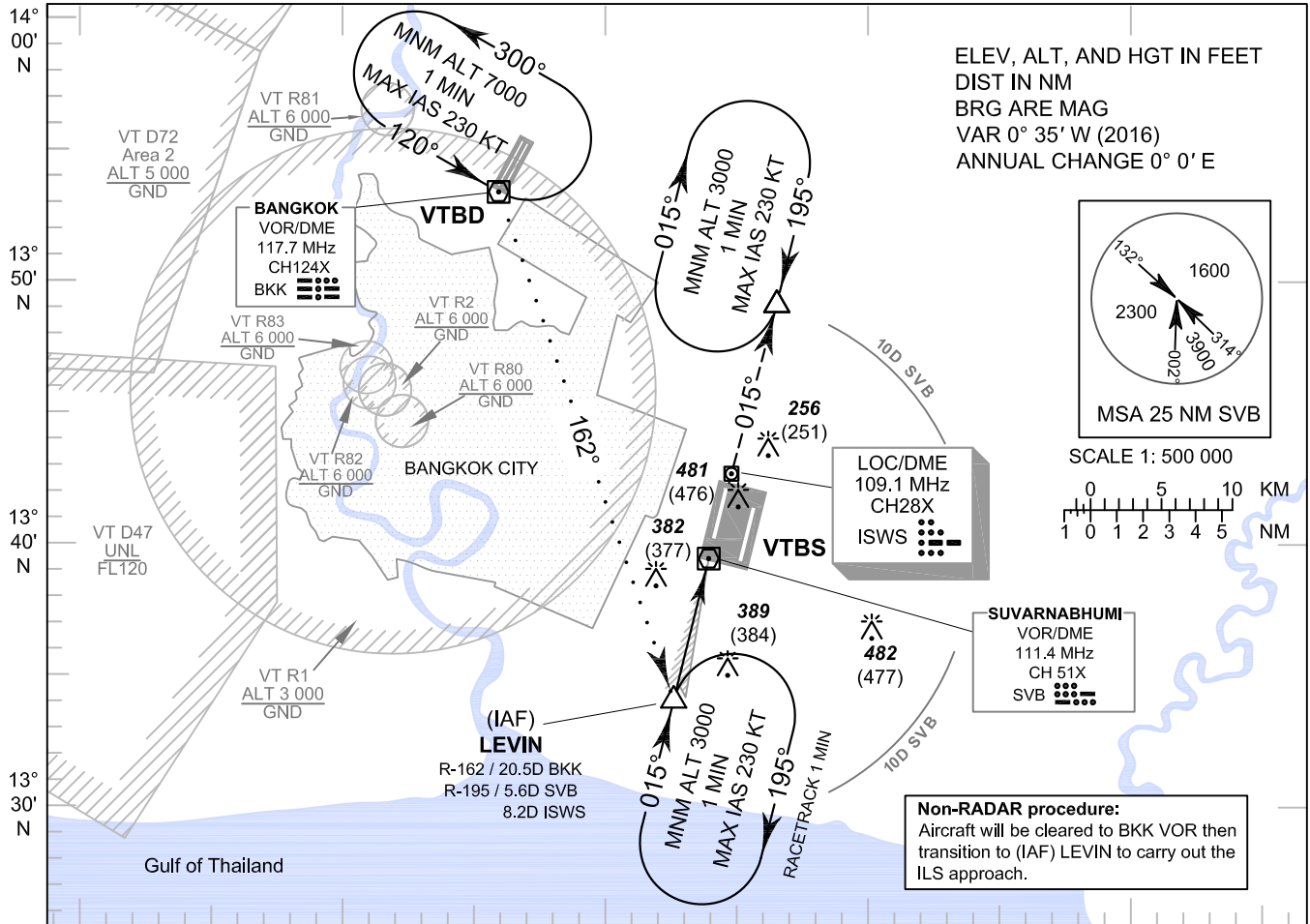
**INSTRUMENT
APPROACH
CHART - ICAO**

**AERODROME ELEV 5 FT
HEIGHTS RELATED TO
THR RWY01L - ELEV 5 FT**

BANGKOK / Suvarnabhumi Intl (VTBS)

**ILS or LOC y RWY01L
CAT II**

APP	: 119.1, 262.5
	: 120.3, 262.5
	: 128.95, 262.5
	: 122.35, 262.5
	: 124.35, 262.5
	: 125.2, 262.5
ARR	: 121.1
	: 126.3
TWR	: 118.2, 274.5
	: 119.0
ARR ATIS	: 133.6, 278.6



OCA/H		A	B	C	D	ISWS DME	FAF	8.0	7.0	6.0	5.0	4.0	MAPt
Straight-in Approach	CAT I		230 (225)*			Altitudes	2000	1920	1610	1290	970	650	530
	CAT II		105 (100)**			Speed / Knots			100	120	140	160	180
LOC only			530 (525)			FAF-MAPt 4.9 NM			2 : 56	2 : 27	2 : 06	1 : 50	1 : 38
Circling (OCH AAL)		800 (795)		900 (895)		Rate of descent (ft/min)			530	640	745	850	955

*These procedures require a missed approach climb gradient of 5% (304 FT/NM) until passing ALT 1000 FT. For aircraft which only achieve a 2.5% (152 FT/NM) climb gradient, the CAT I OCA (OCH) is 370 (365) FT
 **These procedures require a missed approach climb gradient of 4% (243 FT/NM) until passing ALT 1000 FT. For aircraft which only achieve a 2.5% (152 FT/NM) climb gradient, the CAT II OCA (OCH) is 295 (290) FT

CHANGE: APP FREQ. ARR ATIS ADDED.