

**STANDARD DEPARTURE CHART-  
INSTRUMENT (SID) - ICAO**

TRANSITION ALTITUDE 11000 FT
<b>SPEED RESTRICTION</b> MAX IAS 250 KT AT OR BELOW ALT 10000 FT UNLESS OTHERWISE AUTHORIZED BY ATC.

APP :	119.1, 262.5
	119.4, 262.5
	120.3, 262.5
	121.7, 262.5
	122.35, 262.5
	124.35, 262.5
	125.2, 262.5
DAR :	125.5, 262.5
TWR :	118.1, 236.6
ATIS :	126.4, 344.6

**BANGKOK/Don Mueang Intl (VTBD)  
RNAV RWY21L**

DOSBU3C GORSI3C HHN3C  
KASNI3C KIGOB3C REGOS3C  
RYN3C SABIS3C UKERA3C

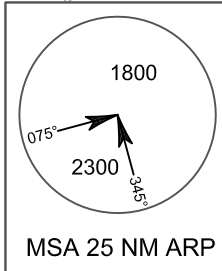
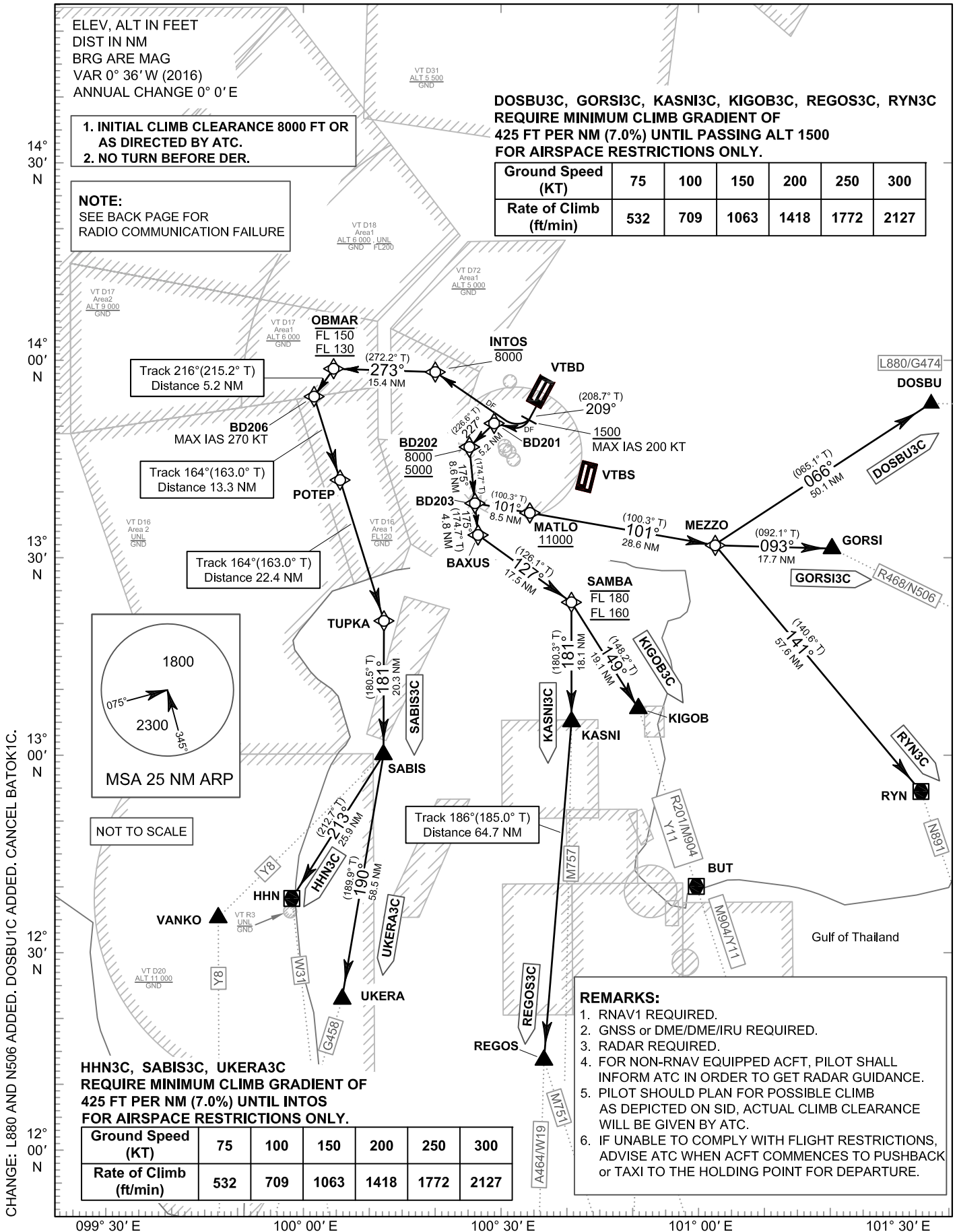
ELEV, ALT IN FEET  
DIST IN NM  
BRG ARE MAG  
VAR 0° 36' W (2016)  
ANNUAL CHANGE 0° 0' E

- INITIAL CLIMB CLEARANCE 8000 FT OR AS DIRECTED BY ATC.
- NO TURN BEFORE DER.

**NOTE:**  
SEE BACK PAGE FOR  
RADIO COMMUNICATION FAILURE

DOSBU3C, GORSI3C, KASNI3C, KIGOB3C, REGOS3C, RYN3C  
REQUIRE MINIMUM CLIMB GRADIENT OF  
425 FT PER NM (7.0%) UNTIL PASSING ALT 1500  
FOR AIRSPACE RESTRICTIONS ONLY.

Ground Speed (KT)	75	100	150	200	250	300
Rate of Climb (ft/min)	532	709	1063	1418	1772	2127



NOT TO SCALE

HHN3C, SABIS3C, UKERA3C  
REQUIRE MINIMUM CLIMB GRADIENT OF  
425 FT PER NM (7.0%) UNTIL INTOS  
FOR AIRSPACE RESTRICTIONS ONLY.

Ground Speed (KT)	75	100	150	200	250	300
Rate of Climb (ft/min)	532	709	1063	1418	1772	2127

- REMARKS:**
- RNAV1 REQUIRED.
  - GNSS or DME/DME/IRU REQUIRED.
  - RADAR REQUIRED.
  - FOR NON-RNAV EQUIPPED ACFT, PILOT SHALL INFORM ATC IN ORDER TO GET RADAR GUIDANCE.
  - PILOT SHOULD PLAN FOR POSSIBLE CLIMB AS DEPICTED ON SID, ACTUAL CLIMB CLEARANCE WILL BE GIVEN BY ATC.
  - IF UNABLE TO COMPLY WITH FLIGHT RESTRICTIONS, ADVISE ATC WHEN ACFT COMMENCES TO PUSHBACK or TAXI TO THE HOLDING POINT FOR DEPARTURE.

CHANGE: L880 AND N506 ADDED. DOSBU1C ADDED. CANCEL BATOMK1C.