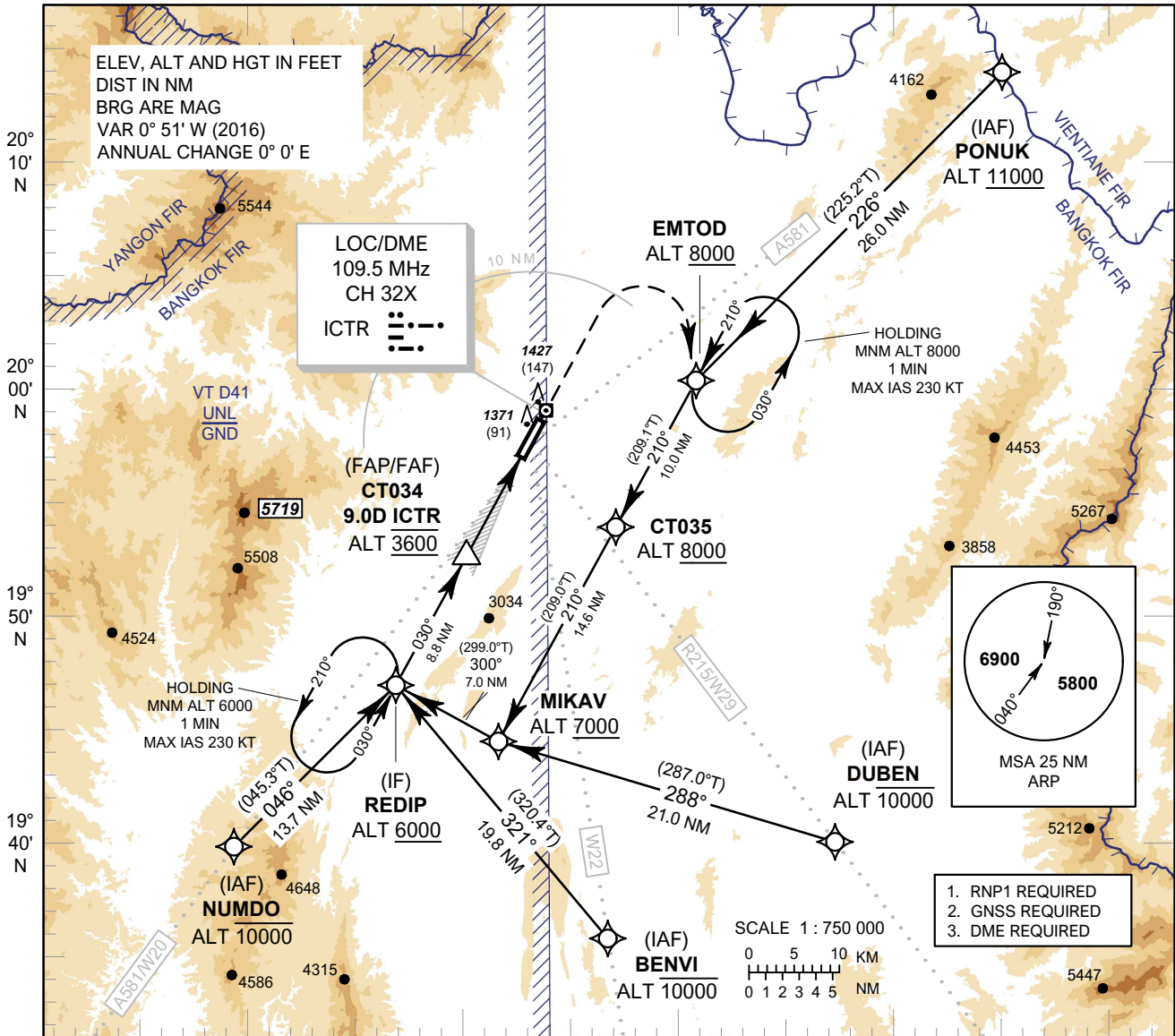


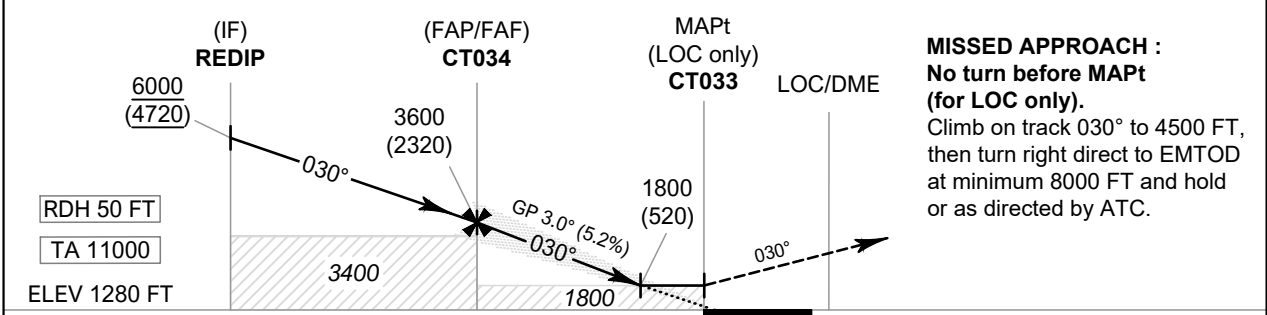
INSTRUMENT APPROACH CHART - ICAO
AERODROME ELEV 1280 FT
 HEIGHTS RELATED TO THR RWY03 - ELEV 1280 FT

APP : 120.05 , 257.8
 TWR : 118.4 , 236.6
 ATIS : 127.85

CHIANG RAI / Mae Fah Luang-Chiang Rai Intl (VTCT)
 ILS or LOC z RWY03



099° 40' E 099° 50' E 100° 00' E 100° 10' E 100° 20' E



MISSED APPROACH :
No turn before MAPt (for LOC only).
 Climb on track 030° to 4500 FT, then turn right direct to EMTOD at minimum 8000 FT and hold or as directed by ATC.

RDH 50 FT
 TA 11000
 ELEV 1280 FT (THR RWY03)
 17.8 9.0 3.3 1.8 0 DME FM LOC/DME
 16.0 7.2 1.5 0 NM FM THR

| OCA/H | | A | B | C | D | GS OUT | Distance (ICTR) | FAF | 8 D | 7 D | 6 D | 5 D | 4 D | 3.3 D |
|----------------------|----------|------------|---|-------------|---|--------|----------------------|-------------------|-------------|-------------|-------------|-------------|-------------|------------|
| Straight-in Approach | CAT I | 1800 (520) | | | | | | Altitude (Height) | 3600 (2320) | 3290 (2010) | 2975 (1695) | 2655 (1375) | 2340 (1060) | 2025 (745) |
| | LOC only | | | | | | Ground Speed | knot | 70 | 90 | 100 | 120 | 140 | 160 |
| Circling (OCH AAL) | | 1900 (620) | | 3070 (1790) | | | Rate of Descent 5.2% | ft/min | 369 | 474 | 527 | 632 | 737 | 843 |

NOTE :
 1. **OCA/H 1480 (200) FT of ILS procedure** can be achieved for all aircraft categories which can commence a missed approach climb gradient of **3.5% (213 FT/NM)** until after turn.
 2. **OCA/H 1680 (400) FT of LOC only procedure** can be achieved for all aircraft categories which can commence a missed approach climb gradient of **3.5% (213 FT/NM)** until after turn.

CHANGE: NEW CHART. INTERMEDIATE APPROACH SEGMENT - NO HORIZONTAL DISTANCE 1.5 NM DUE TO TERRAIN RESTRICTIONS.