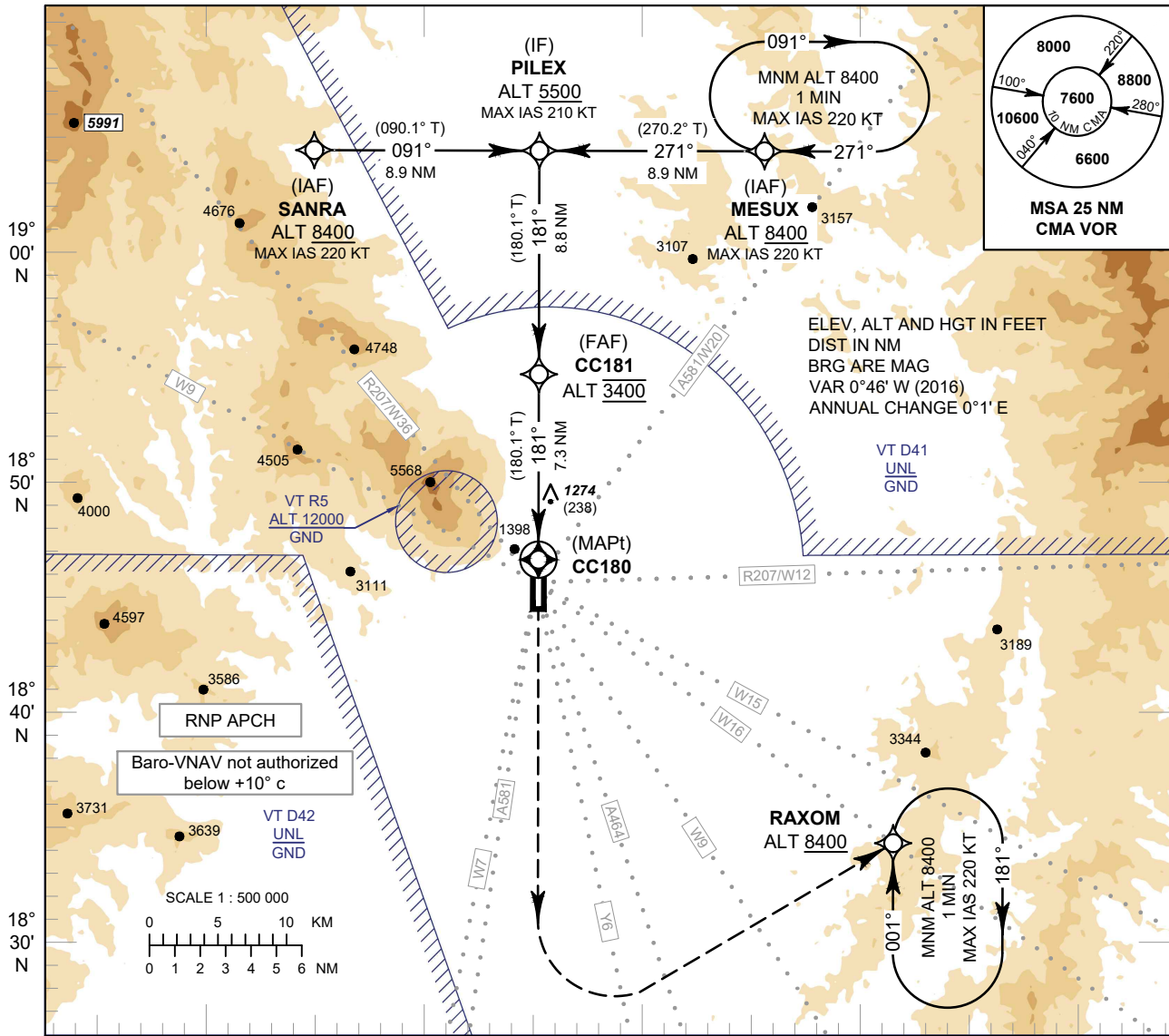


**INSTRUMENT APPROACH CHART - ICAO** **AERODROME ELEV 1036 FT**  
 HEIGHTS RELATED TO THR RWY18 - ELEV 1036 FT

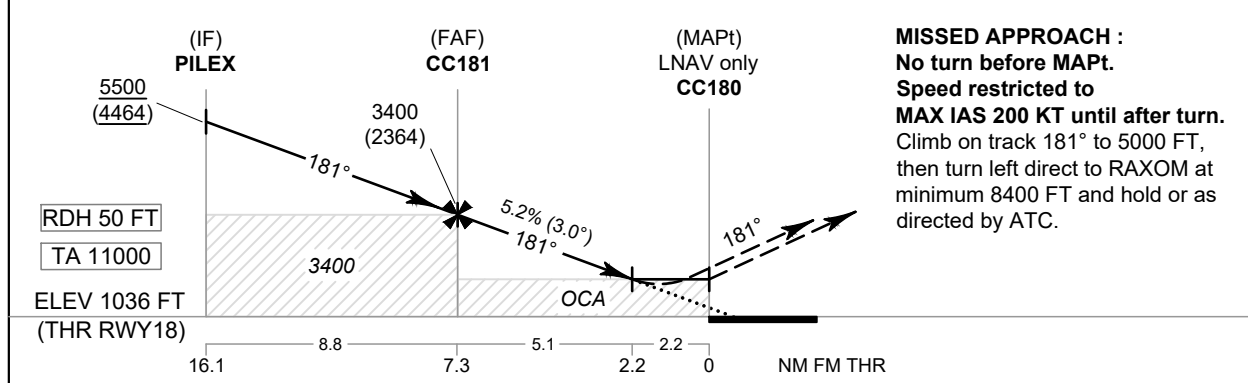
APP : 129.6, 305.4  
 TWR : 118.1, 236.6  
 GND : 121.9, 275.8  
 ATIS : 127.2, 301.5

**CHIANG MAI / Chiang Mai (VTCC)**

**RNP RWY18**



098° 40' E      098° 50' E      099° 00' E      099° 10' E      099° 20' E



**MISSED APPROACH :**  
 No turn before MAPt.  
 Speed restricted to MAX IAS 200 KT until after turn.  
 Climb on track 181° to 5000 FT, then turn left direct to RAXOM at minimum 8400 FT and hold or as directed by ATC.

OCA/H	A	B	C	D	NM to NEXT WPT	FAF	7 NM	6 NM	5 NM	4 NM	3 NM	2.2 NM
LNAV / VNAV	1560 (524)				Altitude (Height)	3400 (2364)	3300 (2264)	2980 (1944)	2665 (1629)	2350 (1314)	2035 (999)	1780 (744)
LNAV	1780 (744)				Ground Speed	knot	70	90	100	120	140	160
Circling (OCH AAL)	2030 (994)		2220 (1184)	2420 (1384)	Rate of Descent 5.2%	ft/min	369	474	527	632	737	843

\* FOR CIRCLING RESTRICTION SEE VERSO

CHANGE: REVISED CHART.