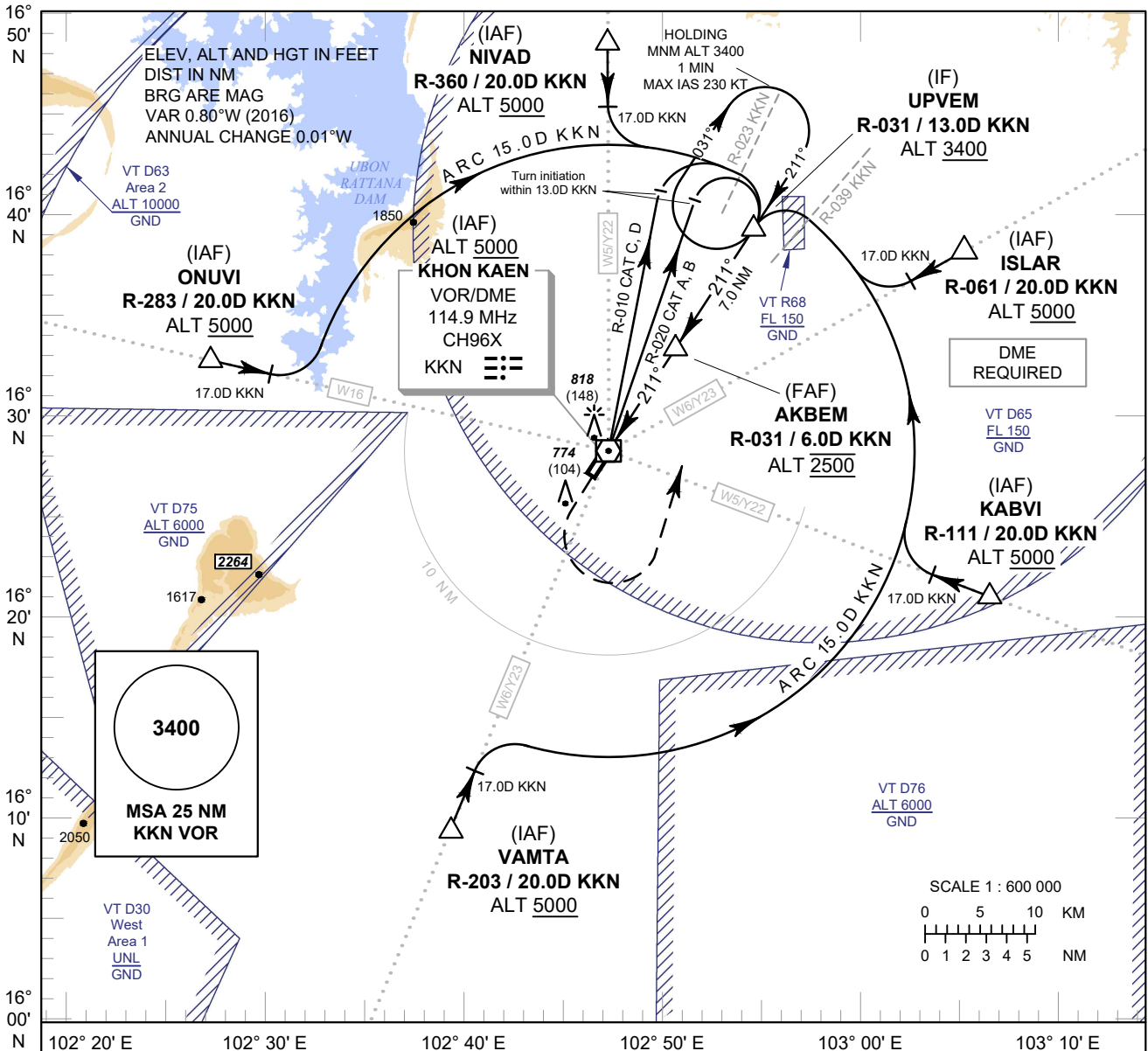


**INSTRUMENT  
APPROACH  
CHART - ICAO**

**AERODROME ELEV 670 FT  
HEIGHTS RELATED TO  
THR RWY21 - ELEV 670 FT**

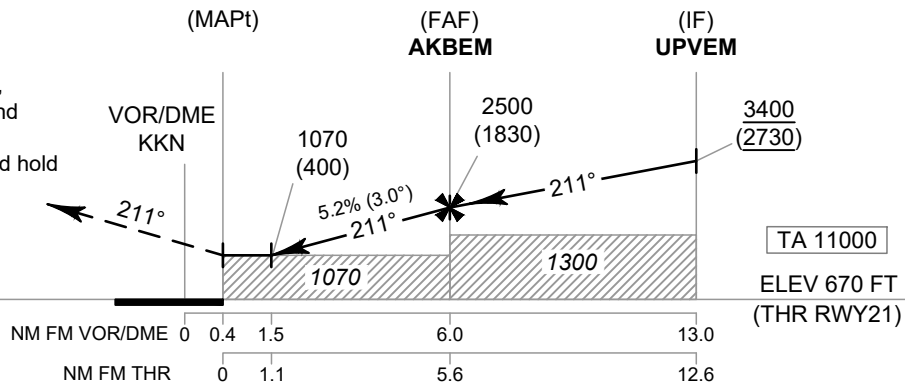
APP : 123.4 , 240.0  
TWR : 122.25 , 236.6  
GND : 121.9  
ATIS : 126.85

**KHON KAEN /  
Khon Kaen (VTUK)  
VOR RWY21**



**MISSED APPROACH :**  
**No turn before MAPt.**

Climb straight ahead to 1500 FT,  
then turn left to intercept outbound  
R-031 KKN VOR and proceed to  
UPVEM at minimum 3400 FT and hold  
or as directed by ATC.



OCA/H	A	B	C	D	Distance (KKN)	1.5 D	2 D	3 D	4 D	5 D	FAF		
Straight-in Approach	1070 (400)				Altitude (Height)	1070 (400)	1225 (555)	1540 (870)	1855 (1185)	2175 (1505)	2500 (1830)		
					Ground Speed	knot	70	90	100	120	140	160	
Circling (OCH AAL)	1500 (830)				Rate of Descent	5.2%	ft/min	369	474	527	632	737	843

CHANGE: ROUTE Y22, Y23 ADDED.