

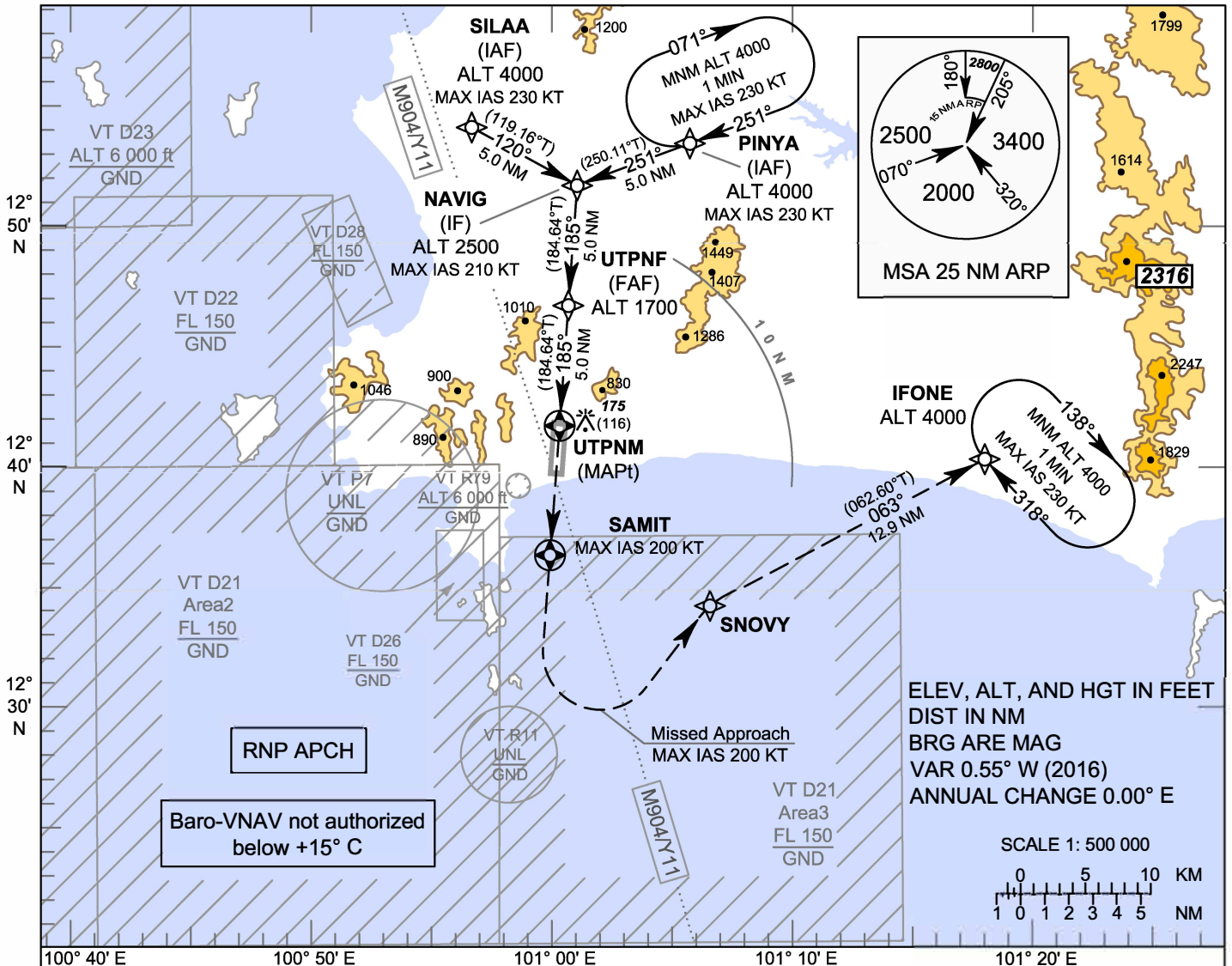
**INSTRUMENT  
APPROACH  
CHART - ICAO**

**AERODROME ELEV 59 FT  
HEIGHTS RELATED TO  
AERODROME ELEV**

APP : 119.7 , 134.5  
: 238.3 , 273.3  
TWR : 118.1 , 118.3  
: 227.0  
GND : 121.9 , 275.8

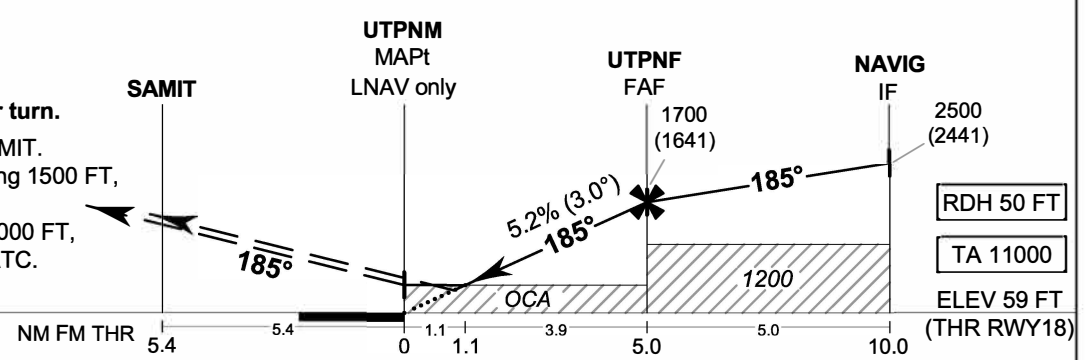
**RAYONG / U-TAPAO RAYONG  
PATTAYA INTL (VTBU)**

**RNP RWY18**



**CAUTION: Aircraft shall avoid entering VT R11**

**MISSED APPROACH:**  
No turn before MAPt.  
Speed restricted to  
**MAX IAS 200 KT** until after turn.  
Climb on course 185° to SAMIT.  
After SAMIT and ALT passing 1500 FT,  
turn left direct to SNOVY,  
then proceed to IFONE at 4000 FT,  
and hold or as directed by ATC.



OCA/H	A	B	C	D	NM to NEXT WPT	1.1 NM	2 NM	3 NM	4 NM	FAF		
LNAV / VNAV	400 (341)				Altitude (Height)	460 (401)	740 (681)	1055 (996)	1375 (1316)	1700 (1641)		
LNAV	460 (401)				Ground speed	knot	70	90	100	120	140	160
Circling (OCH AAL)	1200 (1141)	1450 (1391)			Rate of descent FAF-MAPt 5.2%	(ft/min)	369	474	527	632	737	843

CHANGE: CHART TITLE.