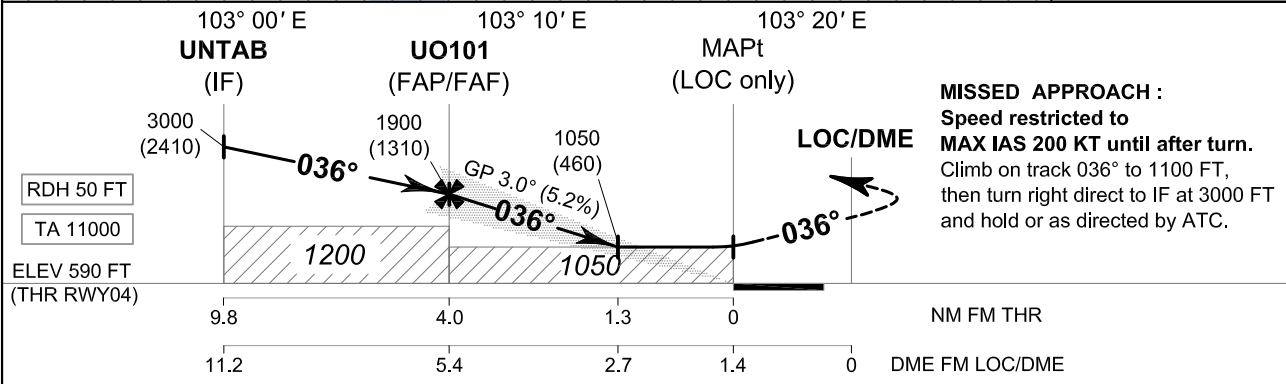
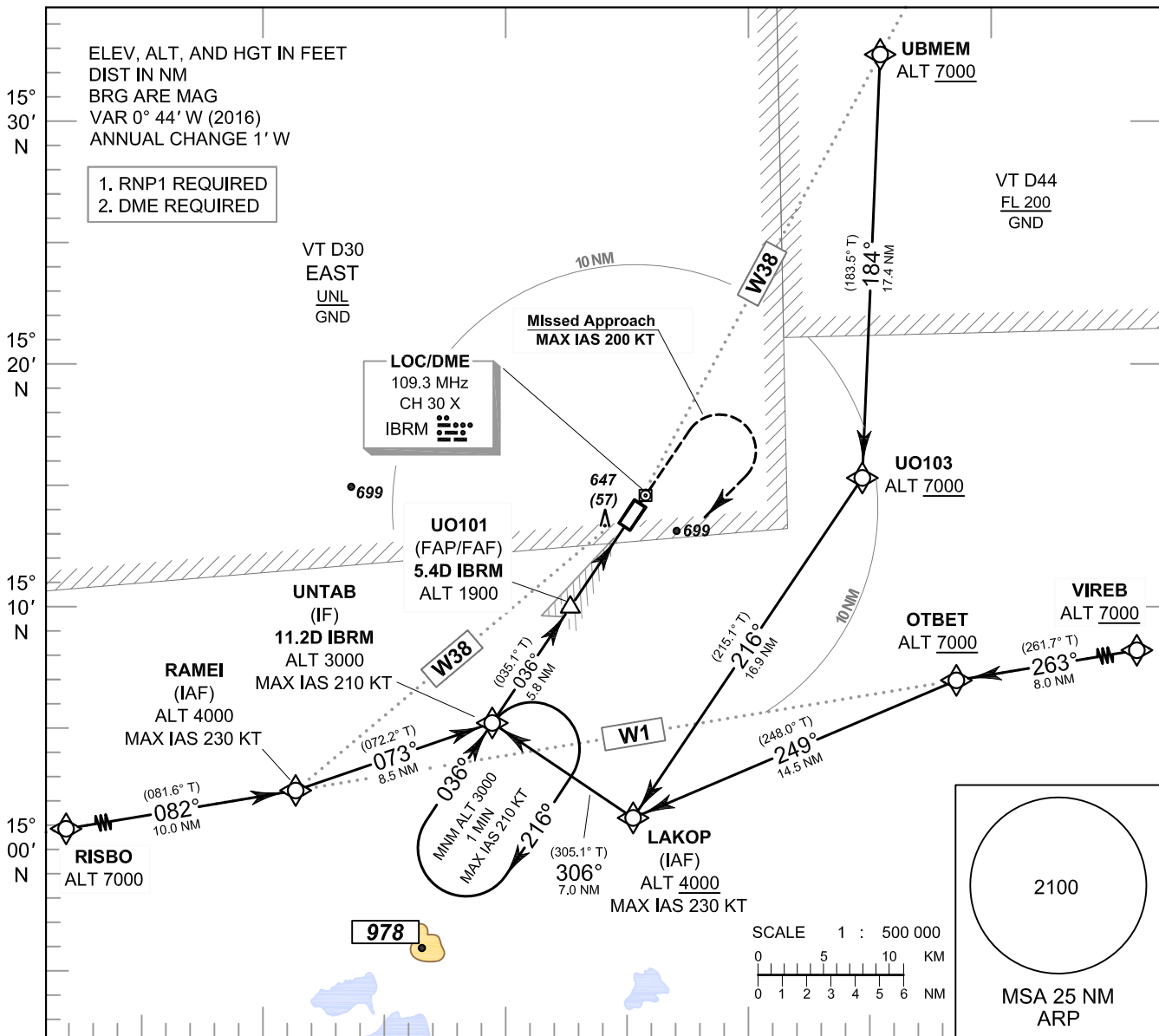


**INSTRUMENT APPROACH CHART - ICAO** **AERODROME ELEV 590 FT**  
**HEIGHTS RELATED TO THR RWY04 - ELEV 590 FT**

APP : 125.55  
 TWR : 118.05, 236.6  
 ATIS : 127.05

**BURI RAM / Buri ram (VTUO)**

**ILS or LOC z RWY04**



OCA/H	A	B	C	D	L/D	Distance (IBRM)						
						FAF	5D	4D	3D	2.7D		
Straight-in approach	CAT I	820 (230)	840 (250)			1900 (1310)	1775 (1185)	1460 (870)	1145 (555)	1050 (460)		
LOC only	1050 (460)				Ground speed	knot	70	90	100	120	140	160
Circling (OCH AAL)	1100 (510)	1300 (710)		Rate of descent	ft/min	369	474	527	632	737	843	

CHANGE : ATIS FREQUENCY