

STANDARD ARRIVAL CHART - INSTRUMENT (STAR) - ICAO

TRANSITION ALTITUDE
11000

APP : 120.05
TWR : 122.5, 236.6
GND : 121.9
ATIS : 132.4

KRABI/Krabi (VTSG)
RNAV RWY32

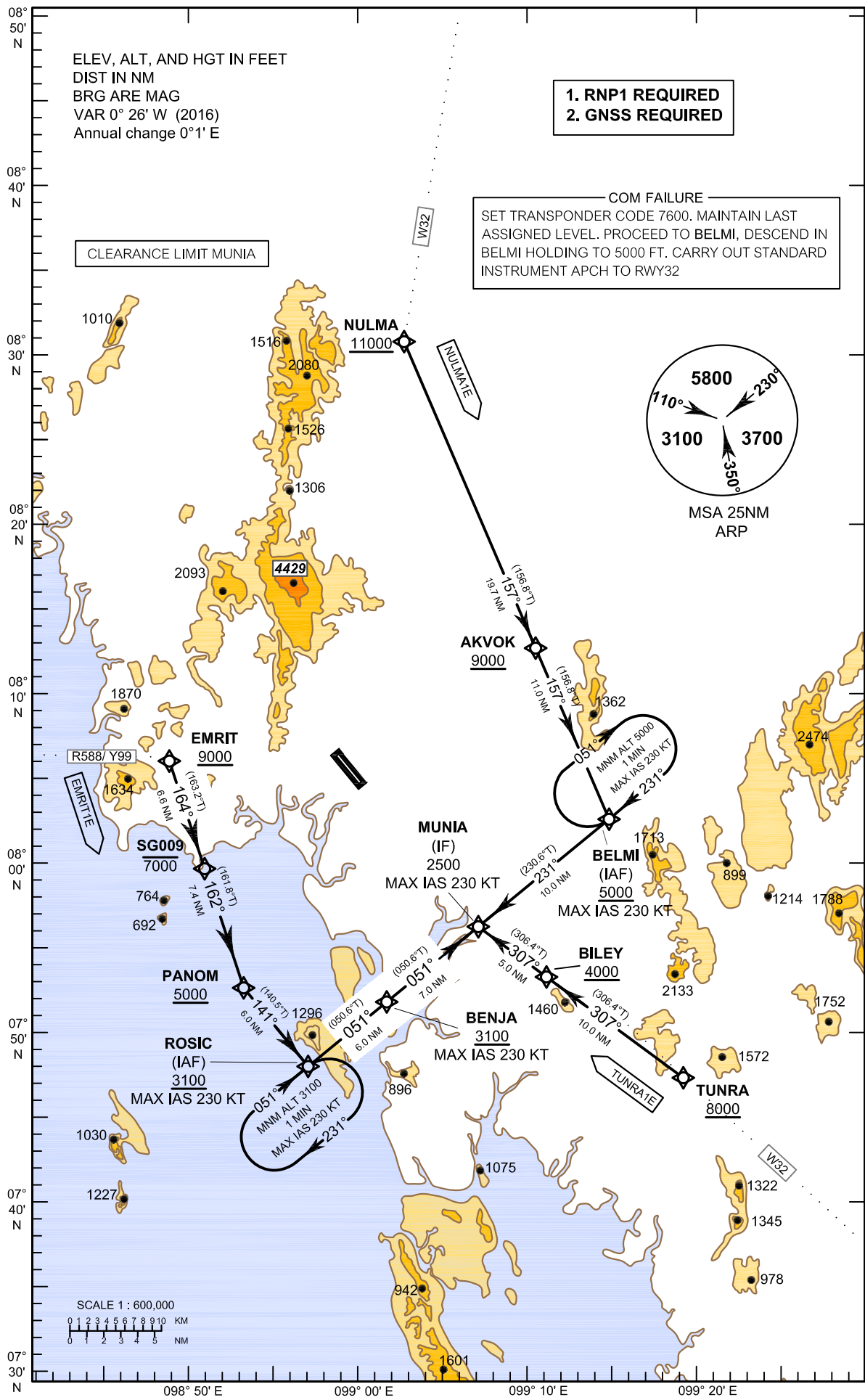
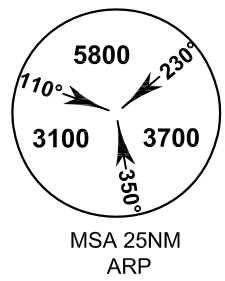
EMRIT1E NULMA1E TUNRA1E

ELEV, ALT, AND HGT IN FEET
DIST IN NM
BRG ARE MAG
VAR 0° 26' W (2016)
Annual change 0° 1' E

1. RNP1 REQUIRED
2. GNSS REQUIRED

COM FAILURE
SET TRANSPONDER CODE 7600. MAINTAIN LAST ASSIGNED LEVEL. PROCEED TO BELMI, DESCEND IN BELMI HOLDING TO 5000 FT. CARRY OUT STANDARD INSTRUMENT APCH TO RWY32

CLEARANCE LIMIT MUNIA



CHANGE: TWR FREQUENCY, GND FREQUENCY, ATIS FREQUENCY.