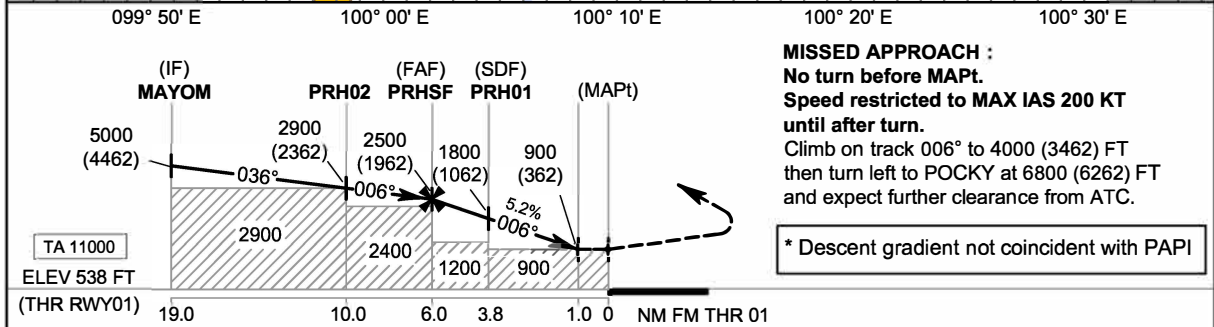
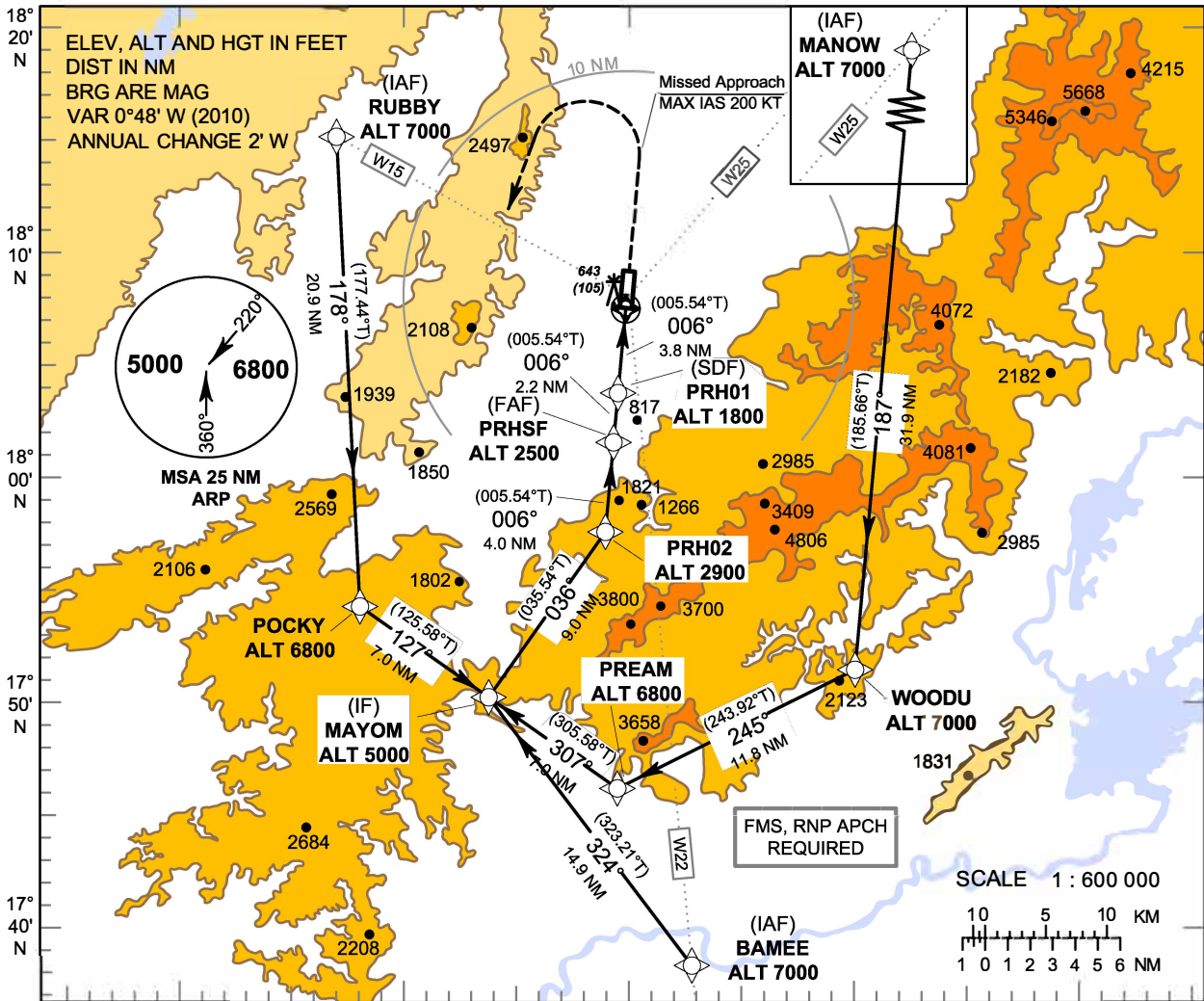


**INSTRUMENT  
APPROACH  
CHART - ICAO**

**AERODROME ELEV 538 FT  
HEIGHTS RELATED TO  
AERODROME ELEV**

APP : 120.1  
TWR : 118.6

**PHRAE/Phrae (VTCP)  
RNP RWY 01**



**MISSED APPROACH :**  
No turn before MAPt.  
Speed restricted to MAX IAS 200 KT until after turn.  
Climb on track 006° to 4000 (3462) FT then turn left to POCKY at 6800 (6262) FT and expect further clearance from ATC.  
\* Descent gradient not coincident with PAPI

CHANGE: CHART TITLE:

OCA/H	A	B	C	NM to THR 01	FAF	5 NM	4 NM	3 NM	2 NM	1 NM		
LNAV	900 (362)			Altitude (Height)	2500 (1962)	2170 (1632)	1850 (1312)	1535 (997)	1220 (682)	900 (362)		
				Ground speed (GS)	knot		100	120	140	160	180	200
Circling (OCH AAL)	1200 (662)			Rate of descent	(ft/min)		530	630	740	845	950	1055