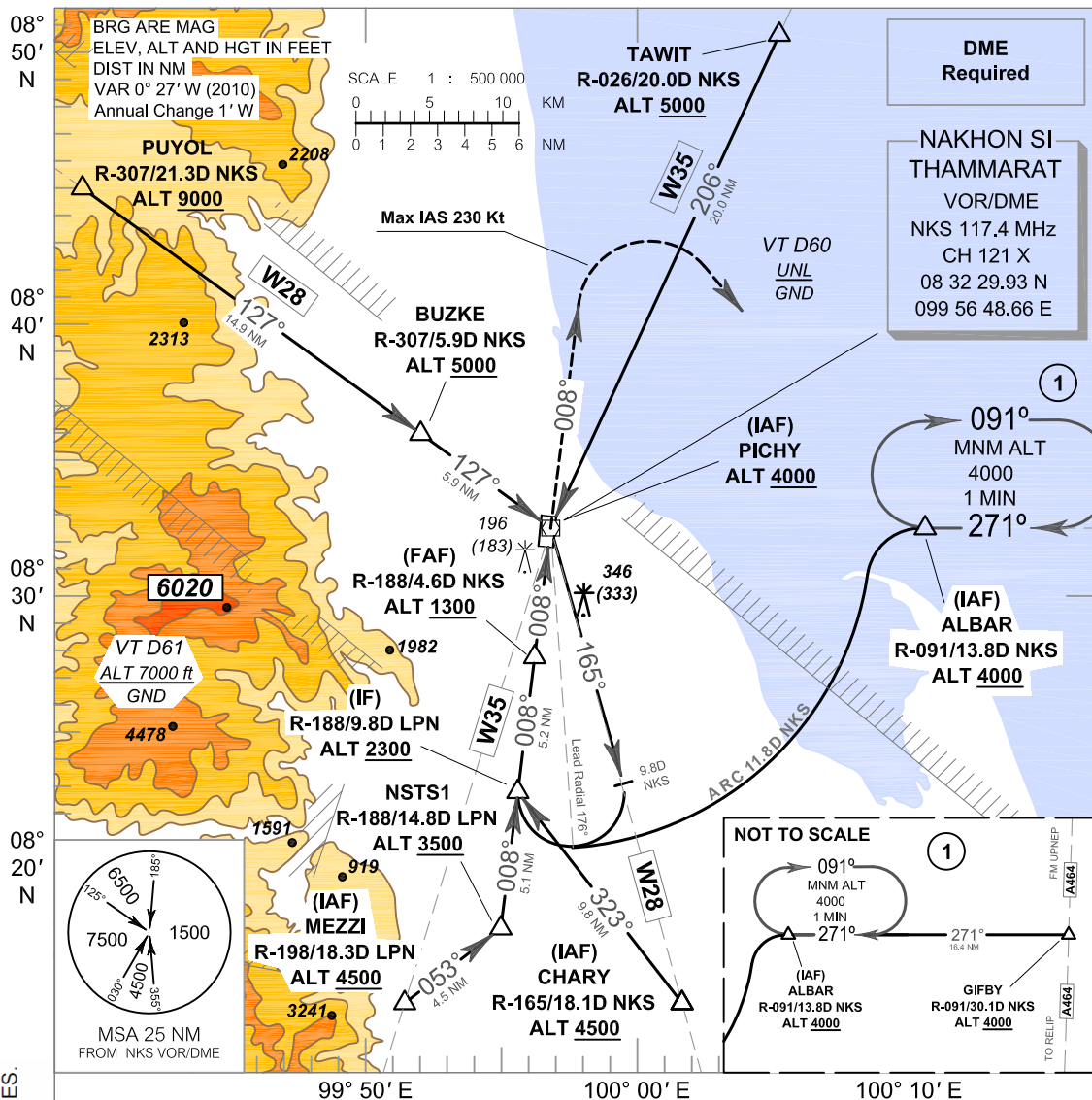


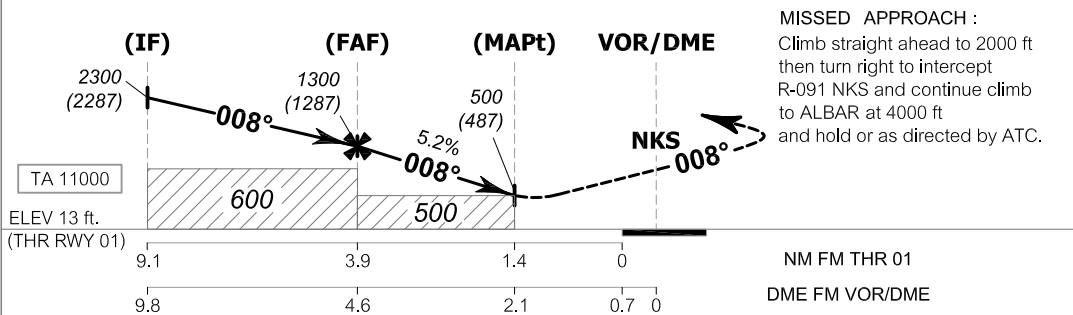
INSTRUMENT APPROACH CHART - ICAO
AERODROME ELEV. 13 ft
HEIGHTS RELATED TO AERODROME ELEV.

APP : 119.75
 TWR : 122.55, 236.6
 GND : 121.9
 ATIS : 123.4

NAKHON SI THAMMARAT / Nakhon Si Thammarat (VTSF)
VOR RWY 01



CHANGE : APP FREQUENCIES. ADDED GND FREQUENCIES. ADDED ATIS FREQUENCIES.



MISSED APPROACH :
 Climb straight ahead to 2000 ft then turn right to intercept R-091 NKS and continue climb to ALBAR at 4000 ft and hold or as directed by ATC.

| OCA/H | A | B | C | D | Distance (NKS) | NM FM THR 01 | | | | | |
|------------------------|-------------------|---|------|---|--------------------------|----------------|-------------|-----------|-----------|-----|------|
| | | | | | | DME FM VOR/DME | | | | | |
| Straight - in approach | 500 (487) | | | | Altitude (Height) | 1300 (1287) | 1105 (1092) | 790 (777) | 500 (487) | | |
| | Ground speed (GS) | | knot | | | 100 | 120 | 140 | 160 | 180 | 200 |
| Circling (OCH AAL) | 740 (727) | | | | Rate of descent (ft/min) | 530 | 630 | 740 | 845 | 950 | 1055 |