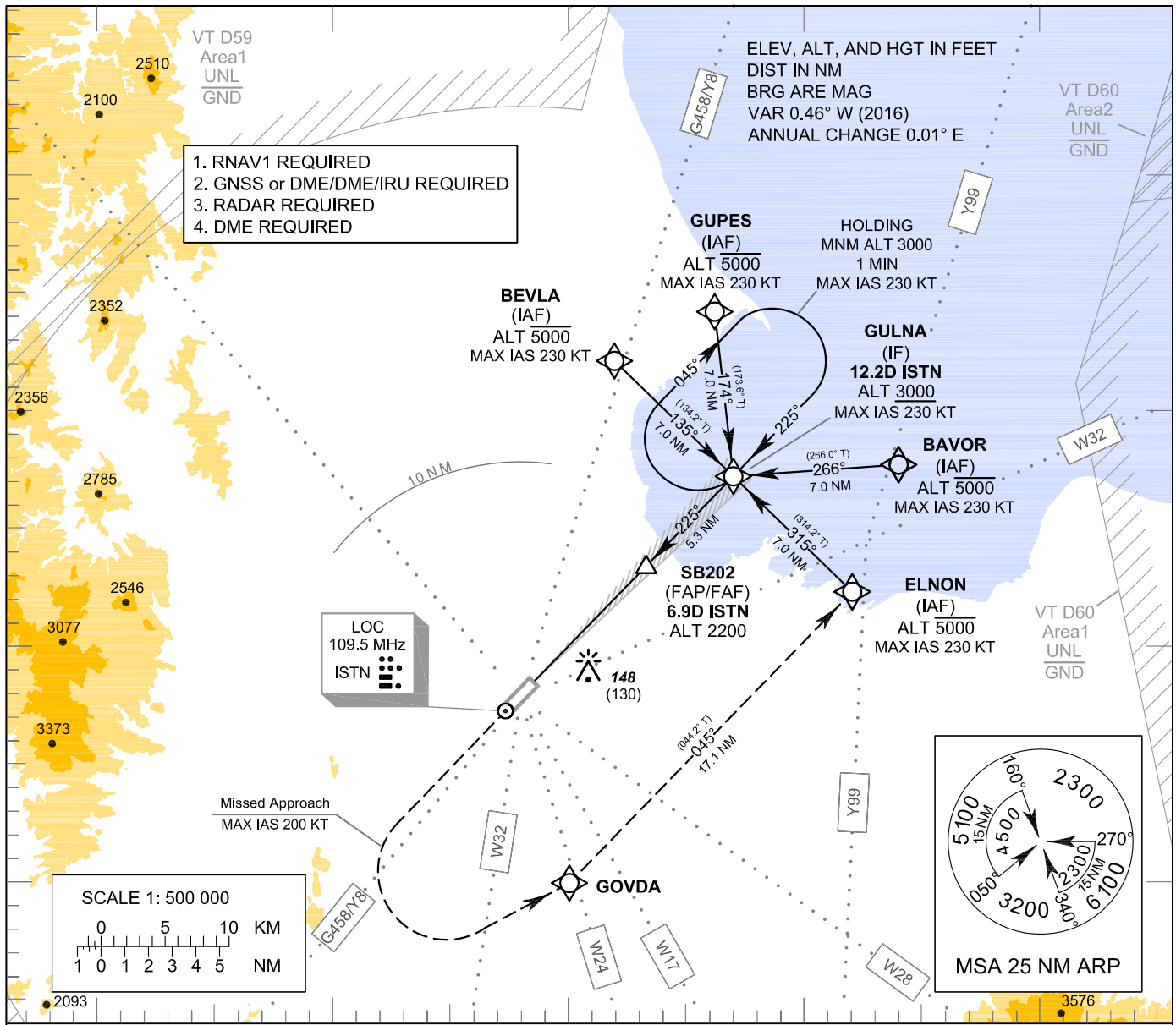


**INSTRUMENT
APPROACH
CHART - ICAO**

AERODROME ELEV 20 FT
HEIGHTS RELATED TO
THR RWY22 - ELEV 18 FT

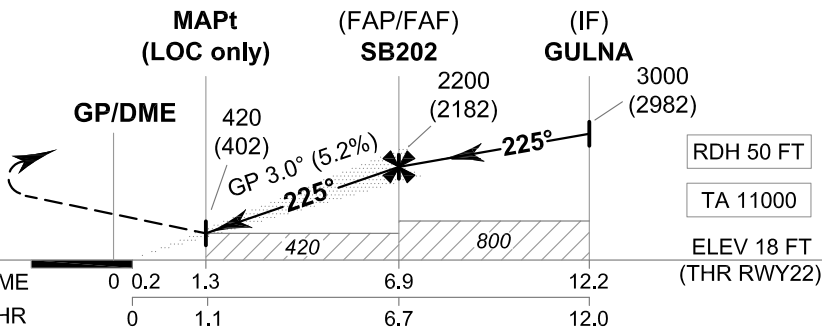
APP : 123.35 , 240.0
TWR : 122.7 , 274.5
GND : 121.9 , 275.8
ATIS : 125.95

SURAT THANI / Surat Thani (VTSB)
ILS or LOC z RWY22



MISSED APPROACH:

No turn before MAPt (for LOC only).
Speed restricted to MAX IAS 200 KT until after turn.
Climb on track 225° to 1200 FT,
then turn left direct to GOVDA. Continue
to ELNONG then GULNA at 3000 FT
and hold or as directed by ATC.



OCA/H		A	B	C	D	GS OUT	Distance (ISTN)	1.3 D	2 D	3 D	4 D	5 D	6 D	FAF
Straight - in Approach	CAT I	280 (262)					Altitude (Height)	420 (402)	635 (617)	950 (932)	1270 (1252)	1585 (1567)	1900 (1882)	2200 (2182)
		420 (402)				Ground speed		knot	70	90	100	120	140	160
LOC only		860 (840)				Rate of descent (5.2%)	ft/min	369	474	527	632	737	843	
Circling (OCH AAL)														

CHANGE: NEW CHART.