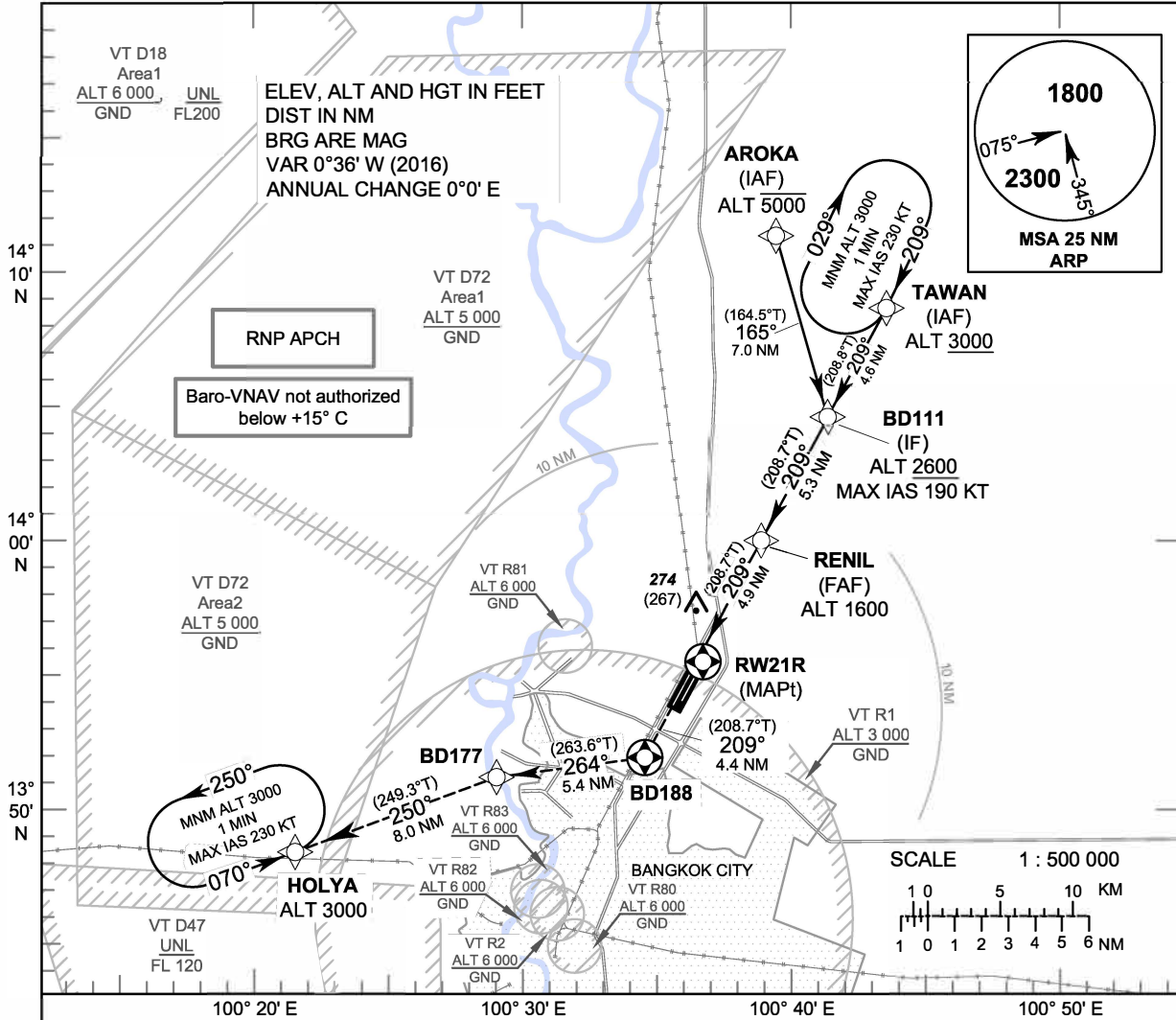


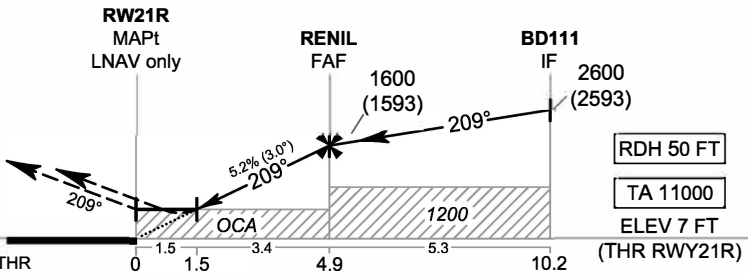
**INSTRUMENT APPROACH CHART - ICAO** **AERODROME ELEV 9 FT**  
**HEIGHTS RELATED TO THR RWY21R - ELEV 7 FT**

APP	: 119.1, 262.5
	: 119.4, 262.5
	: 120.3, 262.5
	: 128.95, 262.5
	: 122.35, 262.5
	: 124.35, 262.5
	: 125.2, 262.5
DAR	: 133.0, 262.5
TWR	: 118.1, 236.6
ATIS	: 126.4, 344.6

**BANGKOK / Don Mueang Intl (VTBD)**  
**RNP RWY21R**



**MISSED APPROACH :**  
**No turn before MAPt.**  
 Climb on track 209° to BD188,  
 then turn right to BD177,  
 then proceed to HOLYA at 3000 FT,  
 and hold or as directed by ATC.



CHANGE: CIRCLING ALT.

OCA/H	A	B	C	D	NM to NEXT WPT	1.5 NM	2 NM	3 NM	4 NM	FAF		
LNAV/VNAV	370 (363)				Altitude (Height)	530 (523)	690 (683)	1005 (998)	1320 (1313)	1600 (1593)		
LNAV	530 (523)				Ground speed	knot	70	90	100	120	140	160
Circling (OCH AAL)	800 (791)			1100 (1091)	Rate of descent FAF-MAPT (5.2%)	ft/min	369	474	527	632	737	843