

**STANDARD DEPARTURE CHART -
INSTRUMENT (SID) - ICAO**

APP : 123.6
TWR : 119.8, 236.6
ATIS : 126.6

**NAKHON RATCHASIMA/
Nakhon Ratchasima (VTUQ)
RNAV RWY24**

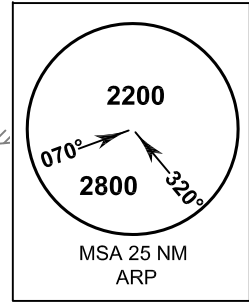
**BLUVY1B SAMBY1B
SITTA1B VOBOT1B**

ELEV, ALT, AND HGT IN FEET
DIST IN NM
BRG ARE MAG
VAR 0° 49' W (2015)
Annual Change 2' W

COM FAILURE
- SET TRANSPONDER CODE 7600.
- COMPLY WITH LAST ASSIGNED LEVEL UNTIL NEXT REPORTING POINT THEN CLIMB TO FLIGHT PLAN CRUISING LEVEL.

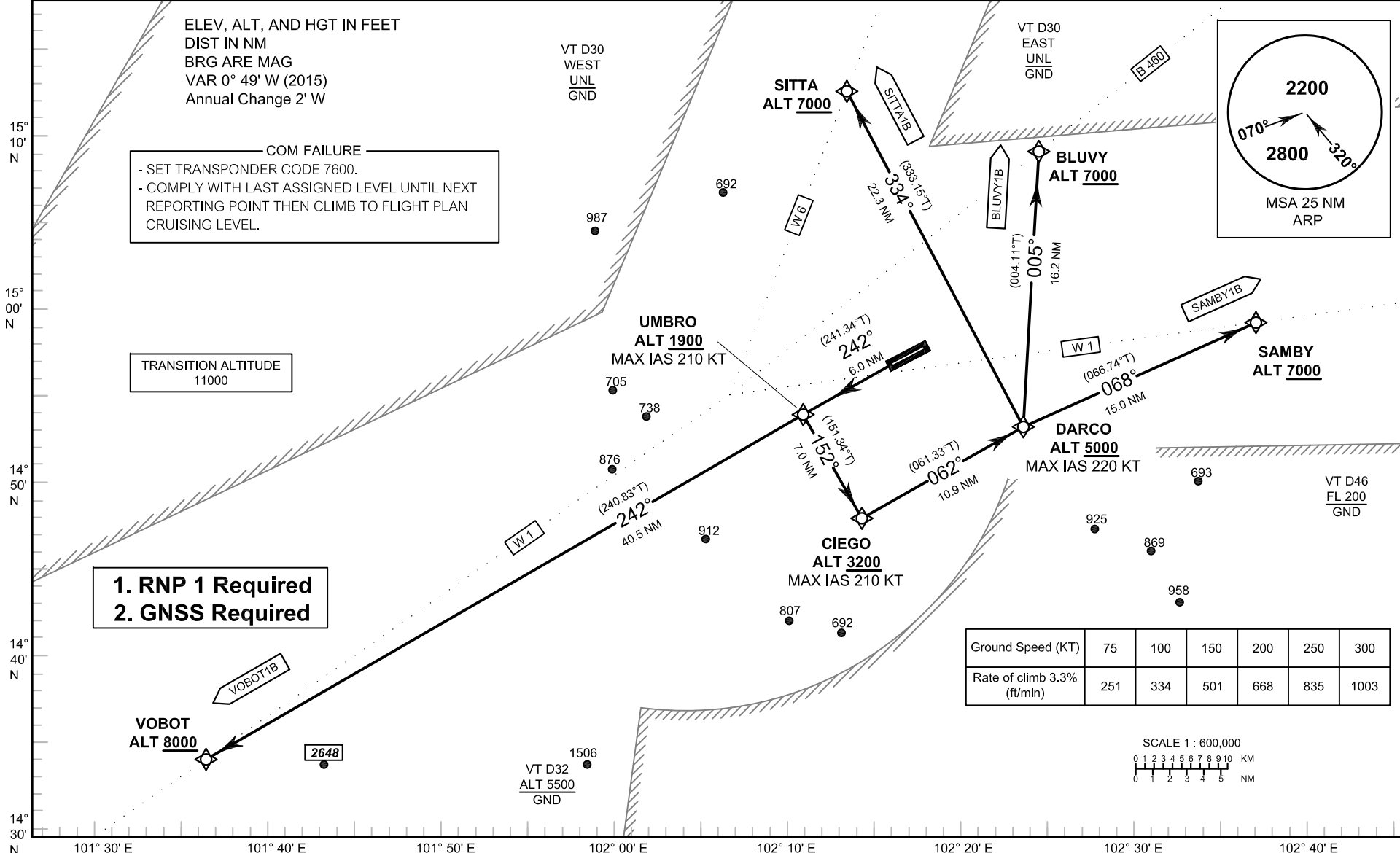
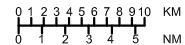
TRANSITION ALTITUDE
11000

**1. RNP 1 Required
2. GNSS Required**



Ground Speed (KT)	75	100	150	200	250	300
Rate of climb 3.3% (ft/min)	251	334	501	668	835	1003

SCALE 1 : 600,000



CHANGE: ATIS FREQUENCY ADDED.