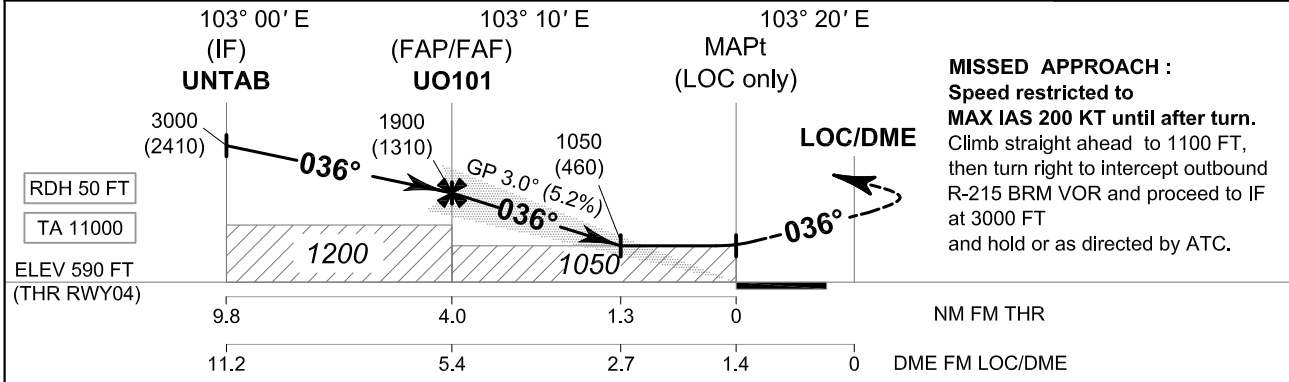
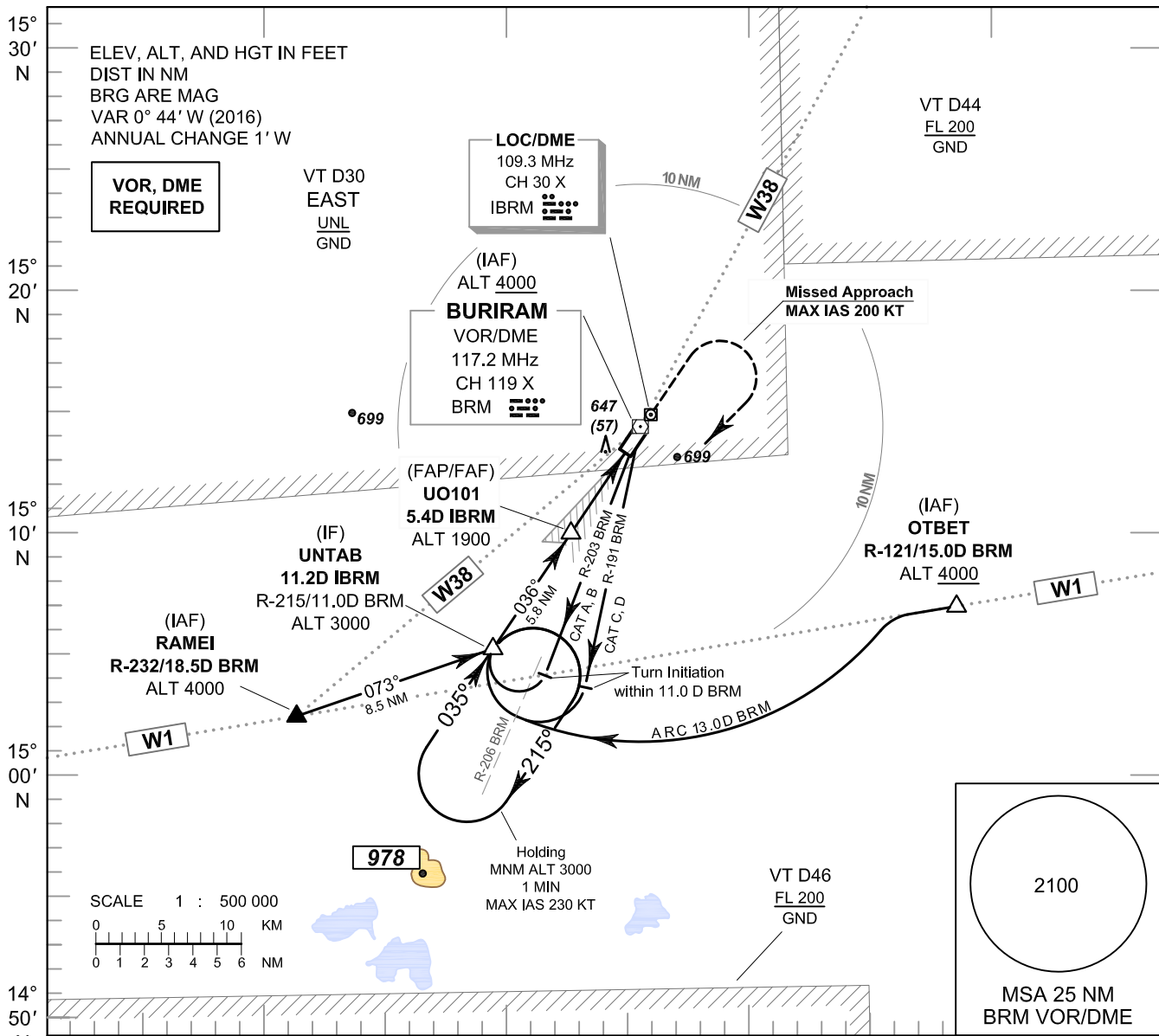


INSTRUMENT AERODROME ELEV 590 FT
APPROACH HEIGHTS RELATED TO
CHART - ICAO THR RWY04 - ELEV 590 FT

APP : 125.55
 TWR : 118.05, 236.6
 ATIS : 127.05

BURI RAM / Buri ram (VTUO)
ILS or LOC y RWY04



CHANGE : ATIS FREQUENCY.

| OCA/H | | A | B | C | D | GS OUT | Distance (IBRM) | FAF | 5D | 4D | 3D | 2.7D | |
|------------------------|-------|------------|---|------------|---|-----------------|-------------------|-------------|-------------|------------|------------|------------|-----|
| Straight - in approach | CAT I | 820 (230) | | 840 (250) | | | Altitude (Height) | 1900 (1310) | 1775 (1185) | 1460 (870) | 1145 (555) | 1050 (460) | |
| LOC only | | 1050 (460) | | | | Ground speed | knot | 70 | 90 | 100 | 120 | 140 | 160 |
| Circling (OCH AAL) | | 1100 (510) | | 1300 (710) | | Rate of descent | ft/min | 369 | 474 | 527 | 632 | 737 | 843 |