

STANDARD DEPARTURE CHART - INSTRUMENT (SID) - ICAO

TRANSITION ALTITUDE
11000 FT

SPEED RESTRICTION
MAX IAS 250 KT AT OR BELOW ALT 10000 FT UNLESS OTHERWISE AUTHORIZED BY ATC.

APP : 119.1, 262.5
: 120.3, 262.5
: 128.95, 262.5
: 122.35, 262.5
: 124.35, 262.5
: 125.2, 262.5

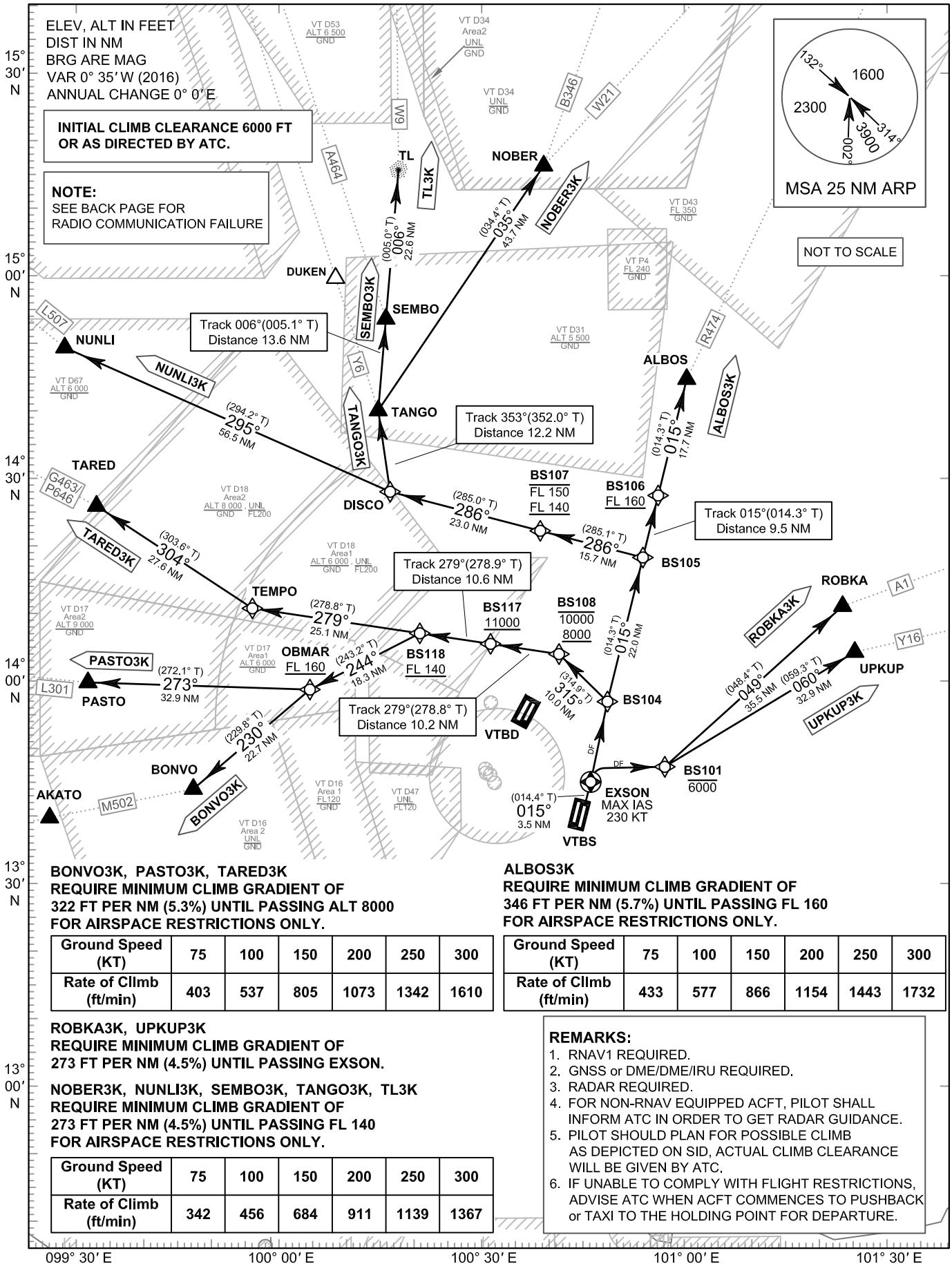
ARR : 121.1
: 126.3

TWR : 118.2, 274.5
: 119.0

DEP ATIS : 127.65

**BANGKOK/Suvarnabhumi Intl (VTBS)
RNAV RWY01R**

ALBOS3K BONVO3K
NOBER3K NUNLI3K PASTO3K
ROBKA3K SEMBO3K TANGO3K
TARED3K TL3K UPKUP3K



BONVO3K, PASTO3K, TARED3K
REQUIRE MINIMUM CLIMB GRADIENT OF
322 FT PER NM (5.3%) UNTIL PASSING ALT 8000
FOR AIRSPACE RESTRICTIONS ONLY.

Ground Speed (KT)	75	100	150	200	250	300
Rate of Climb (ft/min)	403	537	805	1073	1342	1610

ALBOS3K
REQUIRE MINIMUM CLIMB GRADIENT OF
346 FT PER NM (5.7%) UNTIL PASSING FL 160
FOR AIRSPACE RESTRICTIONS ONLY.

Ground Speed (KT)	75	100	150	200	250	300
Rate of Climb (ft/min)	433	577	866	1154	1443	1732

ROBKA3K, UPKUP3K
REQUIRE MINIMUM CLIMB GRADIENT OF
273 FT PER NM (4.5%) UNTIL PASSING EXSON.

NOBER3K, NUNLI3K, SEMBO3K, TANGO3K, TL3K
REQUIRE MINIMUM CLIMB GRADIENT OF
273 FT PER NM (4.5%) UNTIL PASSING FL 140
FOR AIRSPACE RESTRICTIONS ONLY.

Ground Speed (KT)	75	100	150	200	250	300
Rate of Climb (ft/min)	342	456	684	911	1139	1367

REMARKS:

- RNAV1 REQUIRED.
- GNSS or DME/DME/IRU REQUIRED.
- RADAR REQUIRED.
- FOR NON-RNAV EQUIPPED ACFT, PILOT SHALL INFORM ATC IN ORDER TO GET RADAR GUIDANCE.
- PILOT SHOULD PLAN FOR POSSIBLE CLIMB AS DEPICTED ON SID, ACTUAL CLIMB CLEARANCE WILL BE GIVEN BY ATC.
- IF UNABLE TO COMPLY WITH FLIGHT RESTRICTIONS, ADVISE ATC WHEN ACFT COMMENCES TO PUSHBACK or TAXI TO THE HOLDING POINT FOR DEPARTURE.

CHANGE: APP FREQ. DEP ATIS ADDED.